

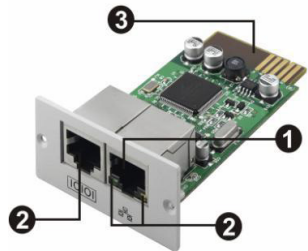


Dual-Lite[®] Trident Environmental Sensor Kit

3.5 to 60kVA

User Manual

1. Overview



- ❶ Ethernet port (10/100Base-T)
- ❷ Sensor port
- ❸ Golden finger: connects to UPS slot
- ❹ Ethernet port status LEDs

Ethernet port status LEDs:

100M LED (Green)	Flash	Port is operating at 100Mbit/s
	Off	Card is not connected to the network
10M LED (Yellow)	Flash	Port is operating at 10Mbit/s
	Off	Card is not connected to the network

2. Installation and Connection

Follow below steps to install and connect the SNMP manager:

Step 1: Remove the cover of intelligent slot on the back panel of UPS and retain the screws

Step 2: Slide the card into the open slot and secure with the screws from step 1. (see chart 2-1)



Chart 2-1

Refer to chart 2-2 for connecting the SNMP manager.

Step 3: Plug Ethernet cable to the Ethernet port (RJ-45) on the SNMP manager.

Step 4: Use one more Ethernet cable. Connect one end to the sensor port on the SNMP manager and the other end to the optional environmental monitoring device.

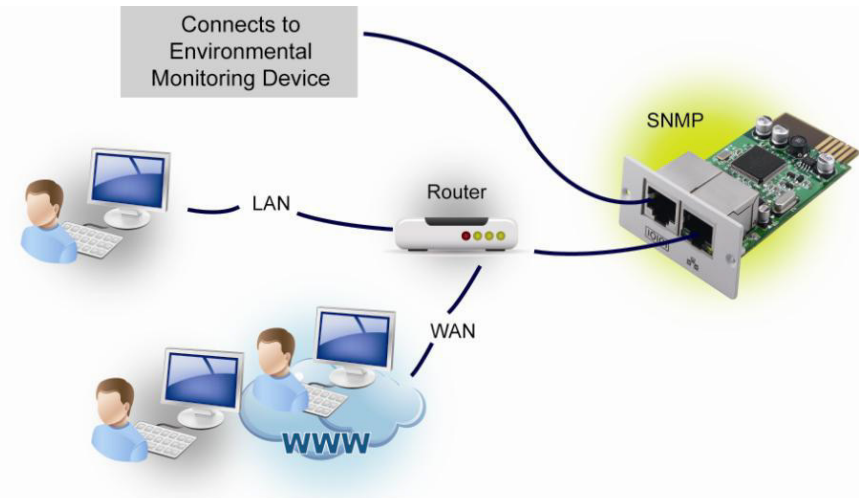


Chart 2-2

3. Configuration

- a) Please install ViewPower Pro monitoring software in your PC. After software is installed successfully, it will pop up a plug icon in the tray. SNMP manager will be automatically activated. Select "SNMP manager" by clicking right button of the mouse.

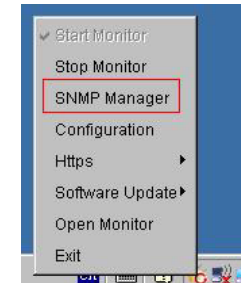


Chart 3-1

- b) Enter specific IP address to search all SNMP devices in LAN. (The SNMP manager will automatically collect the IP address from sever by default via a DHCP server. It will apply default IP address of 192.168.103.230, default subnet mask as 255.255.255.0, and default gateway as 0.0.0.0 without a DHCP server.

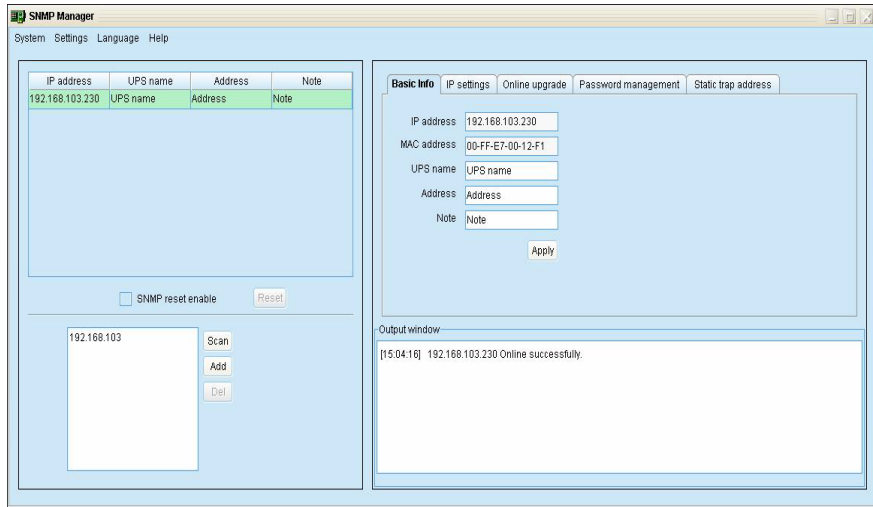


Chart 3-2

- c) User can modify IP setting, online upgrade, password management, and static trap address setting in SNMP Manager interface. It is necessary to enter password for any medications. The default password is 12345678.

Please check SNMP Manager User Manual for detailed configuration.

4. Monitoring

As chart 4-1, select "Open Monitor" by clicking right button of the mouse.



Chart 4-1

Then, it will open the monitor view. Refer to Chart 4-2.

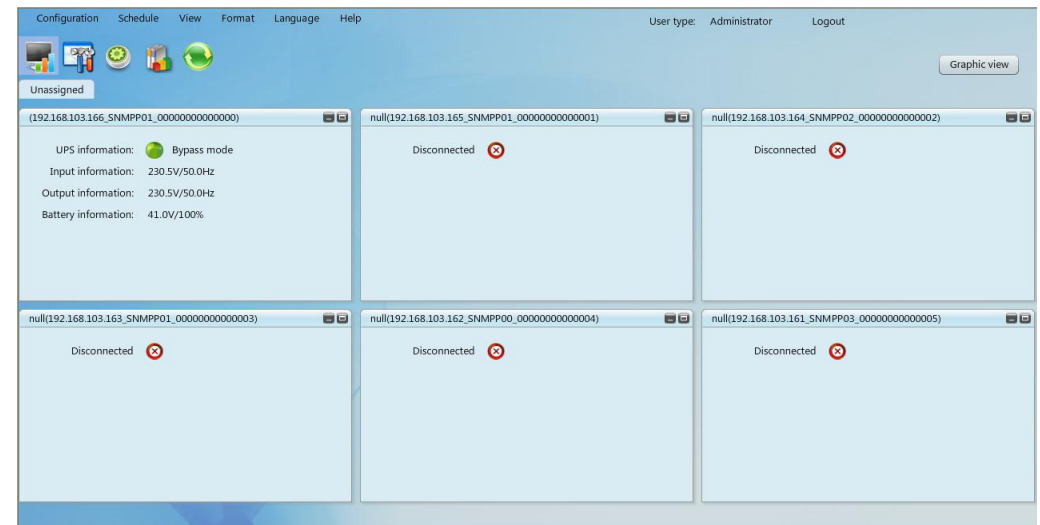
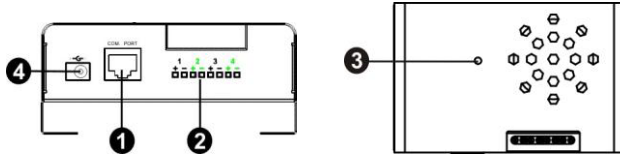


Chart 4-2

Please check ViewPower Pro software for detailed operation.

1. Product Outlook



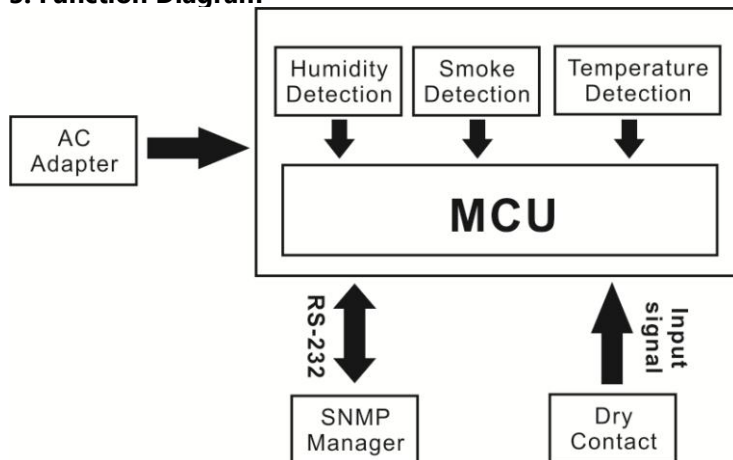
- 4 Adapter connector
- 1 Communication port
- 2 Input dry contact terminal
- 3 Device status indicator

2. Product Introduction

This environmental monitoring device (EMD) is a connectivity device to remote monitor temperature, humidity, and smoke via SNMP manager. It also allows to receive contact closure signals, enabling to communicate with up to 4 compatible devices such as security system and alarm system.

- Plug & use for simple installation with SNMP manager
- Monitor temperature and humidity to protect your precious equipment
- Allow 4 contact closure signals for user-defined usage
- Management software to remote monitor temperature and humidity status via web browser
- Measure temperatures between 0 to 100°C with an accuracy of $\pm 1.5^\circ\text{C}$
- Measure relative humidity between 10 to 90% RH with an accuracy of $\pm 3\%$

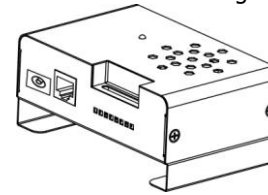
3. Function Diagram



4. Installation

Inspection

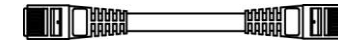
Before installation, please inspect the unit. Be sure that nothing inside the package is damaged. You will find following items inside of package:



Environmental monitoring device

Cable spec: UL2835 24AWG*4PAIRS+AEB

Plug Type: 8P8C 3U*2PCS



3m-length of network cable



Power adapter

* Network cable is replaceable with the standard Cat. 5 cable (max. length 15m).

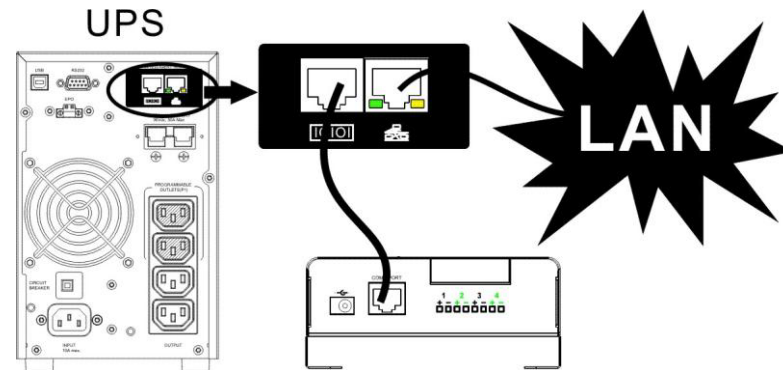
Pre-installation

Before making connection to environmental monitor device, make sure the UPS is already installed with SNMP manager. Please check SNMP manager for SNMP card installation.

SNMP Connection

Connect supplied network cable from communication port of environmental monitor device to RS-232 port of SNMP manager. Use another network cable to connect from RS-485 port of SNMP manager to LAN.

NOTE: If supplied network cable is not long enough for your application, you may substitute another longer cable (not exceed 15m)



Operation

After making connection, green LED will light up and the unit starts to operate.

5. Monitoring Software Operation

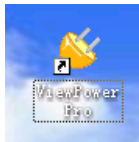
Software Installation

After unit is connected well, please follow below steps to install monitoring software from the internet.

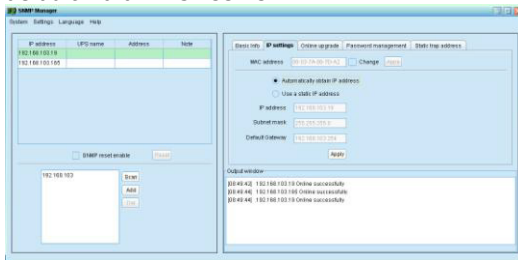
1. Go to the website <http://www.power-software-download.com>
2. Click ViewPower Pro software icon and then choose your required OS to download the software.
3. Follow the on-screen instructions to install the software.
4. When your computer restarts, the monitoring software will appear as an orange plug icon located in the system tray, near the clock.

Operation

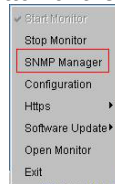
Step 1: Double click "ViewPower Pro" icon to launch the software.



Step 3: Enter specific IP address to search all SNMP devices in LAN. The SNMP manager will automatically collect the IP address from sever by default via a DHCP server.



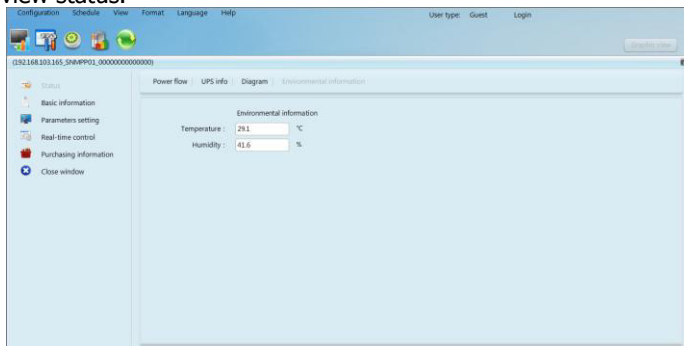
Step 2: SNMP manager will be automatically activated. Select "SNMP manager" by clicking right button of the mouse.



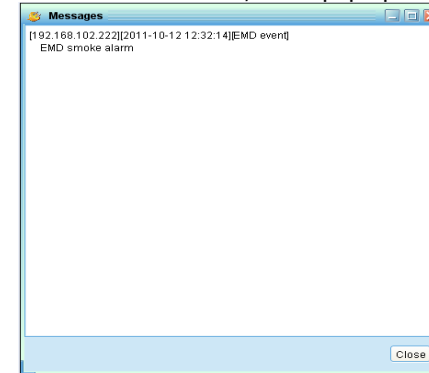
Step 4: After SNMP manager is successfully detected by SNMP manager, select "Open Monitor" by clicking right button of the mouse.



Step 5: When launching ViewPower Pro software, click "Environmental information" icon to view status.



If it's detected smoke, it will pop up a message as below:



6. Trouble Shoot ing

Problem	Possible Cause	Solutions
It displays 0 in the environmental information section of software.	SNMP card is not connected well.	Make sure SNMP card is firmly connected in the UPS.
	Network cable or adapter is not connected well.	Make sure network cable and adapter are connected well.
LED is not lighting or LED is flashing.	Input power is not stable.	Check if adapter is connected firmly to grid. If the problem persists, please contact local dealer.
Temperature or humidity accuracy is out of range.	Temperature or humidity sensor is broken.	Please contact local dealer directly.
Smoke detection is not working.	Smoke sensor is broken.	Please contact local dealer directly.

7. Specification

Model	EMD
Temperature measurement range	0 ~ 100°C
Temperature measurement accuracy	±1.5°C
Humidity measurement range	10% ~ 90% RH
Humidity measurement accuracy	±3%
Smoke alarm	Ionization sensor
Communication	RS232 with ASCII protocol
Acceptable cable length	15 m
Dimension (DxWxH) mm	110 x 71.6 x 48.3
Net weight	209 g