

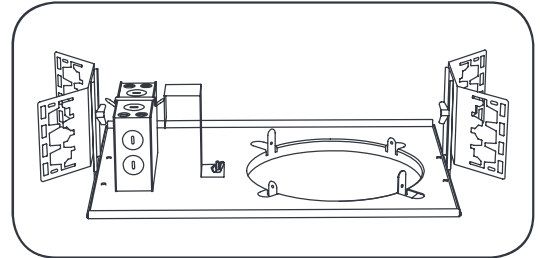
Lumination® LED Luminaire

Decaux/RC/RX/LRX Series - New Construction Installation



BEFORE YOU BEGIN

Read these instructions completely and carefully.



⚠ WARNING / AVERTISSEMENT

RISK OF ELECTRIC SHOCK

- Turn power off before inspection, installation or removal.
- Properly ground electrical enclosure.

RISK OF FIRE

- Follow all NEC and local codes.
- Use only UL approved wire for input/output connections.
Minimum size 18 AWG (0.75mm²).
- Do not install insulation within 3 inches (76 mm) of luminaire top.

RISQUES DE DÉCHARGES ÉLECTRIQUES

- Coupez l'alimentation avant d'inspecter, installer ou déplacer le luminaire.
- Assurez-vous de correctement mettre à la terre le boîtier d'alimentation électrique.

RISQUES D'INCENDIE

- Respectez tous les codes NEC et codes locaux.
- N'utilisez que des fils approuvés par UL pour les entrées/sorties de connexion.
Taille minimum 18 AWG (0.75mm²).
- Maintenir une distance de 76 mm (3 pouces) entre le luminaire et l'isolant.

Save These Instructions

Use only in the manner intended by the manufacturer.
If you have any questions, contact the manufacturer.

This device complies with Part 15 of the FCC Rules. Operation is subject to the following two conditions: (1) This device may not cause harmful interference, and (2) this device must accept any interference received, including interference that may cause undesired operation. CAN ICES-005(A)/NMB-005(A)

Note: This equipment has been tested and found to comply with the limits for a Class A digital device, pursuant to part 15 of the FCC Rules. These limits are designed to provide reasonable protection against harmful interference when the equipment is operated in a commercial environment. This equipment generates, uses, and can radiate radio frequency energy and, if not installed and used in accordance with the instruction manual, may cause harmful interference to radio communications. Operation of this equipment in a residential area is likely to cause harmful interference in which case the user will be required to correct the interference at his own expense.

Prepare Electrical Wiring



Electrical Requirements

- The LED luminaire must be connected to the mains supply according to its ratings on the product label.
- Class 1 wiring should be in accordance with NEC.

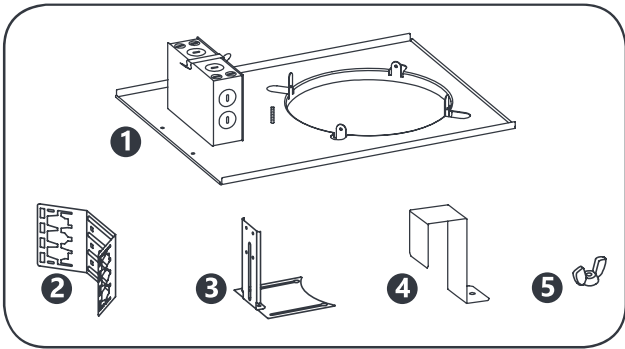


Grounding Instructions

- The grounding and bonding of the overall system shall be done in accordance to local electric code of the country where the luminaire is installed.

Provided Components

The components have been properly packed to avoid damage during transit. Inspect the components to confirm there is no physical damage. Do not install damaged components.



Provided Item	Qty.
1 Frame (4-inch, 6-inch, 8-inch, 10-inch or 12-inch)	1
2 Mounting brackets	2
3 L-Bracket	2
4 U-Bracket (used only with RC/LRC Series Installs)	1
5 Wing nut	3

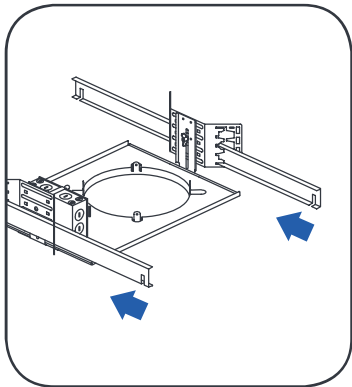
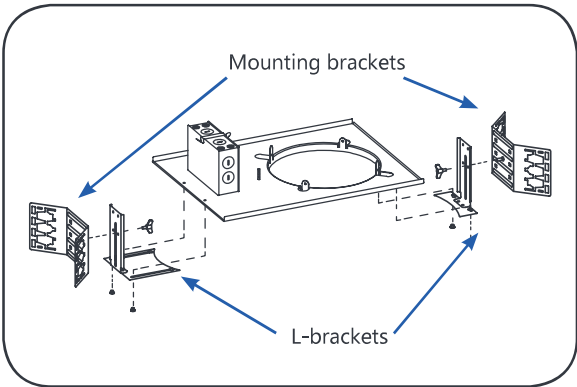
NOTE: Part 4 and 5 are only for RC/LRC product.

Option A: If no holes are present on short side, use #8-1/2" self-drilling screws

Option B: If holes are present on the short side, use the screws provided with the frame.

Fixture Diameter	Ceiling Hole Diameter
LRXR4	4.9-5.2in
RC6/LRC6	6.4-7.2in
RX6/ LRXR6/ LRXGR6	5.91-6.60in
RC8/LRC8	7.5-8.9in
RX8/LRXR8	7.68-8.27in
LRXR10	10.2-11.0in
LRXR12	12.2-13.0in

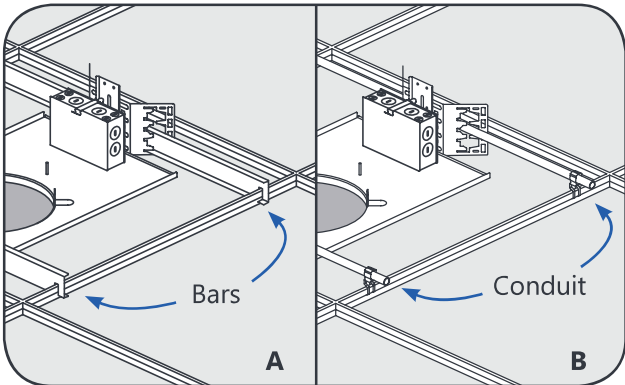
Frame Installation



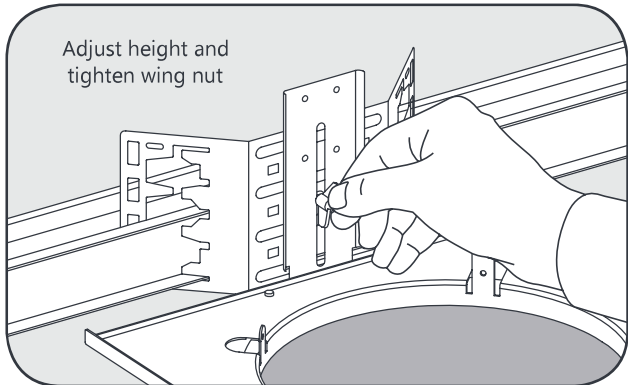
1 Cut the appropriate size hole into the ceiling tile. Ensure frame hole diameter matches fixture diameter.

2 Place side L-brackets on existing frame screws and tighten with screwdriver on both sides of the frame. Then attach mounting brackets to both L-brackets with provided wing nuts.

3 Slide hanger bars through adjustable mounting brackets.



4 **Option A:** Mount fixture by attaching hanger bars to T-Grid ceiling (BH3 SKU 94890)
Option B: Mount fixture with 1.2" EMT conduit (not supplied)



5 Adjust fixture height to be flush with ceiling and tighten both mounting bracket wing nuts.

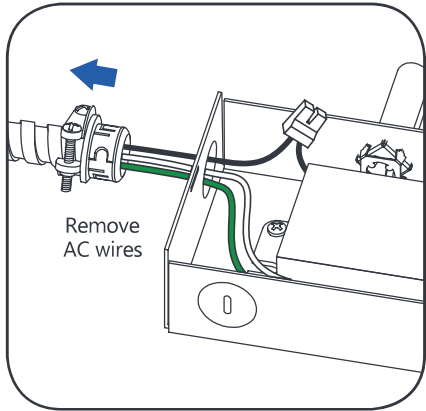
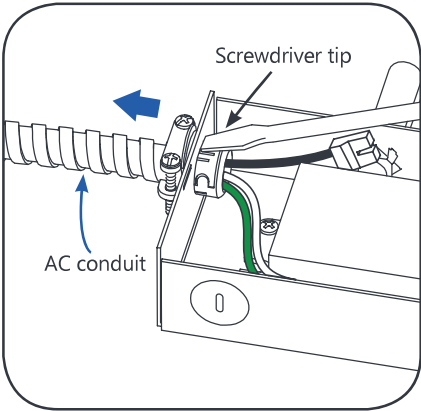
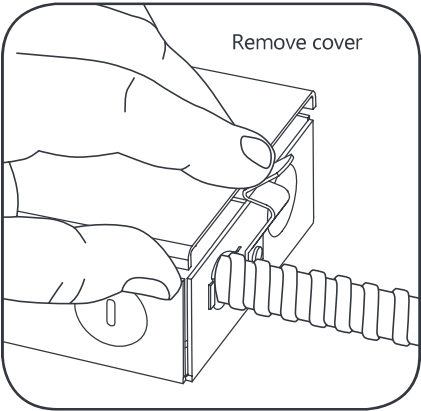
RC/Decaux Max-Series Mounting

(RX-Series skip to step 15. LRXR and LRXG - Series, skip to step 18.

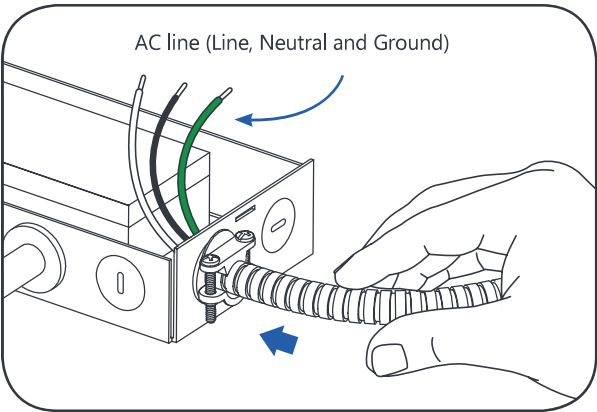
Lumen Level	Maximum Number of Fixtures (120V Input / 277V Input)
1000	84 / 195
1500	77 / 179
2000	59 / 138
3000	38 / 89
4000	24 / 57

Minimum Spacing Requirements for all Fixture Configurations	
Center to center of adjacent luminaires	24"
Top of Luminaire to overhead building member	3"
Luminaire center to side building member	12"

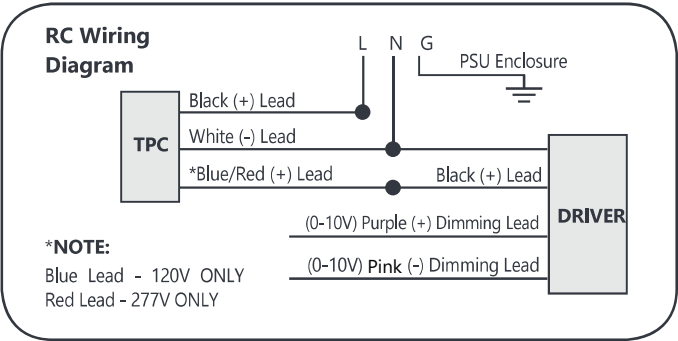
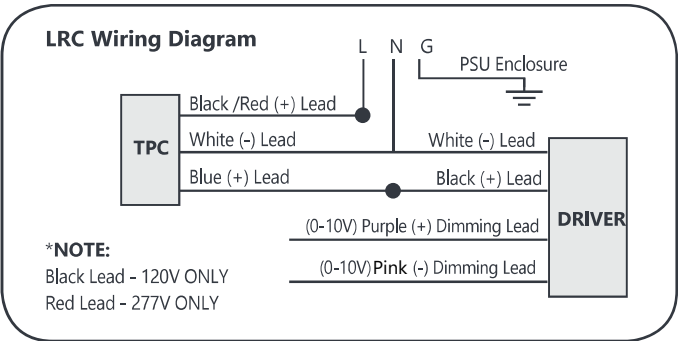
For additional information, refer to RC-series or LRC-series Installation Guides

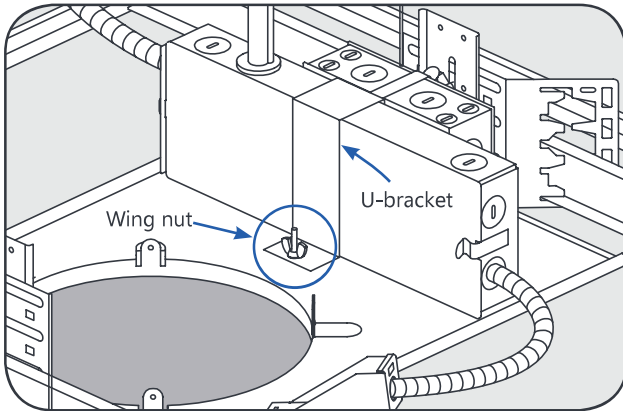


6 Open RC/LRC PSU box cover, disconnect AC conduit. Remove AC conduit wire from PSU box knockout hole using flat head screwdriver.

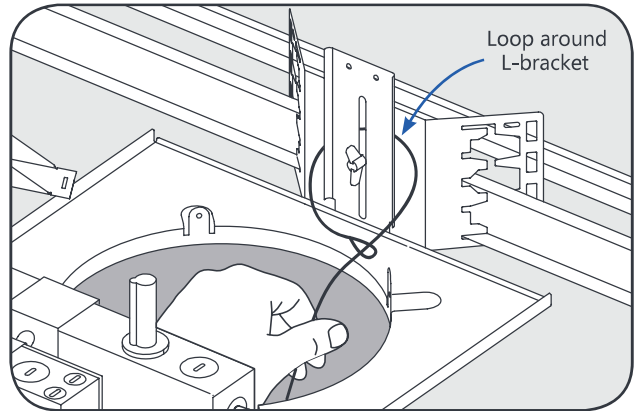


7 Insert AC line wires into the PSU box through the knockout hole and connect wires (see wiring diagrams to the right)

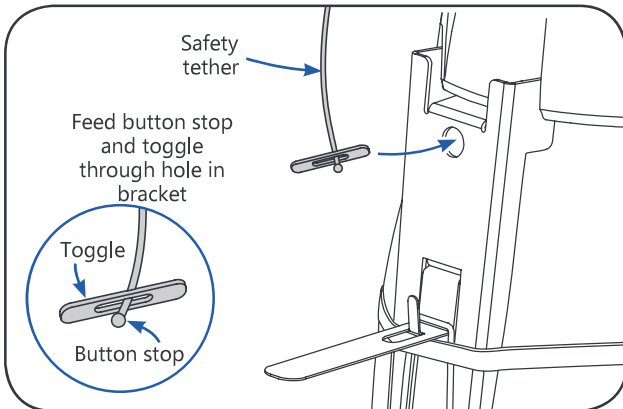




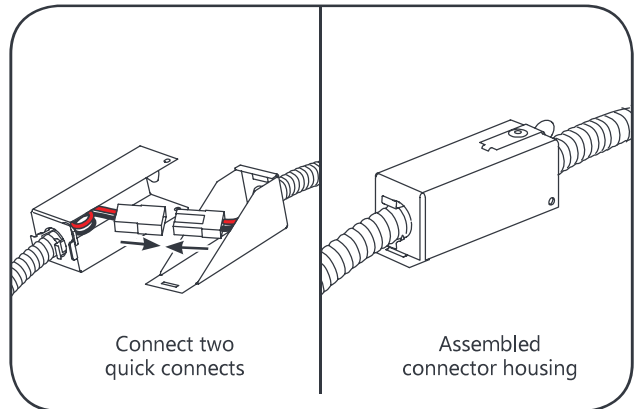
- 8** Place PSU box onto frame next to unused junction box and secure with U-bracket by tightening wing nut.



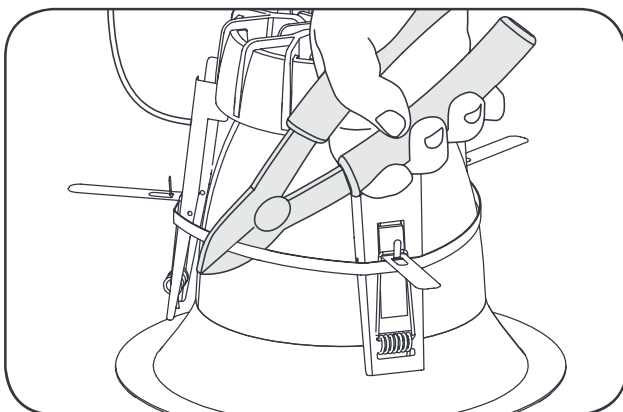
- 9** Take the provided safety tether and loop one end of the tether around the L-bracket.



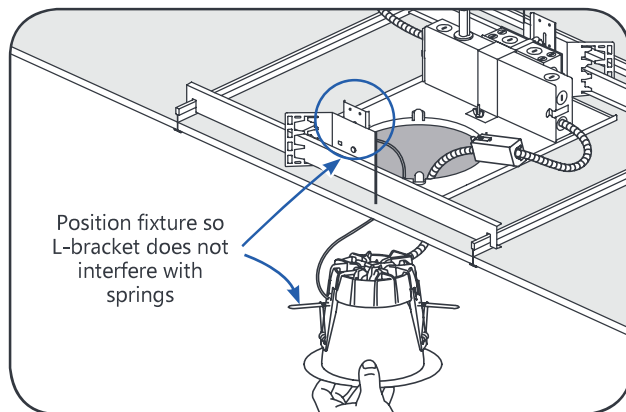
- 10** Place PSU box onto frame next to unused junction box and secure with U-bracket by tightening wing nut.



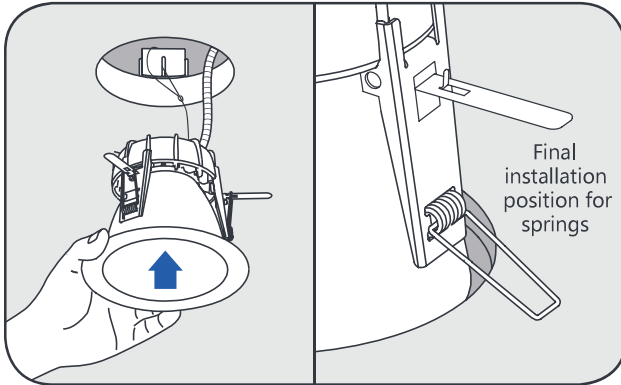
- 11** Plug together the light fixture to the driver enclosure with the supplied quick connects and assemble the connector housing once finished.



- 12** Cut cable tie on light fixture

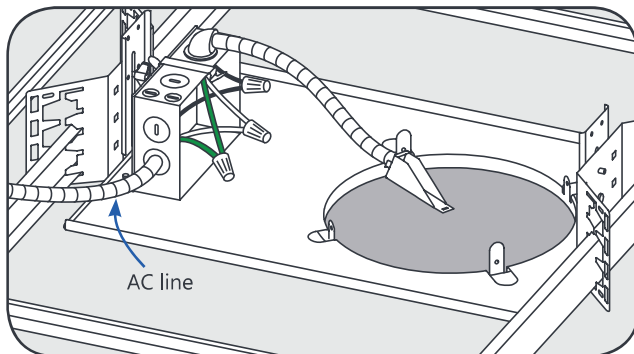


- 13** Align the fixture so that two of the three springs are on each side of the L-bracket. This is necessary in order to make sure that when the springs release, the L-bracket does not interfere and prevent the springs from making contact with the top of the ceiling for proper support.

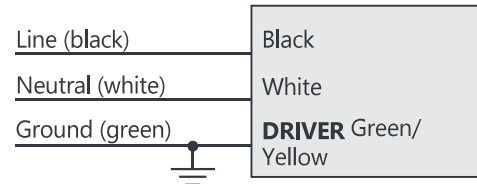


- 14** Push fixture through the hole in the ceiling. This will engage the protruding arms, thus, releasing the springs. The springs will draw the fixture up into the ceiling and hold it tightly in place.

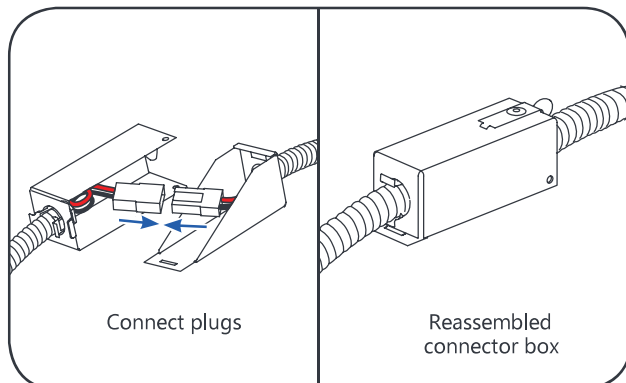
RX Series Mounting



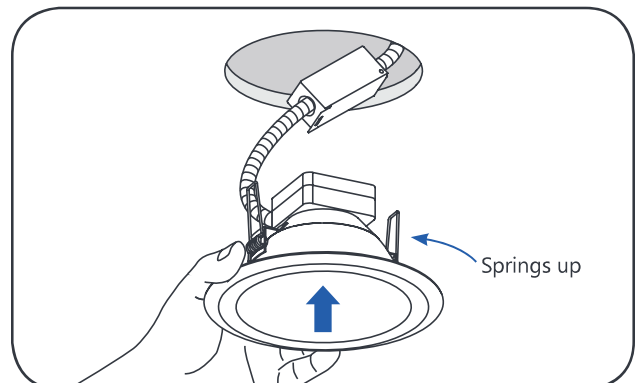
Wiring Diagram



- 15** Connect AC line to existing junction box. Connect conduit fitting to the existing junction box. Connect the black, white, and green/yellow wires of the input leads to the black, white and green AC line wires using UL Listed twist-on wire connectors and close the junction box (see wiring diagram).



- 16** Connect the two quick connectors and reassemble the connector box.



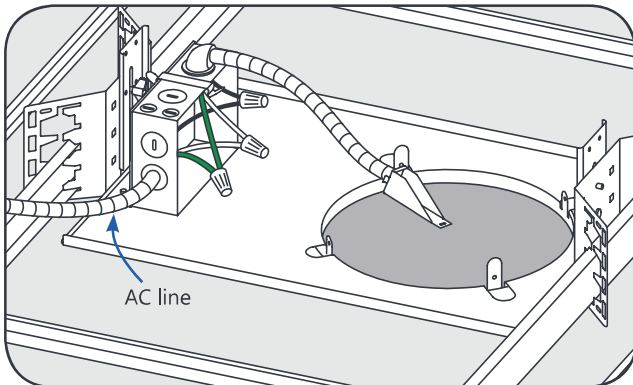
- 17** Load springs into an upright position by twisting the springs upware. Carefully insert the fixture into the frame hole. Ensure fixture is secure.

CAUTION

RISK OF PERSONAL INJURY - Operators shall ensure no appendages are in the path of the torsion springs as they are a pinch hazard when released. The springs will release when the arm is flexed downward. Be cautious that no body part is in the path of the spring when released.

RISQUE DE BLESSURE CORPORELLE - Les techniciens veilleront à ce qu'aucun appendice ne se trouve sur le chemin des ressorts de torsion, car ils présentent un risque de pincement lorsqu'ils sont libérés. Les ressorts seront libérés au moment de fléchir le bras vers le bas. Faites attention à ce qu'aucune partie du corps ne se trouve sur le chemin du ressort à sa libération.

LRX Series Mounting

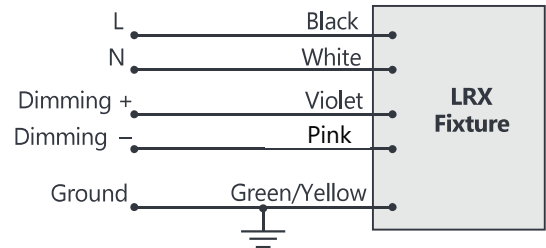


- 18** Connect conduit end with input leads to existing junction box and make proper connections. Connect the black, white and green/yellow wire of the input leads to the black, white and green wires using twist-on wire connectors and close junction box.

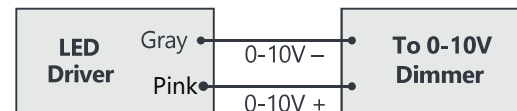
Optional dimmer: When connecting a dimming controller, wires must be run through another separate knockout hole. Connect the violet (dimming +) and pink (dimming -) wires to the violet and pink wires of the fixture.

Note: Cap unused dimming leads with wire nuts

Wiring Diagram



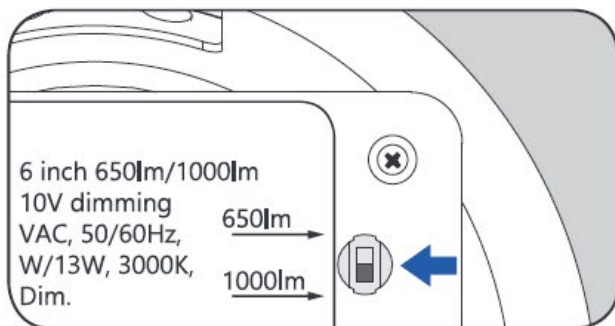
0-10 Volt Dimming



For dimming device compatibility for 0-10V and phase cut dimming, please refer to:

www.LED.com

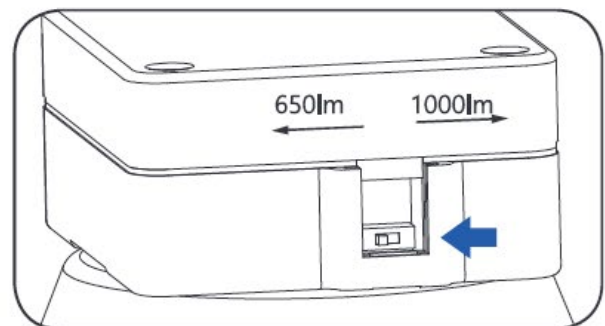
19 Adjusting Lumen Output (for compatible fixtures only)

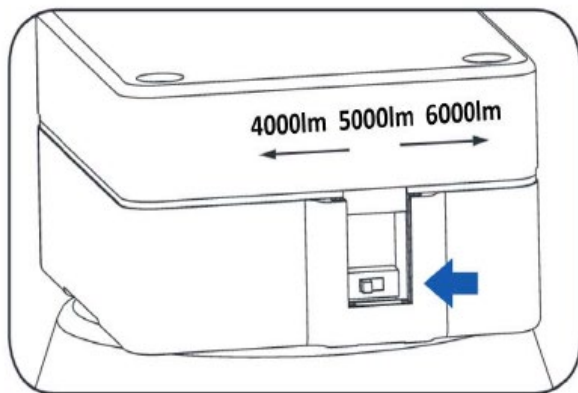


Note:

For 1000/650lm luminaires, the default lumen output is 1000lm. Push the switch up to activate the 650lm setting.

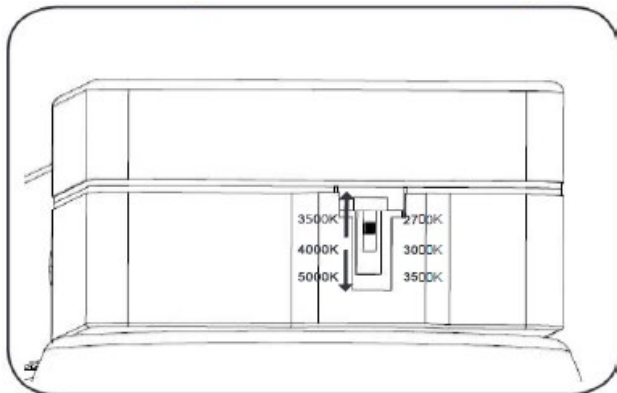
For 4000/3000lm luminaires, the default lumen output is 4000lm. Push the switch up to activate the 3000lm setting.



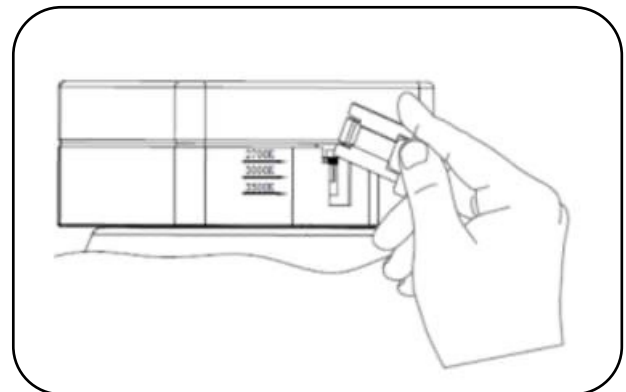


Note: For 10inch and 12inch adjustable lumen fixtures, the default lumen output is set to 6000lm. Push switch left to activate 5000lm and 4000lm respectively.

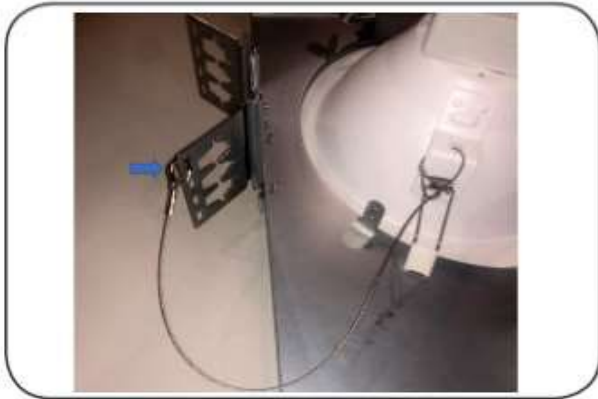
20 Adjusting CCT (for compatible fixtures only)



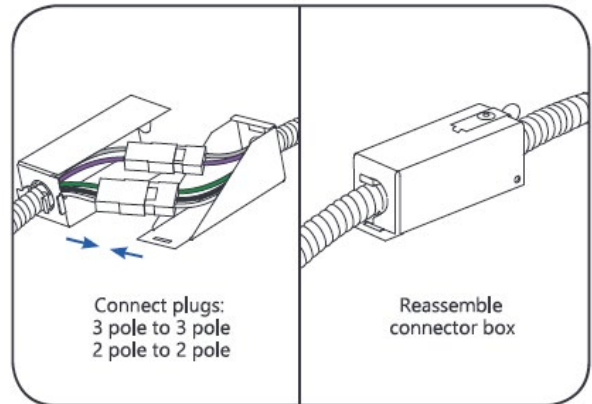
Note:
For 2700K/3000K/3500K, default output CCT is 3000K. Push switch UP to select 2700K or DOWN to select 3500K.
For 3500K/4000K/5000K, default output CCT is 4000K. Push switch UP to select 3500K and DOWN to select 5000K



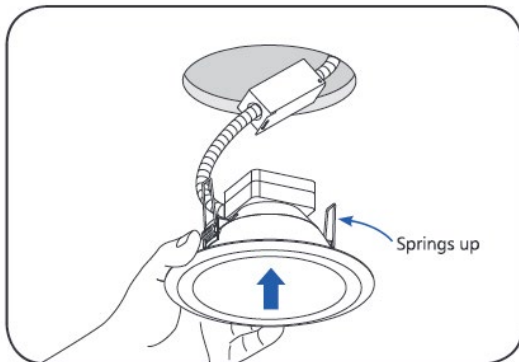
Note: The cover of the CCT switch can be used as a tool for switching CCT settings more easily.



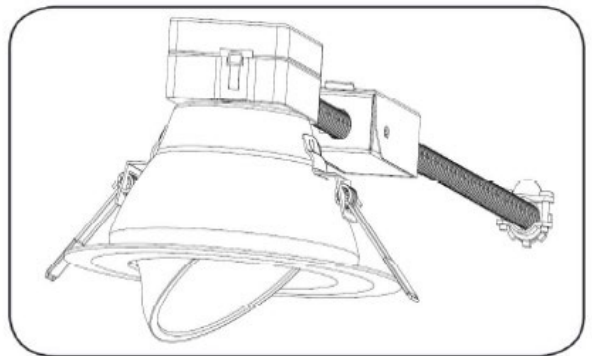
- 21** Note: Applicable only to 10in and 12 in Fixtures
Affix the hook of the safety tether onto the bracket of the frame kit.



- 22** Connect the two quick connectors and reassemble the connector box.



- 23** Load springs into an upright position by twisting the springs upward a. Carefully insert the fixture into the hole of the rough-in frame. Verify that the reflector trim is flush to the ceiling.



- 24** Once installed, LRX Gimbal downlight's light engine can be rotated up to 359° horizontally and tilted up to 35° vertically.

Note: it is recommended to use gloves while handling and adjusting the Gimbal light engine to prevent dirt and oils from contaminating the surface of the luminaire.

⚠ CAUTION/ATTENTION

RISK OF PERSONAL INJURY - Operators shall ensure no appendages are in the path of the torsion springs as they are a pinch hazard when released. The springs will release when the arm is flexed downward. Be cautious that no body part is in the path of the spring when released.

RISQUE DE BLESSURE CORPORELLE - Les techniciens veilleront à ce qu'aucun appendice ne se trouve sur la chemin des ressorts de torsion car ils présentent un risque de pincement lorsqu'ils sont libérés. Les ressorts seront libérés au moment de fléchir le bras vers le bas. Faites attention à ce qu'aucune partie du corps ne se trouve sur le chemin du ressort à sa libération.