

PRECAUTIONS

- Read and understand all instructions before beginning installation.
- NOTICE: For installation by a licensed electrician in accordance with National and/or local Electrical Codes and the following instructions.
- Disconnect switch or a circuit breaker must be provided and marked as the disconnecting device.
- Disconnect switch / circuit breaker must be within reach of operator.
- CAUTION: RISK OF ELECTRICAL SHOCK. Turn power off at service panel before beginning installation. Never wire energized electrical components.
- CAUTION: USE COPPER CONDUCTOR ONLY
- Confirm device ratings are suitable for application prior to installation. Use of device in applications beyond its specified ratings or in applications other than its intended use may cause an unsafe condition and will void manufacturer's warranty.
- Use only approved materials and components (i.e. wire nuts, electrical box, etc.) as appropriate for installation
- NOTICE: Do not install if product appears to be damaged.

SAVE THESE INSTRUCTIONS!

If you have questions, call Current Lighting Control Service at: 1-877-584-2685 (LTG-CNTL) in the USA and Canada.

DESCRIPTION

The CLCTUBxx is the box ("tub") for the Modular Lighting Control System.

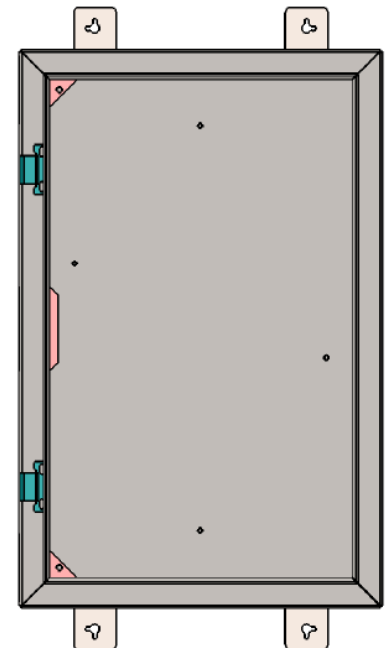
The complete assembly includes one each of the following:

1. Tub (CLCTUBxx)
2. Interior (CLCINTxx)
3. Power Supply (CLCXFRxxx)
4. Cover (CLCCOVxxx)

Separating the modules simplifies installation. The tub can be mounted early to allow conduit installation and rough-in wiring. The interior, which includes the relays and terminations, simply slides into the tub. The lighting circuits and low-voltage control wiring can then be terminated and the cover installed.



Standard Tub

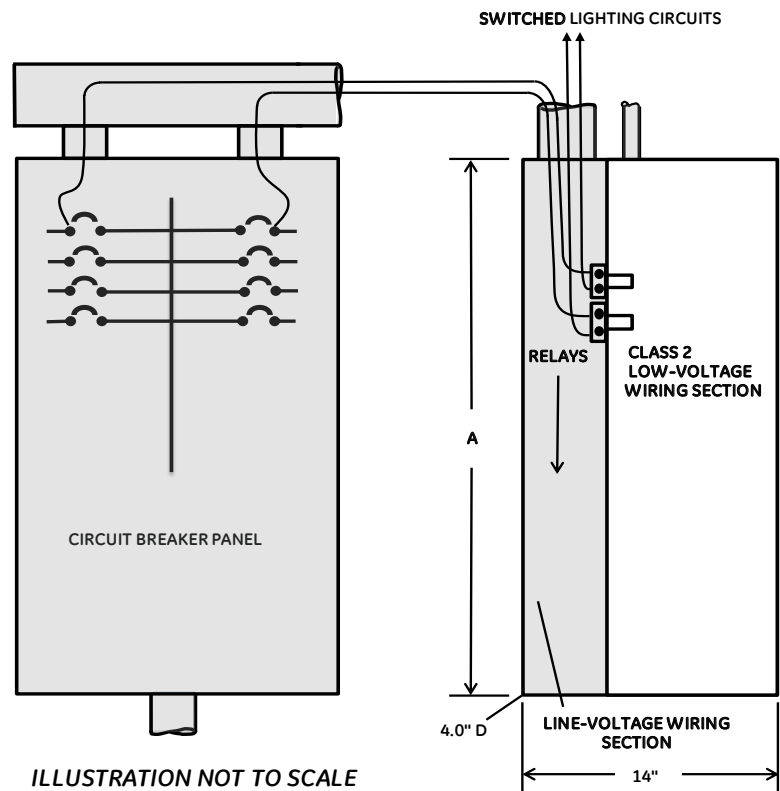


SS4X, PS4
NEMA-4. NEMA-4X

Typical Mounting Configuration

Tub Capacity	A Dimension	
	(Standard)	(SS4x,PS4)
12	23"	26"
24	38"	41"
36	49"	52"
48	60"	63"

Tub Capacity	Conduit Size	
	Mains	Low Voltage
12	1.5"/2"	0.5"/0.75"
24	1.5"/2"	0.5"/0.75"
36	2"/2.5"	0.5"/0.75"
48	2"/2.5"	0.5"/0.75"



Installation

ENVIRONMENT

- Mount Standard Tub in indoor area
- SS4X, PS4 indoor or outdoor area
- 12 Panel: 0°C to 40°C @30a per relay or 0°C to 50°C @25a per relay
- 24 Panel: 0°C to 40°C, 25a per relay
- 36/48 Panel: 0°C to 40°C, 20a per relay
- 10 To 90% relative humidity, non-condensing (standard tub)
- 15 Volts/meter, 10khz –2ghzmax. Rfi
- Stationary applications

MOUNTING

- Orientation
 - Tub should be level, plumb and rigidly installed with hardware sufficient to hold 75 lbs. (34kg) minimum; 220 lbs. (100kg) minimum for SS4X, PS4.
 - Arrow on nameplate label should be pointing up.
- Surface Mount Covers
 - Allow a minimum of 1/4" between adjacent panels for shoebox cover clearance.
- Wiring
 - Line Voltage – Route line voltage wiring through knockout (size above) in either the top or bottom of the tub.
 - Low Voltage – Route Class 2 wiring from switches, sensors, photocells and data-line through knockout (size above) in top or bottom.
 - SS4X, PS4 – Knockouts are not provided. Drill or punch holes for Line Voltage and Low Voltage wiring. Conduit sealant must be used to prevent moisture or gases from entering the tub.
 - SS4X, PS4 – Once the interior has been installed and wired, Install the Line Voltage cover over the Line Voltage Wiring section with the captive screws.

Separation Brackets Installation

Due to the larger size of the SS4x and PS4 tubs, brackets must be installed once the interior has been installed in order to Maintain separation between the low voltage section and the line voltage section.

Locate Brackets

Locate the brackets, screws and nuts included with the CLCTUBxxSS4X or CLCTUBxxPS4. See Figure 1.

Install Brackets

Mount the brackets to the portion of the CLCINTxx that separates the low voltage and line voltage sections as shown in Figures 2 and 3.



Figure 1



Figure 2

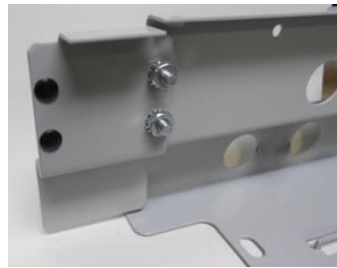


Figure 3

Line Voltage Cover Installation

Once the Interior CLCINTxx has been mounted and all modules and wiring have been completed, mount the Line Voltage Cover as shown in Figure 4, to the right.

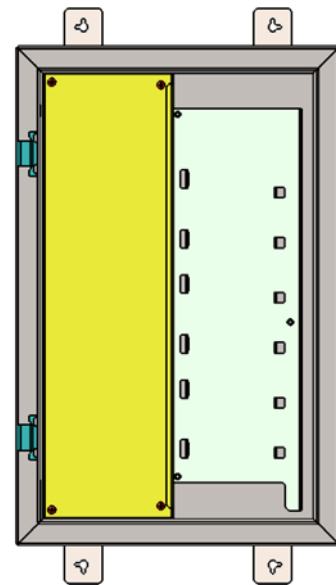


Figure 4