

Lumination® Elementaire Driver Replacement

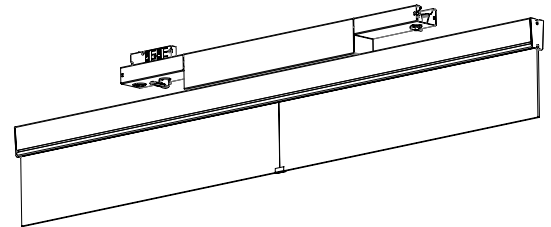
HTEK/TEK Mounting (LEL Series)



BEFORE YOU BEGIN

Read these instructions completely and carefully.

Wear work gloves to prevent dirt and oil from being transferred to the luminaire.



⚠ WARNING / AVERTISSEMENT

RISK OF ELECTRIC SHOCK

- Turn power off before inspection, installation or removal.
- Properly ground electrical enclosure.

RISK OF FIRE

- Follow all NEC or IEC local codes.

RISK OF INJURY

- Luminaire may fall down if not locked into mounting track properly.

RISQUES DE DÉCHARGES ÉLECTRIQUES

- Coupez l'alimentation avant d'inspecter, installer ou déplacer le luminaire.
- Assurez-vous de correctement mettre à la terre le boîtier d'alimentation électrique.

RISQUES D'INCENDIE

- Respectez tous les codes NEC ou IEC ainsi que les et codes locaux applicables.

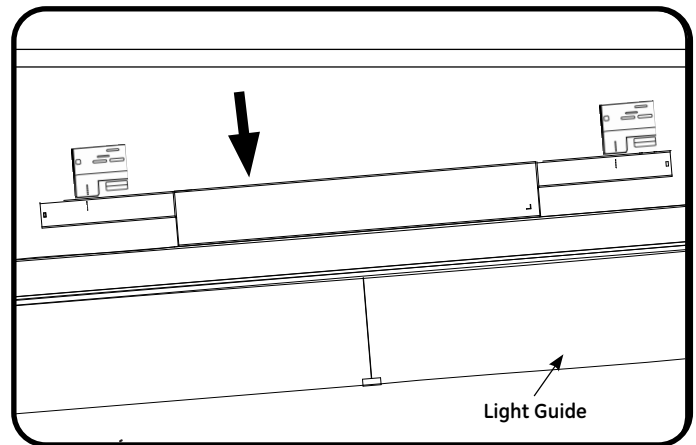
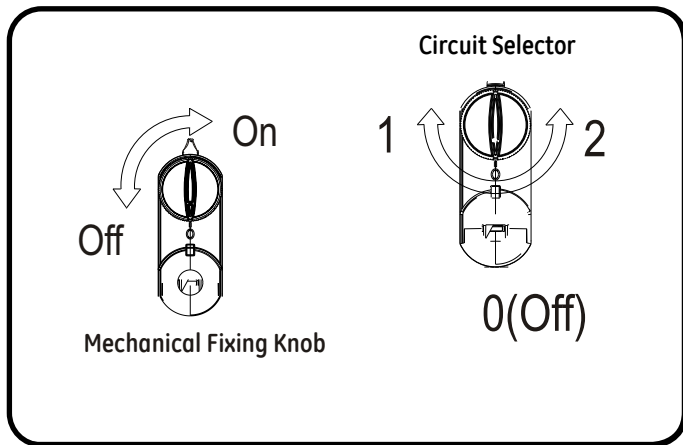
RISK OF INJURY

- Le luminaire pourrait tomber s'il n'est pas verrouillé en place correctement aux rails de montage.

Save These Instructions

Use only in the manner intended by the manufacturer. If you have any questions, contact the manufacturer.

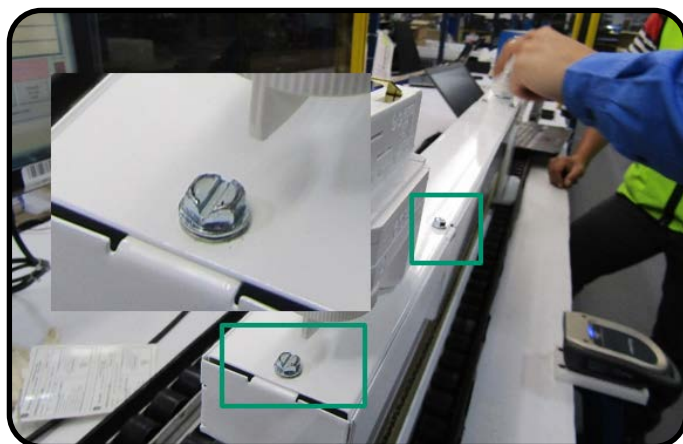
Luminaire Removal:



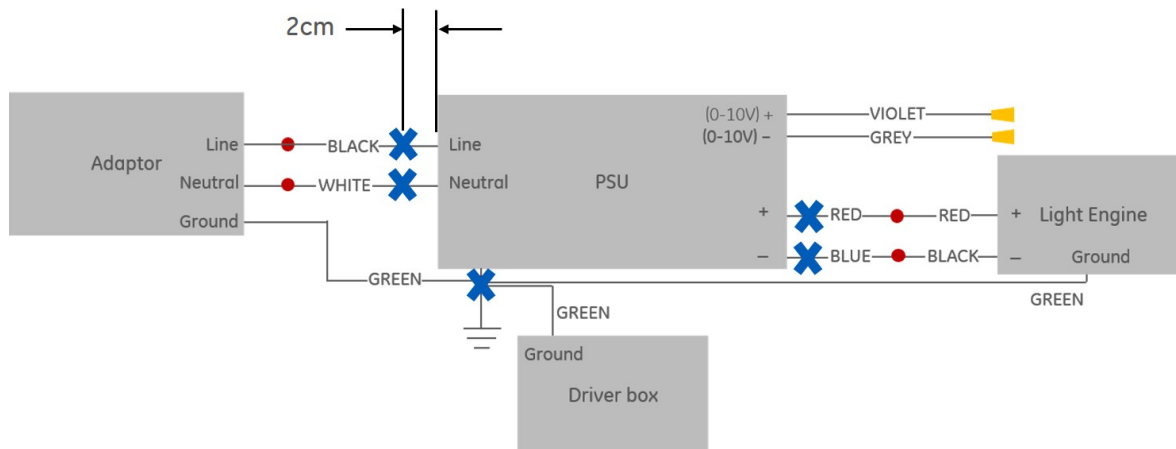
- 1 Choose Mechanical fixing knob and Circuit selector.

RISK OF DAMAGE: Make sure the luminaire is only carried out by holding two ends of gear box. Do not touch the light guide when removing the fixture from the packaging or during the installation.

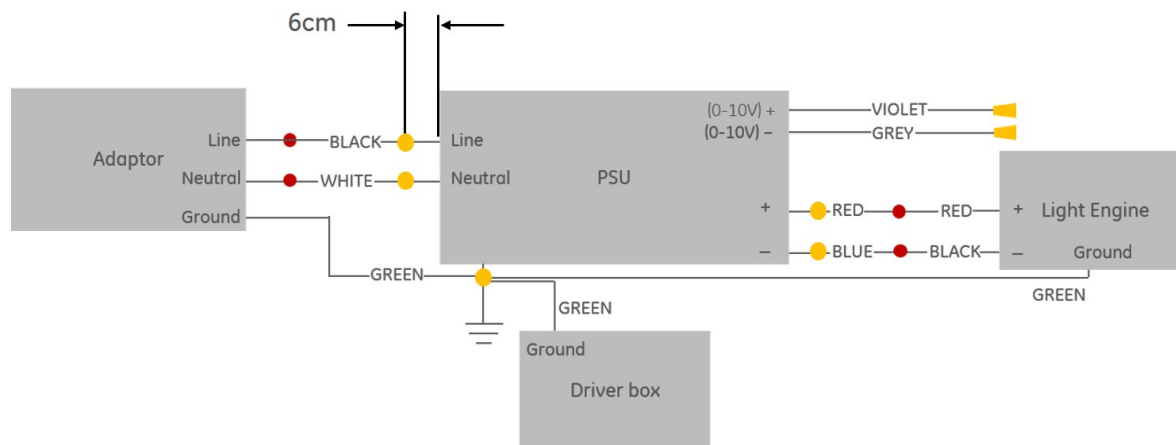
- 2 To remove fixture, put Circuit Selector to 0 and Mechanical Knob to off. Then, while tilting fixture, remove luminaire marked side first.



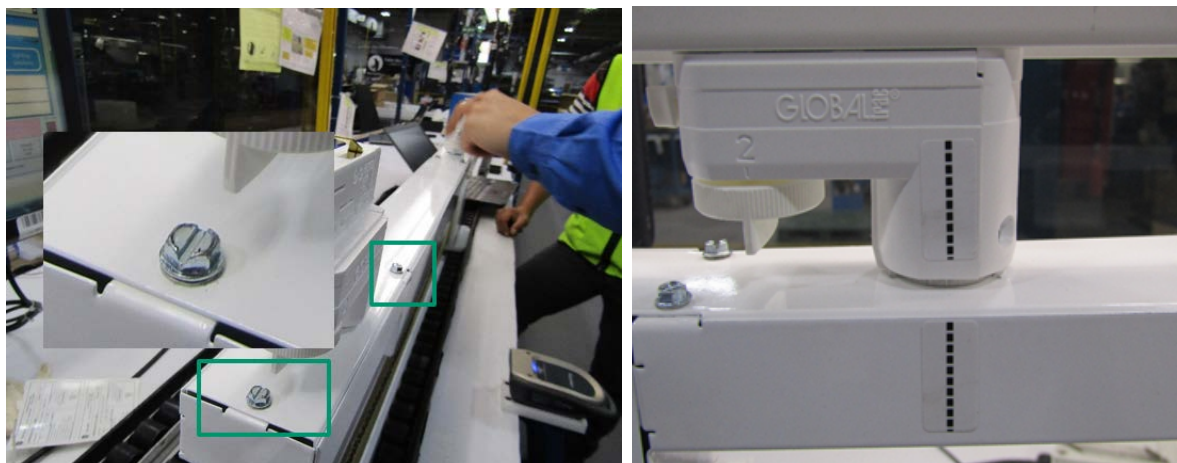
- 3 Unfasten the screws of driver box cover, and retain these screws and star washers to reuse when finishing driver replacement.



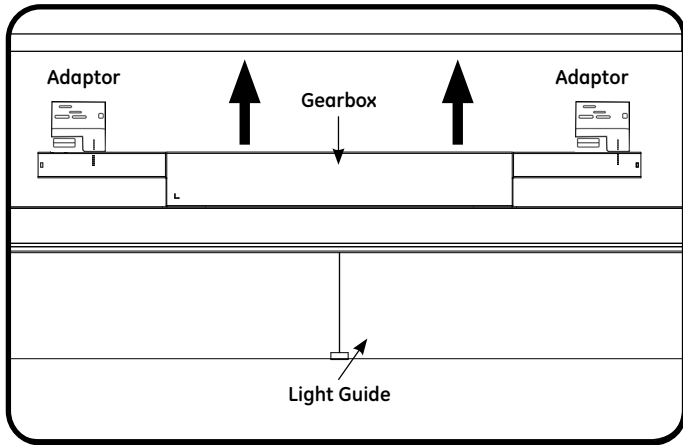
- ④ First, disconnect the driver from the luminaire by cutting the wires at the distance of 2 cm (0.75 in.) from the old driver. Then, unscrew the screws and star washers which attach the driver to the luminaire and remove the old driver.
NOTE: Keep the screws and star washers for later use.



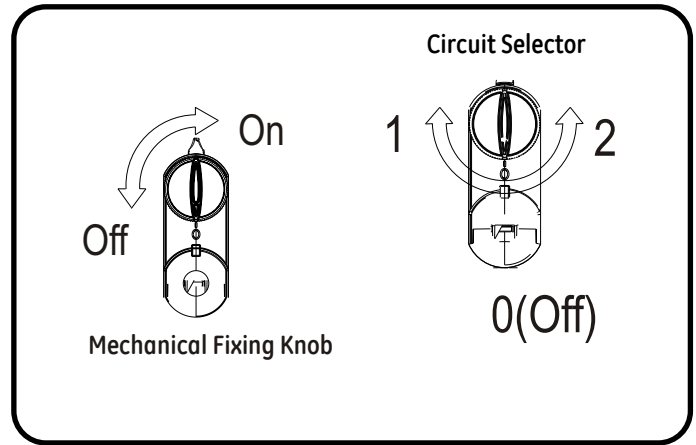
- ⑤ The length of wires from the new driver should be no less than 6 cm (2.36 in.). Reattach the new driver in the same location as the old driver using star washers and screws. Strip off 10 mm (0.4 in.) from all wires and reconnect the new driver to the luminaire with UL-certified connectors. Wires should be connected together according to the wire diagram.



- ⑥ Re-attach the driver box cover with retained screws and star washers, and confirm the screws are no strip. Must align the marking line at the same side which tie on the driver box and adaptor.

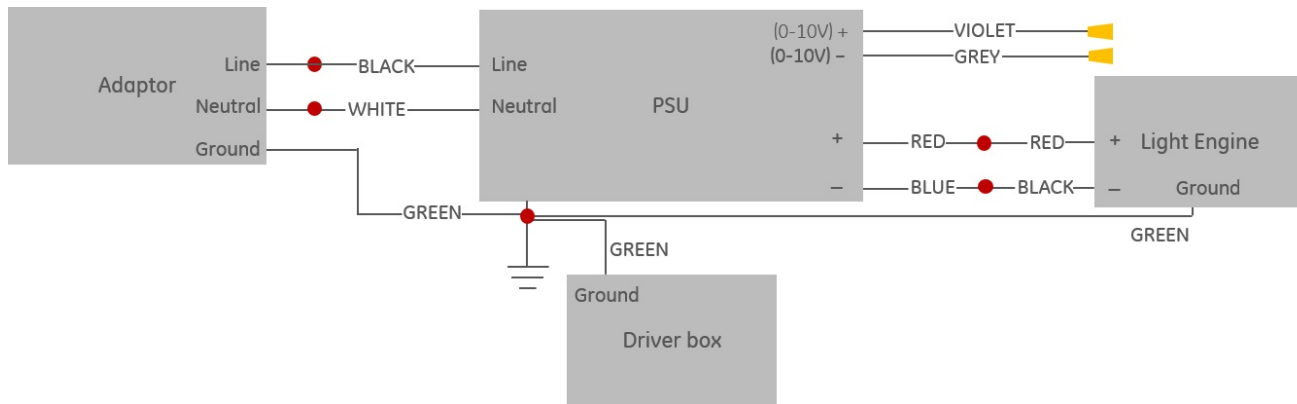


7 Ensure alignment lines on luminaire and adaptors are parallel and insert fixture vertically into track.



8 Turn mechanical fixing knob clockwise. Select the desired circuit with the circuit selector knob.

Wire Diagram for Current Driver:



This device complies with Part 15 of the FCC Rules. Operation is subject to the following two conditions: (1) This device may not cause harmful interference, and (2) this device must accept any interference received, including interference that may cause undesired operation. CAN ICES-005 (A) / NMB-005 (A)

Note: This equipment has been tested and found to comply with the limits for a Class A digital device, pursuant to part 15 of the FCC Rules. These limits are designed to provide reasonable protection against harmful interference when the equipment is operated in a commercial environment. This equipment generates, uses, and can radiate radio frequency energy and, if not installed and used in accordance with the instruction manual, may cause harmful interference to radio communications. Operation of this equipment in a residential area is likely to cause harmful interference in which case the user will be required to correct the interference at his own expense.