

# Wet Rated Batten Gen3 LED Luminaire

## LED Lighting System

GEWHxxyyBAT-3



### BEFORE YOU BEGIN

Read these instructions completely and carefully.

For the latest North American install guides for your product go to [LED.com](https://www.LED.com)

### Prepare Electrical Wiring **FOR UL ONLY**



#### Electrical Requirements

- Acceptable for use in dry, damp and wet locations.
- Follow all National Electric Codes (NEC) and local codes.

The light source of this luminaire is not replaceable; when the light source reaches its end of life the whole luminaire shall be replaced.

If the external flexible cable or cord of this luminaire is damaged, it shall be replaced by a special cord or cord exclusively available from the manufacturer, his service agent or a qualified specialist.

### Save These Instructions

Use only in the manner intended by the manufacturer.  
If you have any questions, contact the manufacturer.

### ⚠ WARNING / AVERTISSEMENT

#### RISK OF ELECTRIC SHOCK

- Turn power off before inspection, installation or removal.
- The electrical supply for each luminaire must always be connected to the male connector.
- Not to be submerged or used in a marine environment.

#### RISK OF FIRE

- Follow all local codes.

#### RISQUES DE DÉCHARGES ÉLECTRIQUES

- Coupez l'alimentation avant l'inspection, l'installation ou le déplacement.
- L'alimentation électrique pour chacun des luminaires doit toujours être branché du côté mâle de la prise.
- Ne pas submerger ou installer dans un environnement marin.

#### RISQUES D'INCENDIE

- Respectez tous les codes locaux.

This device complies with Part 15 of the FCC Rules. Operation is subject to the following two conditions: (1) This device may not cause harmful interference, and (2) this device must accept any interference received, including interference that may cause undesired operation.

CAN ICES-005 (A) / NMB-005 (A)

**Note:** This equipment has been tested and found to comply with the limits for a Class A digital device, pursuant to part 15 of the FCC Rules. These limits are designed to provide reasonable protection against harmful interference when the equipment is operated in a commercial environment. This equipment generates, uses, and can radiate radio frequency energy and, if not installed and used in accordance with the instruction manual, may cause harmful interference to radio communications. Operation of this equipment in a residential area is likely to cause harmful interference in which case the user will be required to correct the interference at his own expense.

Any changes or modifications not expressly approved by the party responsible for compliance could void the user's authority to operate this equipment.



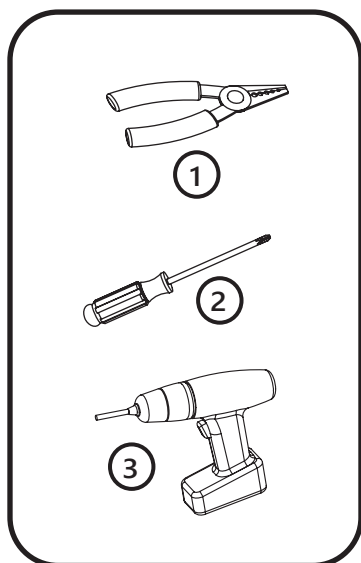
Electrical products must not be thrown out with domestic waste. They must be taken to a communal collecting point for environmentally friendly disposal in accordance with local regulations. Contact your local authorities or stockist for advice on recycling. The packaging material is recyclable. Dispose of the packaging in an environmentally friendly manner and make it available for the recyclable material collection-service.

Conforms to the following standards:  
IP66 rated



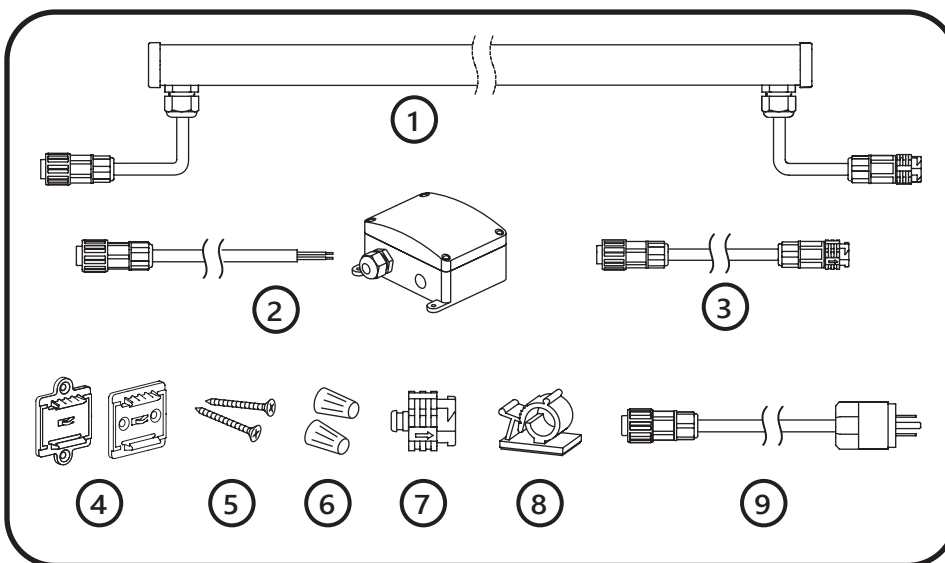
Visit [LED.com](https://www.LED.com)

## Tools Required



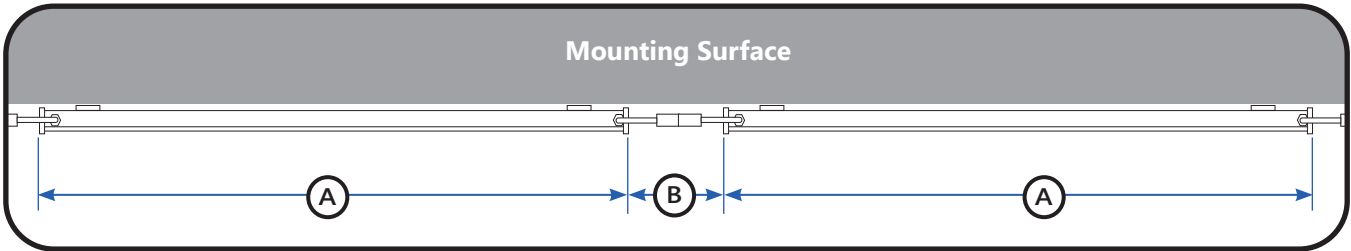
- ① Wire stripper/cutter
- ② Screwdriver
- ③ Drill with driver bit

## Components Required

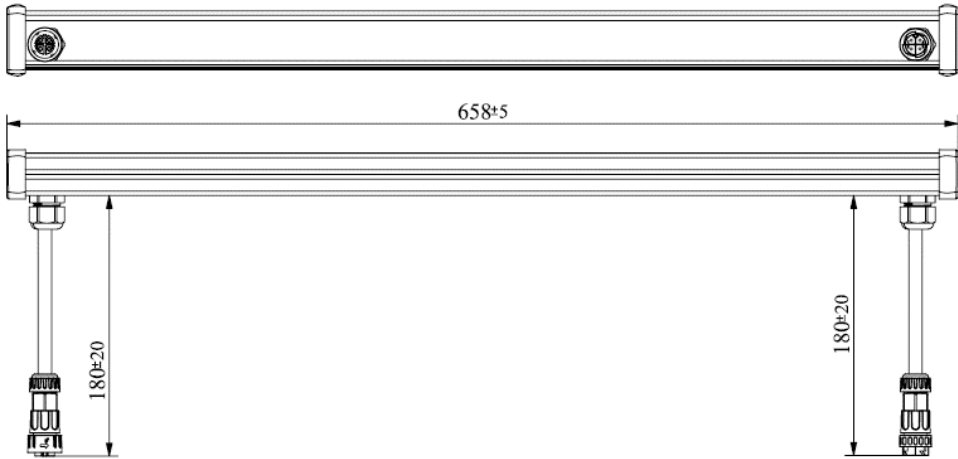


- ① Current LED Batten fixtures (2ft. or 4ft. or 6ft. or 8ft.)
- ② Junction box (93312351 - GE-JB-BAT3) and leader cable with dimming wires
- ③ *Optional* - Jumper cable (93142252 – 2ft. with dimming wire)
- ④ Mounting clips (88818 – standard) or (10734 – slim)
- ⑤ #10 (M5) self-tapping flathead screws
- ⑥ Approved 18-14 AWG (0.82-2.08 mm<sup>2</sup>) wire connectors, in-line splice connectors or alternative approved connectors.
- ⑦ End cap for connectors
- ⑧ *Optional* - Cable clamps
- ⑨ *Optional* - Leader Cable with NEMA plug

Product Length



A Luminaire length		B Minimum spacing
2 ft.	25.9" (658 mm)	0.2" (5mm)
4 ft.	47.1" (1197 mm)	0.2" (5mm)
6 ft.	73" (1854 mm)	0.2" (5mm)
8 ft.	93.8" (2382 mm)	0.2" (5mm)



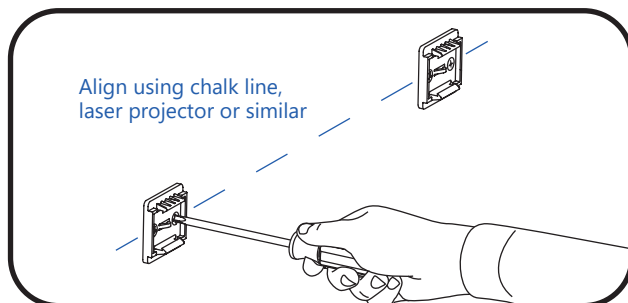
## METHOD 1

### Single Luminaire Installation

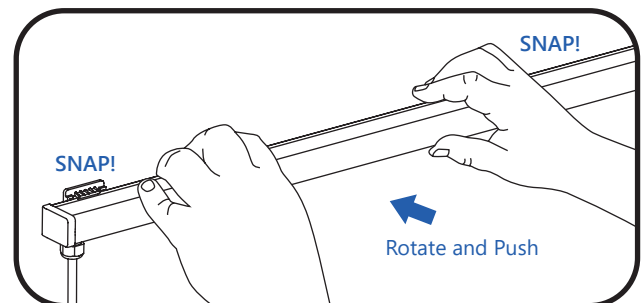
#### Before starting:

Luminaires must only be mounted using Current's standard or slim mounting clips (see *Components Required* on page 3)

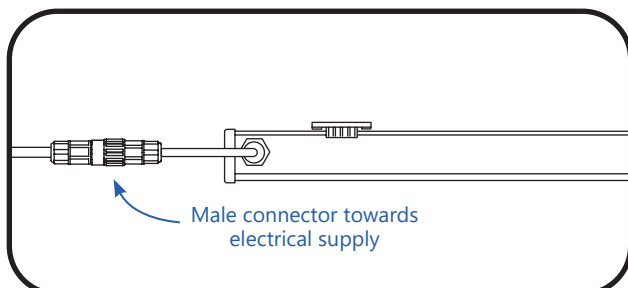
#### Mounting instructions using Current's standard and slim mounting clips.



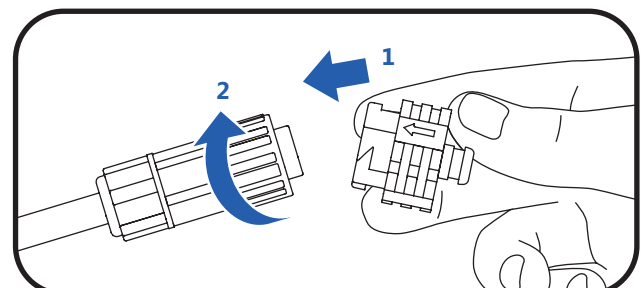
- 1 Secure each luminaire mounting clip to a rigid flat mounting surface using two #10 (M5) self-tapping flathead screws along the intended run of luminaire. **To avoid stress and damage to luminaire the entire mounting surface should be flat and the mounting clips be properly aligned.** Refer to table on page 9 for required number of mounting clips per luminaire.



- 2 Press the luminaire into its mounting clips so that the male connector is oriented towards the intended electrical supply. **TIP:** Align luminaire on one side of the mounting clips; then rotate the luminaire until it snaps into other side of the mounting clips.  
(Only for single luminaire installation)  
**Alternately:** The required mounting clips may first be pressed onto the luminaire, then the luminaire mounting clip assembly may be mounted on to the mounting surface using two #10 (M5) self-tapping flathead screws per mounting clip.



- 3 Place the luminaire on the surface with the male connector oriented towards the intended electrical supply.



- 4 If not already covered, insert an end cap into the female connector, and twist the end cap clockwise to secure.

**Go to METHOD 3 on page 8**

## METHOD 2

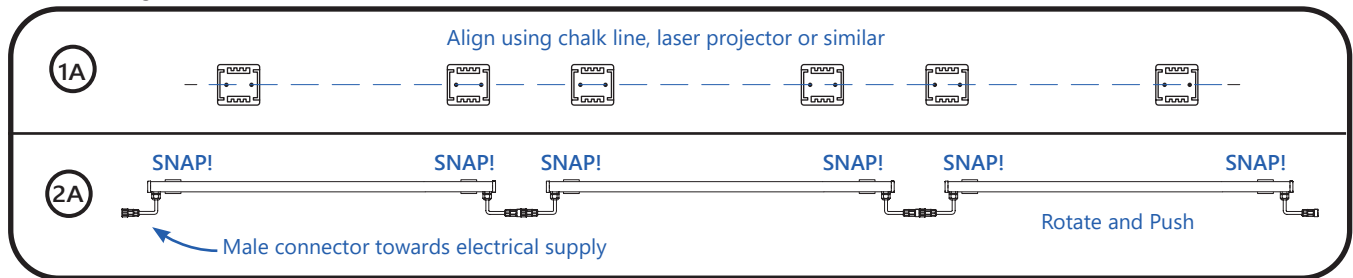
### Directly Interconnected Luminares

#### Before starting:

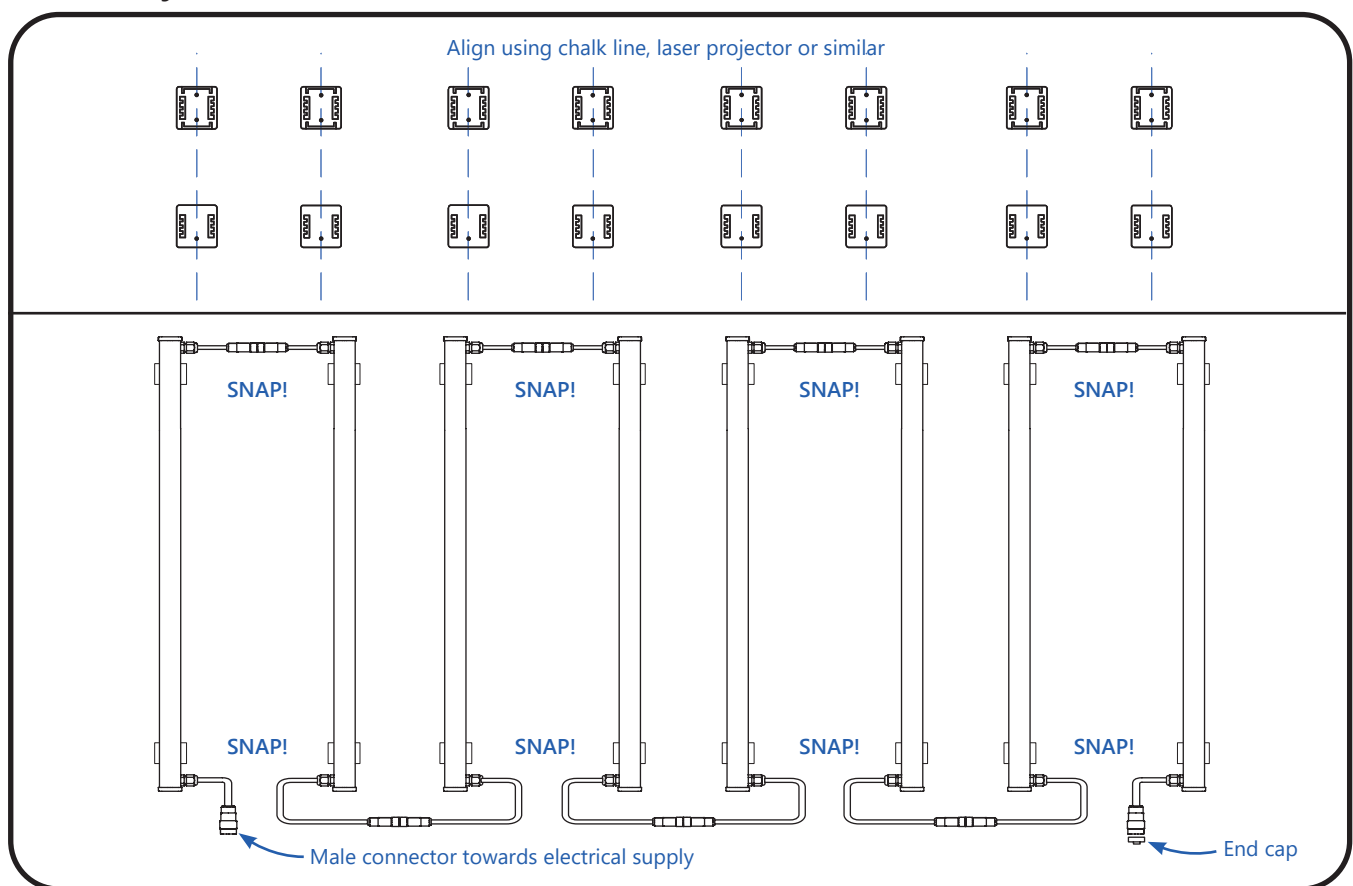
See Multiple Bar Installation Details to ensure you won't exceed the maximum run length per leader cable.

Luminares must only be mounted using Current's standard or slim mounting clips (see *Components Required* on page 3).

#### Linear Layout

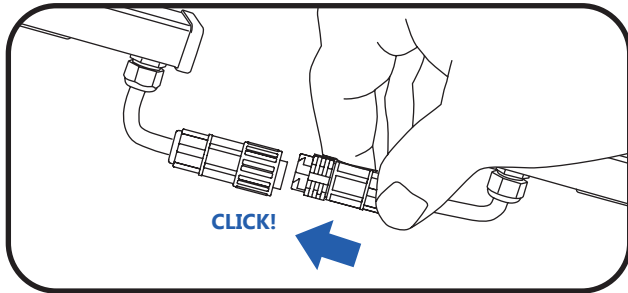


#### Parallel Layout

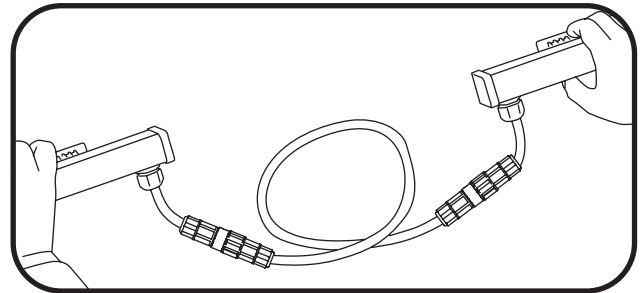


- Secure each luminaire mounting clip to a rigid flat mounting surface using two #10 (M5) self-tapping flathead screws along the intended run of luminaire. **To avoid stress and damage to luminaire the entire mounting surface should be flat and the mounting clips properly aligned.** Refer to table on page 9 for the required number of mounting clips per luminaire.

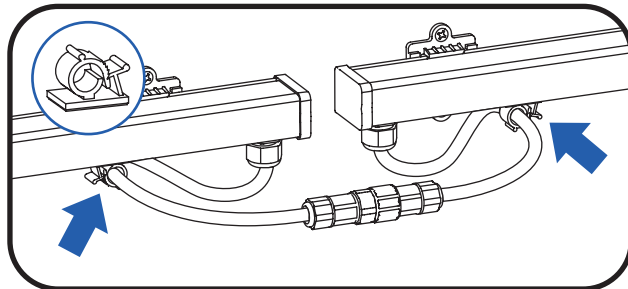
- Press the luminaire into its mounting clips so that the male connector is oriented towards the intended electrical supply. **TIP:** Align luminaire on one side of the mounting clips, then rotate the luminaire until it snaps into other side of the mounting clips.

**METHOD 2****Directly Interconnected Luminares**

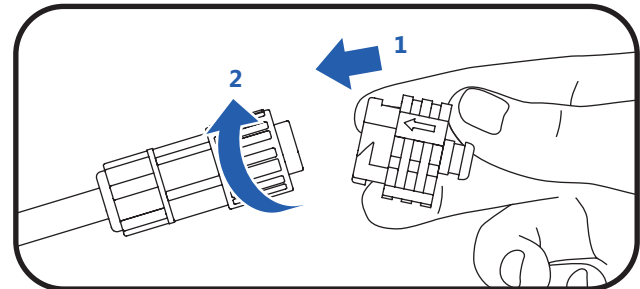
- 3A** Remove end cap from the female connector. Insert the male connector to the female connector. Make sure the connector is fully engaged as indicated by hearing a click.



- 3B** Use a jumper cable to connect luminaires if the distance between them is too long.

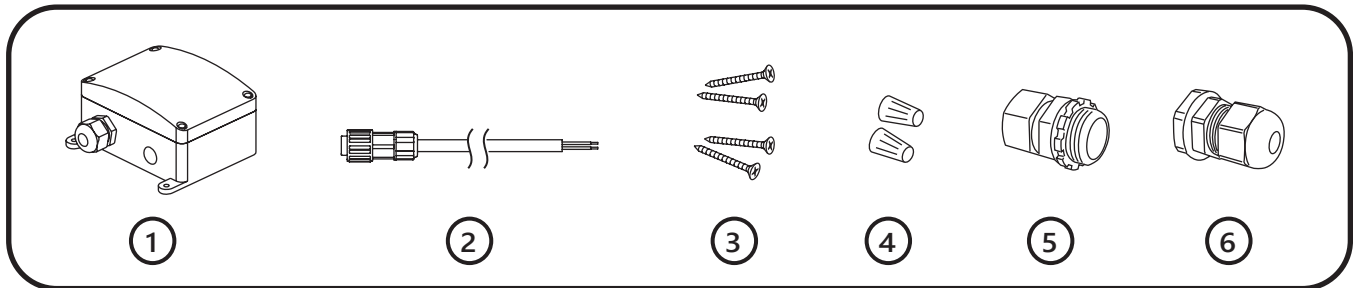


- 3C** *Optional:* Secure the cables using the optional cable clamp accessory.

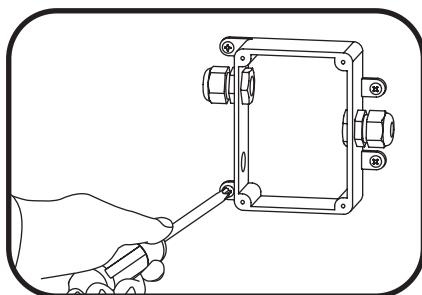


- 4** Insert an end cap into the female connector on the last luminaire in the run, and twist the end cap clockwise to secure.

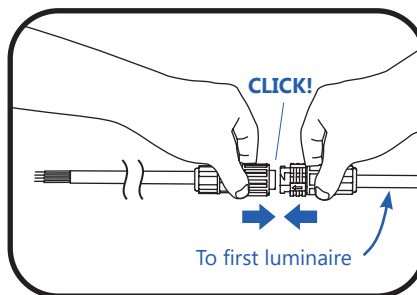
**Go to METHOD 3 on page 8**

**METHOD 3****Wiring Connections using Junction Box and Lead Cable with Dimming Wires****Junction Box and Leader Cable Components**

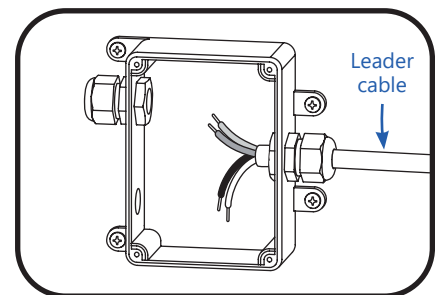
- ① Junction box (93312351 GE-JB-BAT3, includes gasketed junction box cover, cover screws, luminaire supply cord cable gland, and cable gland/w plug for dimming).
- ② GECA30A18-CC10B 10ft (3.0m) Leader cable with dimming wires.
- ③ Four M4 self tapping flathead screws (*to be supplied by installer*).
- ④ Listed Wiring Connectors suitable for use with the wire gauges involved (*to be supplied by installer*).
- ⑤ Listed Fitting suitable for a 1/2" (M22) conduit opening, connection to the branch circuit wiring method, and appropriate environmental rating for the installation (*to be supplied by installer*).
- ⑥ *Optional* - Cable gland or fitting suitable for a 1/2" (M22) conduit opening, the cable diameter for the dimming network, and appropriate environmental rating for the installation (*to be supplied by installer if the supplied gland is not otherwise suitable* —see instructions for dimming connections).

**Wiring Connections**

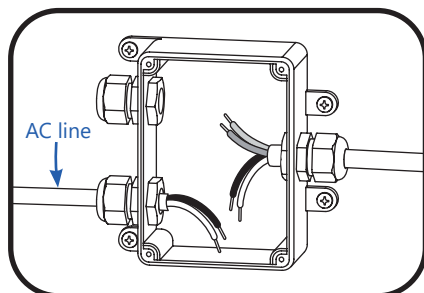
- ① Secure the junction box to a mounting surface using four (M4) self-tapping flathead screws adjacent to the supply side of the intended run of luminaire.



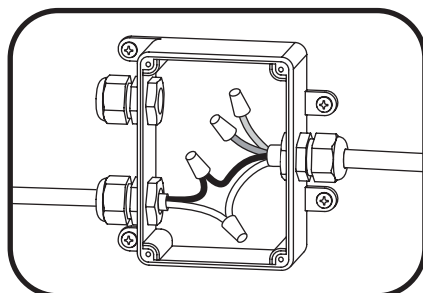
- ② Insert the female connector of the leader cable so that it fully engages the male connector of the first luminaire in the run as indicated by hearing a click.



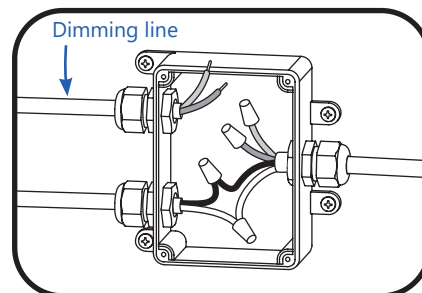
- ③ Insert the leader cable into the cable gland and tighten the cable gland bushing nut to secure the power cord.



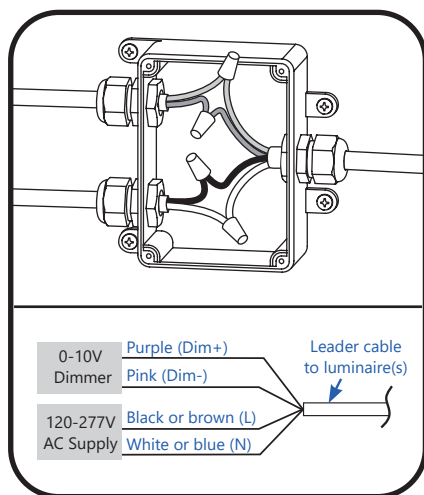
- 4 Using a Listed 1/2" Fitting suitable for the wiring method and appropriate environmental rating for the installation, bring the branch circuit conductors into the junction box.



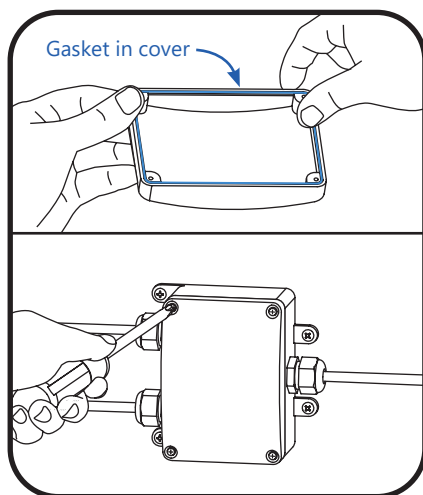
- 5 **AC Supply Wire Connections**  
Inside the junction box, connect the line and neutral wires of the AC supply source to the line (black or brown) and neutral (white or blue) wires of the leader cable using suitable wiring connectors. If 0-10V dimming will not be used, cap the dimming wires (purple and pink) with suitable wiring connectors. Do not connect the dimming wires together or to line, neutral, or ground. If 0-10V dimming will be used, proceed to Step 6.



- 6 **Wall Dimming Wire Connections**
- If the intended dimming cable is between 0.28 and 0.47 in. (7 and 12 mm) in diameter, unscrew the gland nut and remove the plug from the cable gland. If the cable is a different dimension remove the entire gland and install an appropriate 1/2" fitting rated for the environment into the open threaded open conduit connection.
  - Bring the conductors for the building dimming network into this fitting and tighten all the nuts.



- 7 Connect the DIM + (purple) to the incoming dimmer circuit +. Connect the Dim - (pink) to the incoming dimmer circuit -.



- 8 **Junction Box Cover Replacement**
- Ensure gasket is sitting in place on the inner edge of the junction box cover.
  - Fasten all 4 screws to ensure watertight seal.

**NOTE:** Be careful not to strip out the junction box enclosure by over tightening the screws.

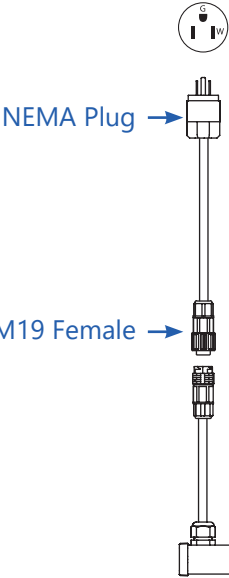


METHOD 3 – optional connection

M19 Cable Accessories

Accessory Type	SKU	Model	Description
M19 Leader Cable (NA)	93142249	GECA30A18-CD06B	6ft (1.8m) Leader with 5-15P Plug

M19 Cable Accessories Installation Example




NEMA Receptacle	5-15R	L7-15R	L6-20R	L7-20R
NEMA Plug	5-15P	L7-15P	L6-20P	L7-20P

**IMPORTANT**

- The first bar must be installed under the socket.
- Adjust the luminaire after installation to prevent the flexible cord from falling off after pulling.

Note: Dimming will not be possible when using the NEMA plug accessory.

For UL Only

 **IMPORTANT GUIDELINES / CONSEILS IMPORTANTS**

- Cables shall not be concealed or extended through a wall, floor, ceiling, or other parts of the building structure; located above a suspended ceiling or dropped ceiling; permanently affixed to the building structure.
- Cables shall be routed so that they are not subject to strain and are protected from physical damage; visible over their entire length; and used within their rated ampacity as determined for the maximum temperature of the installed environment specified in the instructions.
- Before applying power, ensure that any open female connectors in the installation are sealed with an end cap. (see Method 1, step 4)

- Les câbles ne doivent pas être cachés à l'intérieur ou passer à travers un mur, un plancher, un plafond ou d'autres parties de la structure du bâtiment; ne doivent pas être placés au-dessus d'un plafond suspendu; ne doivent pas faire partie intégrante de la structure du bâtiment.
- Les câbles doivent être installés de façon à être protégés contre l'étirement et tout autre dommage; être visibles sur toute leur longueur; utilisés dans la limite de leur capacité électrique, déterminée pour les limites de température de l'environnement spécifiée dans ce document.
- Avant de mettre sous tension, assurez-vous que les connecteurs femelles ouverts du système sont scellés avec une butée de gaine. (consulter méthode 1, étape 4).

Multiple Bar Installation Detail

Input voltage : 100VAC - 277 VAC, 50/60Hz

Lamp Length	Product Code [SKU]	Description Code	CCT	Electrical Loading Detail Typical Current (A)				Qty of Mounting Clips	Maximum Bars Per Interconnected run or M19 18AWG Leader Cable			
				For 120VAC	For 208VAC	For 240VAC	For 277VAC		For 120VAC	For 208VAC	For 240VAC	For 277VAC
2ft.	93307366	GEWH2430BAT-3	3000K	0.137	0.080	0.070	0.065	2	35	60	69	74
	93307367	GEWH2435BAT-3	3500K									
	93307368	GEWH2440BAT-3	4000K									
	93307369	GEWH2450BAT-3	5000K									
	93307500	GEWH2471BAT-3	7100K									
	93307501	GEWH2471BAT-PL3	PURPLE									
4ft.	93307502	GEWH4830BAT-3	3000K	0.241	0.141	0.123	0.113	2	20	34	39	42
	93307503	GEWH4835BAT-3	3500K									
	93307504	GEWH4840BAT-3	4000K									
	93307505	GEWH4850BAT-3	5000K									
	93307506	GEWH4871BAT-3	7100K									
	93307507	GEWH4871BAT-PL3	PURPLE									
8ft.	93307508	GEWH9630BAT-3	3000K	0.481	0.282	0.245	0.227	3	10	17	20	21
	93307509	GEWH9635BAT-3	3500K									
	93307510	GEWH9640BAT-3	4000K									
	93307511	GEWH9650BAT-3	5000K									
	93307512	GEWH9671BAT-3	7100K									
	93307513	GEWH9671BAT-PL3	PURPLE									
2ft.	93307514	GEWH48RDBAT-3	RED	0.135	0.079	0.069	0.064	2	36	61	70	75
6ft.	93307516	GEWH72RDBAT-3		0.235	0.137	0.120	0.111	3	20	35	40	43
8ft.	93307518	GEWH96RDBAT-3		0.270	0.158	0.138	0.127	3	18	30	35	38
2ft.	93307515	GEWH48BLBAT-3	BLUE	0.151	0.088	0.077	0.071	2	32	54	62	68
6ft.	93307517	GEWH72BLBAT-3		0.263	0.154	0.134	0.124	3	18	31	36	39
8ft.	93307519	GEWH96BLBAT-3		0.301	0.177	0.154	0.142	3	16	27	31	34

**Note:** Other SKUs available. For custom installation please contact us.

Product Codes

GEWZXXYYBAT-3

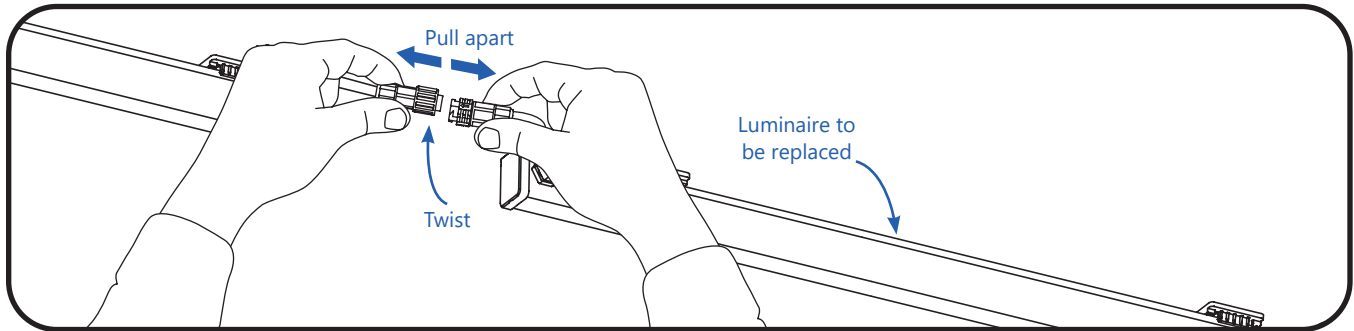
\*Key for XX: 24 = 24", 48 = 48", 72 = 72" , 96 = 96"

\*Key for YY: 30 = 3000K, 35 = 3500K, 40 = 4000K, 50 = 5000K, 71 = 7100K, RD = RED, BL = BLUE

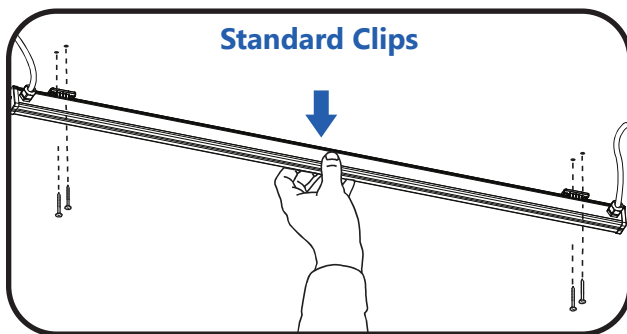
\*Key for Z: H = high

Troubleshooting

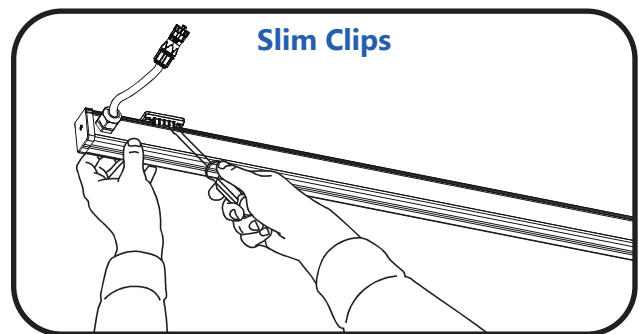
Symptom	Solution
All LED fixtures are not illuminated	<ul style="list-style-type: none"><li>• Check leader cable connection and/or check circuit breaker.</li><li>• Check plug connectors on the LED fixtures for improper connections or short circuits.</li><li>• Ensure leader cable is securely connected to the female plug connector on the first LED fixture.</li></ul>
Some LED fixtures are not illuminated	<ul style="list-style-type: none"><li>• Check plug connectors on the LED fixtures for improper connections or short circuits.</li><li>• Ensure any jumper cables are securely connected between the male/female plug connectors of the LED fixtures.</li></ul>

**METHOD 5****Replacement Instructions for Directly Interconnected Luminares**

- ① Disconnect the connector on both sides of the luminaire.



- ②A Unscrew the mounting clips to completely remove the luminaire.



- ②B Using a screwdriver, gently pry the luminaire out of the mounting clips.

- ③ To insert a new luminaire, see Method 2.

**To avoid damage, do not bend or otherwise exert excessive force on the connector during installation. Adjust the luminaire after installation to prevent the flexible cord from falling off after pulling.**