

GEM1C LED



WARNING: Fixtures must be grounded in accordance with local codes or the National Electrical Code. Failure to do so may result in serious personal injury.

CAUTION: All wiring must be done by a qualified electrician.

KEEP THIS SHEET FOR FUTURE REFERENCE.

Tools Required:

- ☐ 9/16" Wrench
- ☐ 15/16" Wrench
- ☐ 3/4" Deep Socket

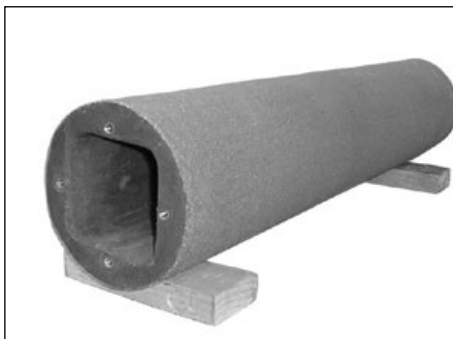
- ☐ 3/4" Wrench
- ☐ 7/16" Socket
- ☐ Drive Ratchet

Tools Provided:

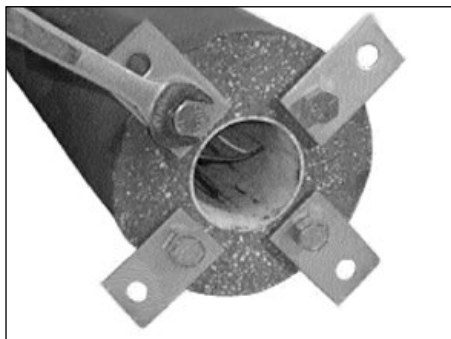
- ☐ 3/4" Wrench



Make certain electrical supply is **OFF** before starting fixture.



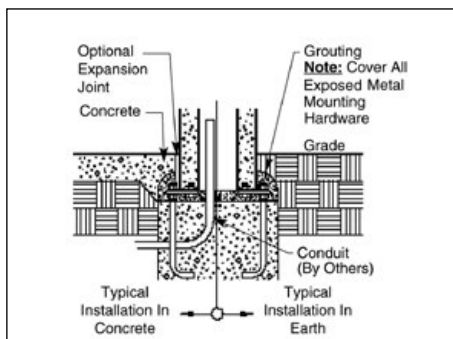
1. To protect finish, lay concrete bollard horizontally on wood blocks.



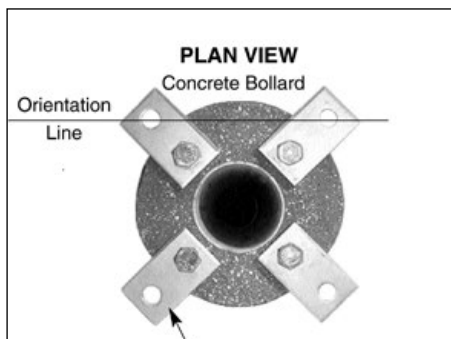
2. Install four anchor plates using 15/16" wrench with four 5/8-11 hex head bolts provided. Position the anchor plates straight from center on round bollards (see plan view below).



3. Route field wires through and out of top of bollard. Concrete bollards are heavy; use adequate means to lift bollard and set onto anchor bolts without dropping. Install flat washers and 1/2" nuts.



4. Make final adjustments to level bollard by turning the bottom nuts on the anchor bolts. The bollard must have full contact with concrete foundation by grouting. Mounting hardware must



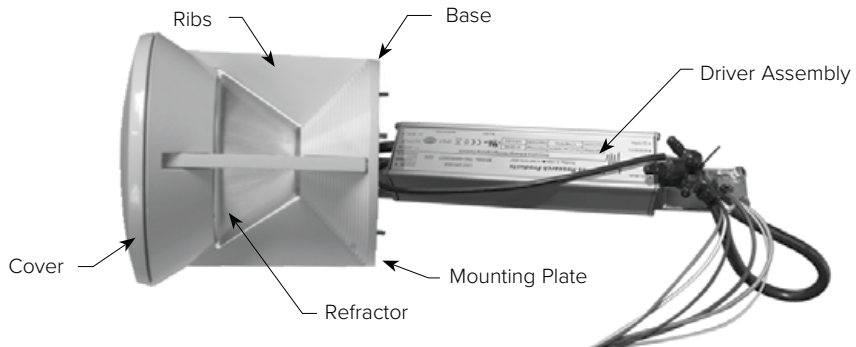
not be in contact with soil or other corrosive elements. If luminaire will not be installed on lit bollard, cover top of bollard so water and debris will not collect inside.

GEM1C® LED Performance Bollard - Concrete Shaft Installation Instructions

Driver / Fixture Installation Instructions:

! Make certain electrical supply is **OFF** before starting installation.

1. Remove cover from top using 3/16" hex wrench.



2. Loosen and remove (4) 1/4" nuts using 7/16" wrench.



3. Remove ribs.



4. Unplug quick-disconnects.



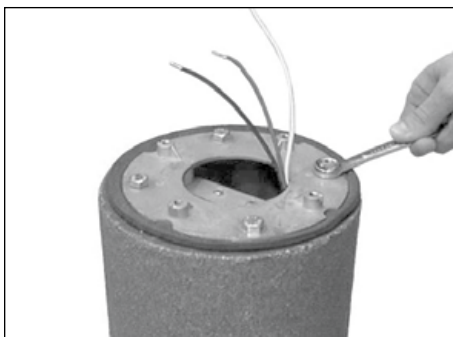
5. Remove top and refractor glass.



6. Loosen and remove (4) 1/4" socket cap screws using 3/16" hex wrench to separate base from mounting plate.



7. Place gasket on top of concrete shaft. Make connections between mounting plate/driver assembly and field wires, i.e. green-to-ground, white-to-common and black to voltage.



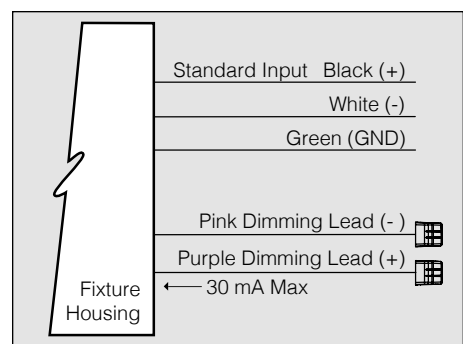
8. Insert mounting plate/driver assembly into concrete shaft. Center and align gasket and mounting plate on screw holes in concrete shaft. Tighten (4) 3/8" hex screws using a 9/16" wrench.



9. Connect two 1-pin quick-disconnects from driver assembly to quick-disconnects on base. Align base on mounting plate bosses, insert (4) 1/4" socket cap screws and tighten using 3/16" hex wrench.



10. Re-assemble refractor, ribs, top, and cover in reverse order to finish installation.



0-10V DIMMING

0-10V Dimming: Driver has a 0-10V dimming interface with a dimming range of 10-100%. The driver is compatible with most controls systems including NX Lighting Controls. Note: Not compatible with current sourcing dimmers. Controls compatible via purple and pink dimming leads.

BATTERY BACKUP

If your fixture includes Battery Backup Option, an additional power wire ia included labeled “Unswitched Power”. This lead must be connected to an unswitched power source running 120-277 VAC to function properly.

For warranty see: currentlighting.com/kimlighting

EC 140731001

Status A

Part No. 93054338