

# Lighting Controls

## Wall Station Custom Text Order Form LVSD

Project Name \_\_\_\_\_ PO# \_\_\_\_\_

Contact Name \_\_\_\_\_ Company Name \_\_\_\_\_

Contact Phone Number \_\_\_\_\_ Shipping Address \_\_\_\_\_

City \_\_\_\_\_ State \_\_\_\_\_ Zip Code \_\_\_\_\_

### NOTES

- Custom Text (-CT) is an option to allow customers to create unique text to apply on a button cap based on unique and personalized requirements
- CT option is based on custom text not currently available from our preset list
- CT options are unique and will require longer lead times
- 8 Character limit. Text requests over 8 characters will be required to be abbreviated  
Spaces count towards a character.
- Text will be 5pt., Arial Narrow, all caps
- Light pipes are always on the left
- Red and Black caps will be provided with white text.
- White, Light Almond, Gray and Ivory caps will be provided with black text.
- Special characters may be used, however will require additional internal efforts to define to the factory. (See special notes field on the bottom of this page.)
- Pilot light functionality is not supported with Off or Raise/Lower type buttons.



1-4 Button w/ Light Pipe

### HOW TO ORDER

1. Complete this Custom Text form including your purchase order number and contact information.
2. Each -CT, custom button cap request requires a completed Custom Text Order Form. Text will be printed exactly as written, so please write in all capital letters.
3. Submit a PO and the form on Oasis. For questions about your order, please contact your Customer Service Rep.

**\*Order forms provided to customer service must be in the original editable PDF format. They may NOT be scanned, handwritten, faxed, or photocopied.**

### Ordering part numbers (LVSD)

CATALOG #

**EXAMPLE:** BTA-V-L-N-GY-CT-CURRENT

Model	-	Device	-	Size	-	Light Pipe	-	Color	-	Custom Text
BTA		D		L						CT

#### \*Notes:

- LVSD wall station only come in 1-4 cap size (L)
- Light Pipe text starts at the light pipe and progresses right
- Non-light pipe text is centered on the button cap

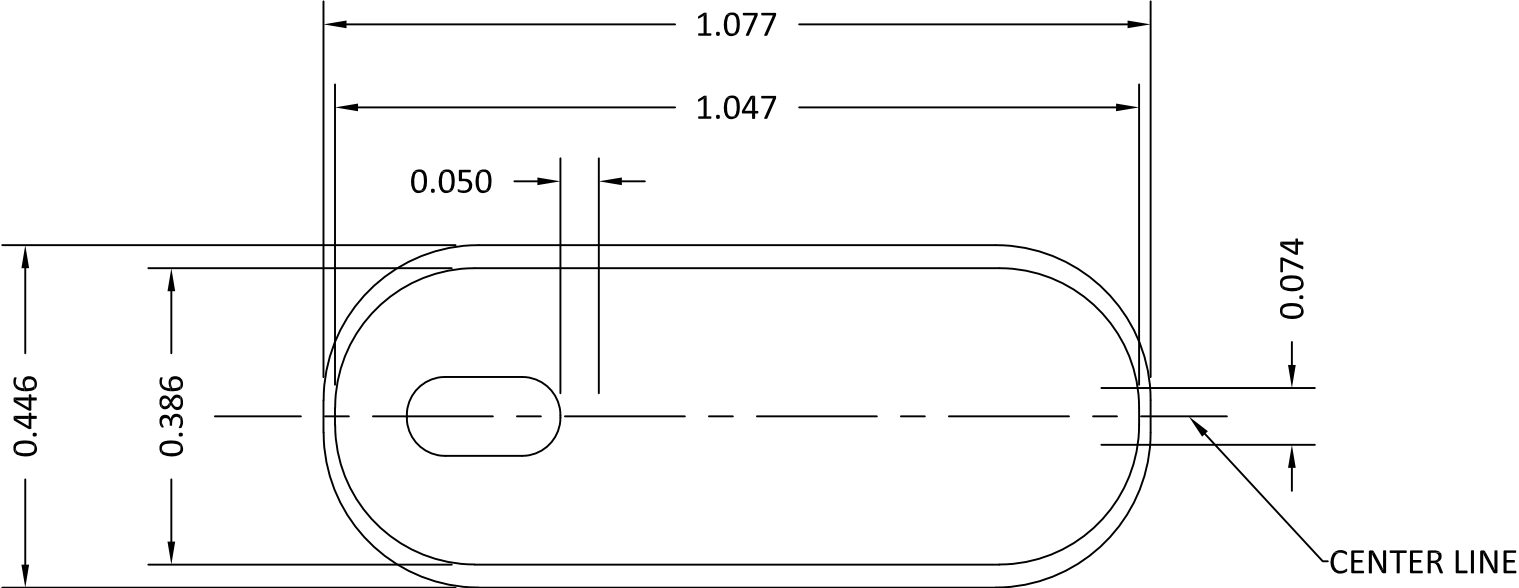
**\*All custom text (CT) must be written in all caps**

### CUSTOMER NOTES:

**CUSTOMER APPROVAL:** I hereby agree that the spelling, capitalization and arrangement of the text shown on the attached Custom Text order is correct and release for manufacturing without further review.

Signature \_\_\_\_\_ Date \_\_\_\_\_

BTA-D-L-P-(x)-CT-



\* (x) INDICATES THE WALL STATION DEVICE NAME

*PRINTED PART NO.	BUTTON PART NO.	BUTTON COLOR	IMAGE COLOR
BTA-(x)-L-P-WH-	30-00740-01	WHITE	BLACK
BTA-(x)-L-P-GY-	30-00740-03	GRAY	BLACK
BTA-(x)-L-P-LA-	30-00740-04	LIGHT ALMOND	BLACK
BTA-(x)-L-P-BK-	30-00740-05	BLACK	WHITE
BTA-(x)-L-P-IV-	30-00740-07	IVORY	BLACK
BTA-(x)-L-P-RD-	30-00740-10	RED	WHITE

NOTES:

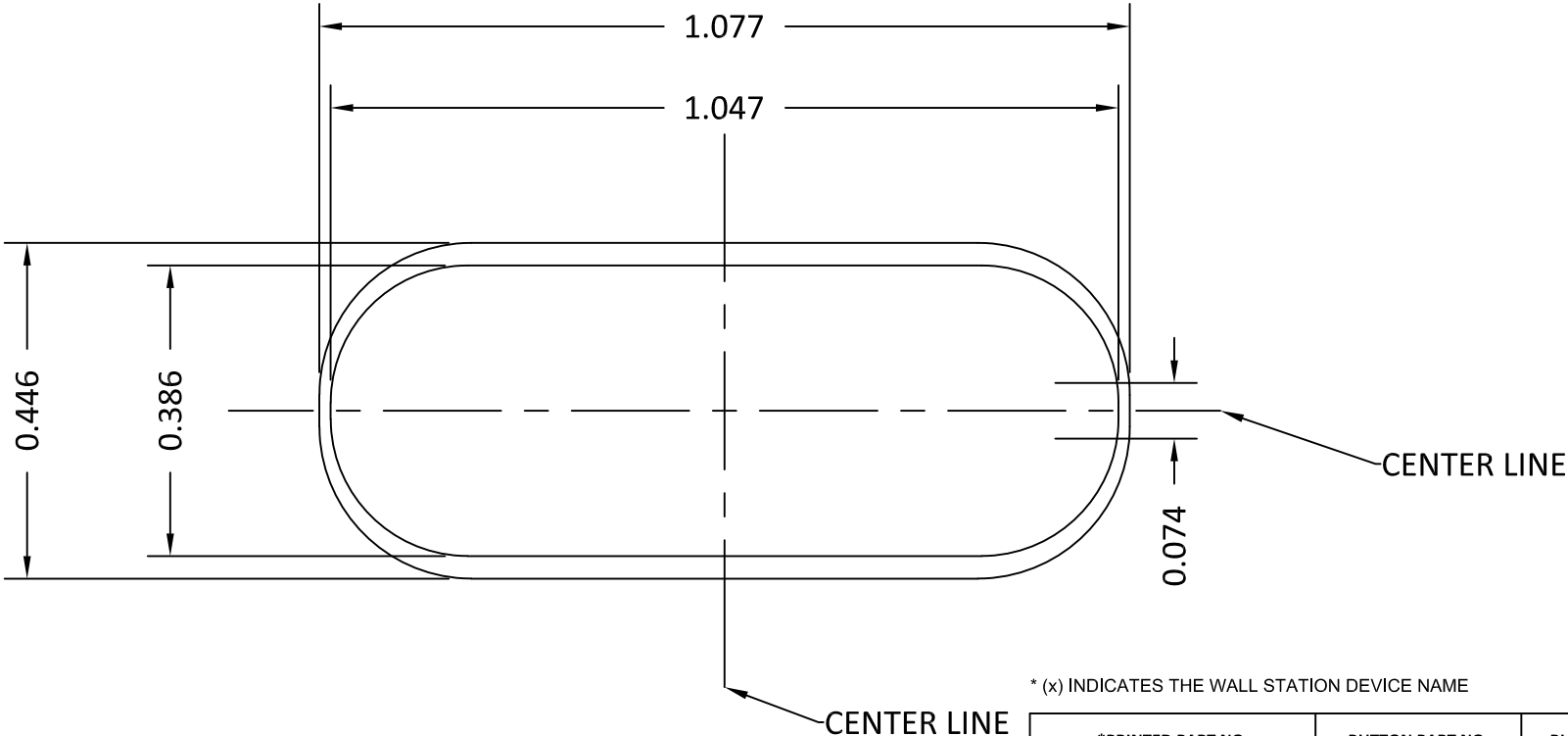
- 1. HLI SOLUTIONS, INC. TO PROVIDE IMAGE SOFTWARE FILE (\*.ai OR \*.EPS).
- 2. POSITION IMAGE ON BUTTON AS SHOWN -CENTERED TEXT SHOWN AS REF.
- 3. IMAGE TO BE FREE OF SMEARS, SMUDGES AND FOREIGN MATERIALS.

HLI SOLUTIONS, INC

TITLE  
BUTTON LABELED W/LIGHTPIPE

SIZE A	DWG NO 30-00740-xx_	REV A
-----------	------------------------	----------

BTA-D-L-N-(x)-CT-



\* (x) INDICATES THE WALL STATION DEVICE NAME

*PRINTED PART NO.	BUTTON PART NO.	BUTTON COLOR	IMAGE COLOR
BTA-(x)-L-N-WH-	30-00738-01	WHITE	BLACK
BTA-(x)-L-N-GY-	30-00738-03	GRAY	BLACK
BTA-(x)-L-N-LA-	30-00738-04	LIGHT ALMOND	BLACK
BTA-(x)-L-N-BK-	30-00738-05	BLACK	WHITE
BTA-(x)-L-N-IV-	30-00738-07	IVORY	BLACK
BTA-(x)-L-N-RD-	30-00738-10	RED	WHITE

NOTES:

- 1. HLI SOLUTIONS, INC. TO PROVIDE IMAGE SOFTWARE FILE (\*.ai OR \*.EPS).
- 2. POSITION IMAGE ON BUTTON AS SHOWN -CENTERED TEXT SHOWN AS REF.
- 3. IMAGE TO BE FREE OF SMEARS, SMUDGES AND FOREIGN MATERIALS.

HLI SOLUTIONS, INC

TITLE  
BUTTON LABELED

SIZE A	DWG NO 30-00738-xx_	REV A
-----------	------------------------	----------