

# Lighting Controls

## Wall Station Custom Text Order Form NX

Project Name \_\_\_\_\_ PO# \_\_\_\_\_

Contact Name \_\_\_\_\_ Company Name \_\_\_\_\_

Contact Phone Number \_\_\_\_\_ Shipping Address \_\_\_\_\_

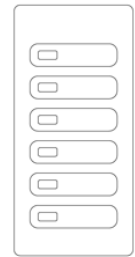
City \_\_\_\_\_ State \_\_\_\_\_ Zip Code \_\_\_\_\_

### NOTES

- Custom Text (-CT) is an option to allow customers to create unique text to apply on a button cap based on unique and personalized requirements
- CT option is based on custom text not currently available from our preset list
- CT options are unique and will require longer lead times
- 8 Character limit. Text requests over 8 characters will be required to be abbreviated  
Spaces count towards a character.
- Text will be 5pt., Arial Narrow, all caps • Light pipes are always on the left
- Red and Black caps will be provided with white text.
- White, Light Almond, Gray and Ivory caps will be provided with black text.
- Special characters may be used, however will require additional internal efforts to define to the factory. (See special notes field on the bottom of this page.)
- Pilot light functionality is not supported with Off or Raise/Lower type buttons.



1-4 Button w/ no Light Pipe



6 Button w/ no Light Pipe

### HOW TO ORDER

1. Complete this Custom Text form including your purchase order number and contact information.
2. Each -CT, custom button cap request requires a completed Custom Text Order Form. Text will be printed exactly as written, so please write in all capital letters.
3. Submit a PO and the form on Oasis. For questions about your order, please contact your Customer Service Rep.

**\*Order forms provided to customer service must be in the original editable PDF format. They may NOT be scanned, handwritten, faxed, or photocopied.**

### Ordering part numbers (NX)

CATALOG #



**EXAMPLE:** BTA-V-L-N-GY-CT-CURRENT

\*Notes:

- Light Pipe text starts at the light pipe and progresses right
- Non-light pipe text is centered on the button cap

**\*All custom text (CT) must be written in all caps**

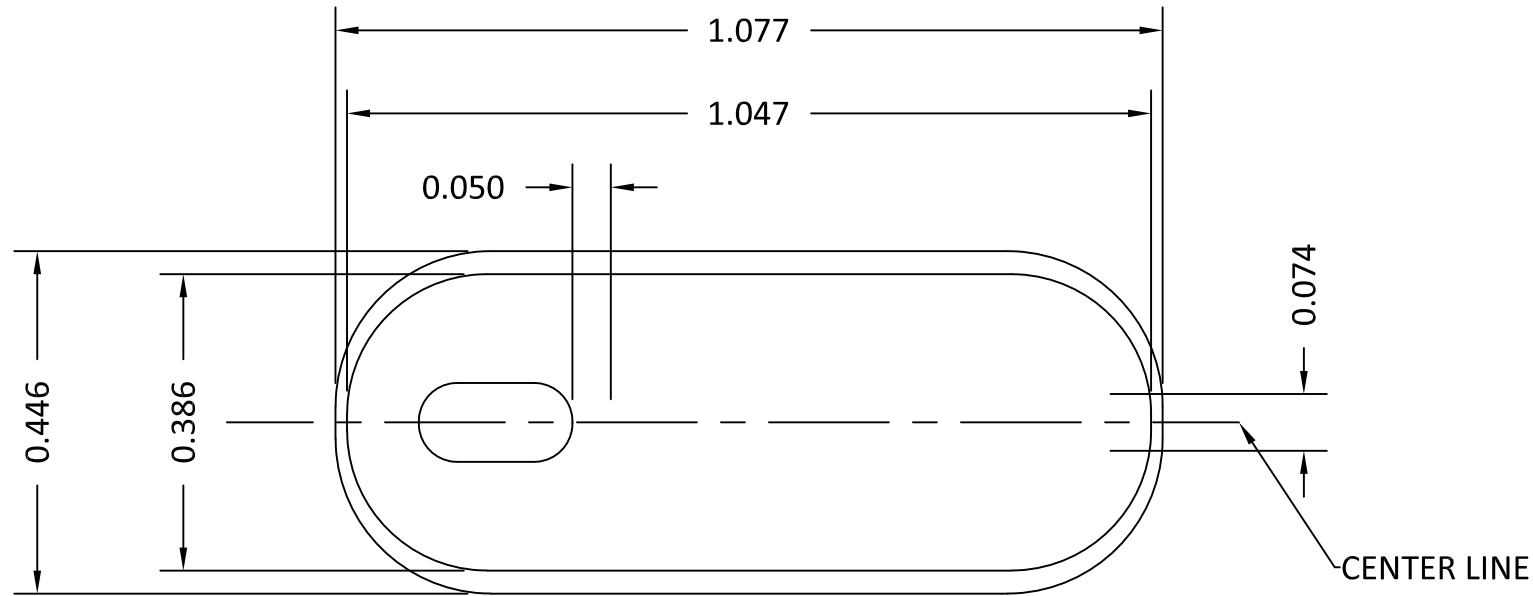
### CUSTOMER NOTES:

**CUSTOMER APPROVAL:** I hereby agree that the spelling, capitalization and arrangement of the text shown on the attached Custom Text order is correct and release for manufacturing without further review.

Signature \_\_\_\_\_ Date \_\_\_\_\_

# BTD-N-L-P-(x)-CT-

\*All Custom Text (CT) must be written in **all caps**



\* (x) INDICATES THE WALL STATION DEVICE NAME

*PRINTED PART NO.	BUTTON PART NO.	BUTTON COLOR	IMAGE COLOR
BTD-(x)-L-P-WH-	30-00583-01	WHITE	BLACK
BTD-(x)-L-P-GY-	30-00583-03	GRAY	BLACK
BTD-(x)-L-P-LA-	30-00583-04	LIGHT ALMOND	BLACK
BTD-(x)-L-P-BK-	30-00583-05	BLACK	WHITE
BTD-(x)-L-P-IV-	30-00583-07	IVORY	BLACK
BTD-(x)-L-P-RD-	30-00583-10	RED	WHITE

## NOTES:

1. HLI SOLUTIONS, INC. TO PROVIDE IMAGE SOFTWARE FILE (\*.ai OR \*.EPS).
2. POSITION IMAGE ON BUTTON AS SHOWN -CENTERED TEXT SHOWN AS REF.
3. IMAGE TO BE FREE OF SMEARS, SMUDGES AND FOREIGN MATERIALS.

**HLI SOLUTIONS, INC**

TITLE

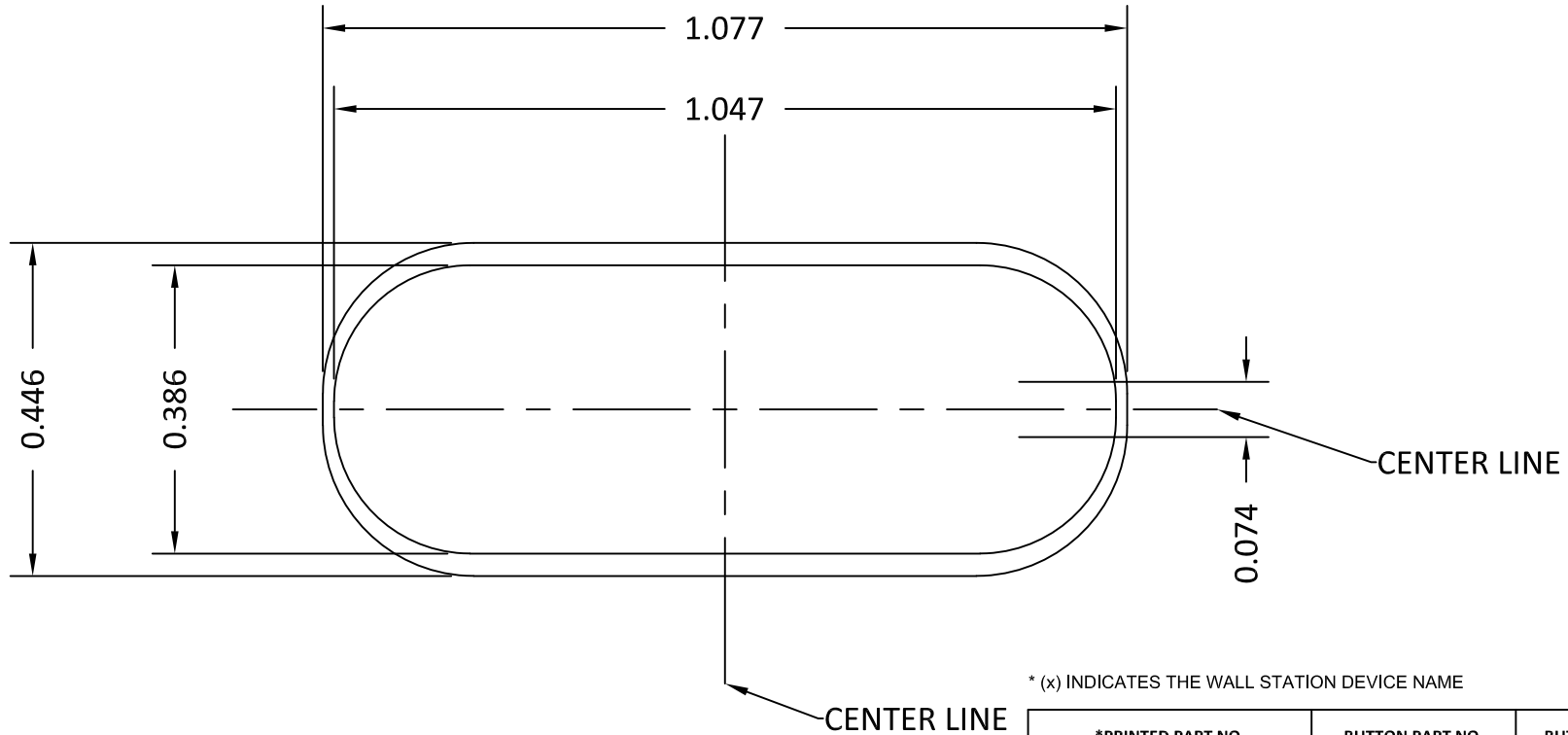
**BUTTON LABELED W/LIGHTPIPE**

SIZE A	DWG NO 30-00583-xx_	REV A
-----------	------------------------	----------

SCALE: | WEIGHT: | SHEET 1 OF 1

# BTD-N-L-N-(x)-CT-

\*All Custom Text (CT) must be written in **all caps**



\* (x) INDICATES THE WALL STATION DEVICE NAME

*PRINTED PART NO.	BUTTON PART NO.	BUTTON COLOR	IMAGE COLOR
BTD-(x)-L-N-WH-	30-00419-01	WHITE	BLACK
BTD-(x)-L-N-GY-	30-00419-03	GRAY	BLACK
BTD-(x)-L-N-LA-	30-00419-04	LIGHT ALMOND	BLACK
BTD-(x)-L-N-BK-	30-00419-05	BLACK	WHITE
BTD-(x)-L-N-IV-	30-00419-07	IVORY	BLACK
BTD-(x)-L-N-RD-	30-00419-10	RED	WHITE

## NOTES:

1. HLI SOLUTIONS, INC. TO PROVIDE IMAGE SOFTWARE FILE (\*.ai OR \*.EPS).
2. POSITION IMAGE ON BUTTON AS SHOWN -CENTERED TEXT SHOWN AS REF.
3. IMAGE TO BE FREE OF SMEARS, SMUDGES AND FOREIGN MATERIALS.

**HLI SOLUTIONS, INC**

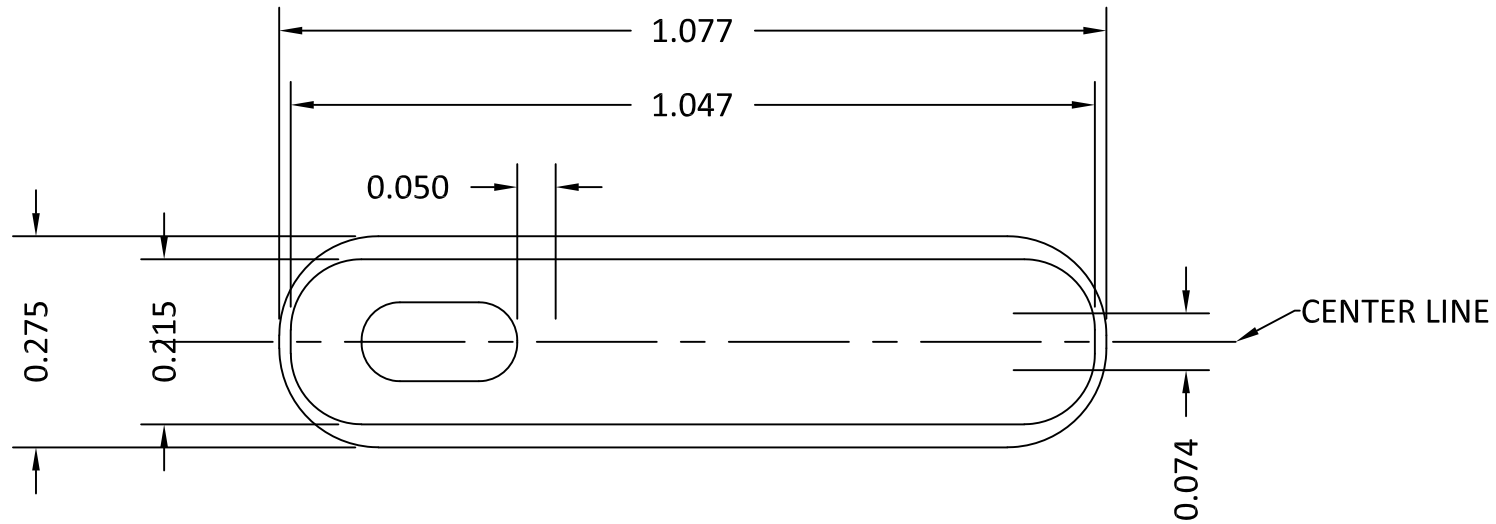
TITLE

**BUTTON LABELED**

SIZE A	DWG NO 30-00419-xx_	REV A
-----------	------------------------	----------

# BTD-N-S-P-(x)-CT-

\*All Custom Text (CT) must be written in **all caps**



\* (x) INDICATES THE WALL STATION DEVICE NAME

*PRINTED PART NO.	BUTTON PART NO.	BUTTON COLOR	IMAGE COLOR
BTD-(x)-S-P-WH-	30-00582-01	WHITE	BLACK
BTD-(x)-S-P-GY-	30-00582-03	GRAY	BLACK
BTD-(x)-S-P-LA-	30-00582-04	LIGHT ALMOND	BLACK
BTD-(x)-S-P-BK-	30-00582-05	BLACK	WHITE
BTD-(x)-S-P-IV-	30-00582-07	IVORY	BLACK
BTD-(x)-S-P-RD-	30-00582-10	RED	WHITE

## NOTES:

1. HLI SOLUTIONS, INC. TO PROVIDE IMAGE SOFTWARE FILE (\*.ai OR \*.EPS).
2. POSITION IMAGE ON BUTTON AS SHOWN -CENTERED TEXT SHOWN AS REF.
3. IMAGE TO BE FREE OF SMEARS, SMUDGES AND FOREIGN MATERIALS.

**HLI SOLUTIONS, INC**

TITLE

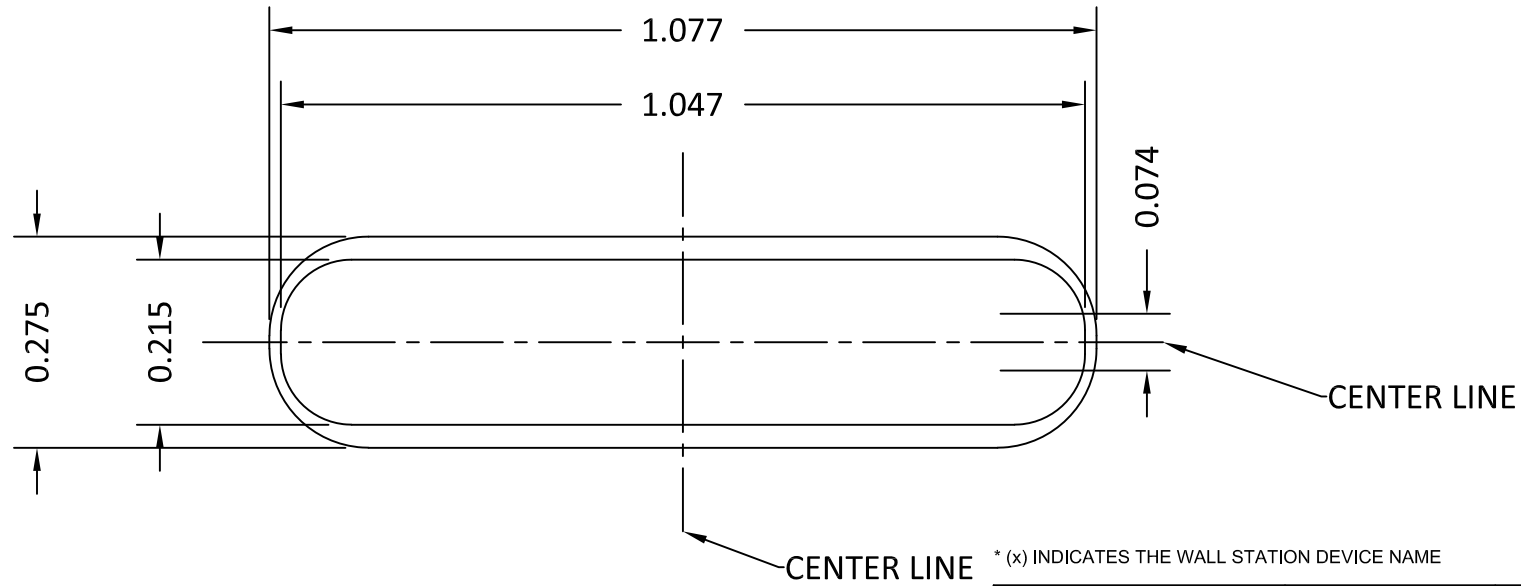
BUTTON LABELED W/LIGHTPIPE

SIZE A	DWG NO 30-00582-xx_	REV A
-----------	------------------------	----------

SCALE: | WEIGHT: | SHEET 1 OF 1

# BTD-N-S-N-(x)-CT-

\*All Custom Text (CT) must be written in **all caps**



\* (x) INDICATES THE WALL STATION DEVICE NAME

*PRINTED PART NO.	BUTTON PART NO.	BUTTON COLOR	IMAGE COLOR
BTD-(x)-S-N-WH-	30-00388-01	WHITE	BLACK
BTD-(x)-S-N-GY-	30-00388-03	GRAY	BLACK
BTD-(x)-S-N-LA-	30-00388-04	LIGHT ALMOND	BLACK
BTD-(x)-S-N-BK-	30-00388-05	BLACK	WHITE
BTD-(x)-S-N-IV-	30-00388-07	IVORY	BLACK
BTD-(x)-S-N-RD-	30-00388-10	RED	WHITE

## NOTES:

1. HLI SOLUTIONS, INC. TO PROVIDE IMAGE SOFTWARE FILE (\*.ai OR \*.EPS).
2. POSITION IMAGE ON BUTTON AS SHOWN -CENTERED TEXT SHOWN AS REF.
3. IMAGE TO BE FREE OF SMEARS, SMUDGES AND FOREIGN MATERIALS.

**HLI SOLUTIONS, INC**

TITLE  
BUTTON LABELED

SIZE A	DWG NO 30-00388-xx_	REV A
-----------	------------------------	----------

SCALE: | WEIGHT: | SHEET 1 OF 1