



Z STANDS
FOR
Zero

LZPT

ZERO PLENUM®
TROFFER / LED

LED Luminaire for Restricted Plenum Spaces

- Installs inside 1½" T-Bar grid with 3" plenum clearance
- Patented telescoping housing
- Sits completely within T-Bar
- Available in 1'x4', 2'x2' and 2'x4'

Columbia
LIGHTING

Current 

Ordering Information

YOUR ORDER

LZPT						LSR	
MODEL	SIZE	COLOR TEMP	LUMEN OUTPUT		CEILING TYPE	SHIELDING	REFLECTOR
LZPT Zero Plenum® LED Troffer	14 1' × 4'	30 3000K	XW Extra Low Watt	ML Medium Lumen	G Grid	LSR Linear Prismatic Lens with Surface Relief Diffuser	S Smooth Curve ²
	22 2' × 2'	35 3500K	VW Very Low Watt	HL High Lumen	SM Surface Mount ¹		O Open ³
	24 2' × 4'	40 4000K	MW Medium Low Watt	VL Very High Lumen			
		50 5000K	LW Low Watt	XL Extra High Lumen			

See Product Availability Table below.

DRIVER	VOLTAGE	OPTIONS
E Fixed Output	U 120V-277V	GLR Fast Blow Fuse
ESD Step Dimming ^{4,5,7}	347 347V	GMF Slow Blow Fuse
ED 0-10V Dimming		4TB (4) Bulk T-bar Clips
ED1 0-10V 1% Dimming		C38890 3-Wire Flex, 90° Connector
LUTH Hi-lume 1% EcoSystem LED driver with Soft-on, Fade-to-Black dimming technology ^{4,5}		C48890 4-Wire Flex, 90° Connector
		C58890 5-Wire Flex, 90° Connector
		ELL14 Emergency Battery Pack Installed, 1400 Lumens ^{4,6}
		CP Chicago Plenum

ACCESSORIES (ORDER SEPARATELY)	
ZPTSMK24	LZPT Surface Mounting Kit (2'x4')
FK24	2' × 4' Flange Kit
ZPT4 9/16 G	Grid Filler Kit (for use in 9/16" wide tee ceilings)

¹LZPT may be ordered as a factory assembled surface mounted unit or ordered as a grid "G" ceiling type and surface mounted in the field using the ZPTSMK surface mounting kit. Not suitable for continuous row mounting.

²2'x2' and 2'x4' only

³1'x4' only

⁴N/A on HL, VL, and XL lumen packages

⁵Not available in 347V

⁶Available on 2'x2' with remote kit, see 2'x2' spec sheet for details.

⁷Only available in HL lumen package

For questions about configuration options, contact representative.

PRODUCT AVAILABILITY

SIZE	LUMEN PACKAGE	NOMINAL LUMENS	NOMINAL WATTS	LPW	SIZE	LUMEN PACKAGE	NOMINAL LUMENS	NOMINAL WATTS	LPW	SIZE	LUMEN PACKAGE	NOMINAL LUMENS	NOMINAL WATTS	LPW
14	XW	2600-2800	26	100-108	22	VW	1900-2050	18	106-114	24	XW	2600-2800	25	100-108
	VW	3300-3600	33	100-109		MW	2300-2500	21	110-119		VW	3300-3600	33	100-109
	MW	3900-4250	38	103-112		LW	2600-2800	26	100-108		MW	3900-4250	38	103-112
	LW	4350-4700	43	101-109		ML	3200-3500	31	103-113		LW	4350-4700	43	101-109
	ML	4900-5300	48	102-110		HL	3600-3900	35	103-111		ML	4900-5300	48	102-110
	HL	5500-6000	57	97-105		VL	4300-4700	43	100-109		HL	5500-6000	57	97-105
	VL	7200-7850	77	94-102							VL	7200-7850	77	94-102
	XL	8400-9100	92	91-99							XL	8400-9100	92	91-99

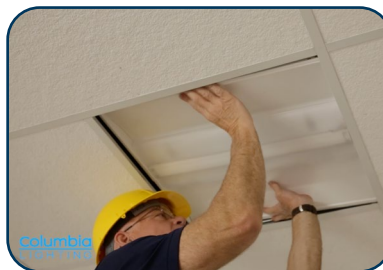
Nominal lumen range represents 3000K through 5000K. Lumens vary according to color temperatures and other factors. See specific photometric test(s).

3-Step Installation



STEP 1

Slip one end of the LZPT fixture over the top of the tee. Raise the other end of the fixture into the plenum just above the bottom of the tee. Slide the fixture back into place, resting it on the inside surface of the tees.



STEP 2

The LZPT fixture is shipped with the telescoping housing in its compressed state. When installed as directed in Step 1, the fixture is less than 23" wide (less than 11" for 1x4) allowing it to slide between the tees. Note that there is a temporary gap along the side of the fixture while it's still in its compressed state.



STEP 3

Apply pressure on each side of the fixture expanding it to its full 24" width (12" for 1x4). Once expanded, the LZPT housing locks into position and can only be compressed again by pushing on the locking tab with a screwdriver or similar tool.