

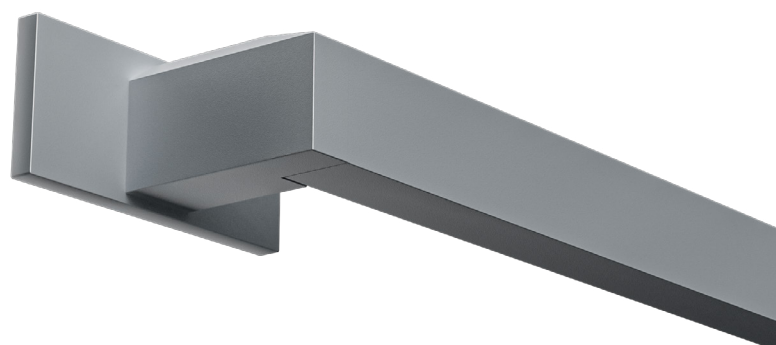
AIRA

Wall & Wall Sconce



AIRA-SW-SD-LPA-4-4-SOF-WHS-RWHS-35K9-SD050-D01-1C-UNV

- 1 Refined aesthetic that matches Aira's open center design language and color palette while being ADA compliant
- 2 Semi-Direct (25/75) distribution with extra wide direct and low peak indirect for wall grazing (Wall) or task illumination (Wall Sconce) applications
- 3 Integral driver, battery and control options for ease of contractor installation
- 4 Complimentary luminous, corner connectors (L) allow the seamless transition around inside and outside corner applications
- 5 Cross bar inserts (Wall) and end caps (Wall Sconce) are finished to specification to complement the palette of your space



Black



Gray



Graphite



Grasshopper



Copper



Pink

Wall & Wall Sconce

Low profile linear wall products that are ADA compliant and offer on board technology and exceptional photometric performance.



AIRA-SW-SD-LPA-30-8-SOF-WHS-RWHS-40K9-SD075-D01-1C-UNV-1C900C

Finish: White, Gray, Black (standard)

Crossbar Insert & End Cap Finish: White, Gray, Black, Graphite, Pink Panache, Grasshopper, Copper, Custom

Color Temp: 3000K, 3500K, 4000K & 5000K

CRI: Trigain® 90CRI

Distribution: Semi-Direct (25/75)

Fixture Lengths: 2', 3', 4', 6', 8'

Lumen Output (Wall): 150–1,500 Lm/Ft

Lumen Output (Wall Sconce): 150–1,000 Lm/Ft

Efficacy: Up to 118 LPW

Sensors: NX enabled with Accessory Kit

Voltage: Universal 120–277V, 347V

Ratings: ADA Compliant



Want to learn more?

Scan the QR code to learn more about Aira.