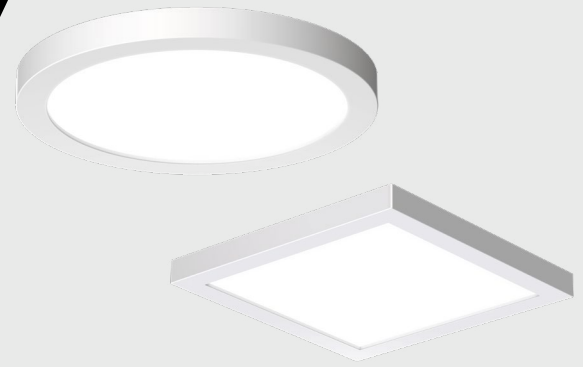


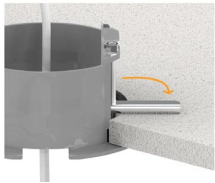
Flex Edgelit

Surface Mount Downlight



③ "Snap" Install

Easy-to-use 3 1/2" sleeve can accommodate ceiling thickness up to 1" and can be directly installed to the ceiling space without the need for a housing.



④ Slim, Sleek and Stylish

1/2" profile in an all aluminum powder coat painted cast housing without any protrusions or exposed hardware



① Field Selectable CCT

Switchable CCT creating a versatile lighting solution to suit and adapt to different environments.

② Dimming Flexibility

Tri-Dimming technology that combines 0-10V, TRIAC and ELV dimming protocols into one, eliminating the need for multiple SKUs.

⑤ Consistency & Reliability

LED Edge-Lit technology paired with custom engineered optical grade polycarbonate lens delivering a soft, uniform and long lasting lighting.

Illuminate Your Space With Ease and Style

Lumination Flex Edgelit (LRXE) surface mount downlight provides superior, uniform and long lasting lighting with the latest edge-lit LED technology. With its slim and minimalist design that's perfectly suited for areas with low ceilings and tight spaces, the LRXE seamlessly integrates into any space, making it ideal for multifamily residential and high density commercial settings. Designed for ease of installation, the LRXE comes with a remote junction box, snap in clips and 3 1/2" sleeve that can be directly installed into any ceiling space without the need for a housing, offering a hasslefree, quick and easy installation.



Size: 4in, 6in, 8in

Form Factor: Square, Round

Finish: White Painted

Color Temp: Selectable: 2700K - 4000K

CRI: 90 + CRI, R9 > 50

Lumen Output: 750, 1150, 1800lm

Efficacy: Up to 106 LPW

Dimming: Tri-Dimming 0-10V (Dim to Off) & TRIAC/ELV (5%)

Voltage: 120/277V

Install: New Construction/Retrofit



WET RATED



Want to learn more?

For Specific product technical questions, contact: lightingproinfo@currentlighting.com