

# 17L-CW

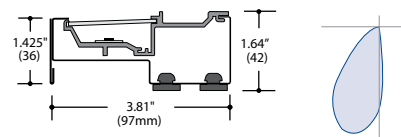
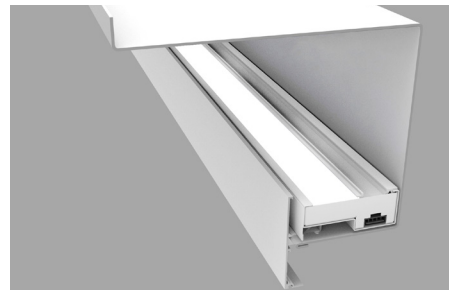
AXIOM® INDIRECT LIGHT COVES BY ARMSTRONG

Fixture Type:  
Project Name:

|            |           |
|------------|-----------|
| DATE:      | LOCATION: |
| TYPE:      | PROJECT:  |
| CATALOG #: |           |

## Ordering Guide

| Feature   | Code | Options                         | Description   |
|---|------|---------------------------------|---|
| <b>Series</b>   |      | 17L                             | Cove-17   |
| <b>Mounting</b>   |      | CW                              | Armstrong Axiom Cove Wall   |
| <b>Fixture distribution</b>                                     |      | AI                              | Asymmetric Indirect   |
| <b>Row length (in feet)</b>                                     |      | ____'                           | Enter in foot increments.<br>Note fixture lengths below.  |
| <b>Max length in row</b>  |      | 02<br>03<br>04                  | 24-1/16" 610mm<br>36", 914mm<br>48", 1219mm   |
| <b>Finish/Color</b>   |      | C1                              | Matte White   |
| <b>Color temperature</b>  |      | 30K<br>35K<br>40K               | 3000K<br>3500K<br>4000K   |
| <b>Output/ft</b><br>(specifiable in<br>50 lumens/ft increments) |      | I030<br>I100                    | 300 (min) see "Driver" section for limitations<br>1000 (max)  |
| <b>Driver</b>   |      | NDM<br>D01<br>DS1<br>D00<br>DS0 | Non Dimming<br>1% Dimming, 0-10V<br>Soft Start 1% Dimming<br>Dim-to-off<br>Soft-Start Dim-to-off (1%) |
| <b>Circuiting</b>   |      | 1C                              | 1 Circuit   |
| <b>Voltage</b>  |      | UNV<br>120<br>240               | Universal Voltage (120 or 277)<br>120 Volt<br>240 Volt  |
| <b>Thru-wiring</b>  |      | W1<br>W3                        | No Thru Wire<br>Provide Normal Thru Wiring Only   |
| Optional Features   | Code | Options                         | Description   |
| <b>Nightlight</b>   |      | _NL                             | Nightlight Circuit Required. Enter quantity.<br>2NL = 2 nightlight circuits/row                       |



## Key Features

- Variable Intensity technology provides a range of specifiable outputs and resulting fixture wattages
- Asymmetric distribution
- Specifically designed to work with Armstrong Axiom Indirect Light Coves

## Performance

| Output | Lumens/ft | W/ft | Efficacy<br>(Fixture Only) | Efficacy<br>(Installed) |
|--------|-----------|------|----------------------------|-------------------------|
| I030   | 300       | 2.7  | 113                        | 22.1                    |
| I035   | 350       | 3.1  | 113                        | 24.9                    |
| I040   | 400       | 3.4  | 119                        | 26.4                    |
| I045   | 450       | 3.7  | 121                        | 27.4                    |
| I050   | 500       | 4.2  | 120                        | 28.3                    |
| I055   | 550       | 4.5  | 122                        | 28.7                    |
| I060   | 600       | 4.9  | 123                        | 29                      |
| I065   | 650       | 5.2  | 125                        | 29.2                    |
| I070   | 700       | 5.8  | 122                        | 29.2                    |
| I075   | 750       | 6.2  | 121                        | 29.2                    |
| I080   | 800       | 6.6  | 121                        | 29.1                    |
| I085   | 850       | 7.0  | 122                        | 28.9                    |
| I090   | 900       | 7.3  | 124                        | 31.8                    |
| I095   | 950       | 7.8  | 123                        | 31                      |
| I100   | 1000      | 8.3  | 121                        | 30.4                    |

(wattage may vary up to 5% from published)



# 17L-CW

AXIOM® INDIRECT LIGHT COVES BY ARMSTRONG

## Details

### Construction:

Steel housing. Aluminum LED module snaps into housing.

### Mounting:

Install in cove (provided by others). Interior cove dimensions should allow for a 4.5" x 1.5" cross-section. For maximum efficiency, wall and ceiling above cove should have matte surfaces with high reflectances.

### Distribution

Cove Ceiling (CC-AI)-Fixture lumens reflected indirectly off ceiling.  
Cove Wall (CW-AI)-Fixture lumens reflected indirectly off wall.

### Fixture length:

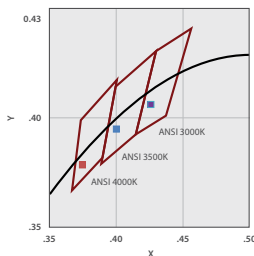
02 (24-1/16" 610mm)  
03 (36", 914mm)  
04 (48", 1219mm)

### Finish/Color:

Housing can be painted in C1 Matte White only. LED module is white.

### CCT:

30K-3000K output multiplier 0.975  
35K-3500K output multiplier 1.0  
40K-4000K output multiplier 1.05



### Color Variation:

2 step MacAdam ellipse

### Output (VI technology):

Variable Intensity (VI) technology allows precise specification of fixture output/wattage. Fixture will be programmed and labeled to specification. See output section for available increments.

### Output:

Specify in 50 lumens increments/ft within the below range:

|      | Lumens/ft | Nomenclature |
|------|-----------|--------------|
| Min: | 300       | I030         |
| Max: | 1000      | I100         |

### Driver:

NDM: Non-dimming. Fixture will be wired for fixed light output.  
D01: 100%-1% dimming range. Fixture will be wired for low voltage 0-10V dimming control.  
DS1: Soft-Start 100%-1% dimming range. Fixture will be wired for low voltage 0-10V dimming control.  
D00: Dim-to-off 100%-1% Dimming range. Fixture will be wired for low voltage 0-10V dimming control.  
DS0: Soft-Start Dim-to-off 100%-1% dimming range. Fixture will be wired for low voltage 0-10V dimming control.

### Circuiting:

1C (1 Circuit) Fixture wired for a single circuit.

|            |           |
|------------|-----------|
| DATE:      | LOCATION: |
| TYPE:      | PROJECT:  |
| CATALOG #: |           |

### Nightlight:

See separate LC-Nightlight spec sheet for additional details.

### Emergency:

Integral-not available  
Inverter-compatible (by others)

### Thru wiring:

See separate LC-Thruwire spec sheet for additional details.

### Power feed:

Fixture intended to be wired with 3/8" flexible whip.

### Field accessibility:

LED boards and drivers can be accessed and removed from fixture, while installed.

### CRI:

80 minimum

| CCT | CRI | R1 | R2 | R3 | R4 | R5 | R6 | R7 | R8 | R9 | R10 | R11 | R12 | R13 | R14 |
|-----|-----|----|----|----|----|----|----|----|----|----|-----|-----|-----|-----|-----|
| 30K | 82  | 81 | 89 | 94 | 80 | 80 | 84 | 85 | 65 | 19 | 73  | 78  | 63  | 83  | 96  |
| 35K | 83  | 82 | 90 | 94 | 81 | 81 | 85 | 87 | 68 | 24 | 75  | 78  | 62  | 84  | 97  |
| 40K | 83  | 82 | 89 | 92 | 81 | 81 | 83 | 88 | 70 | 23 | 72  | 78  | 55  | 84  | 95  |

### Rated Life:

Tested in accordance with LM79-2008 & derived from EPA TM21 calculator  
L70: 160,000 (calculated per TM21 extrapolated curve)  
L70: >36,288 (reported per TM21/LM80 6x's limitation)  
L90: 50,000 (calculated per TM21 extrapolated curve)  
L90: >36,288 (reported per TM21/LM80 6x's limitation)

### Fixture weight:

2.5 lbs/ft.

### Ratings:

CSA listed for damp locations. IBEW. AF of L. This product qualifies as a "designated country construction material" per FAR 52.225-11 Buy American-Construction. Materials under Trade Agreements effective 8/14/2020.

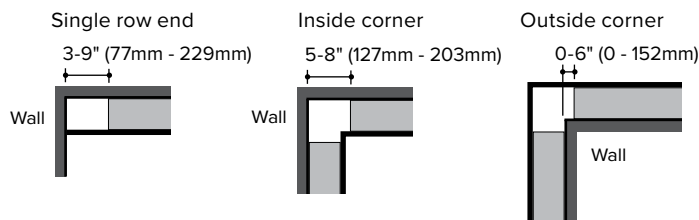


### Warranty:

LED boards-5 years  
LED drivers (standard)-5 years  
LED drivers (Lutron)-3 years

### Recommended fixture positioning:

*Positioning at Ends and Corners*  
*Standard Reflector*



# 17L-CW

AXIOM® INDIRECT LIGHT COVES BY ARMSTRONG

## Photometry

**Fixture:** 17L-CW-AI-02-C1-35K-I035  
CCT: 3500K  
Output: I035  
Nominal lumens: 350 lumens/ft  
\*Efficacy: 34.9 lm/W  
Test report: 15L-CC-AI-X-02-C1-35K-I030

