

# 2L-R-D

MOD™ 2 LED RECESSED DIRECT

DATE:	LOCATION:
TYPE:	PROJECT:
CATALOG #:	

## FEATURES

- Variable Intensity technology provides a range of specifiable outputs and resulting fixture wattages
- 2 SDCM color consistency
- End cap design eliminates visible diffuser seams/gaps
- TriGain® Technology provides superior color quality without compromising efficacy. The 2L-R-D series delivers 90 CRI at 112 LPW



## CONTROLS TECHNOLOGY



## SPECIFICATIONS

### CONSTRUCTION

- Housing constructed from die-formed and welded steel with wiring knockouts in top
- End caps constructed from die-formed steel. Installs from below via magnetic interface
- End caps overlap diffuser at each fixture end to climate gaps and LED visibility

### OPTICAL PERFORMANCE

- 2 SDCM color consistency, 90 CRI
- SOF: Soft diffuse acrylic lens
- BWO: White blade baffle with softglo lens overlay. Output multiplier (.70)
- ASYM: Asymmetric Highly transmissive diffuse acrylic lens with linear prisms
- BAT: "Batwing" distribution created from highly transmissive diffuse acrylic lens with linear prisms
- DRP: 1/2" protruding soft diffuse "drop" lens

### INSTALLATION

- PT Mounting: Continuous spackle trim with beaded edge welded to housing. Spackle trim allows plaster coat up to fixture edge for clean ceiling appearance
- LG/NG/SS Mounting: Side rails provide continuous mounting, lateral spacing between T-bars and allows clearance for T-bar supporting wire. For Tegular grid mount, fixture will sit level with the T-bar
- DW Mounting: Side rails allow installation into drywall slot. Visible flange is located on all 4 sides of fixture
- Illuminated corners available in 90°, 120°, 135°. One piece construction, ready to install, with diffusers that match adjoining fixtures. Corner system connectors must be used to form patterns. The length of each outside or inside illuminated corner is 12"

## SERVICE PROGRAM



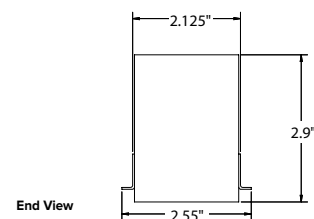
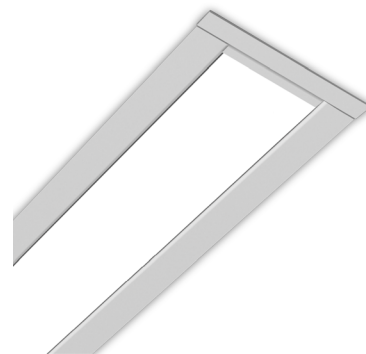
### ELECTRICAL

- Variable Intensity (VI) technology allows precise specification of fixture output/wattage. Fixture will be programmed and labeled to specification. Indirect and direct hemispheres can be independently specified
- LED boards and drivers can be accessed and removed from fixture, while installed
- Entire LED module can be removed and replaced
- 1C (1 Circuit) Fixture wired for a single circuit
- Emergency Battery: 10W battery powered driver. Provides a minimum of 90 minutes of emergency lighting. Inverter-Compatible. Provided by others. Available in: 6'- EF L or R: D030 through D100; 8'- EF Full: D030 through D055; 8'- EF L or R: D030 through D100. Available with SOF, ASYM, BAT downlight diffusers. Test switch located in lens. For rows where the battery fixture is in the middle of a row, the test switch will be located in that section
- Current's patented TriGain® phosphor delivers 90 CRI color quality at 80 CRI efficacy

### CONTROLS

- Sensors install between diffusers
- NX Lighting Controls provides options for standalone and networked integrated sensor with wired or wireless connectivity for NX system deployments
- SpectraSync™ Color Tuning Technology: Control your space based on the needs of the application, specific activities throughout the day and preferences of the occupants

MOD™X



	Weight
2L-R-D	3 lbs/ft

### CERTIFICATIONS

- CSA listed for damp location
- IC Rated
- IBEW
- AF of L
- UL924
- This product meets federal procurement law requirements under the Buy American Act (FAR 52.225-9) and Trade Agreements Act (FAR 52.225-11). See [Buy America\(n\) Solutions](#).
- Emergency Battery Backup options are California Energy Commission (CEC) Title 20 Compliant.

### WARRANTY

- LED boards - 5 years
- LED drivers (standard) - 5 years
- LED drivers (Lutron) - 3 years

KEY DATA	
Lumen Range Per Foot	D: 300–1000
Wattage Range Per Foot	2.8–9.1
Efficacy Range (LPW)	108–112
Rated Life (Hours)	L90:>60,000

ORDERING GUIDE

Example: 2L-DW-D-8-.3-08-SOF-C1-27K9-D030-D01-1C-UNV

CATALOG #

2L						
Series	Ceiling Type <sup>1</sup>	Fixture Distribution	Row Length (In Feet)	Row Length Adder	Max Length in Row	Direct Optical Distribution
2L MOD	DW Drywall	D Direct	— <sup>4</sup> Enter in foot increments	.3 Row length +3"	02 2', 609 mm	SOF Soft Diffuse Lens, Lambertian
	PT Drywall with plaster trim (trimless finish)	AD Asymmetric Direct		.6 Row length +6"	03 3', 914 mm	BWO Blade Baffle with Overlay <sup>2</sup>
	LG 15/16 Grid			.9 Row length +9"	04 4', 1219 mm	ASYM Asymmetric Diffuse Lens <sup>2,3</sup>
	NG 9/16 Grid			Measured in inches	05 5', 1524 mm	BAT Batwing Lens
	SS 9/16 Screw Slot				06 6', 1829 mm	DRP Drop Lens <sup>2,4</sup>
					08 8', 2438 mm	

Finish/Color <sup>5</sup>	Color Temperature	Direct Output/ft <sup>7</sup>	Driver	Circuiting	Voltage
C1 Matte White (Default)	27K9 2700K, 90 CRI <sup>4</sup>	D030 300 (min)	D01 1% Dimming, 0–10V	1C 1 Circuit	UNV Universal Voltage (120V through 277V)
C2 Textured Matte White	30K9 3000K, 90 CRI	to	D00 1% Dim-to-Off, 0–10V		347 347 Volt <sup>4,9</sup>
C3 Light Silver	35K9 3500K, 90 CRI	D100 1000 (max)	D05 SpectraSync 5% Dimming, 0–10V <sup>8</sup>		
C4 Machined Aluminum	40K9 4000K, 90 CRI		DS1 1% Dimming w/ Soft Start, 0–10V		
C5 Carbon Black	50K9 5000K, 90 CRI <sup>4</sup>		DS0 1% Dim-to-Off w/ Soft Start, 0–10V		
C6 Textured Camera Black	2230TD 2200K–3000K SpectraSync™ Dim-to-Warm <sup>4,6</sup>		LEC Hi-Lume 1% Ecosystem LED Driver <sup>4</sup>		
CC Custom Color	2765T 2700K–6500K SpectraSync™ Tunable White <sup>4,6</sup>		DALI DALI <sup>4</sup>		
			DALIP Powered by DALI (2.0) <sup>4</sup>		
			NDM Non-Dimming		

OPTIONAL

Nightlight	Emergency	Thru-wiring	Patterns⁴, 12	Chicago Environmental Air Modification
NL Nightlight Circuit Required. Enter quantity. 2NL = 2 nightlight circuits/row	EF 10W Emergency Battery Pack. Enter quantity. 2EF = 2 emergency batteries/row. (CEC Title 20 Compliant)¹⁰	W1 No Thru Wire W2 Provide Normal and Emergency/ Nightlight Thru Wiring¹¹ W3 Provide Normal Thru Wiring Only	C90L Illuminated 90° Corner C120L Illuminated 120° Corner C135L Illuminated 135° Corner	CCEA Chicago Environmental Air Modification

Control Options⁴

NX Networked – Wired

NXE NX Wired Dual RJ45 SmartPORTS, without Sensor¹³, 14

NXESM NX Wired Dual RJ45 SmartPORTS and Integral NXSMP2-SMI PIR Occupancy Sensor with Automatic Dimming Photocell and Bluetooth® Programming¹³, 14

NX Networked – Wireless

NXWSM NX Networked Wireless Enabled Integral NXSMP2-SMI PIR Occupancy Sensor with Automatic Dimming Photocell and Bluetooth® Programming¹³, 14, 15

NXW NX Networked Wireless Radio Module NXRM2 and Bluetooth® Programming, without Sensor¹³, 14

Sensors

SD1 Daylight Sensor Required. Enter quantity. 2SD1 = 2 daylight sensors/row

SO1 Occupancy Sensor Required. Enter quantity. 2SO1 = 2 occupancy sensors/row

Notes:

1 Ceiling type can not be retrofitted in the field.

2 Not Available with Patterns.

3 Must be ordered with AD.

4 Additional lead time may be applicable. Contact factory.

5 Visit [currentlighting.com/litecontrol](http://currentlighting.com/litecontrol) for details.

6 Must be ordered with D05 Driver option; excludes 2' lengths and patterns.

7 Specifiable in 50 lumen increments. Reference the Performance Data Table for full performance offering and exceptions.

8 Must be ordered with 2230TD or 2765T option

9 Excludes Emergency Battery Pack 'EF' Option. Excludes DALI, DALIP and Lutron (LEC) Dimming Drivers

10 EF - 10W battery powered driver. Provides a minimum of 90 minutes of emergency lighting. Inverter-Compatible. Provided by others.

11 Only applicable when specified with Emergency/Nightlight.

12 Contact Factory for pattern configurations. Approval drawings required.

NX In-Fixture Control Options:

13 Not available for row mounting. Only available with 0–10V Driver options. Contact factory for Length restrictions.

14 Refer to NX Integrated Controls Reference Table for Functionality of Options.

15 NX Sensors with Bluetooth, BLE, provides remote commission only.

DATE:

LOCATION:

TYPE:

PROJECT:

CATALOG #:

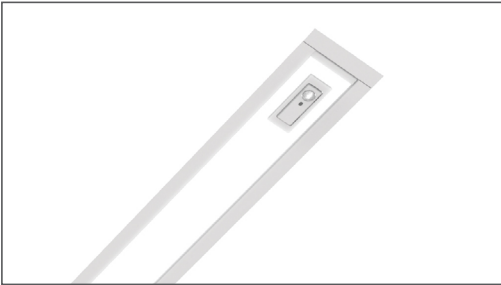
CONTROLS OPTIONS AND FUNCTIONALITY



Control Option Ordering Logic & Description		Control Option Functionality										Control Option Components	
		Sensor	Networkable	Grouping	Scheduling	Occupancy/Motion	Daylight Harvesting	0-10V Dimming	On/Off Control	Bluetooth® App Programming	Sensor Height		
NX Wired	NXE	NX Wired Dual RJ45 SmartPORTS, without Sensor	N/A	✓	✓	✓	-	-	✓	✓	Requires NXBTC dongle <sup>1</sup>	-	NXDSP
	NXERM	NX Wired Dual RJ45 SmartPORTS and Integral NXSMP2-LMI PIR Occupancy Sensor with Automatic Dimming Photocell and Bluetooth® Programming	NXSMP2-LMI	✓	✓	✓	✓	✓	✓	✓	Max: 12'		NXSMP2-LMI NXDSP
NX Wireless	NXWRM	NX Networked Wireless Enabled Integral NXSMP2-LMI PIR Occupancy Sensor with Automatic Dimming Photocell and Bluetooth® Programming	NXSMP2-LMI	✓	✓	✓	✓	✓	✓	✓	Max: 12'		NXSMP2-LMI
	NXW	NX Networked Wireless Radio Module NXRM2 and Bluetooth® Programming, without Sensor	N/A	✓	✓	✓	-	-	✓	✓	-		NXRM2-H

1 NXBTC needs to be plugged into an available NX SmartPort™ on the fixture network

2L-R-D WITH NXWRM WIRELESS CONTROL OPTION



CONTROLS TECHNICAL SUPPORT  
1-800-888-8006 (7:00 am–7:00 pm est)

APP INFORMATION  
NX Lighting Controls App



The NX Lighting Controls App is a free to use mobile application for programming both an NX Lighting Controls System or Standalone Bluetooth Sensors. The mobile app allows you to configure devices, discover and setup wireless enabled luminaires and program your NX system settings.



Android



Apple iOS

NX Connect App



The NX Connect mobile App is a free to use mobile application for programming a NX Connect System. The mobile App allows you to discover, configure and share your NX Connect system.



Apple iOS

CONTROLS OPTIONS AND FUNCTIONALITY (CONTINUED)

**SpectraSync™ Color Tuning Technology:**

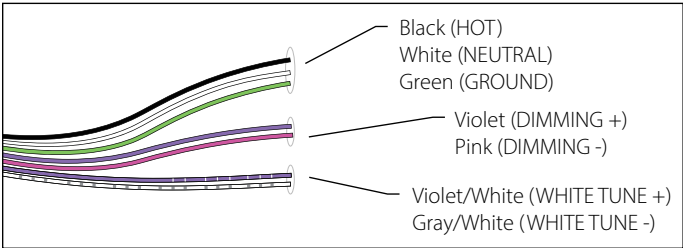
Control your space based on the needs of the application, specific activities throughout the day and preferences of the occupants with distinct SpectraSync™ Color Tuning Technologies.



SPECTRASYNC COLOR TUNING TECHNOLOGY		
Mode	Kelvin Range	Description
Dim to Warm	2200K–3000K	Mimics the familiar warming effect that occurs with traditional incandescent sources as they are dimmed
Tunable White	2700K–6500K	Offers users the ability to tailor CCT to their personal preference, enhancing task visibility, material and colors or the aesthetics of the space
Scheduled White	2700K–6500K	Mimics the rhythm of natural light or follows an alternative user-defined schedule throughout the day, enhancing an occupant's mood and well-being

**SpectraSync Tunable White**

Available in 2765T (2700K–6500K). Requires two 0–10V controllers, one for intensity and one for CCT. Minimum 5% dimming.

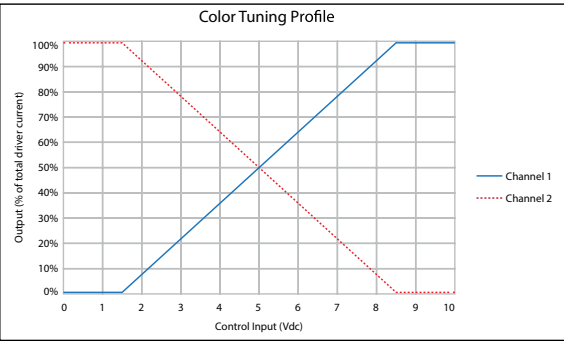


SpectraSync Tunable White luminaires are provided with two 0–10V circuits. The violet and pink circuit is for wiring to any qualified 0–10V controller for dimming. The violet/white and gray/white circuit is for wiring to any qualified 0–10V controller for Tunable White CCT control.

- Controller Manufacturer Data**

SpectraSync Tunable White was designed to be used with sinking style dimmers (provided by others) and is compatible with:

  - Current: NX Lighting Controls Room Controllers (NXRC) and In-fixture Controllers (NXFM)
  - Lutron: DDTV, DVSTV, and NFTV dimmers
  - Wattstopper: ADF120277 and CD4BL (Titan) dimmers



PERFORMANCE DATA TABLE

The table below shows the delivered lumens for the various lumen outputs. Use this chart in connection with the output multiplier capability to deliver any output required.

Nomenclature	Lumens/Ft	W/Ft	Efficacy
Downlight			
D030 (min)	300	2.8	108
D050	500	4.5	111
D100	750	6.7	111
D100 (max)	1000	9.1	110

(wattage may vary up to 5% from published)

**Output Multiplier Table**

Photometrics for the Mod Family are published here at a nominal 3500K temperature. This table may be used to approximate the lumen values at different Kelvin temperatures. Power consumption would stay the same.

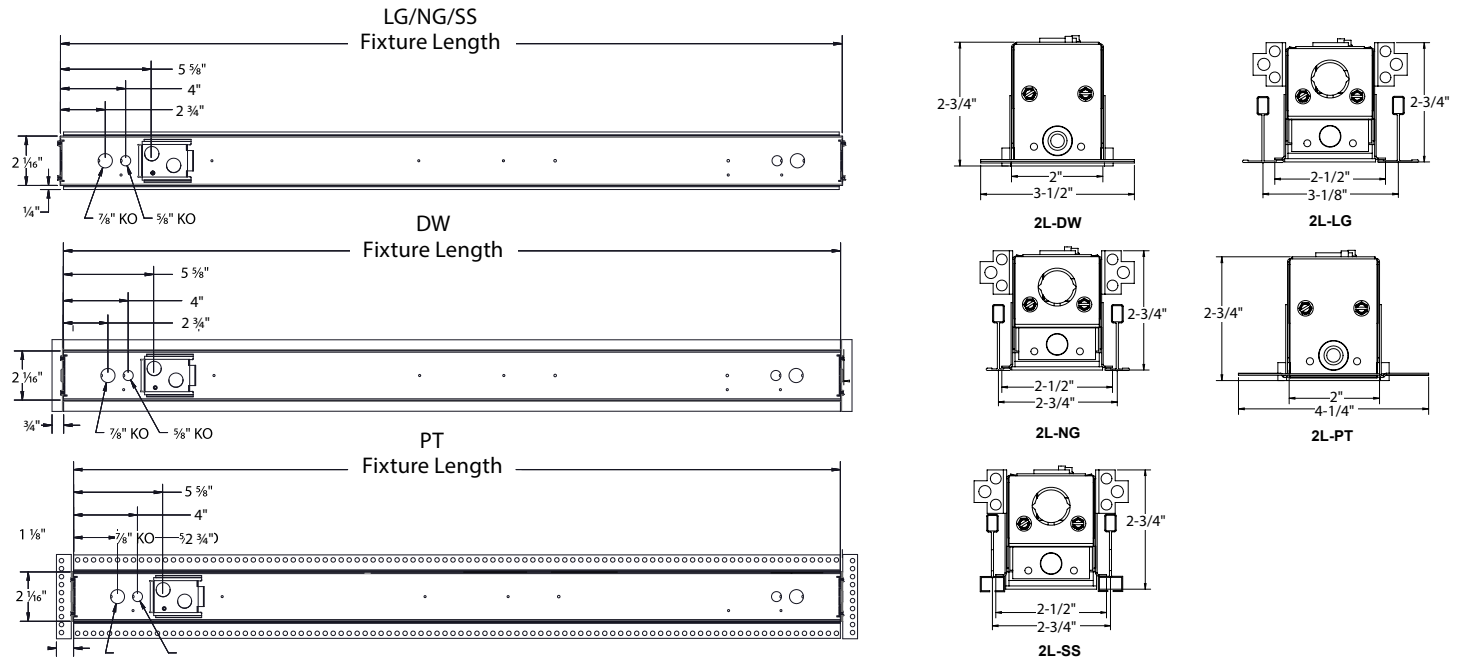
Option	2700K 90 CRI	3000K 90 CRI	3500K 90 CRI	4000K 90 CRI	5000K 90 CRI
SOF	0.89	0.96	1.00	1.00	0.99
BWO	0.62	0.67	0.70	0.70	0.69
ASYM	0.89	0.96	1.00	1.00	0.99
BAT	0.89	0.96	1.00	1.00	0.99
DRP	0.89	0.96	1.00	1.00	0.99

# 2L-R-D

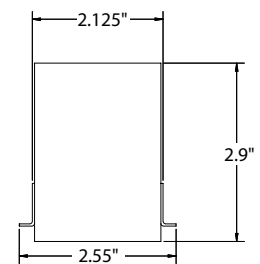
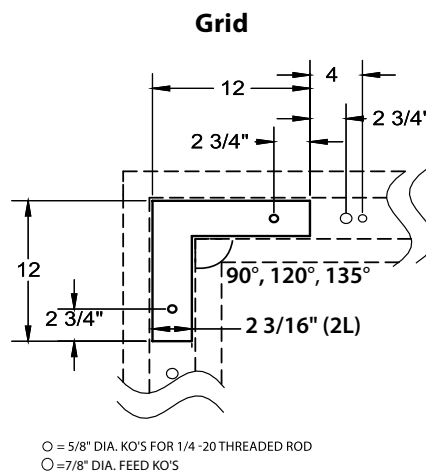
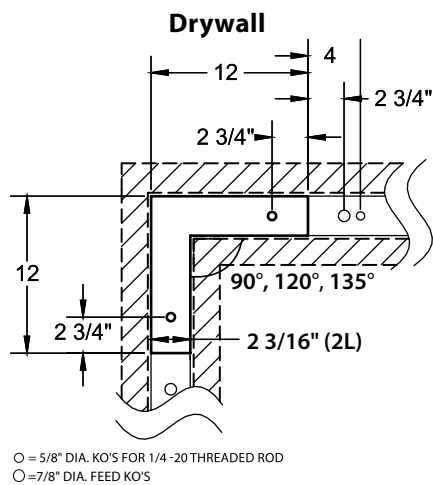
MOD™ 2 LED RECESSED DIRECT

DATE:	LOCATION:
TYPE:	PROJECT:
CATALOG #:	

## DIMENSIONS



## INDIVIDUAL MOUNTING



## PATTERNS

## END CAP VIEW

PHOTOMETRY

2L-R-D-4-SOF-CX-35K9-D075

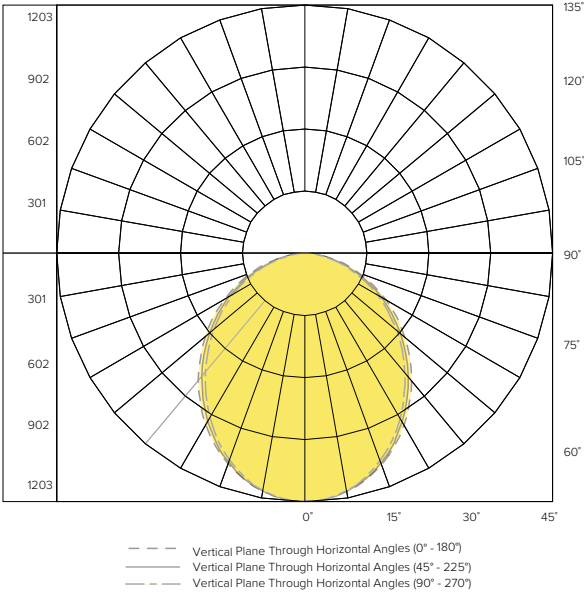
LUMINAIRE DATA

Description	2L Linear Direct 3500K
Delivered Lumens	3000
Watts	27
Efficacy	111
Mounting	Recessed

ZONAL LUMEN SUMMARY

Zone	Lumens	% Luminaire
0-40	1437.41	47.90
0-60	2432.76	81.10
0-90	3000.00	100.0
0-180	3000.00	100.0

POLAR GRAPH

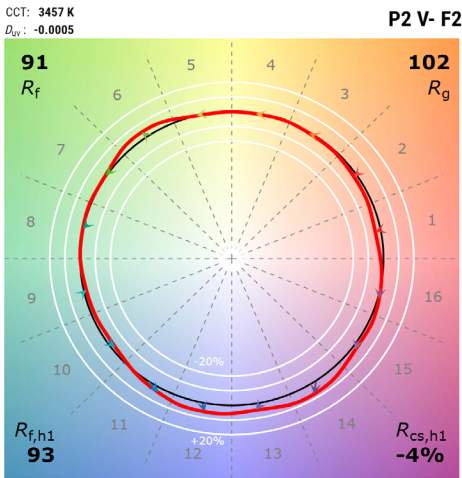


2L-R-D  
MOD™ 2 LED RECESSED DIRECT

DATE:	LOCATION:
TYPE:	PROJECT:
CATALOG #:	

TM-30 DATA

COLOR VECTOR GRAPHIC



\*Graphics shown are at 35K

— Reference Illuminant — Test Source

2L-R-D
MOD™ 2 LED RECESSED DIRECT

DATE: LOCATION:
TYPE: PROJECT:
CATALOG #:

ADDITIONAL INFORMATION

Driver

Table with 2 columns: Driver Code, Description. Rows include D01, D00, D05, DS1, DS0, LEC, DALI, DALIP, and NDM.

Rated Life

Tested in accordance to LM79-2008 & derived from EPA TM-21 calculator
L70: 280,000 (calculated per TM-21 extrapolated curve)
L70: >61,000 (reported per TM-21/LM80 6x's limitation)
L90: 72,000 (calculated per TM-21 extrapolated curve)
L90: >61,000 (reported per TM-21/LM80 6x's limitation)

Rated Life (Driver)

Standard = 100,000 hours
Lutron = 50,000 hours