

# Lighting Controls

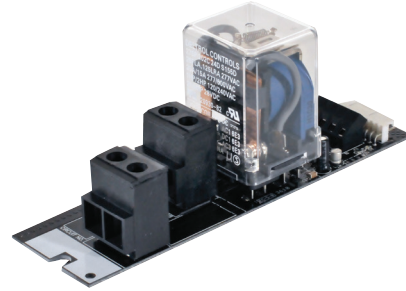
## CXR SERIES

CX COMMERCIAL LIGHTING CONTROL PANELS

DATE:	LOCATION:
TYPE:	PROJECT:
CATALOG #:	

### FEATURES

- Relays are mounted to individual relay cards
- Four types of relays - 20A/1P, N/O and 20A/2P, N/O, N/C (14K SCCR) and 30A 1P latching (18K SCCR)
- Smart Relay card self-identifies type automatically to panel
- Each relay includes 1 programmable input for low voltage switches, photocells or motion sensors
- Relay cards include a manual override control button and LED status indication



### SPECIFICATIONS

#### CONSTRUCTION

- Mounts inside a CX series panel
- Pre-drilled mounting hole for securing relay card
- Individual relay cards - 1P and 2P are equal size
- 1.625" W x 5.5"L (41.28mm W x 139.7mm L)
- Green - Indicates relay is in closed position
- Red- Dependant on input being programmed

#### INSTALLATION

- 32°-112°F (0°-50°C)
- Relative humidity (non-condensing): 10%-90%
- Wire size 14, 16, 18, 20, 22 AWG
- Recommended tightening torque: 0.45 N-M (4 IN-LBS.)

#### ELECTRICAL

- CXR2N 120/277VAC (50/60Hz)
- CXR3L 120/277/347VAC (50/60Hz)
- CXR3LEM 120/277/347VAC (50/60Hz)
- CXRTN 208/240/480VAC (50/60Hz)
- CXRTC 208/240/480VAC (50/60Hz)
- CX04/CX08; 24VDC, 150mA (max. 300mA)
- CX16/CX24; 24VDC, 150mA (max. 900mA)
- 500A @ 2ms (CXR3LEM only)

#### CERTIFICATIONS

- UL 916, CAN/CSA C22.2 No.205
- UL 924, CAN/CSA C22.2 No. 141 Emergency Lighting (CXR3LEM)

#### CERTIFICATIONS (CONTINUED)

- This product qualifies as "designated country construction material" per FAR 52.225-11 Buy American-Construction Materials under Trade Agreements effective 5/27/2020.

#### WARRANTY

- 5 year limited

### ORDERING GUIDE

Example: CXR2N-T

CATALOG #

CXR			TAA
Model	Relay Type		
CXR CX lighting control panel relay	<b>2N</b>	1-Pole, Elect. Held N.O. 20A@120VAC-Tungsten; 16A @ 277VAC-Elect. Ballast; 20A @277VAC-Mag. Ballast; 14K SCCR @277VAC	<b>Blank</b> Standard Product
	<b>3L</b>	1-Pole Latching 20A @120VAC-Tungsten; 16A @120/277VAC-Elect. Ballast; 30A @120/277VAC-Mag. Ballast; 20A @347VAC-Elect. Ballast; 18K SCCR @347VAC	<b>T</b> TAA
	<b>3LEM</b>	1-Pole, Latching 20A @120VAC-Tungsten; 16A @120/277VAC-Elect. Ballast; 30A @120/277VAC-Mag. Ballast; 20A @347VAC-Elect. Ballast; 20A @347VAC-Mag. Ballast; 5K SCCR @347VAC	
	<b>TN</b>	2-Pole, Elect. Held N.O. 20A @208/240/480VAC Mag. Ballast; 14K SCCR @480VAC	
	<b>TC</b>	2-Pole, Elect. Held N.C. 20A @208/240/480VAC Mag. Ballast; 14K SCCR @480VAC	

# Lighting Controls

## CXR SERIES

CX COMMERCIAL LIGHTING CONTROL PANELS

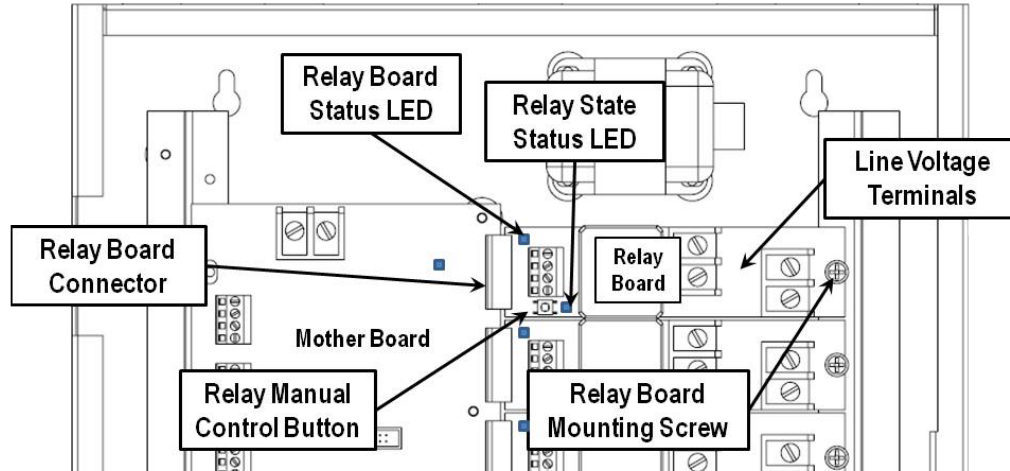
DATE: \_\_\_\_\_ LOCATION: \_\_\_\_\_

TYPE: \_\_\_\_\_ PROJECT: \_\_\_\_\_

CATALOG #: \_\_\_\_\_

### ADDITIONAL INFORMATION

#### Wiring Diagrams



#### Relay Specifications

Characteristics		Load Ratings					SCCR rating
Type	Poles	VAC	Tungsten	Flour. Ballast*	HID Ballast	Motor Rating	
CXR2N - Elect Held, N.O.	1	120	20A	N/A	N/A	3/4 HP	14K Amps
		227	N/A	16A	20A	3/4 HP	
CXR3L - Latching	1	120	20A	16A	30A	1 HP	18K Amps
		277	N/A	16A	30A	N/A	
		347	N/A	20A	N/A	N/A	
CXR3LEM - Latching*	1	120	20A	16A	30A	1 HP	5K Amps
		277	N/A	16A	30A	3/4 HP	
		347	20A	20A	20A	N/A	
CXR2N - Elect Held, N.O.	2	208/240/480	N/A	N/A	20A	2 HP	14K Amps
CXR2C - Elect Held, N.C.	2	208/240/480	N/A	N/A	20A	2 HP	

\* Includes mechanical override lever, suitable for use on emergency lighting circuits