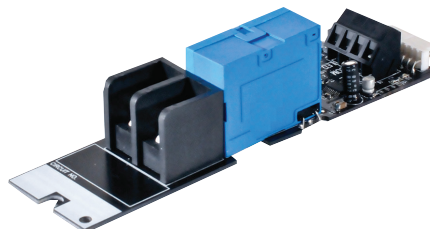


NXR SERIES

NX PANEL RELAYS

FEATURES

- Compatible with all model NXP panels
- Relays are individually replaceable
- Smart Relay Card self-identifies type automatically to panel
- Each relay includes 1 programmable input for low voltage switches, photocells, or motion sensors
- Plug-in connector to panel motherboard and a single screw to secure it to the panel enclosure
- Manual override control button and LED status indication
- Listed to UL916 standard, UL924 and Canadian cUL
- Five-year limited warranty



CONTROL TECHNOLOGY



SPECIFICATIONS

CONSTRUCTION

- 1.62" (41.28mm) W x 5.5" (239.7mm) L

MOUNTING

- Mounts inside an NX series panel
- Pre-drilled mounting hole for securing relay card
- Individual relay cards - 1P and 2P are equal size

ELECTRICAL

- Operating Voltages
 - NXR-3L 120/277/347VAC (50/60Hz)
 - NXR-3LEM 120/277/347VAC (50/60Hz)
 - NXR-TN 208/240/480VAC (50/60Hz)
 - NXR-TC 208/240/480VAC (50/60Hz)

ELECTRICAL (CONTINUED)

- Class 2 I/O Output Rating: NX08/NX16/NX24/NX32/NX48; 24VDC, 150mA (max. 900mA)
- Inrush Withstand - 500A @ 2MS (NXR-3LEM only)
- Class 2 I/O Terminal:
 - Wire size 14, 16, 18, 20, 22 AWG
 - Recommended Tightening Torque: 0.45 N-M (4 in-lbs.)

OPERATIONS

- Green - Indicates relay is in closed position
- Red- Dependant on input being programmed

OPERATING ENVIRONMENT

- 32° to 112°F (0°-50°C)
- Relative humidity (non-condensing): 10%-90%

CERTIFICATIONS

- cULus listed

CERTIFICATIONS (CONTINUED)

- UL 916, CAN/CSA C22.2 No. 205
- UL 924, CAN/CSA C22.2 No. 141 Emergency Lighting (NXR-3LEM)
- This product qualifies as "designated country construction material" per FAR 52.225-11 Buy American-Construction Materials under Trade Agreements effective 5/27/2020.

WARRANTY

- 5 year limited

ORDERING GUIDE

Example: NXR-3LEM-T

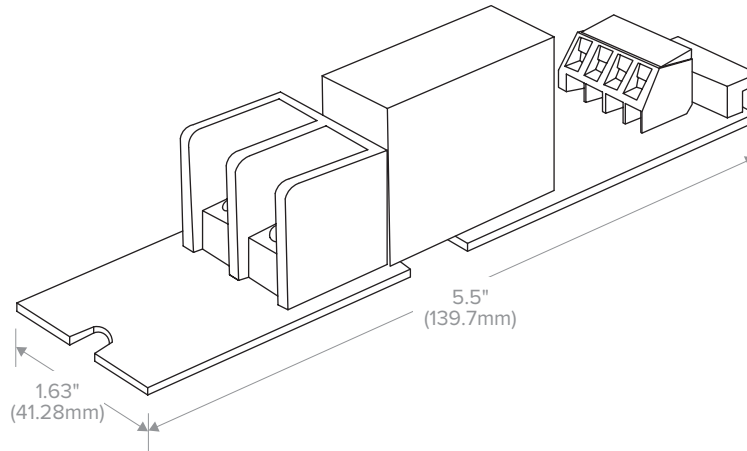
CATALOG #

Model	Relay Type	TAA
NXR NX Relay	3L 1-Pole Latching 20A @120VAC-Tungsten; 16A @120/277VAC-Elect. Ballast; 30A @120/277VAC-Mag. Ballast; 20A @347VAC-Elect. Ballast; 18K SCCR @347VAC 3LEM 1-Pole, Latching 20A @120VAC-Tungsten; 16A @120/277VAC-Elect. Ballast; 30A @120/277VAC-Mag. Ballast; 20A @347VAC-Elect. Ballast; 20A @347VAC-Mag. Ballast; 5K SCCR @347VAC TN 2-Pole, Elect. Held N.O. 20A @208/240/480VAC Mag. Ballast; 14K SCCR @480VAC TC 2-Pole, Elect. Held N.C. 20A @208/240/480VAC Mag. Ballast; 14K SCCR @480VAC	Blank Standard Product T TAA

NXR SERIES

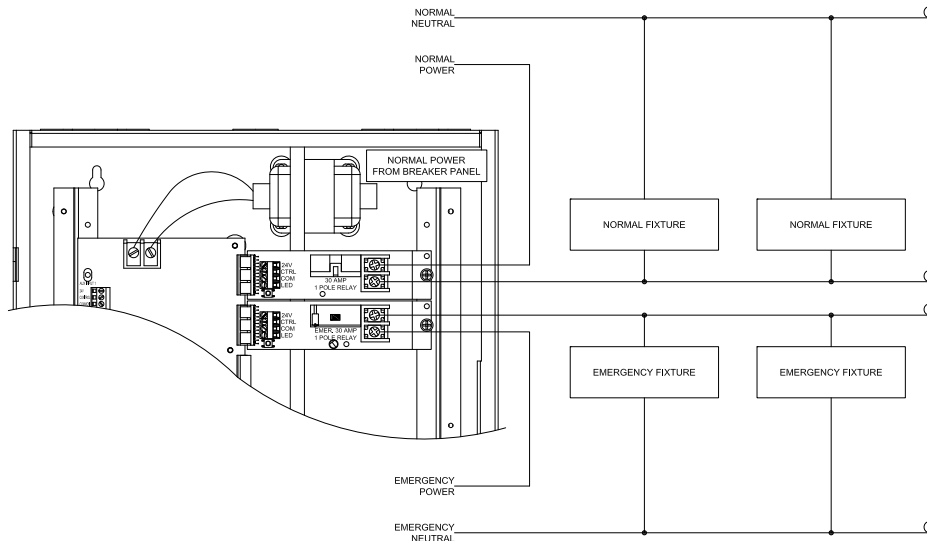
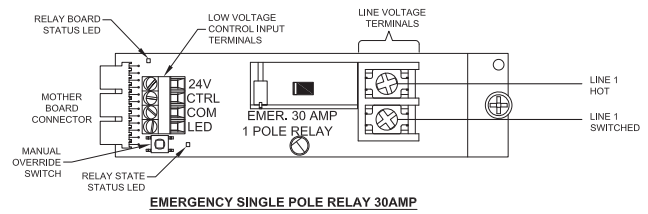
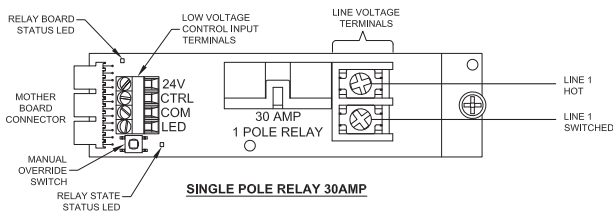
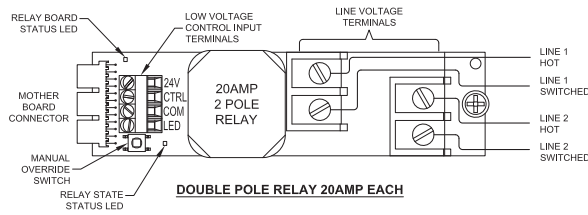
NX PANEL RELAYS

DIMENSIONS



ADDITIONAL INFORMATION

Wiring Diagrams



NXR SERIES

NX PANEL RELAYS

ADDITIONAL INFORMATION (CONTINUED)

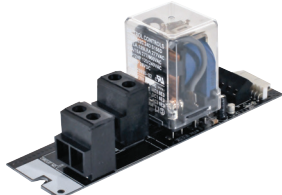
Relay Specifications

Characteristics			Load Ratings				SCCR Rating
Type	Poles	VAC	Tungsten	Elect. Ballast	Magnetic Ballast	Motor Rating	
NXR-3L - Latching	1	120	20A	16A	30A	1 HP	18K Amps
		277	N/A	16A	30A	N/A	
		347	N/A	20A	N/A	N/A	
NXR-3LEM - Latching*	1	120	20A	16A	30A	1 HP	5K Amps
		277	N/A	16A	30A	3/4 HP	
		347	20A	20A	20A	N/A	
NXR-TN - Elec. Held, N.O.	2	208/240/480	N/A	N/A	20A	2 HP	14K Amps
NXR-TC - Elec. Held, N.C.	2	208/240/480	N/A	N/A	20A	2 HP	

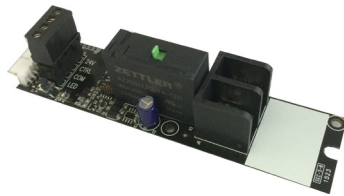
Relay Types

Notes:

* Includes mechanical override lever, suitable for use on emergency lighting circuits



NXR-TC and NXR-TN



NXR-3LEM