

# Lighting Controls

DATE: \_\_\_\_\_ LOCATION: \_\_\_\_\_

TYPE: \_\_\_\_\_ PROJECT: \_\_\_\_\_

CATALOG #: \_\_\_\_\_

## UL924 BYPASS/SHUNT RELAY

EMERGENCY LIGHTING CONTROL

### FEATURES

- UL924 listed emergency lighting bypass/shunt relay
- Fail-safe operation (energized in normal mode; drops to emergency on power loss)
- 20A SPDT contacts for lighting loads
- Multi-voltage coil: 24 VAC, 24 VDC, or 120 VAC
- Continuous-duty coil (24/7 operation)
- Bypasses switches, dimmers, sensors, and panels during emergency
- 0–10V dimming override (forces full brightness on outage)
- Generator or inverter compatible
- LED status indicator (ON = normal power)



### SPECIFICATIONS

#### CONSTRUCTION

- NEMA 1 Housing
- 2.39" H x 3.31" W x 1.81" D
- Color: Yellow
- Noryl HS2000
- Weight: .51 lbs

#### INSTALLATION

- UL2043 Plenum rated for external junction box mounting via 1/2" threaded nipple
- Operating Humidity: 5% to 95% RH (Non-condensing)
- Operating Temperature: -30°F to 140°F (-30°C to 60°C)

#### ELECTRICAL

- CONTACT RATINGS:
  - 20A Resistive @ 277VAC
  - 20A Ballast @ 277VAC
  - 16A Electronic Ballast @ 277VAC (N/O)
  - 10A Tungsten @ 120VAC (N/O)
  - 770VA Pilot Duty @ 120VAC
  - 1,110VA Pilot Duty @ 277VAC
  - 2HP @ 277VAC
  - 1HP @ 120VAC
- COIL VOLTAGE:
  - UL924SR120: 24VAC/DC; 120VAC; 50-60 Hz
  - UL924SR277: 24VAC/DC; 208-277VAC; 50-60 Hz
  - Drop Out = 2.1VAC/3.8VDC
  - Pull In = 18VAC/22VDC

#### ELECTRICAL (CONTINUED)

- COIL CURRENT:
  - 50mA @ 18VAC
  - 83mA @ 24VAC
  - UL924SR120: 47mA @ 120VAC
  - UL924SR277: 69mA @ 208-277VAC
  - 33mA @ 22VDC
  - 35mA @ 24VDC
  - 47mA @ 30VDC

#### CERTIFICATIONS

- UL/cUL, CE, RoHS, UL924 Listed for emergency lighting control

#### WARRANTY

- 10 year warranty

### ORDERING GUIDE

Example: UL924SR120

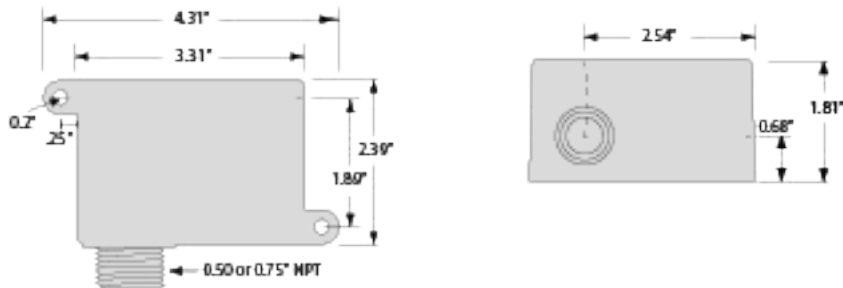
CATALOG #	Model
UL924SR120	UL924 Emergency Lighting Bypass/Shunt Relay, 20 Amp SPDT, 120VAC Coil
UL924SR277	UL924 Emergency Lighting Bypass/Shunt Relay, 20 Amp SPDT, 277VAC Coil

# Lighting Controls

## UL924 BYPASS/SHUNT RELAY

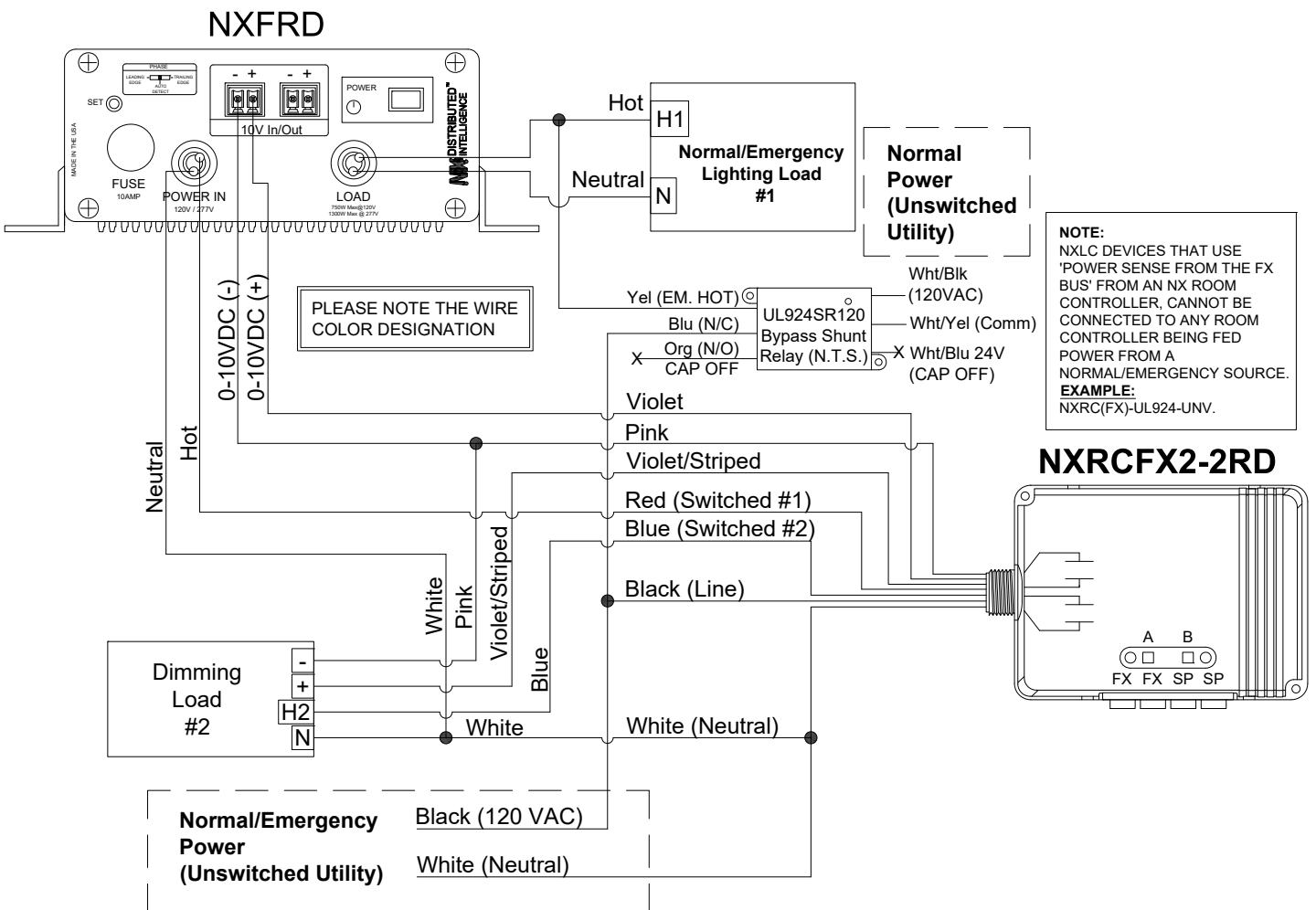
EMERGENCY LIGHTING CONTROL

### DIMENSIONS



### ADDITIONAL INFORMATION

#### Wiring Diagrams



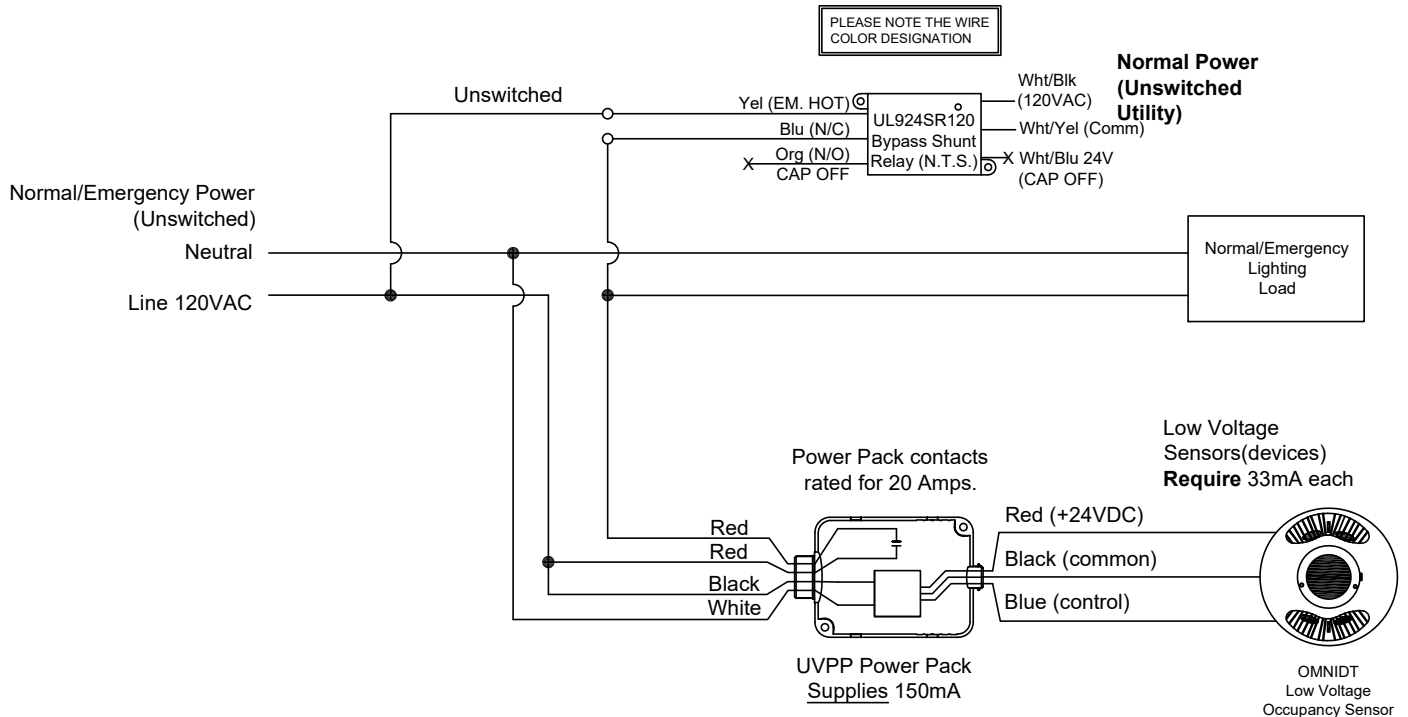
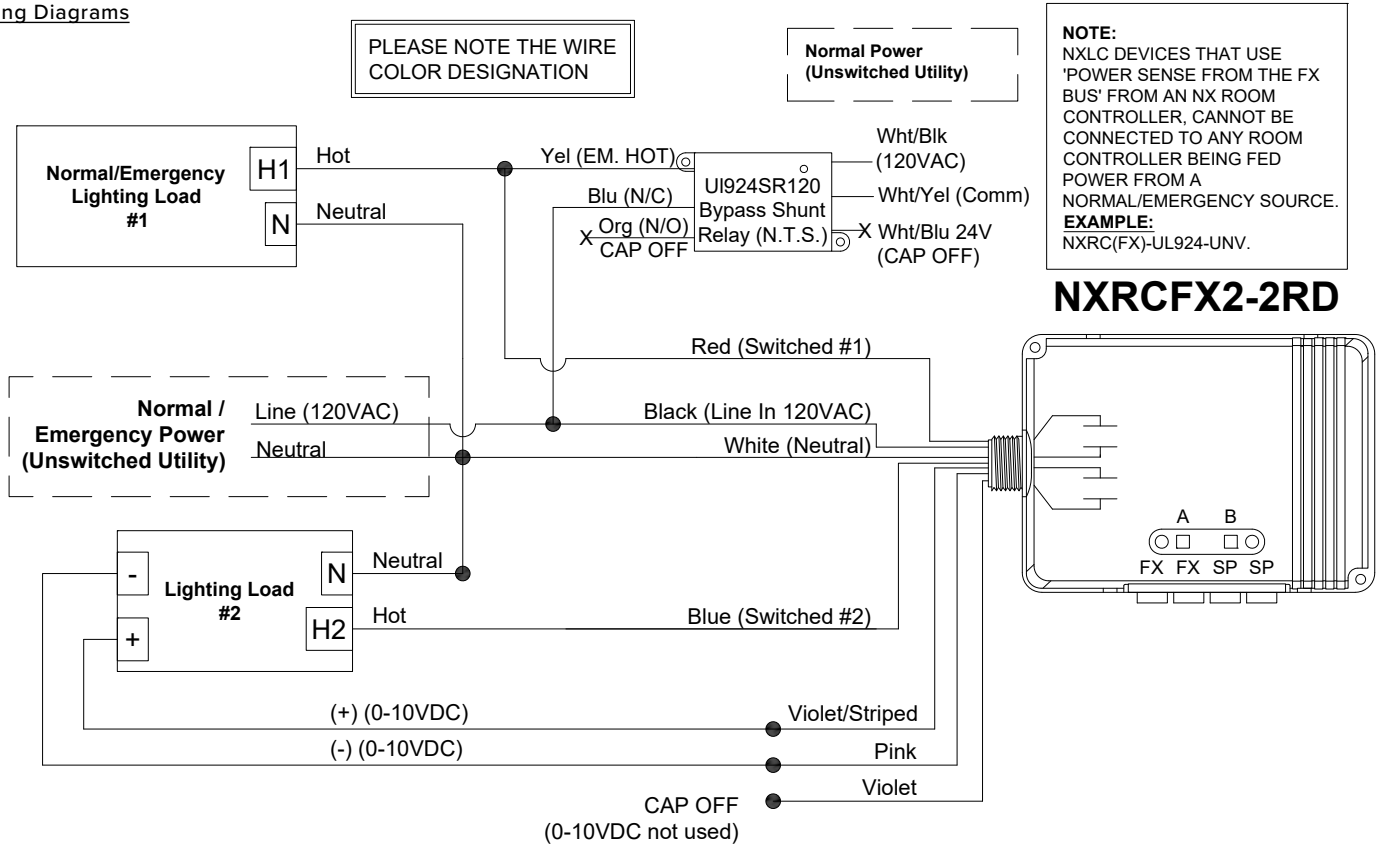
# Lighting Controls

## UL924 BYPASS/SHUNT RELAY

EMERGENCY LIGHTING CONTROL

### ADDITIONAL INFORMATION CONTINUED

#### Wiring Diagrams





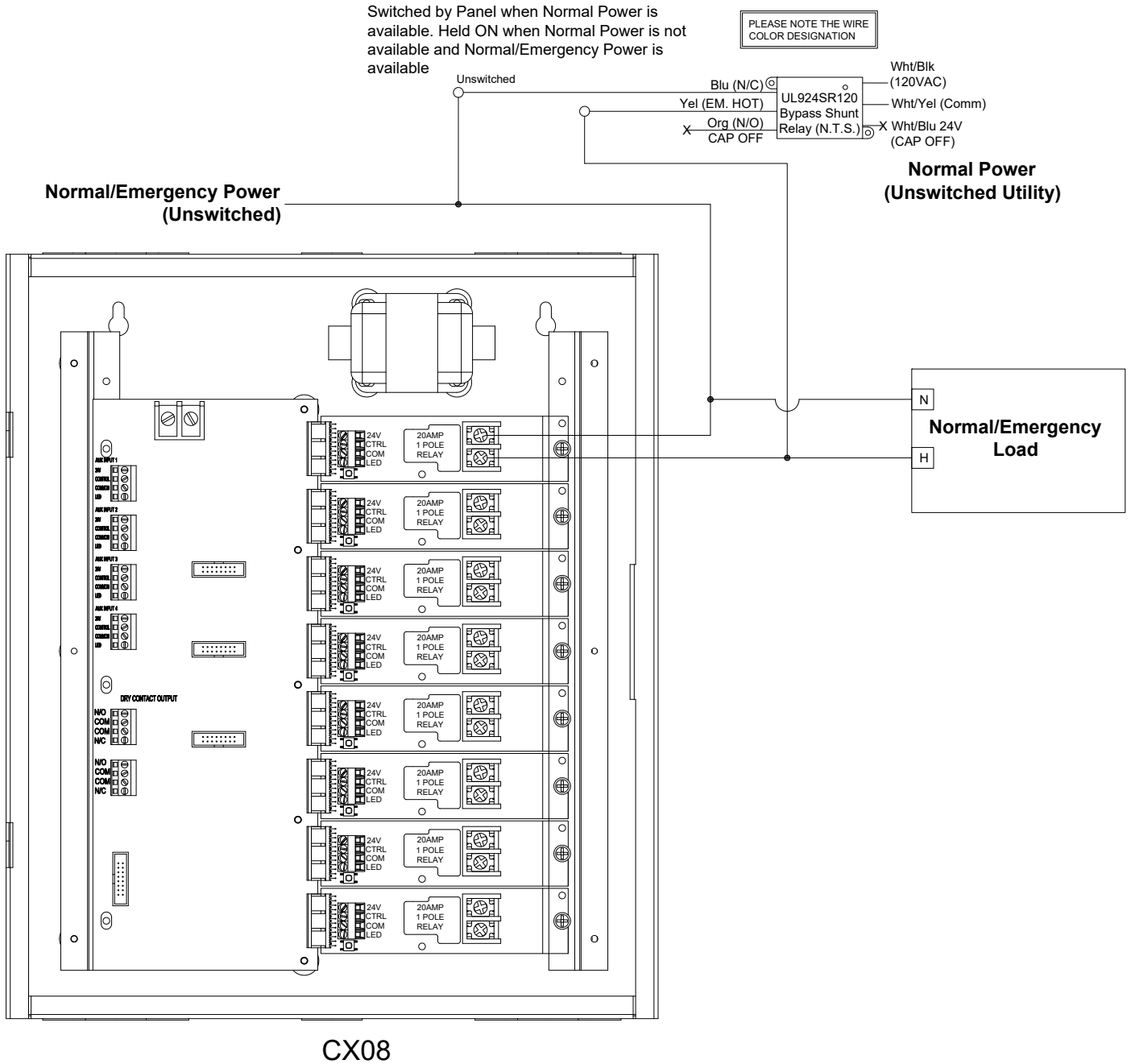
# Lighting Controls

## UL924 BYPASS/SHUNT RELAY

EMERGENCY LIGHTING CONTROL

### ADDITIONAL INFORMATION CONTINUED

#### Wiring Diagrams



# Lighting Controls

## UL924 BYPASS/SHUNT RELAY

EMERGENCY LIGHTING CONTROL

### ADDITIONAL INFORMATION CONTINUED

#### Wiring Diagrams

