

# 6L-WS-D

MOD™ 6 LED WALL/SLOT DIRECT

DATE:	LOCATION:
TYPE:	PROJECT:
CATALOG #:	

## FEATURES

- Variable Intensity technology provides a range of specifiable outputs and resulting fixture wattages
- 2 SDCM color consistency
- Perimeter mount with 3 regression depths
- TriGain Technology provides superior color quality without compromising efficacy. The 6L-WS-D series delivers 90 CRI at 118 LPW



## CONTROLS TECHNOLOGY



## SPECIFICATIONS

### CONSTRUCTION

- Housing constructed from die-formed and welded steel with wiring knockouts in top
- End caps constructed from die-formed steel. Installs from below via magnetic interface
- End caps overlap diffuser at each fixture end to eliminate gaps and LED visibility

### OPTICAL PERFORMANCE

- 2 SDCM color consistency, 90 CRI
- SOF: Soft diffuse acrylic lens
- BWO: White blade baffle with softglo lens overlay. Output multiplier (.70)

### INSTALLATION

- Finish of wall should extend 7" above ceiling. Continuous Fixture Support Rail is provided for ease of installation. Ceiling construction must be supported independently of the lighting. Installations with straight extensions must be specified with wall-to-wall lengths. For optimal spacing from the wall, the amount of light provided will be rounded down to the nearest foot, unless this results in the fixture being < 2" away from the wall
- Ex. A 20'-4" through 21'-3" wall-to-wall length will result in 20' of light. A wall-to-wall length of 20'-3" will produce 19' of light. For recommended wall uniformity, fixture should be between 2-4" from wall. For more precise lighting, 3" increment fixtures are available.
- LG/NG/SS Mounting: Plenum shield to rest on t-bar
- DW Mounting: Trimless appearance with fixture resting on back of drywall. For non-SE rows, drywall must be "finished" to close off fixture

### INSTALLATION (CONTINUED)

- Patterns: End of row straight extensions allow for adjustability of fixture to be 0.5"-8.5" away from wall. For NRW diffuser option, fixture is recommended to be no less than 2" away from wall. Field cut corner pieces allow for 85-160° inside corners and 70-160° outside corners. See image for further clarification

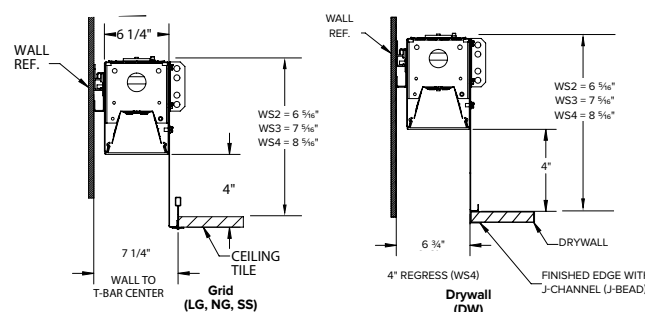
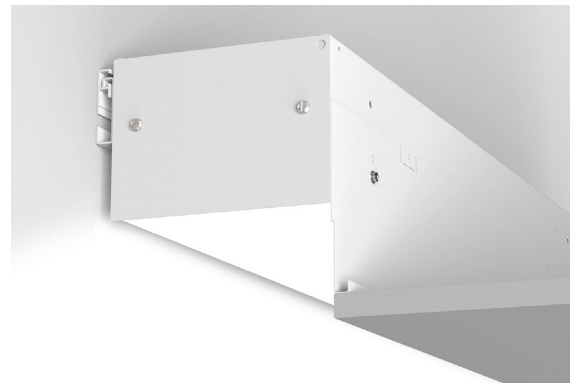
### ELECTRICAL

- Variable Intensity (VI) technology allows precise specification of fixture output/wattage. Fixture will be programmed and labeled to specification. Indirect and direct hemispheres can be independently specified
- LED boards and drivers can be accessed and removed from fixture, while installed
- Entire LED module can be removed and replaced
- 1C (1 Circuit) Fixture wired for a single circuit
- Emergency Battery: 10W battery powered driver. Provides a minimum of 90 minutes of emergency lighting. Inverter-Compatible. Provided by others. Available in 6' & 8' fixtures. Available with SOF downlight diffusers
- Current's patented TriGain® phosphor delivers 90 CRI color quality at 80 CRI efficacy

### CONTROLS

- Sensors install between diffusers
- NX Lighting Controls provides options for standalone and networked integrated sensor with wired or wireless connectivity for NX system deployments

MOD™



	Weight
6L-WS-D	3 lbs/ft

### CONTROLS (CONTINUED)

- SpectraSync™ Color Tuning Technology: Control your space based on the needs of the application, specific activities throughout the day and preferences of the occupants

### CERTIFICATIONS

- CSA listed for damp location
- IBEW
- AF of L
- UL924
- This product meets federal procurement law requirements under the Buy American Act (FAR 52.225-9) and Trade Agreements Act (FAR 52.225-11). See [Buy America\(n\) Solutions](#).
- Emergency Battery Backup options are California Energy Commission (CEC) Title 20 Compliant.

### WARRANTY

- LED boards - 5 years
- LED drivers (standard) - 5 years
- LED drivers (Lutron) - 3 years

KEY DATA	
Lumen Range Per Foot	D: 300-1250
Wattage Range Per Foot	2.6-10.0
Efficacy Range (LPW)	110-118
Rated Life (Hours)	L90: >60,000

# 6L-WS-D

MOD™ 6 LED WALL/SLOT DIRECT

DATE:	LOCATION:
TYPE:	PROJECT:
CATALOG #:	

## ORDERING GUIDE

**Example:** 6L-WS2-DW-D-8.3-08-SOF-C1-27K9-D030-D01-1C-UNV-EC

CATALOG #

6L	Series	Regressed Depth	Ceiling Type <sup>1</sup>	Fixture Distribution	Row Length (in Feet)	Row Length adder	Max Length in Row	Direct Optical Distribution
6L	MOD	<b>WS2</b> Wall/Slot perimeter mounted, 2" regressed depth <b>WS3</b> Wall/Slot perimeter mounted, 3" regressed depth <b>WS4</b> Wall/Slot perimeter mounted, 4" regressed depth	<b>DW</b> Drywall (trimless finish) <b>LG</b> 15/16 Grid <b>NG</b> 9/16 Grid <b>SS</b> 9/16 Screw Slot	<b>D</b> Direct	—' Enter in foot increments	<b>.3</b> Row Length +3" <b>.6</b> Row Length +6" <b>.9</b> Row Length +9" Measured in Inches	<b>02</b> 2', 609 mm <b>03</b> 3', 914 mm <b>04</b> 4', 1219 mm <b>05</b> 5', 1524 mm <b>06</b> 6', 1829 mm <b>08</b> 8', 2438 mm	<b>SOF</b> Soft Diffuse Lens <b>BWO</b> Blade Baffle with Overlay <sup>2</sup>

Finish/Color <sup>3</sup>	Color Temperature	Direct Output/ft <sup>6</sup>	Driver	Circuiting	Voltage
<b>C1</b> Matte White (Default) <b>C2</b> Textured Matte White <b>C3</b> Light Silver <b>C4</b> Machined Aluminum <b>C5</b> Carbon Black <b>C6</b> Textured Camera Black <b>CC</b> Custom Color	<b>27K9</b> 2700K, 90 CRI <sup>4</sup> <b>30K9</b> 3000K, 90 CRI <b>35K9</b> 3500K, 90 CRI <b>40K9</b> 4000K, 90 CRI <b>50K9</b> 5000K, 90 CRI <sup>4</sup> <b>2230TD</b> 2200K–3000K SpectraSync™ Dim-to-Warm <sup>4,5</sup> <b>2765T</b> 2700K–6500K SpectraSync™ Tunable White <sup>4,5</sup>	<b>D030</b> 300 (min) <sup>7</sup> to <b>D125</b> 1250 (max)	<b>D01</b> 1% Dimming, 0–10V <b>D00</b> 1% Dim-to-Off, 0–10V <b>D05</b> SpectraSync 5% Dimming, 0–10V <sup>8</sup> <b>DS1</b> 1% Dimming w/ Soft Start, 0–10V <b>DS0</b> 1% Dim-to-Off w/ Soft Start, 0–10V <b>LEC</b> Hi-Lume 1% Ecosystem LED Driver <b>DALI</b> DALI <sup>4</sup> <b>DALIP</b> Powered by DALI (2.0) <sup>4</sup> <b>NDM</b> Non-Dimming	<b>1C</b> 1 Circuit	<b>UNV</b> Universal Voltage (120V through 277V) <b>347</b> 347 Volt <sup>4,9</sup>

## OPTIONAL

Straight Run Termination <sup>13</sup>	Nightlight	Emergency	Thru-wiring	Chicago Environmental Air Modification	Patterns <sup>4, 12, 13</sup>
<b>EC</b> End Cap Enter quantity. 2EC = 2 End Caps <b>SE</b> Straight Extension, 0.5"–8.5" Enter quantity. 2SE = 2 Straight Extensions	<b>NL</b> Nightlight Circuit Required. Enter quantity. 2NL = 2 nightlight circuits/row	<b>EF</b> 10W Emergency Battery Pack. Enter quantity. 2EF = 2 emergency batteries/row. (CEC Title 20 Compliant) <sup>10</sup>	<b>W1</b> No Thru Wire <b>W2</b> Provide Normal and Emergency/ Nightlight Thru Wiring <sup>11</sup> <b>W3</b> Provide Normal Thru Wiring Only	<b>CCEA</b> Chicago Environmental Air Modification	<b>WSC</b> Wall/Slot Corner, 0.5"–8.5"

Control Options <sup>4</sup>	
<b>NX Networked – Wired</b>	
<b>NXE</b>	NX Wired Dual RJ45 SmartPORTS, without Sensor <sup>13,14</sup>
<b>NX Networked – Wireless</b>	
<b>NXW</b>	NX Networked Wireless Radio Module NXRM2 and Bluetooth® Programming, without Sensor <sup>13,14</sup>
<b>Sensors</b>	
<b>SD1</b>	Daylight Sensor Required. Enter quantity. 2SD1 = 2 daylight sensors/row
<b>SO1</b>	Occupancy Sensor Required. Enter quantity. 2SO1 = 2 occupancy sensors/row

### Notes:

- Ceiling Type cannot be retrofitted in the field
- Not Available with Patterns.
- Visit [currentlighting.com/litecontrol](http://currentlighting.com/litecontrol) for details.
- Additional lead time may be applicable. Contact factory.
- Must be ordered with D05 Driver option; excludes 2' lengths and patterns.
- Specifiable in 50 lumen increments. Reference the Performance Data Table for full performance offering and exceptions.
- D030 not available in 2'
- Must be ordered with 2230TD or 2765T option
- Excludes Emergency Battery Pack 'EF' Option. Excludes DALI, DALIP and Lutron (LEC) Dimming Drivers
- EF - 10W battery powered driver. Provides a minimum of 90 minutes of emergency lighting. Inverter-Compatible. Provided by others.
- Only applicable when specified with Emergency/Nightlight.
- Non-illuminated sections.
- NX In-Fixture Control Options:**
- Not available for row mounting. Only available with 0–10V Driver options. Contact factory for Length restrictions.
- Refer to NX Integrated Controls Reference Table for Functionality of Options.



# 6L-WS-D

MOD™ 6 LED WALL/SLOT DIRECT

DATE:	LOCATION:
TYPE:	PROJECT:
CATALOG #:	

## CONTROLS OPTIONS AND FUNCTIONALITY



Control Option Ordering Logic & Description			Control Option Functionality									Control Option Components		
			Sensor	Networkable	Grouping	Scheduling	Occupancy/ Motion	Daylight Harvesting	0-10V Dimming	On/Off Control	Bluetooth® App Programming			Sensor Height
NX Wired	NXE	NX Wired Dual RJ45 SmartPORTS, without Sensor	N/A	✓	✓	✓	-	-	✓	✓	Requires NXBTC dongle <sup>1</sup>	-		NXDSP
NX Wireless	NXW	NX Networked Wireless Radio Module NXRM2 and Bluetooth® Programming, without Sensor	N/A	✓	✓	✓	-	-	✓	✓	✓	-		NXRM2-H

<sup>1</sup> NXBTC needs to be plugged into an available NX SmartPort™ on the fixture network

## CONTROLS TECHNICAL SUPPORT

1-800-888-8006 (7:00 am–7:00 pm est)

## APP INFORMATION

### NX Lighting Controls App



The NX Lighting Controls App is a free to use mobile application for programming both an NX Lighting Controls System or Standalone Bluetooth Sensors. The mobile app allows you to configure devices, discover and setup wireless enabled luminaires and program your NX system settings.



Android



Apple iOS

### NX Connect App



The NX Connect mobile App is a free to use mobile application for programming a NX Connect System. The mobile App allows you to discover, configure and share your NX Connect system.



Apple iOS

## CONTROLS OPTIONS AND FUNCTIONALITY (CONTINUED)

### SpectraSync™ Color Tuning Technology:

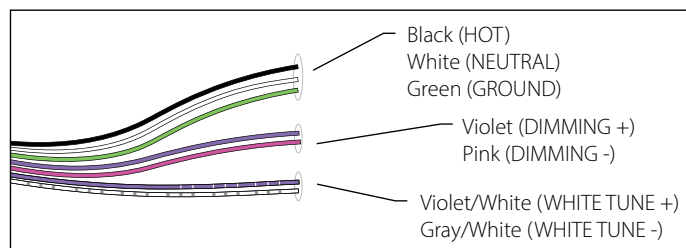
Control your space based on the needs of the application, specific activities throughout the day and preferences of the occupants with distinct SpectraSync™ Color Tuning Technologies.



SPECTRASync COLOR TUNING TECHNOLOGY		
Mode	Kelvin Range	Description
Dim to Warm	2200K–3000K	Mimics the familiar warming effect that occurs with traditional incandescent sources as they are dimmed
Tunable White	2700K–6500K	Offers users the ability to tailor CCT to their personal preference, enhancing task visibility, material and colors or the aesthetics of the space
Scheduled White	2700K–6500K	Mimics the rhythm of natural light or follows an alternative user-defined schedule throughout the day, enhancing an occupant's mood and well-being

### SpectraSync Tunable White

Available in 2765T (2700K–6500K). Requires two 0–10V controllers, one for intensity and one for CCT. Minimum 5% dimming.

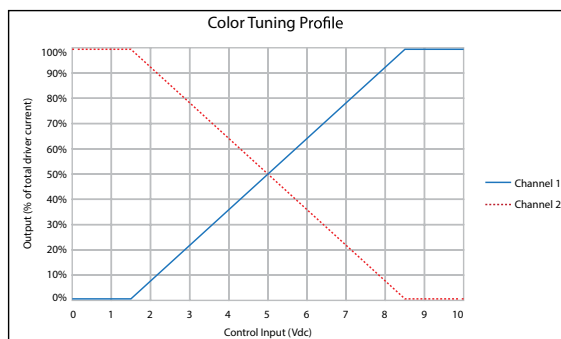


SpectraSync Tunable White luminaires are provided with two 0–10V circuits. The violet and pink circuit is for wiring to any qualified 0–10V controller for dimming. The violet/white and gray/white circuit is for wiring to any qualified 0–10V controller for Tunable White CCT control.

### Controller Manufacturer Data

SpectraSync Tunable White was designed to be used with sinking style dimmers (provided by others) and is compatible with:

- Current: NX Lighting Controls Room Controllers (NXRC) and In-fixture Controllers (NXFM)
- Lutron: DDTV, DVSTV, and NFTV dimmers
- Wattstopper: ADF120277 and CD4BL (Titan) dimmers



# 6L-WS-D

MOD™ 6 LED WALL/SLOT DIRECT

DATE:	LOCATION:
TYPE:	PROJECT:
CATALOG #:	

## PERFORMANCE DATA TABLE

The table below shows the delivered lumens for the various lumen outputs. Use this chart in connection with the output multiplier capability to deliver any output required.

Nomenclature	Lumens/Ft	W/Ft	Efficacy
<b>Downlight</b>			
D030 (min)	300	2.6	118
D035	350	3.0	118
D040	400	3.4	118
D045	450	3.8	118
D050	500	4.2	118
D055	550	4.7	117
D060	600	4.8	117
D065	650	5.6	116
D070	700	6.1	116
D075	750	6.5	115
D080	800	7.0	113
D85	850	7.5	113
D090	900	7.9	113
D095	950	8.5	112
D100	1000	9.0	112
D105	1050	9.4	111
D110	1100	10.0	110

(wattage may vary up to 5% from published)

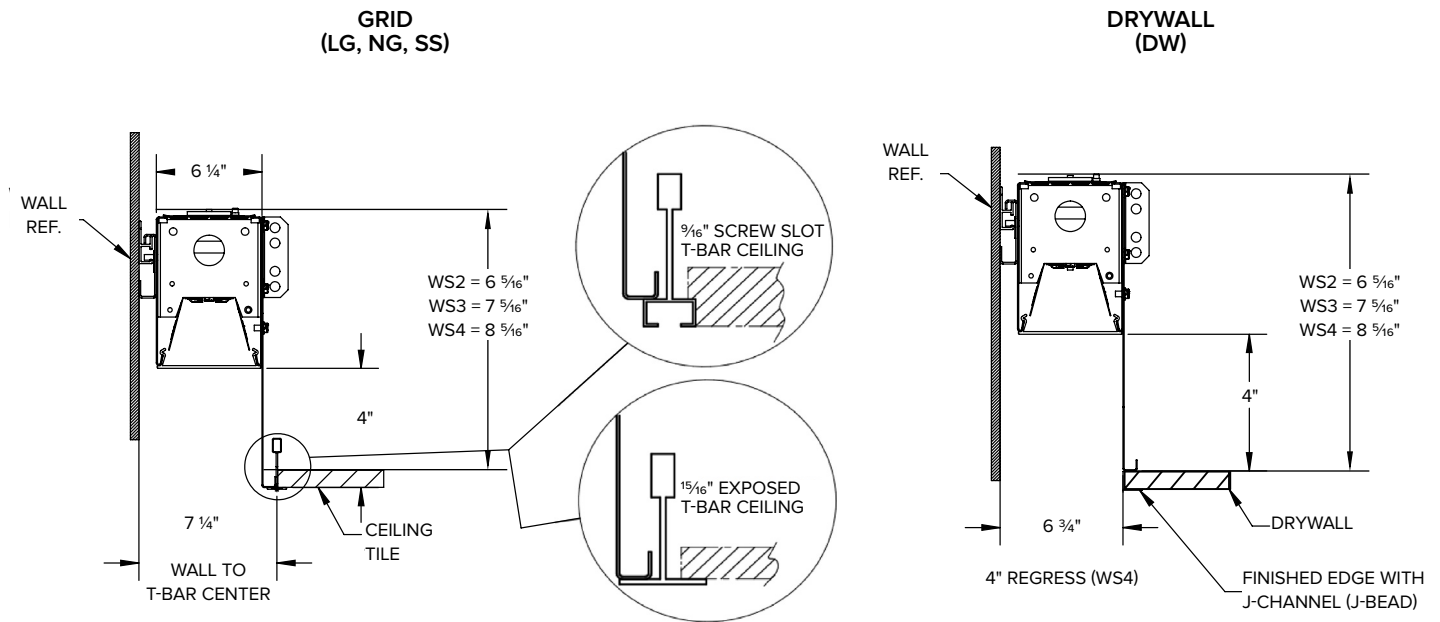
## Output Multiplier Table

Photometrics for the MOD Family are published here at a nominal 3500K temperature. This table may be used to approximate the lumen values at different Kelvin temperatures. Power consumption would stay the same.

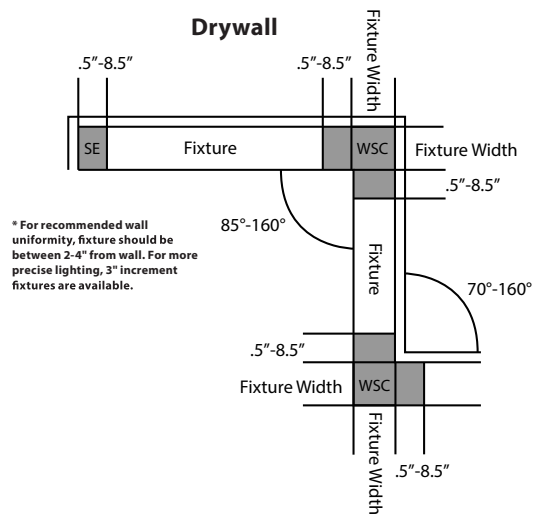
Option	2700K 90 CRI	3000K 90 CRI	3500K 90 CRI	4000K 90 CRI	5000K 90 CRI
SOF	0.89	0.96	1.00	1.00	0.99
REG	0.69	0.74	0.77	0.77	0.76
BWO	0.62	0.67	0.70	0.70	0.69
ASYM	0.89	0.96	1.00	1.00	0.99
BAT	0.89	0.96	1.00	1.00	0.99
DRP	0.89	0.96	1.00	1.00	0.99
LPAD	0.80	0.86	0.90	0.90	0.89

DATE:	LOCATION:
TYPE:	PROJECT:
CATALOG #:	

## DIMENSIONS



## INDIVIDUAL MOUNTING



## PATTERNS

PHOTOMETRY

6L-R-D-04-SOF-X-CX-35K9-D100

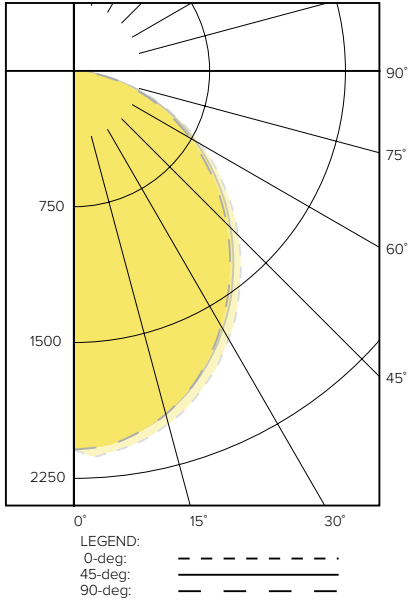
LUMINAIRE DATA

Description	6L Wall/Slot Direct, Soft Diffuse Lens, 3500K
Delivered Lumens	4000
Watts	
Efficacy	118
Mounting	Wall

ZONAL LUMEN SUMMARY

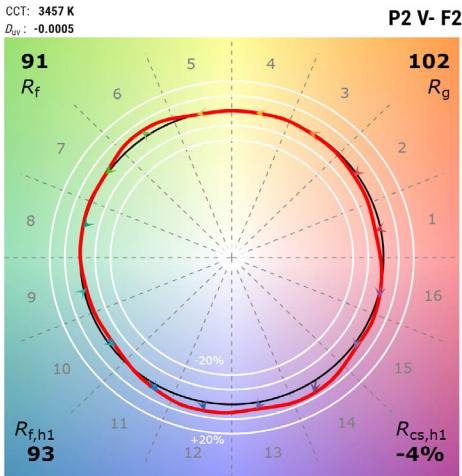
Zone	Lumens	% Luminaire
0-40	1884.30	47.10
0-60	3205.40	80.10
0-90	3999.70	100.00
0-180	4000.30	100.00

POLAR GRAPH



TM-30 DATA

COLOR VECTOR GRAPHIC



\*Graphics shown are at 35K

# 6L-WS-D

MOD™ 6 LED WALL/SLOT DIRECT

DATE:	LOCATION:
TYPE:	PROJECT:
CATALOG #:	

## ADDITIONAL INFORMATION

### Driver

D01	100%- 1% dimming range. Fixture will be wired for low voltage 0-10V dimming control.
D00	Dim-to-Off 100%-1% dimming range. Fixture will be wired for low voltage 0-10V dimming control.
D05	100%-5% dimming range. Fixture will be wired for low voltage 0-10V dimming control. Only applicable if either 2230TD, 2750T or 2765T is selected.
DS1	Soft-Start 100%-1% dimming range. Fixture will be wired for low voltage 0-10V dimming control.
DS0	Soft-Start Dim-to-Off 100%-1% dimming range. Fixture will be wired for low voltage 0-10V dimming control.
LEC	Hi-Lume 1% EcoSystem LED Driver with Soft-On, Fade-to-Black dimming technology.
DALI	DALI compatible.
DALIP	Self-Powered DALI bus (e.g. DEXAL)
NDM	Non-dimming. Fixture will be wired for fixed light output.

### Rated Life

Tested in accordance to LM79-2008 & derived from EPA TM-21 calculator

L70: 280,000 (calculated per TM-21 extrapolated curve)

L70: >61,000 (reported per TM-21/LM80 6x's limitation)

L90: 72,000 (calculated per TM-21 extrapolated curve)

L90: >61,000 (reported per TM-21/LM80 6x's limitation)

### Rated Life (Driver)

Standard = 100,000 hours

Lutron = 50,000 hours