



CUSTOMER NAME _____

Project Name _____

Date _____ Type _____

Catalog Number _____

Albeo® PHB Series

Selectable Lumen & CCT Linear High Bay

The **Albeo® PHB Series** Linear High Bay offers the right combination of options in each stocked SKU to satisfy your job needs. With 120-347V, selectable lumens and CCT, field-installable sensors, and mounting accessories, the PHB is the ideal solution for a wide range of industrial and commercial applications up to 39 ft. mounting heights.



CONSTRUCTION

Housing:	Die-cast Aluminum
Lens:	Diffused Polycarbonate
Weight:	Size 1X: 4.6 lbs (2.1 kg)
	Size 2X: 7.7 lbs (3.5 kg)

PERFORMANCE

Distribution:	Narrow**, Medium, and Wide**
Lumens:	1X: Selectable 16,000 / 19,000 / 22,000 2X: Selectable 27,000 / 32,000 / 36,000
Efficacy:	Up to 161 LPW
CCT:	Selectable 3500K / 4000K / 5000K
CRI:	80

** Available as field installed accessories

ELECTRICAL

Input Voltage:	120-347V
Input Frequency:	50/60 Hz
Power Factor (PF)*:	>90%*
Total Harmonic Distortion (THD)*:	>20*
Color Rendering Index	>80
EMI:	FCC CFR Title 47 Part 15, Class A
LED Driver Type:	6kV surge protection

* PF and THD may vary with options

CONTROLS

Sensors:	Field installable PIR Occupancy Sensor
Dimming:	0-10V Dimming to 10%

LUMINAIRE AMBIENT TEMPERATURE

TEMPERATURE RATE
-40°C to +50°C (-40°F to 122° F)

LUMEN MAINTENANCE

LXX(10K) @ Hours
100,000 HR
L70

ADDITIONAL FEATURES

- **Typical Mounting:** Each fixture comes standard with 3' chain and v-hooks included in the box.
- Surface and pendant mount accessories available
- Optional sensor remote accessory allows daylight and dimming sensor capabilities to be enabled and programmed

DESIGN LIFE & WARRANTY

- **Reliability Testing:** Components and/or systems evaluation at extreme conditions and monitored during production
- UL 1598 to US and Canadian Standards Suitable for Damp Locations
- **Current's Limited 5-year Warranty:**
See Product Warranties section at led.com/resources



STOCK GUIDE

SIZE	SKU	CATALOG NUMBER	DESCRIPTION
1X	93321607	PHB1X08MQVSTKQW	120-347V Medium Distribution
			16/19/ 22K Lumen Selectable
			35/ 40 /50 CCT Selectable
2X	93321608	PHB12X08MQVSTKQW	120-347V Medium Distribution
			27/32/ 36K Lumen Selectable
			35/ 40 /50 CCT Selectable

Default settings in bold.

MOUNTING AND ACCESSORY OPTIONS (ORDER SEPARATELY)

ORDER SKU #	IMAGE	DESCRIPTION	
<input type="checkbox"/> 93321614		ILH Surface Mount Kit 1. Kit can be used on either size. 2. Not compatible with fixtures that have battery pack installed	
<input type="checkbox"/> 93321615		ILH Pendant Mount Kit 1. Kit can be used on either size. 2. Not compatible with fixtures that have battery pack installed.	
<input type="checkbox"/> 93321609		ILH WG1 - Wire Guard Size 1	
<input type="checkbox"/> 93321613		ILH WG2 - Wire Guard Size 2	
<input type="checkbox"/> 93321617		ILH-1 90D Lens - Medium Lens Size 1	
<input type="checkbox"/> 93321620		ILH-2 90D Lens - Medium Lens Size 2	
<input type="checkbox"/> 93321618		ILH-1 110D Lens - Wide Lens Size 1	
<input type="checkbox"/> 93321621		ILH-2 110D Lens - Wide Lens Size 2	
<input type="checkbox"/> 93321616		ILH-1 65D Lens - Narrow Lens Size 1	
<input type="checkbox"/> 93321619		ILH-2 65D Lens - Narrow Lens Size 2	
<input type="checkbox"/> 93161798			HB03DPR - Plug and Play Sensor Easy plug-and-play install to front face of fixture. Sensor requires remote if programming is desired.
<input type="checkbox"/> 93161799			HB03DPR - Sensor Remote Remote allows default settings to be changed. Remote allows daylight and dimming sensor capabilities to be enabled and programmed.
<input type="checkbox"/>		93075756G Y-CBL-KIT-5FT - 5ft Y-Cable Kit	
		93075552G Y-CBL-KIT-10FT - 10ft Y-Cable Kit	
		93075553G Y-CBL-KIT-15FT - 15ft Y-Cable Kit	
		93075554G Y-CBL-KIT-20FT - 20ft Y-Cable Kit	
		Y- Cable/ Hooks (Pair) 1. To be installed using V clips included with each fixture. Only requires (1) Y-Cable Hook per fixture.	



Albeo® PHB Series

Selectable Lumen & CCT Linear High Bay

CUSTOMER NAME _____

Project Name _____

Date _____ Type _____

Catalog Number _____

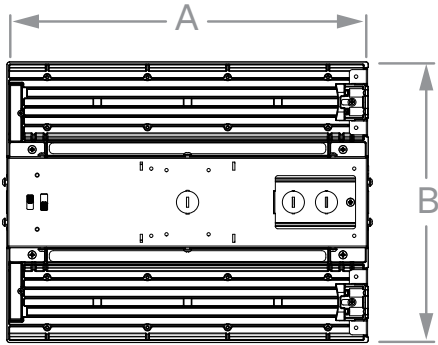
DELIVERED LUMENS

SKU/CATALOG NUMBER	UPC	SIZE/ DISTRIBUTION	INPUT POWER (W)	LUMEN FLUX (LM)	EFFICACY (LPW)	CCT(K)
93321607 PHB11X08MQVSTKQW	840141439518	PHB Size 1X Medium Distribution	110	15500	138	3500
			108	16500	151	4000
			110	16200	146	5000
			130	17800	136	3500
			127	19200	150	4000
			130	18400	142	5000
			150	20000	132	3500
			145	22000	148	4000
			150	21000	138	5000
93321608 PHB12X08MQVSTKQW	840141439525	PHB Size 2X Medium Distribution	1800	26000	145	3500
			176	27400	155	4000
			180	26800	149	5000
			220	30800	140	3500
			214	32800	154	4000
			220	31700	144	5000
			255	34500	135	3500
			245	36500	150	4000

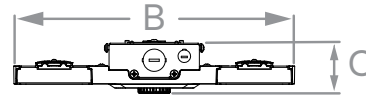
DIMENSIONS

Size 1X

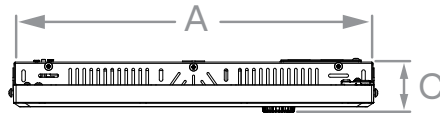
Bottom View



End View



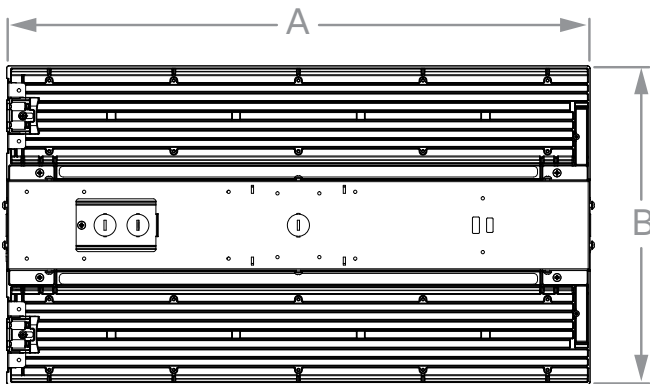
Side View



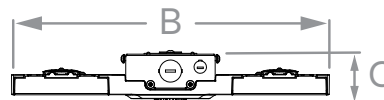
SIZE	LENGTH (A)	WIDTH (B)	HEIGHT (C)
1X	14.2" (361mm)	11.02 (280mm)	2.05" (52mm)
2X	23.05" (585mm)	12.60" (320mm)	

Size 2X

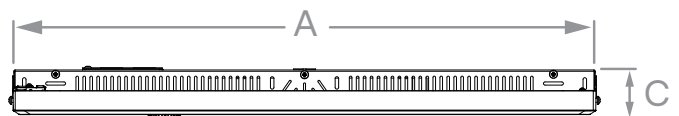
Bottom View



End View



Side View

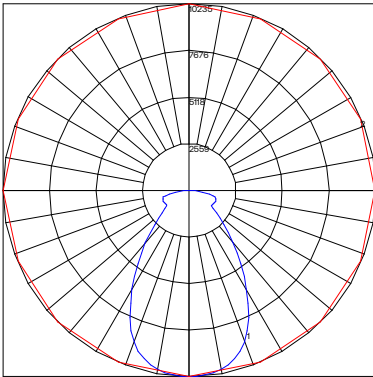


PHOTOMETRIC DATA

SIZE 1X NARROW DISTRIBUTION

Settings @22K Lumen,
3500K CCT

POLAR GRAPH
REF 25.00520

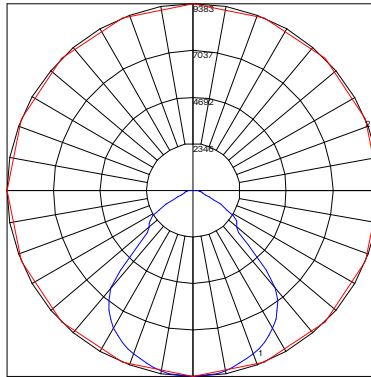


Maximum Candela = 10235 Located At Horizontal Angle = 90, Vertical Angle = 2.5
1 - Vertical Plane Through Horizontal Angles (90 - 270) (Through Max. Cd.)
2 - Horizontal Cone Through Vertical Angle (2.5) (Through Max. Cd.)

SIZE 1X MEDIUM DISTRIBUTION

Settings @22K Lumen,
3500K CCT

POLAR GRAPH
REF 25.00523

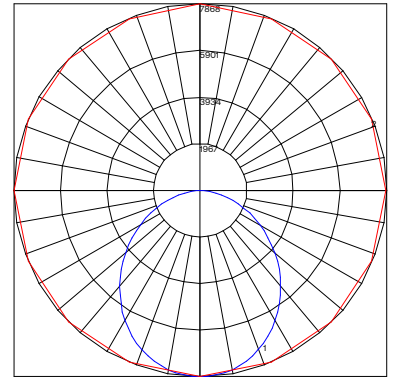


Maximum Candela = 9383 Located At Horizontal Angle = 0, Vertical Angle = 0
1 - Vertical Plane Through Horizontal Angles (0 - 180) (Through Max. Cd.)
2 - Horizontal Cone Through Vertical Angle (0) (Through Max. Cd.)

SIZE 1X WIDE DISTRIBUTION

Settings @22K Lumen,
3500K CCT

POLAR GRAPH
REF 25.00526

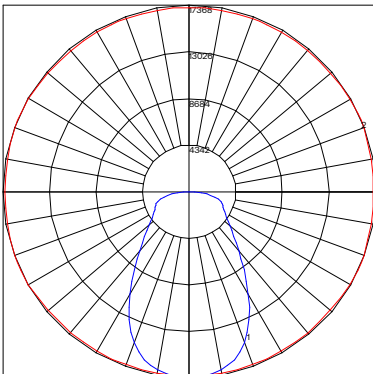


Maximum Candela = 7868 Located At Horizontal Angle = 90, Vertical Angle = 2.5
1 - Vertical Plane Through Horizontal Angles (90 - 270) (Through Max. Cd.)
2 - Horizontal Cone Through Vertical Angle (2.5) (Through Max. Cd.)

SIZE 2X NARROW DISTRIBUTION

Settings @36K Lumen,
3500K CCT

POLAR GRAPH
REF 25.00133

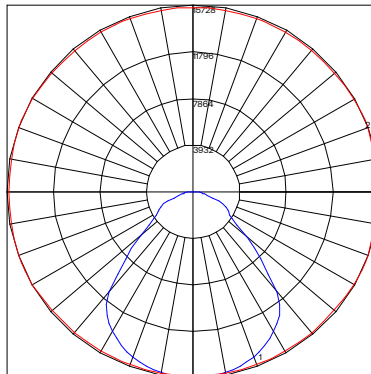


Maximum Candela = 17368 Located At Horizontal Angle = 25, Vertical Angle = 2.5
1 - Vertical Plane Through Horizontal Angles (25 - 205) (Through Max. Cd.)
2 - Horizontal Cone Through Vertical Angle (2.5) (Through Max. Cd.)

SIZE 2X MEDIUM DISTRIBUTION

Settings @36K Lumen,
3500K CCT

POLAR GRAPH
REF 25.00136

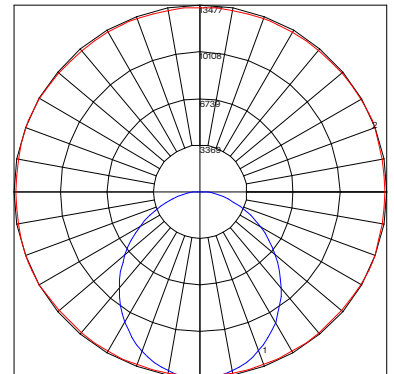


Maximum Candela = 15728 Located At Horizontal Angle = 25, Vertical Angle = 2.5
1 - Vertical Plane Through Horizontal Angles (25 - 205) (Through Max. Cd.)
2 - Horizontal Cone Through Vertical Angle (2.5) (Through Max. Cd.)

SIZE 2X WIDE DISTRIBUTION

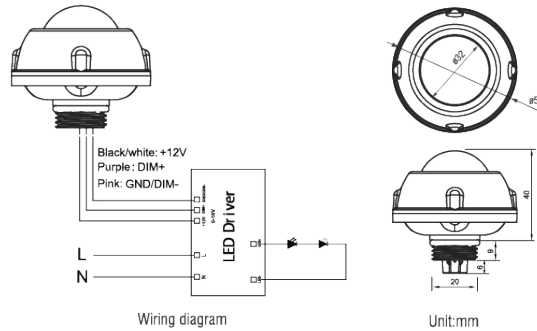
Settings @36K Lumen,
3500K CCT

POLAR GRAPH
REF 25.00139



Maximum Candela = 13477 Located At Horizontal Angle = 25, Vertical Angle = 2.5
1 - Vertical Plane Through Horizontal Angles (25 - 205) (Through Max. Cd.)
2 - Horizontal Cone Through Vertical Angle (2.5) (Through Max. Cd.)

HBO3DPR MOTION SENSOR ACCESSORY



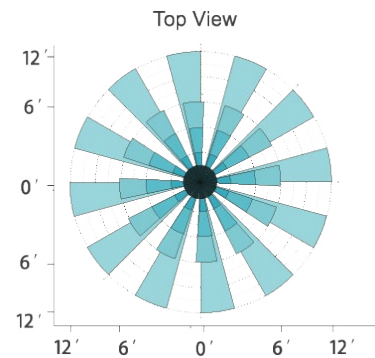
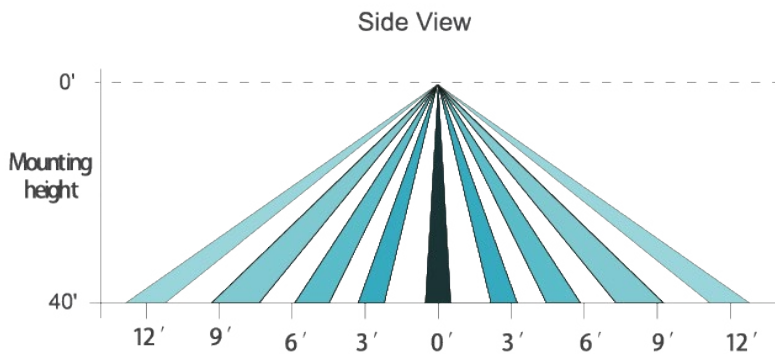
TECHNICAL DATA	
Operating Voltage:	12±2V DC
Operating Current	30mA
Output:	DIM 0-10V
Stand-by Power:	<0.5W
Brightness:	0%-100% Quick Setting: 70%/80%/90%/100%
Hold Time:	10s/1min/10min/30min
Daylight Threshold:	10Lux/30Lux/50Lux/100Lux/Disable
Stand-by Time:	1min/30min/60min + ∞

TECHNICAL DATA	
Stand-by Dimming Level:	10%/20%/30%/50%
Detection Angle:	≤120° (wall mounted), 360° (Ceiling mounted)
Mounting Height:	≤12m/39.37ft (Ceiling mounted)
Detection Range:	Radius, 2-4m/6.58-13.12ft (Ceiling mounted)
Operating Temperature:	-30°C--+60°C
IP Rating:	IP65 (Mounted on the light fixture)
Warm-up Period	50S

Note: Default setting - Brightness: 100%, Hold time: 1min, Stand-by dimming level: 20%, Stand-by time: 1min, Sensitivity: 100% (non-adjustable) Daylight: Disable.

DETECTION COVERAGE

This figure indicates the maximum distance at the highest mounting height with 100% sensitivity.



LUX ON/OFF

Adopted dual PD technology, PRC Motion Sensor is able to differentiate artificial light brightness from natural light after installed inside the fixture, and automatically turn off light when ambient brightness exceeds preset lux level.

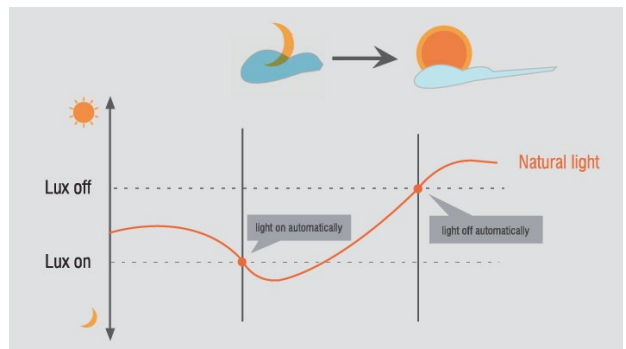
Preconditions to use the Lux-off function:

Stand-by time is + ∞

Stand-by dimming level is on 10%, 20%, 30%, or 50%

Daylight threshold is on 10Lux, 30Lux, 50Lux, or 100Lux

(About 20% error between actual and reference values).



HBO3DPR-REMOTE



DISPLAY AREA

Brightness (70%, 80%, 90%, 100%)
 Daylight (10%, 30%, 50%, 100%)
 Standby Dim (10%, 20%, 30%, 50%)

Hold Time (10s/1min/10min/30min)
 Sensitivity (20%, 50%, 75%, 100%)
 Standby Time (+ ∞ 1min/30min/60min)

BUTTON SETTING AREA

On/Off (Long press the "On/Off" button until the brightness indicator light is on (First-row). Press to turn on or turn off the fixture.)

Brightness (Press to adjust dimming level 70%, 80%, 90%, 100%)

Standby Dim (10%, 20%, 30%, 50%)

Send (Press to save settings after each change. The indicator light confirms the save setting.)

Hold Time (Press to adjust hold time 10s/1min/10min/30min.)

Daylight (Long press the button until the daylight indicator light is on press to adjust daylight threshold 10%, 30%, 50%, 100%)

Sensitivity (Press to adjust sensitivity 20%, 50%, 75%, 100%) Note: PIR Motion Sensor have no sensitivity setting, the default 100%.)

Standby Dim (Press to adjust stand-by time + ∞ 1min/30min/60min). Note: "+ ∞" means unlimited stand-by time, and the light control mode is the light control priority mode, otherwise it's the light threshold mode.

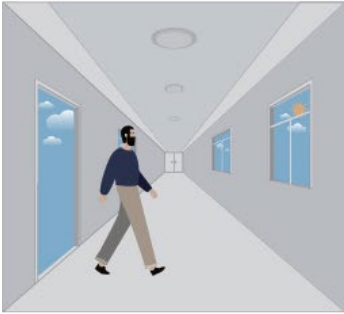
Reset (Press "Reset" button, products with DIP switch will be controlled by DIP switches; Otherwise all the setting will change, which is Brightness 70%/Hold time 10s/Sensitivity 20%/ Daylight threshold disable/Stand-by dimming level 10%/ Stand-by time + ∞)

Test (The button "Test" is for testing purpose after debugging. Pressing this button, the sensor goes to test mode (Hold time is only 3S).)

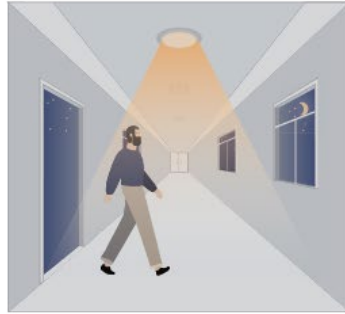
Press to increase brightness (0-100%)

Press to reduce brightness (100%-0%)

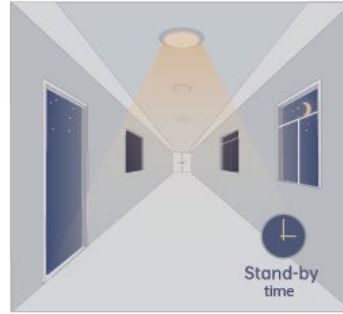
1. AUTOMATIC ON/OFF FUNCTION



With sufficient daylight, even when motion is detected, light will remain **OFF**.



With insufficient daylight, the sensor turns light **ON** when motion gets detected.



Light dims to stand-by level if no motion detected after hold time.



Light **OFF** when ambient lux level is higher than preset lux amount.

2. CORRIDOR FUNCTION, BI-LEVEL DIMMABLE



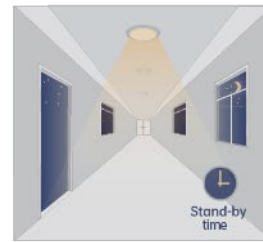
With sufficient daylight, the sensor keeps light **OFF** even motion gets detected, daylight function is on.



With insufficient daylight, the sensor turns light **ON** when motion gets detected.



After there's no motion detected, the sensor keeps light **ON** brightness setting for hold time.

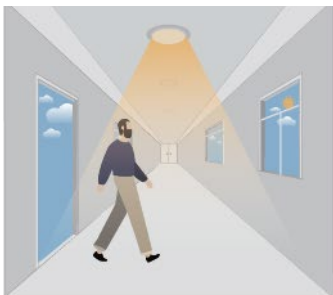


After holdtime, sensor dims light to stand-by dimming level for stand-by time.



The sensor turns **OFF** light automatically after the stand-by time when there's no motion detected.

3. DAYLIGHT DISABLE



The sensor turns light **ON** when motion gets detected.



The sensor keeps light **ON** for hold time after motion leaves.



After hold time, sensor dims light to stand-by dimming level for stand-by time.



The sensor turns **OFF** light automatically after the stand-by time when there's no motion detected.