



CUSTOMER NAME _____

Project Name _____

Date _____ Type _____

Catalog Number _____

PRC Series

LED IP65 Selectable Round High Bay

The **Albeo® PRC Series** is an NSF and IP65 rated wet location round high bay with an exceptional mixture of value and performance. Offering universal 120-347V, selectable lumens and CCT, field-installable sensors and accessories, the PRC is the ideal solution for a wide range of industrial and commercial applications including: food and beverage processing, commercial kitchens, cold storage and manufacturing facilities

CONSTRUCTION

Housing:	Die-cast Aluminum
Lens:	Clear Polycarbonate (90°)
Paint:	Powder coat painted housing No glass in housing or lenses
Weight:	6.5–9.5lbs (2.95–4.30kg)
Optical Assembly:	Optional polycarbonate refractor, drop lens, or aluminum reflector

OPTICAL SYSTEM

Lumens:	1X: Selectable 15,000 / 18,000 / 21,000 2X: Selectable 24,000 / 30,000 / 34,000
Wattage:	100–240W
Efficacy:	Up to 160 LPW
CCT:	Selectable 4000K / 5000K
CRI:	80
Glare Rating:	UGR<28

ELECTRICAL

Input Voltage:	120-277V or 120-347V
Input Frequency:	50/60Hz
Power Factor (PF)*:	>0.9*
Total Harmonic Distortion (THD)*:	<20%*
EMI:	FCC CFR Title 47 Part 15, Class A
Surge Protection:	6KV surge protection

* PF and THD may vary with options

CONTROLS

Dimming:	0-10V Dimming to 10%
Sensors:	Field installable Sensor (see page 9 for specs)

LUMINAIRE AMBIENT TEMPERATURE

TYPE	TEMPERATURE RATE
OPERATING TEMP.	With Sensor: –30°C to 50°C Without Sensor: –40°C to 50°C
STORAGE TEMP.	With Sensor: –30°C to 70°C Without Sensor: –40°C to 70°C

LUMEN MAINTENANCE

LXX (10K) @ HOURS
50,000 HR
L70

MOUNTING

- **Typical Mounting:** ½" NPT hook included. Wall mount bracket and safety tether may be ordered separately
- **Cord:** 6ft cord included (pre-installed)
- Optional sensor remote accessory allows daylight and dimming sensor capabilities to be enabled and programmed

ADDITIONAL NOTES

- UL 1598 to US and Canadian standards
- Suitable for wet locations
- IP65 and NSF Splash Zone rated
- NEMA 250 Type 4X rated

DESIGN LIFE & WARRANTY

- **Current's Limited 5-year Warranty:**
See Product Warranties section at led.com/resources





PRC Series

LED IP65 Selectable Round High Bay

CUSTOMER NAME _____

Project Name _____

Date _____ Type _____

Catalog Number _____

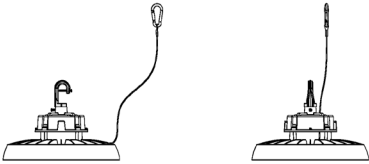



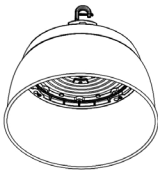
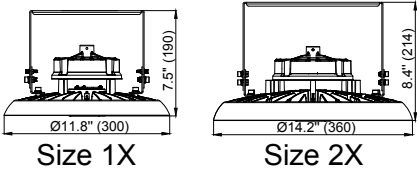
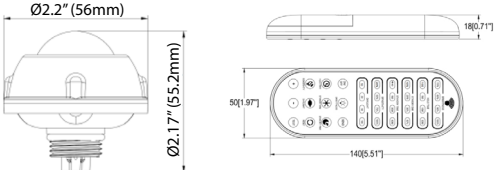

Ordering Information

PRC			08	8L	QV	ST	A	Q	B
---	-	--	--	--	--	--	-	-	-
PRODUCT ID	VOLTAGE	SIZE/LUMENS	CCT/CRI	OPTICS	CONTROLS	MOUNTING	CORD	PLUG	FINISH
PRC	0 = 120-277V 1 = 120-347V	1X = Selectable 15/18/21K 2X = Selectable 24/30/34K	08 = Selectable 4000K/5000K (80 CRI)	8L = 90° lens	QV = 0-10V Dimming Controls Ready	ST = Hook Additional mounting accessories available	A = 6ft cord	Q = None	B = Black

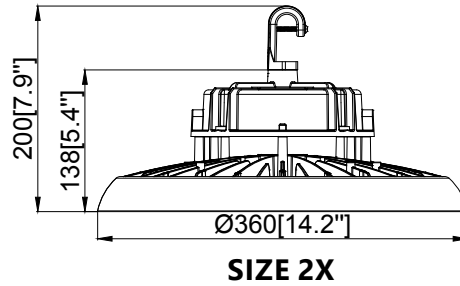
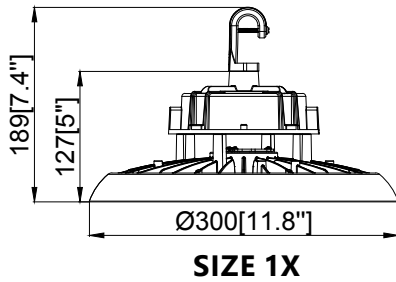
SKU	CAT LOGIC	VOLTAGE	SIZE/LUMENS	TYPICAL DELIVERED LUMENS	WATTS	TYPICAL LPW (120-277V)	MAX AMBIENT TEMP (°C)
93157612G	PRC02X088LQVSTAQB	120-277V	2X	24,000	150	160	50°C
		120-277V	2X	30,200	200	151	50°C
		120-277V	2X	34,320	240	143	50°C
		120-347V	1X	15,500	100	155	50°C
93307172	PRC11X088LQVSTAQB	120-347V	1X	18,360	120	153	50°C
		120-347V	1X	21,300	150	142	50°C
		120-347V	2X	24,000	150	160	50°C
		120-347V	2X	30,200	200	151	50°C
93307173	PRC12X088LQVSTAQB	120-347V	2X	34,320	240	143	50°C

OPTICAL LENS ACCESSORY	OPTIC DESCRIPTION	OUTPUT MULTIPLIER
Refractor	Polycarbonate Refractor/Drop Lens	98%, 93% w/Drop Lens
Reflector	Aluminium Reflector	90%

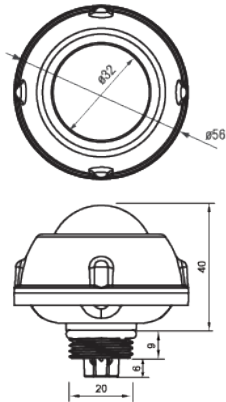
FIELD-INSTALLABLE MOUNTING AND ACCESSORY OPTIONS

MOUNTING/ACCESSORY OPTIONS	IMAGE	ORDER SKU#	DIMENSIONS/NOTES
Safety Tether (optional)		Size 1X & 2X: 93159859G Min Order Quantity = 10	Cable length: 1m (39.4 in.) Cable Diameter: 2mm(.08 in.)
Wire Guard (optional)		Size 1X: 93159853G Size 2X: 93159854G Min Order Quantity = 10	Size 1X: H 4.8cm (1.9 in.); Dia 26.1 cm (10.2 in.) Size 2X: H 5.2cm (2 in.); Dia 31.5cm (12.4 in.)
90° Polycarbonate Refractor (optional)		Size 1X: 93159838G Size 2X: 93159839G Min Order Quantity = 1	Size 1X: H 16cm (6.3 in.); Dia 41cm (16.1 in.) Size 2X: H 16cm (6.3 in.); Dia 41cm (16.1 in.)
Polycarbonate Drop Lens (optional)		Size 1X & 2X: 93159840G Min Order Quantity = 1	Drop lens adds: H 4cm (1.6 in.)
90° Aluminum Reflector (optional)		Size 1X: 93159851G Size 2X: 93159852G Min Order Quantity = 5	Size 1X: H 16.1cm (6.3 in.); Dia 42cm (16.5 in.) Size 2X: H 18.2cm (7.1 in.); Dia 47.3cm (18.6 in.)
Wall Mount Bracket (optional)		Size 1X: 93159855G (HD03DPR) Size 2X: 93159856G (HB03DPR-Remote) Min Order Quantity = 10	Total Height of assembly from top of bracket to bottom of fixture: Size 1X: 15cm (5.9 in.) Size 2X: 17cm(6.7 in.)
PIR Sensor -New (optional)		Sensor: 93159862G Remote: 93159857G Min Order Quantity = 1	Notes: 1. Easy plug-and-play install to center face of fixture; maintains IP65 rating 2. Sensor requires remote if programming is desired 3. HB03DPR sensor is not compatible with 40W emergency battery
40W Emergency Battery		93161800	Dimensions: H: 10.78"; W: 5.57" Notes: 1. 120-277V only 2. 40W emergency battery is not compatible with HB03DPR sensor

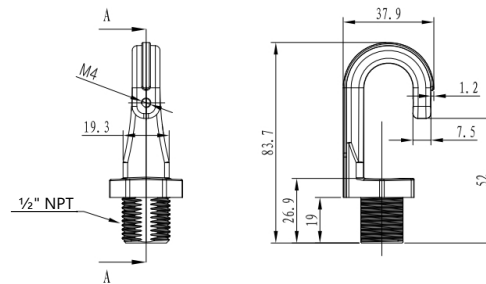
DIMENSIONS



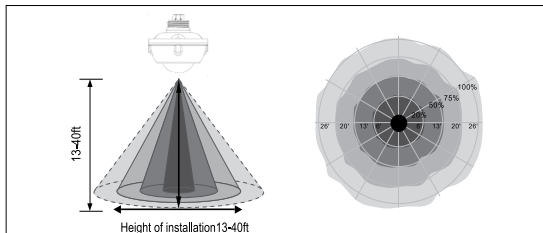
FIELD-INSTALLABLE SENSOR



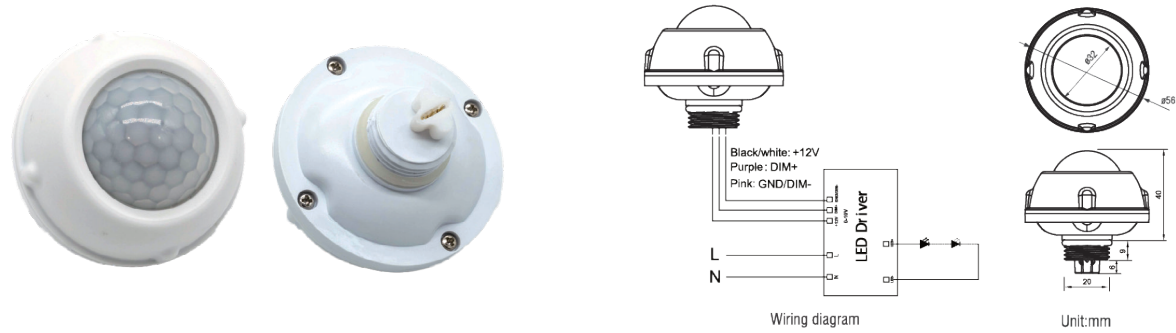
HOOK (1/2" NPT), INCLUDED



SENSOR COVERAGE



HD03DPR MOTION SENSOR ACCESSORY SPECIFICATIONS



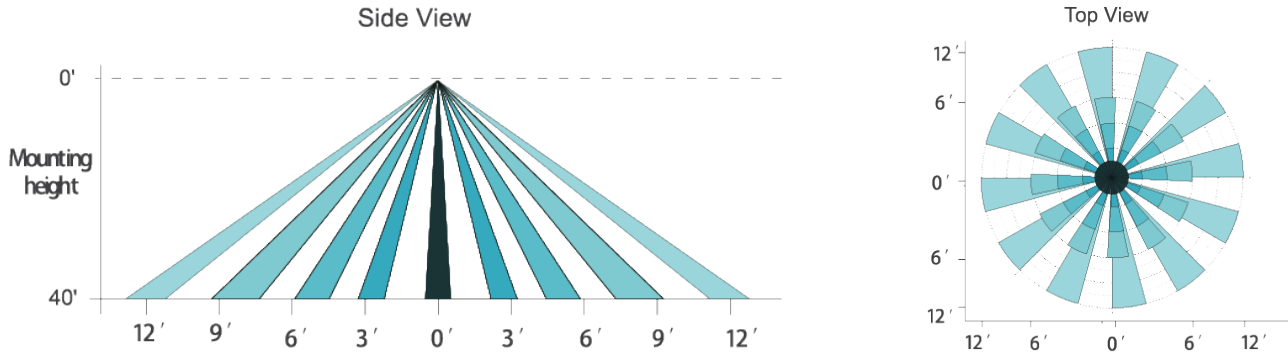
TECHNICAL DATA

Operating Voltage:	12±2V DC
Operating Current	30mA
Output:	DIM 0-10V
Stand-by Power:	<0.5W
Brightness:	0%-100% Quick Setting: 70%/80%/90%/100%
Hold Time:	10s/1min/10min/30min
Daylight Threshold:	10Lux/30Lux/50Lux/100Lux/Disable
Stand-by Time:	1min/30min/60min + ∞
Stand-by Dimming Level:	10%/20%/30%/50%
Detection Angle:	≤120° (wall mounted), 360° (Ceiling mounted)
Mounting Height:	≤ 12m/39.37ft (Ceiling mounted)
Detection Range:	Radius, 2-4m/6.58-13.12ft (Ceiling mounted)
Operating Temperature:	-30°C~+60°C
IP Rating:	IP65 (Mounted on the light fixture)
Warm-up Period	50S

Note: Default setting - Brightness: 100%, Hold time: 1min, Stand-by dimming level: 20%, Stand-by time: 1min, Sensitivity: 100% (non-adjustable) Daylight: Disable.

Detection Coverage

This figure indicates the maximum distance at the highest mounting height with 100% sensitivity.

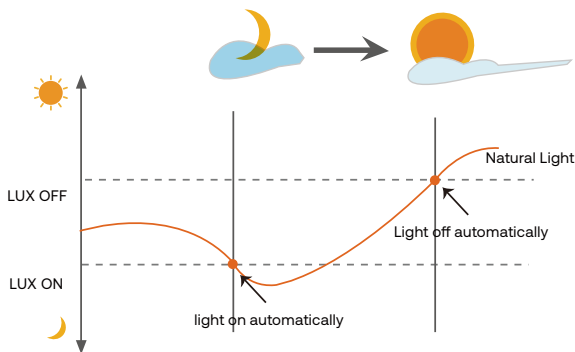


Lux on/off

PRC Sensor is able to differentiate artificial light brightness from natural light after installed inside the fixture, and automatically turn off light when ambient brightness exceeds preset lux level.

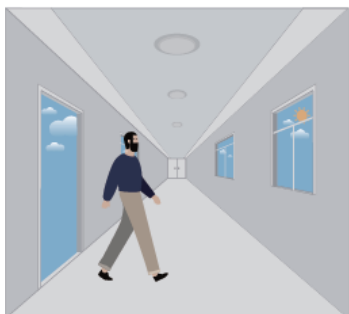
Preconditions to use the Lux-off function:

1. Stand-by time is $+\infty$
2. Stand-by dimming level is on 10%, 20%, 30%, or 50%
3. Daylight threshold is on 10Lux, 30Lux, 50Lux, or 100Lux (About 20% error between actual and reference values).

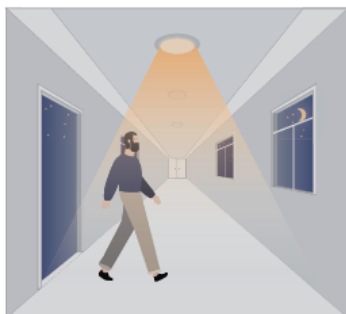


Performance

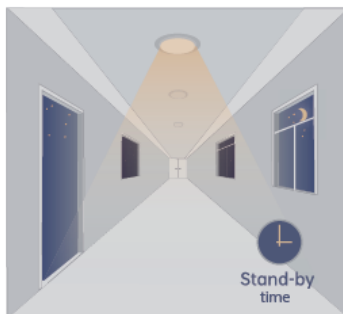
1. AUTOMATIC ON/OFF FUNCTIOIN



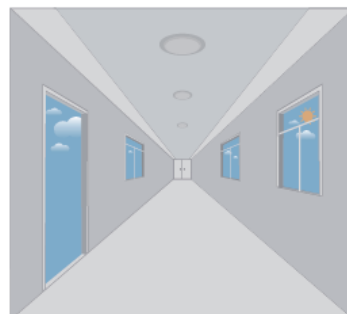
With sufficient daylight, even when motion is detected, light will remain OFF.



With insufficient daylight, the sensor turns light ON when motion gets detected.

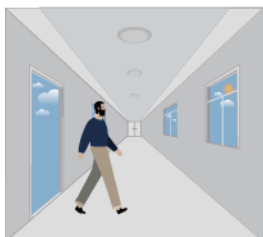


Light dims to stand-by level if no motion detected after hold time.

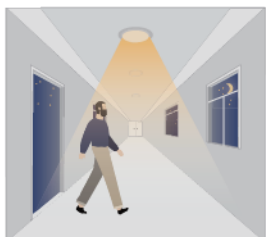


Light OFF when ambient lux level is higher than preset lux amount.

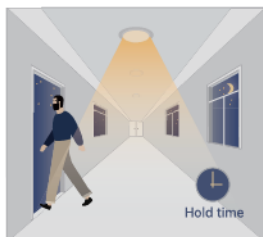
2. CORRIDOR FUNCTION, BI-LEVEL DIMMABLE



With sufficient daylight, the sensor keeps light OFF even motion gets detected, daylight function is on.



With insufficient daylight, the sensor turns light ON when motion gets detected.



After there's no motion detected, the sensor keeps light ON brightness setting for hold time.

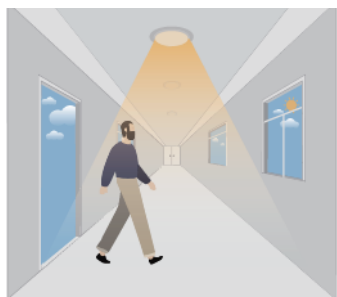


After holdtime, sensor dims light to stand-by dimming level for stand-by time.

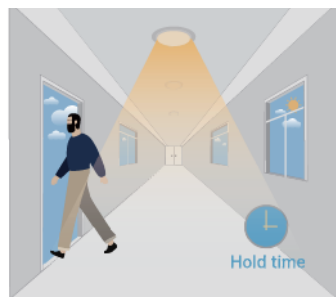


The sensor turns OFF light automatically after the stand-by time when there's no motion detected.

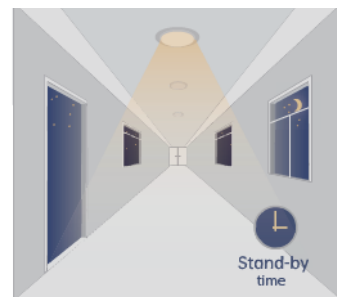
3. DAYLIGHT DISABLE



The sensor turns light ON when motion gets detected.



The sensor keeps light ON for hold time after motion leaves.



After hold time, sensor dims light to stand-by dimming level for stand-by time.



The sensor turns OFF light automatically after the stand-by time when there's no motion detected.

HB03DPR-REMOTE















Display Area

BRIGHTNESS (70%/80%/90%/100%)
 DAYLIGHT (10lx/30lx/50lx/100lx)
 STANDBY DIM (10%/20%/30%/50%)

HOLD TIME (10S/1min/10min/30min)
 SENSITIVITY (20%/50%/75%/100%)
 STANDBY TIME (+ ∞ /1min/30min/60min)

Button Setting Area

-  **ON/OFF** (Long press the "ON/OFF" button until the brightness indicator light is on(First-row),Press to turn on or turn off the fixture.)
-  **BRIGHTNESS** (Press to adjust dimming level 70%/80%/90%/100%.)
-  **SEND** (Press to save settings after each change.The indicator light confirms the save setting.)
-  **HOLD TIME** (Press to adjust hold time 10s/1min/10min/30min.)
-  **DAYLIGHT** (Long press the button until the daylight indicator light is on,press to adjust daylight threshold 10lx/30lx/50lx/100lx.)
-  **SENSITIVITY** (Press to adjust sensitivity 20%/50%/75%/100%.) Note: PIR Motion Sensor have no sensitivity setting,the default 100%.
-  **STANDBY DIM** (Press to adjust stand-by dimming level 10%/20%/30%/50%.)
-  **STANDBY TIME** (Press to adjust stand-by time + ∞ /1min/30min/60min.)
 Note: "+ ∞ "means unlimited stand-by time,and the light control mode is the light control priority mode, otherwise it's the light threshold mode.
-  **RESET**
 Press "RESET"button,products with DIP switch will be controlled by DIP switches;Otherwise all the setting will change,which is Brightness 70%/ Hold time 10s/ Sensitivity 20%/ Daylight threshold disable/Stand-by dimming level 10% / Stand-by time+∞.
-  **TEST**
 The button "TEST" is for testing purpose after debugging.Pressing this button,the sensor goes to test mode(hold time is only 3s).
-  **+** Press to increase brightness(0-100%).
-  **-** Press to reduce brightness(100%-0%).

Attention



1. Please read the instructions carefully before using this product and keep it for future reference.
2. The sensor should be installed by a qualified electrician and ensure power is off before the installation.
3. We reserve the right to modify any incorrect text, image and necessary technical parameters.
4. Any unauthorized modification is forbidden, otherwise all guarantees will be immediately invalid.

Installation Precautions

1. Turn the power off at the circuit breaker before installing the sensor.
2. Do not allow bare wires to show.
3. Assemble any necessary mounting accessories.
4. Have the sensor's lens lower than edge of the fixture and keep the sensor away from heating part.

Application Environment

1. Do not mount it outdoors, as it is sensitive to temperature changes.
2. Do not mount in areas with sudden changes in temperature or airflow.
3. Do not have shelves between sensor to the presence area.