

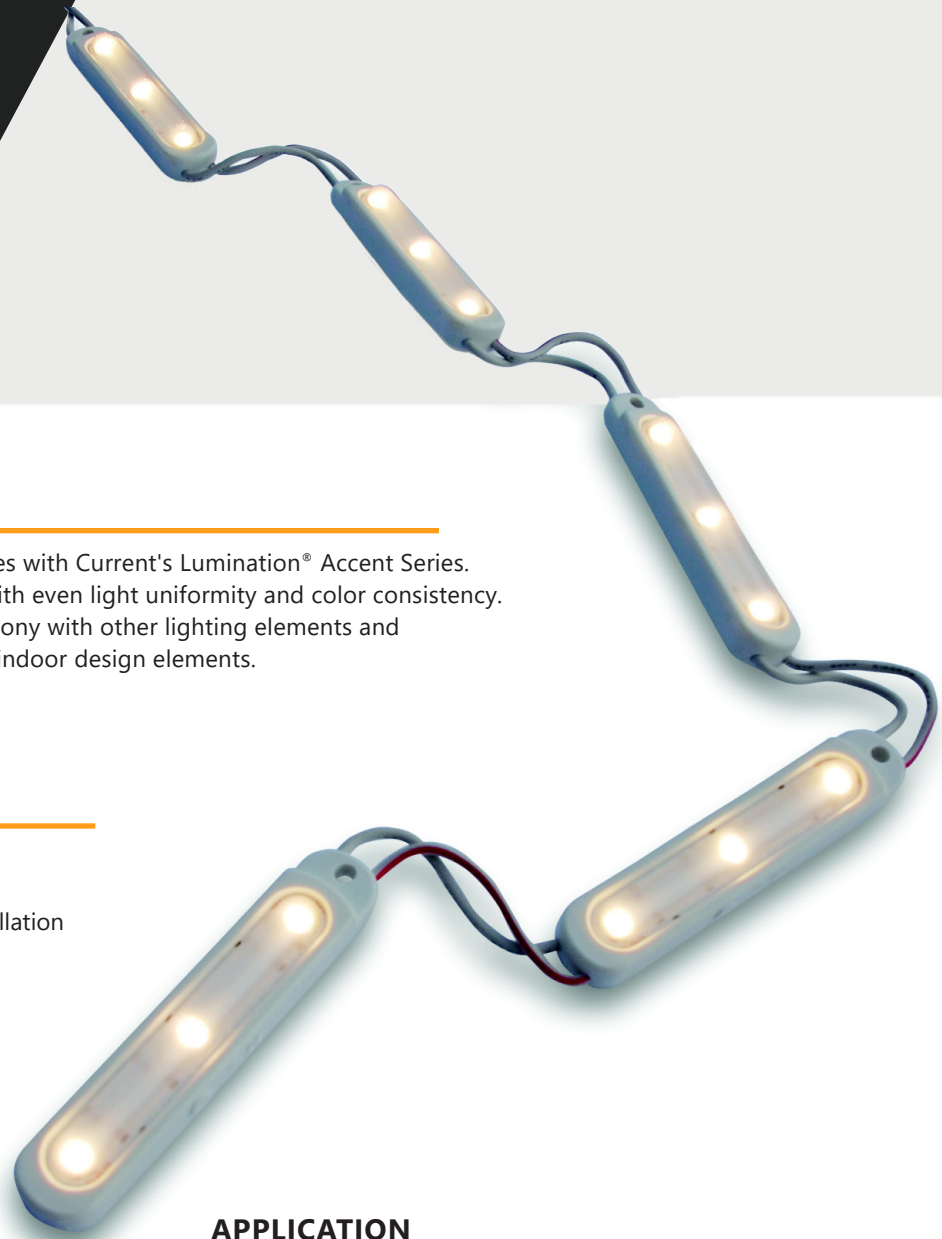
Lumination® Accent

LED ARCHITECTURAL SPECIALTY

Project Name _____

Date _____ Type _____

Notes _____



PRODUCT FEATURES

Add additional lighting layers to highlight your spaces with Current's Lumination® Accent Series. Highlight objects, trim or accent pieces by skirting with even light uniformity and color consistency. These low profile LED lighting modules work in harmony with other lighting elements and structures to provide subtle emphasis and drama to indoor design elements.

FEATURES & BENEFITS

- Uniform light distribution
- Cut between every module for the right length
- Modular, low-voltage 12VDC system for easy installation
- Dimmable with 0-10V Dimming LED Driver
- IP54, dry or damp location rated
- Optional linear track for straight alignment can be mounted at 0° or 30°



APPLICATION

- Small spaces where other lighting technology won't physically fit
- Dramatic light layering with nominal energy consumption

LED TECHNOLOGY

- Long rated life: 50,000 hours
- Energy Efficient
- 5 year limited warranty
- No UV emissions

Lumination® Accent

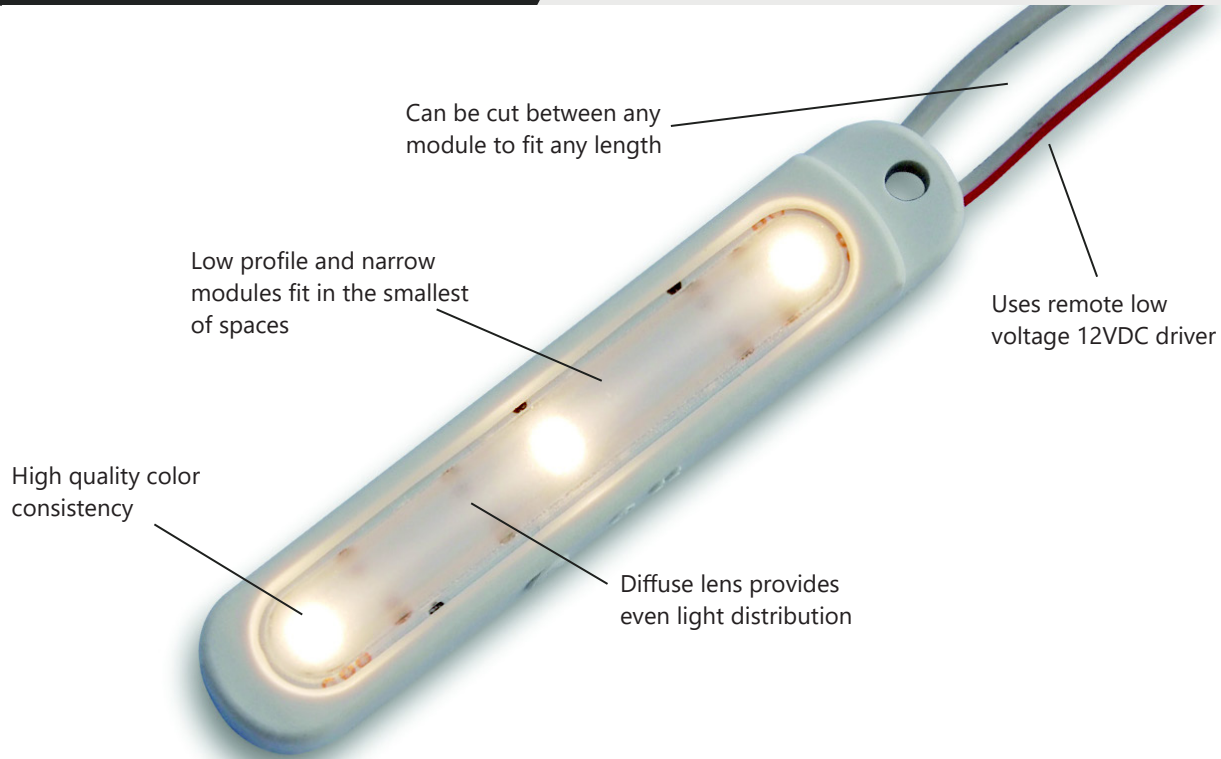
LED ARCHITECTURAL SPECIALTY

Dimensional Details

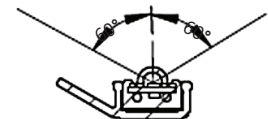
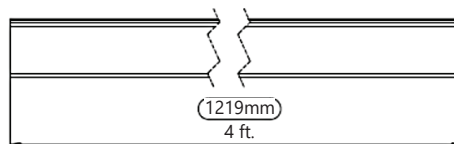
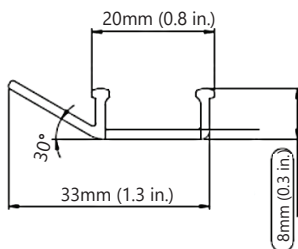
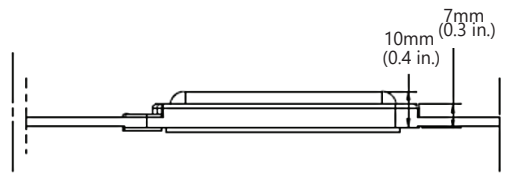
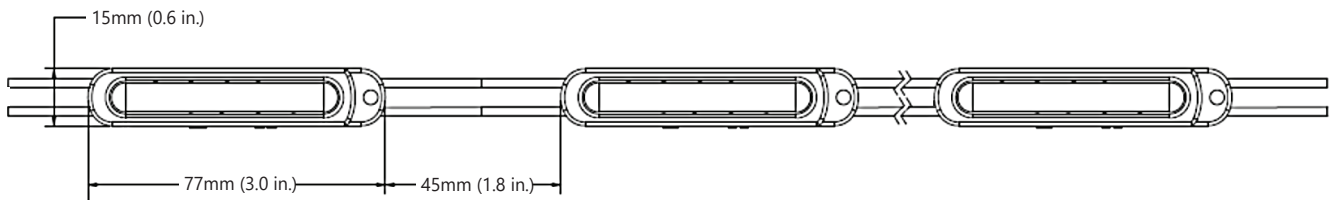
Project Name _____

Date _____ Type _____

Notes _____



DIMENSIONAL DRAWINGS



Typical dimensions shown in mm (inches)

Lumination® Accent

LED ARCHITECTURAL SPECIALTY

Specification Details

Project Name _____

Date _____ Type _____

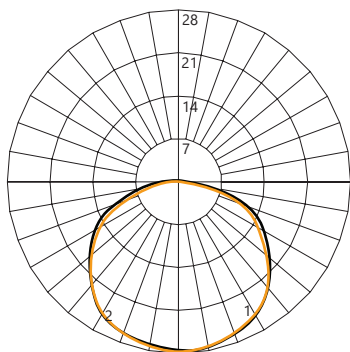
Notes _____

Technical Specifications by SKU

PRODUCT CODE	DESCRIPTION CODE	CCT +/-	LENS	STRIP W/MODULE (PER FT, PER M)	SYSTEM W/MODULE (PER FT, PER M)	LM/MODULE (PER FT, PER M)	LPW (SYSTEM)
93013521	GEWWNL2-27K-A	2700K +90 /-40	115°	0.78 (1.95, 6.39)	0.97 (2.40, 7.95)	82 (205, 672)	85
93013525	GEWWNL2-30K-A	3000K +115 /-65	115°	0.78 (1.95, 6.39)	0.97 (2.40, 7.95)	83 (208, 680)	86
93013526	GEWWNL2-35K-A	3500K +120 /-120	115°	0.78 (1.95, 6.39)	0.97 (2.40, 7.95)	84 (210, 689)	87
93013527	GEWWNL2-40K-A	4000K +121 /-151	115°	0.78 (1.95, 6.39)	0.97 (2.40, 7.95)	85 (213, 698)	88

PRODUCT CODE	DESCRIPTION CODE	PRODUCT DESCRIPTION	QUANTITY
75514	9409	18 AWG Supply Wire (0.82 mm ²)	500 ft. (152.4 m)/PK
75545	19216004	18-14 AWG In-line Splice Connector (0.82-2.08 mm ²)	500/PK
65459	NL1-MT48/0	Mounting Track 0° or 30° Angle, 48 in. (1219 mm)	5/PK
67824	GEPS12-60UGL-IP	LED Driver (12VDC/60W); Input Voltage: 120-277VAC; Damp Location Rated	1/PK
74914	GE020/G/V12T1-B	LED Driver (12VDC/20W); Input Voltage: 90-264VAC; Damp Location Rated	1/PK
79044	GE060/MV/D12T1-A	0-10V Dimming LED Driver (12VDC/60W); Input Voltage: 90-305VAC; Damp Location Rated	1/PK
85790	NL1-FT48/0	Flexible Mounting Track, 48 in. (1219 mm)	5/PK

Light Output



CENTER BEAM ILLUMINANCE (LX)			
4000K	3500K	3000K	2700K
1229.3	1225.3	1200.4	1196.1
307.3	306.3	300.1	299.0
136.6	136.1	133.4	132.9
76.8	76.6	75.0	74.8
49.2	49.0	48.0	47.8
34.1	34.0	33.3	33.2

CANDELA (CD) MEASUREMENTS								
DEG°	4000K		3500K		3000K		2700K	
	V	H	V	H	V	H	V	H
0	28.6	28.6	28.5	28.5	27.9	27.9	27.8	27.8
10	28.4	28.1	28.3	28.0	27.7	27.5	27.6	27.3
20	26.9	26.6	26.8	26.5	26.3	26.0	26.1	25.8
30	24.1	24.1	24.0	24.0	23.6	23.5	23.4	23.4
40	20.7	21.3	20.6	21.1	20.3	20.8	20.1	20.6
50	16.8	17.9	16.6	17.7	16.4	17.5	16.2	17.3
60	12.4	13.9	12.2	13.7	12.2	13.5	11.9	13.4
70	8.0	9.4	7.8	9.2	7.8	9.2	7.6	9.0
80	3.4	3.9	3.2	3.8	3.3	3.8	3.2	3.7
90	0.9	0.9	0.8	0.9	0.9	0.9	0.8	0.8

CANDELA (CD) MEASUREMENTS								
	4000K		3500K		3000K		2700K	
	V	H	V	H	V	H	V	H
0.5 ft (0.15m)	0.45	0.51	0.44	0.50	0.45	0.45	0.44	0.50
1.0 ft (0.30m)	0.90	1.01	0.88	1.01	0.90	0.90	0.88	1.01
1.5 ft (0.46m)	1.35	1.52	1.32	1.51	1.35	1.35	1.32	1.51
2.0 ft (0.61m)	1.80	2.03	1.76	2.01	1.80	1.80	1.76	2.01
2.5 ft (0.76m)	2.25	2.54	2.20	2.51	2.25	2.25	2.20	2.51
3.0 ft (0.91m)	2.70	3.04	2.64	3.02	2.70	2.70	2.64	3.02

IES files can be downloaded at LED.com

Technical Specifications

Operating Voltage: 12VDC System

Driver maximum loading:

20W: 24 modules (9.4 ft., 2.9 m)

60W: 68 modules (27.2 ft., 8.3 m)

Dimming: Dimmable with 0-10V Dimming LED Driver or Dimming Module with Current's LED Driver and compatible dimming controller

Module Weight: 0.02lb (0.01kg)

Limited Warranty: 5 years

This product is intended solely for the use of nonresidential architecture lighting and is not intended for any other applications.

Max remote mounting distance:

20W

50 ft. (15.2 m)

75 ft. (22.9 m)

125 ft. (38.1 m)

225 ft. (68.6 m)

Wire size: 18AWG (0.82 mm²)

Modules per ft: 2.5

Modules per Strip: 50 modules (20 ft., 6.1 m)

Ambient Temperature: -40°C to +60°C

CRI: >=80

Environmental Rating: IP54, dry or damp location rated

System Certifications:

