

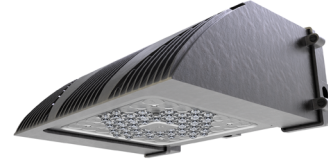
# TRAVERSE

LED SURFACE WALL AMBER

DATE:	LOCATION:
TYPE:	PROJECT:
CATALOG #:	

## FEATURES

- Wall surface mounted luminaire with a field replaceable LED light engine & optical bezel system
- Horizontal opening motion allows for minimal effort during installation, maintenance, or upgrading
- LED wattages from 45–105Watt. Available in 45W, 65W, 80W and 105W packages
- Easy and fast mounting. Simply mount the backplate to wall and attach front on hinges to close



\*3000K and warmer CCTs only

## SPECIFICATIONS

### CONSTRUCTION

- Traverse luminaire consists of a die cast aluminum two-piece housing
- Die cast main (thermal) housing provides direct heat exchange between the LED light engine and the cool outdoor
- LED drivers are thermally isolated from the main housing, mechanically attached and heat sunk to the rear housing
- Shape of the main housing is designed to prevent debris accumulation and as a bird nesting deterrent. The back and main housings are designed to hinge open for easy mounting and easy access
- IFS polyester powder-coat electrostatically applied and thermocured
- IFS finish consists of a five stage iron phosphate chemical pretreatment regimen with a polymer primer sealer, oven dry off, and top coated with a thermoset super TGIC polyester powder coat finish
- The finish meets the AAMA 2604 performance specification which includes passing a 3000 hour salt spray test for corrosion resistance and resists cracking or loss of adhesion per ASTM D522 and resists surface impacts of up to 160 inch-pounds

### OPTICS

- Optical one piece cartridge system consisting of an LED engine, optics, gasket and stainless steel bezel

### OPTICS (CONTINUED)

- Cartridge is held together with internal brass standoffs soldered to the board so that it can be field replaced as a one piece optical system
- Optics are held in place without the use of adhesives
- Cartridge assembly is available in various lighting distributions using TIR designed acrylic optical lenses over each LED

### ELECTRICAL

- 100V through 277V, 347V and 480V, 50 Hz to 60 Hz
- Dimming Drivers are standard and dimming leads are extended out of the luminaire unless control options require connection to the dimming leads. Must specify if wiring leads are to be greater than the 6" standard.
- Component-to-component wiring within the luminaire may carry no more than 80% of rated load and is certified by UL for use at 600 VAC at 50°C or higher
- Plug disconnects are certified by UL for use at 600 VAC, 13A or higher. 13A rating applies to primary (AC) side only
- Surge protection - 20kA
- Please consult brand or sales representative when combining control and electrical options as some combinations may not operate as anticipated depending on your application.

### INSTALLATION

- Rear housing (back plate) is designed with various bolt patterns for direct wall mounting or mounting to a recessed junction box
- Rear housing has three integral 3/4" NPT power feed locations (bottom and each side) for surface mounted conduit applications
- After mounting the rear housing to the wall or junction box, the main housing is designed to attach and hinge closed after connecting the male and female quick connectors
- Mounting design permits a simple retrofit to existing wall luminaires that utilize or recessed junction boxes

### CERTIFICATIONS

- UL Listed, Suitable for wet locations (standard)
- IDA approved

### WARRANTY

- 5 year warranty

KEY DATA	
Lumen Range	1200–3200
Wattage Range	45–105
Efficacy Range (LPW)	27–30

DATE:	LOCATION:
TYPE:	PROJECT:
CATALOG #:	

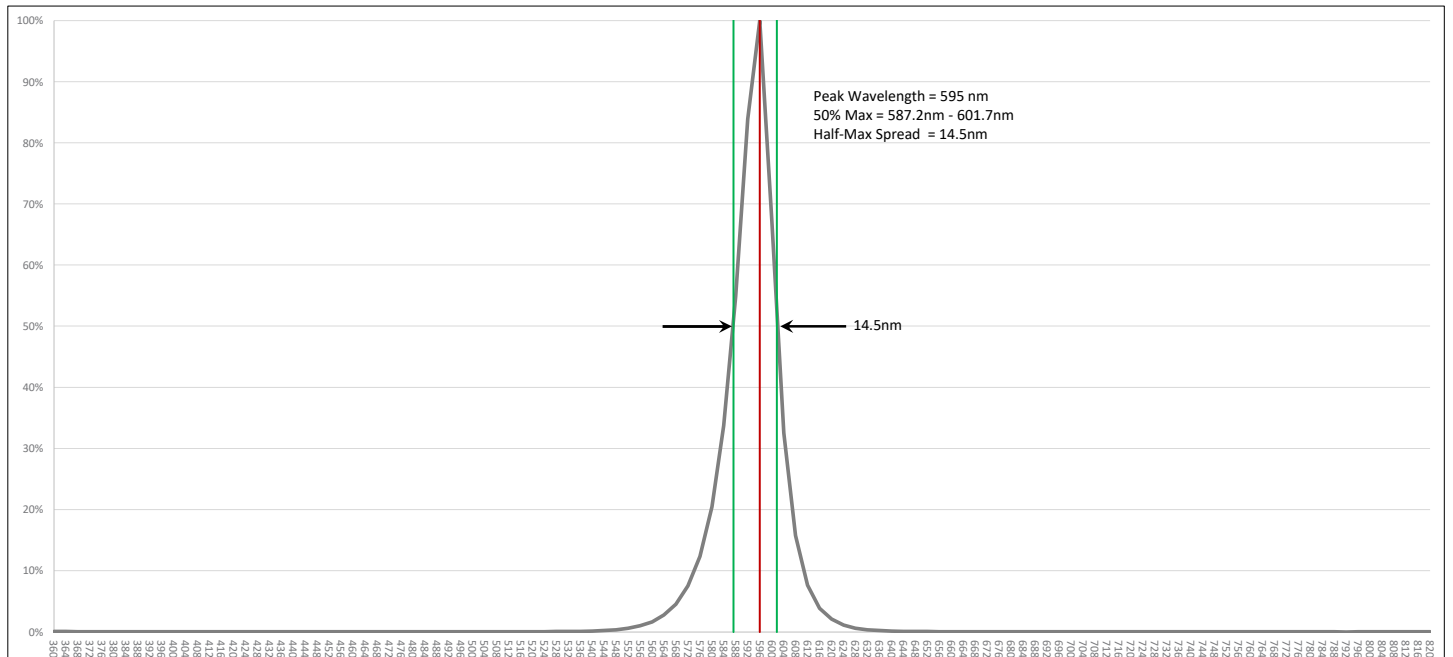
## ORDERING GUIDE

**Example:** TRV-D-24L-45-AM-3-UNV-PCU-DBT

CATALOG #

Series	Engine Watts	AM CCT/CRI	Optics	Voltage	Electrical Option	Finish
<b>TRV-D</b> Traverse Down Light	<b>24L-45</b> 45 Watt - LED array	<b>AM</b> Monochromatic Amber, 595nm	<b>2</b> Type II	<b>UNV</b> 120-277V	<b>PCU</b> Button Photocell, 120-277V only	<b>BLT</b> Black Matte Textured
	<b>36L-65</b> 65 Watts - LED array		<b>3</b> Type III	<b>347</b> 347V		<b>BLS</b> Black Gloss Smooth
<b>TRV-U</b> Traverse Up Light (lens req.)	<b>48L-80</b> 80 Watts - LED array		<b>4</b> Type IV	<b>480</b> 480V		<b>DBT</b> Dark Bronze Matte Textured
	<b>60L-105</b> 105 Watts - LED array		<b>5R</b> Type V, rectangular			<b>DBS</b> Dark Bronze Gloss Smooth
			<b>5W</b> Type V, Wide			<b>GTT</b> Graphite Matte Textured
						<b>LGS</b> Light Grey Gloss Smooth
						<b>PSS</b> Platinum Silver Smooth
						<b>WHT</b> White Matte Textured
						<b>WHS</b> White Gloss Smooth
						<b>VGT</b> Verde Green Textured
						<b>Color Option</b>
						<b>CC</b> Custom Color

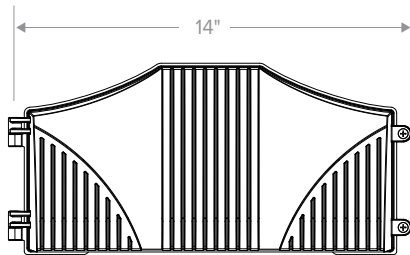
## SPECTRAL CHART



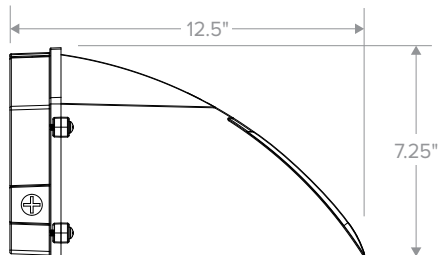
## PERFORMANCE DATA

# LED'S	DRIVE CURRENT	SYSTEM WATTS 120-277V	DISTRIBUTION TYPE	AMBER (1400K)				
				LUMENS	LPW	B	U	G
24	700mA	45W	2	1269	28	0	0	0
			3	1245	28	0	0	1
			4	1224	27	0	0	1
			4W	1198	27	0	0	1
			5R	1255	28	1	0	1
			5W	1340	30	1	0	0
36	700mA	65W	2	1904	29	0	0	0
			3	1868	29	0	0	1
			4	1836	28	0	0	1
			4W	1796	28	0	0	1
			5R	1883	29	1	0	1
			5W	1834	28	1	0	1
48	700mA	80W	2	2539	30	1	0	1
			3	2490	29	1	0	1
			4	2449	29	0	0	1
			4W	2395	28	0	0	1
			5R	2510	30	1	0	1
			5W	2446	29	2	0	1
60	700mA	105W	2	3173	30	1	0	1
			3	3111	28	1	0	2
			4	3061	29	0	0	1
			4W	2994	28	1	0	1
			5R	3138	29	2	0	2
			5W	3060	29	2	0	1

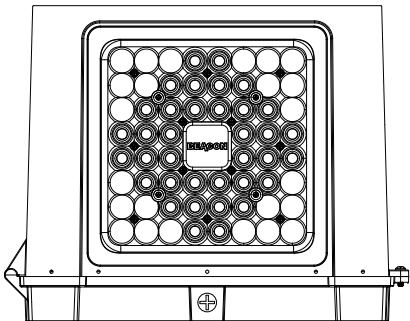
## DIMENSIONS



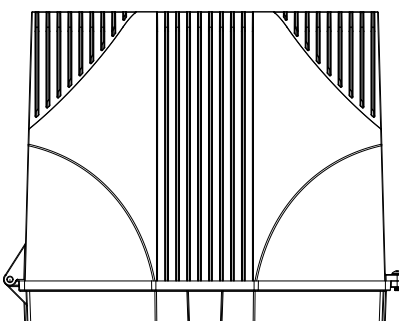
Front View



Side View



Bottom View



Top View