

Vanish

EDGE-LIT CANOPY

DATE:	LOCATION:
TYPE:	PROJECT:
CATALOG #:	



FEATURES

- Edge-Lit technology for even illumination
- Low profile 2.1" depth design virtually disappears into the canopy
- Illuminates without distraction and glare
- Pendant or surface mounted with ¾" conduit
- Universal retrofit solution for HID replacements for various sizes
- IP66 rating to keep water and insects out
- Cast Aluminum with integral heat sink to maintain optimal thermal performance for long LED life Cast aluminum



SPECIFICATIONS

CONSTRUCTION

- Die-cast aluminum, low profile housing
- New construction or retrofit solution
- Canopy and soffit applications
- Easy installation
- Driver and optical chamber serviceable from below canopy
- Powder coat finish
- Heat sink design to disperse heat away from fixture
- Suitable for wet locations

OPTICS

- Acrylic Lens
- Type V distribution
- Comfort lens for low glare
- Light Guide Edge-Lit technology

INSTALLATION

- Surface or pendant mounted
- Easy installation and serviceable below the canopy deck
- Hinge for hanging during service

ELECTRICAL

- Universal 120-277, 347, 480 Input Voltage
- Power Factor > 0.9 at full load
- Total Harmonic Distortion < 20% at full load
- 10 kV Surge Protection
- 0-10 Volt Dimmable Driver
- Operating temperature: -40°C to +40°C

CERTIFICATIONS

- UL Certified
- DesignLights Consortium™ 5.1 qualified
- Wet Location Listed
- IP66
- DLC® (DesignLights Consortium Qualified), with some Premium Qualified configurations. Please refer to the DLC website for specific product qualifications at www.designlights.org

WARRANTY

- 5 year warranty

ORDERING GUIDE

Example: VSH-85-5K7-UNV-WHS

CATALOG #

VSH					
Series	Size	Color Temp	Voltage	Finish	
VSH Vanish	30'	4K7	UNV Universal	BLT Black Matte Textured	Notes: 1 Only available in Universal Voltage
	55	5K7	347 347V	BLS Black Gloss Smooth	
	85		480 480V	DBT Dark Bronze Matte Textured	
	140			DBS Dark Bronze Gloss Smooth	
				GTT Graphite Matte Textured	
				LGS Light Grey Gloss Smooth	
				LGT Light Grey Matte Textured	
				PSS Platinum Silver Smooth	
				WHT White Matte Textured	
				WHS White Gloss Smooth	
				VGt Verde Green Textured	
				Color Option	
				CC Custom Color	

KEY DATA	
Lumen Range	4,500 – 20,200
Wattage Range	30 – 140 Watts
Efficacy Range (LPW)	138 – 157
Reported Life (Hours)	>60,000

Vanish

EDGE-LIT CANOPY

PERFORMANCE DATA

Product	Lumens	B	U	G	LPW	CRI	CCT
VSH-30-4K7	4564	2	0	1	150	70	4000K
VSH-30-5K7	4793	2	0	1	157	70	5000K
VSH-55-4K7	8846	3	0	2	153	70	4000K
VSH-55-5K7	9069	3	0	2	157	70	5000K
VSH-85-4K7	13296	3	0	2	152	70	4000K
VSH-85-5K7	13666	3	0	2	157	70	5000K
VSH-140-4K7	19649	4	0	3	138	70	4000K
VSH-140-5K7	20196	4	0	3	142	70	5000K

Data is considered to be representative of the configurations shown. Actual performance may differ as a result of end-user environment application and inherent performance balances of the electrical components.

PROJECTED LUMEN MAINTENANCE

Ambient Temperature	OPERATING HOURS					
	0	25,000	50,000	TM-21-11' L96 60,000	100,000	L70 (Hours)
25°C / 77°F	1.00	0.94	0.92	0.90	0.81	>170,000
40°C / 104°F	0.99	0.94	0.92	0.89	0.80	>160,000

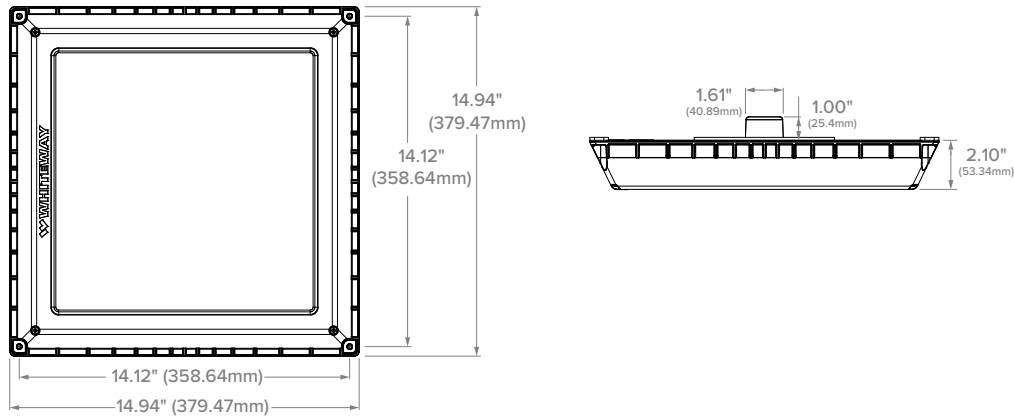
LUMINAIRE AMBIENT TEMPERATURE FACTOR (LATF)

Ambient Temperature		Lumen Multiplier
0°C	32°F	1.03
10°C	50°F	1.01
20°C	68°F	1.00
25°C	77°F	1.00
30°C	86°F	0.99
40°C	104°F	0.98
50°C	122°F	0.97

Vanish

EDGE-LIT CANOPY

DIMENSIONS



MOUNTING ACCESSORIES

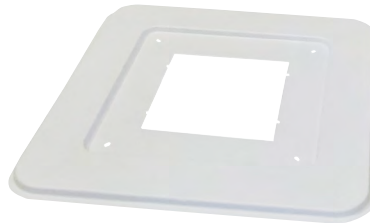
Accessories (order separately)

- | | | |
|--|-------------------------------------|--|
| <input type="checkbox"/> 93133148 | WHITEWAY 15 IN CVR PLT WHT VSH/GSY | Retrofit cover plate for LSI Encore 15" square-replacement for 10" opening |
| <input type="checkbox"/> 93133149 | WHITEWAY DECORATIVE CVR PLT VSH/GSY | 26" Decorative Beauty Plate for Canopy Retrofits |
| <input type="checkbox"/> 93133151 | WHITEWAY HID RETRFT KIT WHT VSH/GSY | Universal HID retrofit kit (fits any square HID housing between 21" & 23" square.) |
| <input type="checkbox"/> 93133177 | WHITEWAY STEM AND JUNCTION BOX | |

93133148



93133149



93133151

- Measure outside dimension of existing housing



93133177

