

VIPER Wall

VPW2/VPW3 LED WALLPACK AMBER

FEATURES

- Low profile LED wall luminaire with a variety of IES distributions for lighting applications such as retail, commercial and industrial building mount
- Featuring Strike Optics which maximizes target zone illumination with minimal losses at the house-side, reducing light trespass issues
- Option for Size 2 and Size 3
- Control options including photo control, occupancy sensing, NX Distributed Intelligence™, and LightGRID+.
- Quick-mount adapter allows easy installation/maintenance
- Uses true amber LEDs, unlike phosphor-converted amber LEDs which still product blue wavelength that can be disruptive to wildlife
- Specially designed amber-colored LEDs produce light with narrow spectral distribution that minimizes disruption to sea turtles and other wildlife
- LEDs have a peak wavelength between 589–595 nm and a width of no more than 20nm at 50% power



CONTROL TECHNOLOGY



SPECIFICATIONS

CONSTRUCTION

- Die-cast housing with hidden vertical heat fins that are optimal for heat dissipation while keeping a clean smooth outer surface
- Corrosion resistant, die-cast aluminum housing with powder coat paint finish
- Powder paint finish provides durability in outdoor environments. Tested to meet 1000 hour salt spray rating

OPTICS

- Entire optical aperture illuminates to create a larger luminous surface area resulting in a low glare appearance without sacrificing optical performance
- Zero uplight distributions
- LED optics provide IES type II, III and IV distributions.

INSTALLATION

- Quick-mount adapter provides easy installation to wall or to recessed junction boxes (4" square junction box)
- Designed for direct j-box mount.

ELECTRICAL

- 120V-277V universal voltage 50/60Hz 0-10V dimming drivers
- Ambient operating temperature -40°C to 40°C
- Driver RoHS and IP66
- 10kV Surge Protector optional
- Drivers have greater than .90 power factor and less than 20% Total Harmonic Distortion
- Dual Driver option provides 2 drivers within luminaire but only one set of leads exiting the luminaire, where Dual Power Feed provides two drivers which can be wired independently as two sets of leads are extended from the luminaire. Both options can not be included in one same fixture.
- Dimming drivers are standard. Select CD (Customer Dimming) for the dimming wires to be extended outside the fixture.

CONTROLS

- Photo control, occupancy sensor and wireless available for complete on/off and dimming control
- Button photocontrol is suitable for 120-277V operation
- NX Distributed Intelligence™ available with in fixture wireless control module, features dimming and occupancy sensor

CONTROLS CONTINUED

- Please consult brand or sales representative when combining control and electrical options as some combinations may not operate as anticipated depending on your application.
- LightGRID+ available with in fixture wireless control module, features dimming and occupancy sensor.

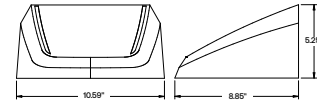
CERTIFICATIONS

- Certified to UL 1598 and CSA 22.2#250.0-24
- IP65 rated housing
- This product meets federal procurement law requirements under the Buy American Act (FAR 52.225-9) and Trade Agreements Act (FAR 52.225- 11). See Buy America(n) Solutions (link to <https://http://www.currentlighting.com/resources/americasolutions>).

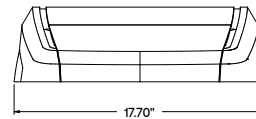
WARRANTY

- 5 year limited warranty

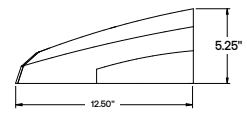
OPTICS
STRIKE



VPW2



VPW3



	Weight
VPW2	715 lbs / 3.24 kg
VPW3	17.1 lbs / 7.80 kg

VIPER Wall

VPW2/VPW3 LED WALLPACK AMBER

ORDERING GUIDE

Example: VPW3-36L-25-AM-2-UNV-DBT

CATALOG #

Series	Optic	# LEDs - Wattage	CCT/CRI	Distribution	Voltage	Color
VPW2 Viper Wall 2	ST Strike	18L-15 1000 Lumens 18L-20 1250 Lumens	AM Monochromatic Amber (595nm or longer)	2 IES TYPE 2 3 IES TYPE 3	UNV 120-277V 120 120V	BLT Black Matte Textured BLS Black Gloss Smooth
VPW3 Viper Wall 3	ST Strike	36L-15 1500 Lumens 36L-20 1750 Lumens 36L-25 2000 Lumens 36L-30 2250 Lumens 36L-40 2500 Lumens 36L-50 2750 Lumens 36L-65 3000 Lumens		4F IES TYPE 4 Forward 4W IES TYPE 4W	208 208V 240 240V 277 277V 347 347V	DBT Dark Bronze Matte Textured DBS Dark Bronze Gloss Smooth GTT Graphite Matte Textured LGS Light Grey Gloss Smooth LGT Light Grey Matte Textured PSS Platinum Silver Smooth WHT White Matte Textured WHS White Gloss Smooth VGT Verde Green Textured
						Color Option
						CC Custom Color

Control Options Network ^{5,6}	
NXWS12F	NX Networked Wireless Enabled Integral NXSMP2-OMNI PIR Occupancy Sensor with Automatic Dimming Photocell and Bluetooth Programming ⁴
NXWS16F	NX Networked Wireless Enabled Integral NXSMP2-LMO PIR Occupancy Sensor with Automatic Dimming Photocell and Bluetooth Programming ⁷
NXWS24F	NX Networked Wireless Enabled Integral NXSMP2-OMNI-HM PIR Occupancy Sensor with Automatic Dimming Photocell and Bluetooth Programming ⁷
NXWS40F	NX Networked Wireless Enabled Integral NXSMP2-HMO PIR Occupancy Sensor with Automatic Dimming Photocell and Bluetooth Programming ⁷
NXW	NX Networked Wireless Radio Module NXRM2 and Bluetooth Programming, without Sensor
Stand Alone Sensors ^{5,6}	
BTS-14F	Bluetooth® Programmable, PIR Occupancy/Daylight Sensor ^{7,8}
BTS-40F	Bluetooth® Programmable, PIR Occupancy/Daylight Sensor ^{7,8}
BTSO-12F	Bluetooth® Programmable, PIR Occupancy/Daylight Sensor, up to 12' mounting height ⁴
WIR	LightGrid+ In-Fixture Module ⁷
WIRSC	LightGrid+ In-Fixture Module with BTS occupancy ⁷
Photocontrol	
PC	Button Photocontrol 120-277V

Options	
F	Fusing ¹
SP	10kA Surge Protector
2PF	Dual Power Feed ²
2DR	Dual Driver ²

- Notes:
- 1 Must specify voltage
 - 2 Only available for 25W or higher
 - 3 Only available in VPW3
 - 4 NXWS12F and BTSO-12F are the only sensors available in VPW2
 - 5 Network controls cannot be combined with other control options
 - 6 Not available with 2PF
 - 7 Not available in VPW2
 - 8 Not available with 2PF or 2DR

ACCESSORIES AND REPLACEMENT PARTS - MADE TO ORDER

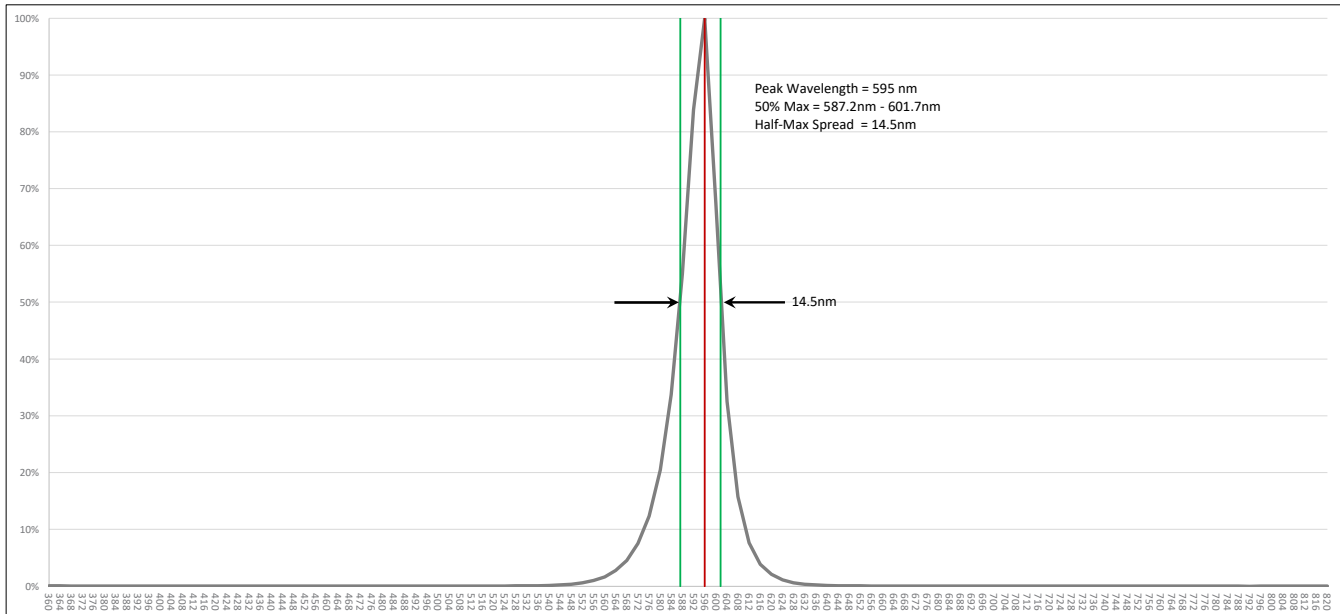
Catalog Number	Description
<input type="checkbox"/> WP-BB-XXX	Accessory for conduit entry ¹

- Notes:
- 1 replace "xxx" with color option

VIPER Wall

VPW2/VPW3 LED WALLPACK AMBER








SPECTRAL CHART



CONTROLS FUNCTIONALITY

OUTDOOR LIGHTING CONTROLS OPTIONS

LIGHT GRID⁺


	Control Option Ordering Logic & Description	Control Option Functionality									Control Option Components
		Networkable	Grouping	Scheduling	Occupancy/ Motion	Daylight Harvesting	0-10V Dimming	On/Off Control	Bluetooth App Programming	Sensor Height	
NX Wireless	NXW NX Networked Wireless Radio Module NXR2 and Bluetooth Programming, without Sensor	✓	✓	✓	-	-	✓	✓	✓	-	 NXRM2-H
	NXWS16F NX Networked Wireless Enabled Integral NXSM2-LMO PIR Occupancy Sensor with Automatic Dimming Photocell and Bluetooth Programming	✓	✓	✓	✓	✓	✓	✓	✓	16ft	 NXSM2-LMO
	NXWS40F NX Networked Wireless Enabled Integral NXSM2-HMO PIR Occupancy Sensor with Automatic Dimming Photocell and Bluetooth Programming	✓	✓	✓	✓	✓	✓	✓	✓	40ft	 NXSM2-HMO
LightGRID+	WIR LightGRID+ In-Fixture Module	✓	-	✓	-	-	✓	✓	Gateway	-	 WIR
Independent	BTSO-12F Bluetooth® Programmable, BTSMP-OMNI-O PIR Occupancy Sensor with Automatic Dimming Photocell and 360° Lens	-	-	-	✓	✓	✓	✓	✓	12ft	 BTSMP-OMNI-O
	BTS-14F Bluetooth® Programmable, BTSMP-LMO PIR Occupancy Sensor with Automatic Dimming Photocell and 360° Lens	-	-	-	✓	✓	✓	✓	✓	14ft	 BTSMP-LMO
	BTS-40F Bluetooth® Programmable, BTSMP-HMO PIR Occupancy Sensor with Automatic Dimming Photocell and 360° Lens	-	-	-	✓	✓	✓	✓	✓	40ft	 BTSMP-HMO

DEFAULT SETTINGS

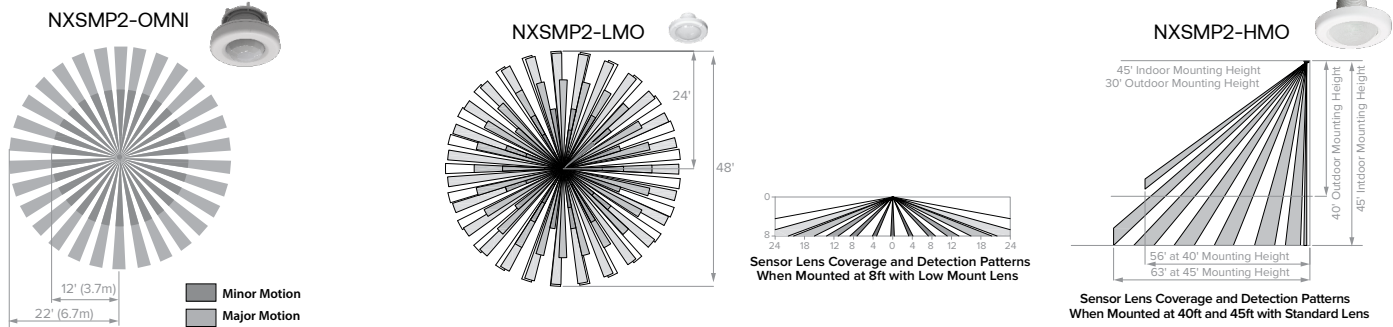
NX Wireless	Occupancy Sensor	Enabled
	Occupancy Sensor Sensitivity	7
	Occupancy Sensor Timeout	15 Minutes
	Occupied Dim Level	100%
	Unoccupied Dim Level	0%
	Daylight Sensor	Disabled
	Bluetooth	Enabled
	2.4GHz Wireless Mesh	On
	"Passcode Factory Passcode: HubbN3T!"	Enabled

Stand Alone	Occupancy Sensor	Enabled
	Occupancy Sensor Sensitivity	7
	Occupancy Sensor Timeout	8 Minutes
	Occupied Dim Level	100%
	Unoccupied Dim Level	50%
	Daylight Sensor	Disabled

VIPER Wall

VPW2/VPW3 LED WALLPACK AMBER

NX WIRELESS COVERAGE PATTERNS



NX LIGHTING CONTROLS FREE APP

CONTROLS TECH SUPPORT 800-888-8006 (7:00 AM - 7:00 PM)



The NX Lighting Controls App is free to use mobile application for programming both NX Lighting Controls System or Standalone Bluetooth Sensors. The mobile app allows you to configure devices, discover and setup wireless enable luminaires and program NX system settings.

Apple App: <https://apps.apple.com/us/app/nx-lighting-controls/id9621f2904>

Google Play: https://play.google.com/store/apps/details?id=io.cordova.NXBTR&hl=en_US&gl=US



Apple App



Google Play

PERFORMANCE DATA

Description	Nominal Wattage	System Watts	Dist. Type	Amber (AM)				
				Lumens	LPW	B	U	G
18L	15	13.3	2	1004	75	0	0	0
			3	993	75	0	0	1
			4F	1008	76	0	0	1
			4W	995	75	0	0	1
	20	19.4	2	1278	66	0	0	1
			3	1264	65	0	0	1
			4F	1283	66	0	0	1
			4W	1266	65	0	0	1

Description	Nominal Wattage	System Watts	Dist. Type	Amber (AM)				
				Lumens	LPW	B	U	G
36L	15	17.3	2	1444	83	0	0	1
			3	1428	83	0	0	1
			4F	1449	84	0	0	1
			4W	1430	83	0	0	1
	20	22	2	1744	79	0	0	1
			3	1726	78	0	0	1
			4F	1751	80	0	0	1
			4W	1728	79	0	0	1
	25	26.6	2	2005	75	1	0	1
			3	1984	75	0	0	1
			4F	2013	76	0	0	1
			4W	1987	75	0	0	1
	30	31.5	2	2266	72	1	0	1
			3	2242	71	0	0	1
			4F	2275	72	0	0	1
			4W	2245	71	0	0	1
	40	38.9	2	2546	65	1	0	1
			3	2519	65	1	0	1
			4F	2556	66	0	0	1
			4W	2523	65	0	0	1
50	49.3	2	2827	57	1	0	1	
		3	2797	57	1	0	1	
		4F	2838	58	0	0	1	
		4W	2801	57	1	0	2	
65	62.3	2	3008	48	1	0	1	
		3	2976	48	1	0	1	
		4F	3019	48	0	0	1	
		4W	2980	48	1	0	2	

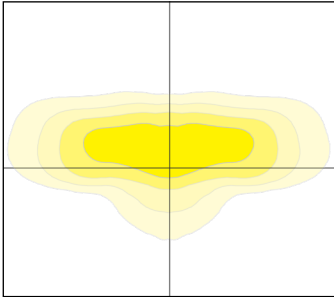
VIPER Wall

VPW2/VPW3 LED WALLPACK AMBER

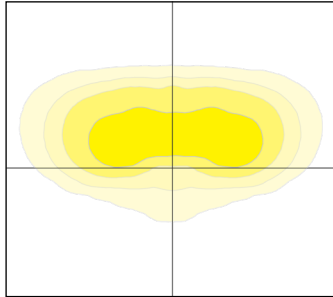
PHOTOMETRY

Mounting Height: 30ft

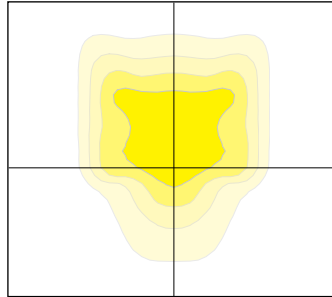
Type 2



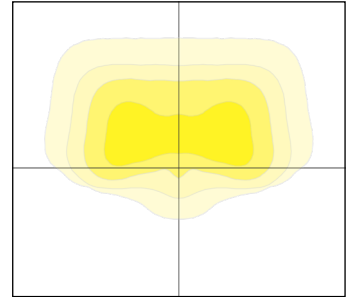
Type 3



Type 4F

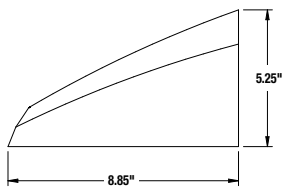
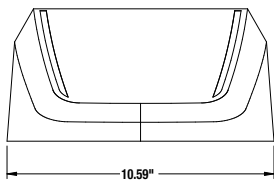


Type 4W

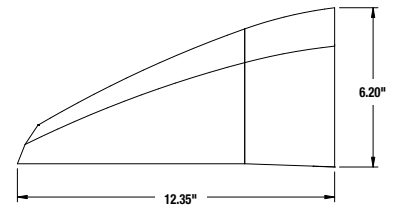
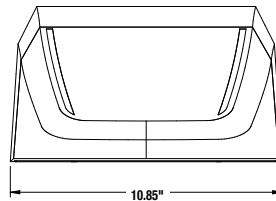


DIMENSIONS

VPW2



VPW2 with Back Box



VPW3

