

DATE:	LOCATION:
TYPE:	PROJECT:
CATALOG #:	

CLED

SURFACE MOUNT CANOPY

FEATURES

- Stylish vertically finned die-cast heat sink
- Designed for optimal thermal transfer and easy installation
- Made from low-copper marine-grade cast aluminum
- Optical assembly designed to exceed IP66 design standards allowing for light hose-down cleaning
- Thermal frame technology provides state-of-the-art passive cooling in the most demanding environments
- 73 CRI standard
- Wet Location Listed
- Operating Temp: -40°C - 40°C
- Hub Requires 3" Recess for Surface Mounting
- Optional 0-10V dimming



SPECIFICATIONS

CONSTRUCTION

- Die-cast aluminum heat sink
- Shipping Weight - 19lbs
- 36" lead length out of fixture

OPTICS

- LED drivers have output power over-voltage, over-current protection and short circuit protection with auto recovery
- LED electrical assembly, including PR devices, consumes no power in 'off' state

INSTALLATION

- Requires 3" recess for surface mounting or addition of surface mounting bracket CLED SMK for conduit

ELECTRICAL

- Universal input voltage 120-277VAC, 50/60 Hz
- Automatic thermal self-protection
- Surge protection standard
- Expected life: 65,000 hours

CERTIFICATIONS

- UL
- DesignLights Consortium qualified
- cUL

WARRANTY

- 5 year warranty
- See [HLI Standard Warranty](#) for additional information

KEY DATA	
Lumen Range	4,397 - 19,596
Wattage Range	32 - 150
Efficacy Range (LPW)	62-130
Reported Life (Hours)	65,000
Input Current Range (Amps)	0.18 - 0.54
Ambient Temp. Range	-40°C - 40°C

CLED

SURFACE MOUNT CANOPY

ORDERING EXAMPLE:

Recessed Single Skin/Open Top Canopy:

1. CLED-HLHE-7-UNV-S-5-WH

Surface Mount Retrofit:

1. CLED-HLHE-7-UNV-S-5-WH
2. CLRT1

Recessed Double Skin/Enclosed Sofit

1. CLED-HLHE-7-UNV-S-5-WH
2. 93062310

 CATALOG #

ORDERING GUIDE

CLED			7		S			MP									
Series		Output		Drive Current	Voltage		Mounting	CCT	Color	Mounting Plate	Options						
CLED	LED Surface Mount Fixture	LW	33 Watts	7	700 mA	UNV	120-277	S	Surface Mount ¹	5	5100K	WH	White	MP	Mounting Plate	ED	0-10V Dimming ⁵
		LL	66 Watts			HV	347-480			4	4000K	DB	Dark Bronze			DL	Drop Lens (Field Installed)
		HLHE	120 Watts							3	3500K	CC	Custom ³			OCC	Programmable motion control, factory default is 10% light output ⁴
		XL	150 Watts														

Accessories (order separately)

- 93072702** CLED decorative beauty plate
- CLRT1** 21" Square Surface Mounted retrofit for WhiteWay Vision, Riviera II, Thunderbird housing²
- CLRT2** 23" Square Surface Mounted retrofit for LSI Masters/Dakota²
- CLRT3** 22" Square Surface Mounted retrofit for Jet Philips Hustonian SHO/RHO²
- CLEDSJK** Stem and Junction Box
- CLED18CP** Retrofit kit for WhiteWay Civic, LSI Richmond
- CLEDENC** Cover plate for LSI Encore 13" Square
- SCP-REMOTE** Remote Control for OCC option; order at least one per project to program and control
- 93088345** CLED recessed grid 2x2 adapter
- 93081999** Surface mount kit for slope ceiling (formerly CLED5MK)
- 93081764** Slope ceiling adapter (5/12 pitch)
- 93062310** CLED no top access mounting plate (formerly CLEDFBRKTKT, CLEDMP)

Notes:

- 1 3/4" conduit hub for pendant mount
- 2 Measure outside dimension of existing housing
- 3 Contact factory for lead time
- 4 Requires Hubbell SCP-Remote to program sensor
- 5 0-10V Dimming built to order, check factory for lead time

CLED

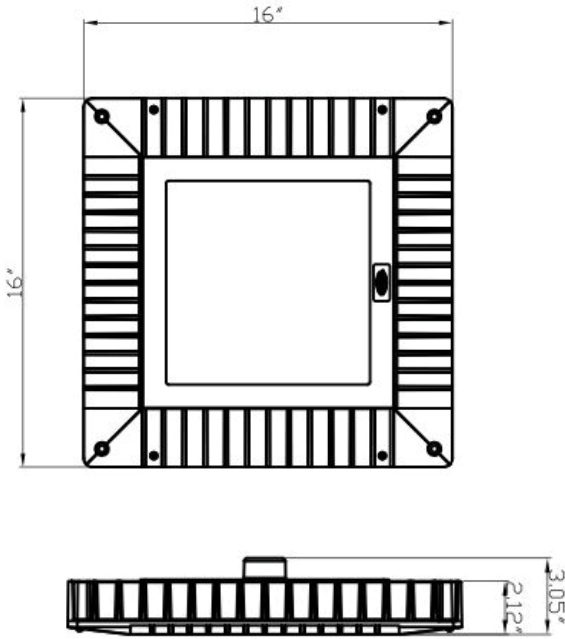
SURFACE MOUNT CANOPY

PERFORMANCE SUMMARY

Distribution	Engine	Delivered Lumens	No. of LEDs	CCT	Wattage	Lumens per watt	Replaces	BUG
Type V	LW-700	4,397	120	5100K	32	136	100-175W	B2-U1-G1
	LL-700	9,938	312	5100K	66	150	175-250W	B3-U2-G1
	HLHE-700	16,874	312	5100K	120	147	300-450W	B4-U1-G1
	XL-700	19,596	336	5100K	150	130	750-1000W	B4-U2-G1

*All at 70 CRI
 All Performance data has been acquired by physical test reports conducted to LM-79-08 standards in a controlled laboratory.

DIMENSIONS

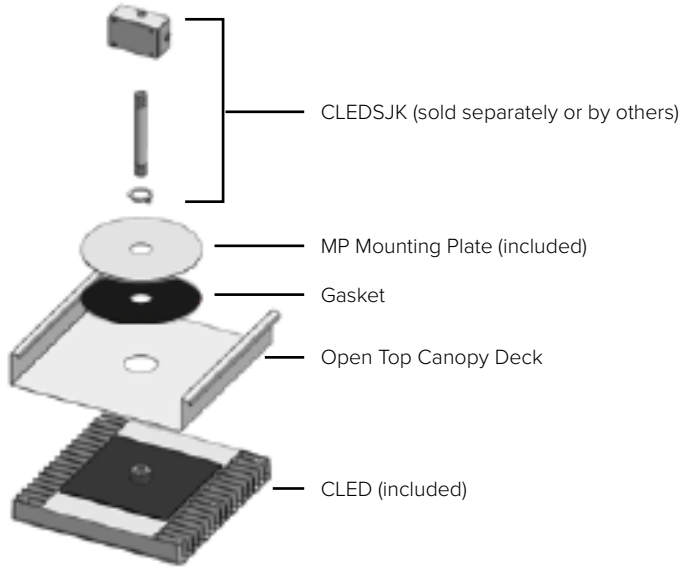


CLED

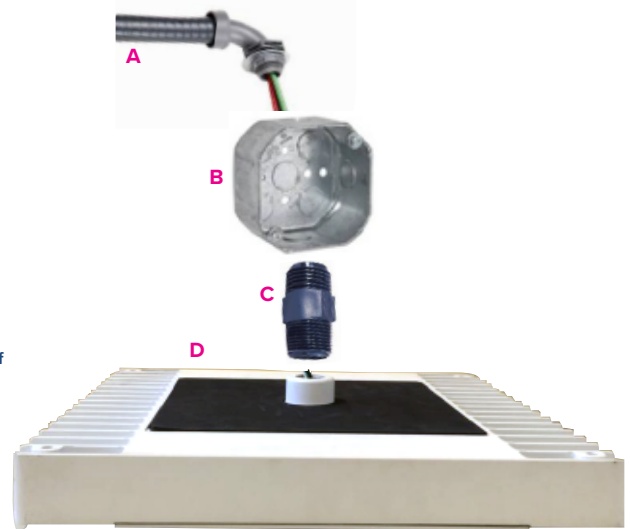
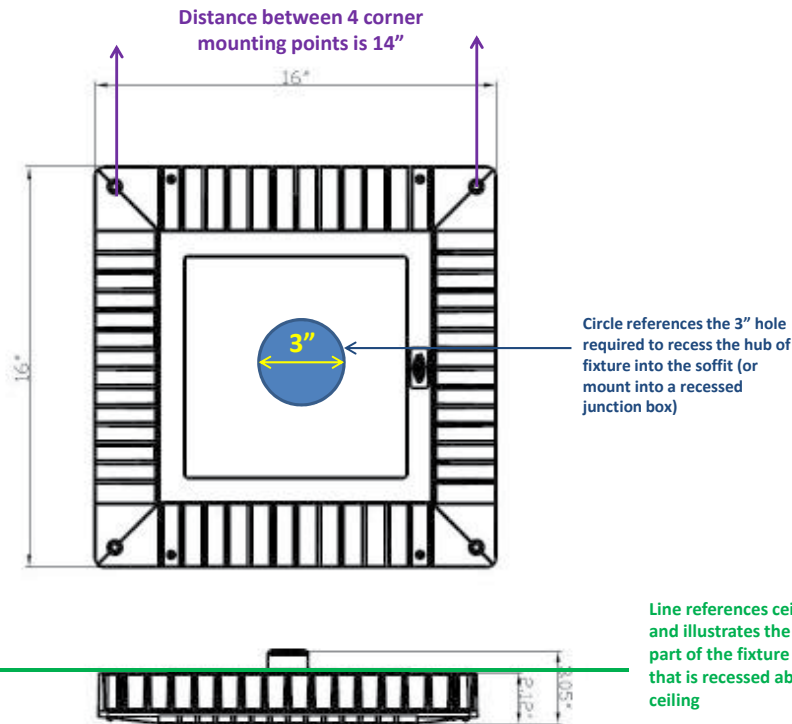
SURFACE MOUNT CANOPY

MOUNTING ILLUSTRATIONS

OPEN TOP CANOPY INSTALLATION INSTRUCTION



ENCLOSED SOFFIT/CANOPY ILLUSTRATION



- Pull existing whip and connect to 4" junction Box
- (shape not relevant) with cover supplied by others and make wiring connections inside
- Install 3/4" double threaded nipple supplied by others into D. CLED hub, pull seals through and make connection in side junction box (nipple to hold box in place.)
- Install 4 corner screws supplied by others to mount CLED tightly to bottom surface of canopy/soffit.

CLED

SURFACE MOUNT CANOPY

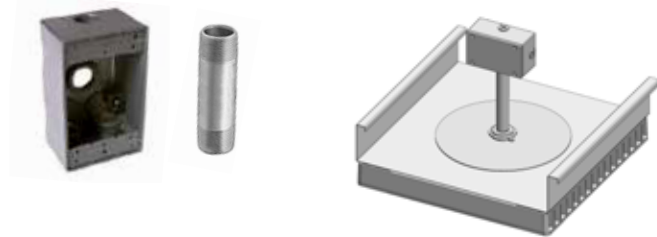
ACCESSORIES (ORDER SEPARATELY)

CLEDSJK

Illustration of CLEDSJK installed on CLED open top canopy

*CLEDSJK consists of Hubbell Raco 5330-0 Bell Box and 6" conduit stem.

Also use for pendant mounting of CLED



OCC PROGRAMMABLE MOTION CONTROL

(Factory Default is 10% light output)



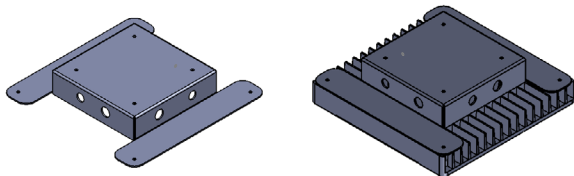
Fully adjustable high and low dimmed light levels; optional dusk to dawn control (Reference FSP-211 spec sheet for specifications)



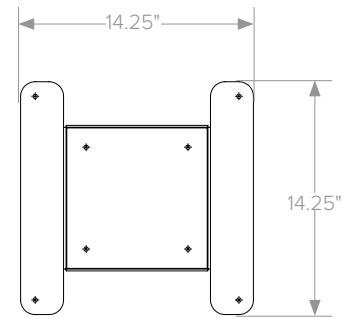
SCP-Remote Control for OCC (at least one per product required to program and control)

93081999 (CLEDSMK)

Used for surface mounting and wired with surface mounted conduit and/or in series wiring



Surface mount bracket/box to mount CLED to concrete ceilings or other installations where conduit is surface mounted

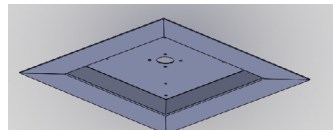


93088345 (CLEDREC22)

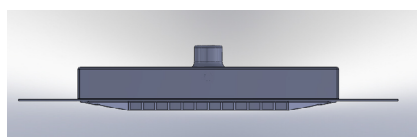
Used for mounting CLED fixture to 2' x 2' grid ceiling



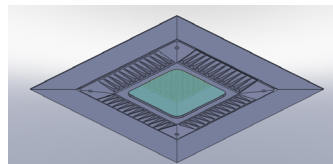
24" x 24" x 2" dimension
Side view of Adaptor



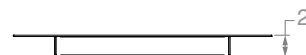
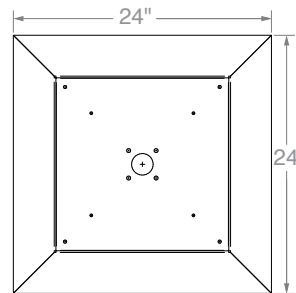
24" x 24" dimension
Bottom view of Adaptor



Side view of Adaptor with CLED installed



Bottom view of adaptor with CLED installed



CLED

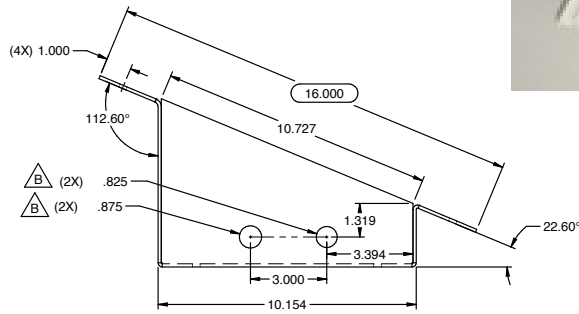
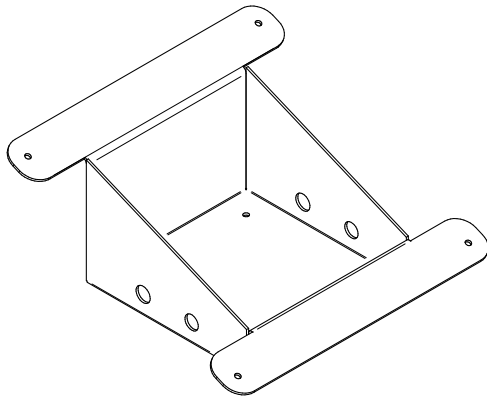
SURFACE MOUNT CANOPY

ACCESSORIES (CONT'D) (ORDER SEPARATELY)

93081764 SLOPE ADAPTOR

Used for mounting CLED to slope ceilings with 5/12 Slope
(Custom Slope available, consult factory)

Example

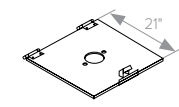
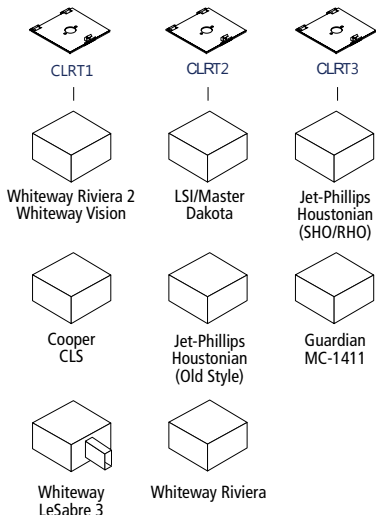


CLRT RETRO TRIM SYSTEM

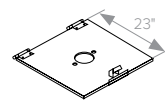


The CLRT Under Canopy Trim system is an innovative modular family of RetroTrims that are used to retrofit or expand the installation possibilities of the CLED. These CLRT trims are used in conjunction with standard CLED luminaires to provide you the most flexible array of solutions on the market today. In addition to the inventory and installation advantages of modular system, the CLED fixtures can be easily removed from the CLRK panels and re-used for a new installation when you replace your old canopy.

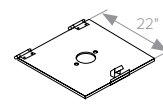
- Modular design for flexibility
- Used with CLED fixtures to create a multitude of product offerings
- White Lectorcote powder paint for superior longevity
- Can re-use CLED for new installations
- Easy, fast and cost-effective installation
- Improved lighting with less energy
- Incorporates all the CLED features and accessories



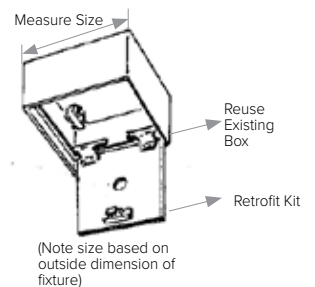
Surface mounted retrofit for Whiteway Vision, Riviera II, Thunderbird, 21" housing



Surface mounted retrofit for LSI Masters/ Dakota, 23" housing



Surface mounted retrofit for Jet Phillips Houstonian SHO/RHO, 22" housing



CLED

SURFACE MOUNT CANOPY

MOUNTING PLATES

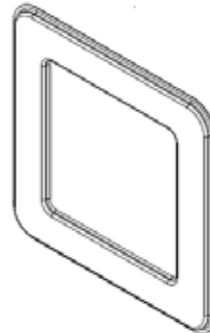


CLED18CP
13" x 23"*



CLEDENC
13" x 13"*

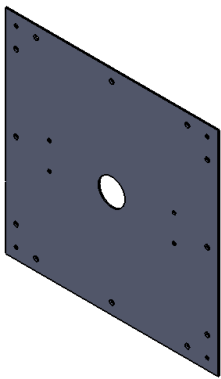
For gas station canopies, used for replacing LSI Encore with 10" opening



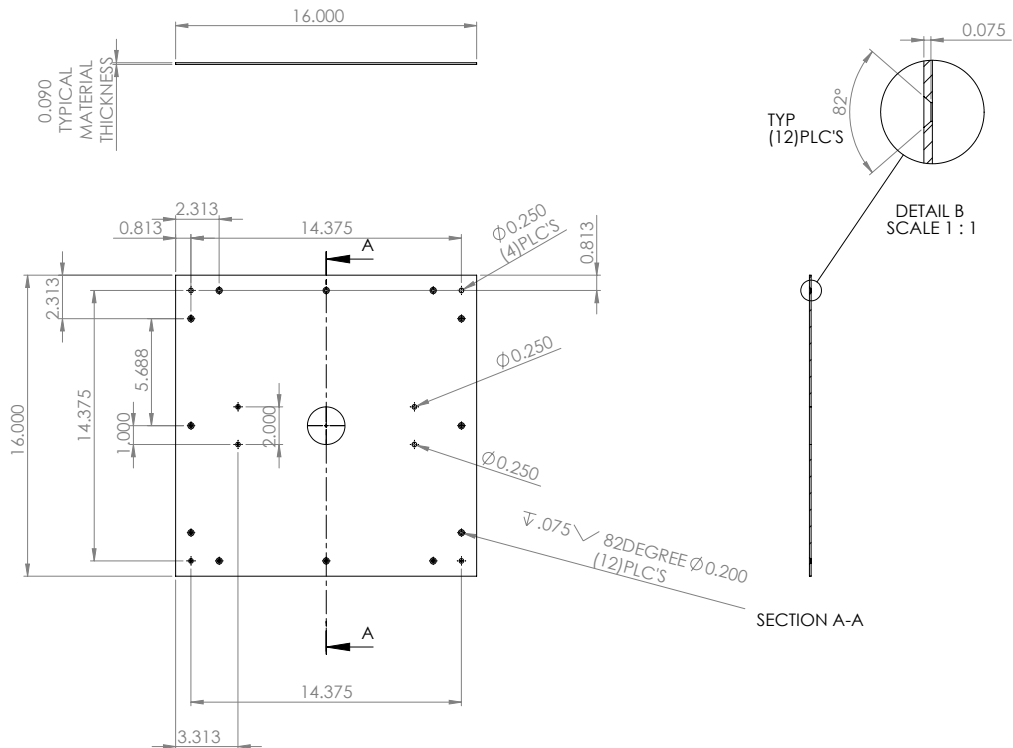
93072702
26" x 26"*
Decorative cover plate
(remove old box - cover plate)

*Mounting Hardware by others

93062310 (USE TO BE CALLED CLEDFLBRKTKIT & CLEDMP)



*16" x 16" to cover 12" x 12" opening or no top access (mounting hardware by others)



18" x 18", 20" x 20", 24" x 24" and custom sizes available upon request

DL DROP LENS

Drop Lens is field installed

