

DATE:	LOCATION:
TYPE:	PROJECT:
CATALOG #:	

FEATURES

- Engineered for durability for light to heavy industrial environment while maintaining an aesthetically appealing look for commercial and industrial applications
- An ideal solution for the unknown with selectable lumen and CCT technology making it a versatile stock solution
- Offers lumens up to 33,000 with a max of 161 LPW
- Designed for Ambient temperature -40°C up to 65°C
- Ideal solution for food processing, ice rink, car wash, natatorium, hangars and more



Typical Dimensions and Weights				
Sizes	(A) Length Inches (mm)	(B) Width Inches (mm)	(C) Height Inches (mm)	Weight lbs (kg)
1	18.35 (466)	12.32 (313)	2.11 (53.5)	10 (4.5)
2	23.31 (592)	13.15 (334)	2.11 (53.5)	15 (6.8)



SPECIFICATIONS

CONSTRUCTION

- Die cast aluminum housing with polycarbonate or glass lens. Providing durability for tough environments
- Thermally separated electronic and LED heat sink design allows for longevity in application
- Pre-installed 6' wet location power and dimming cords for simplified installation
- Wire guard available as accessories for enhanced durability
- Switches for lumen and CCT are securely locked behind a screw-on cover. Please consult installation instructions for complete details

INSTALLATION

- 3ft Chain with hook providing as default.
- Surface mount and 3/4" NPT pendant available as accessories.

ELECTRICAL

- Long-life +100,000hr LEDs at L70 at 25 °C
- Driver design life +50,000hr at 65 °C
- Total Input Wattage Size 1: 110W/ 130W/ 165W
Size 2: 170W/ 190W/ 210W
- Universal voltage Standard: 120–347V and 277-480V
- System power factor is >0.9 and THD is <20%
- Standard 10kV surge protection for demanding environments

CONTROLS

- Standard 0-10V, 10% dimming
- Field installable passive infrared (PIR) occupancy sensor provides discrete integration into the fixture maximizing sensor coverage range

CERTIFICATIONS

- All luminaires are built to UL 1598 standards, and bear appropriate cULus labels for wet locations
- IP65 rated
- IK07 rated lens, IK10 rated housing
- NSF Splash Zone 2- food equipment standard for non-food zones rated
- NEMA 250 Type 4X rated
- EMI: Title 47 CFR 15 Class A
- DLC® (DesignLights Consortium) Qualified, with some Premium Qualified configurations. Please refer to the DLC website for specific product qualifications at www.designlights.org

WARRANTY

- 5 year warranty

KEY DATA	
Lumen Range	15,290 - 33,180
Wattage Range	100–210
Efficacy Range (LPW)	Up to 161
Reported Life (Hours)	L70 @ 100,000

C65-LSCS

LINEAR HIGH BAY

DATE: _____ LOCATION: _____

TYPE: _____ PROJECT: _____

CATALOG #: _____

ORDERING GUIDE

Example: C65-1-LSCS-ED1-PCMD

CATALOG # _____

C65	LSCS	ED		
Model	Size - Lumen	Lumen Output & CCT	Dimming	Voltage
C65 Wet Location High Bay	1 Size 1: Switchable 16/19/ 24K 2 Size 2: Switchable 27/30/ 33K	LSCS Lumen Switchable/ CCT Switchable (4000K/ 5000K)	ED 0–10V Dimming	1 120–347V 5 277–480V
				Optics
				PCWD PC Wide GLWD Glass Wide PCMD PC Medium

Options (Leave Blank if None Needed)	
ELL20 ²	20W Emergency Battery Pack (CEC Title 20 Compliant), Installed
Cord Options	
F3C012	12', 3 conductor cord
F4C012	12', 4 conductor cord (for ELL20 option)
Cord with Plug Options (see NEMA Table Below)	
TL151	12', Twist lock plug, 15amp, 120V
TL201	12', Twist lock plug, 20amp, 120V
TL152	12', Twist lock plug, 15amp, 277V
TL202	12', Twist lock plug, 20amp, 277V
TL203	12', Twist lock plug, 20amp, 347V
TL204	12', Twist lock plug, 20amp, 480V

Voltage	TL15 15A Twist Lock	TL20 20A Twist Lock
120V	L5-15P	L5-20P
277V	L7-15P	L7-20P
347V	N/A	L24-20P
480V	N/A	L8-20P

Accessories	
<input type="checkbox"/>	93320389 Size 1 Wire Guard
<input type="checkbox"/>	93320514 Size 2 Wire Guard
<input type="checkbox"/>	93320515 Surface Mount / Pendant Mount
<input type="checkbox"/>	93320516 Retainer, optional L-shape bracket for additional retention.
<input type="checkbox"/>	93161798 Sensor ³
<input type="checkbox"/>	93161799 Remote
<input type="checkbox"/>	GLH5 #2 size cable with loop-end, 5' ⁴
<input type="checkbox"/>	GLH10 #2 size cable with loop-end, 10' ⁴
<input type="checkbox"/>	GLH20 #2 size cable with loop-end, 20' ⁴
<input type="checkbox"/>	93075756G 5', Y-Cable w/ hook ⁴
<input type="checkbox"/>	93075552G 10', Y-Cable w/ hook ⁴
<input type="checkbox"/>	93075553G 15', Y-Cable w/ hook ⁴
<input type="checkbox"/>	93075554G 20', Y-Cable w/ hook ⁴
<input type="checkbox"/>	93319278 10', Y-Cable w/ hook, WET RATED ⁴

Notes:
 1 Default switchable settings are indicated in **BOLD**.
 2 ELL20 is rated from 0° - 50°C ambient.
 3 Sensor is rated from -40° to 60°C ambient.
 4 Use with Standard Mounting option only.

C65-LSCS

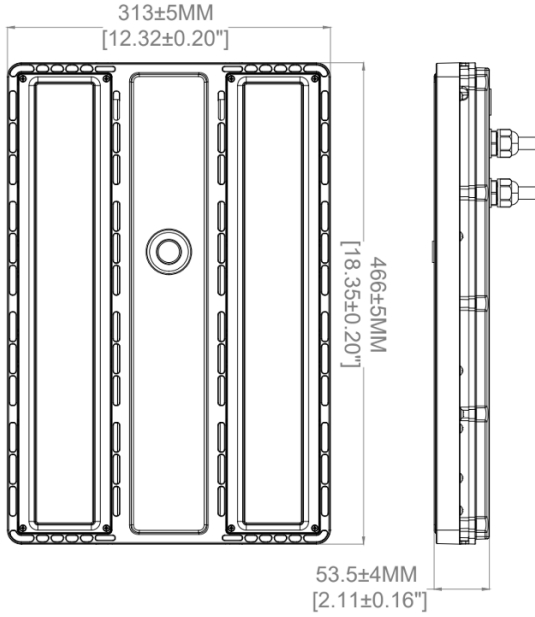
LINEAR HIGH BAY

PERFORMANCE DATA

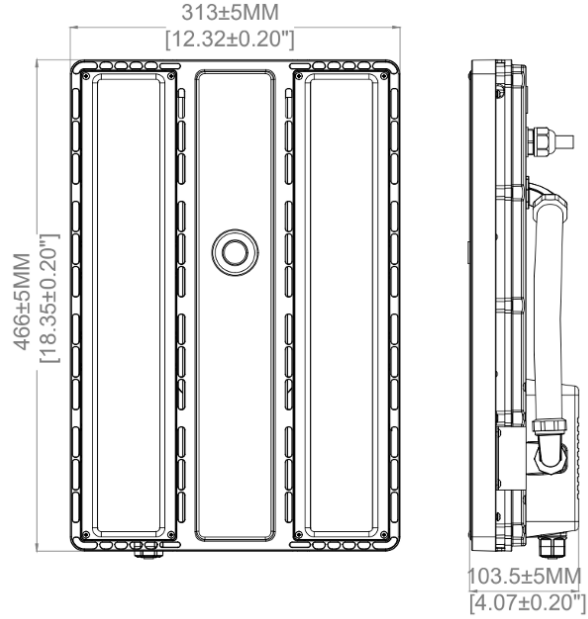
Catalog Number	Part #	Color Temp	Power Setting	Lumen Output	LPW
C65-1-LSCS-ED-1-PCMD	93318292	5000K	110	16720	152
			130	19500	150
			165	24255	144
		4000K	110	16280	148
			130	18980	146
			165	24090	143
C65-1-LSCS-ED-1-PCWD	93318315	5000K	110	15290	143
			130	17940	139
			165	22275	136
		4000K	110	15730	139
			130	18070	138
			165	22440	135
C65-1-LSCS-ED-1-GLWD	93318327	5000K	110	16500	150
			130	19110	147
			165	23595	143
		4000K	110	16280	148
			130	18850	145
			165	23430	142
C65-2-LSCS-ED-1-PCMD	93318369	5000K	170	27200	160
			190	30020	158
			210	33075	156
		4000K	170	27370	161
			190	30400	160
			210	33181	157
C65-2-LSCS-ED-1-PCWD	93318381	5000K	170	25670	151
			190	28310	149
			210	30870	147
		4000K	170	25840	152
			190	28690	151
			210	31080	148
C65-2-LSCS-ED-1-GLWD	93318393	5000K	170	27030	159
			190	29830	157
			210	32550	155
		4000K	170	27200	160
			190	30210	159
			210	32760	156

DIMENSIONS

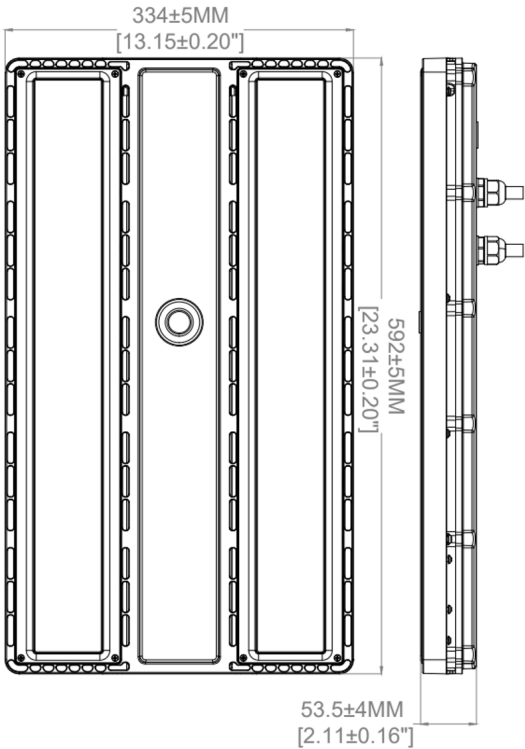
SIZE 1 Without Emergency



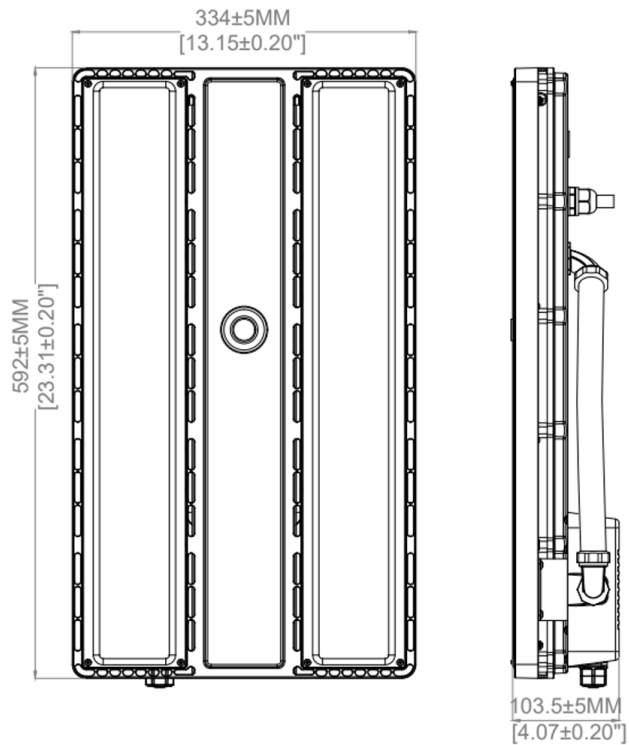
SIZE 1 With Emergency



SIZE 2 Without Emergency



SIZE 2 With Emergency



PHOTOMETRY

C65-1-LSCS-ED-1-GLWD_4000K

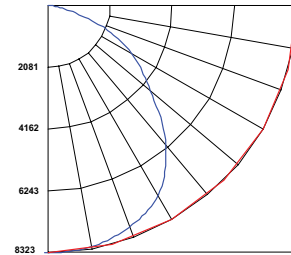
LUMINAIRE DATA

Test No.	70.402.24.061.69-01
Description	C65-LSCS Linear High Bay
Delivered Lumens	22,700
Watts	161.1
Efficacy	141
Mounting	Surface, suspended
Spacing Criterion	0° = 1.32 90° = 1.28

ZONAL LUMEN SUMMARY

Zone	Lumens	% Luminaire
0-30	6606.4	29.1
0-40	10909.67	48.1
0-60	18959.68	83.5
0-90	22685.92	99.9
0-180	22700.24	100

POLAR GRAPH



C65-1-LSCS-ED-1-PCMD_4000K

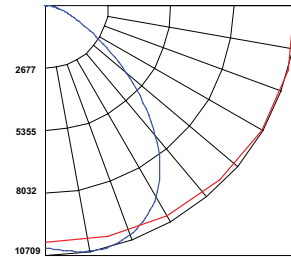
LUMINAIRE DATA

Test No.	70.402.24.061.69-03
Description	C65-LSCS Linear High Bay Size 1
Delivered Lumens	23,144
Watts	158.8
Efficacy	146
Mounting	Surface, suspended
Spacing Criterion	0° = 1.32 90° = 1.22

ZONAL LUMEN SUMMARY

Zone	Lumens	% Luminaire
0-30	8182.43	35.4
0-40	13242.64	57.2
0-60	20785.72	89.8
0-90	23128.34	99.9
0-180	23143.76	100

POLAR GRAPH



C65-1-LSCS-ED-1-PCWD_4000K

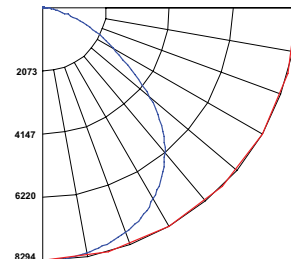
LUMINAIRE DATA

Test No.	70.402.24.061.69-02
Description	C65-LSCS Linear High Bay Size 1
Delivered Lumens	21,596
Watts	161.4
Efficacy	134
Mounting	Surface, suspended
Spacing Criterion	0° = 1.30 90° = 1.26

ZONAL LUMEN SUMMARY

Zone	Lumens	% Luminaire
0-30	6513.43	30.2
0-40	10704.82	49.6
0-60	18289.39	84.7
0-90	21581.83	99.9
0-180	21596.13	100

POLAR GRAPH



C65-2-LSCS-ED-1-GLWD_4000K

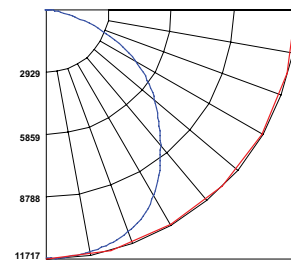
LUMINAIRE DATA

Test No.	70.402.24.061.69-07
Description	C65-LSCS Linear High Bay Size 2
Delivered Lumens	32,426
Watts	206
Efficacy	157
Mounting	Surface, suspended
Spacing Criterion	0° = 1.34 90° = 1.18

ZONAL LUMEN SUMMARY

Zone	Lumens	% Luminaire
0-30	9243.82	28.5
0-40	15145.41	46.7
0-60	26652.07	82.2
0-90	32408.09	99.9
0-180	32426.38	100

POLAR GRAPH



PHOTOMETRY (CONT'D)

C65-2-LSSC-ED-1-PCMD_4000K

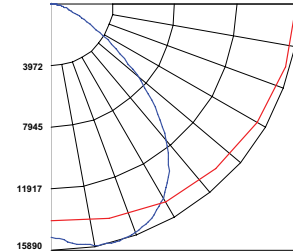
LUMINAIRE DATA

Test No.	I65-1-SOSC-10-5-PCMD-z-z
Description	C65-LSCS Linear High Bay Size 2
Delivered Lumens	33,098
Watts	206.2
Efficacy	157
Mounting	Surface, suspended
Spacing Criterion	0° = 1.38 90° = 1.26

ZONAL LUMEN SUMMARY

Zone	Lumens	% Luminaire
0-30	11779.34	35.6
0-40	19095.83	57.7
0-60	29967.59	90.5
0-90	33077.22	99.9
0-180	33097.6	100

POLAR GRAPH



C65-2-LSCS-ED-1-GLWD_4000K

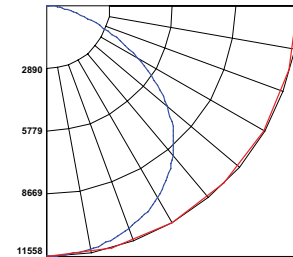
LUMINAIRE DATA

Test No.	70.402.24.061.69-08
Description	C65-LSCS Linear High Bay Size 2
Delivered Lumens	33,216
Watts	206.4
Efficacy	151
Mounting	Surface, suspended
Spacing Criterion	0° = 1.34 90° = 1.28

ZONAL LUMEN SUMMARY

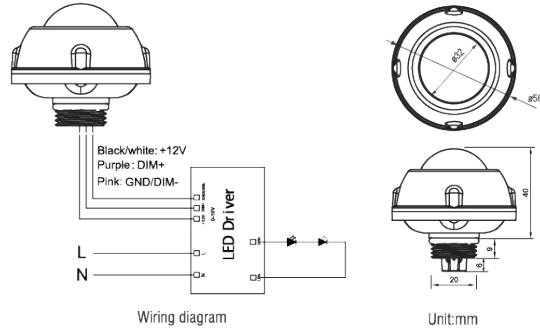
Zone	Lumens	% Luminaire
0-30	9134.37	29.3
0-40	15079.34	48.3
0-60	26154.69	83.8
0-90	31197.65	99.9
0-180	31215.57	100

POLAR GRAPH



DATE: _____ LOCATION: _____
 TYPE: _____ PROJECT: _____
 CATALOG #: _____

HB03DPR MOTION SENSOR ACCESSORY



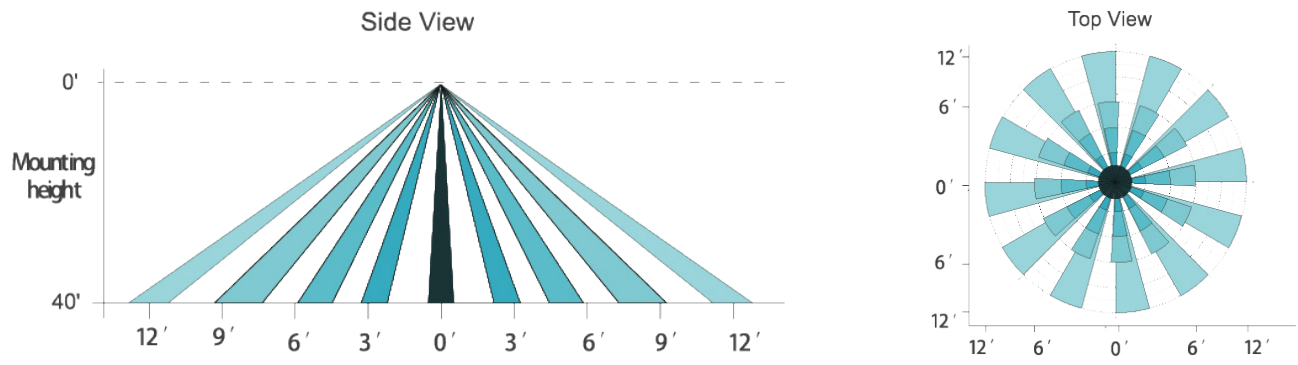
TECHNICAL DATA	
Operating Voltage:	12±2V DC
Operating Current	30mA
Output:	DIM 0-10V
Stand-by Power:	<0.5W
Brightness:	0%-100% Quick Setting: 70%/80%/90%/100%
Hold Time:	10s/1min/10min/30min
Daylight Threshold:	10Lux/30Lux/50Lux/100Lux/Disable
Stand-by Time:	1min/30min/60min + ∞

TECHNICAL DATA	
Stand-by Dimming Level:	10%/20%/30%/50%
Detection Angle:	≤120° (wall mounted), 360° (Ceiling mounted)
Mounting Height:	≤12m/39.37ft (Ceiling mounted)
Detection Range:	Radius, 2-4m/6.58-13.12ft (Ceiling mounted)
Operating Temperature:	-30°C~+60°C
IP Rating:	IP65 (Mounted on the light fixture)
Warm-up Period	50S

Note: Default setting - Brightness: 100%, Hold time: 1min, Stand-by dimming level: 20%, Stand-by time: 1min, Sensitivity: 100% (non-adjustable) Daylight: Disable.

DETECTION COVERAGE

This figure indicates the maximum distance at the highest mounting height with 100% sensitivity.

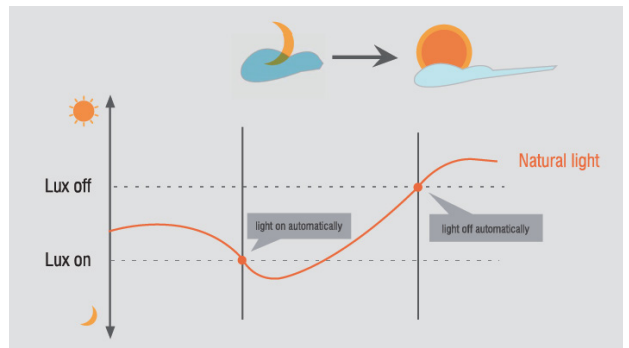


LUX ON/OFF

Adopted dual PD technology, PRC Motion Sensor is able to differentiate artificial light brightness from natural light after installed inside the fixture, and automatically turn off light when ambient brightness exceeds preset lux level.

Preconditions to use the Lux-off function:

1. Stand-by time is + ∞
2. Stand-by dimming level is on 10%, 20%, 30%, or 50%
3. Daylight threshold is on 10Lux, 30Lux, 50Lux, or 100Lux (About 20% error between actual and reference values).



DATE:	LOCATION:
TYPE:	PROJECT:
CATALOG #:	

HB03DPR-REMOTE



Display Area

BRIGHTNESS (70%/80%/90%/100%)
DAYLIGHT (10lx/30lx/50lx/100lx)
STANDBY DIM (10%/20%/30%/50%)

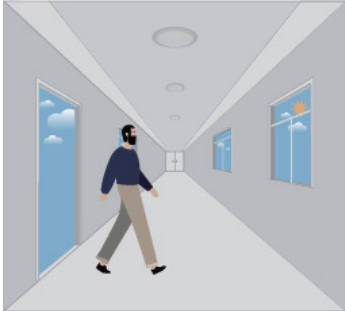
HOLD TIME (10S/1min/10min/30min)
SENSITIVITY (20%/50%/75%/100%)
STANDBY TIME (+ ∞ /1min/30min/60min)

Button Setting Area

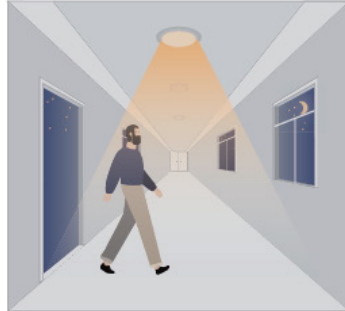
- ON/OFF** (Long press the "ON/OFF" button until the brightness indicator light is on(First-row),Press to turn on or turn off the fixture.)
- BRIGHTNESS** (Press to adjust dimming level 70%/80%/90%/100%.)
- SEND** (Press to save settings after each change.The indicator light confirms the save setting.)
- HOLD TIME** (Press to adjust hold time 10s/1min/10min/30min.)
- DAYLIGHT** (Long press the button until the daylight indicator light is on,press to adjust daylight threshold 10lx/30lx/50lx/100lx.)
- SENSITIVITY** (Press to adjust sensitivity 20%/50%/75%/100%.) Note: PIR Motion Sensor have no sensitivity setting,the default 100%.
- STANDBY DIM** (Press to adjust stand-by dimming level 10%/20%/30%/50%.)
- STANDBY TIME** (Press to adjust stand-by time +∞/1min/30min/60min.)
 Note: "+∞" means unlimited stand-by time,and the light control mode is the light control priority mode, otherwise it's the light threshold mode.
- RESET**
 Press "RESET"button,products with DIP switch will be controlled by DIP switches;Otherwise all the setting will change,which is Brightness 70%/ Hold time 10s/ Sensitivity 20%/ Daylight threshold disable/Stand-by dimming level 10% / Stand-by time+∞.
- TEST**
 The button "TEST" is for testing purpose after debugging.Pressing this button,the sensor goes to test mode(hold time is only 3s).
- Press to increase brightness(0-100%).
- Press to reduce brightness(100%-0%).

HB03DPR PERFORMANCE

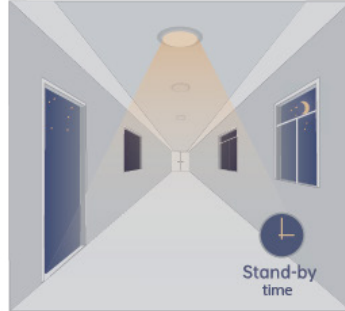
1. AUTOMATIC ON/OFF FUNCTION



With sufficient daylight, even when motion is detected, light will remain OFF.



With insufficient daylight, the sensor turns light ON when motion gets detected.

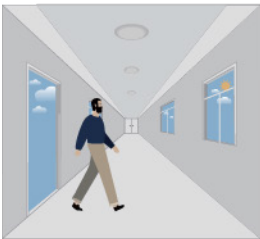


Light dims to stand-by level if no motion detected after hold time.

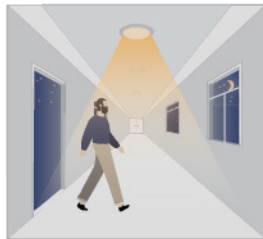


Light OFF when ambient lux level is higher than preset lux amount.

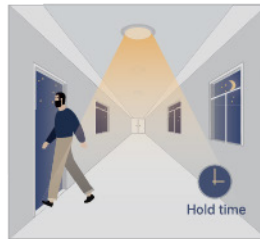
2. CORRIDOR FUNCTION, BI-LEVEL DIMMABLE



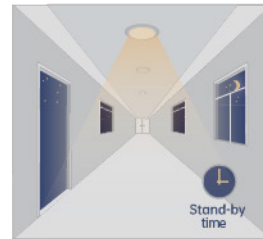
With sufficient daylight, the sensor keeps light OFF even motion gets detected, daylight function is on.



With insufficient daylight, the sensor turns light ON when motion gets detected.



After there's no motion detected, the sensor keeps light ON brightness setting for hold time.

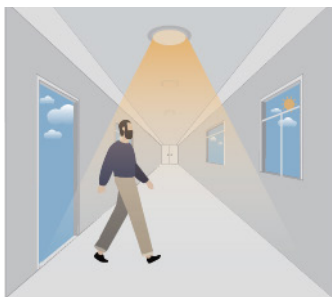


After holdtime, sensor dims light to stand-by dimming level for stand-by time.



The sensor turns OFF light automatically after the stand-by time when there's no motion detected.

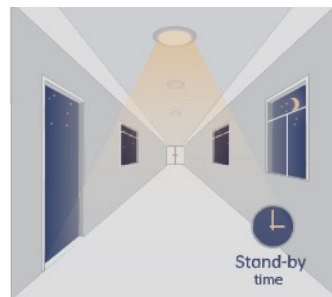
3. DAYLIGHT DISABLE



The sensor turns light ON when motion gets detected.



The sensor keeps light ON for hold time after motion leaves.



After hold time, sensor dims light to stand-by dimming level for stand-by time.



The sensor turns OFF light automatically after the stand-by time when there's no motion detected.