

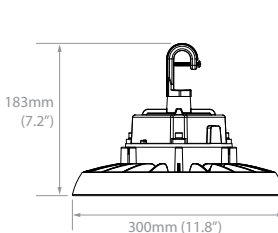
tradeSELECT®

## FEATURES

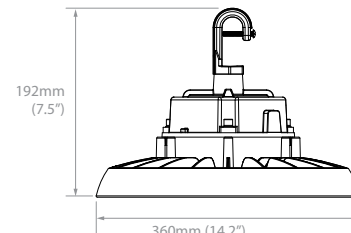
- Switchable lumen and CCT technologies maximize inventory versatility and flexibility
- 120-347V 0-10V driver
- Optional 'plug and play' occupancy sensor is easily installed into the center of the fixture
- Provides lumen packages from 15,500 to 35,040 lumens, allowing for use in a variety of applications including food processing, wash down, warehouses, gyms, garden centers and mezzanines
- Two reflector options deliver glare reduction and aesthetic customization
- Efficacy up to 162 LPW assures energy savings over traditional high bay luminaires



Shown with sensor installed



**SIZE 1**  
7.1lbs



**SIZE 2**  
11.1lbs

## SPECIFICATIONS

### CONSTRUCTION

- Die cast aluminum housing with polycarbonate lens provides durability for rugged environments
- Thermally separated electronic and LED heat sink design allows for longevity in application
- Pre-installed 6' wet location power and dimming cords for simplified installation

### INSTALLATION

- Pendant mount from 1/2" NPT hook is standard
- Additional mounting accessories may be ordered separately
- Weight: Size 1: 7.1 lbs; Size 2: 11.1 lbs

### ELECTRICAL

- Long-life +50,000hr LEDs at L70
- Total Input Wattage Size 1: 100W/ 120W/ 150W Size 2: 150W/ 200W/ 240W
- Universal voltage Standard (120–347V)
- Standard 6kV surge protection for demanding environments

### CONTROLS

- Standard 0-10V, 10% dimming
- White field installable passive infrared (PIR) occupancy sensor provides discrete integration into the fixture maximizing sensor coverage range

### CERTIFICATIONS

- All luminaires are built to UL 1598 standards, and bear appropriate cULus labels for wet locations
- Ambient Operating Temperature range:
  - Without Sensor: (Standard) -40°C to 50°C (-40°F to 122°F)
  - With Sensor: -30°C to 50°C (-22°F to 122°F)
- IP65 rated
- IK07 impact rated
- NSF Splash Zone 2- food equipment standard for non-food zones rated
- NEMA 250 Type 4X rated

### WARRANTY

- 5 year warranty

KEY DATA	
Lumen Range	15,500 - 35,040
Wattage Range	100–240
Efficacy Range (LPW)	Up to 162
Reported Life (Hours)	L70 @ 50,000

ORDERING GUIDE

CATALOG #

CRN2		LSCS	ED	
Model	Size	Lumen Output & CCT	Dimming	Voltage
CRN2 Wet Location/NSF High Bay	1 Size 1: 100/120/150W 2 Size 2: 150/200/240W <sup>1</sup>	LSCS Lumen Switchable/ CCT Switchable	ED 0–10V Dimming	MV 120–347V

Notes:  
1 Size 2 only available with Voltage MV

STOCK GUIDE

Catalog Number	Part #	Color Temperature	Lumen Output Setting	Wattage	Lumen Output	LPW	Voltage
CRN2-1-LSCS-EDMV	SKU: 93167312	4000K	LOW	100	15800	158	120-347V
			MED	120	18600	155	
			HIGH	150	21750	145	
		5000K	LOW	100	15500	155	
			MED	120	18360	153	
			HIGH	150	21300	142	
CRN2-2-LSCS-EDMV	SKU: 93167313	4000K	LOW	150	24300	162	
			MED	200	30600	153	
			HIGH	240	35040	146	
		5000K	LOW	150	24000	160	
			MED	200	30200	151	
			HIGH	240	34320	143	
LSCS default setting is 5000K, HIGH lumen output							

DIMENSIONS

Height of installation 13-40ft

26° 20° 13° 13° 20° 26°

100% 75% 50% 25%

1.48" (37.5mm)  
0.47" (12mm)  
0.77" (19.5mm)





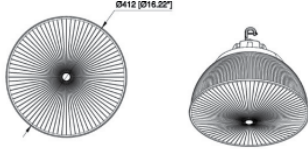


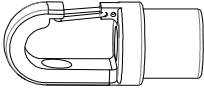
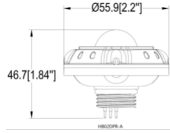
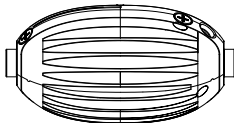
Bottom view with sensor installed

SENSOR COVERAGE

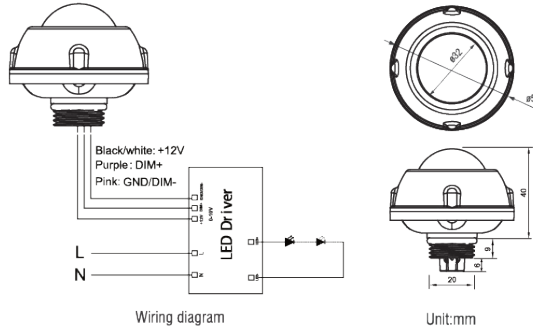
STANDARD HOOK MOUNT:  
1/2" NPT (INCLUDED)

DATE:	LOCATION:
TYPE:	PROJECT:
CATALOG #:	

## ACCESSORIES

Accessories (Optional)	Image	Description	Part #	Dimensions/Notes
Safety Tether		CRN2-TLR	93130251	Cable length: 6'
Wire Guard		Size 1: CRN2-1-WG	93161788	Size 1: H 1.89"; Dia 10.25" Size 2: H 2.09", Dia 12.4" Min Order Qty = 10
		Size 2: CRN2-2-WG	93161789	
Full Wire Guard		Size 1: CRN2-1-FWG	93161790	Size 1: H 7.86" Dia 17.88" Size 2: H 8.15" Dia 17.88"
		Size 2: CRN2-2-FWG	93161791	
Polycarbonate Refractor		Size 1: CRN2-1-PC16	93161792	Size 1 & 2: H 6.3" Dia 16" Lumen Output Multiplier: .98
		Size 2: CRN2-2-PC16	93161793	
Polycarbonate Drop Lens		Sizes 1 & 2: CRN2-PCL	93161794	Drop lens adds: 100W: H 3.6cm (1.4 in.) 150W: H 3.6cm (1.4 in.) 200 –240W: H 4.1cm (1.6 in.) Lumen Output Multiplier: .93
Aluminum Reflector		Size 1: CRN2-1-AL16	93161795	Size 1: H 6.45"; Dia 16" Size 2: H 7.15"; Dia 18" Lumen Output Multiplier: .90
		Size 2: CRN2-2-AL18	93161796	
Wall Mount Bracket*		Size 1: CRN2-1-YM Part #: 93161797 Size 2: CRN2-YM Part #: 93130248	93130249	Total Height of assembly from top of bracket to bottom of fixture: Size 1: H 6.3" Size 2: H 7.1" 200 –240W: 22.8cm (9 in.) * Pendant mount slot on yoke is 1/2". Use CRN-YOKE-ADPT to convert to 3/4"
Snaphook		Sizes 1 & 2	93130250	Dimensions Notes: Snap Hook for 3/4" Conduit
PIR Occupancy Sensor		Sensor: HB03DPR	93161798	Notes: 1. Easy plug-and-play install to center face of fixture; maintains IP65 rating 2. Sensor requires remote if programming is desired 3. HB03DPR sensor is not compatible with CRN2-ELL40 emergency battery
		Remote: HB03DPR-REMOTE	93161799	
Emergency Battery		CRN2-ELL40	93161800	H: 10.78"; W: 5.57" Note: CRN2-ELL40 emergency battery is not compatible with HB03DPR sensor

## HB03DPR MOTION SENSOR ACCESSORY



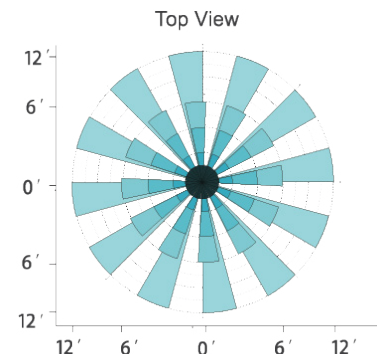
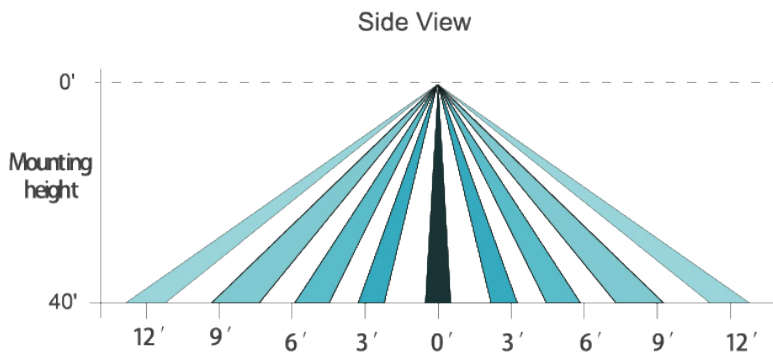
TECHNICAL DATA	
Operating Voltage:	12±2V DC
Operating Current	30mA
Output:	DIM 0-10V
Stand-by Power:	<0.5W
Brightness:	0%-100% Quick Setting: 70%/80%/90%/100%
Hold Time:	10s/1min/10min/30min
Daylight Threshold:	10Lux/30Lux/50Lux/100Lux/Disable
Stand-by Time:	1min/30min/60min + ∞

TECHNICAL DATA	
Stand-by Dimming Level:	10%/20%/30%/50%
Detection Angle:	≤120° (wall mounted), 360° (Ceiling mounted)
Mounting Height:	≤12m/39.37ft (Ceiling mounted)
Detection Range:	Radius, 2-4m/6.58-13.12ft (Ceiling mounted)
Operating Temperature:	-30°C~+60°C
IP Rating:	IP65 (Mounted on the light fixture)
Warm-up Period	50S

Note: Default setting - Brightness: 100%, Hold time: 1min, Stand-by dimming level: 20%, Stand-by time: 1min, Sensitivity: 100% (non-adjustable) Daylight: Disable.

## DETECTION COVERAGE

This figure indicates the maximum distance at the highest mounting height with 100% sensitivity.

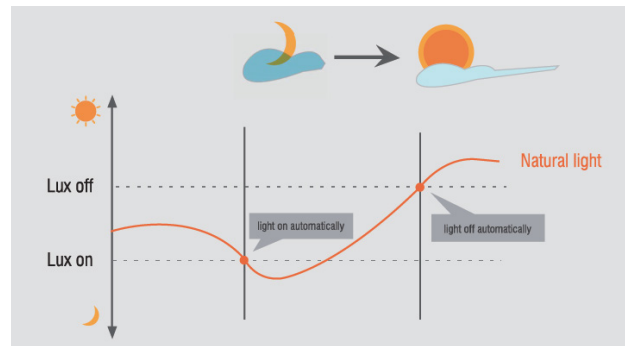


## LUX ON/OFF

Adopted dual PD technology, PRC Motion Sensor is able to differentiate artificial light brightness from natural light after installed inside the fixture, and automatically turn off light when ambient brightness exceeds preset lux level.

### Preconditions to use the Lux-off function:

1. Stand-by time is + ∞
2. Stand-by dimming level is on 10%, 20%, 30%, or 50%
3. Daylight threshold is on 10Lux, 30Lux, 50Lux, or 100Lux (About 20% error between actual and reference values).



**HB03DPR-REMOTE**



**Display Area**

BRIGHTNESS (70%/80%/90%/100%)  
DAYLIGHT (10lx/30lx/50lx/100lx)  
STANDBY DIM (10%/20%/30%/50%)

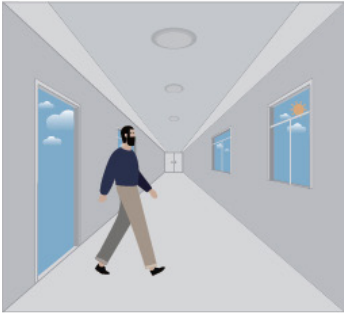
HOLD TIME (10S/1min/10min/30min)  
SENSITIVITY (20%/50%/75%/100%)  
STANDBY TIME (+ ∞ /1min/30min/60min)

**Button Setting Area**

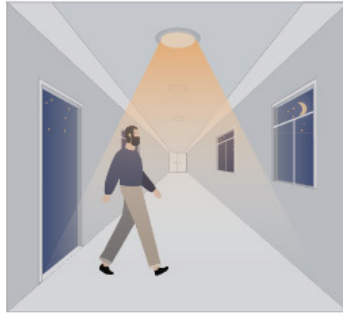
- ON/OFF** (Long press the "ON/OFF" button until the brightness indicator light is on(First-row).Press to turn on or turn off the fixture.)
- BRIGHTNESS** (Press to adjust dimming level 70%/80%/90%/100%.)
- SEND** (Press to save settings after each change.The indicator light confirms the save setting.)
- HOLD TIME** (Press to adjust hold time 10s/1min/10min/30min.)
- DAYLIGHT** (Long press the button until the daylight indicator light is on,press to adjust daylight threshold 10lx/30lx/50lx/100lx.)
- SENSITIVITY** (Press to adjust sensitivity 20%/50%/75%/100%.) Note: PIR Motion Sensor have no sensitivity setting,the default 100%.
- STANDBY DIM** (Press to adjust stand-by dimming level 10%/20%/30%/50%.)
- STANDBY TIME** (Press to adjust stand-by time + ∞ /1min/30min/60min.)  
Note: "+ ∞ "means unlimited stand-by time,and the light control mode is the light control priority mode, otherwise it's the light threshold mode.
- RESET**  
Press "RESET"button,products with DIP switch will be controlled by DIP switches;Otherwise all the setting will change,which is Brightness 70%/ Hold time 10s/ Sensitivity 20%/ Daylight threshold disable/Stand-by dimming level 10% / Stand-by time+∞.
- TEST**  
The button "TEST" is for testing purpose after debugging.Pressing this button,the sensor goes to test mode(hold time is only 3s).
- +** Press to increase brightness(0-100%).
- Press to reduce brightness(100%-0%).

## HB03DPR PERFORMANCE

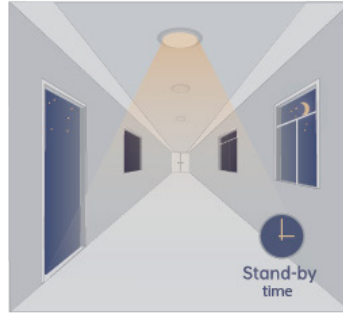
### 1. Automatic On/Off Function



With sufficient daylight, even when motion is detected, light will remain OFF.



With insufficient daylight, the sensor turns light ON when motion gets detected.

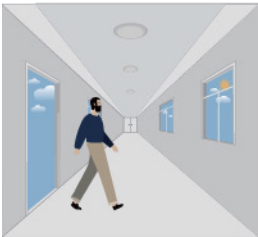


Light dims to stand-by level if no motion detected after hold time.

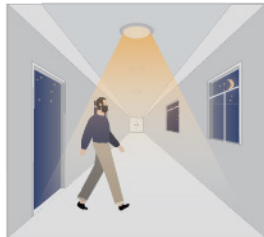


Light OFF when ambient lux level is higher than preset lux amount.

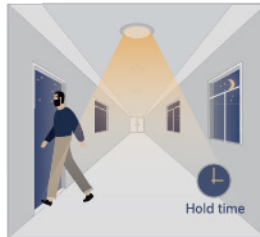
### 2. Corridor Function, Bi-level Dimmable



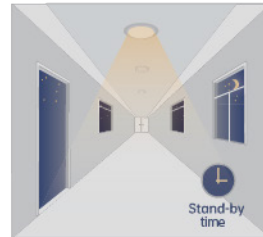
With sufficient daylight, the sensor keeps light OFF even motion gets detected, daylight function is on.



With insufficient daylight, the sensor turns light ON when motion gets detected.



After there's no motion detected, the sensor keeps light ON brightness setting for hold time.

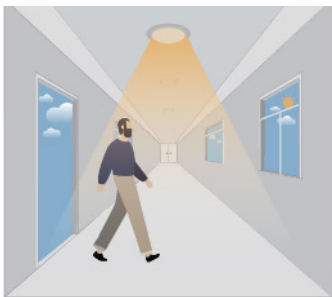


After holdtime, sensor dims light to stand-by dimming level for stand-by time.



The sensor turns OFF light automatically after the stand-by time when there's no motion detected.

### 3. Daylight Disable



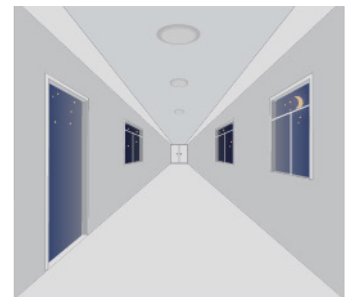
The sensor turns light ON when motion gets detected.



The sensor keeps light ON for hold time after motion leaves.



After hold time, sensor dims light to stand-by dimming level for stand-by time.



The sensor turns OFF light automatically after the stand-by time when there's no motion detected.