

FEATURES

- Surface mount, wall mount
- Superior color consistency within a 3-step MacAdam ellipse and greater than 80 CRI
- Available in 2', 4' or 8' lengths
- Optional 90 or 120 min integral emergency battery pack (CEC Title 20 Compliant)
- Curved acrylic or curved polycarbonate lens options, both with wide distribution
- Occupancy controlled dimming of the LEDs increases energy savings while maintaining base light levels in stairwells at all times (see Occupancy Sensor section below)



CONTROLS TECHNOLOGY



SPECIFICATIONS

CONSTRUCTION

- Housing, wireway, and ends are formed from code-gauge steel.
- Housing components act as heat sink for LED heat dissipation.
- White painted parts are treated with a five-stage phosphate bonding process and finished with high reflectance baked enamel

OPTICS

- Shielded with 100% frosted prismatic acrylic lens

INSTALLATION

- Knockouts are provided for electrical access and mounting

ELECTRICAL

- Long-life LEDs are rated for 60,000 hours at L80 lumen maintenance.
- Standard 0–10V dimming with High/Low integrated control outputs
- Superior drivers and long-life LEDs provide quality illumination for prolonged service life.
- Drivers < 10% THD at 120V, power factor > 0.95

CONTROLS

- NX Lighting Controls provides options for standalone and networked integrated sensor with wired or wireless connectivity for NX system deployments
- NX Connect is a standalone wireless deployment for room based applications using wireless enabled and battery operated devices
- Default settings: 15 min. unoccupied sensor dims luminaire to 50% output, once occupied luminaire returns to 100% output; never turning entirely off. LED indicator for easy verification of coverage. Coverage is 1:2.75 (mounting height: coverage ratio) up to 12', minimum 8' mounting height.

CERTIFICATIONS

- All luminaires are built to UL 1598 standards, and bear appropriate CSA c/US labels.
- Damp location labeling is standard
- CSA certified to UL 924 standards with battery pack or DTS (Dimming Bypass Module) options
- Emergency battery pack options are California Energy Commission (CEC) Title 20 compliant
- Adheres to LM79, LM80, and TM21 industry standards.

CERTIFICATIONS (CONTINUED)

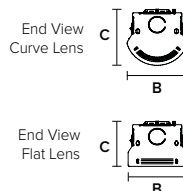
- The DTS, Dimming Bypass Module, is for emergency circuit control loads including sensors and wireless systems CSA certified to UL 924. See wiring diagram.
- DLC® (DesignLights Consortium) Qualified. Please refer to the DLC website for specific product qualifications at www.designlights.org
- Product configurations not including battery packs or controls meet federal procurement law requirements under the Trade Agreements Act (FAR 52.225-11) See Buy America(n) Solutions

WARRANTY

- 5 year warranty



SERVICE PROGRAMS

STOCK

Typical Dimensions and Weights					
Sizes	(B) Width Inches (mm)		(C) Height Inches (mm)		Weight lbs (kg)
	Curve Lens	Flat Lens	Curve Lens	Flat Lens	
2'					4.0 (1.8)
4'	3.11 (79)	3.00 (76)	3.06 (78)	2.44 (62)	6.0 (2.7)
8'					12.0 (5.4)

ORDERING GUIDE

Example: ESL4-40ML-FAW-EDU-NXOS

CATALOG #

ESL						W		ED					
Model		Size	Color Temp		Nominal Lumens ¹		Lens		Distribution		Driver		
ESL	Escalate Stairwell Luminaire	2' 2'	30	3000K	VW	2' (1700), 4' (3300), 8' (6600)		FA	Frosted Acrylic	W	Wide Distribution	ED	0–10V Dimming ²
		4' 4'	35	3500K	MW	2' (1750), 4' (3500), 8' (6500)		FP	Frosted Polycarbonate			DALIP	Powered by DALI ³
		8' 8'	40	4000K	LW	2' (2000), 4' (4000), 8' (8000)							
			50	5000K	ML	2' (2200), 4' (4500), 8' (8900)							
					HL	4' (5800), 8' (11,600)							
					See Lumen Tables below.								

Voltage	Options	Control Options ⁹
U 120V-277V 347 347V	ELL14 Emergency Battery Pack, 10W ^{3, 4, 5, 6} ELL14H2 Emergency Battery Pack, 2-Hour Run Time ^{3, 4, 5, 6, 7} DTS Dimming Bypass Module ^{3, 5, 6, 8} GLR Fast Blow Fuse	<u>NX Lighting Controls</u> <u>Networked Wireless</u> NXWOM NX Networked Wireless Enabled Integral NXSMP2-OMNI PIR Occupancy Sensor with Automatic Dimming Photocell and Bluetooth Programming ¹⁰ <u>Independent Control</u> NXCS NX Connect NXC-WIZ20 Wireless Indoor Occupancy & Photocell Sensor ^{3, 11, 12, 13} BTSO12F Bluetooth® Programmable, BTSMP-OMNI PIR Occupancy Sensor with Automatic Dimming Photocell and 360° Lens ¹⁰ <u>Other Lighting Controls</u> <u>Independent Control</u> HFU High Frequency Ultra-sonic Occupancy Sensor ¹⁰ LESO Leviton Solo PIR Occupancy/Daylight Sensor ¹⁰

Accessories

☐ LESO-RMT Leviton Solo Sensor IR Remote

Notes:

- 1 Refer to performance tables for exact values and available lumen outputs for fixture size
- 2 External dimming leads not available
- 3 Not available with 347V
- 4 To determine lumen output in emergency mode, multiply the battery pack wattage by the fixture lumens per watt (LPW)
- 5 For compatibility with Dual-Lite Litegear inverters, contact lighting representative
- 6 Not available with 2ft size
- 7 Not available for use in Canada
- 8 For emergency circuit control loads including sensors and wireless systems CSA certified to UL 924. See wiring diagram.

All Controls⁹ Minimum ambient temperature: 0°C (32°F)**NX Lighting Controls Options**

- 10 Not available with DALIP driver option
- 11 NX Connect devices can be configured using the NX Connect Mobile App, available in the Apple App Store
- 12 NX Connect devices are not compatible with NX Networked Wireless or Wired Options
- 13 Only available with DALIP driver option

DELIVERED LUMENS

Fixture	3000K			3500K			4000K			5000K		
	LUMENS	WATTS	LPW	LUMENS	WATTS	LPW	LUMENS	WATTS	LPW	LUMENS	WATTS	LPW
ESL2-VW	1630	13.8	118	1659	13.8	120	1681	13.8	122	1736	13.8	126
ESL2-MW	2162	18.2	119	2201	18.2	121	2229	18.2	122	2303	18.20	127
ESL2-LW	2401	20.4	118	2444	20.4	120	2475	20.4	121	2557	20.4	125
ESL2-ML	3391	29.0	117	3452	29.0	119	3496	29.0	121	3611	29.0	125
ESL4-VW	3221	26.7	121	3279	26.7	123	3321	26.7	124	3430	26.7	128
ESL4-MW	3591	30.4	118	3656	30.4	120	3702	30.4	122	3824	30.4	126
ESL4-LW	3972	34.4	116	4043	34.4	118	4095	34.4	119	4230	34.4	123
ESL4-ML	4475	40.1	112	4556	40.1	114	4614	40.1	115	4766	40.1	119
ESL4-HL	5658	49.5	114	5760	49.5	116	5833	49.5	118	6026	49.5	122
ESL8-VW	6442	53.4	121	6558	53.4	123	6642	53.4	124	6861	53.4	128
ESL8-MW	7182	60.8	118	7311	60.8	120	7405	60.8	122	7649	60.8	126
ESL8-LW	7944	68.8	116	8087	68.8	118	8190	68.8	119	8460	68.8	123
ESL8-ML	8950	80.2	112	9111	80.2	114	9227	80.2	115	9532	80.2	119
ESL8-HL	11316	99	114	11520	99	116	11667	99	118	12052	99	122

MAX AMBIENT OPERATING TEMPERATURE




Ambient Temp. for Driver Availability		
Voltage	Lumen Package	Ceiling/Surface Mount
2'	VW	35
	MW	35
	LW	35
	ML	35
4'	VW	30
	MW	30
	LW	30
	ML	30
	HL	25
8'	VW	30
	MW	30
	LW	30
	ML	30
	HL	25

PROJECTED LUMEN MAINTENANCE

Calculation Method	Ambient Temp	25,000 hrs	50,000 hrs	60,000 hrs *
TM-21-11	25C/77F	0.93	0.87	0.85
TM-21-22	25C/77F	0.94	0.87	0.85

* Lumen maintenance values calculated per TM-21 using six times the LM-80 test time for the LED and in-situ thermal testing of the luminaire.

NX LIGHTING CONTROLS

Control Option Ordering Logic & Description			Control Option Functionality								Control Option Components	
			Networkable	Grouping	Scheduling	Occupancy/ Motion	Daylight Harvesting	0-10V Dimming	On/Off Control	Bluetooth App Programming		
NX Wireless	NXWOM	NX Networked Wireless Enabled Integral NXSMP2-OMNI PIR Occupancy Sensor with Automatic Dimming Photocell and Bluetooth® Programming	✓	✓	✓	✓	✓	✓	✓	✓		NXSMP2-OMNI
NX Independent	NXCS	NX Connect NXC-WIZ20 Wireless Indoor Occupancy and Photocell Sensor	-	✓	-	✓	✓	✓	✓	✓ ¹		NXC-WIZ20
	BTSOI2F	Bluetooth® Programmable, BTSMP-OMNI PIR Occupancy Sensor with Automatic Dimming Photocell and 360° Lens	-	-	-	✓	✓	✓	✓	✓		BTSMP-OMNI

¹ Requires use of NX Connect App available for download from Apple app store.

DEFAULT SETTINGS

NX Wireless & Wired	Occupancy Sensor	Enabled
	Occupancy Sensor Sensitivity	7 Minutes
	Occupancy Sensor Timeout	15 Minutes
	Occupied Dim Level	100%
	Unoccupied Dim Level	0% (OFF)
	Daylight Sensor	Disabled
	Bluetooth	Enabled
	2.4GHz Wireless Mesh	Off
	Passcode Factory Passcode: HubbN3T!	Enabled

NX Independent - NX Connect (NXCS)	Settling/Dwell Time	5 sec
	Hold Time	10 min
	Group Hold Time	10 min
	Grace Time	-
	Strategy	Auto ON/OFF
	Occupancy Sensitivity	5 (highest)
	Occupancy Indicator	ON
	Partial Off/Standby	0%
	Background Level	50%
	Task Level	100%
	Daylight Harvesting	-
	Low Ambient Output	250%
	High Ambient Output	OFF

NX Independent - BTSOI2F	Occupancy Sensor	Enabled
	Occupancy Sensor Sensitivity	7
	Occupancy Sensor Timeout	8 Minutes
	Occupied Dim Level	100%
	Unoccupied Dim Level	0% (OFF)
	Daylight Sensor	Disabled

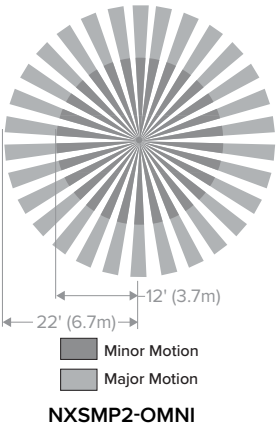
ESL

ESCALATE™ STAIRWELL LUMINAIRE

COVERAGE PATTERNS

OMNI (NXWOM) WIRELESS, PIR OCCUPANCY SENSOR,
DIMMING DAYLIGHT HARVESTING

The NX wireless option allows the fixture to communicate with other wireless equipped fixtures and with a building wide NX networked system. NXOSW allows for multiple stairwell fixtures to be linked together to accommodate different points of floor entry



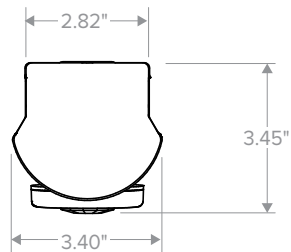
OTHER LIGHTING CONTROLS

Control Option Ordering Logic & Description			Control Option Functionality									Control Option Components	
			Default Settings	Networkable	Grouping	Scheduling	Occupancy/Motion	Daylight Harvesting	0-10V Dimming	On/Off Control	Bluetooth App Programming		
Other	HFU	High Frequency Ultrasonic Occupancy Sensor	-	-	-	-	✓	-	✓	✓	-	 FS-505C	
	LESO	Leviton Solo PIR Occupancy Sensing, Daylight Harvesting Sensor. ¹	-	-	-	-	✓	✓	✓	✓	-	 ZLS05-ILW	

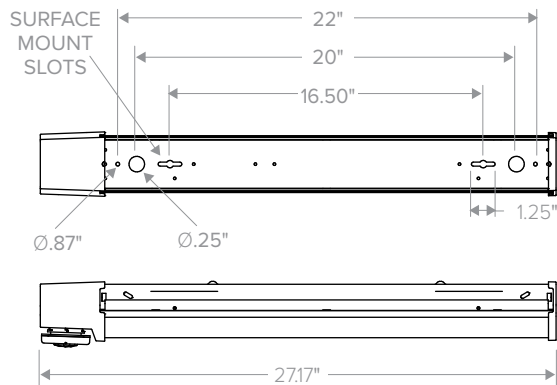
¹ Leviton Solo Sensor IR Remote available for sensor preprogramming

DIMENSIONS

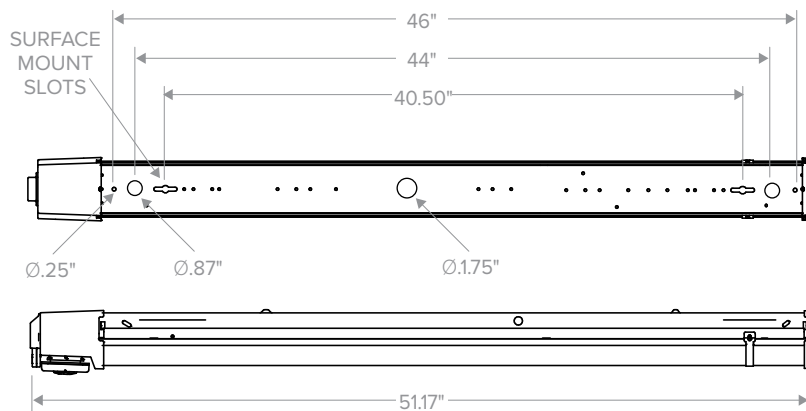
ESL END VIEW



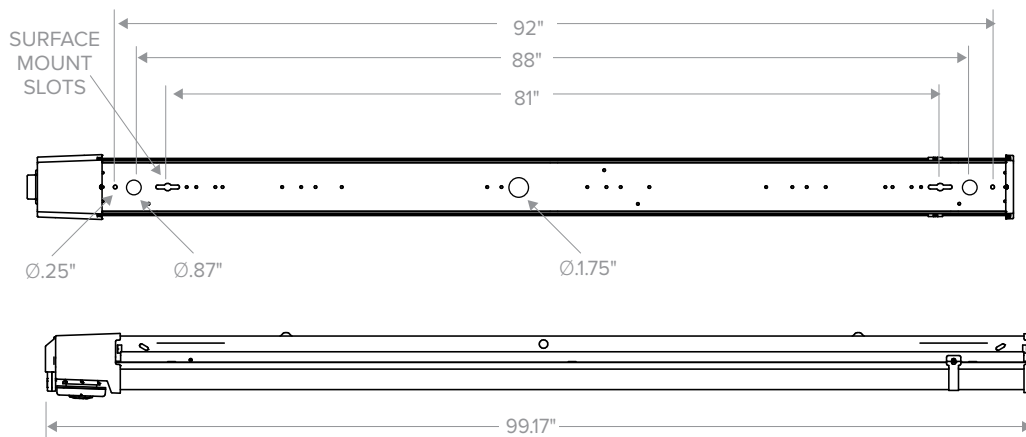
ESL 2' DIMENSIONS



ESL 4' DIMENSIONS



ESL 8' DIMENSIONS



DATE:	LOCATION:
TYPE:	PROJECT:
CATALOG #:	

PHOTOMETRY

ESL4-40ML-FAW-EDU

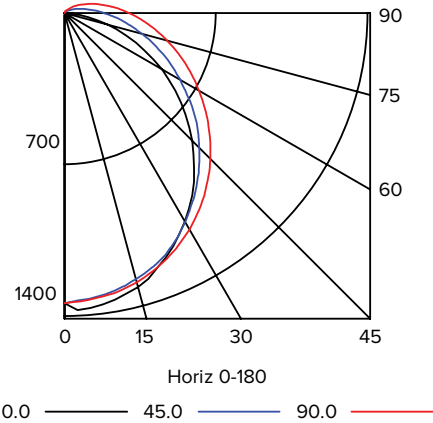
LUMINAIRE DATA

Test No.	21.00759
Description	4' Escalate Stairwell Luminaire, Frosted Acrylic Lens
Delivered Lumens	4469
Watts	31.6
Efficacy	141
Mounting	Surface
Spacing Criterion	0° = 1.23 90° = 1.28

ZONAL LUMEN SUMMARY

Zone	Lumens	% Luminaire
0-30	1036	23.2
0-40	1693	37.9
0-60	3010	67.4
0-90	4158	93.0
0-180	4469	100.0

INDOOR CANDELA PLOT



ADDITIONAL INFORMATION

DTS WIRING DIAGRAM (0-10V DIMMING DRIVER SHOWN)

