

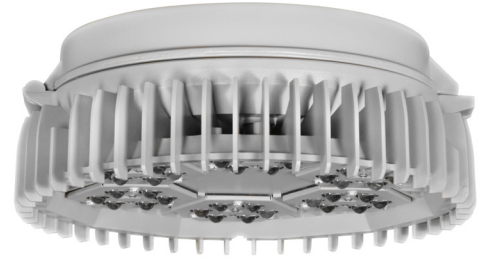
# KEMLUX III SERIES

SEVERE LOCATION

DATE:	LOCATION:
TYPE:	PROJECT:
CATALOG #:	

## FEATURES

- Custom engineered LED optics providing optimally controlled and evenly distributed light
- Three LED count options: 18, 24, 36
- Three distinct distributions: Type V Square, Type V Rectangle, Narrow
- Modular design provides 6 mounting options
- Copper-free (less than 0.4%) aluminum housing, cover and guard with corrosion resistant Lektrocote® powder polyester paint finish



## SPECIFICATIONS

### APPLICATIONS

- Designed to efficiently light corrosive and Hazardous applications such as chemical, petrochemical, marine, power generation, pharmaceutical or food processing plants

### CONSTRUCTION

- Vertically finned cast aluminum housing for maximum heat dissipation ensuring long component life and performance
- Separate hinged optical and electrical compartments for optimum component operation and easy installation, maintenance.
- One piece molded silicone gasket ensures weather proof seal around each individual LED; Stamped bezel provides mechanical compression to seal the optical assembly
- Modular design provides 6 mounting options
- Copper-free (<0.4%) aluminum housing and cover with tan Lektrocote® powder polyester paint finish provides excellent corrosion resistance from most chemicals
- Fixture weight: 29 lbs. Shipped weight: 33 lbs.

### OPTICS

- Custom engineered LED optics providing optimally controlled and evenly distributed light
- Three distinct distributions: Type V square, Type V rectangle and Narrow

### LED LIGHT ENGINE

- CCT: 5100K
- 18, 24 and 36 LEDs on up to 6 light engines providing fail-safe redundancy

### LED DRIVER

- Transient voltage protection with standard 10KVA surge suppressor
- Thermal compensation management
- Wattage: 43-86
- Minimum operating temperature of -40°C to 40°C

### LISTINGS

- CSA Listed to UL 1598 Wet Location

### WARRANTY

- 5 year warranty
- See HLI Standard Warranty for additional information

KEY DATA	
Lumen Range	4,323–9,004
Wattage Range	43-86
Efficacy Range (LPW)	99-105
Reported Life (Hours)	60,000

# KEMLUX III SERIES

SEVERE LOCATION

DATE: \_\_\_\_\_ LOCATION: \_\_\_\_\_

TYPE: \_\_\_\_\_ PROJECT: \_\_\_\_\_

CATALOG #: \_\_\_\_\_

## ORDERING GUIDE

**Example:** KSL-36L-U-5K-N-C-2-GR-WIH

CATALOG #

KSL		Voltage		5K		Optics		Mount		Hub		
Series	Number of LEDs			Color Temperature								
KSL Kemlux III LED	<b>18L</b>	18 High Performance LEDs (43 watts)	<b>U</b>	120-277	<b>5K</b>	5000K	<b>5M</b>	Type V Square	<b>A</b>	Pendant	<b>2</b>	¾" <sup>1</sup>
	<b>24L</b>	24 High Performance LEDs (57 watts)	<b>1</b>	120			<b>5R</b>	Type V Rectangle	<b>B</b>	Wall Bracket	<b>3</b>	1" <sup>1</sup>
	<b>36L</b>	36 High Performance LEDs (86 watts)	<b>2</b>	208			<b>N</b>	Narrow	<b>C</b>	Cone	<b>4</b>	1¼" <sup>2</sup>
			<b>3</b>	240					<b>D</b>	Stanchion 25°	<b>5</b>	1½" <sup>2</sup>
		<b>4</b>	277					<b>N</b>	None (mount ordered separately)			
		<b>5</b>	480					<b>S</b>	Straight Stanchion			
		<b>F</b>	347					<b>X</b>	Ceiling Mount			
								<b>Y</b>	Yoke Mount			

Color	Options
<b>WH</b> White	<b>WIH</b> Wireless Control System
<b>GR</b> Gray	<b>SC70</b> 70% Output dimmed/ 30% Energy savings
	<b>SC50</b> 50% Output dimmed/ 50% Energy savings
	<b>SC30</b> 30% Output dimmed/ 70% Energy savings
	<b>SC0</b> No light output when dimmed/ ON/OFF Control
	<b>F(x)</b> Fusing <sup>3</sup>
	<b>P1</b> Photo cell factory 120V <sup>4</sup>
	<b>P2</b> Photo cell factory 208-277V <sup>4</sup>
	<b>P3</b> Photo cell factory 347V <sup>4</sup>

### Accessories (Order Separately)

**WG** Wire Guard

### Notes:

- Available with A, B, C, X Mount
- Available with S, D Mount
- Fusing — replace (x) with digit code for voltage: 1-120V, 2-208V, 3-240V, 4-277V, 6-347V
- Available only with A, B, D and S mounting options

## LED SYSTEM INFORMATION

NUMBER OF LED's	DRIVE CURRENT (MILLIAMPS)	INPUT WATTS	DISTRIBUTION	TOTAL LUMENS	LUMENS PER WATT	HID EQUIVALENT
18	STD. (700 MA)	43	N	4410	103	100W HID
			5M	4323	101	
			5R	4405	102	
24		57	N	5988	105	175W HID
			5M	5712	100	
			5R	5896	103	
36		86	N	9004	105	250W HID
			5M	8473	99	
			5R	8747	102	

<sup>1</sup>Lumen values are from photometric tests performed in accordance with IESNA LM-79-08. Data is considered to be representative of the configurations shown. Actual performance may differ as a result of end-user environment and application.

# KEMLUX III SERIES

SEVERE LOCATION

DATE: \_\_\_\_\_ LOCATION: \_\_\_\_\_

TYPE: \_\_\_\_\_ PROJECT: \_\_\_\_\_

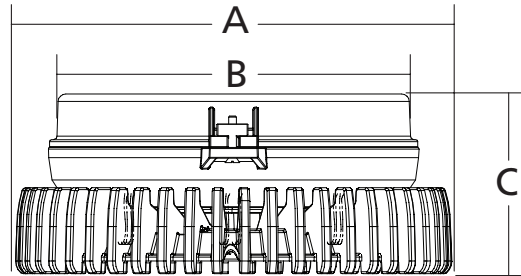
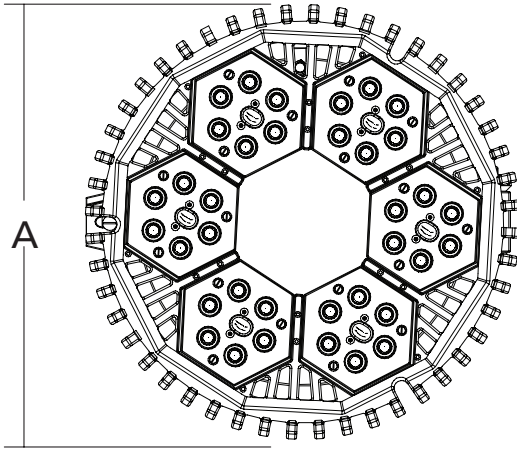
CATALOG #: \_\_\_\_\_

## ELECTRICAL DATA

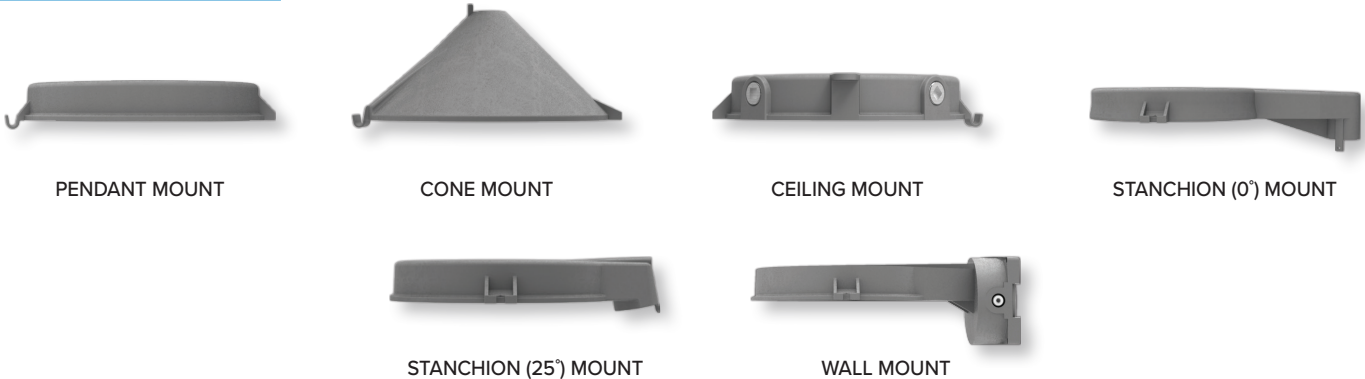
NUMBER OF LED's	NUMBER OF DRIVERS	DRIVE CURRENT (MILLIAMPS)	INPUT VOLTAGE (V)	SYSTEM POWER (W)	CURRENT (AMPS)
18	1	STD. (700 MA)	120	43	0.36
			277	45	0.20
			347	43	0.13
			480	43	0.11
24	2		120	57	0.48
			277	59	0.24
			347	56	0.17
			480	57	0.13
36	3		120	86	0.73
			277	89	0.35
			347	84	0.25
			480	85	0.20

## DIMENSIONS

	KS
A	14.5"
B	11"
C	6"



## MOUNTING OPTIONS



# KEMLUX III SERIES

SEVERE LOCATION

DATE: \_\_\_\_\_ LOCATION: \_\_\_\_\_

TYPE: \_\_\_\_\_ PROJECT: \_\_\_\_\_

CATALOG #: \_\_\_\_\_

## PHOTOMETRY

### KXL-36L-X-5K-5M

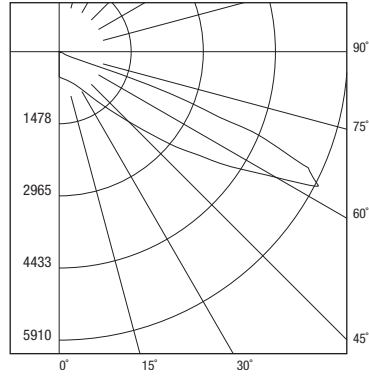
#### LUMINAIRE DATA

Test No.	7093
Description	5000K, 68 CRI
Delivered Lumens	8470
Watts	85.3W
Efficacy	100.0
Mounting	Pendant
Spacing Criterion	3.75

#### ZONAL LUMEN SUMMARY

ZONE	LUMENS
0-30	557.83
0-40	1309.22
0-60	5689.70
0-90	8461.34

#### POLAR GRAPH



#### CANDELA DISTRIBUTION

ANGLE IN DEGREES	AVERAGE 0-DEG	AVERAGE 45-DEG	AVERAGE 90-DEG
45	36714	38224	36501
55	64143	91715	63284
65	47593	182242	47788
75	2539	17775	2645
85	1257	1571	1414

### KXL-36L-X-5K-5R

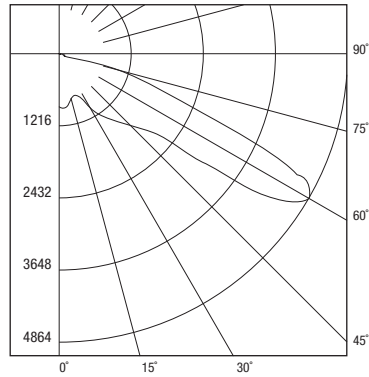
#### LUMINAIRE DATA

Test No.	7096
Description	5000K, 68 CRI
Delivered Lumens	8746
Watts	85.3W
Efficacy	100.0
Mounting	Pendant
Spacing Criterion	0°=3.89 90°=2.37

#### ZONAL LUMEN SUMMARY

Zone	Lumens	% Luminaire
0-40	11,062	68.6
0-60	15,985	99.1
0-90	16,132	100.0
0-180	16,132	100.0

#### POLAR GRAPH



#### LUMINANCE DATA (CD/SQ.M)

ANGLE IN DEGREES	AVERAGE 0-DEG	AVERAGE 45-DEG	AVERAGE 90-DEG
45	33189	34371	30033
55	97444	53401	47123
65	128719	104809	8197
75	41158	28409	1852
85	8798	2985	1414

### KXL-36L-X-5K-N

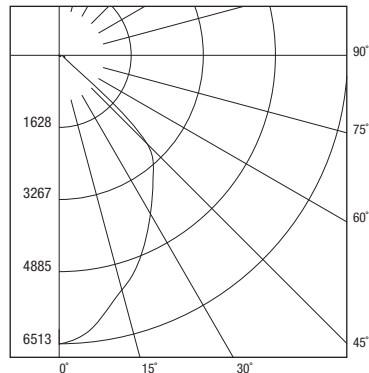
#### LUMINAIRE DATA

Test No.	7099
Description	5000K, 68 CRI
Delivered Lumens	9019
Watts	85.4W
Efficacy	100.0
Mounting	Pendant
Spacing Criterion	.98

#### ZONAL LUMEN SUMMARY

Zone	Lumens	% Luminaire
0-40	11,062	68.6
0-60	15,985	99.1
0-90	16,132	100.0
0-180	16,132	100.0

#### POLAR GRAPH



#### LUMINANCE DATA (CD/SQ.M)

ANGLE IN DEGREES	AVERAGE 0-DEG	AVERAGE 45-DEG	AVERAGE 90-DEG
45	55516	55516	55516
55	3485	3485	3485
65	1620	1620	1620
75	1799	1799	1799
85	1728	1728	1728