

# LCS

2', 4', 8' OPEN STRIPLIGHT

## FEATURES

- LED Open Striplight
- Long life 60,000 hour LEDs at L80 for reduced maintenance
- Four LED color choices and 80+ CRI
- Choice of four lumen packages per size
- Available in 2', 4', or 8' lengths
- Optional integral emergency battery pack

DATE:	LOCATION:
TYPE:	PROJECT:
CATALOG #:	



## SPECIFICATIONS

### CONSTRUCTION

- Housing, wireway, and ends are formed from code-gauge steel
- Housing components act as heat sink for LED heat dissipation
- Knockouts are provided for electrical access and mounting

### OPTICS

- For narrow lens LED striplight use LCL
- For industrial narrow distribution LED use LCR

### INSTALLATION

- LED boards and driver accessible for future maintenance or upgrades
- Modular replaceable LED components
- Surface mount or suspended

### FINISH

- White painted parts are treated with a five-stage phosphate bonding process and finished with high reflectance baked enamel
- For a post-painted housing finish, select PAF option

### ELECTRICAL

- Long-life LEDs are rated for 50,000 hours at L80 lumen maintenance
- Driver options include fixed output for on/off function, step dimming (high/low/off) or continuous 0-10V dimming
- LED boards and driver accessible for future maintenance or upgrades
- Maximum temperature 25°C on all lumen packages up to HL

### CERTIFICATION

- All luminaires are built to UL 1598 and 2108 standards, and bear appropriate CSA c/US labels
- Damp location labeling is standard. CSA certified to UL 924 standards with battery pack option
- Adheres to LM70, LM80, and TM21 industry standards

### WARRANTY

- Five year warranty (Terms and Conditions apply)

**ORDERING GUIDE**

**Example:** LCS4-40HL-EU

LCS		Color Temp		Delivered Lumens		Driver		Voltage		Options	
Model	Size										
LCS LED Striplight	2' 2'	30	3000K	LW	Low Watt	E	Fixed Output	U	120V-277V	ELL14	Emergency Battery Pack, 1400 Lumens <sup>1,2</sup>
	4' 4'	35	3500K	ML	Medium Lumen	ESD	Step Dimming <sup>3</sup>	347	347V (E, ED, ED! only)	GLR	Fast Blow Fuse
	8' 8'	40	4000K	HL	High Lumen	ED	0-10V Dimming	480	480V <sup>4</sup>	PAF	Paint After Fabrication
		50	5000K	VL	Very High Lumen	ED1	0-10V 1% Dimming				
					See Product Delivered Lumens Below	LUTH	Hi-lume 1% EcoSystem LED driver with Soft-on, Fade-to-Black dimming technology				

**Accessories (Order Separately)**

- CSWG4** 4' Wire Guard, 2 Required for 8' Fixture
- S18** 18' Stem, Canopy
- SS18** 18' Swivel Stem-45° Swivel
- CSHC** Chain Hanger Assembly

- Notes:
- 1 Not available in 2' size
  - 2 For compatibility with Dual-Lite LiteGear® inverters in lieu of installed battery pack, contact Current Representative
  - 3 Only available in 4' ML, HL & VL packages
  - 4 Consult factory for LW lumen package

**DELIVERED LUMENS**

Lumen Package	Lumens	Watts	LPW
LCS2-30ML-EU	2896	23	124
LCS2-35ML-EU	2955	23	127
LCS2-40ML-EU	3041	23	131
LCS2-50ML-EU	3122	23	134
LCS4-30LW-EU	2662	19	142
LCS4-35LW-EU	2753	19	146
LCS4-40LW-EU	2795	19	149
LCS4-50LW-EU	2870	19	153
LCS4-30ML-EU	5392	42	130
LCS4-35ML-EU	5575	42	134
LCS4-40ML-EU	5661	42	136
LCS4-50ML-EU	5812	42	140
LCS4-30HL-EU	6572	52	126
LCS4-35HL-EU	6795	52	130
LCS4-40HL-EU	6900	52	132
LCS4-50HL-EU	7084	52	135
LCS4-30VL-EU	10795	88	123
LCS4-35VL-EU	11162	88	127

Lumen Package	Lumens	Watts	LPW
LCS4-40VL-EU	11334	88	129
LCS4-50VL-EU	11637	88	132
LCS8-30LW-EU	5324	38	142
LCS8-35LW-EU	5506	38	146
LCS8-40LW-EU	5590	38	149
LCS8-50LW-EU	5740	38	153
LCS8-30ML-EU	10784	83	130
LCS8-35ML-EU	11150	83	134
LCS8-40ML-EU	11322	83	136
LCS8-50ML-EU	11624	83	140
LCS8-30HL-EU	13144	105	126
LCS8-35HL-EU	13590	105	130
LCS8-40HL-EU	13800	105	132
LCS8-50HL-EU	14168	105	135
LCS8-30VL-EU	21590	176	123
LCS8-35VL-EU	22324	176	127
LCS8-40VL-EU	22668	176	129
LCS8-50VL-EU	23274	176	132

**PHOTOMETRY**

**LCS2-40ML-EU**

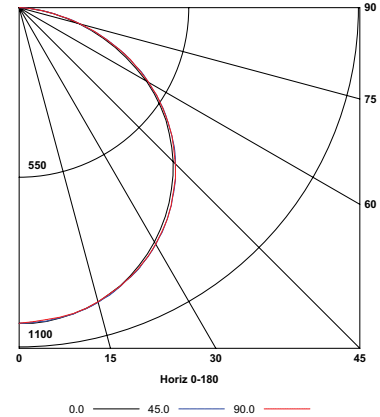
**LUMINAIRE DATA**

Test No.	17800
Description	LCS LED Straight Sided Utility Channel, Striplight 24" x 47/16" LED striplight with white reflector
Ballast	XI040C110V054BST1
Ballast Factor	1.00
Lamp	LED
Fixture Lumens	3041
Watts	23.30
Shielding Angle	0° = 90 90° = 90
Spacing Criterion	0° = 1.27 90° = 1.28
Luminous Opening in Feet	Length: 2.00 Width: 0.38 Height: 0.00

**ZONAL LUMEN SUMMARY**

Zone	Lumens	% Luminaire
0-30	803	26.4
0-40	1326	43.6
0-60	2384	78.4
0-90	3041	100
0-180	3041	100

**POLAR GRAPH**



**LCS4-40ML-EU**

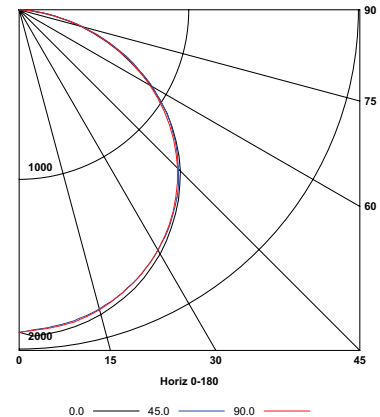
**LUMINAIRE DATA**

Test No.	17806
Description	LCS LED Straight Sided Utility Channel, Striplight 48" x 47/16" LED striplight with white reflector
Ballast	XI040C110V054BST1
Ballast Factor	1.00
Lamp	LED
Fixture Lumens	5662
Watts	41.50
Shielding Angle	0° = 90 90° = 90
Spacing Criterion	0° = 1.29 90° = 1.27
Luminous Opening in Feet	Length: 4.00 Width: 0.38 Height: 0.00

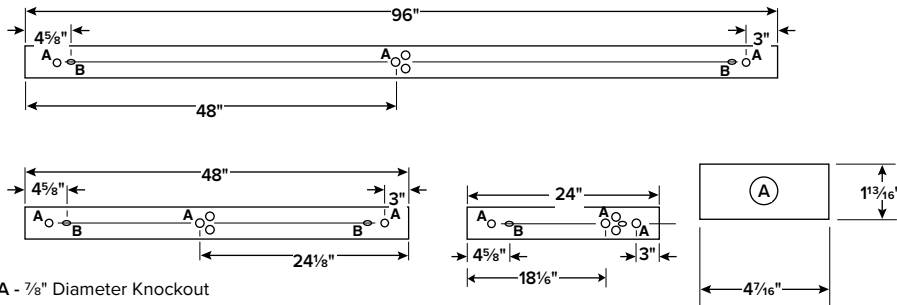
**ZONAL LUMEN SUMMARY**

Zone	Lumens	% Luminaire
0-30	1492	26.4
0-40	2464	43.5
0-60	4435	78.3
0-90	5662	100
0-180	5662	100

**POLAR GRAPH**



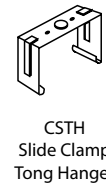
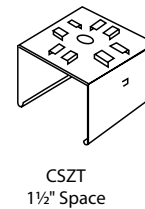
**DIMENSIONS**



A - 7/8" Diameter Knockout

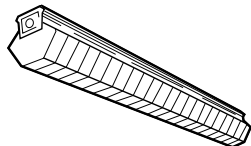
B - 5/16" x 1/2" hole

Note 1: All Non-Shielded (strip) fixtures- Deduct 1/16" from overall dimension for continuous row mounting.  
Dimensions shown include end panel.



NOTE: All dimensions are in inches; dimensions and specifications are subject to change without notice. Please consult factory or check sample for verification.

**ACCESSORIES**



CSWG4 Wire Guards