

# LJT22

2' x 2' LED TROFFER

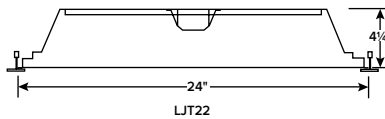
|            |           |
|------------|-----------|
| DATE:      | LOCATION: |
| TYPE:      | PROJECT:  |
| CATALOG #: |           |

## FEATURES

- Full distribution LED troffer
- Direct replacement of fluorescent 2x2
- Wet location option available
- Long-life, 60,000 hour LEDs at L80 reduce life cycle maintenance costs
- Four LED color choices and 80 CRI
- Many shielding choices
- Two door frame choices
- Metal to metal light leak protection on all four sides of shielding frame
- Fixed output, step dimming (high/low/off), 0-10V dimming, 0-10V dimming-dim to off drivers available
- Hinged optical system allows easy access to LED modules and electrical from below the ceiling
- UL Sanitation certified per NSF standards
- All models standard with IC rating



## SERVICE PROGRAMS



| Typical Dimensions and Weights |                        |                       |                        |                 |
|--------------------------------|------------------------|-----------------------|------------------------|-----------------|
| Sizes                          | (A) Length Inches (mm) | (B) Width Inches (mm) | (C) Height Inches (mm) | Weight lbs (kg) |
| 2x2                            | 24 (610)               | 24 (610)              | 4.5 (114)              | 10 (4.5)        |

## SPECIFICATIONS

### CONSTRUCTION

- Luminaire housing, end caps, and reflectors are die-formed code-gauge cold-rolled steel
- Optical system hinges from either side for easy access to LED module and electrical components
- Mechanical light trap prevents light leaks

### FINISH

- All metal parts processed with a multi-stage phosphate bonding treatment and finished with a high reflectance baked white enamel

### SHIELDING

- Lens is high transmission pattern #12 acrylic (A12) for light diffusion without compromise to light output
- Other shielding may be specified
- If desired shielding media is not shown in ordering guide, contact your local representative

### INSTALLATION

- An access plate is furnished with each recessed fixture for fast wiring connections without the necessity to open the fixture or wireway

### CEILING COMPATIBILITY

- Designed for recessed installation in standard inverted tee grid ceilings (G)
- Also available for recessed installation in hard ceilings (G with FK accessory), surface mount at ceiling plane (SM), or cable mount suspension below ceiling plane (CM)
- For compatibility with specific ceilings contact your representative

### CERTIFICATIONS

- All luminaires are built to UL 1598 standards, and bear appropriate CSA labels
- UL Sanitation Certified per NSF Standards
- Damp location labeling standard, wet location labeling is optional
- CSA certified to UL 924 standards with battery pack or DTS (Dimming Bypass Module) options
- Adheres to LM79, LM80 and TM21 industry standards
- IC rating is standard on all models
- DLC® (DesignLights Consortium) Qualified, with some Premium Qualified configurations. Please refer to the DLC website for specific product qualifications at [www.designlights.org](http://www.designlights.org)

- The DTS, Dimming Bypass Module, is for emergency circuit control loads including sensors and wireless systems CSA certified to UL 924. See wiring diagram.
- Product configurations not including battery packs or controls meet federal procurement law requirements under the Trade Agreements Act (FAR 52.225-11) [See Buy America\(n\) Solutions](#)

### WARRANTY

- 5 year warranty

### CERTIFICATIONS (CONTINUED)

# LJT22

2' x 2' LED TROFFER

DATE: \_\_\_\_\_ LOCATION: \_\_\_\_\_

TYPE: \_\_\_\_\_ PROJECT: \_\_\_\_\_

CATALOG #: \_\_\_\_\_

Gray Shading = Service Program  
Limit of 250 Luminaries **QS10**

## ORDERING GUIDE

Example: LJT22-35MLG-FSA12-EU

| LJT                          | 22       |                                      |       |              |                  |              |                   |      |                      |           |   |
|------------------------------|----------|--------------------------------------|-------|--------------|------------------|--------------|-------------------|------|----------------------|-----------|---|
| Model                        | Size     | Color Temp                           |       | Lumen Output |                  | Ceiling Type |                   | Door |                      | Shielding |   |
| LJT<br>LED Lensed<br>Troffer | 22 2'x2' | 30                                   | 3000K | VW           | Very Low Watt    | G            | Grid <sup>1</sup> | FS   | White Flush Steel    | A12       | Pattern 12 Acrylic Lens                         |
|                              |          | 35                                   | 3500K | MW           | Medium Low Watt  | SM           | Surface Mount     | FA   | White Flush Aluminum | A12125    | Pattern 12 Acrylic Lens, 0.125" Nominal         |
|                              |          | 40                                   | 4000K | LW           | Low Watt         | CM           | Cable Mount       | RA   | Regressed Aluminum   | A12F      | Pattern 12 Frosted Acrylic Lens                 |
|                              |          | 50                                   | 5000K | ML           | Medium Lumen     |              |                   |      |                      | A12125F   | Pattern 12 Frosted Acrylic Lens, 0.125" Nominal |
|                              |          |                                      |       | HL           | High Lumen       |              |                   |      |                      | A19       | Pattern 19 Acrylic Lens, 0.156" Nominal         |
|                              |          |                                      |       | VL           | Very High Lumen  |              |                   |      |                      | A19F      | Pattern 19 Frosted Acrylic Lens 0.156"          |
|                              |          |                                      |       | XL           | Extra High Lumen |              |                   |      |                      | CP        | Clear Polycarbonate                             |
|                              |          |                                      |       | UL           | Ultra High Lumen |              |                   |      |                      | SFA       | Smooth Frosted Acrylic                          |
|                              |          | See Product Availability Table Below |       |              |                  |              |                   |      |                      |           |   |

| Driver |   | Voltage |          | Options |  |
|--------|---|---------|----------|---------|--|
| E      | Fixed Output  | U       | 120-277V | ELL14   | Emergency Battery Pack (CEC Title 20 compliant) Installed <sup>3,4,5,6,7</sup>               |
| ED     | 0-10V Dimming   | 347     | 347V     | C388    | 3-wire Flex  |
| ED1    | 0-10V 1% Dimming  |         |          | C488    | 4-wire Flex  |
| EDD    | 0-10V Dimming, Dim to Off   |         |          | C588    | 5-wire Flex  |
| ESD    | Step Dimming <sup>2,3</sup>   |         |          | C688    | 6-wire Flex  |
| LUTH   | Hi-lume 1% EcoSystem LED driver with Soft-on, Fade-to-Black dimming technology <sup>2,3</sup> |         |          | TB4     | T-Bar Clips  |
|        |   |         |          | GLR     | Fast Blow Fuse   |
|        |   |         |          | GTD     | Generator Transfer Device <sup>8</sup>   |
|        |   |         |          | DTS     | Dimming Bypass Module <sup>3,5,9</sup>   |
|        |   |         |          | G1      | Single Gasketing (Door to Housing)   |
|        |   |         |          | G2      | Double Gasketing (G1 and Lens to Door)   |
|        |   |         |          | G3      | Triple Gasketing (G2 and Housing to Ceiling)   |
|        |   |         |          | WL      | Wet Location (Select G2 or G3 Gasketing) <sup>10</sup>                                       |
|        |   |         |          | EOR     | End of Row (SM and CM only. Provides end wiring access for continuous row mounting.)         |
|        |   |         |          | INT     | Intermediate (SM and CM only. Provides ends with wiring access for continuous row mounting.) |
|        |   |         |          | CP      | Chicago Plenum   |
|        |   |         |          | PAF     | Paint After Fabrication  |

## ACCESSORY ORDERING GUIDE

| Accessories                            |   |
|--|---|
| <input type="checkbox"/> FK22          | 2' x 2' Single Flange Kit (Shipped separately)            |
| <input type="checkbox"/> CM48YSC3F-KIT | 48" Cable Mount Kit for CM ceiling type, 3 Wire Feed Cord |

- Notes:
- For drywall, order G with flange kit accessory
  - Not available in all lumen packages, refer to Driver Availability table.
  - Not available in 347V
  - To determine lumen output in emergency mode, multiply the battery pack wattage by the fixture lumens per watt (LPW)
  - For compatibility with Dual-Lite Litegear inverters, contact lighting representative
  - Not available with Surface or Cable Mount
  - UL lumen package not available with thru-wire when ELL14 is ordered.
  - Only available with E, Fixed Output driver option
  - For emergency circuit control loads including sensors and wireless systems CSA certified to UL 924. See wiring diagram.
  - Only available with FA door and Grid ceiling mount.

# LJT22

2' x 2' LED TROFFER

DATE: \_\_\_\_\_ LOCATION: \_\_\_\_\_

TYPE: \_\_\_\_\_ PROJECT: \_\_\_\_\_

CATALOG #: \_\_\_\_\_

## PRODUCT EXCEPTIONS & DETAILS

Driver options listed below are available for the outputs as shown.

| DRIVER AVAILABILITY TABLE |    |    |    |    |    |    |    |    |
|---------------------------|----|----|----|----|----|----|----|----|
|                           | VW | MW | LW | ML | HL | VL | XL | UL |
| E                         | x  | x  | x  | x  | x  | x  | x  | x  |
| ED                        | x  | x  | x  | x  | x  | x  | x  | x  |
| ED1                       | x  | x  | x  | x  | x  | x  | x  | x  |
| EDD                       | x  | x  | x  | x  | x  | x  | x  | x  |
| ESD                       |    | x  | x  | x  | x  | x  | x  | x  |
| LUTH                      | x  | x  | x  | x  | x  |    |    |    |

## DELIVERED LUMENS

| Product Availability |        |             |     |
|----------------------|--------|-------------|-----|
| Lumen Package        | Lumens | Input Watts | LPW |
| LJT22-50VWG-FSA12-EU | 1572   | 13          | 120 |
| LJT22-40VWG-FSA12-EU | 1443   | 13          | 110 |
| LJT22-35VWG-FSA12-EU | 1421   | 13          | 108 |
| LJT22-30VWG-FSA12-EU | 1380   | 13          | 105 |
| LJT22-50MWG-FSA12-EU | 2130   | 18          | 117 |
| LJT22-40MWG-FSA12-EU | 1956   | 18          | 107 |
| LJT22-35MWG-FSA12-EU | 1926   | 18          | 106 |
| LJT22-30MWG-FSA12-EU | 1870   | 18          | 103 |
| LJT22-50LWG-FSA12-EU | 2741   | 24          | 116 |
| LJT22-40LWG-FSA12-EU | 2517   | 24          | 106 |
| LJT22-35LWG-FSA12-EU | 2479   | 24          | 105 |
| LJT22-30LWG-FSA12-EU | 2407   | 24          | 102 |
| LJT22-50MLG-FSA12-EU | 3722   | 31          | 119 |
| LJT22-40MLG-FSA12-EU | 3419   | 31          | 109 |
| LJT22-35MLG-FSA12-EU | 3365   | 31          | 108 |
| LJT22-30MLG-FSA12-EU | 3267   | 31          | 104 |
| LJT22-50HLG-FSA12-EU | 4074   | 33          | 125 |
| LJT22-40HLG-FSA12-EU | 3743   | 33          | 114 |
| LJT22-35HLG-FSA12-EU | 3684   | 33          | 113 |
| LJT22-30HLG-FSA12-EU | 3577   | 33          | 109 |
| LJT22-50VLG-FSA12-EU | 4718   | 42          | 113 |
| LJT22-40VLG-FSA12-EU | 4334   | 42          | 104 |
| LJT22-35VLG-FSA12-EU | 4265   | 42          | 103 |
| LJT22-30VLG-FSA12-EU | 4142   | 42          | 100 |
| LJT22-30XLG-FSA12-EU | 4684   | 40          | 119 |
| LJT22-35XLG-FSA12-EU | 4824   | 40          | 122 |
| LJT22-40XLG-FSA12-EU | 4899   | 40          | 124 |
| LJT22-50XLG-FSA12-EU | 5334   | 40          | 135 |
| LJT22-30ULG-FSA12-EU | 6212   | 53          | 117 |
| LJT22-35ULG-FSA12-EU | 6398   | 53          | 121 |
| LJT22-40ULG-FSA12-EU | 6497   | 53          | 123 |
| LJT22-50ULG-FSA12-EU | 7075   | 53          | 133 |

# LJT22

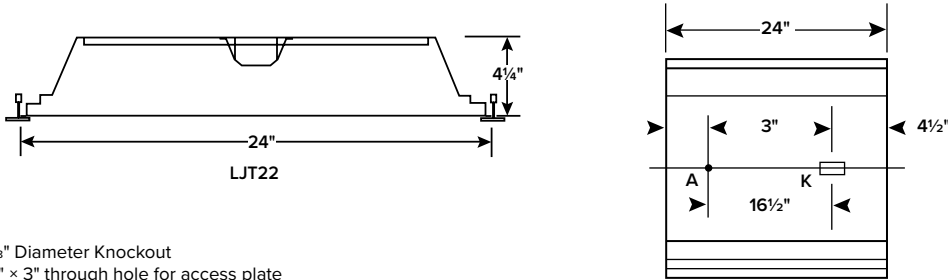
2' x 2' LED TROFFER

DATE: \_\_\_\_\_ LOCATION: \_\_\_\_\_

TYPE: \_\_\_\_\_ PROJECT: \_\_\_\_\_

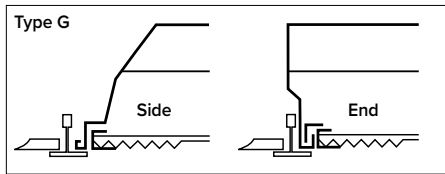
CATALOG #: \_\_\_\_\_

## DIMENSIONS

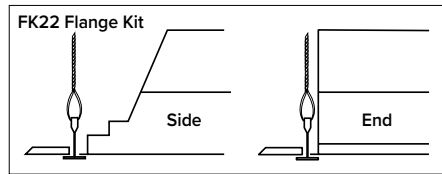


A - 7/8" Diameter Knockout  
K - 2" x 3" through hole for access plate

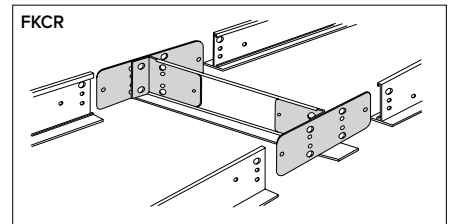
## CEILING COMPATIBILITY



For lay-in installation in exposed grid ceilings. Maximum tee widths of 1" and maximum tee heights of 2" allowed.



For hard ceiling applications order FK22 flange kit. Flange kit wires directly into concealed ceiling opening for a clean, finished appearance.

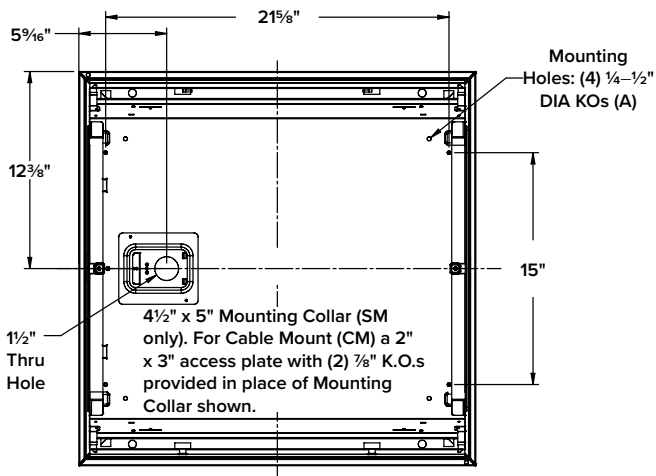


For flanged fixtures in row configurations, the FKCR adapter bracket kit is required in addition to the FK22 kit. Order one less FKCR than the total number of fixtures in row. (Example: Row of two, order (2) FK22 & (1) FKCR)

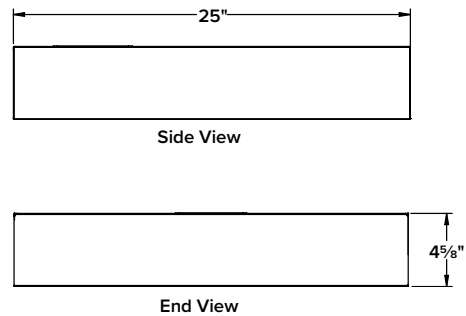
Row cut out dimensions using FK22 & FKCR adapters:  
Width 24 3/8", Length [24" x (# in row)] + 3/4". Example: (24" x 2) + 3/8" = 48 3/8"

Flange kit rough in dimensions for single unit only: 24 3/8" x 24 3/8"

## SURFACE MOUNT OR CABLE MOUNT



**NOTE:** All dimensions are in inches; dimensions and specifications are subject to change without notice. Please consult factory or check sample for verification.



### SURFACE MOUNT

Order SM ceiling type. Mounting collar required for surface mounting. (4) Mounting knock-outs, 1/4" to 1/2" provided as shown, marked "A".

### CABLE MOUNT

Order CM ceiling type. Access plate supplied for cable mounting or suspension. Use CM48Y2C3F-KIT 48" cable mount kit. Includes 3 wire feed cord. For other wiring needs, contact representative. Mounting knock-outs, 1/4" to 1/2", provided as shown, marked "A".

**LJT22**

2' x 2' LED TROFFER

DATE: \_\_\_\_\_ LOCATION: \_\_\_\_\_

TYPE: \_\_\_\_\_ PROJECT: \_\_\_\_\_

CATALOG #: \_\_\_\_\_

**PHOTOMETRY**

Test 16378 Test Date 06/30/2016

**LUMINAIRE DATA**

|                          |  |
|--------------------------|--|
| Luminaire                | LJT22-40LWG-FSA12-EU<br>LJT LED, Lensed Troffer<br>2' X 2' LED with A12 pattern<br>acrylic prisms lens |
| Ballast                  | XI040C110V054BST1  |
| Ballast Factor           | 1.00   |
| Lamp                     | LED  |
| Fixture Lumens           | 2518   |
| Watts                    | 23.70  |
| Mounting                 | Recessed   |
| Shielding Angle          | 0° = 90 90° = 90   |
| Spacing Criterion        | 0° = 1.14 90° = 1.20   |
| Luminous Opening in feet | Length: 1.92<br>Width: 1.92<br>Height: 0.00  |

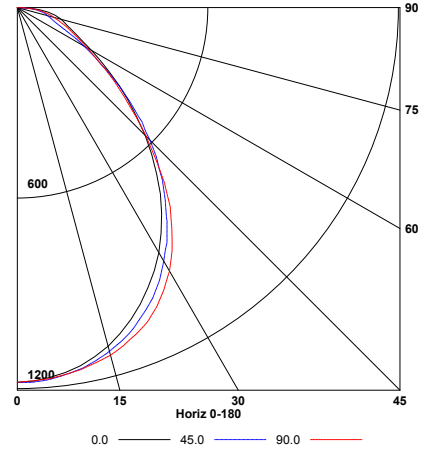
**ENERGY DATA**

|   |  |
|---|--|
| Total Luminaire Efficiency                              | 100.0%                                       |
| Total Lumens per Watt                                   | 106  |
| ANSI/IESNA RP-1-2004 Compliance                         | Noncompliant                                 |
| Comparative Yearly Lighting Energy Cost per 1000 Lumens | \$2.29 based on 3000 hrs. and \$0.08 per KWH |

**ZONAL LUMEN SUMMARY**

| Zone  | Lumens | %Lamp | %Fixt. |
|-------|--------|-------|--------|
| 0-30  | 889    | 35.3  | 35.3   |
| 0-40  | 1401   | 55.6  | 55.6   |
| 0-60  | 2157   | 85.7  | 85.7   |
| 0-90  | 2518   | 100.0 | 100.0  |
| 0-180 | 2518   | 100.0 | 100.0  |

**INDOOR CANDELA PLOT**



Test 16381 Test Date 07/13/2016

**LUMINAIRE DATA**

|                          |  |
|--------------------------|--|
| Luminaire                | LJT22-40MLG-FSA12-EU<br>LJT LED, Lensed Troffer<br>2' X 2' LED with A12 pattern<br>acrylic prisms lens |
| Ballast                  | XI040C110V054BST1  |
| Ballast Factor           | 1.00   |
| Lamp                     | LED  |
| Fixture Lumens           | 3419   |
| Watts                    | 31.30  |
| Mounting                 | Recessed   |
| Shielding Angle          | 0° = 90 90° = 90   |
| Spacing Criterion        | 0° = 1.14 90° = 1.20   |
| Luminous Opening in feet | Length: 1.92<br>Width: 1.92<br>Height: 0.00  |

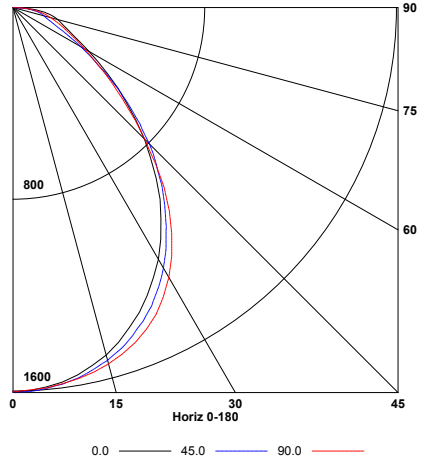
**ENERGY DATA**

|   |  |
|---|--|
| Total Luminaire Efficiency                              | 100.0%                                       |
| Total Lumens per Watt                                   | 109  |
| ANSI/IESNA RP-1-2004 Compliance                         | Noncompliant                                 |
| Comparative Yearly Lighting Energy Cost per 1000 Lumens | \$2.18 based on 3000 hrs. and \$0.08 per KWH |

**ZONAL LUMEN SUMMARY**

| Zone  | Lumens | %Lamp | %Fixt. |
|-------|--------|-------|--------|
| 0-30  | 1209   | 35.3  | 35.3   |
| 0-40  | 1903   | 55.7  | 55.7   |
| 0-60  | 2930   | 85.7  | 85.7   |
| 0-90  | 3419   | 100.0 | 100.0  |
| 0-180 | 3419   | 100.0 | 100.0  |

**INDOOR CANDELA PLOT**



Test 16384 Test Date 07/13/2016

**LUMINAIRE DATA**

|                          |  |
|--------------------------|--|
| Luminaire                | LJT22-40HLG-FSA12-EU<br>LJT LED, Lensed Troffer<br>2' X 2' LED with A12 pattern<br>acrylic prisms lens |
| Ballast                  | XI040C110V054BST1  |
| Ballast Factor           | 1.00   |
| Lamp                     | LED  |
| Fixture Lumens           | 3743   |
| Watts                    | 32.70  |
| Mounting                 | Recessed   |
| Shielding Angle          | 0° = 90 90° = 90   |
| Spacing Criterion        | 0° = 1.14 90° = 1.20   |
| Luminous Opening in feet | Length: 1.92<br>Width: 1.92<br>Height: 0.00  |

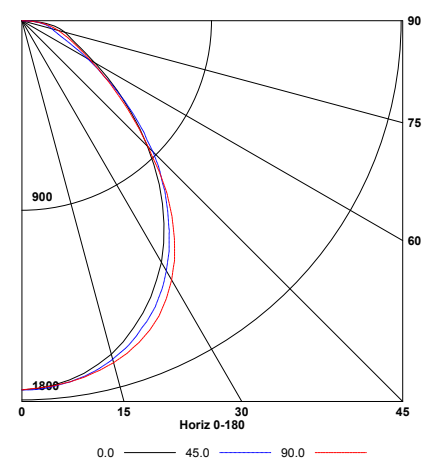
**ENERGY DATA**

|   |  |
|---|--|
| Total Luminaire Efficiency                              | 100.0%                                       |
| Total Lumens per Watt                                   | 114  |
| ANSI/IESNA RP-1-2004 Compliance                         | Noncompliant                                 |
| Comparative Yearly Lighting Energy Cost per 1000 Lumens | \$2.12 based on 3000 hrs. and \$0.08 per KWH |

**ZONAL LUMEN SUMMARY**

| Zone  | Lumens | %Lamp | %Fixt. |
|-------|--------|-------|--------|
| 0-30  | 1321   | 35.3  | 35.3   |
| 0-40  | 2081   | 55.6  | 55.6   |
| 0-60  | 3206   | 85.7  | 85.7   |
| 0-90  | 3743   | 100.0 | 100.0  |
| 0-180 | 3743   | 100.0 | 100.0  |

**INDOOR CANDELA PLOT**



**DTS WIRING DIAGRAM (0-10V DIMMING DRIVER SHOWN)**

