

# immersion

## LED Tubes

Refrigerated Display Lighting

Project Name \_\_\_\_\_

Date \_\_\_\_\_ Type \_\_\_\_\_

Notes \_\_\_\_\_



## UL Type A & Type C LED Tubes for Refrigeration Display Lighting



# Immersion™ LED Tubes

## Refrigerated Display Lighting

Project Name \_\_\_\_\_

Date \_\_\_\_\_ Type \_\_\_\_\_

Notes \_\_\_\_\_



**Immersion™ LED Tubes** are designed specifically for use in commercial refrigeration applications. With **uniquely designed optics** and a **rotatable end cap**, these products provide the perfect solution for those seeking high quality of light while reducing energy and maintenance costs. Immersion LED Tubes are **IP65 rated** and **NSF certified for packaged and fresh food areas**. Each Type A LED tube is operated by an internal driver and runs on electronic T8 instant-start or programmed start ballasts.\* Each Type C LED tube requires a Current remote LED Driver.\*\*

### FEATURES

- NSF approved for fresh-food areas (Type C only)
- Rotatable end cap to position light on products
- Optics designed specifically for commercial refrigeration applications
- Available in 3000K, 3500K, 4000K, and 5000K color temperatures
- 85 CRI
- 50,000 hour rated life

### ACCESSORIES

- LED tubes cover (sold separately)  
Product code: 93038792d life



### BENEFITS

- Fast and easy LED upgrade
- Low energy LFL replacement
- 66% longer life than LFL (50,000 vs. 30,000 hours)
- Shatter resistant
  - prevents breakage and downtime
- Easy disposal, non-hazardous waste

### CERTIFICATIONS/MARKINGS

- UL, UL Classified Retrofit, UL (NSF2 - Packaged & Fresh Food Areas), UL Damp Rated
- \* Type A tubes are approved for Packaged foods only.



# Immersion™ LED Tubes

## Refrigerated Display Lighting

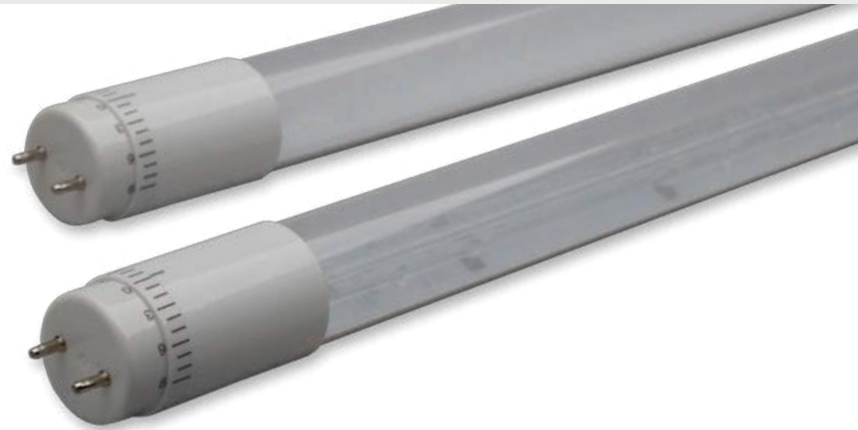
Project Name \_\_\_\_\_

Date \_\_\_\_\_ Type \_\_\_\_\_

Notes \_\_\_\_\_

## Which Immersion™ LED tube is the best choice for your Refrigeration Display Cases?

To learn more about Immersion LED Tubes, go to: [www.LED.com](http://www.LED.com)



Current Recommends - Easiest Installation

Current Recommends - Best Performance

### UL TYPE A

### UL TYPE C

LED Tube with Integrated Driver Wired to Existing LFL Ballast\*

LED Tube with Remote Driver\*\*



Delivers lowest installation cost. No rewiring required for installation.



Medium installation cost. Requires rewiring for installation.



Limited dimming capabilities.



Controllable dimming system.



Reduced system efficacy.



Best system efficacy.



System compatibility dependent upon LFL ballast.



Optimal system compatibility between Immersion™ LED tube and Immersion™ LED Driver.



Life dependent on LED tube and LFL ballast.



Low-voltage connection to sockets minimizes shock hazard.

\* For Ballast compatibility, see RDL Tubes Ballast Compatibility Chart on the website [www.LED.com](http://www.LED.com)

\*\*For power supply information refer to RDL Power Supply Guide on the website [www.LED.com](http://www.LED.com)

# Immersion™ LED Tubes

## Refrigerated Display Lighting

Project Name \_\_\_\_\_

Date \_\_\_\_\_ Type \_\_\_\_\_

Notes \_\_\_\_\_

## Product Description Logic

Product	DC Wattage Output	LFL Replacement	Length in ft.	CRI	Color Temperature	Product Application	Position of Product	UL Type
GELED	15 = 15 watts	T8 = T8 LFL product	4 = 4 ft	8 = 85 CRI	30 = 3000K	R = Refrigeration	V = Vertical	A = UL Type A
					35 = 3500K		C = Canopy	C = UL Type C
					40 = 4000K		U = Undershelf	
					45 = 4500K			
					50 = 5000K			

## Technical Specifications

		Prod Info			Performance Data			Approved For	
		Product Code	Product Description	Nominal Lens Item Description	Power (DC Watts)*	Lumens	Lumens per Watt	Package Food Cases	Open Food Cases
UL Type A 85 CRI	3000K	93030988	GELED14T8/4/830/RCA	48" (1,200 mm) Canopy	15.2	1,630	107	✓	
		93031002	GELED08T8/4/830/RUA	48" (1,200 mm) Undershelf	8.1	834	104	✓	
	3500K	93030989	GELED14T8/4/835/RCA	48" (1,200 mm) Canopy	15.2	1,687	111	✓	
		93031003	GELED08T8/4/835/RUA	48" (1,200 mm) Undershelf	8.1	863	107	✓	
		93031006	GELED11T8/4/835/RVA	48" (1,200mm) Vertical	11.5	1,174	102	✓	
		93031009	GELED14T8/5/835/RVA	60" (1,513 mm) Vertical	13.2	1,468	111	✓	
		93031012	GELED15T8/6/835/RVA	72" (1,701mm) Vertical	15.9	1,761	111	✓	
	4000K	93030990	GELED14T8/4/840/RCA	48" (1,200 mm) Canopy	15.2	1,732	114	✓	
		93031004	GELED08T8/4/840/RUA	48" (1,200 mm) Undershelf	8.1	886	110	✓	
		93031007	GELED11T8/4/840/RVA	48" (1,200mm) Vertical	11.5	1,205	104	✓	
		93031010	GELED14T8/5/840/RVA	60" (1,513 mm) Vertical	13.2	1,506	114	✓	
		93031013	GELED15T8/6/840/RVA	72" (1,701mm) Vertical	15.9	1,807	113	✓	
	5000K	93031001	GELED14T8/4/850/RCA	48" (1,200 mm) Canopy	15.2	1,787	118	✓	
		93031005	GELED08T8/4/850/RUA	48" (1,200 mm) Undershelf	8.1	913	113	✓	
		93031008	GELED11T8/4/850/RVA	48" (1,200mm) Vertical	11.5	1,244	108	✓	
		93031011	GELED14T8/5/850/RVA	60" (1,513 mm) Vertical	13.2	1,555	118	✓	
		93031014	GELED15T8/6/850/RVA	72" (1,701mm) Vertical	15.9	1,865	117	✓	

\* LED tubes were tested with a T8 ballast that has a normal ballast factor.

# Immersion™ LED Tubes

## Refrigerated Display Lighting

Project Name \_\_\_\_\_

Date \_\_\_\_\_ Type \_\_\_\_\_

Notes \_\_\_\_\_

## Technical Specifications

		Prod Info			Performance Data			Approved For	
		Product Code	Product Description	Nominal Lens Item Description	Power (DC Watts)**	Lumens	Lumens per Watt	Package Food Cases	Open Food Cases
UL Type C 85 CRI	3000K	93033053	GELED15T8/4/830/RCC	48" (1,200 mm) Canopy	15.1	1,530	101	✓	✓
		93033627	GELED06T8/4/830/RUC	48" (1,200 mm) Undershelf	5.8	676	117	✓	✓
	3500K	93033054	GELED15T8/4/835/RCC	48" (1,200 mm) Canopy	15.1	1,584	105	✓	✓
		93033628	GELED06T8/4/835/RUC	48" (1,200 mm) Undershelf	5.8	699	121	✓	✓
		93033631	GELED12T8/4/835/RVC	48" (1,200mm) Vertical	11.5	1,174	102	✓	✓
		93033634	GELED14T8/5/835/RVC	60" (1,513 mm) Vertical	14.4	1,468	102	✓	✓
		93031015	GELED18T8/6/835/RVC	72" (1,701mm) Vertical	17.3	1,761	102	✓	✓
	4000K	93033625	GELED15T8/4/840/RCC	48" (1,200 mm) Canopy	15.1	1,625	107	✓	✓
		93033629	GELED06T8/4/840/RUC	48" (1,200 mm) Undershelf	5.8	718	125	✓	✓
		93033632	GELED12T8/4/840/RVC	48" (1,200mm) Vertical	11.5	1,205	105	✓	✓
		93033635	GELED14T8/5/840/RVC	60" (1,513 mm) Vertical	14.4	1,506	105	✓	✓
		93031016	GELED18T8/6/840/RVC	72" (1,701mm) Vertical	17.3	1,807	105	✓	✓
	5000K	93033626	GELED15T8/4/850/RCC	48" (1,200 mm) Canopy	15.1	1,677	111	✓	✓
		93033630	GELED06T8/4/850/RUC	48" (1,200 mm) Undershelf	5.8	741	129	✓	✓
		93033633	GELED12T8/4/850/RVC	48" (1,200mm) Vertical	11.5	1,244	108	✓	✓
		93033636	GELED14T8/5/850/RVC	60" (1,513 mm) Vertical	14.4	1,555	108	✓	✓
		93031017	GELED18T8/6/850/RVC	72" (1,701mm) Vertical	17.3	1,865	108	✓	✓

\*\* Rated DC watts, to convert to AC watts, divide by driver efficiency. Typical Immersion LED Tube drivers are 90% efficient.

## LED Driver Performance Data

	GEPS6100NCCON-SY; 24V-100W Product Code: 13798	GELP24-100U-GLX; 24V-100W Product Code: 93027033	GEPS24D-100U-NA; 24V-100W Product Code: 93077673G	GEPS24D-60U-GLX; 24V-60W Product Code: 93159242
Dimming	Yes (Step - Contact Input)	No	Yes (0-10V)	Yes (0-10V)
Output Power (Watts)	96	96	60	60
Input Voltage (VAC)	120-240V	120-277V	120-277V	120-277V
Input Line Frequency (Hz)	50/60	50/60	50/60	50/60
Length	10.7 inch (273mm)	9.5 inch (241mm)	9.5 inch (241mm)	5.8 inch (148.2mm)
Width	1.7 inch (43mm)	1.7 inch (43mm)	1.7 inch (43mm)	1.8 inch (45.6mm)
Height	1.1 inch (28mm)	1.0 inch (25.4mm)	1.0 inch (25.4mm)	1.0 inch (25.4mm)

For use with the UL Type C Tubes listed above.

Refer to Power Supply Guide on website for detailed information on Immersion™ Power Supplies.



Electrical products must not be thrown out with domestic waste. They must be taken to a communal collecting point for environmentally friendly disposal in accordance with local regulations. Contact your local authorities or stockist for advice on recycling. The packaging material is recyclable. Dispose of the packaging in an environmentally friendly manner and make it available for the recyclable material collection-service.