

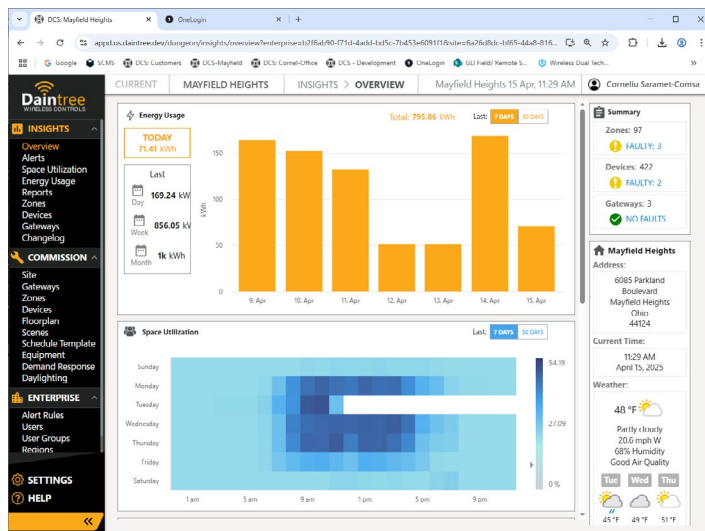
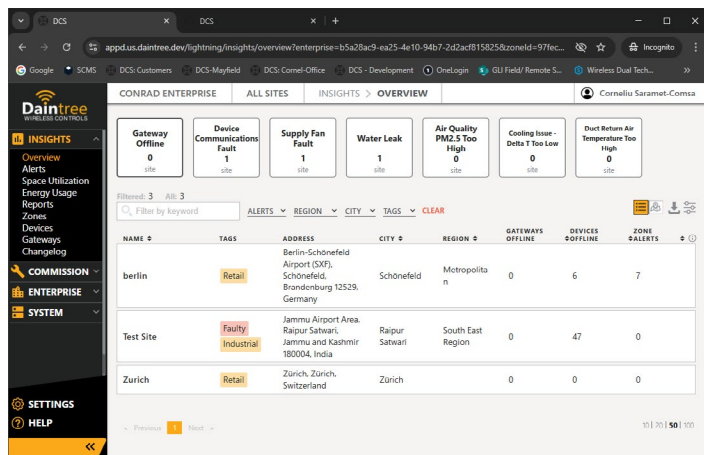
Daintree® Wireless Controls

Daintree® Controls Software

Project Name _____

Date _____ Type _____

Catalog Number _____



Description

Daintree® Networked is a powerful, class-leading enterprise multi-site management platform. At the core of each daintree deployment is a wireless networked system that is operated through the web-based/cloud hosted **Daintree® Controls Software (DCS)**.

The Daintree® Controls Software (DCS) is a comprehensive platform for optimizing building operations and enhancing energy efficiency, featuring real-time monitoring, data-rich management, and graphical visualization of energy consumption patterns. It offers easy setup for efficient lighting control, remote access for convenient management, and ensures data security and compliance with energy codes. The system's scalability and flexibility allow for integration with other building management systems and enable IoT capabilities, making it future-proof solution for smart building management.

Key Features and Benefits

Enterprise Dashboard	System Status summary across the entire portfolio
Alarms	Customizable alarms; site level alarms history
Notifications	User selectable alarm notifications
Tags and filters	Device/zone/site tagging allows for refined system filtering
Global Scheduling	Schedules can be applied/updated across multiple sites & zones.
HVAC controls	HVAC controls and environmental sensors
Reports	Zone & device level reports, alarm history. Time series charts
Graphic floor plans	Interactive custom floor plans and animated graphic occupancy and energy usage screens
SAML integration	Single Sign-On integration
Changelog	Monitors any user interaction
Role-based access control	User groups with different permission levels for different sites
Built-in ADR	Automatic Demand Response - ADR 2.0 including ADR test mode feature
IoT Advanced Applications	Space utilization; People counting
API Access	Haystack API allows real-time data to funnel into third-party or custom app
End-user support	Hosting and support included in the annual subscription