



CUSTOMER NAME \_\_\_\_\_

PROJECT NAME \_\_\_\_\_

DATE \_\_\_\_\_ TYPE \_\_\_\_\_

CATALOG NUMBER \_\_\_\_\_

## EAP1/AREA/SITE/ROAD LIGHTER

- Compact sleek design with multiple lumen output configurations and simple installation
- Field switchable lumens (13,000 - 23,000)
- Field switchable CCT (3000K, 4000K, 5000K)
- Ships with Type 3, Type 4, and Type 5 optics, which can easily be changed in the field
- Mounting options include Arm for Round or Square Pole and Knuckle Slipfitter. Wall mountable with optional accessory
- Field installable occupancy sensor available as an optional accessory
- Default Configuration: 150W, 4000K, Type 3 Distribution

### Construction

Die-cast housing with hidden vertical heat fins that are optimal for heat dissipation while keeping a clean smooth outer surface

Corrosion resistant, die-cast aluminum housing with powder coat paint finish

Separate optical and electrical compartment for improved thermal management and optimum component operation

TGIC thermoset polyester powder paint finish applied at nominal 2.5 mil thickness

### Optics

Entire optical aperture illuminates to create a larger luminous surface area resulting in a low glare appearance without sacrificing optical performance

Ships with Type 3, Type 4, and Type 5 optics, which are easily switchable in the field.

Field switchable CCT (3000K, 4000K, 5000K)

Zero uplight at 0 degrees of tilt

### Installation

Arm mounting with Evolve drill pattern and knuckle capable of rotating upward 30-degrees at 5-degree increments.

Slipfitter for 2-3/8" OD tenons with built-in knuckle rotatable upward and downward 90-degrees at 5-degree increments.

### Electrical

Universal 120-347V

Ambient operating temperature -40°C to 50°C

Drivers have greater than 90% power factor and less than 20% THD

LED drivers have output power overvoltage, over-current protection and short circuit protection with auto recovery

10KV Surge protection is standard

### Control

0-10 Volt Dimmable Driver Standard controls

### Certifications

Listed to UL1598 and CSA C22.2#250.0-24 for wet locations

3G rated for ANSI C136.31 high vibration applications

IP65 optical assembly

### Warranty

5 Year warranty

CUSTOMER NAME \_\_\_\_\_  
 PROJECT NAME \_\_\_\_\_  
 DATE \_\_\_\_\_ TYPE \_\_\_\_\_  
 CATALOG NUMBER \_\_\_\_\_

Accessories (ordered separately)

## ORDERING INFO

### STOCK ORDERING INFORMATION

Catalog Number	Includes	Lumens	Wattage	CCT	Voltage	Distribution	Finish
EAP1150WLSCSARM	Arm Mount	13,032 - 22,944	85-150	3000K, 4000K, 5000K	120-347V	Type 3, Type 4, Type 5	Dark Bronze
EAP1150WLSCSKSF	Knuckle Slipfitter	13,032 - 22,944	85-150	3000K, 4000K, 5000K	120-347V	Type 3, Type 4, Type 5	Dark Bronze

### ACCESSORIES (ORDERED SEPARATELY)

Catalog Number	Description
HB03DPR	Field Installed Occupancy and Daylight Sensor
HB03DPR-REMOTE	Programming Remote for HB03DPR Sensor (Typically one required per site to program the sensors)
SGS-HSS	Field Installed House Side Shield
241-C-DBT	Flat surface bracket (Wall Mount Accessory. Compatible with slipfitter mounting only.)

HB03DPR



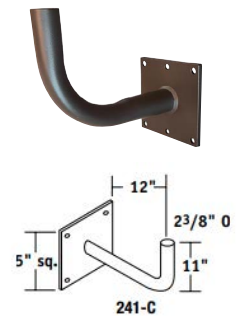
House Side Shield



HB03DPR-Remote



241-C-DBT



CUSTOMER NAME \_\_\_\_\_  
 PROJECT NAME \_\_\_\_\_  
 DATE \_\_\_\_\_ TYPE \_\_\_\_\_  
 CATALOG NUMBER \_\_\_\_\_

## Performance Data

Description	Nominal Wattage	System Watts	Dist. Type	5K (5000K NOMINAL 80 CRI)					4K (4000K NOMINAL 80 CRI)					3K (5000K NOMINAL 80 CRI)				
				Lumens	LPW	B	U	G	Lumens	LPW	B	U	G	Lumens	LPW	B	U	G
EAP1	85	81.7	3	13826	169	2	0	2	13972	171	2	0	2	13244	162	2	0	2
			4	13840	170	2	0	2	13986	171	2	0	2	13257	162	2	0	2
			5	13605	166	4	0	3	13749	168	4	0	3	13032	159	4	0	3
	120	116	3	18813	162	3	0	3	19011	164	3	0	3	18020	155	3	0	3
			4	18807	162	3	0	3	19005	164	3	0	3	18014	155	3	0	3
			5	18490	159	4	0	4	18685	161	4	0	4	17711	153	4	0	3
	150	145.1	3	22666	156	3	0	3	22905	158	3	0	3	21711	150	3	0	3
			4	22704	156	3	0	3	22944	158	3	0	3	21747	150	3	0	3
			5	22277	154	5	0	4	22512	155	5	0	4	21338	147	5	0	4

1 VAC input Lumen values are from photometric test performed in accordance with IESNA LM-79-08. Data is considered to be representative of the configurations. Actual performance may differ as a result of end-user environment and application.

NOTE: Default Configuration shaded above

## Electrical Data

FAMILY	NOMINAL WATTAGE	INPUT VOLTAGE (VOLTS)	CURRENT (AMPS)	SYSTEM POWER (WATTS)
EAP1	85	120	0.68	81.7
		208	0.39	
		240	0.34	
		277	0.29	
		347	0.24	
	120	120	0.97	116.0
		208	0.56	
		240	0.48	
		277	0.42	
	150	120	1.21	145.1
		208	0.70	
		240	0.60	
277		0.52		
347		0.42		

## Projected Lumen Maintenance

CALCULATION METHOD	AMBIENT TEMP	25,000 HRS	36,000 HRS	54,000 HRS
TM-21-11	25°C / 77°F	0.95	0.92	0.89
	50°C / 122°F	0.94	0.91	0.87
TM-21-21	25°C / 77°F	0.95	0.92	0.89
	50°C / 122°F	0.94	0.91	0.87v

## Luminaire Ambient Temperature Factor (LATF)

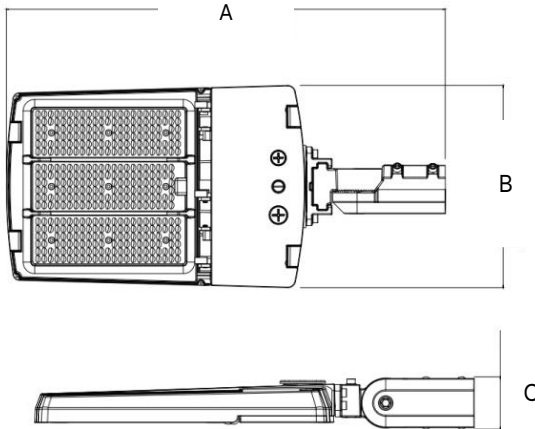
Ambient Temperature		Lumen Multiplier
0° C	32° F	1.06
10° C	50° F	1.03
20° C	68° F	1.01
25° C	77° F	1.00
30° C	86° F	0.99
40° C	104° F	0.97

Use these factors to determine relative lumen output for average ambient temperatures from 0-40°C (32-104°F).

CUSTOMER NAME \_\_\_\_\_  
 PROJECT NAME \_\_\_\_\_  
 DATE \_\_\_\_\_ TYPE \_\_\_\_\_  
 CATALOG NUMBER \_\_\_\_\_

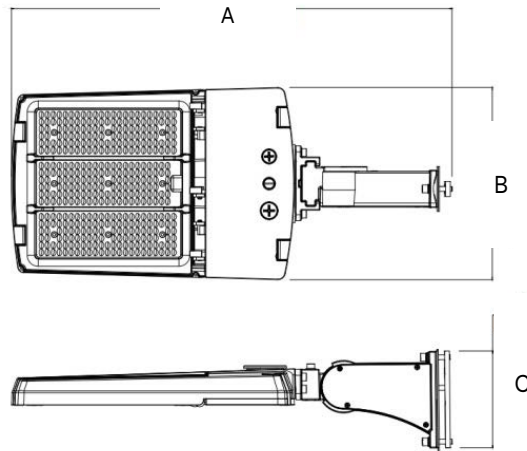
## Dimensions

**EAP1 Knuckle Slipfitter**



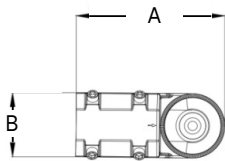
A	B	C	Weight
27.2"	12.5"	3.2"	EAP1 11.5 lbs (5.2 kgs)
691mm	318mm	81mm	

**EAP1 Arm**



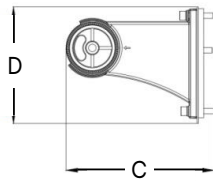
A	B	C	Weight
28.8"	12.5"	6.3"	EAP1 11.5 lbs (5.2 kgs)
732mm	318mm	160mm	

**Slipfitter**

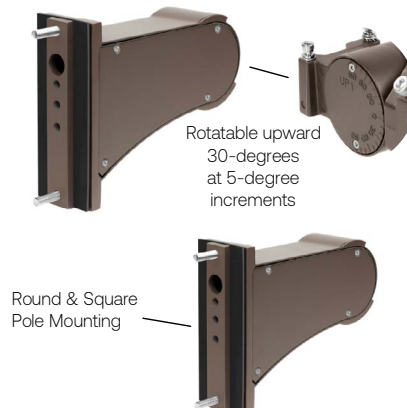
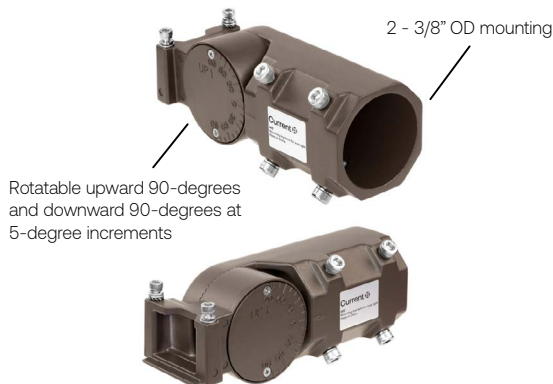


A	B	C	D
6.9"	3.0"	8.6"	6.7"
691mm	318mm	81mm	81mm

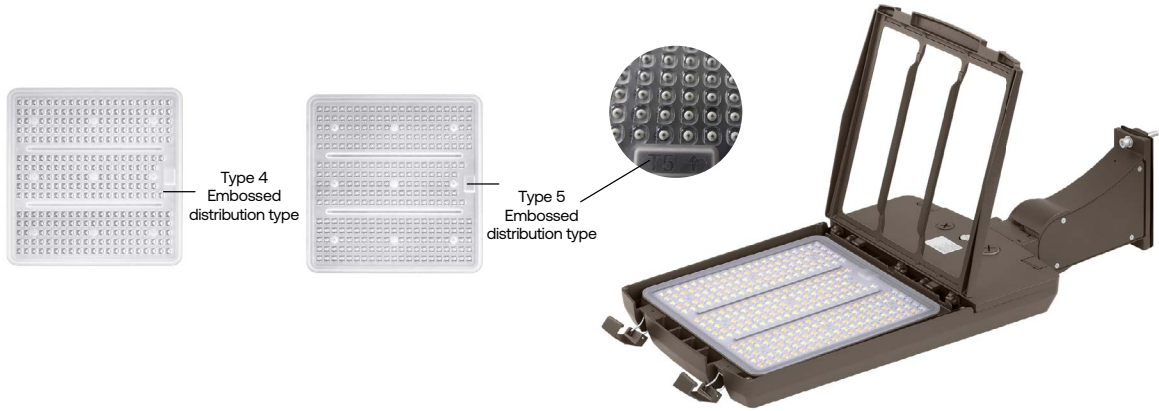
**Arm**



EPA (ft <sup>2</sup> )C		Configuration
Single Fixture	0.62	
Two at 180°	.53	
Two at 90°	.99	
Three at 90°	.53	
Three at 120°	1.29	
Four at 90°	1.53	

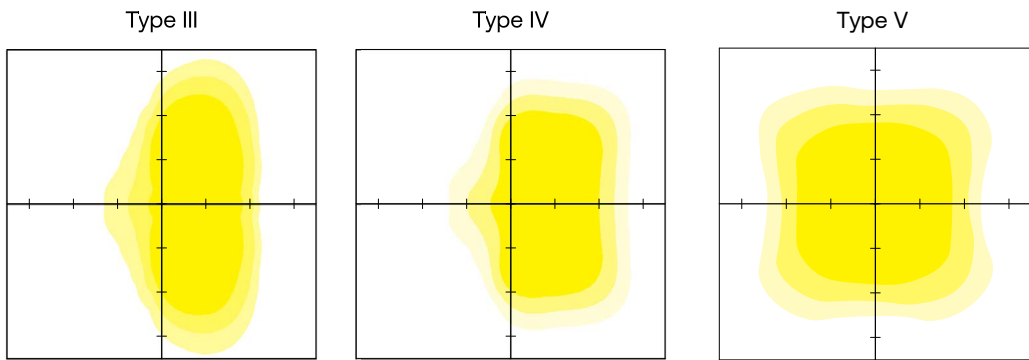


CUSTOMER NAME \_\_\_\_\_  
 PROJECT NAME \_\_\_\_\_  
 DATE \_\_\_\_\_ TYPE \_\_\_\_\_  
 CATALOG NUMBER \_\_\_\_\_



## Photometry

The following diagrams represent the general distribution options offered for this product.



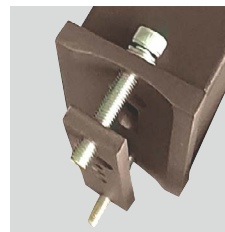
## Additional Information



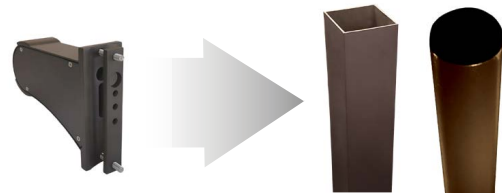
**Arm Mount** – Fixture ships with integral arm for ease of installation. Compatible with Evolve drill patterns.



**Slipfitter** – Fits 2-3/8" OD arms Roadway applications.



Remove black gasket to serve as RPA for 4"-5" OD poles



**ROUND/SQUARE POLE ADAPTER**

