

GEOPAK Series 2 Low Glare

SIZE 2 - TRP2/RD12 LOW GLARE

SPECIFICATIONS

Applications:

Medium sized architectural wallpacks in two stylish shapes accentuate building architecture and provide excellent illumination and uniformity

Construction:

- Die-cast aluminum housing and door
- Seven powder coat standard finishes, plus custom color options

LED/Optics:

- Precision crafted optics and reflectors provide up to 150 LPW and zero pixelation over the lens for maximum visual comfort
- Wide Throw and Forward Throw distributions available
- 3000K - 70 CRI, 4000K - 70 CRI, and 5000K - 70 CRI, CCT nominal

Electrical:

- Optional Dual Drivers & Dual Power Feeds for 50 and 70 watt versions
- 120-277, 347 and 480 voltage, 50/60Hz
- Power factor ≥ 90%
- THD (Total Harmonic Distortion) <20%
- Ambient operating temperature -40°C to 40°C

Installation/Mounting:

- Quick-mount adapter with gasket seal provides easy installation to wall or to recessed junction box (4" square junction box). Fixture attaches by two Allen-head hidden fasteners for tamper resistance.
- Black box accessory available for surface conduit application

Options/Controls:

- Drivers are 0-10V dimming standard
- Universal button photocontrol for dusk to dawn energy savings
- Occupancy sensor options available for complete on/off and dimming control

Secondary Distribution:

- Optional secondary distributions provide approximately 5% uplight for lighting building facades and/or providing direct/indirect lighting for under canopy applications
- Available in three distribution including Wall Graze, Spot/Column and Canopy

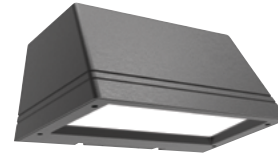
Listings:

- IP65 rated housing
- DesignLights Consortium® (DLC) qualified. Please refer to the DLC website for specific product qualifications at www.designlights.org
- Zero uplight (U0), dark sky, neighbor friendly (excludes uplight versions)
- Drivers IP66 and RoHS compliant

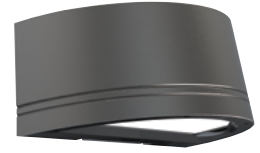
Warranty:

- 5 year warranty

PRODUCT IMAGE(S)

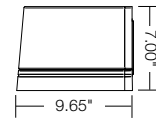
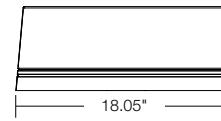


Trapezoid

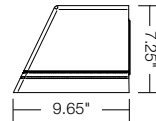
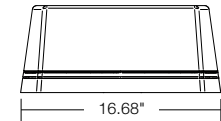


Radius

DIMENSIONS



RD12
Weight:
16 lbs (7.3 kg)



TRP2
Weight:
16 lbs (7.3 kg)

SHIPPING INFORMATION

Catalog Number	G.W(kg)/CTN	Carton Dimensions		
		Length Inch (cm)	Width Inch (cm)	Height Inch (cm)
RD12	18 (8.2)	20.5 (52)	9.5 (24)	12 (30)
TRP2	16 (7.3)	18.5 (47)	9.5 (24)	11.5 (29)

CERTIFICATIONS/LISTINGS



*3000K and warmer CCTs only

ORDERING INFORMATION ORDERING EXAMPLE: TRP2-D-30-3K7-FT-UNV-UG-GT-PC

FAMILY	LEDS - WATTAGE	DISTRIBUTION	VOLTAGE	FINISH	CONTROL OPTIONS	OPTIONS
TRP2 Trapezoid	D-20 20w Low Glare Diffuse	FT Forward Throw Diffused	UNV 120-277V	BL Black Textured	PC Button Photocontrol	SF ³ Single Fuse & Fuse Holder
RD12 Radius	D-30 30w Low Glare Diffuse	WT Wide Throw Diffused	120 120V	DB Dark Bronze Textured	SCP ^{4,5} Programmable occupancy sensor, factory default is 10% light output	DF ³ Double Fuse & Fuse Holder
	D-50 50w Low Glare Diffuse		208 208V	GT Graphite Textured	SCO ⁴ Sensor Control, On/Off	2DR ⁶ Dual Drivers
	D-70 70w Low Glare Diffuse		240 240V	GYS Light Gray Smooth	SPEC SCP/SCO MOUNT HEIGHT	2PF ⁶ Dual Power Feeds
	CCT		277 277V	PS Platinum Silver Smooth	-8F Up to 8ft mount height	
	3K7 3000K, 70CRI		UHV ¹ 347/480V	WH White Textured	-20F Up to 20ft mount height	
	4K7 4000K, 70CRI		347 ¹ 347V	CC Custom Color		
	5K7 5000K, 70CRI		480 ¹ 480V			

SECONDARY DISTRIBUTION

- BLANK Downlight Only
- UG² Uplight Wall Graze
- UC² Uplight Canopy
- US² Uplight Spot/Column

¹ 70 watt version only, not available with PC, SCP or SCO sensors

² Not available with SF, DF, 2DR or 2PF electrical options

³ Must specify voltage

⁴ PCU option not applicable, included in sensor

⁵ Must order minimum of one remote control to program dimming settings, 0-10V fully adjustable dimming with automatic daylight calibration and different time delay settings

⁶ Not available with 20w, 30w or uplight versions

GEOPAK Series 2 Low Glare

SIZE 2 - TRP2/RD12 LOW GLARE

ACCESSORIES - Order separately

Catalog Number	Description
SCP-REMOTE*	Remote control for SCP option. Order at least one per project to program and control dimming settings
BB-GEO-XX	Black box with 4 - 1/2" threaded conduit holes, specify finish by replacing "XX" with finish selection, eg. Dark Bronze "DB"

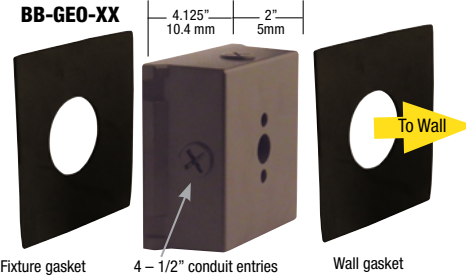
* Must order minimum of one remote control to program dimming settings, 0-10V fully adjustable dimming with automatic daylight calibration and different time delay settings.

** When ordering with SiteSync, one of the following interface options must be chosen and ordered separately. Each option contains the SiteSync License, GUI and Bridge Node.

+ If needed, an additional Bridge Node can be ordered.



BB-GEO-XX – Mounted to luminaire



INPUT POWER CONSUMPTION

# OF LEDS	VERSION	INPUT VOLTAGE (V)	CURRENT (Amps)	SYSTEM POWER (w)
180	Downlight Only	120	0.18	21
		277	0.08	21
		120	0.28	33
		277	0.12	33
		120	0.41	49
		277	0.18	49
		120	0.52	62
		277	0.22	62
		347	0.18	62
	With Uplight	480	0.13	62
		120	0.18	22
		277	0.08	22
		120	0.29	35
		277	0.13	35
		120	0.43	52
		277	0.19	52
		120	0.55	66
		277	0.24	66
347	0.19	66		
480	0.14	66		

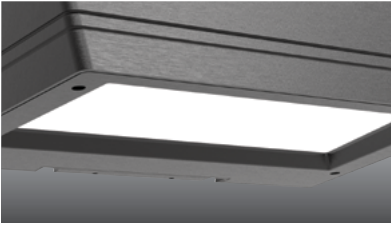
PERFORMANCE DATA - LOW GLARE

SECONDARY DISTRIBUTION	NOMINAL WATTS	SYSTEM WATTS	MAIN DISTR. TYPE	5K (5000K nominal, 70 CRI)					4K (4000K nominal, 70 CRI)					3K (3000K nominal, 70 CRI)				
				LUMENS	LPW	B	U	G	LUMENS	LPW	B	U	G	LUMENS	LPW	B	U	G
None	D-20	21.0	FT	3,082	147	1	0	1	3,067	146	1	0	1	2,883	137	1	0	1
			WT	3,195	152	1	0	0	3,179	151	1	0	0	2,988	142	1	0	0
	D-30	33.4	FT	4,995	150	1	0	1	4,970	149	1	0	1	4,672	140	1	0	1
			WT	5,178	155	1	0	1	5,152	154	1	0	1	4,843	145	1	0	1
	D-50	48.7	FT	7,094	146	1	0	1	7,058	145	1	0	1	6,635	136	1	0	1
			WT	7,353	151	1	0	1	7,316	150	1	0	1	6,877	141	1	0	1
	D-70	61.8	FT	8,669	140	1	0	1	8,626	140	1	0	1	8,108	131	1	0	1
			WT	8,986	145	1	0	1	8,941	145	1	0	1	8,405	136	1	0	1
UC (Canopy)	D-20	22.3	FT	2,991	134	1	3	1	2,976	133	1	3	1	2,798	125	1	3	1
			WT	3,325	149	1	3	0	3,309	148	1	3	0	3,110	139	1	3	0
	D-30	35.5	FT	4,847	137	1	3	1	4,823	136	1	3	1	4,534	128	1	3	1
			WT	5,389	152	1	3	1	5,362	151	1	3	1	5,040	142	1	3	1
	D-50	51.7	FT	6,884	133	1	3	1	6,850	132	1	3	1	6,439	125	1	3	1
			WT	7,653	148	1	3	1	7,615	147	1	3	1	7,158	138	1	3	1
	D-70	65.7	FT	8,413	128	1	3	1	8,371	127	1	3	1	7,869	120	1	3	1
			WT	9,353	142	1	3	1	9,306	142	1	3	1	8,748	133	1	3	1
UG (Wall Graze)	D-20	22.3	FT	2,966	133	1	3	1	2,952	132	1	3	1	2,774	124	1	3	1
			WT	3,302	148	1	3	0	3,286	147	1	3	0	3,089	139	1	3	0
	D-30	35.5	FT	4,808	135	1	3	1	4,784	135	1	3	1	4,497	127	1	3	1
			WT	5,352	151	1	3	1	5,325	150	1	3	1	5,006	141	1	3	1
	D-50	51.7	FT	6,827	132	1	3	1	6,793	131	1	3	1	6,386	124	1	3	1
			WT	7,600	147	1	3	1	7,562	146	1	3	1	7,109	137	1	3	1
	D-70	65.7	FT	8,344	127	1	3	1	8,302	126	1	3	1	7,804	119	1	3	1
			WT	9,288	141	1	3	1	9,242	141	1	3	1	8,687	132	1	3	1
US (Spot/Column)	D-20	22.3	FT	3,156	142	1	3	1	3,140	141	1	3	1	2,952	132	1	3	1
			WT	3,316	149	1	3	0	3,300	148	1	3	0	3,102	139	1	3	0
	D-30	35.5	FT	5,114	144	1	3	1	5,089	143	1	3	1	4,784	135	1	3	1
			WT	5,375	151	1	3	1	5,348	151	1	3	1	5,027	142	1	3	1
	D-50	51.7	FT	7,263	140	1	3	1	7,227	140	1	3	1	6,793	131	1	3	1
			WT	7,633	148	1	3	1	7,595	147	1	3	1	7,140	138	1	3	1
	D-70	65.7	FT	8,876	135	1	3	1	8,832	134	1	3	1	8,302	126	1	3	1
			WT	9,328	142	1	3	1	9,282	141	1	3	1	8,725	133	1	3	1

GEOPAK Series 2 Low Glare

SIZE 2 - TRP2/RD12 LOW GLARE

LOW - GLARE



Designed for optimal visual comfort and maximum performance, the low glare versions provide excellent illumination and uniformity with zero LED pixelation.

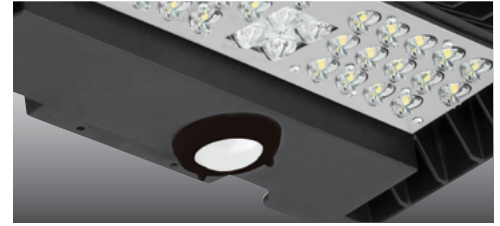
UPLIGHT



Optional upright distributions provide accent lighting for columns, canopies or building facades

The wall graze also creates a 50/50 appearance on the wall while still providing general illumination on the ground

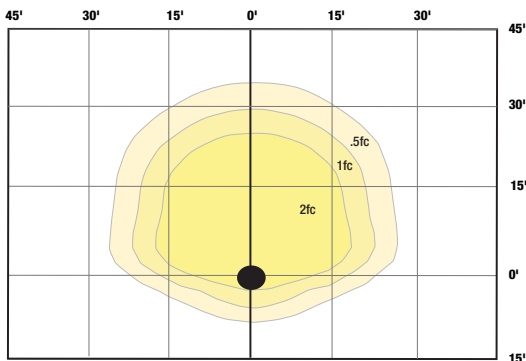
CONTROL OPTIONS



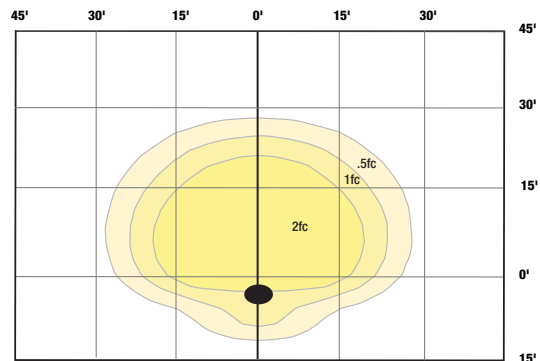
Programmable occupancy sensor offers greater control and energy savings with adjustable delay and dimming levels (Factory default is 10%).

PHOTOMETRICS

Mounting Height 15ft



FORWARD THROW



WIDE THROW

UPLIGHT GRAZE



UPLIGHT SPOT/COLUMN

