

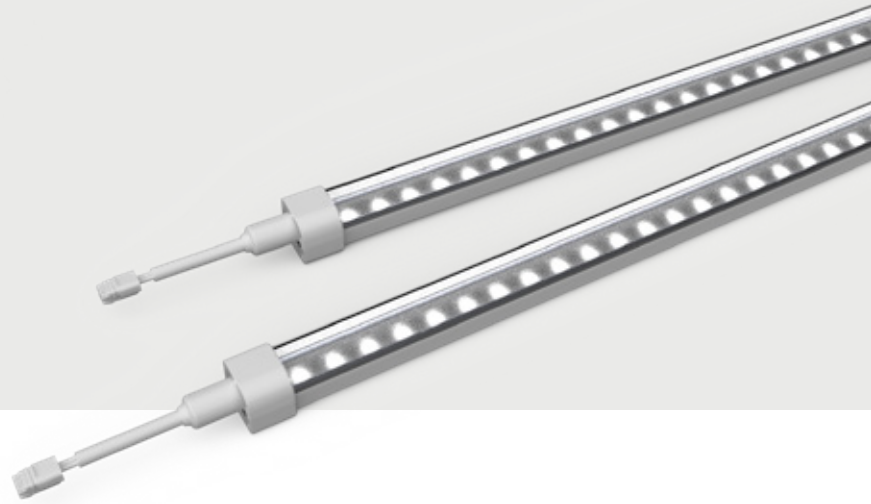
## Elite

Refrigerated Display Cases  
Lights for Horizontal Cases

Project Name \_\_\_\_\_

Date \_\_\_\_\_ Type \_\_\_\_\_

Notes \_\_\_\_\_



### PRODUCT DESCRIPTION

The Immersion Elite Horizontal LED system is an energy-efficient & low maintenance alternative to traditional linear fluorescent lamps for refrigerated display cases. Compact and slim in design, Immersion Elite Horizontal features two application-specific models for canopy and undershelf lighting; offering more flexibility than other LED systems for refrigerated display cases.

### APPLICATION

- Optics designed specifically for commercial refrigeration applications
- Available in 3000K, 3500K, 4000K, and 5000K color temperatures
- 85 CRI
- 50,000 hour rated life
- Fast and easy LED upgrade
- Low energy LFL replacement
- 66% longer life than LFL (50,000 vs. 30,000 hours)
- Prevents breakage and downtime

### LUMEN MAINTENANCE

- LM-79, LM-80 tests and reports are performed in accordance to IESNA standards
- Projected L70  $\geq$  50,000 life hours per IES TM-21

### ELECTRICAL SYSTEM

Input Voltages = 24VDC

### WARRANTY

5-year limited system warranty

### CERTIFICATIONS/MARKINGS

UL, CE, UKCA, IP66, UL Damp Rated

# Immersion™ Elite

## Refrigerated Display Cases

### Lights for Horizontal Cases

Project Name \_\_\_\_\_

Date \_\_\_\_\_ Type \_\_\_\_\_

Notes \_\_\_\_\_

## Components

SAP SKU	Order Code	Item Description	LED Color	Quantity
93156031	ELH1E3630CB	ELH1E3630CB, Elite Eco Canopy, 36", 3000K	Warm White	10 PCS/Box
93156033	ELH1E3640CB	ELH1E3640CB, Elite Eco Canopy, 36", 4000K	Warm White	
93156035	ELH1E4830CB	ELH1E4830CB, Elite Eco Canopy, 48", 3000K	Warm White	
93156036	ELH1E4835CB	ELH1E4835CB, Elite Eco Canopy, 48", 3500K	Warm White	
93156037	ELH1E4840CB	ELH1E4840CB, Elite Eco Canopy, 48", 4000K	Warm White	
93156043	ELH1E3630UB	ELH1E3630UB, Elite Eco Undershelf,36", 3000K	Warm White	
93156045	ELH1E3640UB	ELH1E3640UB, Elite Eco Undershelf,36", 4000K	Warm White	
93156047	ELH1E4830UB	ELH1E4830UB, Elite Eco Undershelf,48", 3000K	Warm White	
93156048	ELH1E4835UB	ELH1E4835UB, Elite Eco Undershelf,48", 3500K	Warm White	
93156049	ELH1E4840UB	ELH1E4840UB, Elite Eco Undershelf,48", 4000K	Warm White	
93156063	ELH1E1230CS	ELH1E1230CS, Elite Eco Canopy, 12", 3000K	Warm White	1 PC/Box
93156064	ELH1E1235CS	ELH1E1235CS, Elite Eco Canopy, 12", 3500K	Warm White	
93156065	ELH1E1240CS	ELH1E1240CS, Elite Eco Canopy, 12", 4000K	Warm White	
93156066	ELH1E1250CS	ELH1E1250CS, Elite Eco Canopy, 12", 5000K	White	
93156067	ELH1E3630CS	ELH1E3630CS, Elite Eco Canopy, 36", 3000K	Warm White	
93156068	ELH1E3635CS	ELH1E3635CS, Elite Eco Canopy, 36", 3500K	Warm White	
93156069	ELH1E3640CS	ELH1E3640CS, Elite Eco Canopy, 36", 4000K	Warm White	
93156070	ELH1E3650CS	ELH1E3650CS, Elite Eco Canopy, 36", 5000K	White	
93156071	ELH1E4830CS	ELH1E4830CS, Elite Eco Canopy, 48", 3000K	Warm White	
93156072	ELH1E4835CS	ELH1E4835CS, Elite Eco Canopy, 48", 3500K	Warm White	
93156073	ELH1E4840CS	ELH1E4840CS, Elite Eco Canopy, 48", 4000K	Warm White	
93156074	ELH1E4850CS	ELH1E4850CS, Elite Eco Canopy, 48", 5000K	White	
93156075	ELH1E1230US	ELH1E1230US, Elite Eco Undershelf,12", 3000K	Warm White	
93156076	ELH1E1235US	ELH1E1235US, Elite Eco Undershelf,12", 3500K	Warm White	
93156077	ELH1E1240US	ELH1E1240US, Elite Eco Undershelf,12", 4000K	Warm White	
93156078	ELH1E1250US	ELH1E1250US, Elite Eco Undershelf,12", 5000K	White	
93156079	ELH1E3630US	ELH1E3630US, Elite Eco Undershelf,36", 3000K	Warm White	
93156080	ELH1E3635US	ELH1E3635US, Elite Eco Undershelf,36", 3500K	Warm White	
93156081	ELH1E3640US	ELH1E3640US, Elite Eco Undershelf,36", 4000K	Warm White	
93156082	ELH1E3650US	ELH1E3650US, Elite Eco Undershelf,36", 5000K	White	
93156083	ELH1E4830US	ELH1E4830US, Elite Eco Undershelf,48", 3000K	Warm White	
93156084	ELH1E4835US	ELH1E4835US, Elite Eco Undershelf,48", 3500K	Warm White	
93156085	ELH1E4840US	ELH1E4840US, Elite Eco Undershelf,48", 4000K	Warm White	
93156086	ELH1E4850US	ELH1E4850US, Elite Eco Undershelf,48", 5000K	White	

# Immersion™ Elite

## Refrigerated Display Cases

### Lights for Horizontal Cases

Project Name \_\_\_\_\_

Date \_\_\_\_\_ Type \_\_\_\_\_

Notes \_\_\_\_\_

## Technical Specifications

Order Code	Wavelength/CCT	Typical Brightness* (lumens/bar)	Rated Wattage* (W)
ELH1E1230CB/S	3000	400	3.6
ELH1E1235CB/S	3500		
ELH1E1240CB/S	4000		
ELH1E1250CB/S	5000		
ELH1E3630CB/S	3000	1200	10.8
ELH1E3635CB/S	3500		
ELH1E3640CB/S	4000		
ELH1E3650CB/S	5000		
ELH1E4830CB/S	3000	1600	14.4
ELH1E4835CB/S	3500		
ELH1E4840CB/S	4000		
ELH1E4850CB/S	5000		
ELH1E1230UB/S	3000	170	1.44
ELH1E1235UB/S	3500		
ELH1E1240UB/S	4000		
ELH1E1250UB/S	5000		
ELH1E3630UB/S	3000	510	4.3
ELH1E3635UB/S	3500		
ELH1E3640UB/S	4000		
ELH1E3650UB/S	5000		
ELH1E4830UB/S	3000	680	5.8
ELH1E4835UB/S	3500		
ELH1E4840UB/S	4000		
ELH1E4850UB/S	5000		

B = Bulk pack

S = Single pack

\*Typical performance at 25°C +/- 10%

# Immersion™ Elite

## Refrigerated Display Cases

### Lights for Horizontal Cases

Project Name \_\_\_\_\_

Date \_\_\_\_\_ Type \_\_\_\_\_

Notes \_\_\_\_\_

## Technical Specifications

Parameter	Specification
Power Supply	GEPS6100NCCON-SY    Input: 120-240VAC, 60/50Hz, Output: 24VDC GEPS24D-60U-GLX    Input: 120-277VAC, 60/50Hz, Output: 24VDC GELP24-100U-GLX    Input: 120-277VAC, 60/50Hz, Output: 24VDC GELP24-60U-GL    Input: 120-277VAC, 60/50Hz, Output: 24VDC
Warranty Life	5 Years*
Operating Environment	-20 °C to +25°C
Module Dimensions	NA
Warranty	Current Lighting offers a limited system warranty of up to five (5) years
System Certifications	UL Listed (c-us) #E321439, UL Classified (c-us) LED Luminaire Conversion Kit for Commercial Refrigerators and Freezers #E345823, UL Sanitation (ANSI/NSF2 Splash Zone) #SA44273, CE, UKCA, ROHS, IP66, UL Damp Rated

\* See terms and conditions.


## LED Driver Performance Data

	GEPS6100NC- CON-SY; 24V-100W Product Code: 13798	GELP24-100U-GLX; 24V-100W Product Code: 93027033	GEPS24D-100U-NA; 24V-100W Product Code: 93077673G	GEPS24D-60U- GLX; 24V-60W Product Code: 93159242	GELP24-60U-GL Product Code: 93027034
Dimming	Yes (Step - Contact Input)	No	Yes (0-10V)	Yes (0-10V)	No
Output Power (Watts)	96	96	60	60	60
Input Voltage (VAC)	120-240V	120-277V	120-277V	120-277V	120-277
Input Line Frequency (Hz)	50/60	50/60	50/60	50/60	50/60
Length	10.7 inch (273mm)	9.5 inch (241mm)	9.5 inch (241mm)	5.8 inch (148.2mm)	9.5 inch (241mm)
Width	1.7 inch (43mm)	1.7 inch (43mm)	1.7 inch (43mm)	1.8 inch (45.6mm)	1.7 inch (43mm)
Height	1.1 inch (28mm)	1.0 inch (25.4mm)	1.0 inch (25.4mm)	1.0 inch (25.4mm)	1.1 inch (28mm)

Refer to Power Supply Guide on website for detailed information on Immersion™ Power Supplies  
Please only load to within 10% of maximum Watts

## Accessories

SKU	Model Number	Description	Package Quantity
69721	GE-MT3000NCM1-SY RH30	Mounting clips	2 pcs per bag
93155838	Sealed Connector Cover	Cover to terminate the connector	10 pcs per bag
93155625	GE-JC241N-66M-66F	Jumper cable to add cable length between bars	10 pcs per bag
93155627	GE-LC241N-66F	24" (609 mm) leader cable with IP66 female connector	10 pcs per bag
93155628	GE-LC241N-66M	24" (609 mm) leader cable with IP66 male connector	10 pcs per bag
93155630	GE-LC169IN-66F	169" (4293 mm) leader cable with IP66 female connector	5 pcs per bag

 Electrical products must not be thrown out with domestic waste. They must be taken to a communal collecting point for environmentally friendly disposal in accordance with local regulations. Contact your local authorities or stockist for advice on recycling. The packaging material is recyclable. Dispose of the packaging in an environmentally friendly manner and make it available for the recyclable material collection-service.