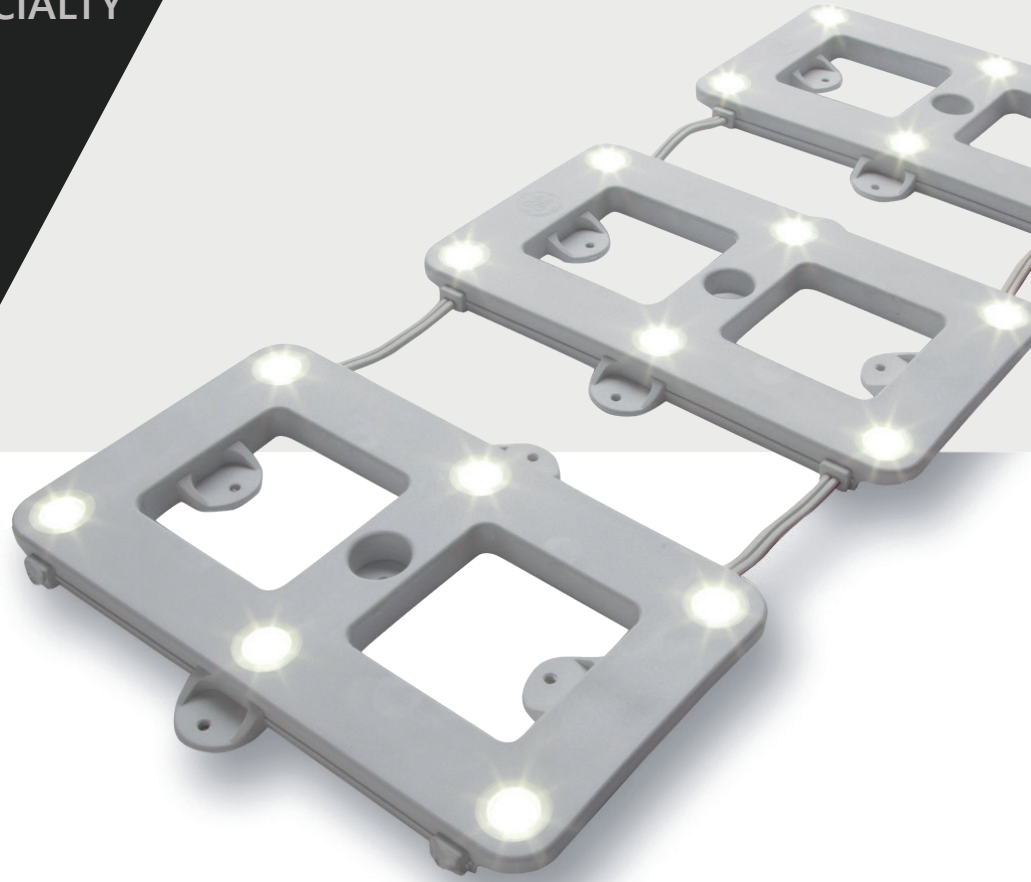


Lumination® PowerGrid

LED ARCHITECTURAL SPECIALTY

Project Name _____
Date _____ Type _____
Notes _____



PRODUCT FEATURES

Lumination® PowerGrid is a modular LED system in backlighting applications that require broad, uniform lighting. This unique LED system provides long life, energy efficiency and brilliant, uniform light across a variety of backlit applications.

FEATURES & BENEFITS

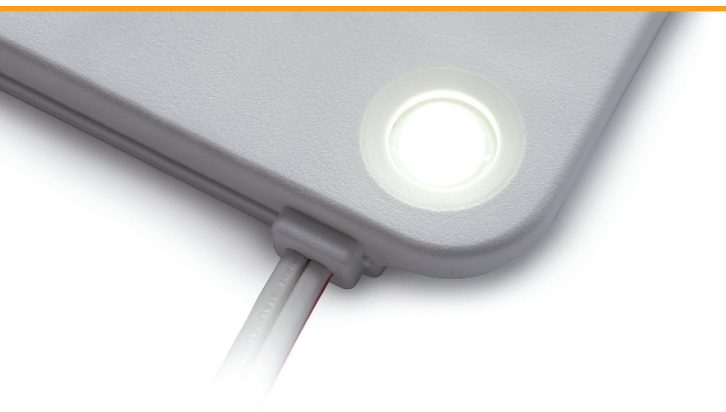
- Uniform light distribution through specialized optic
- Cut between every module for the right length
- Modular, low-voltage 24VDC system for easy installation
- Dimmable with 0-10V Dimming LED Driver
- IP54, dry or damp location rated

APPLICATION

- Backlighting as shallow as 3 inches

LED TECHNOLOGY

- Long rated life: 50,000 hours
- Energy Efficient
- 5 year limited warranty
- No UV emissions



Lumination® PowerGrid

LED ARCHITECTURAL SPECIALTY

Dimensional Details

Project Name _____

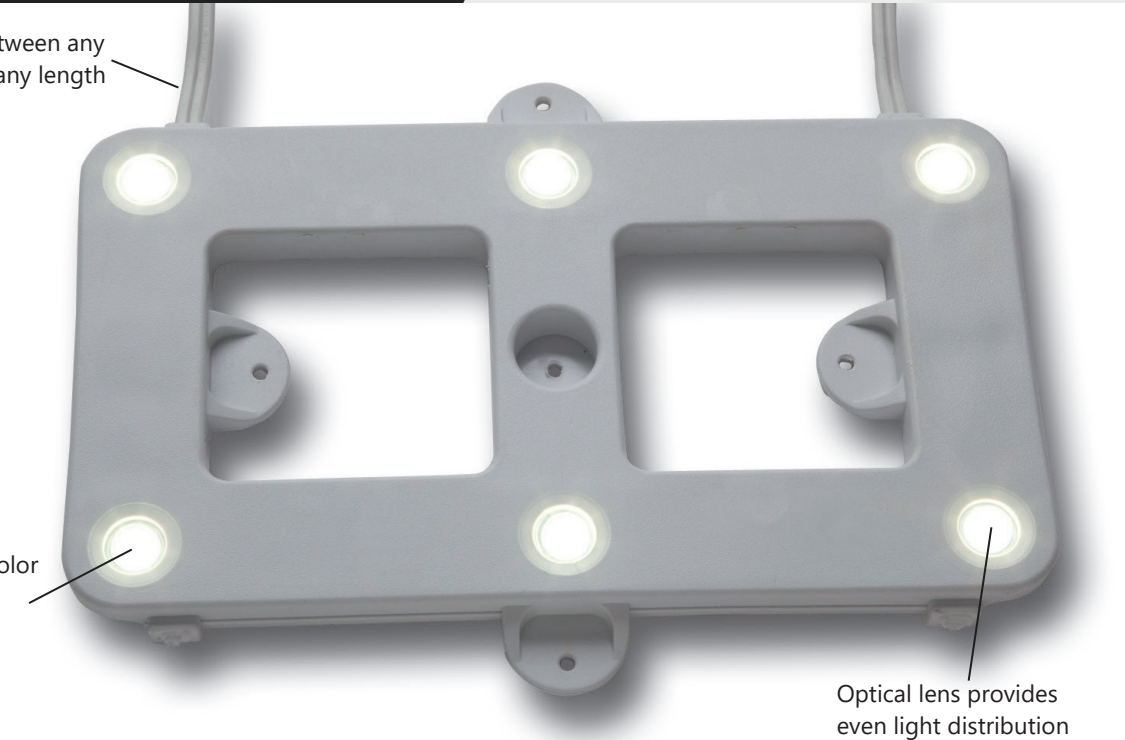
Date _____ Type _____

Notes _____

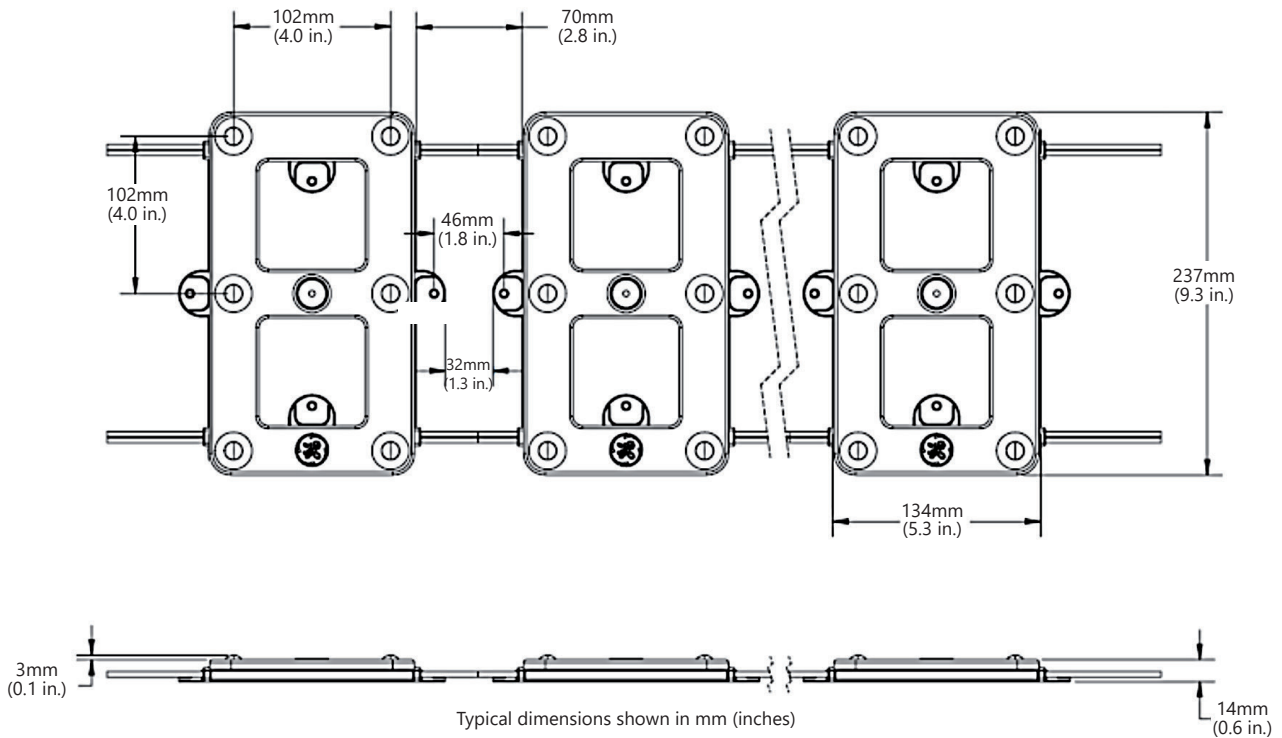
Can be cut between any module to fit any length

High quality color consistency

Optical lens provides even light distribution



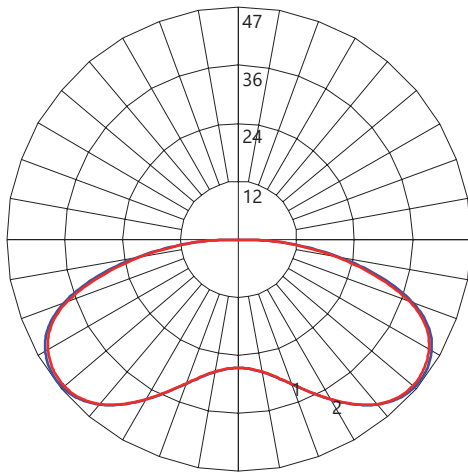
DIMENSIONAL DRAWINGS



Technical Specifications by SKU

PRODUCT CODE	DESCRIPTION CODE	CCT+/-	LENS	STRIP W/MODULE	SYSTEM W/MODULE	Lm/MODULE	LPW (SYSTEM)	Modules/Strip
93013528	GEWWPG3P6-27K-A	2700K +90/-40	155°	2.3 W	2.7 W	215	80	21
93013522	GEWWPG3P6-30K-A	3000K +115/-65	155°	2.3 W	2.7 W	220	81	21
93013523	GEWWPG3P6-35K-A	3500K +120 /-120	155°	2.3 W	2.7 W	225	83	21
93013524	GEWWPG3P6-40K-A	4000K +121 /-151	155°	2.3 W	2.7 W	230	85	21

Light Output



— Vertical plane through horizontal angle of maximum candlepower at 52°

— Vertical plane through horizontal angle of 30°

PRODUCT CODE	DESCRIPTION CODE	PRODUCT DESCRIPTION	QUANTITY
75514	9409	18 AWG Supply Wire (0.82 mm ²)	500 ft. (152.4 m)/PK
75545	19216004	18-14 AWG In-line Splice Connector (0.82-2.08 mm ²)	500/PK
75546	GEPGEC1	18 AWG Wire End Caps (0.33-0.82 mm ²)	100/PK
67824	GEPS24-100UGL-IP	LED Driver (24VDC/100W); Input Voltage: 108-305VAC; Damp Location Rated	1/PK
62189	GE180/MV/V24T1-C	LED Driver (24VDC/180W); Input Voltage: 90-305VAC; Damp Location Rated	1/PK
79045	GE080/MV/D24T1-A	00-10V Dimming LED Driver (24VDC/80W); Input Voltage: 90-305VAC; Damp Location Rated	1/PK

IES files can be downloaded at LED.com

Technical Specifications

Operating Voltage: 24VDC System

Environmental Rating: IP54, dry or damp location rated

Driver maximum loading:

79045 (GE080/MV/D24T1-A, 0-10V dimming)

- 30 modules

67825 (GEPS24-100UGL-IP) - 36 modules

62189 (GE180/MV/V24T1-C) - 33 modules

per bank/66 modules per LED Driver

Dimming: Dimmable with 0-10V Dimming LED Driver or Dimming Module with Current LED Driver and compatible dimming controller

Module Weight: 0.85lb (0.39kg)

Max remote mounting distance:

60W and 180W

30 ft. (9.14 m)

50 ft. (15.24 m)

80 ft. (24.38 m)

120 ft. (36.58 m)

Wire size: 18AWG (0.82 mm²)

Modules per ft: 2

Ambient Temperature: -40°C to +60°C

CRI: >=80

20W

120 ft. (36.6 m)

Supply Wire Gauge

18 AWG (0.82 mm²) supply wire

16 AWG (1.31 mm²) supply wire

14 AWG (2.08 mm²) supply wire

12 AWG (3.31 mm²) supply wire

System Certifications:

