

NOC-3.5R

NONI 3.5" ROUND CYLINDER FAMILY

DATE:	LOCATION:
TYPE:	PROJECT:
CATALOG #:	

FEATURES

- Downlight and Lensed Wall Wash
- Cast aluminum, magnetically-attached reflectors with applied finishes
- Interchangeable primary optics for Downlight
- Up to 2000 delivered lumens @ 80 CRI 3000K
- 90 CRI (27, 30, 35, 40K); 80 CRI (30, 35K)
- Dynamic white options (18–30K Dim-to-Warm, 27–65K Tunable White)



CONTROLS



SPECIFICATIONS

CONSTRUCTION

- Machined, extruded aluminum body with no visible hardware from below
- Downlight (DL) & Lensed Wall Wash (LW) functions feature reflectors and optics from recessed portfolio
- Surface mount (SU) ¼" Overlap flange fully covers junction box
- Cylinder assembly includes cylinder body & reflector insert, both matte finish. Insert attaches to collar via magnets. Can be mixed/matched as desired. Gasket centers insert and prevents light leak
- Canopy finish will match housing specification
- Conduit Canopy utilizes a patent pending mounting yoke to secure cylinder to the ceiling surface

OPTICS

- Static white fixtures feature low profile, high efficiency polycarbonate TIR primary optics for (DL) function
- All dynamic white fixtures feature optical grade silicone lens
- Optics installed and serviceable from below through housing aperture
- Media holder included standard. Accepts 1 reflector accessory. Matte black finish, reduces visual brightness at top of trim

ELECTRICAL

- Integral LED module and driver are field serviceable
- Chip-on-board LED. 2 SDCM CCT consistency for static white options. 3 SDCM consistency for Dynamic options
- Dim to Warm (2200K–3000K) or Tunable White (2700K–5000K or 2700K–6500K) options available
- Static White and Dim to Warm LED rated life L85 @ 55,000 hours (TM-21). Tunable White LED rated life L70 @ 50,000 hours (TM-21)
- Integral solid state constant current dimming driver. 1% and Dim-to-Dark options for 0–10V, ELV and TRIAC controls. NX control options available
- Drivers are UL Class 2, inherent short circuit and overload protection. RoHS compliant

INSTALLATION

- Available in Surface, Rigid Stem, Swivel Stem, and Cord/Cable mounting types
- Conduit Canopy options (CC, CY) allow field selectable conduit entry (up to 4@ 90°) to allow surface-mounted conduit to pass through luminaire
- Standard and custom pendant lengths available Rigid (PR) and Swivel (P) stems. ¼ NPS, schedule 40, 6063-T6 aluminum pipe

INSTALLATION (CONTINUED)

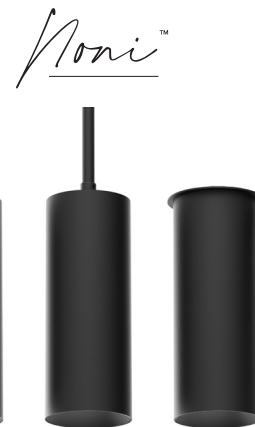
- Swivel stem (P) allows for sloped ceilings up to 35°
- Cord/Cable (CM) can be cut in field to custom length. 1/16" galvanized cable with 4 or 5 18AWG wires depending on configuration. Available with black or white jacket

CERTIFICATIONS

- cULus certified to UL 1598
- Suitable for damp locations
- Install in environments where ambient temperature does not exceed 25°C

WARRANTY

- 5 year warranty



KEY DATA	
Wattages	25, 17, 10
Beam Spreads	25, 30, 35, 50, 75
SDCM	2
Rated Life	L85 @ > 55,000 Hours

NOC-3.5R

NONI 3.5" ROUND CYLINDER FAMILY

DATE:	LOCATION:
TYPE:	PROJECT:
CATALOG #:	

ORDERING GUIDE

Examples: NOC-3.5RDL-CHNCSP17-930K-MD-DM1NU-BL / NOC-3.5RDL-TRM-RGT-SOL

CATALOG #	
-----------	--

HOUSING

NOC-3.5R		CHN							
Series	Function	Housing	Canopy	Mounting		Output		CRI/CCT	
NOC-3.5R	Noni Cylinder 3.5" Round	CHN Cylinder Housing	CS Standard	PR	Rigid Stem, Standard ¹	10	10 Watt	Static	
			CX Standard with controls	PR_	Rigid Stem, Custom ¹	17	17 Watt		
			CC Conduit	P	Swivel Stem, Standard ¹	25	25 Watt		
			CY Conduit with Controls	P_	Swivel Stem, Custom ¹				
				CMBL	6ft Black Cord with cable ²				
				CMWH	6ft White Cord with cable ²				
				CM15BL	15ft Black Cord with cable ²				
				CM15W	15ft White Cord with Cable ²				
				SU	Surface			Dynamic	
								1830DT	90 1800K–3000K Dim-to-Warm ^{3,4}
								2765T	90 CRI, 2700K–6500K SpectraSync™ Tunable White ^{3,4,5}

Beam Spread ⁶		Dimming		Controls		Voltage		Cylinder Housing Color	
VN	Very Narrow (.42 SC / 25°)	DM1	0–10V 1% ^{9,13}	N	None	U	Universal Voltage (120–277V)	Texture	
NR	Narrow (.50 SC / 30°)	PDM	ELV, TRIAC 1% ¹³	NXE	NX Dual RJ45 SmartPORTS, without Sensor ^{9,10}			WH	White
MD	Medium (.58 SC / 35°)	ERP	0–10V, ELV, TRIAC Dim-to-Dark	NXW	NX Networked Wireless Radio Module NXRM2 and Bluetooth Programming, without Sensor ^{9,10,14}			GY	Gray
WD	Wide (.80 SC / 50°)	PEQOE	Lutron Hi-Lume Premier 0.1% ⁹					BL	Black
XW	Extra Wide (1.06 SC / 75°) ⁷	SpectraSync						GT	Graphite
LW	Lensed Wall Wash ⁸	DMT	0–10V 5% ³					PP	Pink Panache
								GH	Grasshopper
								Smooth	
								WHS	White
								GYS	Gray
								BLS	Black
								COS	Copper
								AMW	Anti-Microbial White
								Other	
								X	Custom Finish

TRIM

NOC-3.5R		TRM		Reflector Insert Color		Lens	
Series	Function	Trim		Texture			
NOC-3.5R	Noni Cylinder 3.5" Round	TRM Trim	DL Downlight LW Lensed Wall Wash	RWH	White	SOL	Solite ¹¹
				RGY	Gray	CLR	Clear ¹¹
				RBL	Black	FRS	Frosted ¹²
				RGT	Graphite	LIN	Linear Spread (10 x 40°) ¹¹
				RPP	Pink Panache	HEX	Hexcel Louver ¹¹
				RGH	Grasshopper	NON	No Lens ¹¹
				Smooth			
				RWHS	White		
				RGYS	Gray		
				RBLs	Black		
				RCOS	Copper		
				RAMW	Anti-Microbial White		
				Other			
				RX	Custom Finish		

Notes:

- 1 Stem length varies by canopy configuration. See Dimensions section for details
- 2 Cable/Cord can be cut in the field to custom length
- 3 17W max
- 4 Available with NR or LW beam spread only
- 5 DMT driver must be selected for use with 2765T
- 6 DL Performance based on SOL lens with RWHS insert finish
- 7 Available only with FRS lens
- 8 Available only when LW function selected
- 9 DM1 or ERP required with NX options
- 10 Must specify CX or CY canopy
- 11 Available only with DL function
- 12 Available with all functions. Must be selected with LW
- 13 Available with 25 or 17 watt only
- 14 Not compatible with SU mounting

DATE:	LOCATION:
TYPE:	PROJECT:
CATALOG #:	

PERFORMANCE DATA

Performance data provided below based on 80 CRI, 3000K with White reflector and Solite lens. Extra Wide (XW) and Lensed Wall Wash (LW) performance includes White reflector and Frosted lens.

Output	Beam Spread	Beam	Delivered Lumens	Efficacy	Spacing Criterion	Candela @ 0°
25 Watt	Very Narrow (VN)	25	2033	81	0.42	8414
	Narrow (NR)	30	1964	79	0.50	6056
	Medium (MD)	35	1846	74	0.58	4200
	Wide (WD)	50	2021	81	0.80	2711
	Extra Wide (XW)	75	1598	64	1.06	1133
17 Watt	Very Narrow (VN)	25	1525	90	0.42	6312
	Narrow (NR)	30	1473	87	0.50	4543
	Medium (MD)	35	1385	81	0.58	3151
	Wide (WD)	50	1516	89	0.80	2034
	Extra Wide (XW)	75	1198	70	1.06	850
10 Watt	Very Narrow (VN)	25	951	96	0.42	3927
	Narrow (NR)	30	918	92	0.50	2826
	Medium (MD)	35	863	87	0.58	1960
	Wide (WD)	50	945	95	0.80	1265
	Extra Wide (XW)	75	747	75	1.06	529

Output		Delivered Lumens	Efficacy	Max Candela
25 Watt	Wall Wash (LW)	1280	51	773
17 Watt	Wall Wash (LW)	967	56	588
10 Watt	Wall Wash (LW)	600	59	364

NOC-3.5R

NONI 3.5" ROUND CYLINDER FAMILY

DATE:

LOCATION:

TYPE:

PROJECT:

CATALOG #:

MULTIPLIER TABLE

CRI, CCT	927		930		940		830		835		1830TD		2765T	
	0.83		0.86		0.87		1.0		1.02		0.46		0.55*	
Media	SOL		CLR		LIN		HEX		FRS		NON		*Multiplier value based on 4600K.	
	1.0		1.02		0.95		0.76		0.78		1.12			
Output	10 Watt		17 Watt		25 Watt									
	0.47		0.76		1.0									
Finishes	RWH	RGY	RBL	RGT	RPP	RGH	RWHS	RGYS	RGBLS	RCOS	RAMW			
	1.0	0.9	0.85	0.85	0.8	0.8	1.02	0.95	0.9	0.8	1.05			

ELECTRICAL DATA

	DM1	PDM	ERP	PEQ0E
Dimming Protocols Supported	0–10V	ELV, TRIAC	0–10V, ELV, TRIAC	Lutron Hi-Lume Premier 0.1%
Input Voltage	120–277V	120–277V	120–277V	120–277V
Input Frequency	50/60 Hz	50/60 Hz	50/60 Hz	50/60 Hz
Dim Level	<1%	1%	1% Dim-to-Dark	0.1% Dim-to-Dark
Power Factor (PF)	≥0.90	≥0.90	≥0.90	0.95 Typical
Total Harmonic Distortion (THD)	<20%	<20%	<20%	15% Typical
Inrush Current	NEMA 410 Limit	NEMA 410 Limit	NEMA 410 Limit	NEMA 410 Limit
Electromagnetic Interference (EMI) Filtering	FCC CFR Title 47 Part 15 Class B	FCC CFR Title 47 Part 15 Class B	FCC CFR Title 47 Part 15 Class B at 120Vac, Class A at 277Vac	Contact Lutron
Transient Surge Protection	IEEE C62.411-2002 & C62.412-2002 Category A	IEEE C62.411-2002 & C62.412-2002 Category A	IEEE C62.411-2002 & C62.412-2002 Category A	Contact Lutron

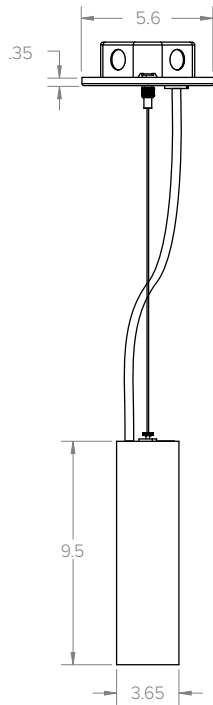
NOC-3.5R

NONI 3.5" ROUND CYLINDER FAMILY

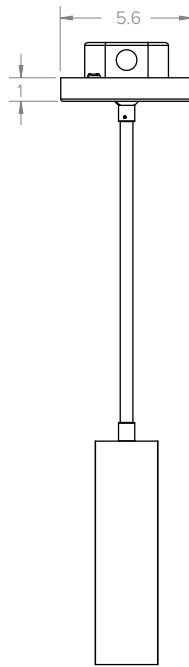
DATE:	LOCATION:
TYPE:	PROJECT:
CATALOG #:	

DIMENSIONS

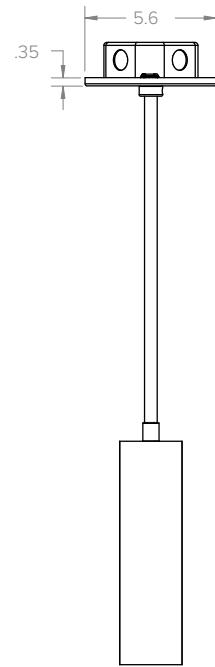
**Cord/Cable
(CM)**



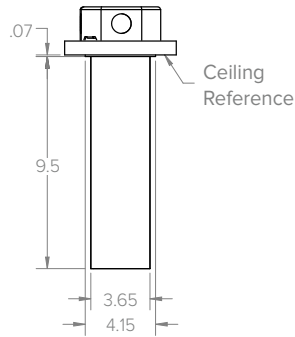
**Swivel Stem
(P)**



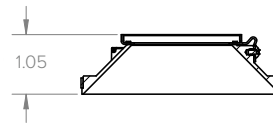
**Rigid Stem
(PR)**



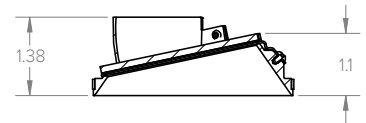
**Surface Mount
(SU)**



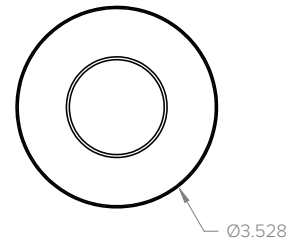
**Downlight
(DL)**



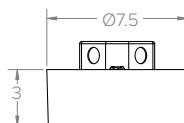
**Wall Wash
(LW)**



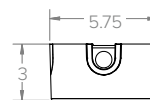
**Reflector
Insert**



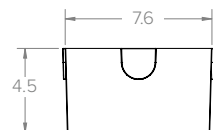
**Standard w/ Controls
(CX)**



**Conduit
(CC)**



**Conduit w/ Controls
(CY)**



**Additional
Canopy Options**