

NOR-1.5R

NONI 1.5" ROUND RECESSED FAMILY

DATE:	LOCATION:
TYPE:	PROJECT:
CATALOG #:	

FEATURES

- Downlight and Lensed Wall Wash
- ¼" overlap microflange and flush mount trims
- Cast aluminum, magnetically-attached reflectors with applied finishes
- TIR primary optics with various beam options
- Remodeler IC applications
- Up to 685 delivered lumens @ 80 CRI 3000K
- 90 CRI (27, 30, 35, 40K); 80 CRI (30, 35K)

Noni™

**SPECIFICATIONS****CONSTRUCTION**

- Machined, die cast aluminum housing, finished matte black. Remodeler IC (**RHI**) inherently protected for direct contact with insulation installation
- Stainless steel leaf spring design provides grip range ⅝" to 1 ¼"
- Cast aluminum Downlight (**DL**) & Lensed Wall Wash (**LW**) reflector inserts available. Gasket centers insert
- Housing attaches to remote driver enclosure with low voltage quick connects
- Optional Mounting Pan (**MP1.5RMB**) features CorrectCut. A rolled sheet metal edge which serves as a cutting guide for installers. Provides fixed cutout outer diameter which ensures reliable flange coverage and clean, finished appearance. *KV-exclusive*

TRIM CONSTRUCTION

- Cast aluminum reflector insert, matte finish. Can be mixed/matched with flange finish as desired. Insert attaches to collar via magnets. Gasket centers insert and prevents light leak
- ¼" overlap flange. Thickness measures .046"
- Flangeless (**FT**) mud-in ring is low profile, die-cast featuring an edge to plaster up to. Ring attaches to ceiling and comes with removable protective plug installed at factory

OPTICS

- Low profile, high efficiency polycarbonate TIR primary optics for (**DL**) function
- Media holder included standard. Accepts 1 reflector accessory. Matte black finish, reduces visual brightness at top of trim

ELECTRICAL

- Integral LED module and driver are serviceable from below through housing aperture
- Chip-on-board LED. 2 SDCM CCT consistency
- LED rated life L70 at >55,000 hours (TM-21)
- Solid state constant current dimming driver. 2% options for 0–10V, ELV and TRIAC controls
- Drivers are UL Class 2, inherent short circuit and overload protection. RoHS compliant

CERTIFICATIONS

- cULus certified to UL 1598
- Suitable for wet locations
- Install in environment where ambient temperature does not exceed 25°C

WARRANTY

- 5 year warranty

KEY DATA	
Wattages	8
Beam Spreads	20, 25, 35, 45, 70
SDCM	2
Rated Life	L70 @ > 55,000 Hours

NOR-1.5R

NONI 1.5" ROUND RECESSED FAMILY

DATE:	LOCATION:
TYPE:	PROJECT:
CATALOG #:	

ORDERING GUIDE

Examples: NOR-1.5RDL-RHI8-930K-MD-DM1NU-FWHS-SOL / NOR-1.5RDS-TRM-RBL

CATALOG #	
-----------	--

HOUSING

NOR-1.5R		RHI		CRI/CCT		Beam Spread ¹			
Series	Function	Housing	Output						
NOR-1.5R	Noni Recessed 1.5" Round	DL Downlight LW Lensed Wall Wash	RHI Remodeler Housing, IC	8	8 Watt	927K	90 CRI, 2700K	VN	Very Narrow (.36 SC / 20°)
	930K					90 CRI, 3000K	NR	Narrow (.42 SC / 25°)	
						935K		90 CRI, 3500K	MD
						940K	90 CRI, 4000K	WD	
						830K	80 CRI, 3000K		XW
						835K	80 CRI, 3500K	LW	

		N			U										
Dimming		Controls		Voltage				Reflector Flange Color		Downlight Lens ⁴		Accessories			
DM1	0–10V 2%	N	None	U	Universal Voltage (120–277V)			Flanged		SOL	Solite	MP1.5	Mounting Pan		
PDM	ELV, TRIAC 2%							WHS White		CLR	Clear				
								GYS Gray		FRS	Frosted				
								BLS Black		LIN	Linear Spread (10 x 40°)				
								COS Copper		HEX	Hexcel Louver				
								AMW Anti-Microbial White		NON	No Lens				
								Flush Mount							
								FT Flush Mount							

NOR-1.5R

NONI 1.5" ROUND RECESSED FAMILY

DATE:	LOCATION:
TYPE:	PROJECT:
CATALOG #:	

PERFORMANCE DATA

Performance data provided below based on 80 CRI, 3000K with White reflector and Solite lens. Extra Wide (XW) and Lensed Wall Wash (LW) performance includes White reflector and Frosted lens.

Output	Beam Spread	Beam	Delivered Lumens	Efficacy	Spacing Criterion	Candela @ 0°
8 Watt	Very Narrow (VN)	20	665	86	0.36	3430
	Narrow (NR)	25	659	86	0.42	2566
	Medium (MD)	35	614	80	0.56	1468
	Wide (WD)	45	685	89	0.76	1023
	Extra Wide (XW)	70	484	63	1.00	390

Output		Delivered Lumens	Efficacy	Max Candela
8 Watt	Wall Wash (LW)	288	37	211

MULTIPLIER TABLE

CRI, CCT	927	930	935	940	830	835
	0.83	0.86	0.87	0.87	1.0	1.02

Media	SOL	CLR	LIN	HEX	FRS	NON
	1.0	1.02	0.91	0.71	0.73	1.12

Output	8 Watt
	1.0

Finishes	RWH	RGY	RBL	RGT	RPP	RGH	RWHS	RGYS	RGBLS	RCOS	RAMW
	1.0	0.9	0.85	0.85	0.8	0.8	1.02	0.95	0.9	0.8	1.05

ELECTRICAL DATA

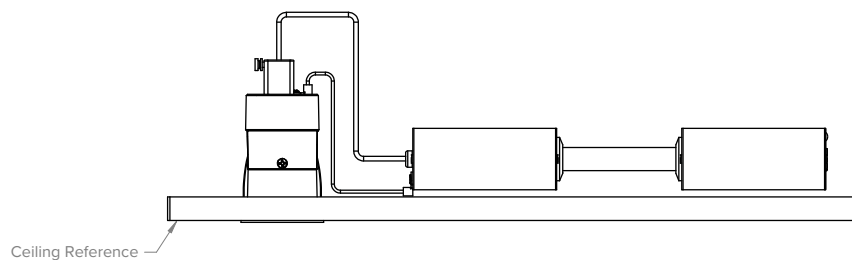
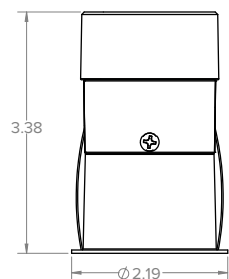
	DM1	PDM
Dimming Protocols Supported	0–10V	ELV, TRIAC
Input Voltage	120–277V	120–277V
Input Frequency	50/60 Hz	50/60 Hz
Dim Level	0.02	0.02
Power Factor (PF)	≥0.90	≥0.90
Total Harmonic Distortion (THD)	≤20%	≤20%
Inrush Current	NEMA 410 Limit	NEMA 410 Limit
Electromagnetic Interference (EMI) Filtering	FCC CFR Title 47 Part 15 Class B	FCC CFR Title 47 Part 15 Class B
Transient Surge Protection	IEEE C62.41.1-2002 & C62.41.2-2002 Category A	IEEE C62.41.1-2002 & C62.41.2-2002 Category A

NOR-1.5R

NONI 1.5" ROUND RECESSED FAMILY

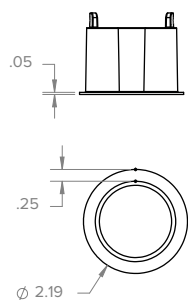
DIMENSIONS

DATE:	LOCATION:
TYPE:	PROJECT:
CATALOG #:	

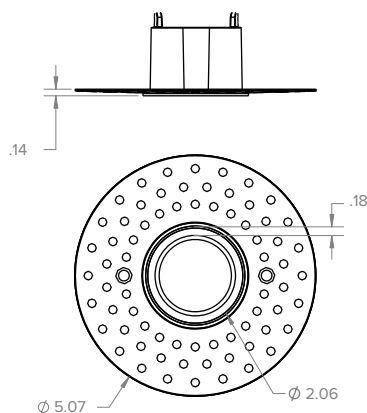


Housing

Flange

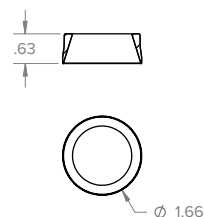


Flush Mount (FT)

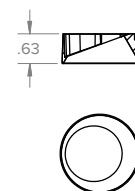


Reflector Collar

Downlight (DS)

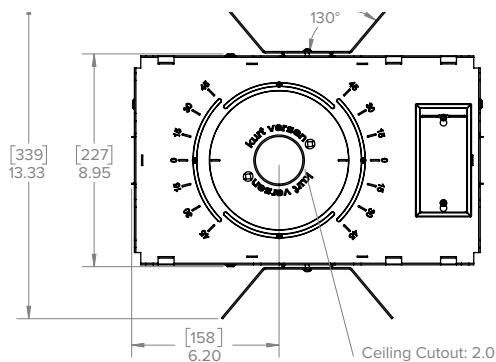


Wallwash (LW)

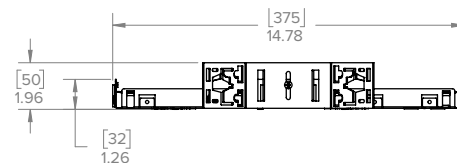


Reflector Insert

Bottom View



Side View



Mounting Pan Accessory (Optional)