

# NOR-2.5S

NONI 2.5" SQUARE RECESSED FAMILY

DATE:	LOCATION:
TYPE:	PROJECT:
CATALOG #:	

## FEATURES

- Downlight (two styles), Lensed Wall Wash (two styles), Adjustable Accent
- ¼" overlap microflange and flush mount trims featuring CorrectCut
- Cast aluminum, magnetically-attached reflectors with applied finishes
- Interchangeable primary optics for Downlight and Adjustable Accent
- Proprietary Square in Square (SS) option available
- New Construction Non-IC, IC & Chicago Plenum applications
- Up to 1900 delivered lumens @ 80 CRI 3000K
- 90 CRI (27, 30, 35, 40K); 80 CRI (30, 35K)

Noni™



## CONTROLS



## SPECIFICATIONS

### HOUSING CONSTRUCTION

- Formed 22GA steel housing, finished matte black. New Construction (NHN) housing thermally protected. Insulation must be 3" away from housing. New Construction IC (NHI) inherently protected for direct contact with insulation installation
- Lockable housing ceiling pan rotates 45° independent of housing position
- Removable cover plates on housing side and bottom for j-box inspection
- Downlight (DL) & Shallow Lensed Wall Wash (LWS) feature ultra shallow 2" deep housing. Integral j-box has (4) ⅝" knock-outs
- Adjustable Accent (AA) & Deep Lensed Wall Wash (LWD) utilize 3⅝" deep housing. Integral j-box has (6) ⅝" knock outs
- Universal adjustable mounting brackets accept 0.5" EMT conduit or 1.5" or 0.75" lathing channel (by others)
- Optional Residential Mounting Bars (RMB) extend from 16–24"
- CorrectCut design is a rolled sheet metal edge which serves as a cutting guide for installers. Provides fixed cutout outer diameter which ensures reliable flange coverage and clean, finished appearance. KV-exclusive
- LED protection plate pre-installed from factory
- Control options require above ceiling access

### TRIM CONSTRUCTION

- Reflector assembly includes reflector collar & reflector insert. Both cast aluminum, matte finish. Can be mixed/matched as desired. Insert attaches to collar via magnets. Gasket centers insert and prevents light leak
- ¼" overlap flange. Thickness measures .047"
- Ceiling thickness range ⅝"- 1¼". Two Downlight trim ceiling thickness options available: Shallow (DS) optimized for ⅝" ceiling (compatible up to & including 1⅝"). Deep (DD) optimized for 1¼" ceiling (compatible with 1¼" only)
- Flush Mount (FT) mud-in ring is low profile, die-cast featuring an edge to plaster up to. Ring attaches to ceiling and comes with removable protective plug installed at factory

### OPTICS

- Low profile, high efficiency polycarbonate TIR primary optics for (DL) and (AA) functions
- Square in Square (SS) optic option available
- Optics installed and serviceable from below through housing aperture
- Media holder included standard. Accepts 1 reflector accessory. Matte black finish, reduces visual brightness at top of trim
- Adjustable Accent (AA) lockable hot-aim 0°–40° vertical tilt, 362° horizontal rotation. Features translating center beam at finished ceiling plane (⅝")
- Two wall wash options, both optimized for 18" spacing off-wall with 2:1 spacing. LWD optic provides industry-leading horizontal uniformity near top-of-wall. LWS optic provides excellent vertical uniformity in ultra shallow housing

### ELECTRICAL

- Integral LED module and driver are field serviceable from below through housing aperture
- Chip-on-board LED. 2 SDCM CCT consistency for static white options. 3 SDCM consistency for Dynamic options
- LED rated life L85 @ 55,000 hours (TM-21)
- Integral solid state constant current dimming driver. 1% and Dim-to-Dark options for 0–10V, ELV and TRIAC controls. NX or Lutron Vive control options available
- Drivers are UL Class 2, inherent short circuit and overload protection. RoHS compliant

### CERTIFICATIONS

- cULus certified to UL 1598
- Suitable for wet locations
- Hexcel Louver (HEX) and No Lens (NON) suitable for damp locations.
- City of Chicago Environmental Air (CCEA / CP)
- Install in environments where ambient temperature does not exceed 25°C

### WARRANTY

- 5 year warranty

KEY DATA	
Wattages	25, 17, 10
Beam Spreads	25, 30, 35, 55, 75
SDCM	2
Rated Life	L85 @ > 55,000 Hours

# NOR-2.5S

NONI 2.5" SQUARE RECESSED FAMILY

DATE:	LOCATION:
TYPE:	PROJECT:
CATALOG #:	

## ORDERING GUIDE

Examples: NOR-2.5SDL-NHN17-930K-MD-DM1NU / NOR-2.5SDS-TRM-FWHS-RBL-SOL

CATALOG #	
-----------	--

### HOUSING

NOR-2.5S							
Series	Function	Housing	Output	CRI/CCT		Beam Spread <sup>5</sup>	
NOR-2.5S Noni Recessed 2.5" Square	<b>Shallow Housing (2" Depth)</b>	<b>NHN</b> New Construction, Non-IC	<b>10</b> 10 Watt	<b>927K</b>	90 CRI, 2700K	<b>VN</b>	Very Narrow (.46 SC / 25°)
	<b>DL</b> Downlight	<b>NHI</b> New Construction, IC <sup>1</sup>	<b>17</b> 17 Watt	<b>930K</b>	90 CRI, 3000K	<b>NR</b>	Narrow (.50 SC / 30°)
	<b>LWS</b> Lensed Wall Wash, Shallow	<b>CP</b> Chicago Plenum <sup>1</sup>	<b>25</b> 25 Watt	<b>935K</b>	90 CRI, 3500K	<b>MD</b>	Medium (.60 SC / 35°)
	<b>Shallow Housing (3" Depth)</b>			<b>940K</b>	90 CRI, 4000K	<b>WD</b>	Wide (.84 SC / 55°)
	<b>LWD</b> Lensed Wall Wash, Deep			<b>830K</b>	80 CRI, 3000K	<b>SS</b>	Square in Square (1.22 SC / 75°)
	<b>AA</b> Adjustable Accent			<b>835K</b>	80 CRI, 3500K	<b>LW</b>	Lensed Wall Wash <sup>7</sup>

		U	
Dimming	Controls <sup>13</sup>	Voltage	Accessories
<b>DM1</b> 0–10V 1% <sup>8, 14, 15</sup>	<b>N</b> None	<b>U</b> Universal Voltage (120–277V)	<b>RMB</b> Residential Mounting Bars
<b>PDM</b> ELV, TRIAC 1% <sup>8, 14</sup>	<b>LV</b> Lutron Vive 0–10V (120–277V)		
<b>ERP</b> 0–10V, ELV, TRIAC Dim-to-Dark <sup>8, 15</sup>	<b>NXE</b> NX Dual RJ45 SmartPORTS, without Sensor <sup>15</sup>		
	<b>NXW</b> NX Networked Wireless Radio Module NXRM2 and Bluetooth Programming, without Sensor <sup>15</sup>		

### TRIM

NOR-2.5S		TRM			
Series	Function	Trim	Reflector Flange Color	Reflector Insert Color	Lens
NOR-2.5S Noni Recessed 2.5" Square	<b>Shallow Housing Compatible</b>	TRM Trim	<b>Flanged</b>	<b>Texture</b>	<b>SOL</b> Solite <sup>9</sup>
	<b>DS</b> Downlight, Shallow (5/8"–1 1/8" ceiling)		<b>FWHS</b> White	<b>RWH</b> White	<b>CLR</b> Clear <sup>9</sup>
	<b>DD</b> Downlight, Deep (1 1/4" ceiling only)		<b>FGYS</b> Gray	<b>RGY</b> Gray	<b>FRS</b> Frosted <sup>10</sup>
	<b>LWS</b> Lensed Wall Wash, Shallow		<b>FBLS</b> Black	<b>RBL</b> Black	<b>LIN</b> Linear Spread (10 x 40°) <sup>9, 11</sup>
	<b>Deep Housing Compatible</b>		<b>FCOS</b> Copper	<b>RGT</b> Graphite	<b>HEX</b> Hexcel Louver <sup>9, 12</sup>
	<b>LWD</b> Lensed Wall Wash, Deep		<b>FAMW</b> Anti-Microbial White	<b>RPP</b> Pink Panache	<b>NON</b> No Lens <sup>9, 11</sup>
	<b>AA</b> Adjustable Accent		<b>FX</b> Custom Finish	<b>RGH</b> Grasshopper	
			<b>Flush Mount</b>	<b>Smooth</b>	
			<b>FT</b> Flush Mount	<b>RWHS</b> White	
				<b>RGYS</b> Gray	
				<b>RBLS</b> Black	
				<b>RCOS</b> Copper	
				<b>RAMW</b> Anti-Microbial White	
				<b>Other</b>	
				<b>RX</b> Custom Finish	

- Notes:
- Available in 10 or 17 watt outputs
  - DL performance based on SOL lens with RWHS insert finish
  - Available only with FRS lens
  - Available only when LW functions selected
  - Not available with LVE control
  - Available only with DL and AA functions
  - Available with all functions. Must be selected with LWS and LWD
  - Available with DS only
  - HEX and NON suitable for damp location only
  - Above ceiling access required
  - Only available in 17 or 25 watt outputs
  - DM1 or ERP required with NX options

# NOR-2.5S

NONI 2.5" SQUARE RECESSED FAMILY

DATE:	LOCATION:
TYPE:	PROJECT:
CATALOG #:	

## PERFORMANCE DATA

Performance data provided below based on 80 CRI, 3000K with White reflector and Solite lens. Extra Wide (XW) and Lensed Wall Wash (LWS, LWD) performance includes White reflector and Frosted lens.

Output	Beam Spread	Beam	Delivered Lumens	Efficacy	Spacing Criterion	Candela @ 0°
25 Watt	Very Narrow (VN)	25x25	1901	75	0.46	6066
	Narrow (NR)	30x30	1895	75	0.50	5228
	Medium (MD)	35x35	1776	70	0.60	3526
	Wide (WD)	55x55	1891	75	0.84	2220
	Square in Square (SS)	75X75	847	33	1.22	501
17 Watt	Very Narrow (VN)	25x25	1435	83	0.46	4580
	Narrow (NR)	30x30	1431	83	0.50	3947
	Medium (MD)	35x35	1341	78	0.60	2662
	Wide (WD)	55x55	1427	83	0.84	1676
	Square in Square (SS)	75X75	640	37	1.22	378
10 Watt	Very Narrow (VN)	25x25	892	87	0.46	2845
	Narrow (NR)	30x30	889	87	0.50	2452
	Medium (MD)	35x35	833	82	0.60	1653
	Wide (WD)	55x55	887	87	0.84	1041
	Square in Square (SS)	75X75	397	39	1.22	235

Output		Delivered Lumens	Efficacy	Max Candela
25 Watt	Wall Wash, Shallow (LWS)	584	23	302
	Wall Wash, Deep (LWD)	956	38	942
17 Watt	Wall Wash, Shallow (LWS)	441	25	230
	Wall Wash, Deep (LWD)	722	42	716
10 Watt	Wall Wash, Shallow (LWS)	274	27	142
	Wall Wash, Deep (LWD)	448	44	444

# NOR-2.5S

NONI 2.5" SQUARE RECESSED FAMILY

DATE:	LOCATION:
TYPE:	PROJECT:
CATALOG #:	

## MULTIPLIER TABLE

CRI, CCT	927		930		935		940		830		835	
	0.83		0.86		0.87		0.87		1.0		1.02	
Media	SOL		CLR		LIN		HEX		FRS		NON	
	1.0		1.02		0.91		0.71		0.73		1.12	
Output	10 Watt		17 Watt		25 Watt							
	0.47		0.76		1.0							
Finishes	RWH	RGY	RBL	RGT	RPP	RGH	RWHS	RGYS	RGBLS	RCOS	RAMW	
	1.0	0.9	0.85	0.85	0.8	0.8	1.02	0.95	0.9	0.8	1.05	

## ELECTRICAL DATA

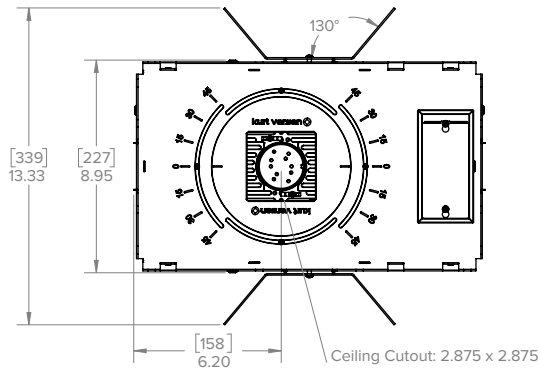
	DM1	PDM	ERP
Dimming Protocols Supported	0–10V	ELV, TRIAC	0–10V, ELV, TRIAC
Input Voltage	120–277V	120–277V	120–277V
Input Frequency	50/60 Hz	50/60 Hz	50/60 Hz
Dim Level	20W <1% 17W <5%	1%	1% Dim-to-Dark
Power Factor (PF)	≥0.90	≥0.90	≥0.90
Total Harmonic Distortion (THD)	<20%	<20%	<20%
Inrush Current	NEMA 410 Limit	NEMA 410 Limit	NEMA 410 Limit
Electromagnetic Interference (EMI) Filtering	FCC CFR Title 47 Part 15 Class B	FCC CFR Title 47 Part 15 Class B	FCC CFR Title 47 Part 15 Class B at 120Vac, Class A at 277Vac
Transient Surge Protection	IEEE C62.411-2002 & C62.412-2002 Category A	IEEE C62.411-2002 & C62.412-2002 Category A	IEEE C62.411-2002 & C62.412-2002 Category A

# NOR-2.5S

NONI 2.5" SQUARE RECESSED FAMILY

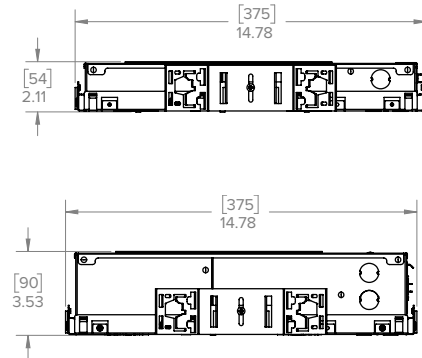
DATE:	LOCATION:
TYPE:	PROJECT:
CATALOG #:	

## DIMENSIONS

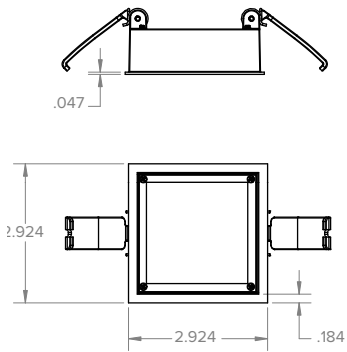


Housing

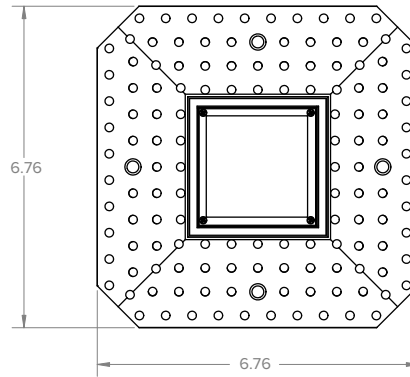
## Shallow Housing (DL, LWS)



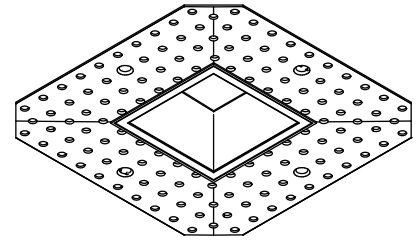
## Flange



## Flush Mount (FT)

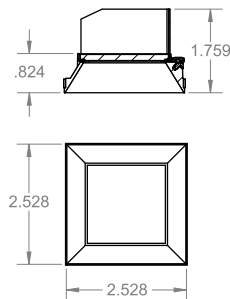


## Flush Mount (FT) with Downlight, Shallow (DS)

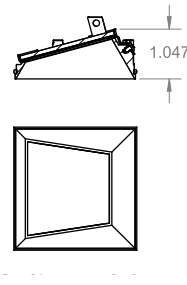


## Reflector Collar

## Lensed Wall Wash Deep (LWD)



## Adjustable (AA)



## Reflector Insert