

Bend

3" PENDANT OR SURFACE
DIRECT OR INDIRECT/DIRECT

FEATURES

- Variable Intensity technology provides a range of specifiable outputs and resulting fixture wattages
- 1050 lumens max direct; 1300 lumens max indirect.. See performance data table for additional information.



bend



RELATED PRODUCTS

88L-PS-4

88L-R-3

88L-R-4

SPECIFICATIONS

Due to the complexity of this specification, submittal drawings for any configuration are required. Some configurations may require remote mounting drivers.

CONSTRUCTION

- 2.9" x 4.8" profile with 1.9" aperture (nominal).
- Extruded aluminum housing with machined aluminum end headers
- Machined aluminum end caps mechanically attached with no exposed fasteners
- Extruded semi-rigid lens retention rail. Lens rail will match standard housing finish specified.

OPTICS

- 3 SDCM CCT consistency, 80 CRI.
- White Opal (WOL) diffuse acrylic downlight diffuser
- Optional White Opal (WOL) or Clear (L1) acrylic indirect diffuser

ELECTRICAL

- Variable Intensity (VI) technology allows precise specification of fixture output/wattage. Fixture will be programmed and labeled to specification.
- LED boards and solid state constant current driver are field-servicable.
- LED rated life L85 > 50,000 hours. Tested in accordance to LM79-2008 & rated life derived from EPA TM-21 calculator.
- 1C (1 Circuit) Fixture wired for a single circuit
- 2C (2 Circuit) Uplight and downlight switched/dimmed separately. Two power feeds required.
- 10W battery powered driver. Provides a minimum of 90 minutes of emergency lighting. Available in straight fixtures greater than 3' in length.
- Inverter-Compatible. Provided by others.

INSTALLATION

- Fixture weight: 4 lbs/ft
- Suspension required at every row joint. 3/32" diameter field adjustable cables
- Non-feed canopy covers 2" diameter (unless 5" non-feed cover specified).
- Surface mount available as direct distribution only

CERTIFICATIONS

- ETL listed for damp locations
- IBEW
- AF of L

WARRANTY

- LED boards - 5 years
- LED drivers (standard) - 5 years

KEY DATA	
Lumen Range	I: 450 - 1300 D: 350 - 1050
SDCM	3
Rated Life	L85 > 50,000 Hours
Efficacy	67 - 95

Bend

3" PENDANT OR SURFACE
DIRECT OR INDIRECT/DIRECT

ORDERING GUIDE

Example: 88L-P-ID-3-STD-16-08-WOL-C1-35K-I060-D080-D01-2C-UNV-FA1-L1

CATALOG #

88L – Straight Sections								
Series	Mounting	Distribution	Aperture	Uplight Distribution	Row Length (In Feet)	Max Length in Row	Direct Diffuser	
88L Bend	P Pendant S Surface ¹	D Direct ID Indirect/Direct	3 3"	STD Standard	' _____ Enter in foot increments	02 2', 609mm 03 3', 914mm 04 4', 1219mm 05 5', 1524mm 06 6', 1828mm 08 8', 2438mm	WOL White Opal Diffuse Lens, Lambertian	

Finish/Color	CCT/CRI	Indirect Output/Ft ²	Direct Output/Ft ³	Driver	Circuiting	Voltage
C1 Matte White (Default)	30K 3000K, 80CRI	I045 450 (Min) to	D035 350 (Min) to	D01 1% Dimming, 0-10V	1C 1 Circuit 2C 2 Circuit - Uplight/Downlight	UNV 120-277V
C4 Machined Aluminum	35K 3500K, 80CRI	I130 1300 (Max)	D105 1050 (Max)			
C5 Carbon Black	40K 4000K, 80CRI					
CC Custom Color						

OPTIONAL

Mounting Kit ⁸	Nightlight	Emergency	Thru-Wiring	Uplight Diffuser
FA1 Suspension Kit, 51" FA2 Suspension Kit, 87" FA3 Suspension Kit, 219"	NL Nightlight Circuit Required ⁴	EF 10W Emergency Battery Backup ⁵	W1 No Thru-Wire W2 Provide Normal and NL/EF Thru-Wiring ⁶ W3 Provide Normal Thru-Wiring Only	WOL White Opal Diffuse Lens L1 Clear Acrylic Dust Cover

Notes:

- ¹ For surface mount, Mounting Kit specification not required.
- ² Specifiable in 50 lumen increments. Reference the Performance Data Table for full performance offering and exceptions.
- ³ Specifiable in 50 lumen increments. Reference the Performance Data Table for full performance offering and exceptions.
- ⁴ Enter Quantity. 2NL= 2 Nightlight circuits per row.
- ⁵ Enter Quantity. 2EF= 2 Batteries per row. 10W battery powered driver. Provides a minimum of 90 minutes of emergency lighting. Inverter Compatible. Provided by others.
- ⁶ Only applicable when specified with Emergency/Nightlight
- ⁷ Contact Factory for pattern configurations. Additional lead time may be applicable Approval drawings required.
- ⁸ Add suffix /V to replace all 2" non-feed canopy covers with 5" canopy covers. FA1/V = 51" suspension kit w/ 5" canopies; canopies and feed cord are supplied in white regardless of fixture color unless otherwise specified.

DATE: _____ LOCATION: _____

TYPE: _____ PROJECT: _____

CATALOG #: _____

Bend

3" PENDANT OR SURFACE
DIRECT OR INDIRECT/DIRECT
ORDERING GUIDE

Example: 88L-P-ID-3-STD-4A4/90-WOL-C1-35K-I060-D080-D01-2C-UNV-FA1-L1

CATALOG #

88L – Curved sections						
Series	Mounting	Distribution	Aperture	Uplight Distribution	Arc	Direct Diffuser
88L Bend	P Pendant S Surface ¹	D Direct ID Indirect/Direct	3 3"	STD Standard	A2/90 2' Diameter, 90° Arc A2/180 2' Diameter, 180° Arc A4/45 4' Diameter, 45° Arc A4/90 4' Diameter, 90° Arc A4/180 4' Diameter, 180° Arc A6/90 6' Diameter, 90° Arc A8/45 8' Diameter, 45° Arc A8/90 8' Diameter, 90° Arc A12/45 12' Diameter, 45° Arc A16/45 16' Diameter, 45° Arc A20/30 20' Diameter, 30° Arc Enter Quantity. 2A2/180 = 2x 2', 180° Arcs	WOL White Opal Diffuse Lens, Lambertian

Finish/Color	CCT/CRI	Indirect Output/Ft ²	Direct Output/Ft ³	Driver	Circuiting	Voltage
C1 Matte White (Default)	30K 3000K, 80CRI	I045 450 (Min) to	D035 350 (Min) to	D01 1% Dimming, 0-10V	1C 1 Circuit	UNV 120-277V
C4 Machined Aluminum	35K 3500K, 80CRI	I130 1300 (Max)	D105 1050 (Max)		2C 2 Circuit - Uplight/ Downlight	
C5 Carbon Black	40K 4000K, 80CRI					
CC Custom Color						

OPTIONAL

Mounting Kit	Nightlight	Thru-Wiring	Uplight Diffuser
FA1 Suspension Kit, 51"	NL Nightlight Circuit Required ⁴	W1 No Thru-Wire W2 Provide Normal and NL/ EF Thru-Wiring ⁵ W3 Provide Normal Thru-Wiring Only	WOL White Opal Diffuse Lens L1 Clear Acrylic Dust Cover
FA2 Suspension Kit, 87"			
FA3 Suspension Kit, 219"			

Notes:

- ¹ For surface mount, Mounting Kit specification not required.
- ² Specifiable in 50 lumen increments. Reference the Performance Data Table for full performance offering and exceptions.
- ³ Specifiable in 50 lumen increments. Reference the Performance Data Table for full performance offering and exceptions.
- ⁴ Enter Quantity. 2NL= 2 Nightlight circuits per row.
- ⁵ Only applicable when specified with Emergency/Nightlight

Bend

3" PENDANT OR SURFACE
DIRECT OR INDIRECT/DIRECT

PERFORMANCE DATA TABLE

The table below shows the delivered lumens for the various lumen outputs. Use this chart in connection with the output multiplier capability to deliver any output required

Nomenclature	Lumens/Ft	W/Ft	Efficacy
Direct			
D035	350	4.6	76
D040	400	5.3	75
D045	450	6.0	75
D050	500	6.7	75
D055	550	7.5	73
D060	600	8.2	73
D065	650	9.0	72
D070	700	9.8	71
D075	750	10.6	71
D080	800	11.4	70
D085	850	12.2	70
D090	900	13.0	69
D095	950	13.9	68
D100	1000	14.8	68
D105 (MAX)	1050	15.7	67
Indirect			
I045	450	4.1	109
I050	500	4.7	107
I055	550	5.1	108
I060	600	5.5	109
I065	650	6.1	107
I070	700	6.5	108
I075	750	7.0	107
I080	800	7.6	106
I085	850	8.1	105
I090	900	8.7	104
I095	950	9.2	103
I100	1000	9.6	104
I105	1050	10.2	103
I110	1100	10.7	103
I115	1150	11.3	102
I120	1200	11.9	101
I125	1250	12.5	100
I130 (max)	1300	13.1	99

(Wattage may vary up to 5% from published)

Output Multiplier Table

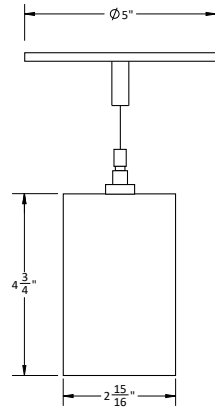
Photometrics and outputs published on this spec sheet are based on nominal 3500K temperature. This table may be used to approximate the lumen values at different Kelvin temperatures. Power consumption would stay the same.

CCT	80 CRI
3000K	0.98
3500K	1
4000K	1.03

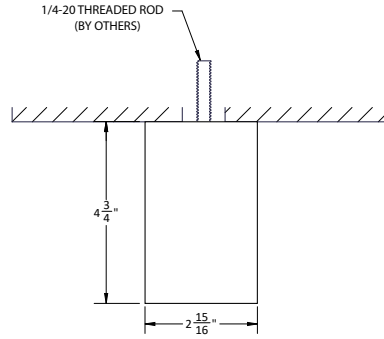
Bend

3" PENDANT OR SURFACE
DIRECT OR INDIRECT/DIRECT

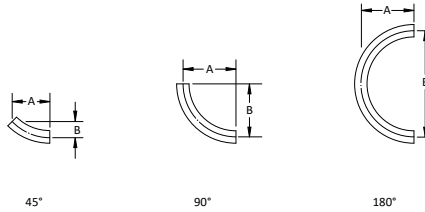
DIMENSIONS



Cross Section
Pendant

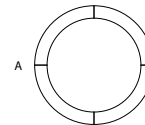
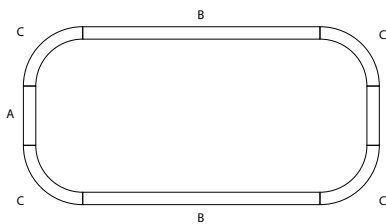


Cross Section
Surface



Arc Specification	Diameter (Nominal)	Angle	DIM A	DIM B
A2/90	2'	90°	12"	12"
A2/180	2'	180°	12"	24"
A4/45	4'	45°	16.97"	7.03"
A4/90	4'	90°	24"	24"
A4/180	4'	180°	24"	48"
A6/90	6'	90°	36"	36"
A8/45	8'	45°	33.94"	14.06"
A8/90	8'	90°	48"	48"
A16/45	16'	45°	67.88"	28.12"
A20/30	20'	30°	60"	16.08"

Ordering Examples



A: (QTY 2) 88L-P-D-3-2-02-WOL-C4-35K-D080-D01-1C-UNV-FA1
 B: (QTY 2) 88L-P-D-3-8-08-WOL-C4-35K-D080-D01-1C-UNV-FA1
 C: (QTY 4) 88L-P-D-3-A4/90-WOL-C4-35K-D080-D01-1C-UNV-FA1

A: (QTY 4) 88L-P-D-3-A4/90-WOL-C5-35K-D100-D01-1C-UNV

Bend

3" PENDANT OR SURFACE
DIRECT OR INDIRECT/DIRECT

PHOTOMETRY

88L-P-D-3-4-WOL-C1-35K8-D105-D01-1C-UNV-H

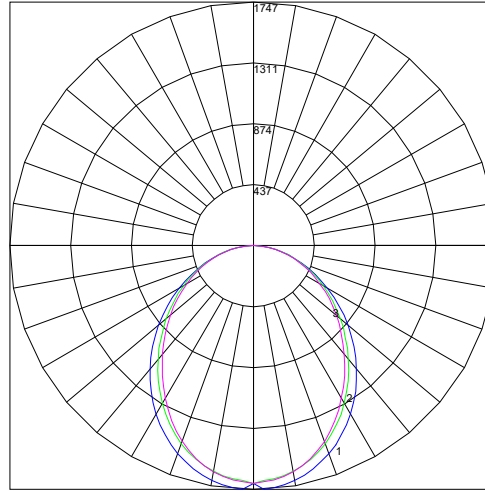
LUMINAIRE DATA

Test No.	R22.01373-15
Description	Pendant Direct 3" Aperture, 4' Length
Delivered Lumens	4200
Watts	62.8
Efficacy	67
Mounting	Pendant

ZONAL LUMEN SUMMARY

Zone	Lumens	% Luminaire
0-40	2015	48
0-60	3372	80
0-90	4200	100
0-180	4200	100

POLAR GRAPH



Maximum Candela = 1747 437, Located At Horizontal Angle = 0, Vertical Angle = 2.5
 # 1 - Vertical Plane Through Horizontal Angles (0 - 180)
 # 2 - Vertical Plane Through Horizontal Angles (45 - 225)
 # 3 - Vertical Plane Through Horizontal Angles (90 - 270)