

FEATURES

- Variable Intensity technology provides a range of specifiable outputs and resulting fixture wattages
- 950 lumens max. See performance data table for additional information.



SPECIFICATIONS

Due to the complexity of this specification, submittal drawings for any configuration are required. Some configurations may require remote mounting drivers.

CONSTRUCTION

- 2.9" x 3.8" profile with 1.9" aperture (nominal).
- Integral 1/2" drywall flange
- Extruded aluminum housing with machined aluminum end headers
- Machined aluminum end caps mechanically attached with no exposed fasteners
- Extruded semi-rigid lens retention rail. Lens rail will match standard housing finish specified.

OPTICS

- 3 SDCM CCT consistency, 80 CRI.
- White Opal (WOL) diffuse acrylic downlight diffuser

ELECTRICAL

- Variable Intensity (VI) technology allows precise specification of fixture output/wattage. Fixture will be programmed and labeled to specification.
- LED boards and solid state constant current driver are field-servicable.
- LED rated life L85 > 50,000 hours. Tested in accordance to LM79-2008 & rated life derived from EPA TM-21 calculator.

ELECTRICAL (CONTINUED)

- 1C (1 Circuit) Fixture wired for a single circuit
- 10W battery powered driver. Provides a minimum of 90 minutes of emergency lighting. Available in straight fixtures greater than 3' in length.
- Inverter-Compatible. Provided by others.
- Operating Temperature: -20 to 25°C

INSTALLATION

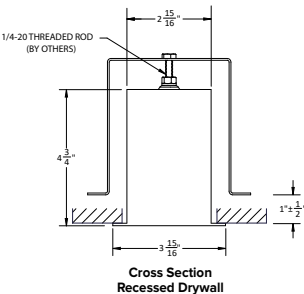
- Integral side rails allow installation into drywall slot. Visible flange is located on all 4 sides of fixture.

CERTIFICATIONS

- ETL listed for damp locations
- IC Rated
- IBEW
- AF of L
- This product meets federal procurement law requirements under the Buy American Act (FAR 52.225-9) and Trade Agreements Act (FAR 52.225-11). See [Buy America\(n\) Solutions](#).
- Emergency Battery Backup options are California Energy Commission (CEC) Title 20 Compliant.

WARRANTY

- LED boards - 5 years
- LED drivers (standard) - 5 years



	Weight
88L-R-3	4 lbs/ft

KEY DATA	
Lumen Range	350–950
SDCM	3
Rated Life	L85 > 50,000 Hours
Efficacy	67-76

ORDERING GUIDE

Example: 88L-DW-D-3-STD-16-08-WOL-C1-35K-D080-D01-1C-UNV

CATALOG #

88L – Straight Sections													
Series		Mounting		Distribution		Aperture		Row Length (In Feet)		Max Length in Row		Direct Diffuser	
88L Bend		DW Drywall		D Direct		3 3"		____' Enter in foot increments		02 2', 609mm 03 3', 914mm 04 4', 1219mm 05 5', 1524mm 06 6', 1828mm 08 8', 2438mm		WOL White Opal Diffuse Lens, Lambertian	

Finish/Color		CCT/CRI		Direct Output/Ft ¹		Driver		Circuiting		Voltage	
C1	Matte White (Default)	30K	3000K, 80CRI	D035	350 (Min)	D01	1% Dimming, 0-10V	1C	1 Circuit	UNV	120-277V
C4	Machined Aluminum	35K	3500K, 80CRI		to						
C5	Carbon Black	40K	4000K, 80CRI	D095	950 (Max)						
CC	Custom Color										

OPTIONAL

Nightlight	Emergency	Thru-Wiring
NL Nightlight Circuit Required ²	EF 10W Emergency Battery Backup (CEC Title 20 Compliant) ³	W1 No Thru-Wire W2 Provide Normal and NL/EF Thru-Wiring ⁴ W3 Provide Normal Thru-Wiring Only

Notes:

¹ Specifiable in 50 lumen increments. Reference the Performance Data Table for full performance offering and exceptions.

² Enter Quantity. 2NL= 2 Nightlight circuits per row.

³ Enter Quantity. 2EF= 2 Batteries per row. 10W battery powered driver. Provides a minimum of 90 minutes of emergency lighting. Inverter Compatible. Provided by others.

⁴ Only applicable when specified with Emergency/Nightlight

ORDERING GUIDE

CATALOG #

Example: 88L-DW-D-3-A4/90-WOL-C1-35K-D080-D01-1C-UNV

88L – Curved Sections					
Series	Mounting	Distribution	Aperture	Arc	Direct Diffuser
88L Bend	DW Drywall	D Direct	3 3"	<div>A2/902' Diameter, 90° Arc</div> <div>A2/1802' Diameter, 180° Arc</div> <div>A4/454' Diameter, 45° Arc</div> <div>A4/904' Diameter, 90° Arc</div> <div>A4/1804' Diameter, 180° Arc</div> <div>A6/906' Diameter, 90° Arc</div> <div>A8/458' Diameter, 45° Arc</div> <div>A8/908' Diameter, 90° Arc</div> <div>A12/4512' Diameter, 45° Arc</div> <div>A16/4516' Diameter, 45° Arc</div> <div>A20/3020' Diameter, 30° Arc</div> <div>Reference page 5 for visual ordering examples.</div>	WOL White Opal Diffuse Lens, Lambertian
Finish/Color	CCT/CRI	Direct Output/Ft ¹	Driver	Circuiting	Voltage
C1 Matte White (Default)	30K 3000K, 80CRI	D035 350 (Min)	D01 1% Dimming, 0-10V	1C 1 Circuit	UNV 120-277V
C4 Machined Aluminum	35K 3500K, 80CRI	to			
C5 Carbon Black	40K 4000K, 80CRI	D095 950 (Max)			
CC Custom Color					

OPTIONAL

Nightlight	Thru-Wiring
NL Nightlight Circuit Required ²	<div>W1No Thru-Wire</div> <div>W2Provide Normal and NL/EF Thru-Wiring ³</div> <div>W3Provide Normal Thru-Wiring Only</div>

Notes:

¹

Specifiable in 50 lumen increments. Reference the Performance Data Table for full performance offering and exceptions.

²

Enter Quantity. 2NL= 2 Nightlight circuits per row.

³

Only applicable when specified with Emergency/Nightlight

Bend
3" RECESSED DIRECT

DATE: LOCATION:
TYPE: PROJECT:
CATALOG #:

PERFORMANCE DATA TABLE

The table below shows the delivered lumens for the various lumen outputs. Use this chart in connection with the output multiplier capability to deliver any output required

Table with 4 columns: Distribution/Output, Lumens/Ft, W/Ft, Efficacy. Rows include D035 through D095 with corresponding values for lumens, wattage, and efficacy.

(Wattage may vary up to 5% from published)

Output Multiplier Table

Photometrics and outputs published on this spec sheet are based on nominal 3500K temperature. This table may be used to approximate the lumen values at different Kelvin temperatures. Power consumption would stay the same.

Table with 2 columns: CCT, 80 CRI. Rows show CCT values of 3000K, 3500K, and 4000K with their respective CRI values.

Bend
3" RECESSED DIRECT

DATE: LOCATION:
TYPE: PROJECT:
CATALOG #:

DIMENSIONS

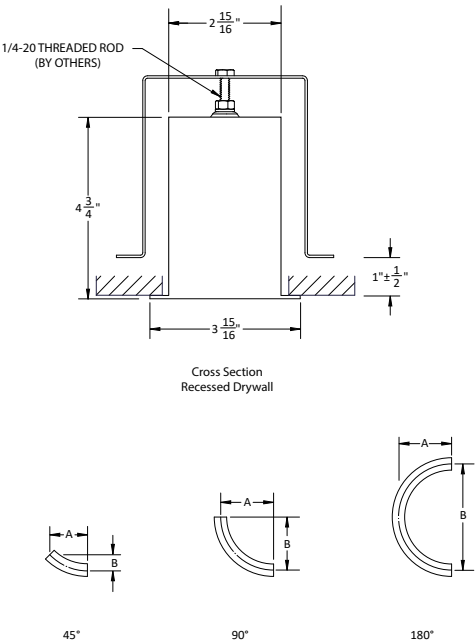
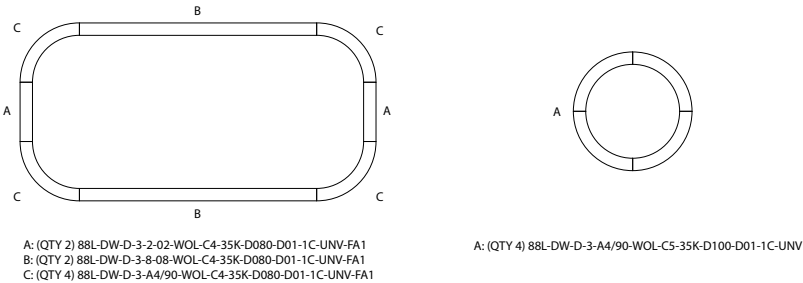


Table with 5 columns: Arc Specification, Diameter [Nominal], Angle, DIM A, DIM B. It lists various bend specifications and their corresponding dimensions.

Ordering Examples



PHOTOMETRY

88L-R-D-3-4-WOL-C1-35K8-D105-D01-1C-UNV-H

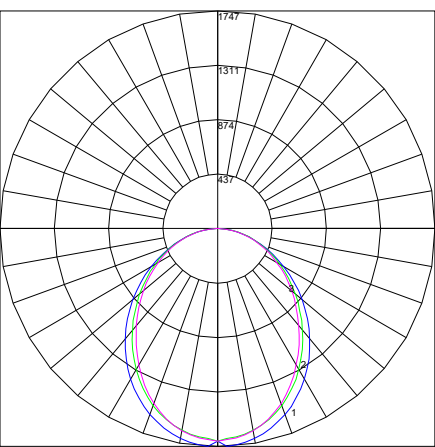
LUMINAIRE DATA

Test No.	R22.01373-30
Description	Recessed Direct 3" Aperture, 4' Length
Delivered Lumens	4200
Watts	62.8
Efficacy	67
Mounting	Recessed

ZONAL LUMEN SUMMARY

Zone	Lumens	% Luminaire
0-40	2015	48
0-60	3372	80
0-90	4200	100
0-180	4200	100

POLAR GRAPH



Maximum Candela = 1747.437 Located At Horizontal Angle = 0, Vertical Angle = 2.5
1 - Vertical Plane Through Horizontal Angles (0 - 180)
2 - Vertical Plane Through Horizontal Angles (45 - 225)
3 - Vertical Plane Through Horizontal Angles (90 - 270)