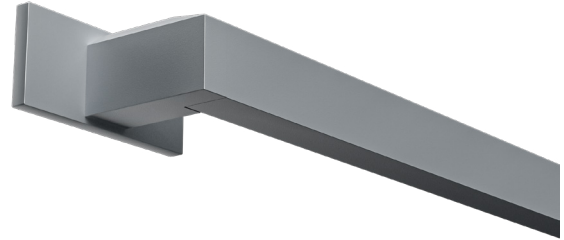


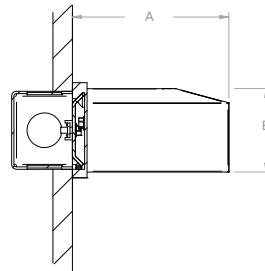
DATE:	LOCATION:
TYPE:	PROJECT:
CATALOG #:	

FEATURES

- Low profile, ADA compliant cross section complements Aira pendant
- Semi-Direct (25/75) asymmetric distribution
- Integral driver, battery options for ease of contractor installation
- Complementary luminous, open center corners allow creation of patterns
- Housing and cross bar inserts are finished to specification to complement the palette of your space



CONTROL TECHNOLOGY



Typical Dimensions		
"A" Depth Inches (mm)	"B" Height Inches (mm)	Max Weight
4.0 (102)	2.1 (54)	4 lbs/ft

See DIMENSIONS section for complete details

SPECIFICATIONS

CONSTRUCTION

- Nominal 2" x 4" rectilinear cross section
- 6063-T6 extruded aluminum housing assembled with die cast and machined aluminum parts
- Dual purpose formed 20GA prepaint steel reflector also serves as wireway cover
- Finished components are powder-coat. Matte polyester powder coat applied in-house on after multi stage wash.
- Machined aluminum wall mount bracket attaches to galvanized steel cleat
- Illuminated system connectors in 90° inside and outside corner configurations. One piece construction, ready to install, with diffusers that match adjoining fixtures. Corner system connectors must be used to form patterns

OPTICS

- UV stabilized, impact resistant, matte textured surface soft diffuse acrylic extruded lens ships installed. Product installation does not require removal of lens
- Semi-Direct (25/75) optical distribution delivers 150-1500 Lumens/foot
- Die-formed steel crossbar insert overlaps diffuser end to eliminate gaps and LED visibility, finished to specification

ELECTRICAL

- Variable Intensity (VI) technology allows precise specification of fixture output/wattage. Fixture will be programmed and labeled to specification
- Current's patented TriGain® phosphor delivers 90 CRI color quality at 80 CRI efficacy
- 2 SDCM color consistency
- Lens, LED Boards and integral solid state constant current drivers are field-serviceable while installed
- Fixture wired for a single circuit
- Emergency Battery: Integral 10W battery powered driver. Provides a minimum of 90 minutes of emergency lighting
- Inverter-Compatible, provided by others.
- NX and SpectraSync™ compatible

CERTIFICATIONS

- cCSAus certified to UL 1598
- Emergency equipped fixtures are listed to UL924 standards
- Suitable for damp locations
- IBEW
- AF of L
- American with Disabilities Act (ADA) compliant

CERTIFICATIONS (CONTINUED)

- This product meets federal procurement law requirements under the Buy American Act (FAR 52.225-9) and Trade Agreements Act (FAR 52.225-11). See [Buy America\(n\) Solutions](#).
- Emergency Battery Backup options are California Energy Commission (CEC) Title 20 Compliant
- Install in environments where ambient temperature does not exceed 25°C

WARRANTY

- 5 year warranty

KEY DATA	
Output Range	150-1500 Lm/Ft
Efficacy Range	104-118 LPW
Color Consistency	2 SDCM

ORDERING GUIDE

Example: AIRA-W-SD-LPA-24-8-SOF-WHS-RGYS-35K9-SD050-D01-1C-UNV-WM

CATALOG # _____

AIRA	W						
Series	Mounting	Fixture Distribution	Indirect Optics	Row Length	Max Length in Row	Diffuser	Finish
AIRA	W Wall	SD Semi-Direct (25/75)	LPA Low Peak Angle	' Enter in foot increments	2 2' 3 3' 4 4' 5 5' 6 6' 8 8'	SOF Soft Diffuse Lens	WHS White, Smooth (C1) GYS Gray, Smooth (C4) BLS Black, Smooth (C5) CC Custom Color

Crossbar Insert Finish	CCT/CRI	Lumen Output ³	Dimming	Circuiting	Voltage	Mounting Kit
RWHS White, Smooth (C1)	27K9 2700K, 90CRI	SD015 150 (min) to	D01 1% 0–10V	1C Single Circuit	UNV Universal (120V-277V)	WM Wall Mount (ADA)
RGYS Gray, Smooth (C4)	30K9 3000K, 90CRI	SD150 1500 (max)	D05 5% 0–10V		347 347V ^{1,4}	
RBLS Black, Smooth (C5)	35K9 3500K, 90CRI		NDM Non-Dimming			
RWH White, Textured	40K9 4000K, 90CRI		LEC 1% Lutron Hi-Lume EcoSystem ¹			
RGY Gray, Textured	50K9 5000K, 90CRI		DALIP DALIP ¹			
RBL Black, Textured	2765T 2700–6500K Tunable White, 90CRI ^{1,2}		SEN 1% for use with Sensors			
RGT Graphite						
RPP Pink Panache						
RGH Grasshopper						
RCOS Copper						
RX Custom Color						

Emergency ⁵	Patterns ⁶	Controls & Sensors ^{1,7}
EF 10W Emergency Battery Pack (CEC Title 20 Compliant) Enter quantity. 2EF = 2 emergency batteries/row	C90IC 90° Inside Corner C90OC 90° Outside Corner	NX - Wired Networked ⁸ NXE NX Wired Dual RJ45 SmartPORTS, without Sensor

Notes:

- 1 Additional lead time may be applicable. Consult factory.
- 2 Must be ordered with D05 dimming.
- 3 Specifiable in 50 lumen increments. Reference the Performance Data Table for full performance offering and exceptions.
- 4 Compatible with D01, D05, NDM, SEN. Excludes EF option.
- 5 EF - 10W battery powered driver. Provides a minimum of 90 minutes of emergency lighting.
- 6 Submittal drawings required for use with EF or 2765T configurations.
- 7 Consult factory for wireless controls and sensor options.
- 8 Refer to NX Integrated Controls Reference Table for Functionality of Options.

AIRA

OPEN CENTER LINEAR WALL

DATE: _____ LOCATION: _____

TYPE: _____ PROJECT: _____

CATALOG #: _____


RESTRICTIONS

Lutron (LEC) Restrictions					
Length	150	200	250	300	350-1500
2'	All not available	LEC not available			
3'	LEC not available				
4'	LEC not available				
5'					
6'					
8'					

Emergency (EF) Restrictions									
Length	150-500	700	750	800	850	900	950	1000	1050-1500
2'	EF not available								
3'	EF not available								
4'									EF not available
5'	EF not available								
6'	EF not available								
8'	EF not available								

CONTROLS OPTIONS AND FUNCTIONALITY



Control Option Ordering Logic & Description			Control Option Functionality							Control Option Components		
			Networkable	Grouping	Scheduling	Occupancy / Motion	Daylight Harvesting	0-10V Dimming	On/Off Control			Bluetooth® App Programming
NX Wired	NXE	NX Wired Dual RJ45 SmartPORTS, without Sensor	✓	✓	✓	-	-	✓	✓	✓ ¹		NXDSP

¹ Requires NXBTC, order separately

CONTROLS TECHNICAL SUPPORT

1-800-888-8006 (7:00 am-7:00 pm est)

CONTROLS OPTIONS AND FUNCTIONALITY (CONTINUED)

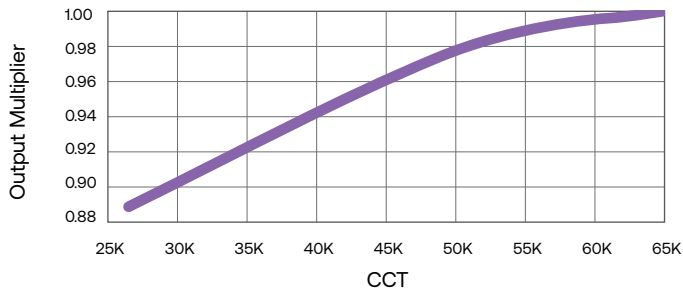
SpectraSync™ Color Tuning Technology:

Control your space based on the needs of the application, specific activities throughout the day and preferences of the occupants with distinct SpectraSync™ Color Tuning Technologies.



SPECTRASYNCH COLOR TUNING TECHNOLOGY		
Mode	Kelvin Range	Description
Tunable White	2700K-6500K	Offers users the ability to tailor CCT to their personal preference, enhancing task visibility, material and colors or the aesthetics of the space

Relative Light Output Based on CCT



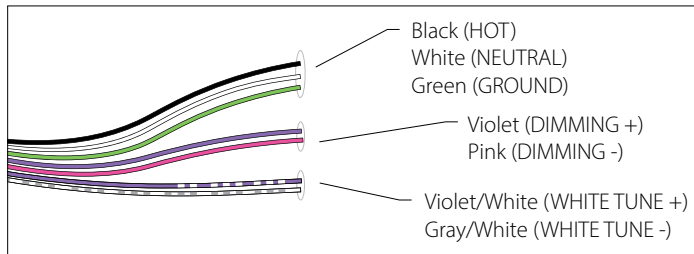
Controller Manufacturer Data

SpectraSync Tunable White was designed to be used with sinking style dimmers (provided by others) and is compatible with:

- Current: NX Lighting Controls Room Controllers (NXRCFX2) and In-fixture Controllers (NXFM2)
- Lutron: DDTV, DVSTV, and NFTV dimmers
- Wattstopper: ADF120277 and CD4BL (Titan) dimmers

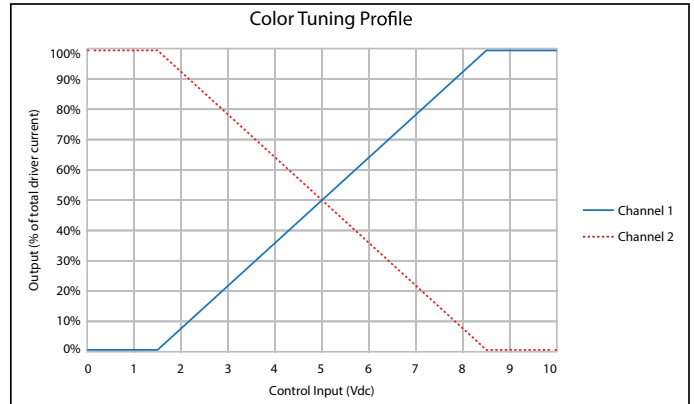
SpectraSync Tunable White

Available in 2765T (2700K-6500K). Requires two 0-10V controllers, one for intensity and one for CCT. Minimum 5% dimming.



SpectraSync Tunable White luminaires are provided with two 0-10V circuits. The violet and pink circuit is for wiring to any qualified 0-10V controller for dimming. The violet/white and gray/white circuit is for wiring to any qualified 0-10V controller for Tunable White CCT control.

Color Tuning Profile



PERFORMANCE DATA TABLE

The table below shows the delivered lumens for the various lumen outputs. Use this chart in connection with the output multiplier capability to deliver any output required

Nomenclature	Lumens/Ft	Wattage/Ft	Efficacy [Lm/W]
SD015	150	1.4	104
SD020	200	1.8	109
SD025	250	2.2	112
SD030	300	2.6	114
SD035	350	3.0	116
SD040	400	3.4	116
SD045	450	3.8	117
SD050	500	4.3	117
SD055	550	4.7	118
SD060	600	5.1	118
SD065	650	5.5	118
SD070	700	5.9	118
SD075	750	6.4	118
SD080	800	6.8	117
SD085	850	7.3	117
SD090	900	7.7	117
SD095	950	8.1	117
SD100	1000	8.6	116
SD105	1050	9.1	116
SD110	1100	9.5	115
SD115	1150	10.0	115
SD120	1200	10.5	114
SD125	1250	11.0	114
SD130	1300	11.5	113
SD135	1350	12.0	112
SD140	1400	12.5	112
SD145	1450	13.0	111
SD150	1500	13.6	111

(wattage may vary up to 5% from published)

Lumen Maintenance

Values calculated to estimate lumen degradation over time derived from IES TM-21. Calculations based on luminaires tested to LM-79-2008 in 25°C (77°F) ambient environment at their worst thermal configuration.

	TM-21-22 Reported	TM-21-11 Calculated
L90	>50,000	65,000
L80	>60,000	160,000
L70	N/A	260,000

TM-21-22 reported values are supported by IES standards and based on six times LM-80 test time for the LED and in-situ thermal testing of luminaire per IES TM-21.

TM-21-11 values represent commonly used theoretical estimations. The IES has published an updated position on LED Product Lifetime Prediction (IES PS-10-18) explaining the proper use of IES TM-21 and LM-80.

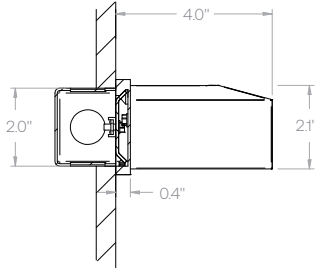
Output Multiplier Table

Photometrics for the Aira Family are published at a nominal 3500K temperature, 90 CRI. This table may be used to approximate the lumen values at different Kelvin temperatures. Power consumption would stay the same.

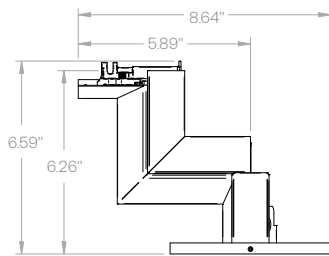
CCT	2700K	3000K	3500K	4000K
Multiplier	0.89	0.96	1.0	1.0

DIMENSIONS

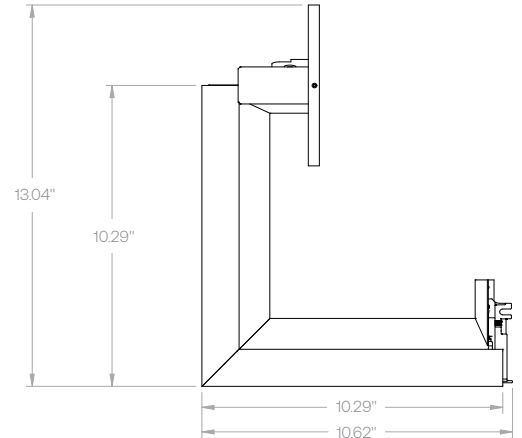
End View



Corner Types

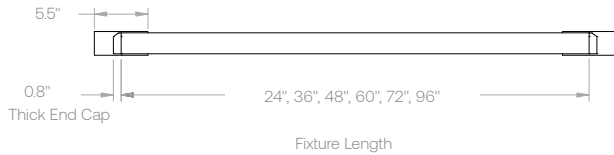


Inside Corner
C90IC
Weight: 1 lb

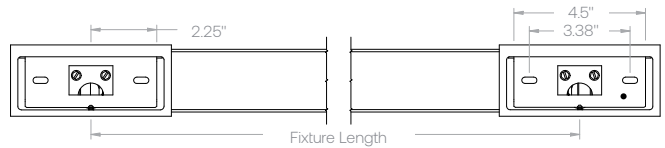


Outside Corner
C90OC
Weight: 15 lb

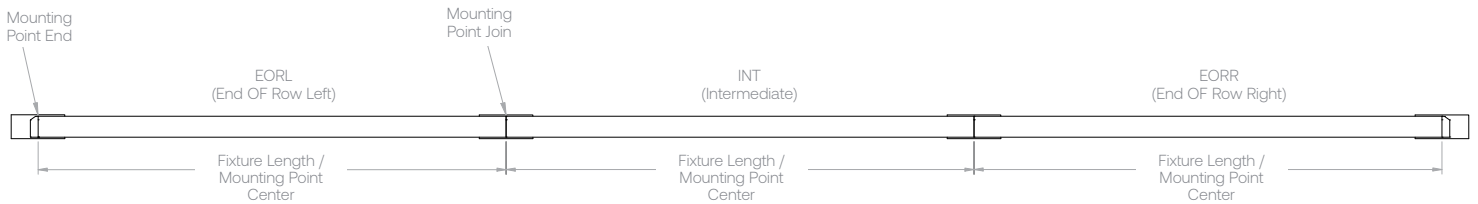
Front View - Individually (IND) Mounted



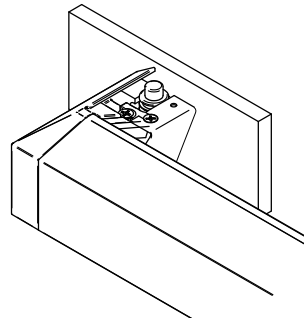
Back View - Individually (IND) Mounted



Front View - Row Mounted

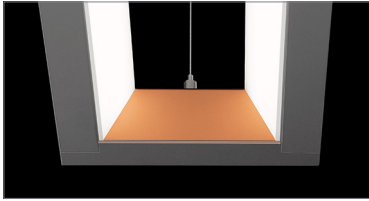


EF TEST SWITCH LOCATION

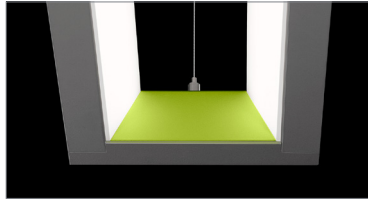


Length	Standard lbs/ft	Max lbs/ft
2	3.3	3.6
3	3.3	3.6
4	3.3	4.0
5	3.2	3.8
6	3.2	4.0
8	3.1	3.7

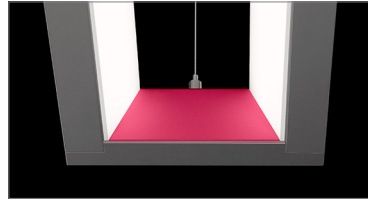
FINISHES



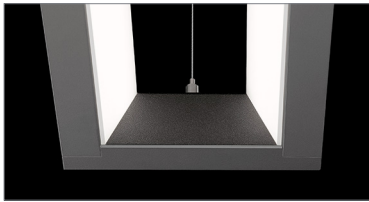
Copper



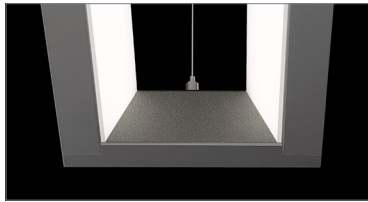
Grasshopper



Pink Panache



Black Textured



Graphite



Gray
Textured



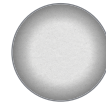
Gray
Smooth



Black
Smooth



White
Textured



White
Smooth



Custom
Color

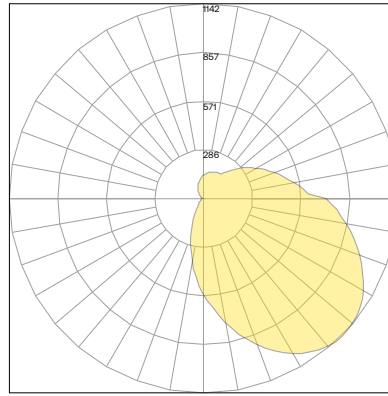
PHOTOMETRY

AIRA-W-SD-LPA-4-SOF-WHS-35K9-SD080-DO1-1C-UNV

LUMINAIRE DATA

Test No.	P23.01794
Description	4' Aira Linear Wall, 3500K, 90 CRI
Delivered Lumens	3200
Watts	27.3
Efficacy	117
Mounting	Wall

POLAR GRAPH

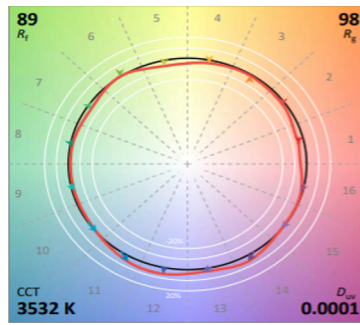


Maximum Candela = 1142.114 Located At Horizontal Angle = 0, Vertical Angle = 45
Vertical Plane Through Horizontal Angles (0°-180°)

ZONAL LUMEN SUMMARY

Zone	Lumens	% Luminaire
0-40	750	23
0-60	1468	46
0-90	2389	75
0-180	3200	100

TM-30 DATA



— Reference Illuminant — Test Source

TEST RESULTS	
Value	35K9
CCT (K)	3533
CIE R _a	94
D _{UV}	0.0001
R _f	89
R _g	98
x	0.4036
y	0.3902

	HUE-ANGLE BIN (J)															
	1	2	3	4	5	6	7	8	9	10	11	12	13	14	15	16
Chroma Shift (R _{cs,j})	-12	-8	-3	1	3	4	-2	-4	-7	-7	1	6	6	7	-1	-6
Hue Shift (R _{hs,j})	-0.01	0.07	0.12	0.08	0.05	-0.02	-0.06	-0.02	0.02	0.1	0.14	0.06	-0.03	-0.13	-0.14	-0.12
Fidelity (R _{fh,j})	80	82	77	86	91	92	90	92	89	81	79	83	89	82	80	79

CRI: 80 MINIMUM

CCT	CRI	R1	R2	R3	R4	R5	R6	R7	R8	R9	R10	R11	R12	R13	R14
35K	94	96	97	95	95	94	95	95	89	73	89	95	70	96	96