

FEATURES

- 3" architectural LED downlight cylinder delivering 600 up to 2000 lm
- Five beam distributions from 0.4 to 1.2 Spacing Criteria
- Quiet reflector appearance with 50° optical cutoff
- 2700K–5000K, 80+ and 90+ CRI options
- Available in Surface, Wall, Pendant, or Cord Mount configurations
- Versatile canopy options for recessed and surface-mounted J-box applications
- Variety of dimming protocol options including 0–10V, DALI, DMX, and Lutron EcoSystem



(Select Models)



C US



(-BAA Option)



(-TAA Option)

CONTROLS TECHNOLOGY



SPECIFICATIONS

CONSTRUCTION

- Seamless heavy gauge aluminum cylinder body with a clean appearance
- Available in Surface (S), Wall (W), Pendant (P), or Cord (CM) mounting types
- Canopy options include Conduit Canopy (CC), Power Canopy (PC), Power Conduit Canopy (PCC), or Recessed Mount Driver (RMD), (See Dimensions section for details)
- For S, P, or CM mounting with PCC canopy options, use 4" octagonal junction box (by others)
- All Wall Mount: Die cast aluminum mounting arm allows direct mounting to standard 4" octagonal or square junction box
- Pendant Mount canopy options allow sloped ceiling up to 35° (5° for RMD)
- Select from 4 standard architectural painted finishes, Brushed Aluminum, or specified custom color

OPTICS

- Visually pleasing 50° cutoff to source and source image
- The light distribution is free of distracting bright spots or pixelation and the perimeter has a smooth transition
- Optical grade silicone lens integral to light engine
- High purity four panel spun aluminum reflector, self-flanged
- Large selection of anodized finishes and colors
- Painted cones and flange options available

ELECTRICAL

- Chip-on-board LED with 2 SDCM
- Multiple CCTs, 80+ or 90+ CRI
- Long LED life: L90 at >55,000 (TM-21)
- Universal voltage 120V–277V driver, 347V optional
- UL Class 2, inherent short circuit and overload protection
- Flicker free 0–10V dimming with 1% or <1% performance
- DALI, DMX, and Lutron EcoSystem options
- NX Lighting Controls provides options for standalone and networked functionality with wired or wireless connectivity for NX system deployments
- Lutron Athena control options also available

INSTALLATION

- Light Engine/Trim assembly is mechanically secured with torsion springs for ease of installation
- A quick connect is provided for easy maintenance or upgrade
- Recessed Mount Driver (RMD) is accessible from above or below ceiling; assembly mounts with ¼-20 threaded rod (by others) and requires 6" plenum clearance
- Conduit canopy option (PCC) allows field selectable conduit entry (up to 4@ 90°) (See Dimensions section)
- Conduit Canopy utilizes a patent pending mounting yoke to secure cylinder to the ceiling surface
- Cord can be cut in the field to custom length
- Standard and Custom Pendant lengths available (specify when ordering)

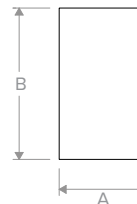
CERTIFICATIONS

- cCSAus certified to UL 1598
- Wall Mount (except CC and PCC): Suitable for wet locations
- Pendant Mount (except PCC): Suitable for wet locations under covered ceiling
- Surface & Cord Mount and all CC and PCC: Suitable for damp locations
- For -BAA Option: This product meets federal procurement law requirements under the Buy American Act (FAR 52.225-9). [See Buy America\(n\) Solutions](#)
- For -TAA Option: Product configurations meet federal procurement law requirements under the Trade Agreements Act (FAR 52.225-11). [See Buy America\(n\) Solutions](#)

WARRANTY

- 5 year warranty

LITEISTRY™



Typical Dimensions and Weights			
Lumen Package	"A" Width (SQ) Inches (mm)	"B" Height Inches (mm)	Weight lbs (kg)
06–20L	4 (102)	7 (178)	7.5 (3.4)

See DIMENSIONS section for complete details

KEY DATA	
Lumen Range	600–2000
Wattage Range	8–25
Efficacy Range (LPW)	77–82*
Reported Life (Hours)	L90 / >55,000
Input Current (mA)	67–208 (120V)

*Based on Specular, 35K, 80 CRI

ORDERING GUIDE

Example: LTC-3SQD-CM15WHPCC-15L35K9WD-DM1-SS-WH

CATALOG #

LTC-3SQD					
Aperture/Shape/Function		Cylinder Mounting	Canopy Option	Lumen Output	CCT
LTC-3SQD 3" Square Downlight Cylinder		S Surface	Refer to chart on Page 3 for available canopy options based on driver/controls selection	06L 600 Lumens ³	27K 2700K
LTC-3SQDS 3" Square Shallow Downlight Cylinder ⁷		W Wall		10L 1000 Lumens ³	30K 3000K
		P Pendant (Standard) Nominal 18" length from cylinder top to ceiling ¹⁰	Standard Canopy ^{3,9}	15L 1500 Lumens ³	35K 3500K
		P_ Pendant (Custom) Specify length from cylinder top to ceiling in 1 inch increments from 15 to 60 ¹⁰	CC Conduit Canopy ^{3,9}	20L 2000 Lumens ³	40K 4000K
		Cord ⁵	PC Power Canopy ^{3,9}		50K 5000K ¹
		CM 6ft Clear Cord	PCC Power Conduit Canopy ^{3,9}		
		CMBL 6ft Black Cord	RMD Recessed Mount Driver ^{3,9}		
		CMWH 6ft White Cord			
		CM15 15ft Clear Cord			
		CM15BL 15ft Black Cord			
		CM15WH 15ft White Cord			

Distribution		Driver Options	Control Options	Voltage	Reflector Finish	Reflector Color
VNR Very Narrow (0.4 SC/24") ⁸		DM1 0-10V Dimming to 1% ³	NX Lighting Controls	Standard 120-277V	Finish not applicable with painted reflectors (WC or BC)	Standard Clear
NR Narrow (0.6 SC/38")		DM01 0-10V Dimming to <1% ³	Networked Wireless	34 347V ^{3,6}	CG Champagne Gold	BL Black
MD Medium (0.7 SC/48")		DMX DMX with RDM dimming to <0.1% ³	NXW NX Networked Wireless Radio Module NXRM2 and Bluetooth Programming, without Sensor ^{2,3}		LW Light Wheat	PW Pewter
WD Wide (1.0 SC/62")		DALI DALI Dimming to 1% ³	Networked Wired		VS Softglow®	WC Painted White Cone and Flange
XW Extra Wide (1.2 SC/74")		EDM Lutron Hi-Lume EcoSystem Dimming to 1% ³	NXE NX Wired Dual RJ45 SmartPORTS, without Sensor ^{2,3}			BC Painted Black Cone and Flange
		DM00 Lutron Athena compatible driver option ^{3,12}	Other Lighting Controls			
			Networked Wireless			
			AWNDR Lutron Athena Enabled ^{3,12}			

Flange Color Options	Exterior Cylinder Color	Options
Standard matches reflector color	BA Brushed Aluminum ¹¹	BAA Buy American Act (FAR 52.225-9) Compliant
WT White Flange ⁴	BZ Bronze	TAA Trade Agreements Act (FAR 52.225-11) Compliant
BT Black Flange ⁴	BL Matte Black	
	WH Matte White	
	SVR Silver	
	CC_ Custom Color (Specify RAL#, Example: CCRAL1073)	
	TCC_ True Custom Color (Specify description, Example: TCC BABY BLUE, Paint chip must be provided to match)	

Notes:

- 5000K available in 80+ CRI only.
- NX requires DM1 driver option.
- For lumen outputs/configurations available, see chart on page 3.
- WT not needed for WC, BT not needed for BC.
- Cord can be cut in the field to custom length.
- 347V requires DM1 driver; not available with Controls.
- Available in Wall Mount only.
- VNR available up to 15L.
- See Dimensions section for canopy configuration details.
- Stem length varies by canopy configuration. See Dimensions section for details.
- Canopy and metal accent color for Brushed Aluminum is Black.
- DM00 must be selected with AWRNR Lutron Athena controls option.

DRIVER/CONTROL OPTION AVAILABILITY

Driver and Control options listed below are available in the configurations and lumen packages as shown.

For LTC-3SQD:

Driver/Control Option		Cylinder Mounting ¹	Canopy Options ²	06L	10L	15L	20L
DM1	0–10V 1%	W	Standard/CC	●	●	●	●
		P/S/CM	PC/PCC/RMD ⁵	●	●	●	●
DM01	0–10V <1%	W	Standard/CC	●	●	●	●
		P/S/CM	PC/PCC/RMD	●	●	●	
DALI	DALI 1%	W	Standard/CC	●	●	●	●
		P/S/CM	PC/PCC/RMD	●	●	●	
DMX	DMX w/ RDM <0.1%	W	Standard/CC	●	●	●	●
		P/S/CM	PC/PCC/RMD ⁵	●	●	●	●
EDM	Lutron Hi-Lume EcoSystem 1%	W	Standard/CC		●	●	●
		P/S/CM	PC/PCC/RMD		●	●	●
347V ³	347 Volts (DM1 required)	W	Standard/CC	●	●	●	●
		P/S/CM	PC/PCC/RMD ⁵	●	●	●	●
NXE	NX Wired (DM1 required)	W	PC/PCC	●	●	●	●
		P/S/CM	PC/PCC/RMD	●	●	●	●
NXW	NX Wireless (DM1 required)	W	PC/PCC	●	●	●	●
		S	RMD	●	●	●	●
		P/CM	PC/PCC/RMD	●	●	●	●
DM00/ AWNRR	Lutron Athena 0–10V Dim to Off	W	PC/PCC	●	●	●	●
		S	RMD	●	●	●	●
		P/CM	PC/PCC/RMD	●	●	●	●

For LTC-3SQDS Shallow Cylinder Body:

Driver/Control Option		Cylinder Mounting	Canopy Options	06L	10L	15L	20L
DM1	0–10V 1%	W	PC/PCC	●	●	●	●
DM01	0–10V <1%	W	PC/PCC	●	●	●	●
DALI	DALI 1%	W	PC/PCC	●	●	●	●
DMX	DMX w/ RDM <0.1%	W	PC/PCC	●	●	●	●
EDM	Lutron Hi-Lume EcoSystem 1%	W	PC/PCC		●	●	●
347V ³	347 Volts (DM1 required)	W	PC/PCC	●	●	●	●
NXE	NX Wired (DM1 required)	W	PC/PCC	●	●	●	●
NXW	NX Wireless (DM1 required)	W	PC/PCC	●	●	●	●
DM00/ AWNRR	Lutron Athena 0–10V Dim to Off	W	PC/PCC	●	●	●	●

- See Cylinder Mounting chart.
- See Canopy Options chart and Dimensions section for details.
- Not available with Controls.
- RMD is Non-IC rated unless noted.
- IC Rated.

Cylinder Mounting		Canopy Options	
S	Surface Mount	(Blank)	Standard Canopy
W	Wall Mount	CC	Conduit Canopy
P	Pendant Mount	PC	Power Canopy
CM	Cord Mount	PCC	Power Conduit Canopy
		RMD	Recessed Mount Driver ⁴



LTC-3SQD

LITEISTRY 3" SQUARE CYLINDER

DATE:

LOCATION:

TYPE:

PROJECT:



CATALOG #:

PERFORMANCE DATA TABLE

Performance data provided below is for 3500K, 80 CRI with Specular Clear reflector finish/color

Lumen Package	Nominal Lumens	Distribution	Delivered Lumens	Watts	LPW
06L	600	Very Narrow	635	7.9	81
		Narrow	714	7.8	92
		Medium	685	7.8	88
		Wide	656	7.8	84
		Extra Wide	614	7.8	79
10L	1000	Very Narrow	998	12.4	81
		Narrow	1149	11.9	97
		Medium	1103	11.9	93
		Wide	1056	11.9	89
		Extra Wide	988	11.9	83
15L	1500	Very Narrow	1348	18.2	74
		Narrow	1662	18.6	89
		Medium	1596	18.6	86
		Wide	1528	18.6	82
		Extra Wide	1429	18.6	77
20L	2000	Narrow	2060	25.0	82
		Medium	2018	25.0	81
		Wide	1975	25.0	79
		Extra Wide	1910	25.0	76

NX LIGHTING CONTROLS

Control Option Ordering Logic & Description			Control Option Functionality								Control Option Components	
			Networkable	Grouping	Scheduling	Occupancy/Motion	Daylight Harvesting	0-10V Dimming	On/Off Control	Bluetooth App Programming		
NX Wireless	NXW	NX Networked Wireless Radio Module NXRM2 and Bluetooth Programming, without Sensor	✓	✓	✓	-	-	✓	✓	✓		NXRM2-H
NX Wired	NXE	NX Wired Dual RJ45 SmartPORTS, without Sensor	✓	✓	✓	-	-	✓	✓	✓ ¹		NXDSP

¹ Requires NXBTC, order separately.

NX LIGHTING CONTROLS APP



The NX Lighting Controls App is a free to use mobile application for programming both an NX Lighting Controls System or Standalone Bluetooth Sensors. The mobile app allows you to configure devices, discover and setup wireless enabled luminaires and program your NX system settings.




Android



Apple iOS

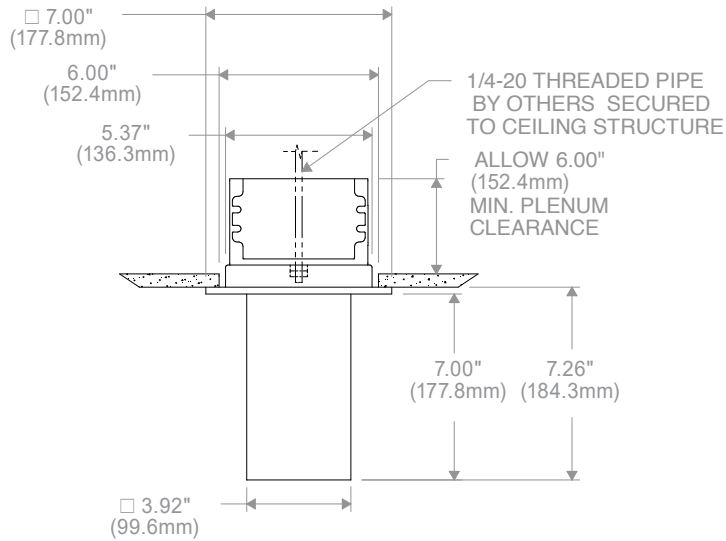
OTHER LIGHTING CONTROLS

Control Option Ordering Logic & Description			Control Option Functionality								Control Option Components	
			Networkable	Grouping	Scheduling	Occupancy/Motion	Daylight Harvesting	0-10V Dimming	On/Off Control	Bluetooth App Programming		
Other	AWNDR	The Athena wireless node is a radio frequency (RF) device that enables simple, digital control of individual light fixtures in an Athena control system. ¹	✓	✓	-	-	-	✓	✓	-		A-WN-D01-RF-WH

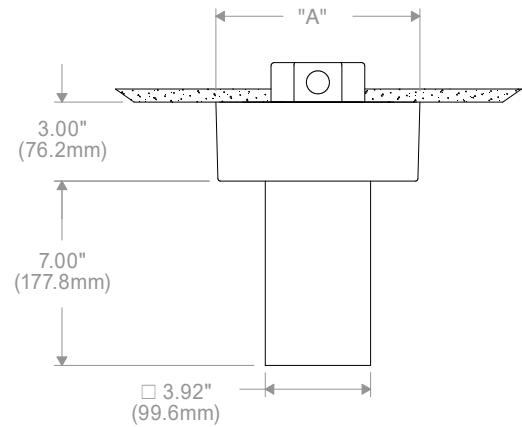
¹ Lutron Athena Hub required to enable Networking, Grouping and Scheduling.

DIMENSIONS

LTC-3SQD (7" CYLINDER BODY) SURFACE (S)

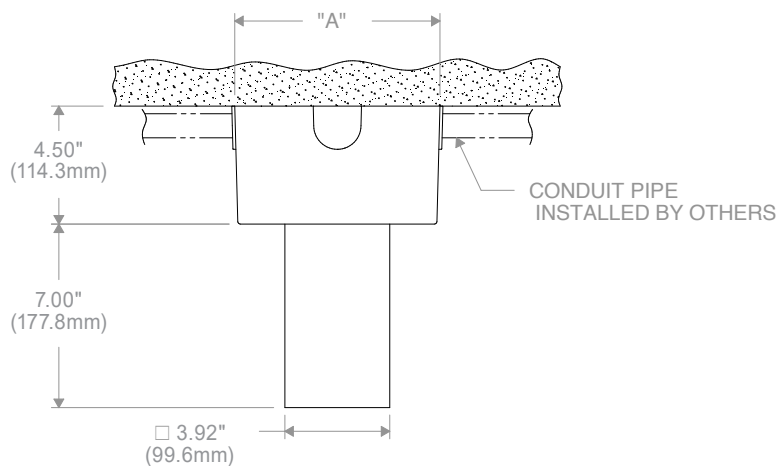


**Surface
Recessed Mount Driver
SRMD**



**Surface
Power Canopy
SPC**

Driver/ Controls	"A"
Standard	□ 5.74" (145.8mm)
DMX/NXW/ NXE/AWNR	□ 7.75" (196.9mm)

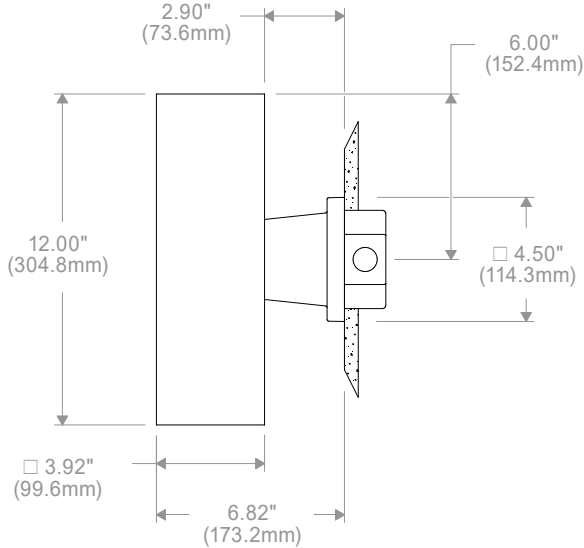


**Surface
Power Conduit Canopy
SPCC**

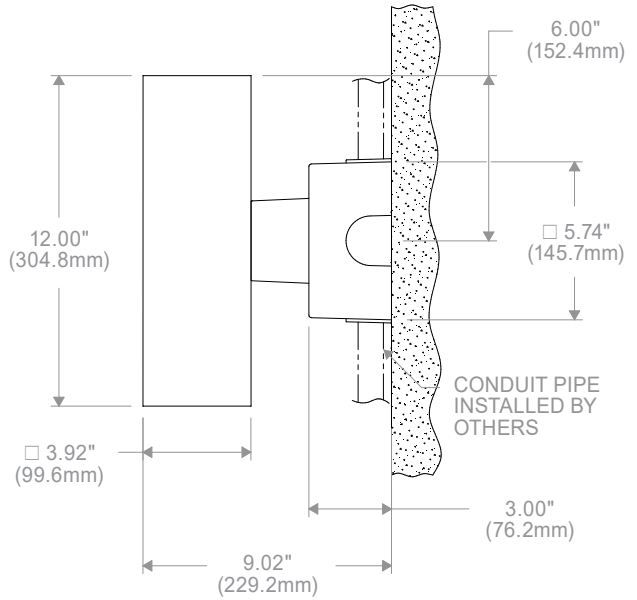
Driver/ Controls	"A"
Standard	□ 5.82" (148.1mm)
DMX/NXW/ NXE/AWNR	□ 7.83" (198.9mm)

DIMENSIONS

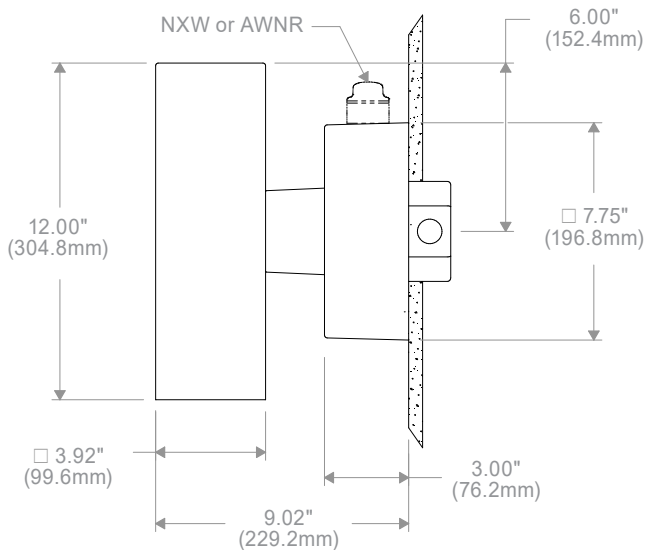
**LTC-3SQD
(12" CYLINDER BODY)
WALL (W)**



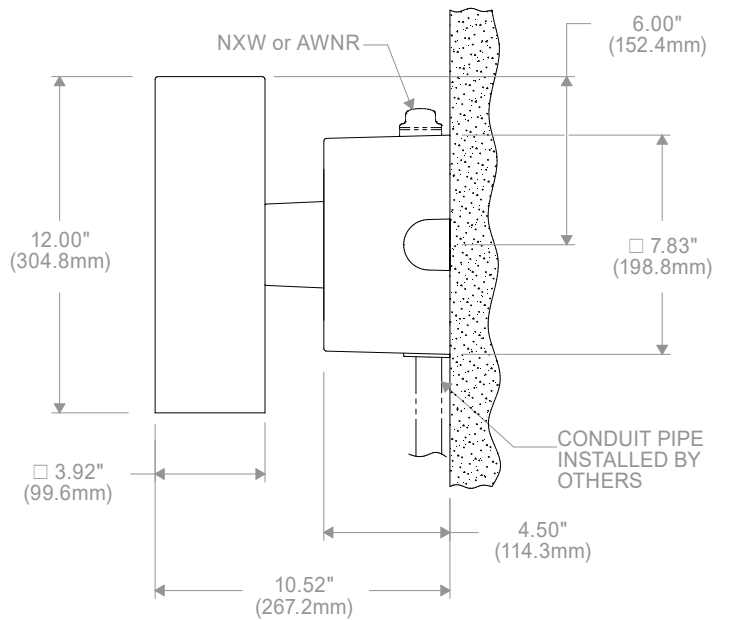
**Wall
Standard Canopy
W**



**Wall
Conduit Canopy
WCC**



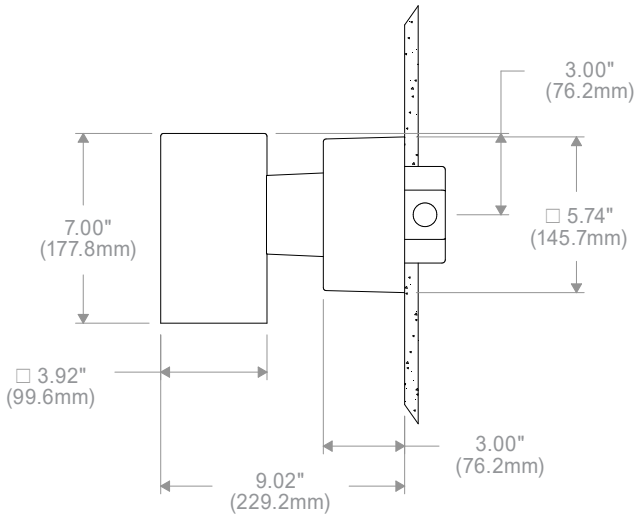
**Wall
Power Canopy
WPC**



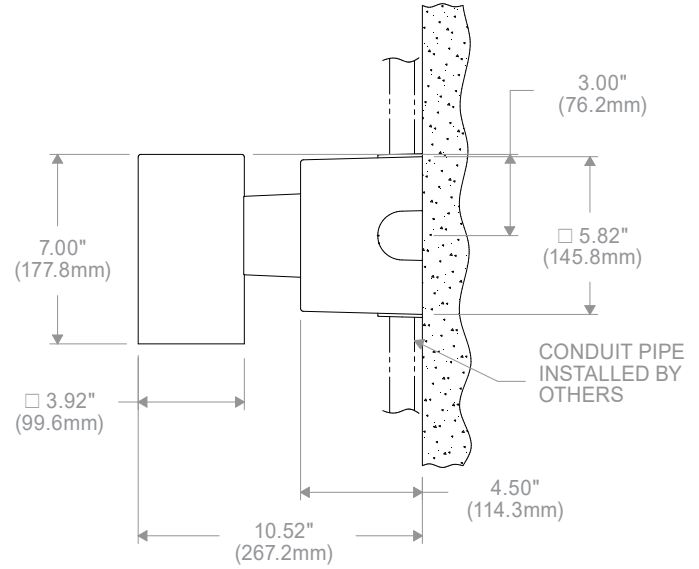
**Wall
Power Conduit Canopy
WPCC**

DIMENSIONS

**LTC-3SQDS
(7" CYLINDER BODY)
WALL (W)**

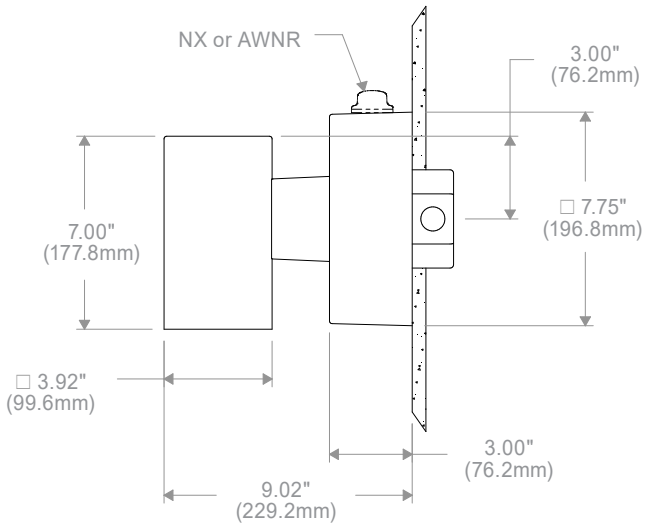


**Wall
Power Canopy
WPC**

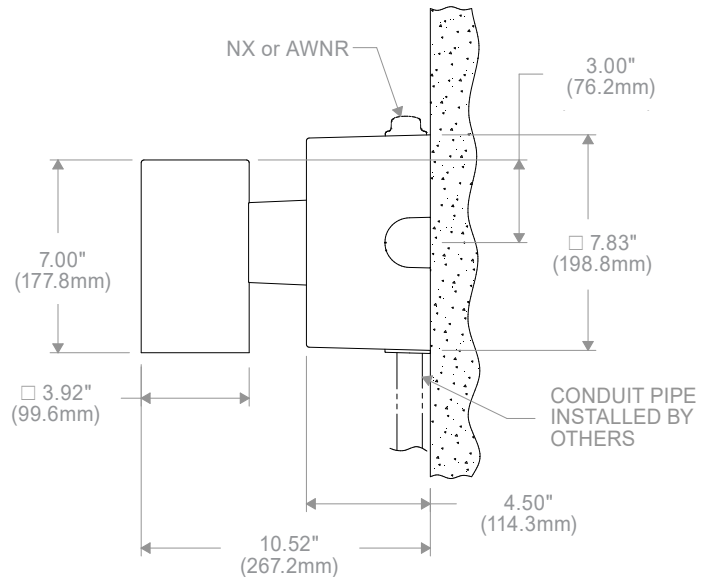


**Wall
Power Conduit Canopy
WPCC**

(FOR DMX OR CONTROLS OPTIONS ONLY)



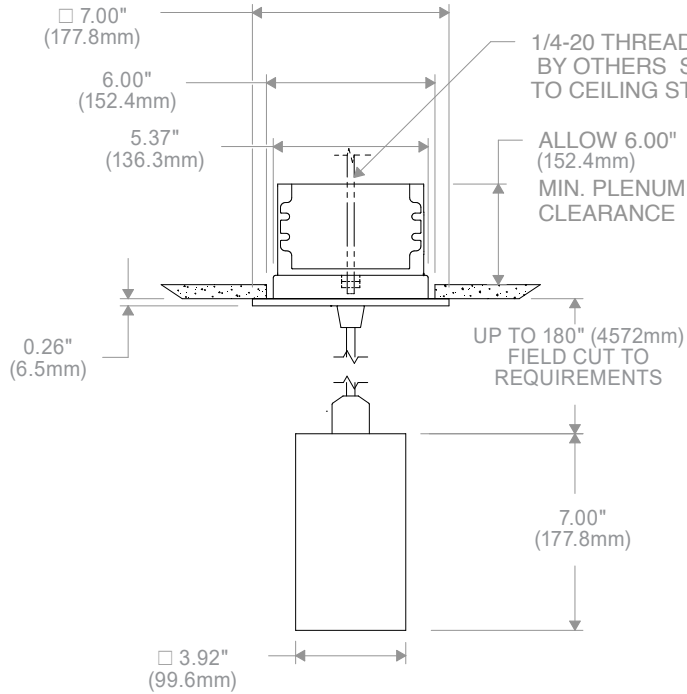
**Wall
Power Canopy
WPC**



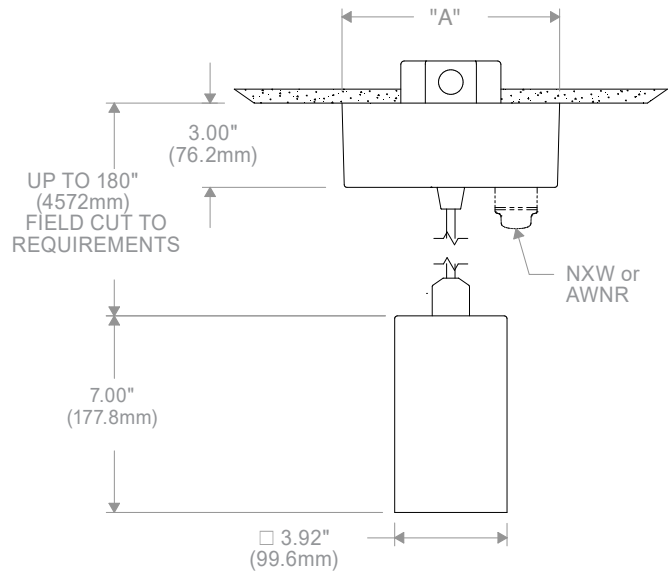
**Wall
Power Conduit Canopy
WPCC**

DIMENSIONS

**LTC-3SQD
(7" CYLINDER BODY)
CORD (CM)**

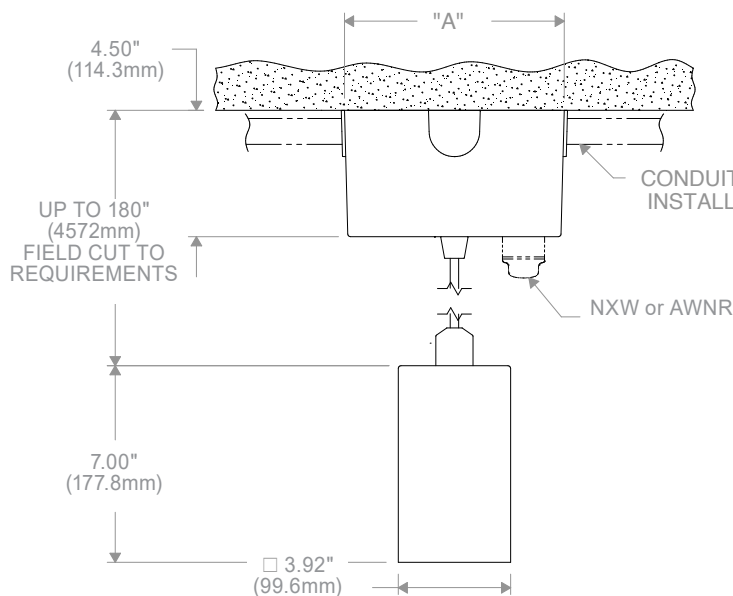


**Cord
Recessed Mount Driver
CMRMD**



**Cord
Power Canopy
CMPC**

Driver/ Controls	"A"
Standard	5.74" (145.8mm)
DMX/NXW/ NXE/AWRN	7.75" (196.9mm)

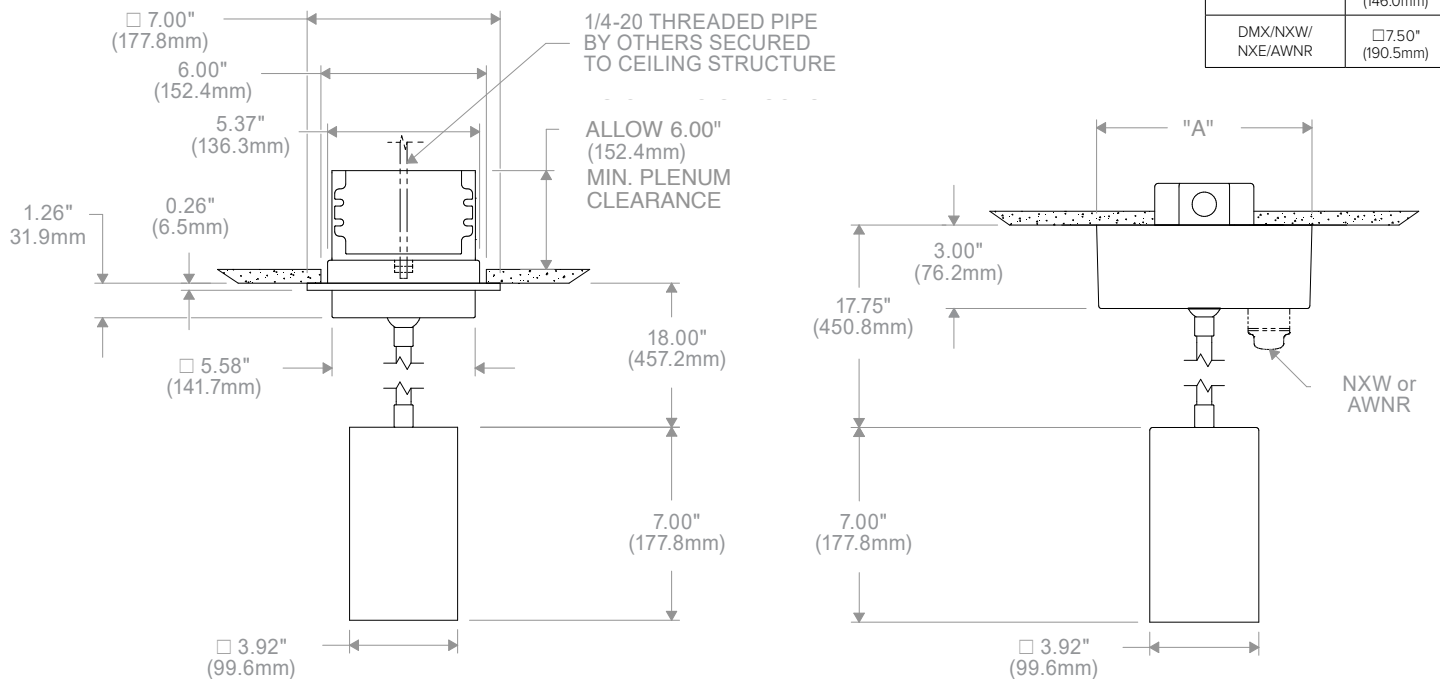


**Cord
Power Conduit Canopy
CMPCC**

Driver/ Controls	"A"
Standard	5.82" (147.8mm)
DMX/NXW/ NXE/AWRN	7.83" (198.9mm)

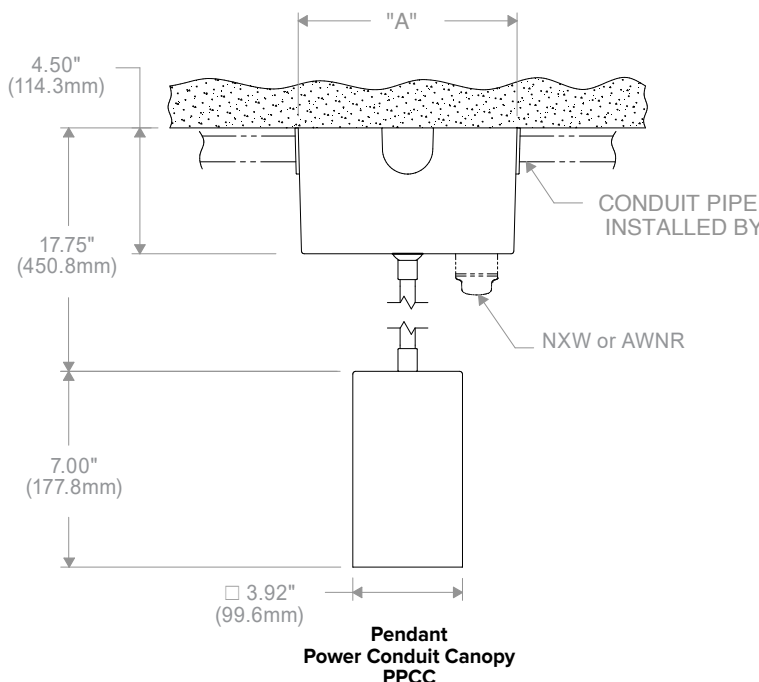
DIMENSIONS

LTC-3SQD (7" CYLINDER BODY) PENDANT (P)



Pendant
Recessed Mount Driver
PRMD

Pendant
Power Canopy
PPC



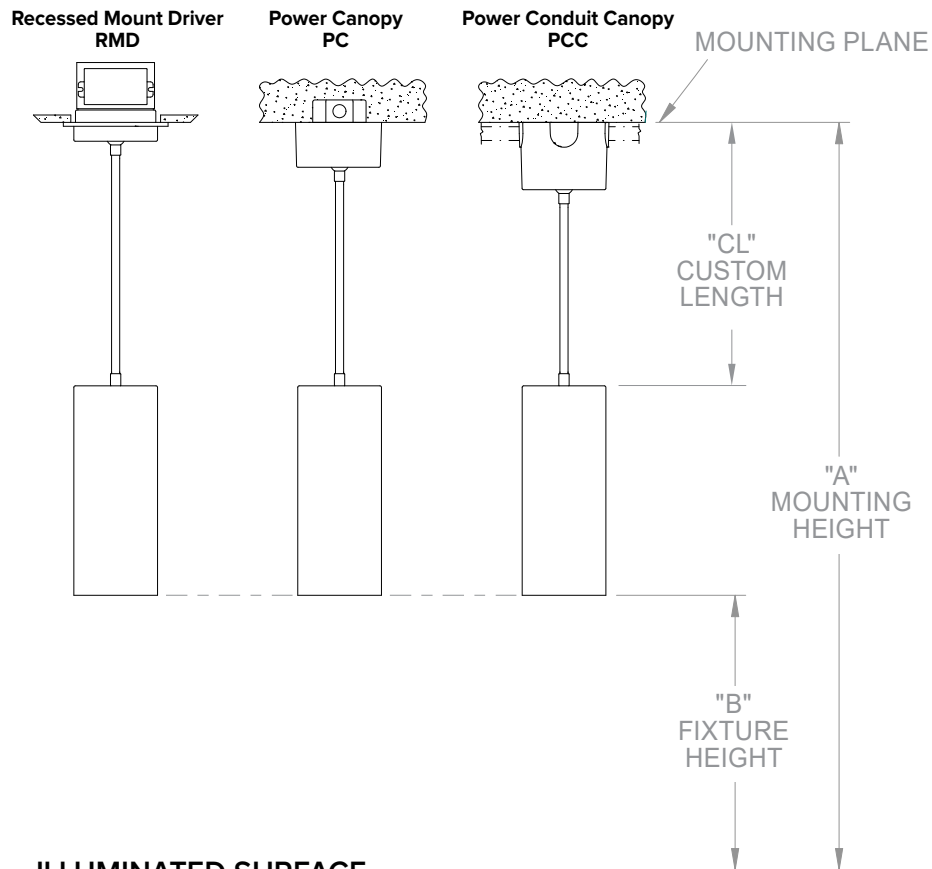
Pendant
Power Conduit Canopy
PPCC

Driver/ Controls	"A"
Standard	□ 5.75" (146.0mm)
DMX/NXW/ NXE/AWRN	□ 7.50" (190.5mm)

Driver/ Controls	"A"
Standard	□ 5.83" (148.1mm)
DMX/NXW/ NXE/AWRN	□ 7.58" (192.5mm)

DIMENSIONS

PENDANT CUSTOM LENGTH



ILLUMINATED SURFACE

Custom Length (CL) = Mounting Height (A) - Fixture Height (B) - 7" Cylinder

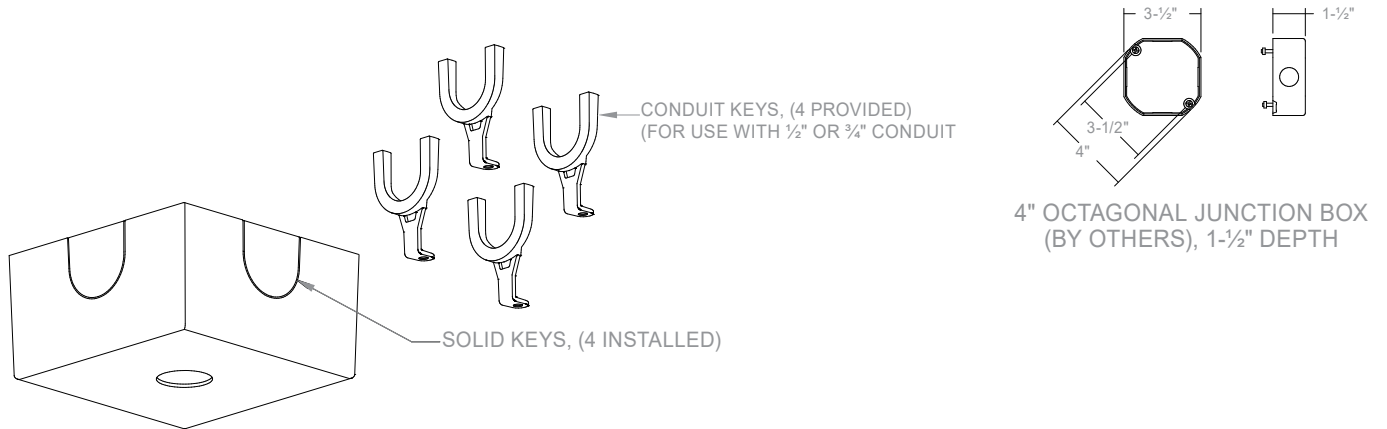
Ordering Example:

A (120") - B (72") - 7" = 41" Custom Length
LTC-3SQD-P41

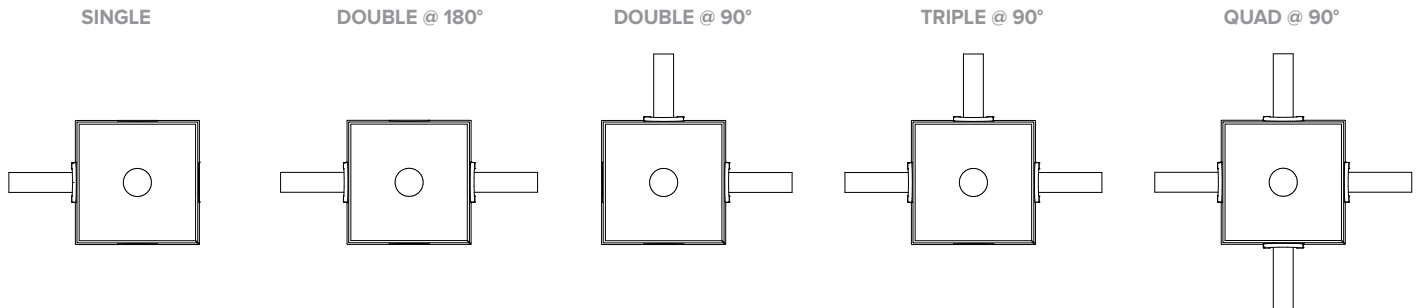
DIMENSIONS

CONDUIT CANOPY DETAILS

CC and PCC Conduit Canopy options come standard with (4) Solid Keys installed and (4) Conduit Keys provided.
Accommodates a 4" octagonal junction box with 1-1/2" depth (by others).



CONDUIT MOUNTING EXAMPLES - FIELD INTERCHANGEABLE



PHOTOMETRY

LTC-3SQD-P-15L35K8VNR-DM1-S-BL

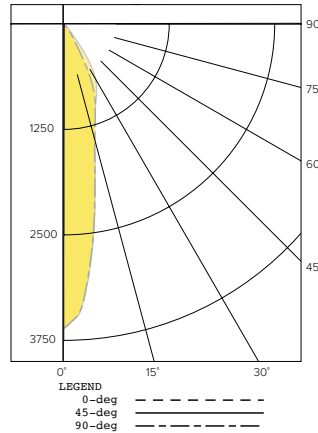
LUMINAIRE DATA

Test No.	R20.01196-C01
Description	1500 lm, Very Narrow, 3500K, 80 CRI
Delivered Lumens	1348
Watts	18.2W
Efficacy	74
Mounting	Pendant
Spacing Criterion	0.4
Beam Angle (FWHM)	24

ZONAL LUMEN SUMMARY

Zone	Lumens	% Luminaire
0-40	1243	92.2
0-60	1339	99.3
0-90	1348	100.0
0-180	1348	100.0

POLAR GRAPH



CANDELA DISTRIBUTION

Degree	Candela - 0	Candela - 45	Candela - 90
0	3611	3611	3611
5	3120	3115	3105
15	1431	1399	1415
25	809	915	818
35	191	492	188
45	78	97	78
55	26	28	27
65	5	6	6
75	2	2	2
85	1	1	1
90	0	0	0

LTC-3SQD-P-20L35K8NR-DM1-S-BL

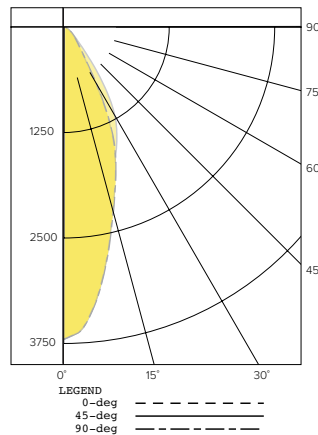
LUMINAIRE DATA

Test No.	R19.00953-01
Description	2000 lm, Narrow, 3500K, 80 CRI
Delivered Lumens	2060
Watts	25.0W
Efficacy	82.4
Mounting	Pendant
Spacing Criterion	0.6
Beam Angle (FWHM)	38

ZONAL LUMEN SUMMARY

Zone	Lumens	% Luminaire
0-40	1861	90.4
0-60	2045	99.3
0-90	2060	100.0
0-180	2060	100.0

POLAR GRAPH



CANDELA DISTRIBUTION

Degree	Candela - 0	Candela - 45	Candela - 90
0	3722	3722	3722
5	3454	3456	3462
15	2243	2200	2258
25	1270	1475	1294
35	338	738	350
45	151	180	157
55	53	57	60
65	7	9	7
75	3	4	3
85	1	1	1
90	0	0	0

LTC-3SQD-P-20L35K8MD-DM1-S-BL

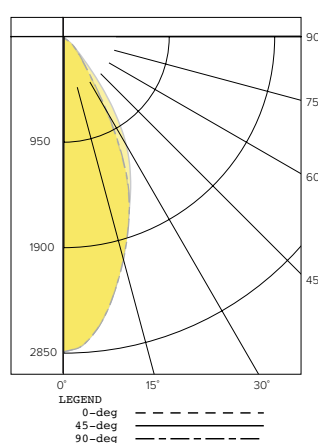
LUMINAIRE DATA

Test No.	R19.00954-01
Description	2000 lm, Medium, 3500K, 80 CRI
Delivered Lumens	2018
Watts	25.0W
Efficacy	80.7
Mounting	Pendant
Spacing Criterion	0.7
Beam Angle (FWHM)	48

ZONAL LUMEN SUMMARY

Zone	Lumens	% Luminaire
0-40	1799	89.2
0-60	2003	99.3
0-90	2018	100.0
0-180	2018	100.0

POLAR GRAPH



CANDELA DISTRIBUTION

Degree	Candela - 0	Candela - 45	Candela - 90
0	2842	2842	2842
5	2728	2727	2728
15	2080	2062	2083
25	1310	1432	1324
35	410	772	422
45	165	202	171
55	58	63	65
65	7	10	8
75	3	4	4
85	1	1	1
90	0	0	0

PHOTOMETRY (CONTINUED)

LTC-3SQD-P-20L35K8WD-DM1-S-BL

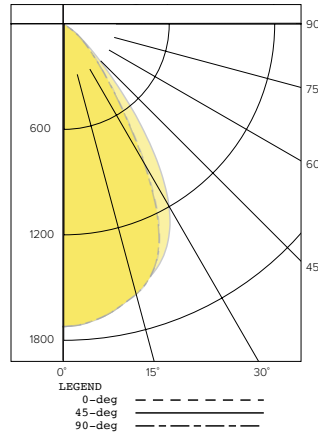
LUMINAIRE DATA

Test No.	R19.01044-01
Description	2000 lm, Wide, 3500K, 80 CRI
Delivered Lumens	1975
Watts	25.0W
Efficacy	78.9
Mounting	Pendant
Spacing Criterion	1.0
Beam Angle (FWHM)	62

ZONAL LUMEN SUMMARY

Zone	Lumens	% Luminaire
0-40	1671	96.3
0-60	1956	99.8
0-90	1975	100.0
0-180	1975	100.0

POLAR GRAPH



CANDELA DISTRIBUTION

Degree	Candela - 0	Candela - 45	Candela - 90
0	1730	1730	1730
5	1713	1711	1711
15	1605	1594	1602
25	1305	1403	1292
35	600	914	580
45	236	304	224
55	87	84	75
65	10	12	9
75	4	5	4
85	1	1	1
90	0	0	0

LTC-3SQD-P-20L35K8XW-DM1-S-BL

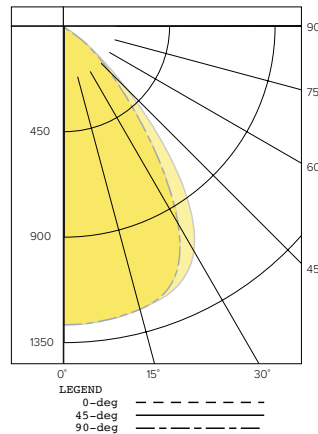
LUMINAIRE DATA

Test No.	R19.00956-01
Description	2000 lm, Extra Wide, 3500K, 80 CRI
Delivered Lumens	1910
Watts	25.0W
Efficacy	76.3
Mounting	Pendant
Spacing Criterion	1.2
Beam Angle (FWHM)	74

ZONAL LUMEN SUMMARY

Zone	Lumens	% Luminaire
0-40	1519	79.5
0-60	1889	98.9
0-90	1910	100.0
0-180	1910	100.0

POLAR GRAPH



CANDELA DISTRIBUTION

Degree	Candela - 0	Candela - 45	Candela - 90
0	1275	1275	1275
5	1273	1273	1273
15	1252	1253	1253
25	1149	1199	1150
35	740	944	735
45	307	412	301
55	102	108	92
65	11	14	10
75	5	5	5
85	1	1	1
90	0	0	0

LUMEN MULTIPLIER

Option	27K8	30K8	35K8	40K8	50K8	27K9	30K9	35K9	40K9
Multiplier	0.94	0.98	1.00	1.01	1.02	0.81	0.84	0.85	0.85

Photometrics are published below at a nominal 3500 Kelvin, 80+ CRI. This table may be used to approximate the lumen values at different Kelvin temperatures. Power consumption would stay the same.

DATE:

LOCATION:

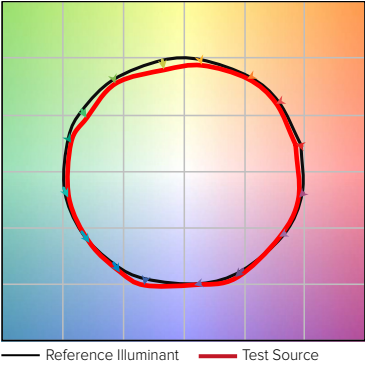
TYPE:

PROJECT:

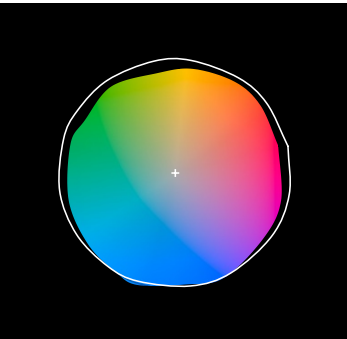
CATALOG #:

TM-30 DATA

COLOR VECTOR GRAPHIC
3500K, 90 CRI

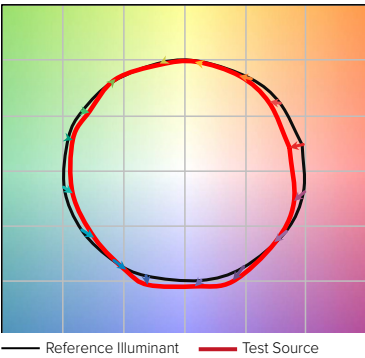


COLOR DISTORTION GRAPHIC
3500K, 90 CRI

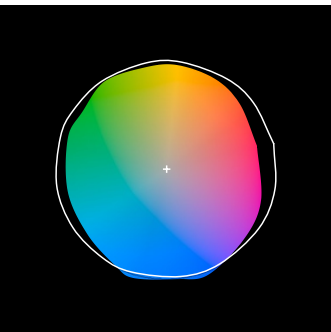


TEST RESULTS - 3500K		
Value	80+ CRI	90+ CRI
R _f	84	88
R _g	95	95
CCT (K)	3411	3419
D _{uv}	0.0015	0.0042
x	0.4120	0.4147
y	0.3974	0.4052
CIE R _a	84	93
CIE R _g	11	62

COLOR VECTOR GRAPHIC
3500K, 80 CRI



COLOR DISTORTION GRAPHIC
3500K, 80 CRI



ELECTRICAL DATA

DRIVER DATA		
Input Voltage	120–277 V	347 V
Input Frequency	50/60 Hz	50/60 Hz
Power Factor	≥0.90	≥0.90
THD	<20%	<20%
EMI Filtering (FCC 47 CFR Part 15)	Class A	Class A

* Values for DM1 option shown, values for other dimming options may vary.

ADDITIONAL INFORMATION

Dimming Compatibility

For more details and recommended dimmer list, see Dimming Compatibility Information on currentlighting.com/prescolite.

DMX

See instruction sheet on currentlighting.com/prescolite for connection & installation information.

Central Inverters

For full fixture output in back-up mode, we recommend you visit currentlighting.com/dual-lite for your Central Lighting Inverter options. Please contact your local Current representative for any assistance with proper sizing and loading of your inverter selection. Central lighting inverters must be ordered separately.