

FEATURES

- 4" architectural LED downlight and wall wash cylinder delivering 600 up to 4000 lm
- Five beam distributions from 0.3 to 1.2 Spacing Criteria
- Quiet reflector appearance with 50° optical cutoff
- 2700K–5000K, 80+ and 90+ CRI options
- Available in Surface, Wall, Pendant, or Cord Mount configurations
- Versatile canopy options for recessed and surface-mounted J-box applications
- Variety of dimming protocol options including 0–10V, DALI, DMX, and Lutron EcoSystem



(Select Models)



(-BAA Option)



(-TAA Option)

CONTROL TECHNOLOGY



SPECIFICATIONS

CONSTRUCTION

- Seamless heavy gauge aluminum cylinder body with a clean appearance
- Available in Surface (S), Wall (W), Pendant (P), or Cord (CM) mounting types
- Canopy options include Conduit Canopy (CC), Power Canopy (PC), Power Conduit Canopy (PCC), or Recessed Mount Driver (RMD), (See Dimensions section for details)
- For S, P, or CM mounting with CC or PCC canopy options, use 4" octagonal junction box (by others)
- All Wall Mount: Die cast aluminum mounting arm allows direct mounting to standard 4" octagonal or square junction box
- Pendant Mount canopy options allow sloped ceiling up to 35° (5° for RMD)
- Select from 4 standard architectural painted finishes, Brushed Aluminum, or specified custom color

OPTICS

- Visually pleasing 50° cutoff to source and source image
- The light distribution is free of distracting bright spots or pixelation and the perimeter has a smooth transition
- Optical grade silicone lens integral to light engine
- High purity spun aluminum reflector, self-flanged
- Large selection of anodized finishes and colors
- Painted cones and flange options available

ELECTRICAL

- Chip-on-board (COB) LED with 2 SDCM
- Multiple CCTs, 80+ or 90+ CRI
- Long LED life: L90 at 55,000 (TM-21)
- Universal voltage 120V–277V driver, 347V optional

ELECTRICAL (CONTINUED)

- UL Class 2, inherent short circuit and overload protection
- Flicker free 0–10V dimming with 1% or <1% performance
- DALI, DMX, and Lutron EcoSystem options
- NX Lighting Controls provides options for standalone and networked functionality with wired or wireless connectivity for NX system deployments
- Lutron Athena control options also available

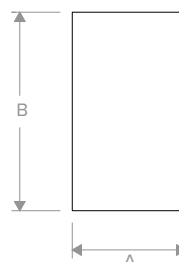
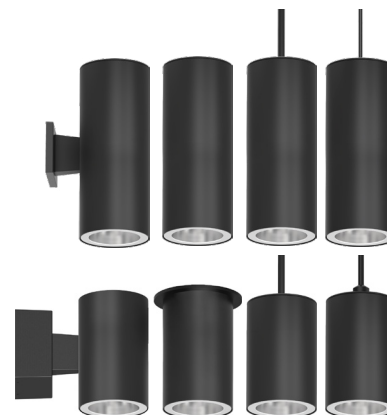
INSTALLATION

- Light Engine/Trim assembly is mechanically secured with torsion springs for ease of installation
- A quick connect is provided for easy maintenance or upgrade
- Recessed Mount Driver (RMD) is accessible from above or below ceiling; assembly mounts with 1/4-20 threaded rod (by others) and requires 6" plenum clearance
- Conduit Canopy options (CC or PCC) allow field selectable conduit entry (up to 4@ 90°) (See Dimensions section)
- Conduit Canopies utilize a patent pending mounting yoke to secure cylinder to the ceiling surface
- Cord can be cut in the field to custom length
- Standard and Custom Pendant lengths available (specify when ordering)

CERTIFICATIONS

- cCSAus certified to UL 1598
- Wall Mount up to 30L (except CC and PCC): Suitable for wet locations
- Pendant Mount up to 30L (except CC or PCC): Suitable for wet locations under covered ceiling

LITEISTRY™



Typical Dimensions and Weights

Lumen Package	"A" Diameter Inches (mm)	"B" Height Inches (mm)	Weight lbs (kg)
06L–15L	5.6 (140)	14 (356)	19.4 (8)
20L–30L	5.6 (140)	14 (356)	19.8 (9)
35L–40L	5.6 (140)	14 (356)	20.3 (9)

See DIMENSIONS section for complete details

CERTIFICATIONS (CONTINUED)

- Surface, Cord Mount, all Wall Wash, and all 35L–40L and all CC and PCC: Suitable for damp locations
- All with EM options: Suitable for Damp location
- EM: Certified under UL924 standard for emergency lighting and power equipment
- EM: Emergency battery packs are California Energy Commission (CEC) Title 20 Compliant
- For -BAA Option: This product meets federal procurement law requirements under the Buy American Act (FAR 52.225-9). [See Buy America\(n\) Solutions](#)
- For -TAA Option: Product configurations meet federal procurement law requirements under the Trade Agreements Act (FAR 52.225-11). [See Buy America\(n\) Solutions](#)

WARRANTY

- 5 year warranty

KEY DATA

Lumen Range	600–4000
Wattage Range	8–52
Efficacy Range (LPW)	90–99*
Reported Life (Hours)	L90 / >55,000
Input Current (mA)	67–433 (120V)

*Based on Specular, 35K, 80 CRI

ORDERING GUIDE

Example: LTC-4RD-CM15WHPCC-15L35K9WD-DM1-SS-WH

CATALOG #

LTC-4RD					
Aperture/Shape/Function		Cylinder Mounting	Canopy Option	Lumen Output	CCT
LTC-4RD	4" Round Downlight Cylinder	S Surface	Refer to chart on Page 3 for available canopy options based on driver/controls selection	06L 600 Lumens ³	27K 2700K
LTC-4RDS	4" Round Shallow Downlight Cylinder	W Wall		10L 1000 Lumens ³	30K 3000K
LTC-4RW	4" Round Wall Wash Cylinder	P Pendant (Standard) Nominal 18" length from cylinder top to ceiling ¹⁰		15L 1500 Lumens ³	35K 3500K
LTC-4RWS	4" Round Shallow Wall Wash Cylinder	P_ Pendant (Custom) Specify length from cylinder top to ceiling in 1 inch increments from 15 to 60 ¹⁰	CC Conduit Canopy ^{3,9}	20L 2000 Lumens ³	40K 4000K
		Cord ⁵	PC Power Canopy ^{3,9}	25L 2500 Lumens ³	50K 5000K ¹
		CM 6ft Clear Cord	PCC Power Conduit Canopy ^{3,9}	30L 3000 Lumens ³	
		CMBL 6ft Black Cord	RMD Recessed Mount Driver ^{3,9}	35L 3500 Lumens ^{3,8}	
		CMWH 6ft White Cord		40L 4000 Lumens ^{3,8}	
		CM15 15ft Clear Cord			
		CM15BL 15ft Black Cord			
		CM15WH 15ft White Cord			

Distribution	Driver Options	Control Options	Voltage	Options	Reflector Finish	Reflector Color
VNR Very Narrow (0.3 SC/20°) ¹²	DM1 0-10V Dimming to 1% ³	NX Lighting Controls	Standard 120-277V	EM 6W Emergency Battery Pack (CEC Title 20 Compliant) with integral test switch and indicator light ¹³	Finish not applicable with painted reflectors (WC or BC)	Standard Clear
NR Narrow (0.4 SC/29°)	DM01 0-10V Dimming to <1% ³	Networked Wireless	34 347V ^{3,6}		S Specular	CG Champagne Gold
MD Medium (0.7 SC/44°)	DMX DMX with RDM Dimming to <0.1% ^{3,7}	NXW NX Networked Wireless Radio Module NXRM2 and Bluetooth Programming, without Sensor ^{2,3,7}			SS Semi-Specular	BL Black
WD Wide (0.9 SC/61°)	DALI DALI Dimming to 1% ³	Networked Wired			MFC American Matte™	LW Light Wheat
XW Extra Wide (1.2 SC/78°)	EDM Lutron Hi-Lume EcoSystem Dimming to 1% ³	NXE NX Wired Enabled, Dual RJ45 SmartPORTS, without Sensor ^{2,3,7}			VS Softglow®	PW Pewter
WW Wall Wash ^{8,14}	DM00 Lutron Athena compatible driver option ^{3,15}	Other Lighting Controls			VSS SoftSheen™	WC Painted White Cone and Flange
		Networked Wireless				BC Painted Black Cone and Flange
		AWNRR Lutron Athena Enabled ^{3,7,15}				

Flange Color Options	Exterior Cylinder Color	Options
Standard matches reflector color	BA Brushed Aluminum ¹¹	BAA Buy American Act (FAR 52.225-9) Compliant
WT White Flange ⁴	BZ Bronze	TAA Trade Agreements Act (FAR 52.225-11) Compliant
BT Black Flange ⁴	BL Matte Black	
	WH Matte White	
	SVR Silver	
	CC_ Custom Color (Specify RAL#, Example: CCRAL1073)	
	TCC_ True Custom Color (Specify description, Example: TCC BABY BLUE, Paint chip must be provided to match)	

Notes:

- 5000K available in 80+ CRI only.
- NX requires DM1 driver option.
- For lumen outputs/configurations available, see chart on page 3.
- WT not needed for WC, BT not needed for BC.
- Cord can be cut in the field to custom length.
- 347V requires DM1 driver; not available with Controls or EM.
- Standard S, P, CM with DMX or controls options require RMD. (PC or PCC highly recommended), see Dimensions section for details.
- 35L and 40L require vented cylinder. Not available with WW.
- See Dimensions section for canopy configuration details.
- Stem length varies by canopy configuration. See Dimensions section for details.
- Canopy and metal accent color for Brushed Aluminum is Black.
- VNR available up to 30L.
- EM for use with DM1 driver option only. Not available with Controls.
- EM not available with WW.
- DM00 must be selected with AWNRR Lutron Athena controls option.

DRIVER/CONTROL OPTION AVAILABILITY

Driver and Control options listed below are available in the configurations and lumen packages as shown.

For LTC-4RD and LTC-4RW (14" cylinder body):

Driver/Control Option	Cylinder Mounting ¹	Canopy Options ²	06L	10L	15L	20L	25L	30L	35L	40L
DM1	0–10V 1%	W	●	●	●	●	●	●	▼	▼
		P/S/CM	●	●	●	●	●	●	▼	▼
DM01	0–10V <1%	W	●	●	●	●	●			
		P/S/CM	●	●	●	●	●			
DALI	DALI 1%	W	●	●	●	●	●			
		P/S/CM	●	●	●	●	●			
DMX	DMX w/ RDM <0.1%	W	●	●	●	●	●	●	▼	▼
		P/S/CM	PC/PCC	●	●	●	●	●	▼	▼
			RMD ⁵	●	●	●	●	●		
			RMD	●	●	●	●	●	▼	▼
EDM	Lutron Hi-Lume EcoSystm 1%	W		●	●	●	●			
		S/P/CM		●	●	●	●			
347V ³	347 Volts (DM1 required)	W	●	●	●	●	●	●		
		P/S/CM	●	●	●	●	●	●		
NXE	NX Wired (DM1 required)	W	●	●	●	●				
		P/S/CM	●	●	●	●				
NXW	NX Wireless (DM1 required)	W	●	●	●	●				
		S	●	●	●	●				
		P/CM	●	●	●	●				
DM00/AWNR	Lutron Athena 0–10V Dim to Off	W	●	●	●	●				
		S	●	●	●	●				
		P/CM	●	●	●	●				
Driver/EM Option	Cylinder Mounting ¹	Canopy Options ²	06L	10L	15L	20L				
DM1 with EM option ⁶	0–10V 1%	W	●	●	●	▼				
		P/S/CM	●	●	●	▼				

For LTC-4RDS and LTC-4RWS Shallow (9" cylinder body):

Driver/Control Option	Cylinder Mounting	Canopy Options	06L	10L	15L	20L	25L
DM1	0-10V 1%	W	●	●	●	●	●
		P/S/CM	●	●	●	●	●
DM01	0-10V <1%	W	●	●	●	●	●
		P/S/CM	●	●	●	●	●
DALI	DALI 1%	W	●	●	●	●	●
		P/S/CM	●	●	●	●	●
DMX	DMX w/ RDM <0.1%	W	●	●	●	●	●
		P/S/CM	●	●	●	●	●
		P/S/CM	RMD	●	●	●	●
EDM	Lutron Hi-Lume EcoSystem 1%	W		●	●	●	●
		P/S/CM		●	●	●	●
347V ³	347 Volts (DM1 required)	W	●	●	●	●	●
		P/S/CM	●	●	●	●	●
NXE	NX Wired (DM1 required)	W	●	●	●	●	
		P/S/CM	PC/PCC	●	●	●	
			RMD	●	●	●	
NXW	NX Wireless (DM1 required)	W	●	●	●	●	
		S	●	●	●	●	
		P/CM	●	●	●	●	
DM00/AWNR	Lutron Athena 0–10V Dim to Off	W	●	●	●	●	
		S	●	●	●	●	
		P/CM	●	●	●	●	

▼ Vented cylinder required, see line art for more details.

¹ See Cylinder Mounting chart.

² See Canopy Options chart and Dimensions section for details.

³ Not available with Controls or EM.



⁴ RMD is Non-IC rated unless noted.

⁵ IC Rated.

⁶ EM option not available with Controls.

Cylinder Mounting		Canopy Options	
S	Surface Mount	(Blank)	Standard Canopy
W	Wall Mount	CC	Conduit Canopy
P	Pendant Mount	PC	Power Canopy
CM	Cord Mount	PCC	Power Conduit Canopy
		RMD	Recessed Mount Driver ⁴

NX LIGHTING CONTROLS

Control Option Ordering Logic & Description			Control Option Functionality								Control Option Components	
			Networkable	Grouping	Scheduling	Occupancy/Motion	Daylight Harvesting	0-10V Dimming	On/Off Control	Bluetooth App Programming		
NX Wireless	NXW	NX Networked Wireless Radio Module NXRM2 and Bluetooth Programming, without Sensor	✓	✓	✓	-	-	✓	✓	✓		NXRM2-H
NX Wired	NXE	NX Wired Dual RJ45 SmartPORTS, without Sensor	✓	✓	✓	-	-	✓	✓	✓ ¹		NXDSP

¹ Requires NXBTC, order separately.

NX LIGHTING CONTROLS APP



The NX Lighting Controls App is a free to use mobile application for programming both an NX Lighting Controls System or Standalone Bluetooth Sensors. The mobile app allows you to configure devices, discover and setup wireless enabled luminaires and program your NX system settings.




Android



Apple iOS

OTHER LIGHTING CONTROLS

Control Option Ordering Logic & Description			Control Option Functionality								Control Option Components	
			Networkable	Grouping	Scheduling	Occupancy/Motion	Daylight Harvesting	0-10V Dimming	On/Off Control	Bluetooth App Programming		
Other	AWNDR	The Athena wireless node is a radio frequency (RF) device that enables simple, digital control of individual light fixtures in an Athena control system. ¹	✓	✓	-	-	-	✓	✓	-		A-WN-D01-RF-WH

¹ Lutron Athena Hub required to enable Networking, Grouping and Scheduling.

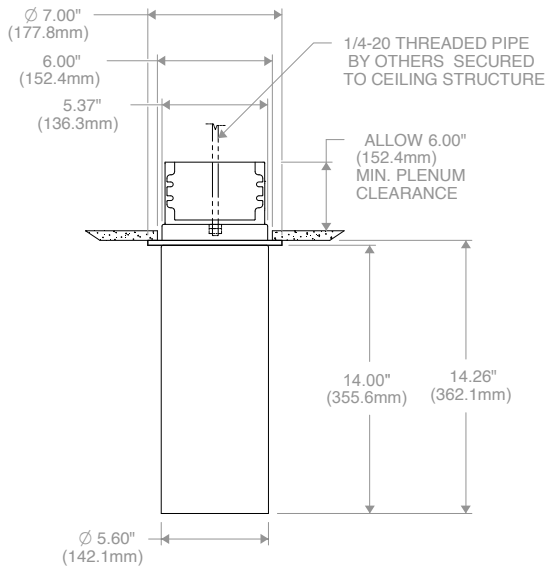
PERFORMANCE DATA TABLE

Performance data provided below is for 3500K, 80 CRI with Specular Clear reflector finish/color

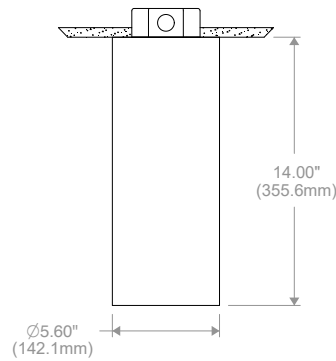
Lumen Package	Nominal Lumens	Distribution	Delivered Lumens	Watts	LPW
06L	600	Very Narrow	691	7.6	91
		Narrow	785	7.8	101
		Medium	726	7.8	93
		Wide	664	7.8	85
		Extra Wide	644	7.8	83
		Open Single Wall Wash	620	7.8	79
10L	1000	Very Narrow	1132	11.8	96
		Narrow	1255	12.0	105
		Medium	1160	12.0	97
		Wide	1062	12.0	89
		Extra Wide	1030	12.0	86
		Open Single Wall Wash	991	12.0	83
15L	1500	Very Narrow	1623	17.2	94
		Narrow	1795	18.6	97
		Medium	1660	18.6	89
		Wide	1519	18.6	82
		Extra Wide	1474	18.6	79
		Open Single Wall Wash	1418	18.6	76
20L	2000	Very Narrow	2032	22.4	91
		Narrow	2238	22.5	99
		Medium	2152	22.5	96
		Wide	2059	22.5	92
		Extra Wide	2028	22.5	90
		Open Single Wall Wash	1989	22.7	87
25L	2500	Very Narrow	2447	28.6	86
		Narrow	2985	27.8	107
		Medium	2760	27.8	99
		Wide	2526	27.8	91
		Extra Wide	2451	27.8	88
		Open Single Wall Wash	2357	27.8	85
30L	3000	Very Narrow	2855	35.9	80
		Narrow	3583	34.6	104
		Medium	3313	34.6	96
		Wide	3032	34.6	88
		Extra Wide	2941	34.6	85
		Open Single Wall Wash	2829	34.6	82
35L	3500	Narrow	4280	42.9	100
		Medium	3957	42.9	92
		Wide	3622	42.9	84
		Extra Wide	3514	42.9	82
		Open Single Wall Wash	3380	42.9	79
40L	4000	Narrow	4885	51.5	95
		Medium	4517	51.5	88
		Wide	4134	51.5	80
		Extra Wide	4011	51.5	78
		Open Single Wall Wash	3858	51.5	75

DIMENSIONS

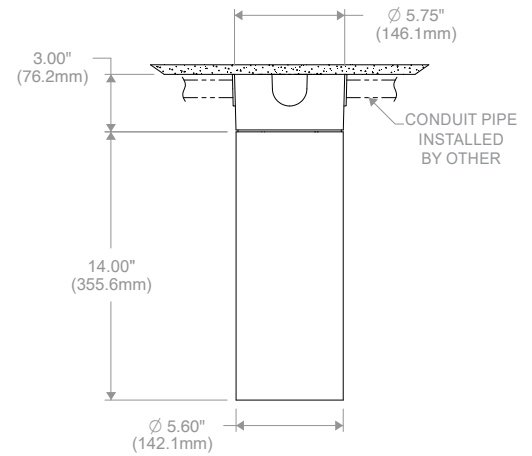
**LTC-4RD
(14" CYLINDER BODY)
SURFACE (S)**



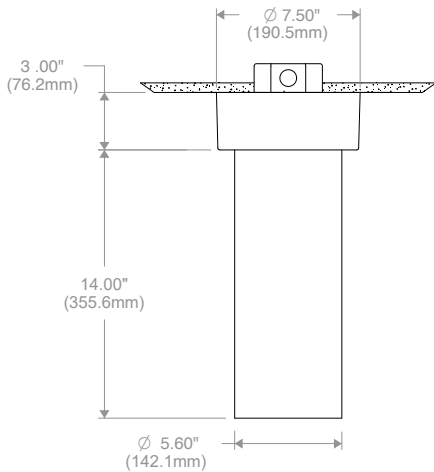
**Surface
Recessed Mount Driver
SRMD**



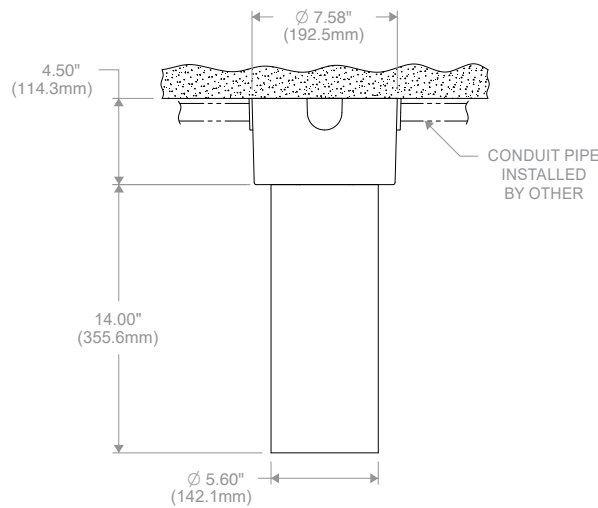
**Surface
Standard Canopy
S**



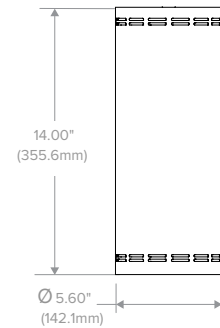
**Surface
Conduit Canopy
SCC**



**Surface
Power Canopy
SPC**



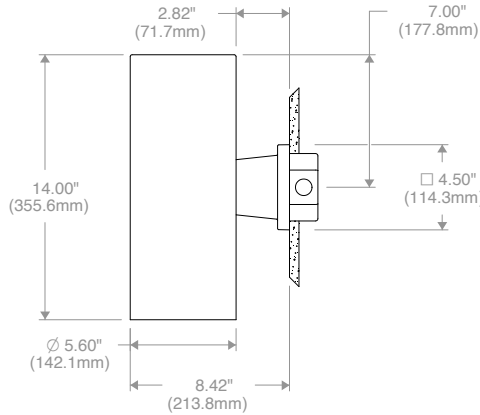
**Surface
Power Conduit Canopy
SPCC**



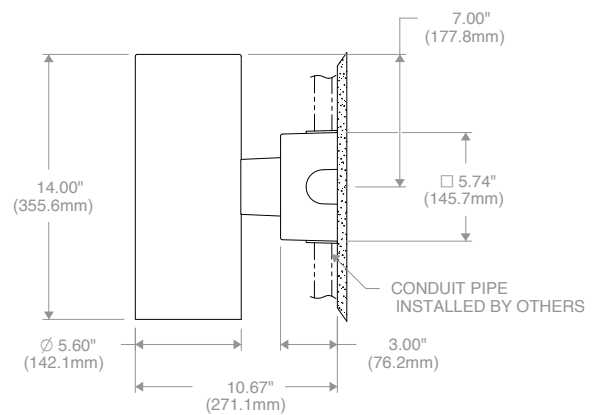
**Vented Detail view
All 35L and 40L
(All Mountings)**

DIMENSIONS

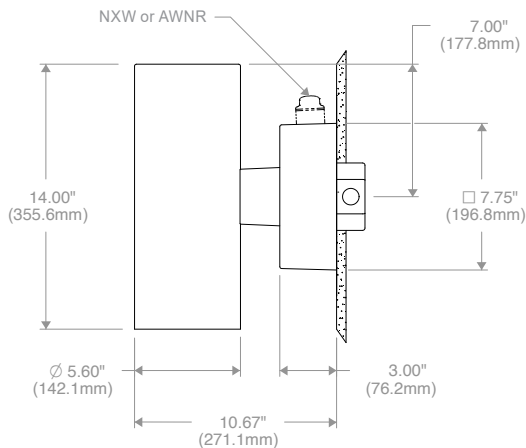
**LTC-4RD
(14" CYLINDER BODY)
WALL (W)**



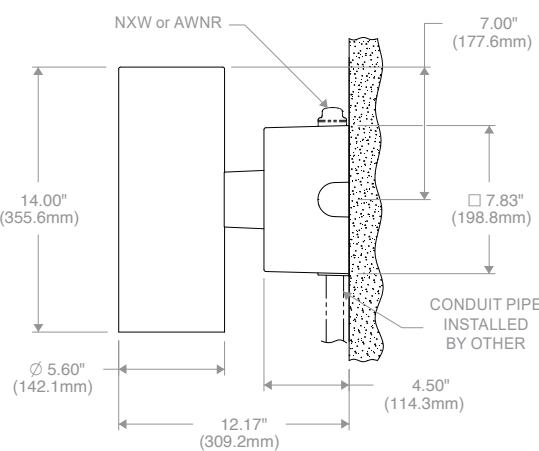
**Wall
(Standard Canopy)
W**



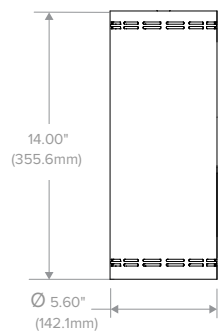
**Wall
Conduit Canopy
WCC**



**Wall
Power Canopy
WPC**



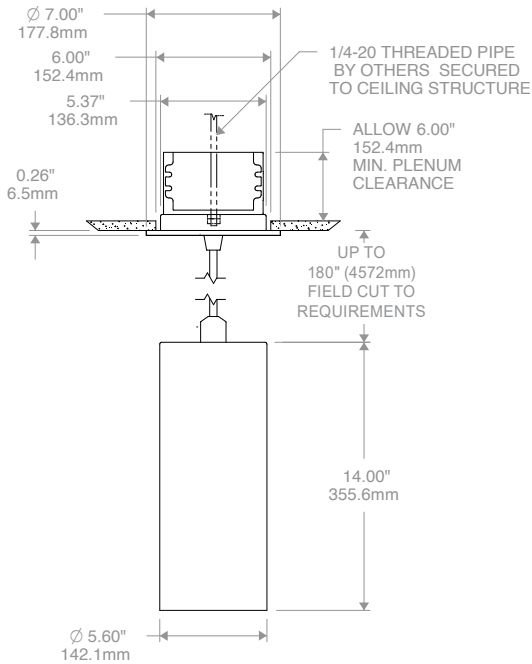
**Wall
Power Conduit Canopy
WPCC**



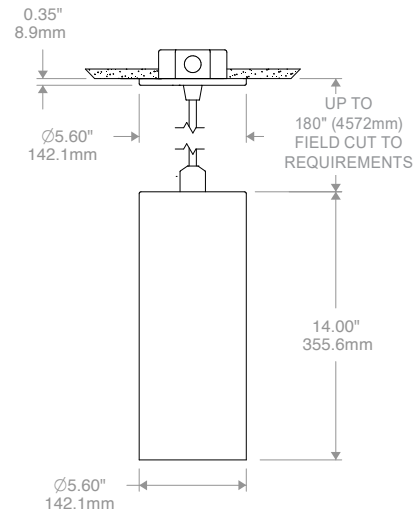
**Vented Detail view
All 35L and 40L
(All Mountings)**

DIMENSIONS

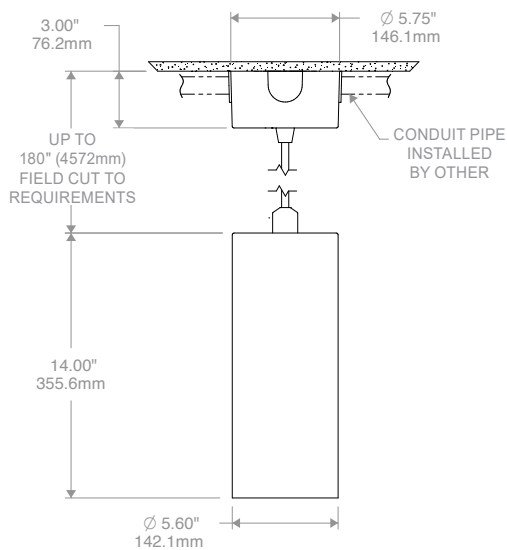
**LTC-4RD
(14" CYLINDER BODY)
CORD (CM)**



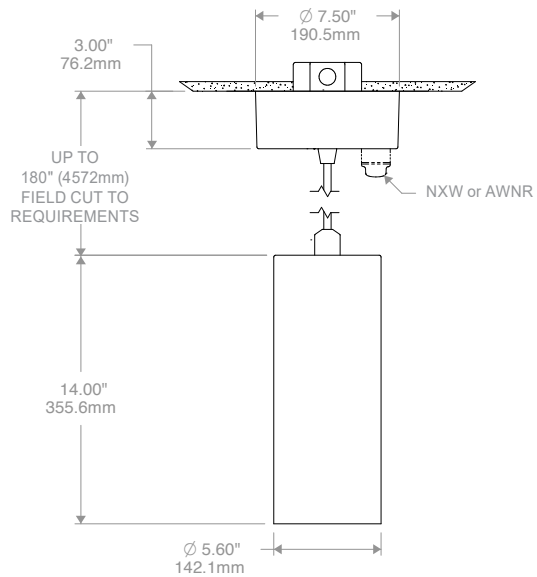
**Cord
Recessed Mount Driver
CMRMD**



**Cord
(Standard Canopy)
CM**



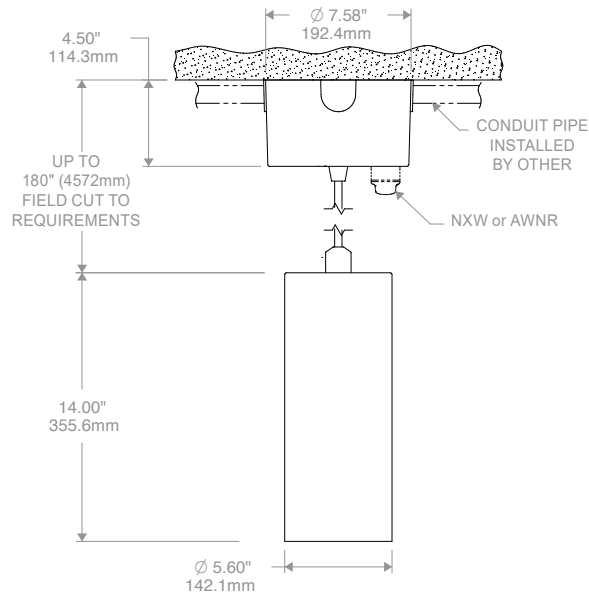
**Cord
Conduit Canopy
CMCC**



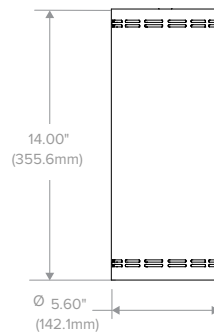
**Cord
Power Canopy
CMPC**

DIMENSIONS

**LTC-4RD
(14" CYLINDER BODY)
CORD (CM)**



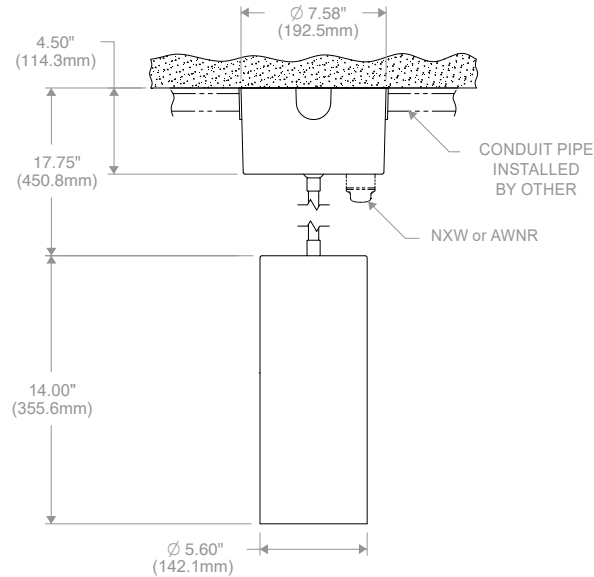
**Cord
Power Conduit Canopy
CMPCC**



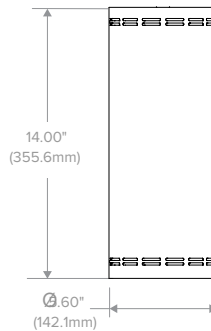
**Vented Detail view
All 35L and 40L
(All Mountings)**

DIMENSIONS

**LTC-4RD
(14" CYLINDER BODY)
PENDANT (P)**



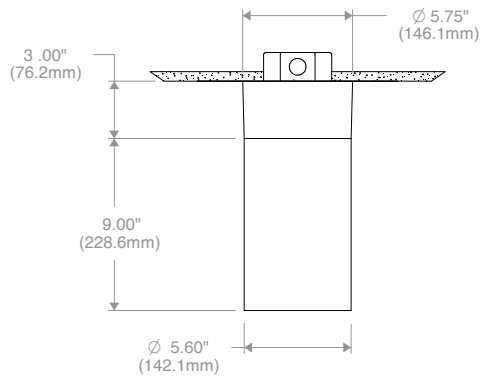
**Pendant
Power Conduit Canopy
PPCC**



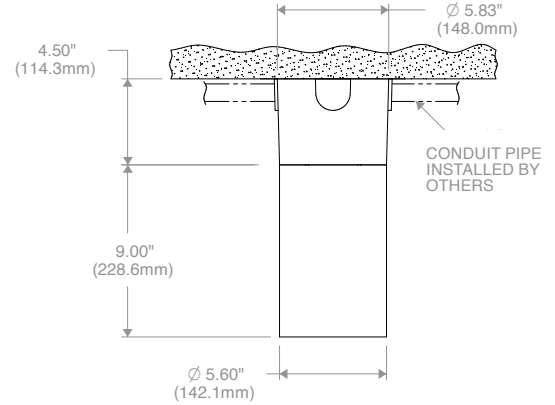
**Vented Detail view
All 35L and 40L
(All Mountings)**

DIMENSIONS

LTC-4RDS (9" CYLINDER BODY) SURFACE (S)

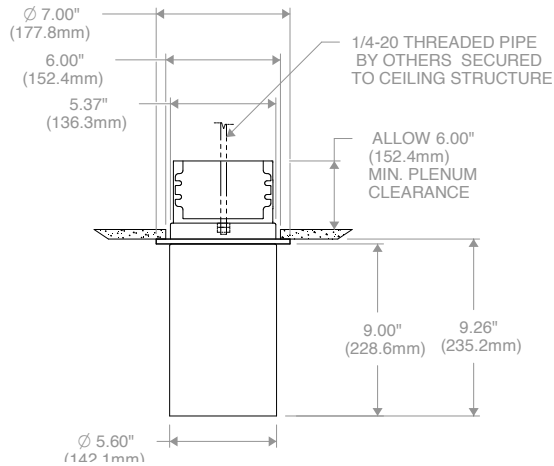


**Surface
Power Canopy
SPC**

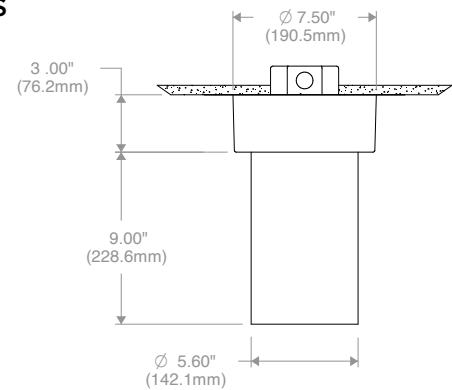


**Surface
Power Conduit Canopy
SPCC**

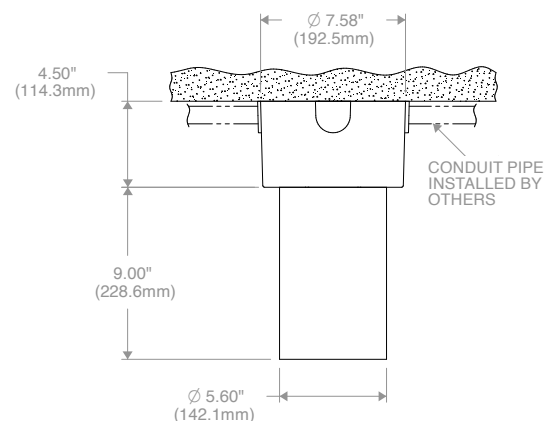
(FOR DMX OR CONTROLS OPTIONS ONLY)



**Surface
Recessed Mount Driver
SRMD**



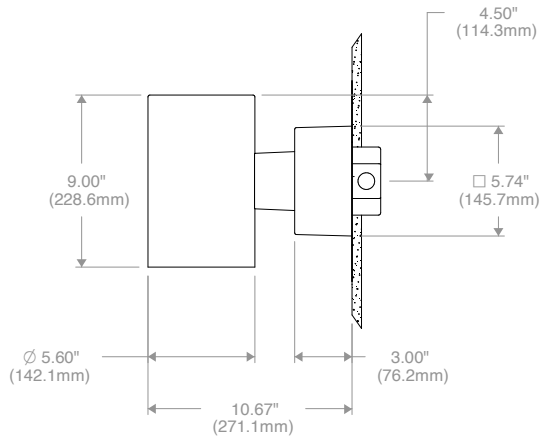
**Surface
Power Canopy
SPC**



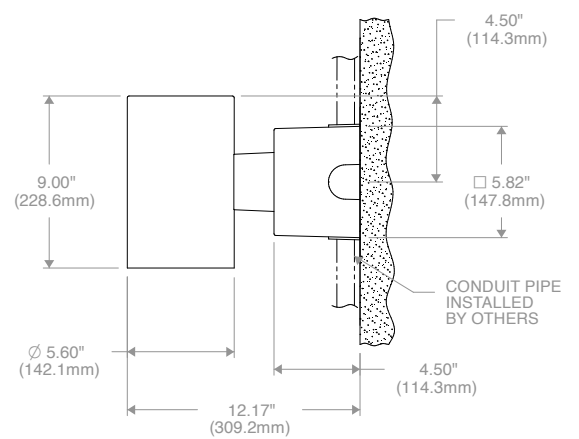
**Surface
Power Conduit Canopy
SPCC**

DIMENSIONS

**LTC-4RDS
(9" CYLINDER BODY)
WALL (W)**

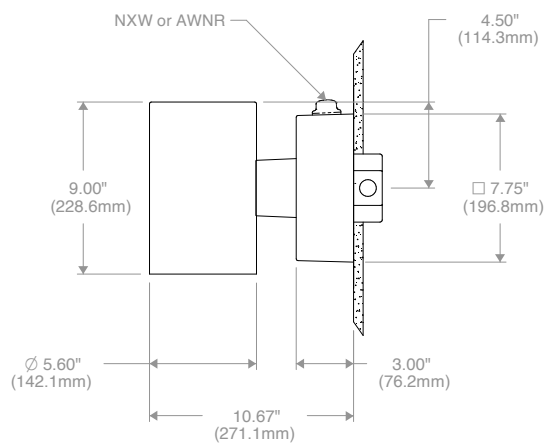


**Wall
Power Canopy
WPC**

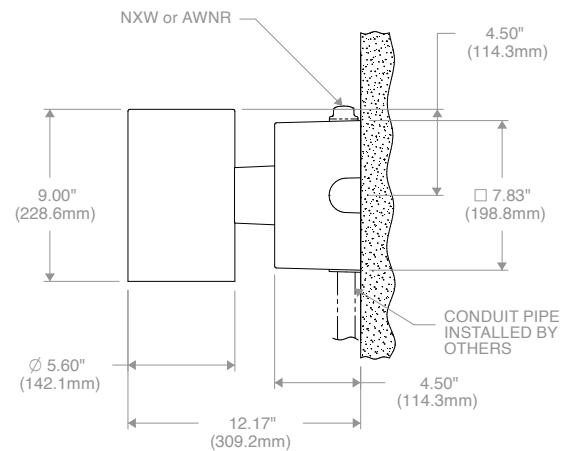


**Wall
Power Conduit Canopy
WPCC**

(FOR DMX OR CONTROLS OPTIONS ONLY)



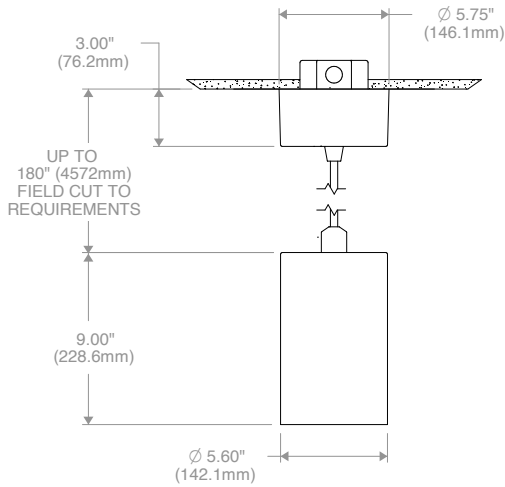
**Wall
Power Canopy
WPC**



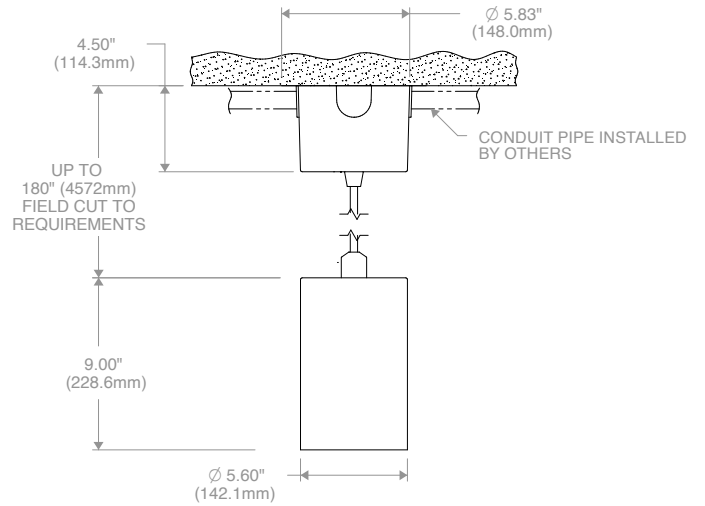
**Wall
Power Conduit Canopy
WPCC**

DIMENSIONS

**LTC-4RDS
(9" CYLINDER BODY)
CORD MOUNT (CM)**

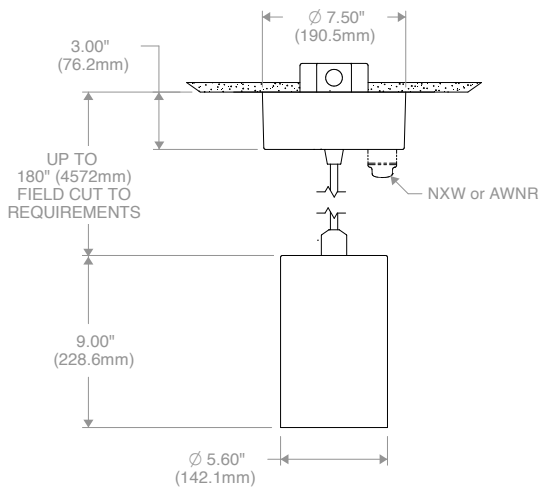


**Cord
Conduit Canopy
CMCC**

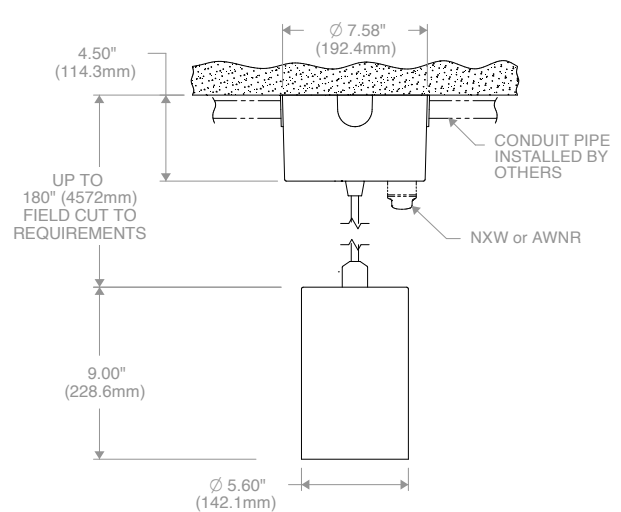


**Cord
Power Canopy
CMPC**

(FOR DMX OR CONTROLS OPTIONS ONLY)



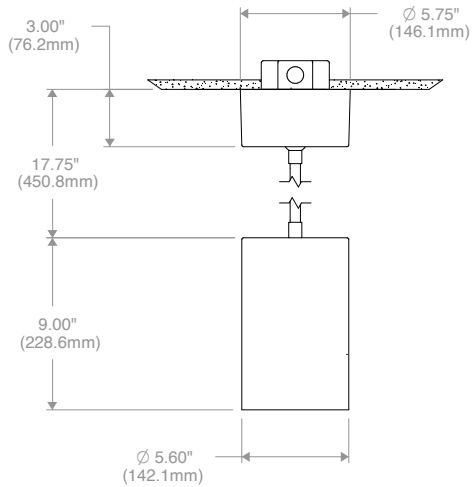
**Cord
Conduit Canopy
CMCC**



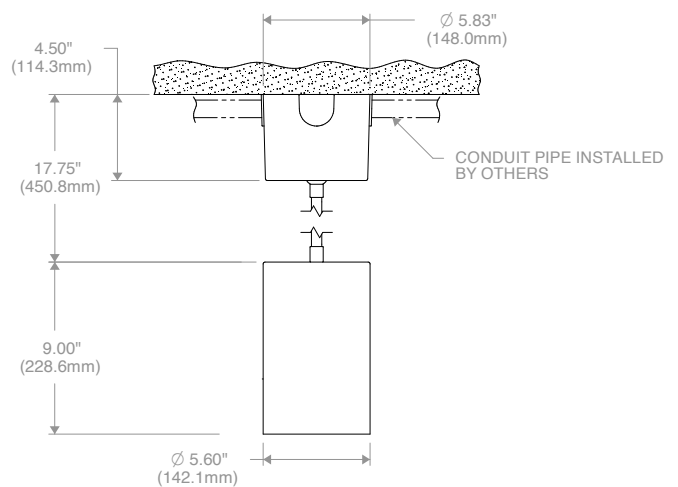
**Cord
Power Canopy
CMPC**

DIMENSIONS

**LTC-4RDS
(9" CYLINDER BODY)
PENDANT (P)**

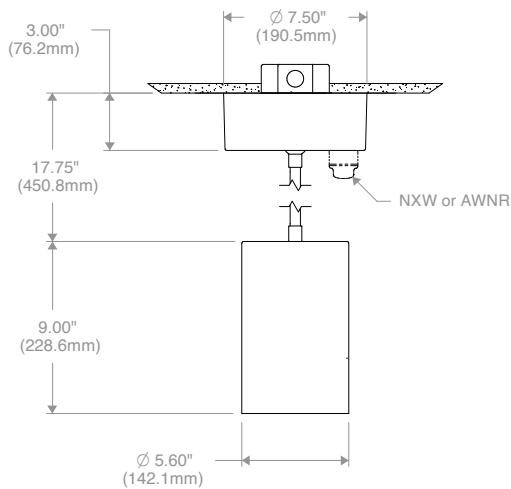


**Pendant
Conduit Canopy
PCC**

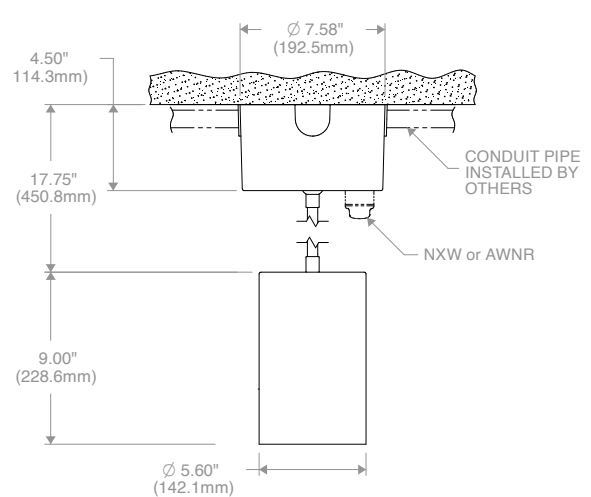


**Pendant
Power Canopy
PPC**

(FOR DMX OR CONTROLS OPTIONS ONLY)



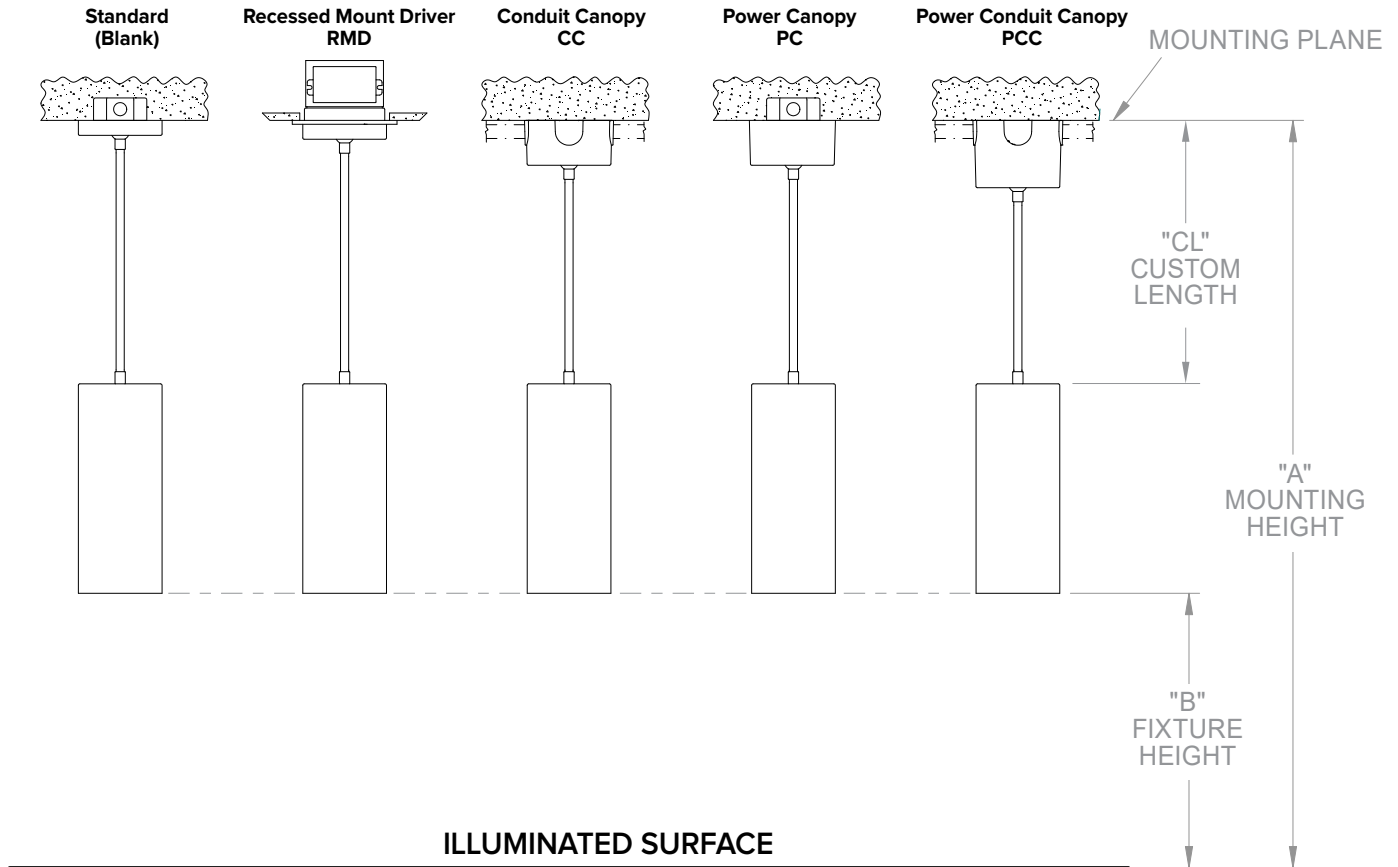
**Pendant
Conduit Canopy
PCC**



**Pendant
Power Canopy
PPC**

DIMENSIONS

PENDANT CUSTOM LENGTH



Custom Length (CL) = Mounting Height (A) - Fixture Height (B) - Cylinder Body Length

Ordering Examples:

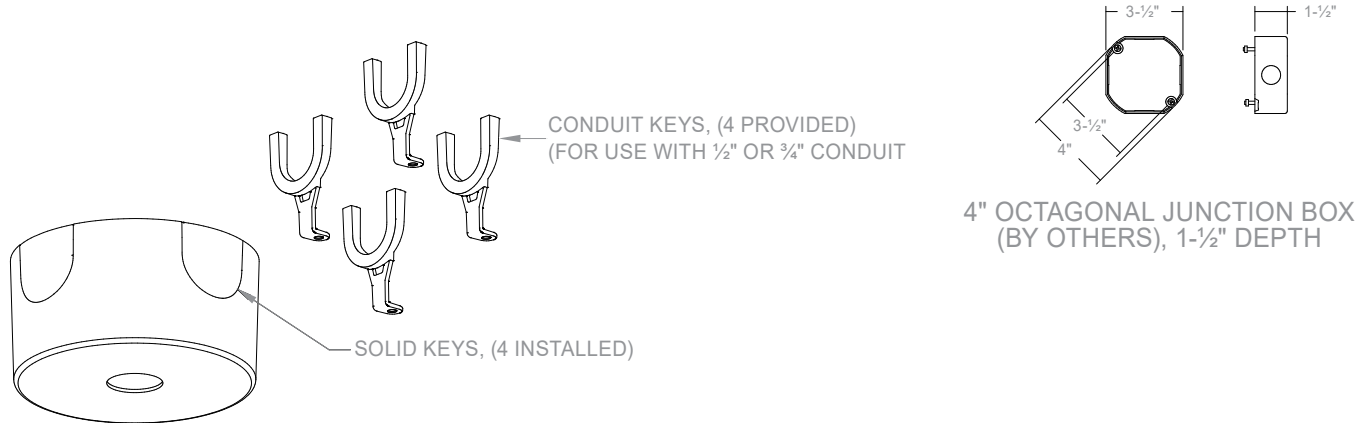
A (120") - B (72") - 14" = 34" Custom Length
LTC-4RD-P34

A (120") - B (72") - 9" = 39" Custom Length
LTC-4RDS-P39

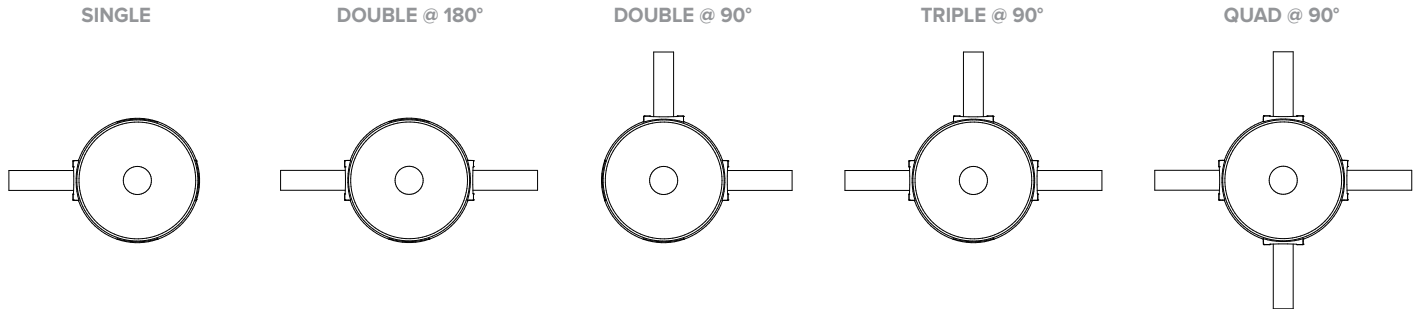
DIMENSIONS

CONDUIT CANOPY DETAILS

CC and PCC Conduit Canopy options come standard with (4) Solid Keys installed and (4) Conduit Keys provided.
Accommodates a 4" octagonal junction box with 1-1/2" depth (by others).



CONDUIT MOUNTING EXAMPLES - FIELD INTERCHANGEABLE



PHOTOMETRY

LTC-4RD-P-20L35K8VNR-DM1-S-BL

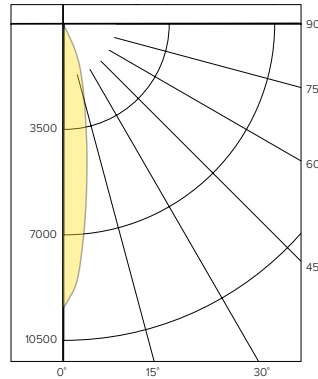
LUMINAIRE DATA

Test No.	R20.01331-C01
Description	2000 lm, Very Narrow, 3500K, 80 CRI
Delivered Lumens	2032
Watts	22.4W
Efficacy	91
Mounting	Pendant
Spacing Criterion	0.3
Beam Angle (FWHM)	20

ZONAL LUMEN SUMMARY

Zone	Lumens	% Luminaire
0-40	2011	99.0
0-60	2032	100.0
0-90	2032	100.0
0-180	2032	100.0

POLAR GRAPH



CANDELA DISTRIBUTION

Degree	Candela
0	9388
5	7360
15	2780
25	1073
35	198
45	20
55	0
65	0
75	0
85	0
90	0

LUMINANCE DATA*

Vertical Angle	Average
45°	3489
55°	0
65°	0
75°	0
85°	0

*Candela/Square Meter

LTC-4RD-P-20L35K8NR-DM1-S-BL

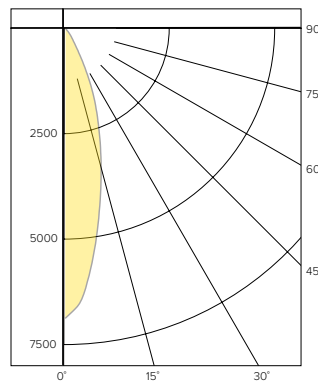
LUMINAIRE DATA

Test No.	R19.00532-01
Description	2000 lm, Narrow, 3500K, 80 CRI
Delivered Lumens	2238
Watts	22.5W
Efficacy	99.3
Mounting	Pendant
Spacing Criterion	0.4
Beam Angle (FWHM)	29

ZONAL LUMEN SUMMARY

Zone	Lumens	% Luminaire
0-40	2208	98.6
0-60	2237	99.9
0-90	2238	100.0
0-180	2238	100.0

POLAR GRAPH



CANDELA DISTRIBUTION

Degree	Candela
0	6877
5	6035
15	3284
25	1313
35	260
45	26
55	3
65	1
75	0
85	0
90	0

LUMINANCE DATA*

Vertical Angle	Average
45°	4535
55°	645
65°	292
75°	0
85°	0

*Candela/Square Meter

LTC-4RD-P-20L35K8MD-DM1-S-BL

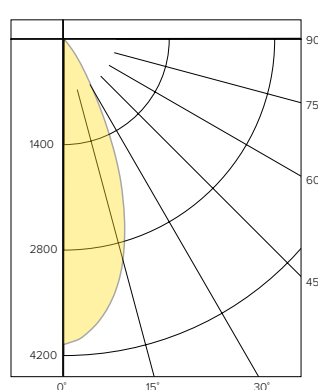
LUMINAIRE DATA

Test No.	R19.00533-01
Description	2000 lm, Medium, 3500K, 80 CRI
Delivered Lumens	2152
Watts	22.5W
Efficacy	95.6
Mounting	Pendant
Spacing Criterion	0.7
Beam Angle (FWHM)	44

ZONAL LUMEN SUMMARY

Zone	Lumens	% Luminaire
0-40	2113	98.2
0-60	2151	99.9
0-90	2152	100.0
0-180	2152	100.0

POLAR GRAPH



CANDELA DISTRIBUTION

Degree	Candela
0	4053
5	3893
15	3037
25	1493
35	366
45	34
55	3
65	1
75	0
85	0
90	0

LUMINANCE DATA*

Vertical Angle	Average
45°	5931
55°	645
65°	292
75°	0
85°	0

*Candela/Square Meter

PHOTOMETRY CONTINUED

LTC-4RD-P-20L35K8WD-DM1-S-BL

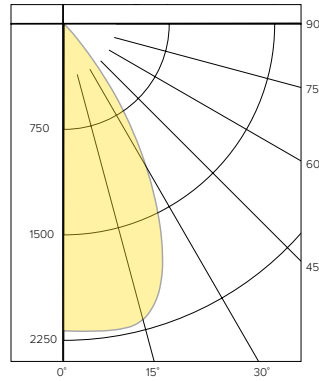
LUMINAIRE DATA

Test No.	R19.00534-01
Description	2000 lm, Wide, 3500K, 80 CRI
Delivered Lumens	2059
Watts	22.5W
Efficacy	91.6
Mounting	Pendant
Spacing Criterion	0.9
Beam Angle (FWHM)	61

ZONAL LUMEN SUMMARY

Zone	Lumens	% Luminaire
0-40	1983	96.3
0-60	2056	99.8
0-90	2059	100.0
0-180	2059	100.0

POLAR GRAPH



CANDELA DISTRIBUTION

Degree	Candela
0	2201
5	2210
15	2051
25	1504
35	692
45	169
55	10
65	3
75	1
85	0
90	0

LUMINANCE DATA*

Vertical Angle	Average
45°	11338
55°	1075
65°	584
75°	477
85°	0

*Candela/Square Meter

LTC-4RD-P-20L35K8XW-DM1-S-BL

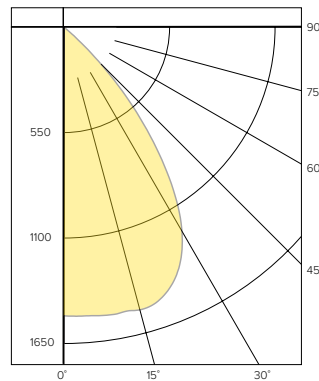
LUMINAIRE DATA

Test No.	R19.00535-01
Description	2000 lm, Extra Wide, 3500K, 80 CRI
Delivered Lumens	2028
Watts	22.5W
Efficacy	90.2
Mounting	Pendant
Spacing Criterion	1.2
Beam Angle (FWHM)	78

ZONAL LUMEN SUMMARY

Zone	Lumens	% Luminaire
0-40	1794	88.5
0-60	2025	99.8
0-90	2028	100.0
0-180	2028	100.0

POLAR GRAPH



CANDELA DISTRIBUTION

Degree	Candela
0	1235
5	1252
15	1392
25	1454
35	1010
45	256
55	6
65	2
75	1
85	0
90	0

LUMINANCE DATA*

Vertical Angle	Average
45°	44656
55°	1290
65°	584
75°	231
85°	477

*Candela/Square Meter

LUMEN MULTIPLIER

Option	27K8	30K8	35K8	40K8	50K8	27K9	30K9	35K9	40K9
Multiplier	0.94	0.98	1.00	1.01	1.02	0.81	0.84	0.85	0.85

Photometrics are published below at a nominal 3500 Kelvin, 80+ CRI. This table may be used to approximate the lumen values at different Kelvin temperatures. Power consumption would stay the same.

DATE:

LOCATION:

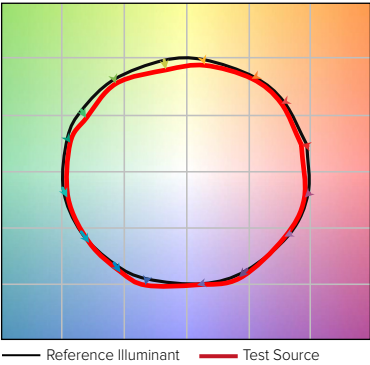
TYPE:

PROJECT:

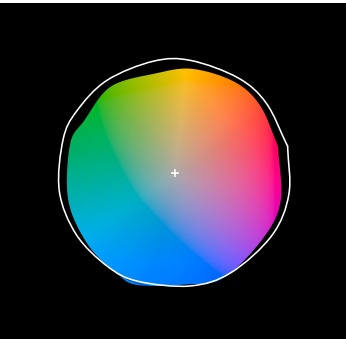
CATALOG #:

TM-30 DATA

COLOR VECTOR GRAPHIC
3500K, 90 CRI

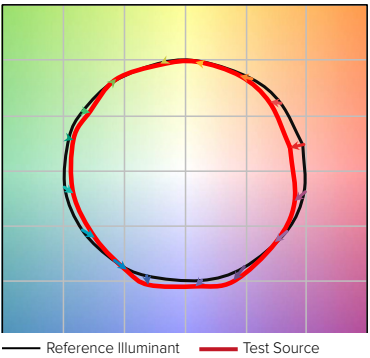


COLOR DISTORTION GRAPHIC
3500K, 90 CRI

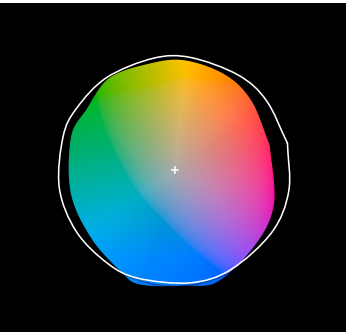


TEST RESULTS - 3500K		
Value	80+ CRI	90+ CRI
R _f	84	88
R _g	95	95
CCT (K)	3411	3419
D _{uv}	0.0015	0.0042
x	0.4120	0.4147
y	0.3974	0.4052
CIE R _a	84	93
CIE R _g	11	62

COLOR VECTOR GRAPHIC
3500K, 80 CRI



COLOR DISTORTION GRAPHIC
3500K, 80 CRI



ELECTRICAL DATA

DRIVER DATA		
Input Voltage	120–277 V	347 V
Input Frequency	50/60 Hz	50/60 Hz
Power Factor	≥0.90	≥0.90
THD	<20%	<20%
EMI Filtering (FCC 47 CFR Part 15)	Class A	Class A

* Values for DMI option shown, values for other dimming options may vary.

ADDITIONAL INFORMATION

Dimming Compatibility

For more details and recommended dimmer list, see Dimming Compatibility Information on currentlighting.com/prescolite.

DMX

See instruction sheet on currentlighting.com/prescolite for connection & installation information.

Central Inverters

For full fixture output in back-up mode, we recommend you visit currentlighting.com/dual-lite for your Central Lighting Inverter options. Please contact your local Current representative for any assistance with proper sizing and loading of your inverter selection. Central lighting inverters must be ordered separately.

Lumen Output in Emergency Mode

To determine the lumen output in emergency mode multiply the battery pack wattage by the fixture lumens per watt (LPW).

For example, 6W x 120 LPW = 720 lumens in emergency mode.