

FEATURES

- 4" architectural LED downlight cylinder delivering 600 up to 2000 lm
- Five beam distributions from 0.4 to 1.2 Spacing Criteria
- Quiet reflector appearance with 50° optical cutoff
- 2700K–5000K, 80+ and 90+ CRI options
- Available in Surface, Wall, Pendant or Cable/Cord Mount configurations
- Versatile canopy options for recessed and surface-mounted J-box applications
- Variety of dimming protocol options including 0–10V, DALI, DMX, and Lutron EcoSystem



CONTROL TECHNOLOGY



SPECIFICATIONS

CONSTRUCTION

- Seamless heavy gauge aluminum cylinder body with a clean appearance
- Available in Surface (S), Wall (W), Pendant (P), or Cable/Cord (CM) mounting types
- Canopy options include Conduit Canopy (CC), Power Canopy (PC), Power Conduit Canopy (PCC), or Recessed Mount Driver (RMD), (See Dimensions section for details)
- For S, P, or CM mounting with CC or PCC canopy options, use 4" octagonal junction box (by others)
- All Wall Mount: Die cast aluminum mounting arm allows direct mounting to standard 4" octagonal or square junction box
- Pendant Mount canopy options allow sloped ceiling up to 35° (5° for RMD)
- Select from 4 standard architectural painted finishes, Brushed Aluminum, or specified custom color

OPTICS

- Visually pleasing 50° cutoff to source and source image
- The light distribution is free of distracting bright spots or pixelation and the perimeter has a smooth transition
- Optical grade silicone lens integral to light engine
- High purity four panel aluminum reflector, self-flanged
- Large selection of anodized finishes and colors
- Painted cones and flange options available

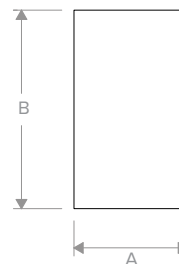
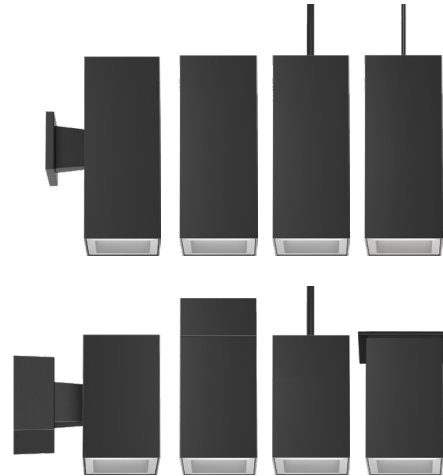
ELECTRICAL

- Chip-on-board LED with 2 SDCM
- Multiple CCTs, 80+ or 90+ CRI
- Long LED life: L90 at >55,000 (TM-21)
- Universal voltage 120V–277V driver, 347V optional
- UL Class 2, inherent short circuit and overload protection
- Flicker free 0–10V dimming with 1% or < 1% performance
- DALI, DMX, and Lutron EcoSystem options
- NX Lighting Controls provides options for standalone and networked functionality with wired or wireless connectivity for NX system deployments
- Lutron Athena control options also available

INSTALLATION

- Light Engine/Trim assembly is mechanically secured with torsion springs for ease of installation
- A quick connect is provided for easy maintenance or upgrade
- Recessed Mount Driver (RMD) is accessible from above or below ceiling; assembly mounts with 1/4-20 threaded rod (by others) and requires 6" plenum clearance
- Conduit Canopy options (CC or PCC) allow field selectable conduit entry (up to 4@ 90°) (See Dimensions section)
- Conduit Canopies utilize a patent pending mounting yoke to secure cylinder to the ceiling surface
- Cord can be cut in the field to custom length
- Standard and Custom Pendant lengths available (specify when ordering)

LITEISTRY™



Typical Dimensions and Weights			
Lumen Package	"A" Width (SQ) Inches (mm)	"B" Height Inches (mm)	Weight lbs (kg)
06L–15L	5.6 (140)	14 (356)	20.7 (9.4)
20L–30L	5.6 (140)	14 (356)	21.1 (9.6)
35L–40L	5.6 (140)	14 (356)	21.5 (9.8)

See DIMENSIONS section for complete details

CERTIFICATIONS

- cCSAus certified to UL 1598
- Wall Mount up to 30L (except CC or PCC): Suitable for wet locations
- Pendant Mount up to 30L (except CC or PCC): Suitable for wet locations under covered ceiling
- Surface, Cord Mount, all 35L–40L and all CC and PCC: Suitable for damp locations
- All with EM options: Suitable for Damp location
- EM: Certified under UL924 standard for emergency lighting and power equipment
- EM: Emergency battery packs are California Energy Commission (CEC) Title 20 Compliant
- For -BAA Option: This product meets federal procurement law requirements under the Buy American Act (FAR 52.225-9). [See Buy America\(n\) Solutions](#)
- For -TAA Option: Product configurations meet federal procurement law requirements under the Trade Agreements Act (FAR 52.225-11). [See Buy America\(n\) Solutions](#)

WARRANTY

- 5 year warranty

KEY DATA	
Lumen Range	600–4000
Wattage Range	8–52
Efficacy Range (LPW)	89–99*
Reported Life (Hours)	L90 / >55,000
Input Current Range (mA)	67–433 (120V)

*Based on Specular, 35K, 80 CRI

ORDERING GUIDE

Example: LTC-4SQD-CM15WHPCC-15L35K9WD-DM1-SS-WH

CATALOG #

LTC-4SQD					
Aperture/Shape/Function		Cylinder Mounting	Canopy Option	Lumen Output	CCT
LTC-4SQD 4" Square Downlight Cylinder		S Surface	Refer to chart on Page 3 for available canopy options based on driver/controls selection	06L 600 Lumens ³	27K 2700K
LTC-4SQDS 4" Square Shallow Downlight Cylinder		W Wall		10L 1000 Lumens ³	30K 3000K
		P Pendant (Standard) Nominal 18" length from cylinder top to ceiling ¹⁰	Standard Canopy ^{3,9}	15L 1500 Lumens ³	35K 3500K
		P_ Pendant (Custom) Specify length from cylinder top to ceiling in 1 inch increments from 15 to 60 ¹⁰	CC Conduit Canopy ^{3,9}	20L 2000 Lumens ³	40K 4000K
			PC Power Canopy ^{3,9}	25L 2500 Lumens ³	50K 5000K ¹
			PCC Power Conduit Canopy ^{3,9}	30L 3000 Lumens ³	
			RMD Recessed Mount Driver ^{3,9}	35L 3500 Lumens ^{3,8}	
				40L 4000 Lumens ^{3,8}	
		Cord ⁵			
		CM 6ft Clear Cord			
		CMBL 6ft Black Cord			
		CMWH 6ft White Cord			
		CM15 15ft Clear Cord			
		CM15BL 15ft Black Cord			
		CM15WH 15ft White Cord			

Distribution		Driver Options	Control Options	Voltage	Options	Reflector Finish	Reflector Color
VNR Very Narrow (0.4 SC/23°) ¹²		DM1 0–10V Dimming to 1% ³	NX Lighting Controls	Standard 120–277V	EM 6W Emergency Battery Pack (CEC Title 20 Compliant) with integral test switch and indicator light ¹³	Finish not applicable with painted reflectors (WC or BC)	Standard Clear
NR Narrow (0.6 SC/37°)		DM01 0–10V Dimming to <1% ³	Networked Wireless	34 347V ^{3,6}		CG Champagne Gold	
MD Medium (0.8 SC/46°)		DMX DMX with RDM dimming to <0.1% ^{3,7}	NXW NX Networked Wireless Radio Module NXRM2 and Bluetooth Programming, without Sensor ^{2,3,7}			S Specular	BL Black
WD Wide (1.0 SC/60°)		DALI DALI Dimming to 1% ³	Networked Wired			SS Semi-Specular	LW Light Wheat
XW Extra Wide (1.2 SC/69°)		EDM Lutron Hi-Lume EcoSystem Dimming to 1% ³	NXE NX Wired Enabled, Dual RJ45 SmartPORTS, without Sensor ^{2,3,7}			VS Softglow®	PW Pewter
		DM00 Lutron Athena compatible driver option ^{3,14}	Other Lighting Controls				WC Painted White Cone and Flange
			Networked Wireless				BC Painted Black Cone and Flange
			AWNRR Lutron Athena Enabled ^{3,7,14}				

Flange Color Options		Exterior Cylinder Color	Options
Standard matches reflector color		BA Brushed Aluminum ¹¹	BAA Buy American Act (FAR 52.225-9) Compliant
WT White Flange ⁴		BZ Bronze	TAA Trade Agreements Act (FAR 52.225-11) Compliant
BT Black Flange ⁴		BL Matte Black	
		WH Matte White	
		SVR Silver	
		CC_ Custom Color (Specify RAL#, Example: CCRAL1073)	
		TCC_ True Custom Color (Specify description, Example: TCC BABY BLUE, Paint chip must be provided to match)	

Notes:

- 5000K is available in 80+ CRI only.
- NX requires DM1 driver option.
- For lumen outputs/configurations available, see chart on page 3.
- WT not needed for WC; BT not needed for BC.
- Cord can be cut in the field to custom length.
- 347V available for 06L–30L; requires DM1 driver; not available with Controls, EM, EMR, DTS, GTD or F.
- Standard S, P, CM with DMX or controls options require RMD. (PC or PCC highly recommended), see Dimensions section for details.
- 35L and 40L require vented cylinder.
- See Dimensions section for canopy configuration details.
- Stem length varies by canopy configuration. See Dimensions section for details.
- Canopy and metal accent color for Brushed Aluminum is Black.
- VNR available up to 30L.
- EM for use with DM1 driver option only.
- DM00 must be selected with AWNRR Lutron Athena controls option.

DRIVER/CONTROL OPTION AVAILABILITY

Driver and Control options listed below are available in the configurations and lumen packages as shown.

For LTC-4SQD (14" cylinder body):

Driver/Control Option	Cylinder Mounting ¹	Canopy Options ²	06L	10L	15L	20L	25L	30L	35L	40L
DM1	0–10V 1%	W	Standard/CC	●	●	●	●	●	▼	▼
		P/S/CM	Standard/CC	●	●	●	●	●	▼	▼
DM01	0–10V <1%	W	Standard/CC	●	●	●	●			
		P/S/CM	Standard/CC	●	●	●	●			
DALI	DALI 1%	W	Standard/CC	●	●	●	●			
		P/S/CM	Standard/CC	●	●	●	●			
DMX	DMX w/ RDM <0.1%	W	Standard/CC	●	●	●	●	●	▼	▼
		P/S/CM	PC/PCC	●	●	●	●	●	▼	▼
			RMD ⁵	●	●	●	●	●		
			RMD	●	●	●	●	●	▼	▼
EDM	Lutron Hi-Lume EcoSystem 1%	W	Standard/CC		●	●	●	●		
		S/P/CM	Standard/CC		●	●	●	●		
347V ³	347 Volts (DM1 required)	W	Standard/CC	●	●	●	●	●		
		P/S/CM	Standard/CC	●	●	●	●	●		
NXE	NX Wired (DM1 required)	W	PC/PCC	●	●	●	●			
		P/S/CM	PC/PCC/RMD	●	●	●	●			
NXW	NX Wireless (DM1 required)	W	PC/PCC	●	●	●	●			
		S	RMD	●	●	●	●			
		P/CM	PC/PCC/RMD	●	●	●	●			
DM00/AWNR	Lutron Athena 0–10V Dim to Off	W	PC/PCC	●	●	●	●			
		S	RMD	●	●	●	●			
		P/CM	PC/PCC/RMD	●	●	●	●			
Driver/EM Option	Cylinder Mounting ¹	Canopy Options ²	06L	10L	15L	20L				
DM1 with EM option ⁶	0–10V 1%	W	Standard/CC	●	●	▼				
		P/S/CM	Standard/CC	●	●	▼				

For LTC-4SQDS Shallow (9" cylinder body):

Driver/Control Option	Cylinder Mounting	Canopy Options	06L	10L	15L	20L	25L
DM1	0–10V 1%	W	PC/PCC	●	●	●	●
		P/S/CM	PC/PCC	●	●	●	●
DM01	0–10V <1%	W	PC/PCC	●	●	●	●
		P/S/CM	PC/PCC	●	●	●	●
DALI	DALI 1%	W	PC/PCC	●	●	●	●
		P/S/CM	PC/PCC	●	●	●	●
DMX	DMX w/ RDM <0.1%	W	PC/PCC	●	●	●	●
		P/S/CM	PC/PCC	●	●	●	●
		P/S/CM	RMD	●	●	●	●
EDM	Lutron Hi-Lume EcoSystem 1%	W	PC/PCC		●	●	●
		P/S/CM	PC/PCC		●	●	●
347V ³	347 Volts (DM1 required)	W	PC/PCC	●	●	●	●
		P/S/CM	PC/PCC	●	●	●	●
NXE	NX Wired (DM1 required)	W	PC/PCC	●	●	●	●
		P/S/CM	PC/PCC	●	●	●	●
			RMD	●	●	●	●
NXW	NX Wireless (DM1 required)	W	PC/PCC	●	●	●	●
		S	RMD	●	●	●	●
		P/CM	PC/PCC/RMD	●	●	●	●
DM00/AWNR ⁶	Lutron Athena 0–10V Dim to Off	W	PC/PCC	●	●	●	●
		S	RMD	●	●	●	●
		P/CM	PC/PCC/RMD	●	●	●	●

▼ Vented cylinder required, see line art for more details.

¹ See Cylinder Mounting chart.

² See Canopy Options chart and Dimensions section for details.

³ Not available with Controls or EM.



⁴ RMD is Non-IC rated unless noted.

⁵ IC Rated.

⁶ EM option not available with Controls.

Cylinder Mounting		Canopy Options	
S	Surface Mount	(Blank)	Standard Canopy
W	Wall Mount	CC	Conduit Canopy
P	Pendant Mount	PC	Power Canopy
CM	Cord Mount	PCC	Power Conduit Canopy
		RMD	Recessed Mount Driver ⁴

NX LIGHTING CONTROLS

Control Option Ordering Logic & Description			Control Option Functionality								Control Option Components	
			Networkable	Grouping	Scheduling	Occupancy/Motion	Daylight Harvesting	0-10V Dimming	On/Off Control	Bluetooth App Programming		
NX Wireless	NXW	NX Networked Wireless Radio Module NXRM2 and Bluetooth Programming, without Sensor	✓	✓	✓	-	-	✓	✓	✓		NXRM2-H
NX Wired	NXE	NX Wired Dual RJ45 SmartPORTS, without Sensor	✓	✓	✓	-	-	✓	✓	✓ ¹		NXDSP

¹ Requires NXBTC, order separately.

NX LIGHTING CONTROLS APP



The NX Lighting Controls App is a free to use mobile application for programming both an NX Lighting Controls System or Standalone Bluetooth Sensors. The mobile app allows you to configure devices, discover and setup wireless enabled luminaires and program your NX system settings.




Android



Apple iOS

OTHER LIGHTING CONTROLS

Control Option Ordering Logic & Description			Control Option Functionality								Control Option Components	
			Networkable	Grouping	Scheduling	Occupancy/Motion	Daylight Harvesting	0-10V Dimming	On/Off Control	Bluetooth App Programming		
Other	AWNDR	The Athena wireless node is a radio frequency (RF) device that enables simple, digital control of individual light fixtures in an Athena control system. ¹	✓	✓	-	-	-	✓	✓	-		A-WN-D01-RF-WH

¹ Lutron Athena Hub required to enable Networking, Grouping and Scheduling.

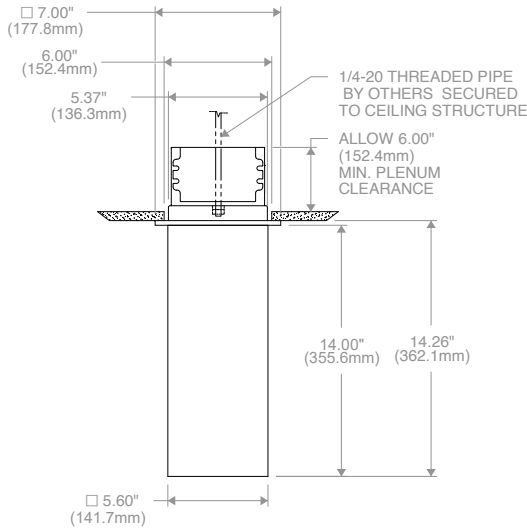
PERFORMANCE DATA TABLE

Performance data provided below is for 3500K, 80 CRI with Specular Clear reflector finish/color

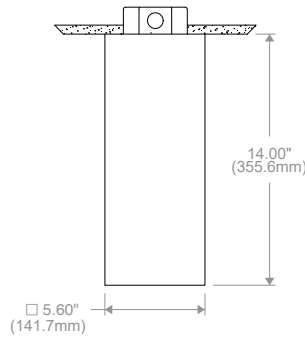
Lumen Package	Nominal Lumens	Distribution	Delivered Lumens	Watts	LPW
06L	600	Very Narrow	705	8.2	86
		Narrow	796	7.8	102
		Medium	764	7.8	98
		Wide	678	7.8	87
		Extra Wide	643	7.8	82
10L	1000	Very Narrow	1158	12.5	92
		Narrow	1273	12.0	106
		Medium	1222	12.0	102
		Wide	1085	12.0	90
		Extra Wide	1028	12.0	86
15L	1500	Very Narrow	1663	18.0	92
		Narrow	1821	18.6	98
		Medium	1748	18.6	94
		Wide	1552	18.6	83
		Extra Wide	1471	18.6	79
20L	2000	Very Narrow	2090	23.3	90
		Narrow	2237	22.7	99
		Medium	2209	22.7	97
		Wide	2081	22.7	92
		Extra Wide	2026	22.7	89
25L	2500	Very Narrow	2520	29.6	85
		Narrow	3029	27.8	109
		Medium	2907	27.8	105
		Wide	2580	27.8	93
		Extra Wide	2446	27.8	88
30L	3000	Very Narrow	2944	37.0	80
		Narrow	3636	34.6	105
		Medium	3490	34.6	101
		Wide	3097	34.6	90
		Extra Wide	2936	34.6	85
35L	3500	Narrow	4343	42.9	101
		Medium	4169	42.9	97
		Wide	3700	42.9	86
		Extra Wide	3507	42.9	82
40L	4000	Narrow	4957	51.5	96
		Medium	4758	51.5	92
		Wide	4222	51.5	82
		Extra Wide	4003	51.5	78

DIMENSIONS

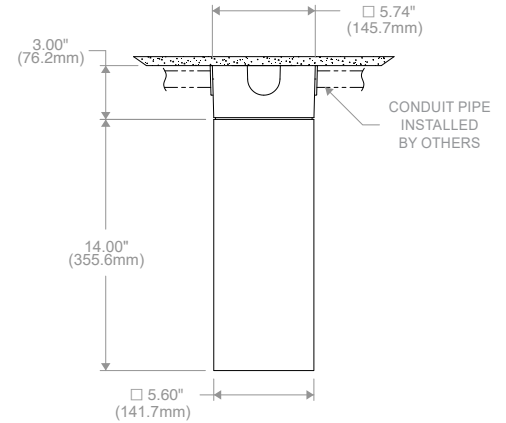
**LTC-4SQD
(14" CYLINDER BODY)
SURFACE (S)**



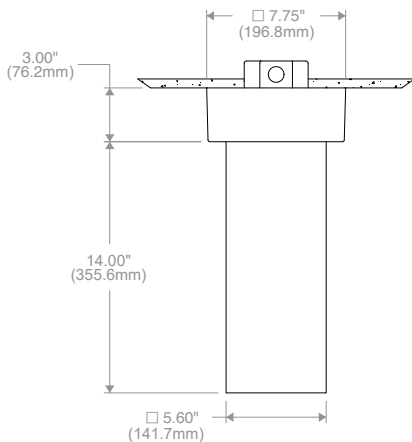
**Surface
Recessed Mount Driver
SRMD**



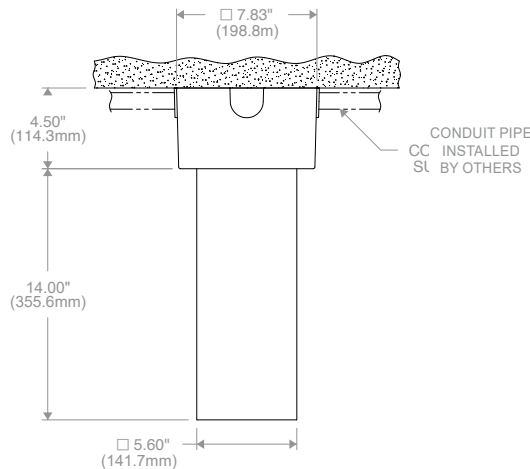
**Surface
Standard Canopy
S**



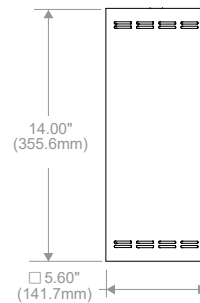
**Surface
Conduit Canopy
SCC**



**Surface
Power Canopy
SPC**



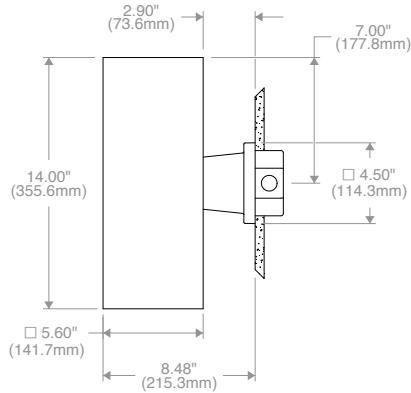
**Surface
Power Conduit Canopy
SPCC**



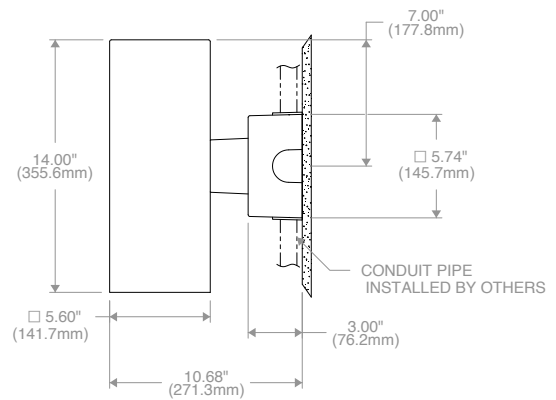
**Vented Detail view
All 35L and 40L
(All Mountings)**

DIMENSIONS

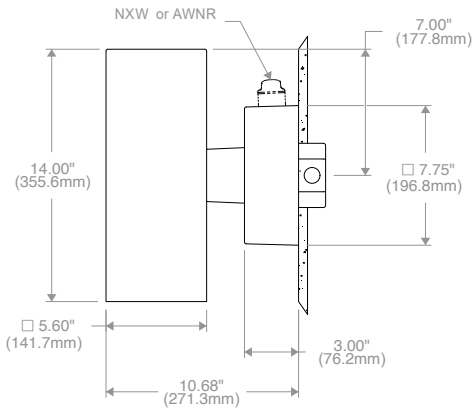
**LTC-4SQD
(14" CYLINDER BODY)
WALL (W)**



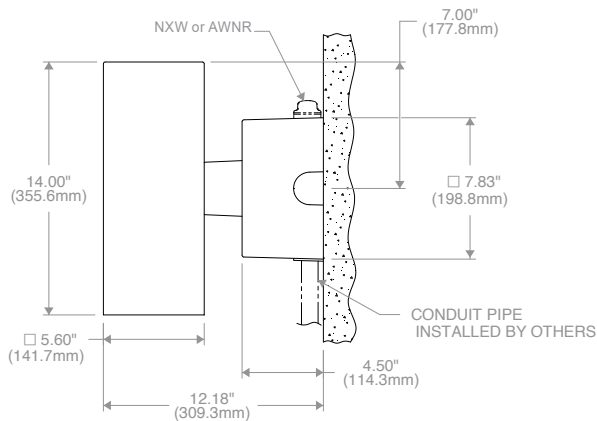
**Wall
(Standard Canopy)
W**



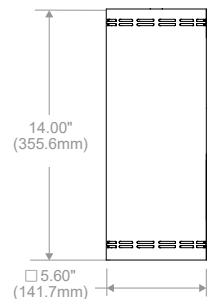
**Wall
Conduit Canopy
WCC**



**Wall
Power Canopy
WPC**



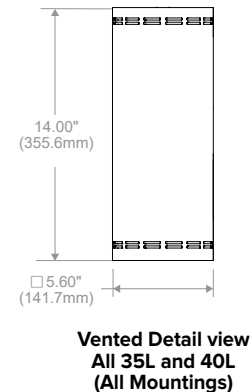
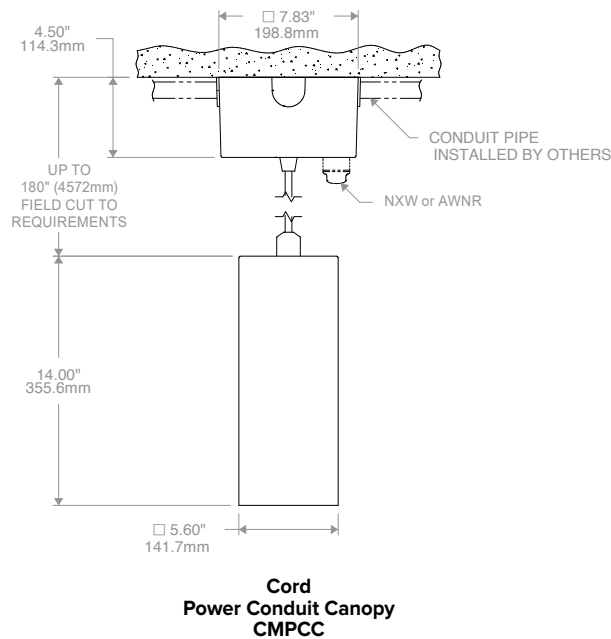
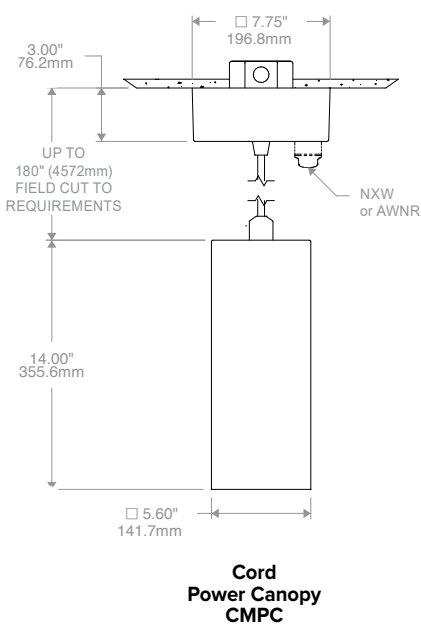
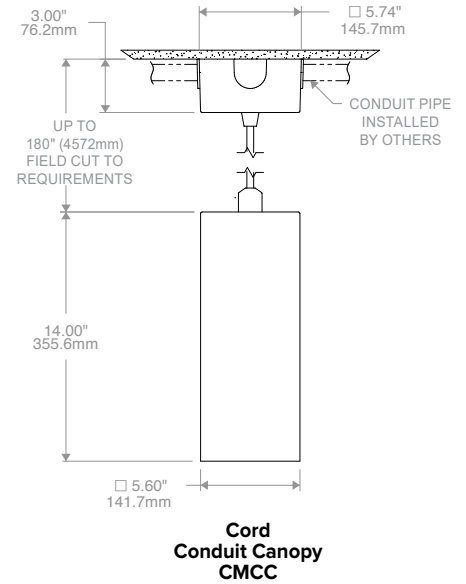
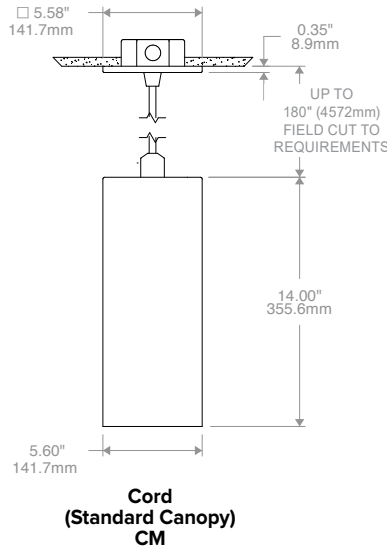
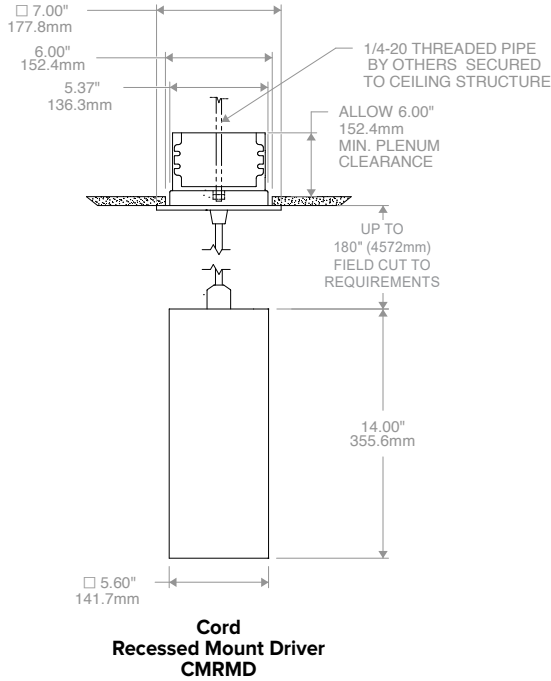
**Wall
Power Conduit Canopy
WPCC**



**Vented Detail view
All 35L and 40L
(All Mountings)**

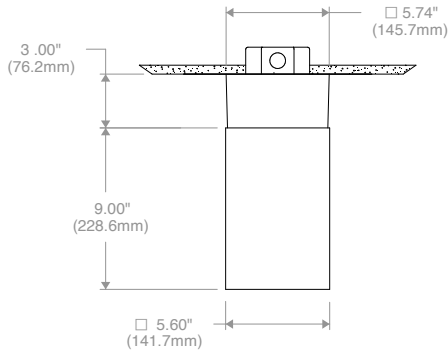
DIMENSIONS

**LTC-4SQD
(14" CYLINDER BODY)
CORD (CM)**

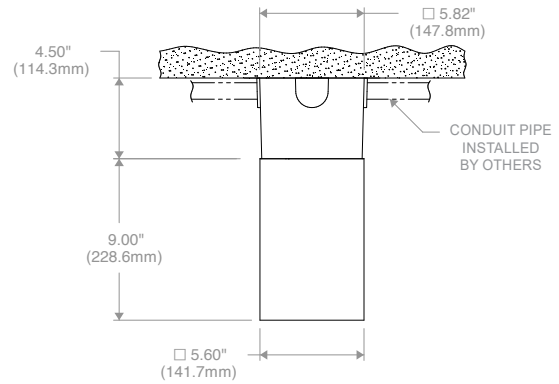


DIMENSIONS

**LTC-4SQDS
(9" CYLINDER BODY)
SURFACE (S)**

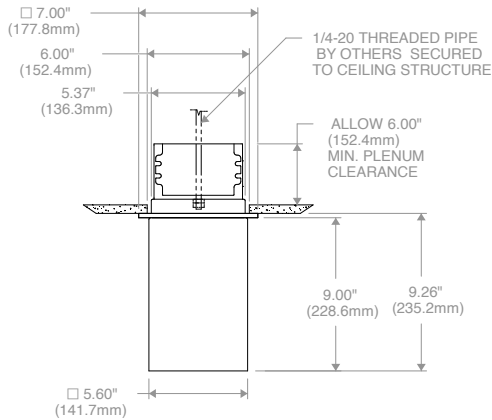


**Surface
Power Canopy
SPC**

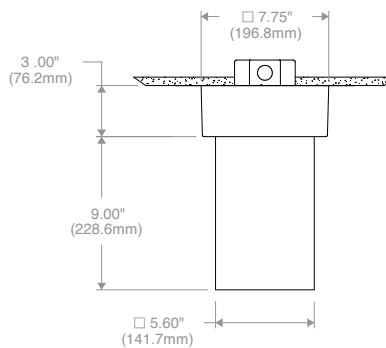


**Surface
Power Conduit Canopy
SPCC**

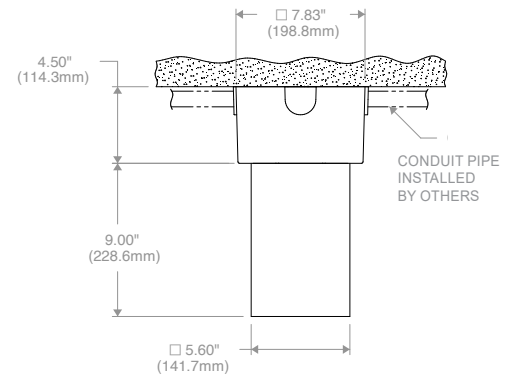
(FOR DMX OR CONTROLS OPTIONS ONLY)



**Surface
Recessed Mount Driver
SRMD**



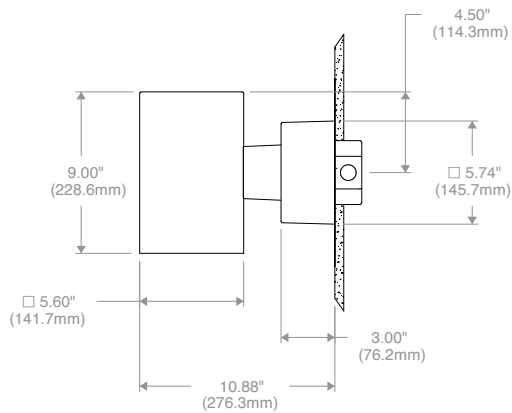
**Surface
Power Canopy
SPC**



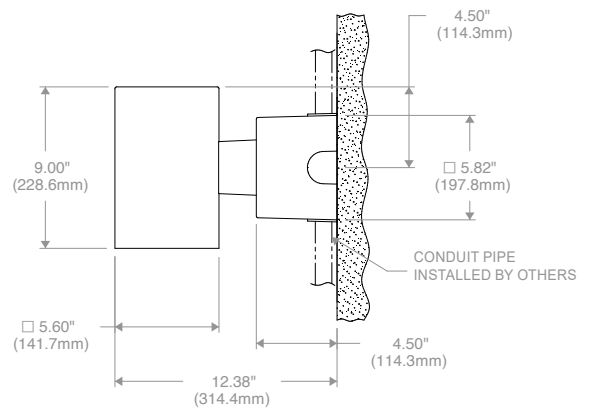
**Surface
Power Conduit Canopy
SPCC**

DIMENSIONS

**LTC-4SQDS
(9" CYLINDER BODY)
WALL (W)**

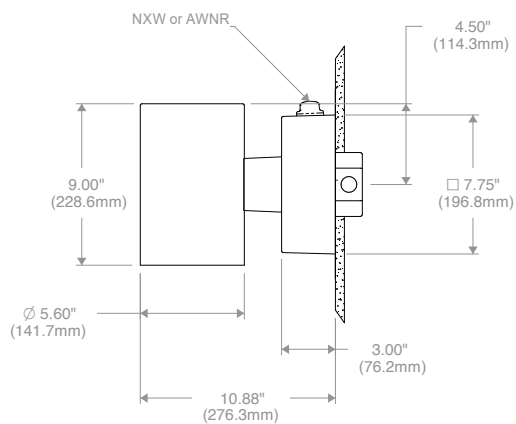


**Wall
Power Canopy
WPC**

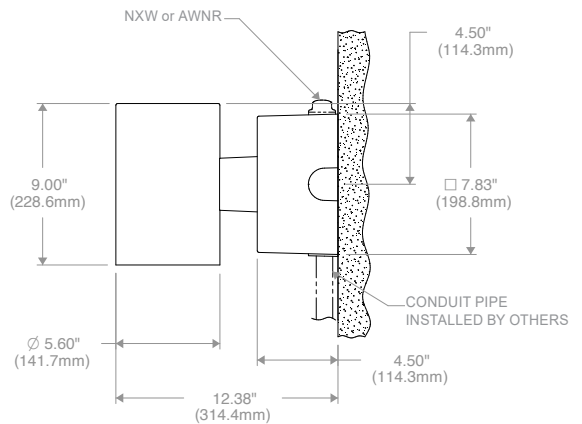


**Wall
Power Conduit Canopy
WPCC**

(FOR DMX OR CONTROLS OPTIONS ONLY)



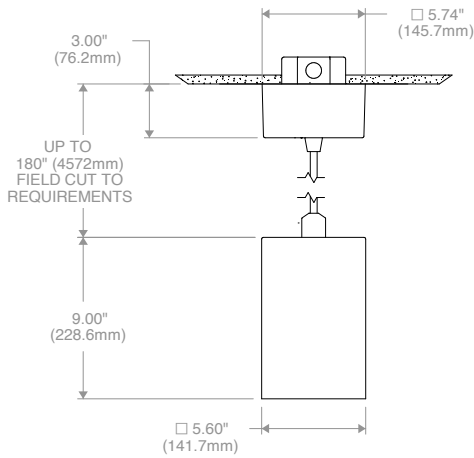
**Wall
Power Canopy
WPC**



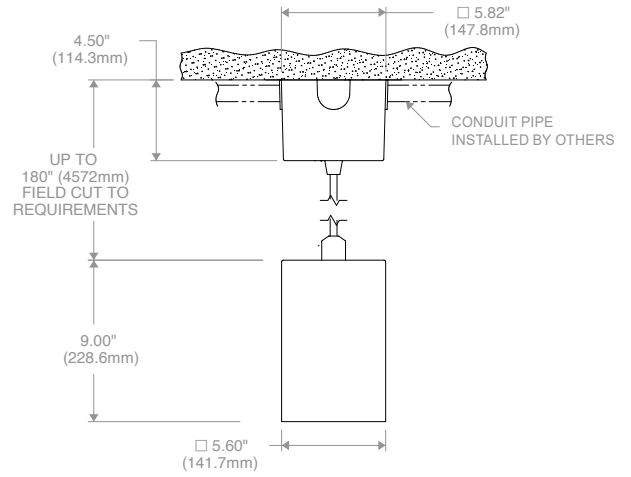
**Wall
Power Conduit Canopy
WPCC**

DIMENSIONS

**LTC-4SQDS
(9" CYLINDER BODY)
CORD MOUNT (CM)**

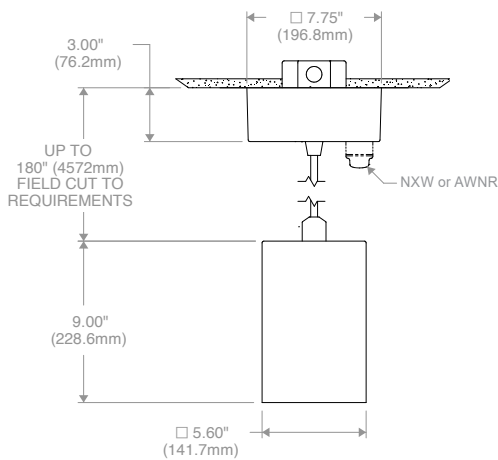


**Wall
Power Canopy
WPC**

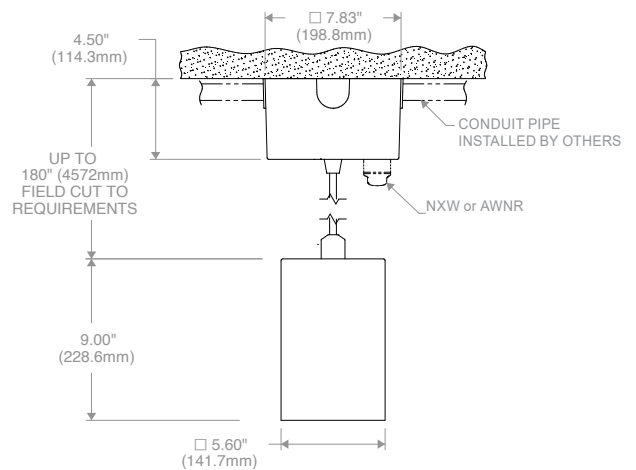


**Wall
Power Conduit Canopy
WPCC**

(FOR DMX OR CONTROLS OPTIONS ONLY)



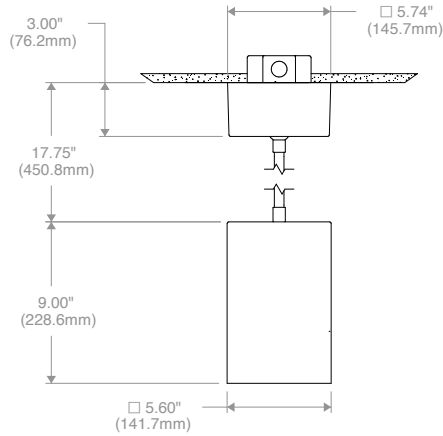
**Wall
Power Canopy
WPC**



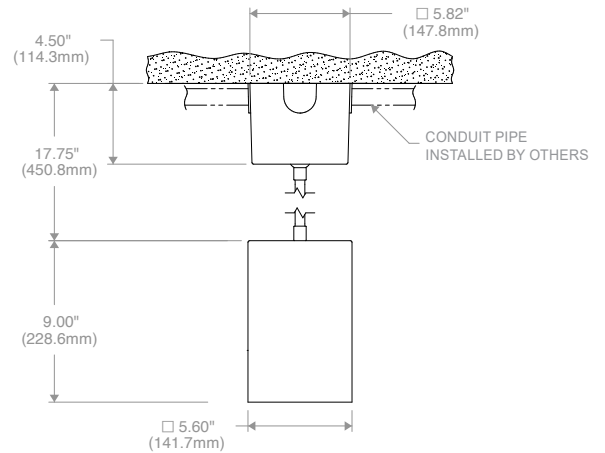
**Wall
Power Conduit Canopy
WPCC**

DIMENSIONS

**LTC-4SQDS
(9" CYLINDER BODY)
PENDANT (P)**

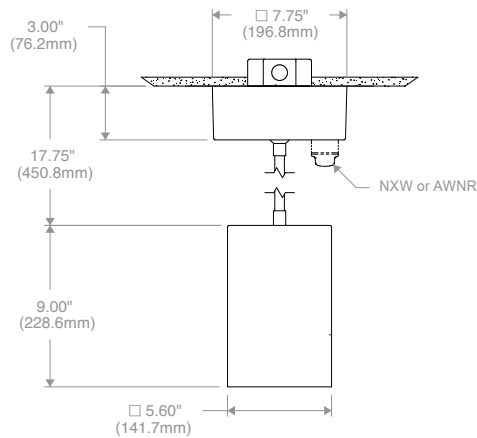


**Pendant
Conduit Canopy
PCC**

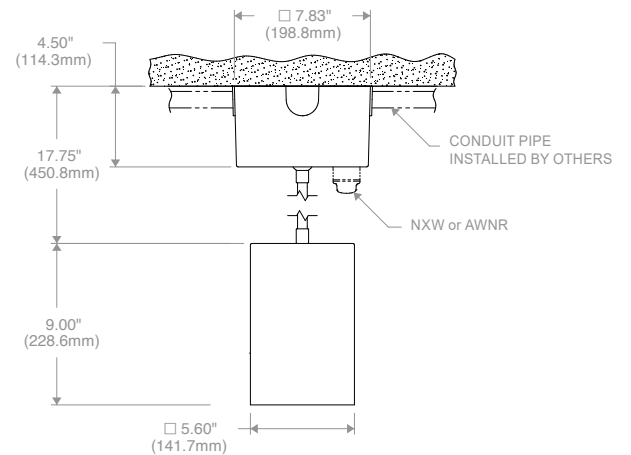


**Pendant
Power Canopy
PPC**

(FOR DMX OR CONTROLS OPTIONS ONLY)



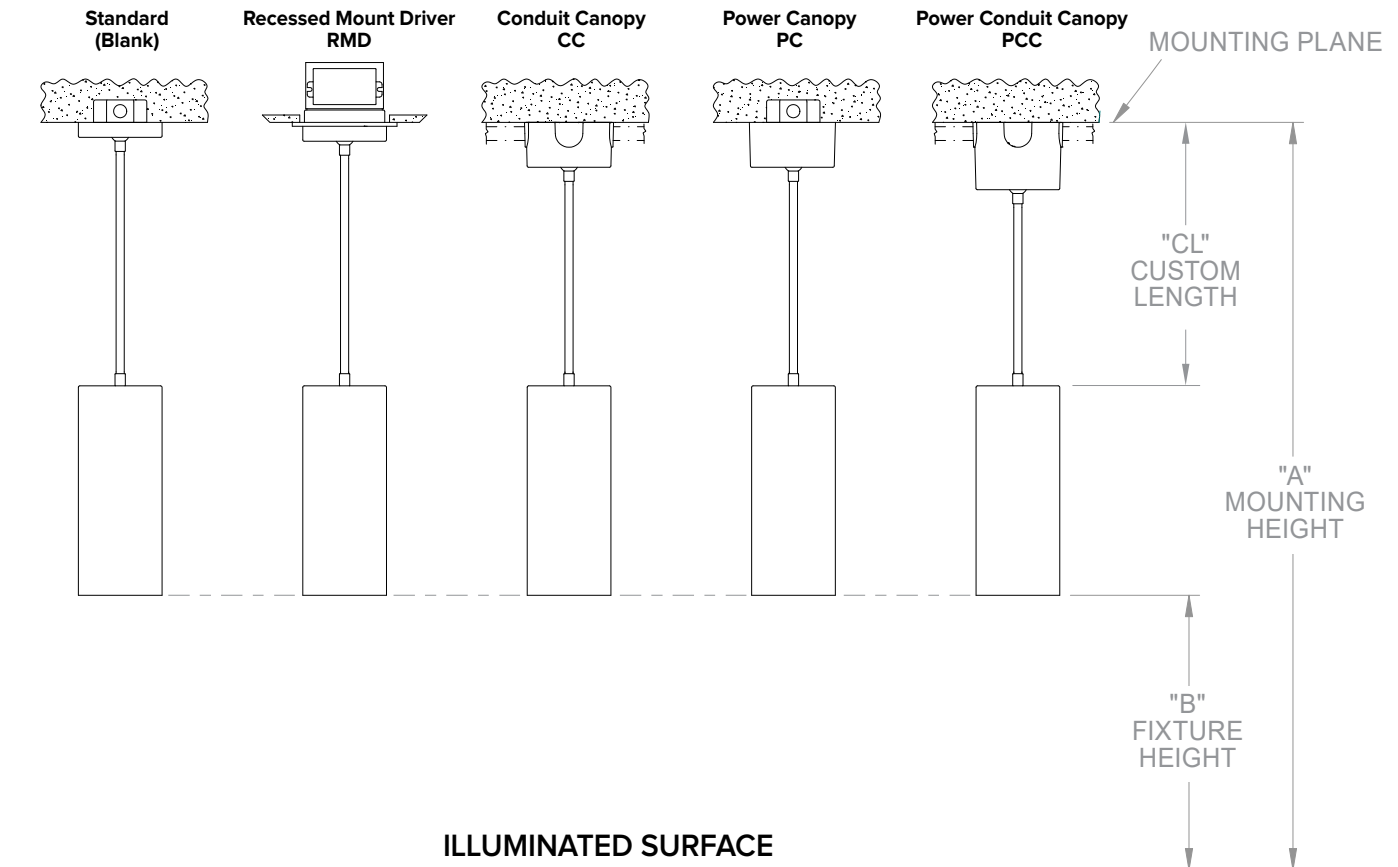
**Pendant
Conduit Canopy
PCC**



**Pendant
Power Canopy
PPC**

DIMENSIONS

PENDANT CUSTOM LENGTH



Custom Length (CL) = Mounting Height (A) - Fixture Height (B) - Cylinder Body Length

Ordering Example:

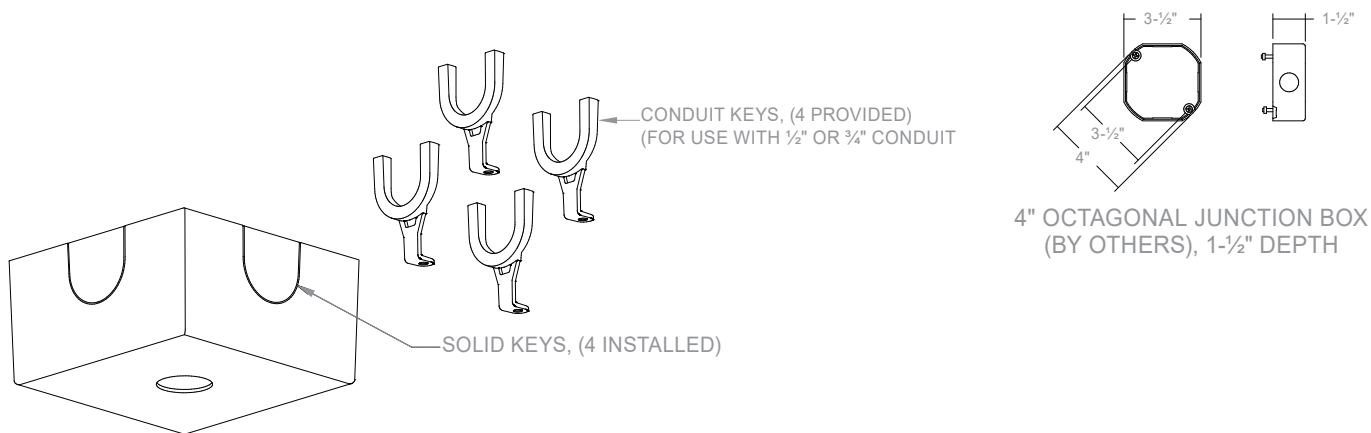
A (120") - B (72") - 14" = 34" Custom Length
LTC-4SQD-P34

A (120") - B (72") - 9" = 39" Custom Length
LTC-4SQDS-P39

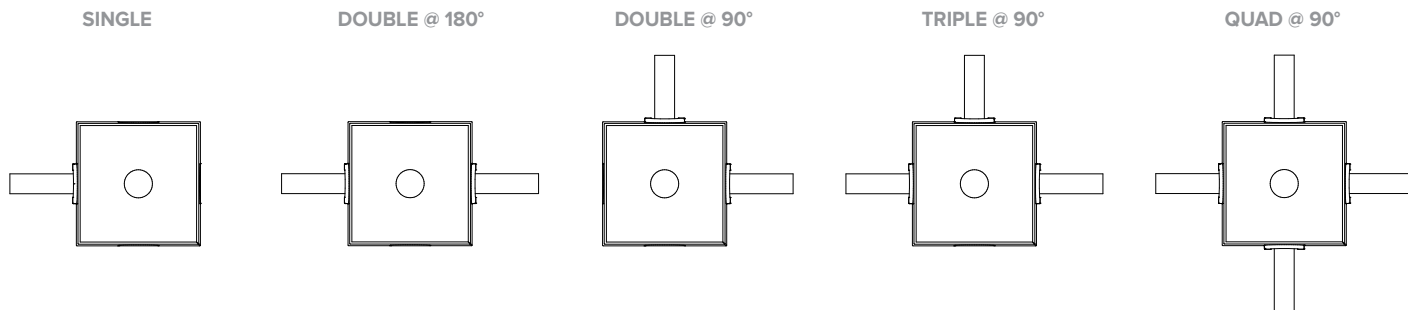
DIMENSIONS

CONDUIT CANOPY DETAILS

CC and PCC Conduit Canopy options come standard with (4) Solid Keys installed and (4) Conduit Keys provided. Accommodates a 4" octagonal junction box with 1-1/2" depth (by others).



CONDUIT MOUNTING EXAMPLES - FIELD INTERCHANGEABLE



PHOTOMETRY

LTC-4SQD-P-20L35K8VNR-DM1-S-BL

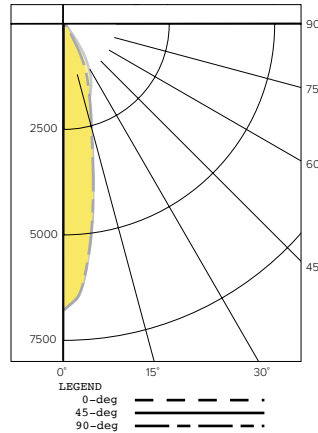
LUMINAIRE DATA

Test No.	R20.01214-C01
Description	2000 lm, Very Narrow, 3500K, 80 CRI
Delivered Lumens	2090
Watts	23.3W
Efficacy	90
Mounting	Pendant
Spacing Criterion	0.4
Beam Angle (FWHM)	23

ZONAL LUMEN SUMMARY

Zone	Lumens	% Luminaire
0-40	1994	95.4
0-60	2083	99.6
0-90	2090	100.0
0-180	2090	100.0

POLAR GRAPH



CANDELA DISTRIBUTION

Degree	Candela - 0	Candela - 45	Candela - 90
0	6726	6726	6726
5	5842	5834	5819
15	2473	2412	2440
25	1158	1490	1150
35	199	626	199
45	110	133	110
55	17	21	17
65	5	5	4
75	2	2	2
85	0	0	0
90	0	0	0

LTC-4SQD-P-20L35K8NR-DM1-S-BL

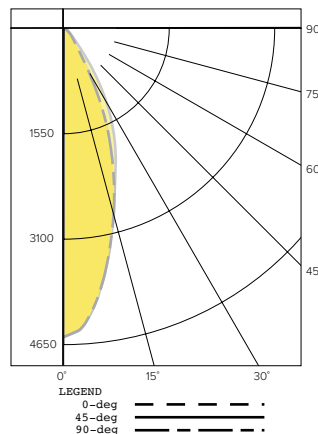
LUMINAIRE DATA

Test No.	R19.00949-01
Description	2000 lm, Narrow, 3500K, 80 CRI
Delivered Lumens	2237
Watts	22.7W
Efficacy	98.7
Mounting	Pendant
Spacing Criterion	0.6
Beam Angle (FWHM)	37

ZONAL LUMEN SUMMARY

Zone	Lumens	% Luminaire
0-40	2103	94.0
0-60	2227	99.6
0-90	2237	100.0
0-180	2237	100.0

POLAR GRAPH



CANDELA DISTRIBUTION

Degree	Candela - 0	Candela - 45	Candela - 90
0	4527	4527	4527
5	4233	4235	4231
15	2801	2791	2788
25	1321	1711	1318
35	282	655	283
45	110	133	110
55	23	30	24
65	5	6	5
75	2	2	2
85	1	1	1
90	0	0	0

LTC-4SQD-P-20L35K8MD-DM1-S-BL

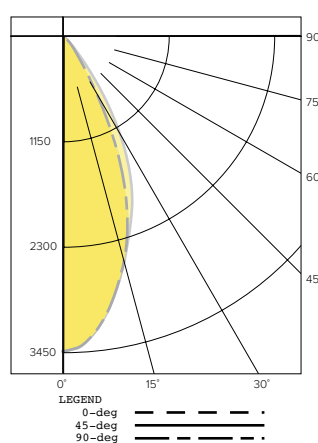
LUMINAIRE DATA

Test No.	R19.00950-01
Description	2000 lm, Medium, 3500K, 80 CRI
Delivered Lumens	2209
Watts	22.7W
Efficacy	97.4
Mounting	Pendant
Spacing Criterion	0.8
Beam Angle (FWHM)	46

ZONAL LUMEN SUMMARY

Zone	Lumens	% Luminaire
0-40	2056	93.1
0-60	2199	99.6
0-90	2209	100.0
0-180	2209	100.0

POLAR GRAPH



CANDELA DISTRIBUTION

Degree	Candela - 0	Candela - 45	Candela - 90
0	3435	3435	3435
5	3305	3309	3307
15	2550	2565	2556
25	1414	1761	1424
35	365	739	371
45	123	155	124
55	26	34	26
65	6	6	5
75	2	3	2
85	1	1	1
90	0	0	0

PHOTOMETRY (CONTINUED)

LTC-4SQD-P-20L35K8WD-DM1-S-BL

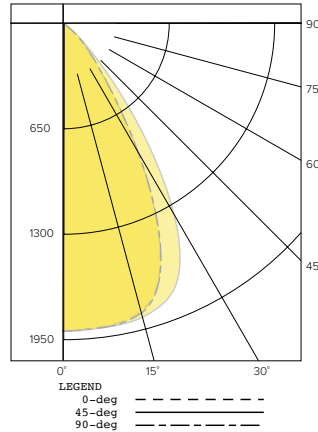
LUMINAIRE DATA

Test No.	R19.01045-01
Description	2000 lm, Wide, 3500K, 80 CRI
Delivered Lumens	2081
Watts	22.7W
Efficacy	91.8
Mounting	Pendant
Spacing Criterion	1.0
Beam Angle (FWHM)	60

ZONAL LUMEN SUMMARY

Zone	Lumens	% Luminaire
0-40	1846	96.3
0-60	2068	99.8
0-90	2081	100.0
0-180	2081	100.0

POLAR GRAPH



CANDELA DISTRIBUTION

Degree	Candela - 0	Candela - 45	Candela - 90
0	1906	1906	1906
5	1897	1902	1900
15	1850	1887	1861
25	1392	1702	1403
35	549	939	558
45	190	257	192
55	38	52	39
65	7	8	7
75	3	3	3
85	1	1	1
90	0	0	0

LTC-4SQD-P-20L35K8XW-DM1-S-BL

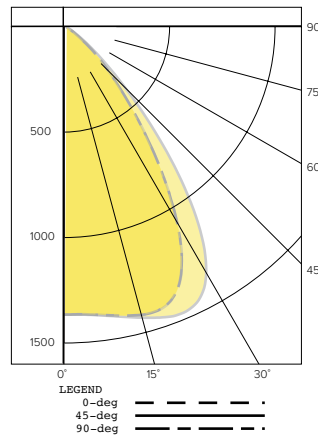
LUMINAIRE DATA

Test No.	R19.00952-01
Description	2000 lm, Extra Wide, 3500K, 80 CRI
Delivered Lumens	2026
Watts	22.7W
Efficacy	89.2
Mounting	Pendant
Spacing Criterion	1.2
Beam Angle (FWHM)	69

ZONAL LUMEN SUMMARY

Zone	Lumens	% Luminaire
0-40	1699	83.9
0-60	2012	99.3
0-90	2026	100.0
0-180	2026	100.0

POLAR GRAPH



CANDELA DISTRIBUTION

Degree	Candela - 0	Candela - 45	Candela - 90
0	1368	1368	1368
5	1373	1375	1373
15	1418	1432	1417
25	1304	1458	1301
35	741	1064	738
45	271	376	271
55	48	73	49
65	8	9	8
75	3	3	3
85	1	1	1
90	0	0	0

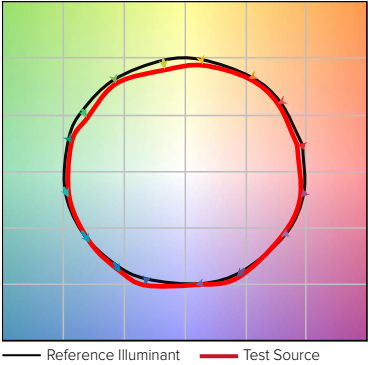
LUMEN MULTIPLIER

Option	27K8	30K8	35K8	40K8	50K8	27K9	30K9	35K9	40K9
Multiplier	0.94	0.98	1.00	1.01	1.02	0.81	0.84	0.85	0.85

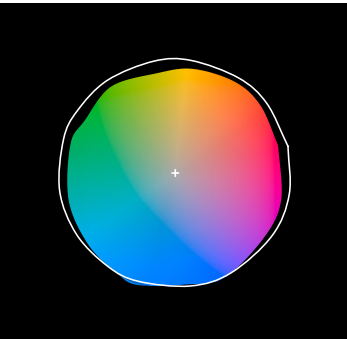
Photometrics are published below at a nominal 3500 Kelvin, 80+ CRI. This table may be used to approximate the lumen values at different Kelvin temperatures. Power consumption would stay the same.

TM-30 DATA

COLOR VECTOR GRAPHIC
3500K, 90 CRI

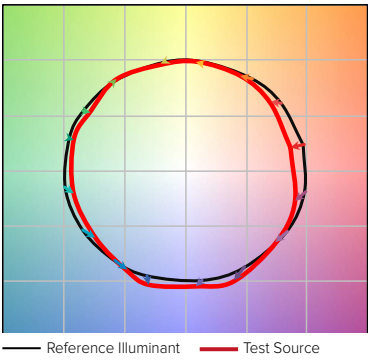


COLOR DISTORTION GRAPHIC
3500K, 90 CRI

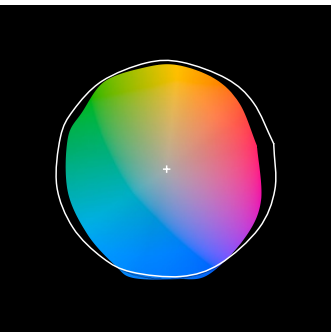


TEST RESULTS - 3500K		
Value	80+ CRI	90+ CRI
R _f	84	88
R _g	95	95
CCT (K)	3411	3419
D _{uv}	0.0015	0.0042
x	0.4120	0.4147
y	0.3974	0.4052
CIE R _a	84	93
CIE R _g	11	62

COLOR VECTOR GRAPHIC
3500K, 80 CRI



COLOR DISTORTION GRAPHIC
3500K, 80 CRI



ELECTRICAL DATA

DRIVER DATA		
Input Voltage	120–277 V	347 V
Input Frequency	50/60 Hz	50/60 Hz
Power Factor	≥0.90	≥0.90
THD	<20%	<20%
EMI Filtering (FCC 47 CFR Part 15)	Class A	Class A
Operating Temperature	-20° C to 40° C	-20° C to 40° C

* Values for DM1 option shown, values for other dimming options may vary.

ADDITIONAL INFORMATION

Dimming Compatibility

For more details and recommended dimmer list, see Dimming Compatibility Information on currentlighting.com/prescolite.

DMX

See instruction sheet on currentlighting.com/prescolite for connection & installation information.

Lumen Output in Emergency Mode

To determine the lumen output in emergency mode multiply the battery pack wattage by the fixture lumens per watt (LPW). For example, 6W x 120 LPW = 720 lumens in emergency mode.