

# LTC-4SQD SpectraSync

LITEISTRY 4" SQUARE CYLINDER WITH COLOR TUNING

DATE:	LOCATION:
TYPE:	PROJECT:
CATALOG #:	

## FEATURES

- 4" architectural LED downlight cylinder delivering 600 up to 1500 lm
- Four beam distributions from 0.6 to 1.2 Spacing Criteria
- Quiet reflector appearance with 50° optical cutoff
- SpectraSync™ Color Tuning technology allows flexibility to tailor CCT to aesthetic preferences
- Available in Dim To Warm (2200K–3000K) or Tunable White (2700K–5000K or 2700K–6500K), 90 CRI
- Available in Surface, Wall, Pendant or Cord Mount configurations
- Versatile canopy options for recessed and surface-mounted J-box applications
- Standard with 0–10V dimming to 5%



## CONTROL TECHNOLOGY



## SPECIFICATIONS

### CONSTRUCTION

- Seamless heavy gauge aluminum cylinder body with a clean appearance
- Available in Surface (S), Wall (W), Pendant (P), or Cord (CM) mounting types
- Canopy options include Standard and Conduit Canopy (CC), (See Dimensions section for details)
- For S, P, or CM mounting with CC canopy option, use 4" octagonal junction box (by others)
- All Wall Mount: Die cast aluminum mounting arm allows direct mounting to standard 4" octagonal or square junction box
- Pendant Mount canopy options allow sloped ceiling up to 35°
- Select from 4 standard architectural painted finishes, Brushed Aluminum, or specified custom color

### OPTICS

- Visually pleasing 50° cutoff to source and source image
- The light distribution is free of distracting bright spots or pixelation and the perimeter has a smooth transition
- Optical grade silicone lens integral to light engine
- High purity four panel aluminum reflector, self-flanged
- Large selection of anodized finishes and colors
- Painted cones and flange options available

### ELECTRICAL

- LED array with 3 SDCM color consistency
- Dim to Warm (2200K–3000K) or Tunable White (2700K–5000K or 2700K–6500K) options available
- 90+ CRI standard
- Long LED life: L70 at >60,000 (TM-21)
- Universal voltage 120V–277V driver
- UL Class 2, inherent short circuit and overload protection
- Flicker free 0–10V dimming to 5%
- Lutron Athena control option available

### INSTALLATION

- Light Engine/Trim assembly is mechanically secured with torsion springs for ease of installation
- Conduit Canopy options (CC) allow field selectable conduit entry (up to 4@ 90°) (See Dimensions section)
- Conduit Canopies utilize a patent pending mounting yoke to secure cylinder to the ceiling surface
- Cord can be cut in the field to custom length
- Standard and Custom Pendant lengths available (specify when ordering)

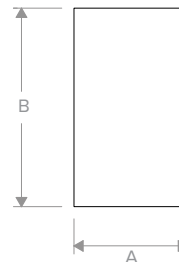
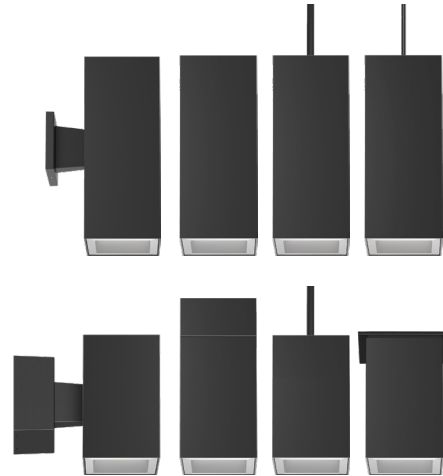
### CERTIFICATIONS

- cCSAus certified to UL 1598
- Wall Mount up to 10L (except CC): Suitable for wet locations
- Pendant Mount up to 10L (except CC): Suitable for wet locations under covered ceiling
- Surface, Cord Mount and all 15L, and all CC: Suitable for damp locations
- For -BAA Option: This product meets federal procurement law requirements under the Buy American Act (FAR 52.225-9). [See Buy America\(n\) Solutions](#)
- For -TAA Option: Product configurations meet federal procurement law requirements under the Trade Agreements Act (FAR 52.225-11). [See Buy America\(n\) Solutions](#)

### WARRANTY

- 5 year warranty

## LITEISTRY™



Typical Dimensions and Weights			
Lumen Package	"A" Width (SQ) Inches (mm)	"B" Height Inches (mm)	Weight lbs (kg)
06L–15L	5.6 (140)	14 (356)	20.7 (9.4)

See DIMENSIONS section for complete details

KEY DATA	
Lumen Range	600–1500
Wattage Range	10–25
Efficacy Range (LPW)	49–60*
Reported Life (Hours)	L70 / >60,000
Input Current Range (mA)	83–208 (120V)

\*Based on Specular, 30K, 90 CRI

# LTC-4SQD SpectraSync

LITEISTRY 4" SQUARE CYLINDER WITH COLOR TUNING

DATE:	LOCATION:
TYPE:	PROJECT:
CATALOG #:	

## ORDERING GUIDE

Example: LTC-4SQD-CM15WHCC-15L2230TD9WD-DMTW-SS-WH

CATALOG #	
-----------	--

LTC-4SQD					
Aperture/Shape/Function		Cylinder Mounting	Canopy Option	Lumen Output	CCT
LTC-4SQD 4" Square Downlight Cylinder		S Surface	Refer to chart on Page 3 for available canopy options based on driver/controls selection	06L 600 Lumens <sup>3</sup>	2230TD 2200K–3000K SpectraSync™ Dim to Warm
LTC-4SQDS 4" Square Shallow Downlight Cylinder		W Wall		10L 1000 Lumens <sup>3</sup>	
		P Pendant (Standard) Nominal 18" length from cylinder top to ceiling <sup>8</sup>		15L 1500 Lumens <sup>3,6</sup>	
		P_ Pendant (Custom) Specify length from cylinder top to ceiling in 1" increments from 15 to 60 <sup>8</sup>	CC Conduit Canopy <sup>3,7</sup>		2750T 2700K–5000K SpectraSync™ Tunable White
		Cord <sup>5</sup>			2765T 2700K–6500K SpectraSync™ Tunable White
		CM 6ft Clear Cord			
		CMBL 6ft Black Cord			
		CMWH 6ft White Cord			
		CM15 15ft Clear Cord			
		CM15BL 15ft Black Cord			
		CM15WH 15ft White Cord			

Distribution		Driver Options	Control Options	Voltage	Reflector Finish	Reflector Color	Flange Color Options
NR Narrow (0.6 SC/37°)		DMTW SpectraSync™ Dim to Warm, 0–10V Dimming to 5% <sup>1,3</sup>	AWNR Lutron Athena Enabled <sup>3,10</sup>	Standard 120–277V	Finish not applicable with painted reflectors (WC or BC)	Standard Clear	Standard matches reflector color
MD Medium (0.8 SC/46°)		DMT SpectraSync™ Tunable White, 0–10V Dimming to 5% <sup>2,3</sup>			S Specular	CG Champagne Gold	WT White Flange <sup>4</sup>
WD Wide (1.0 SC/60°)		DM00T Lutron Athena compatible driver option for SpectraSync™ Tunable White <sup>3,10</sup>			SS Semi-Specular	BL Black	BT Black Flange <sup>4</sup>
XW Extra Wide (1.2 SC/69°)					VS Softglow®	LW Light Wheat	
						PW Pewter	
						WC Painted White Cone and Flange	
						BC Painted Black Cone and Flange	

Exterior Cylinder Color	Options
BA Brushed Aluminum <sup>9</sup>	BAA Buy American Act (FAR 52.225-9) Compliant
BZ Bronze	TAA Trade Agreements Act (FAR 52.225-11) Compliant
BL Matte Black	
WH Matte White	
SVR Silver	
CC_ Custom Color (Specify RAL#, Example: CCRAL1073)	
TCC_ True Custom Color (Specify description, Example: TCC BABY BLUE, Paint chip must be provided to match)	

### Notes:

- Must select 2230TD with DMTW or DM00T driver.
- Must select either 2750T or 2765T with DMT or DM00T driver.
- For lumen outputs/configurations available, see chart on page 3.
- WT not needed for WC; BT not needed for BC.
- Cord can be cut in the field to custom length.
- 15L requires vented cylinder.
- See Dimensions section for canopy configuration details.
- Stem length varies by canopy configuration. See Dimensions section for details.
- Canopy or metal accent color for Brushed Aluminum is Black.
- DM00T must be selected with AWNR Lutron Athena controls option.

# LTC-4SQD SpectraSync

LITEISTRY 4" SQUARE CYLINDER WITH COLOR TUNING

DATE:	LOCATION:
TYPE:	PROJECT:
CATALOG #:	

## DRIVER/CONTROL OPTION AVAILABILITY

Driver and Control options listed below are available in the configurations and lumen packages as shown.

### For LTC-4SQD:

Driver/Control Option		Cylinder Mounting <sup>1</sup>	Canopy Options <sup>2</sup>	06L	10L	15L
DMT	0–10V 5%	W	Standard/CC	●	●	▼
		P/S/CM	Standard/CC	●	●	▼
DMTW	0–10V 5%	W	Standard/CC	●	●	▼
		P/S/CM	Standard/CC	●	●	▼
DM00T / AWNRR	Lutron Athena 0–10V Dim to Off	W	PC/PCC	●	●	●
		S	RMD	●	●	●
		P/CM	PC/PCC	●	●	●

### For LTC-4QDS For LTC-4SQDS Shallow (9" Cylinder Body):

Driver/Control Option		Cylinder Mounting	Canopy Options	06L	10L
DMT	0–10V 5%	W	PC/PCC	●	●
		P/S/CM	PC/PCC	●	●
DMTW	0–10V 5%	W	PC/PCC	●	●
		P/S/CM	PC/PCC	●	●
DM00T / AWNRR	Lutron Athena 0–10V Dim to Off	W	PC/PCC	●	●
		S	RMD	●	●
		P/CM	PC/PCC	●	●

▼ Vented cylinder required, see line art for more details.

1 See Cylinder Mounting chart.

2 See Canopy Options chart and Dimensions section for details.

Cylinder Mounting	
S	Surface Mount
W	Wall Mount
P	Pendant Mount
CM	Cord Mount

Canopy Options	
(Blank)	Standard Canopy
CC	Conduit Canopy

# LTC-4SQD SpectraSync

LITEISTRY 4" SQUARE CYLINDER WITH COLOR TUNING

DATE:	LOCATION:
TYPE:	PROJECT:
CATALOG #:	

## CONTROLS

### SpectraSync™ Color Tuning Technology:

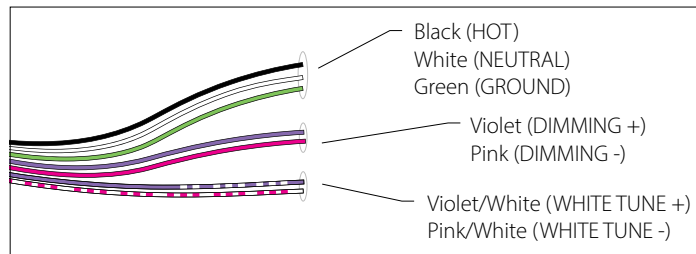
Control your space based on the needs of the application, specific activities throughout the day and preferences of the occupants with distinct SpectraSync™ Color Tuning Technologies.



SPECTRASYNCH COLOR TUNING TECHNOLOGY		
Mode	Kelvin Range	Description
Dim to Warm	2200K–3000K	Mimics the familiar warming effect that occurs with traditional incandescent sources as they are dimmed
Tunable White	2700K–5000K 2700K–6500K	Offers users the ability to tailor CCT to their personal preference, enhancing task visibility, material and colors or the aesthetics of the space
Scheduled White	2700K–5000K 2700K–6500K	Mimics the rhythm of natural light or follows an alternative user-defined schedule throughout the day, enhancing an occupant's mood and well-being

### SpectraSync Tunable White

Available in two options: 2750T (2700K–5000K) or 2765T (2700K–6500K). Requires two 0–10V controllers, one for intensity and one for CCT. Minimum 5% dimming.

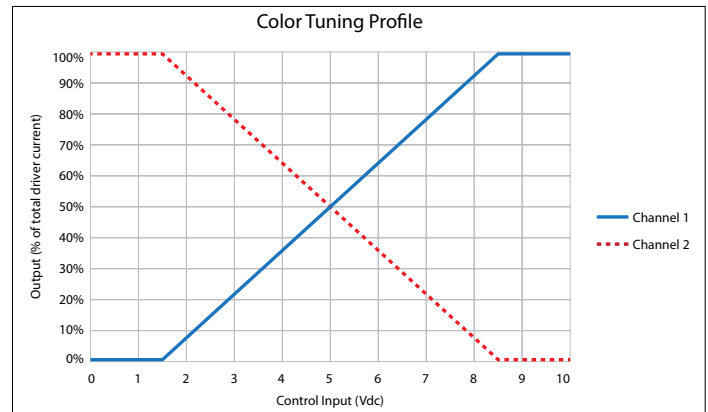


SpectraSync Tunable White luminaires are provided with two 0–10V circuits. The violet and pink circuit is for wiring to any qualified 0–10V controller for dimming. The violet/white and pink/white circuit is for wiring to any qualified 0–10V controller for Tunable White CCT control.

### Controller Manufacturer Data


SpectraSync Tunable White was designed to be used with sinking style dimmers (provided by others) and is compatible with:

- Current: NX Lighting Controls Room Controllers (NXRC) and In-fixture Controllers (NXFM)
- Lutron: DDTV, DVSTV, and NDTV dimmers
- Wattstopper: ADF120277 and CD4BL (Titan) dimmers



To enable scheduling and for use with NX wall control preset stations please refer to SpectraSync technical sheet.

## OTHER LIGHTING CONTROLS

Control Option Ordering Logic & Description			Control Option Functionality								Control Option Components	
			Networkable	Grouping	Scheduling	Occupancy/Motion	Daylight Harvesting	0-10V Dimming	On/Off Control	Bluetooth App Programming		
Other	AWNDR	The Athena wireless node is a radio frequency (RF) device that enables simple, digital control of individual light fixtures in an Athena control system. <sup>1</sup>	✓	✓	–	–	–	✓	✓	–		A-WN-D01-RF-WH

<sup>1</sup> Lutron Athena Hub required to enable Networking, Grouping and Scheduling.





# LTC-4SQD SpectraSync

LITEISTRY 4" SQUARE CYLINDER WITH COLOR TUNING

DATE:	LOCATION:
TYPE:	PROJECT:
CATALOG #:	

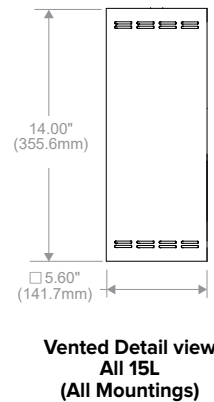
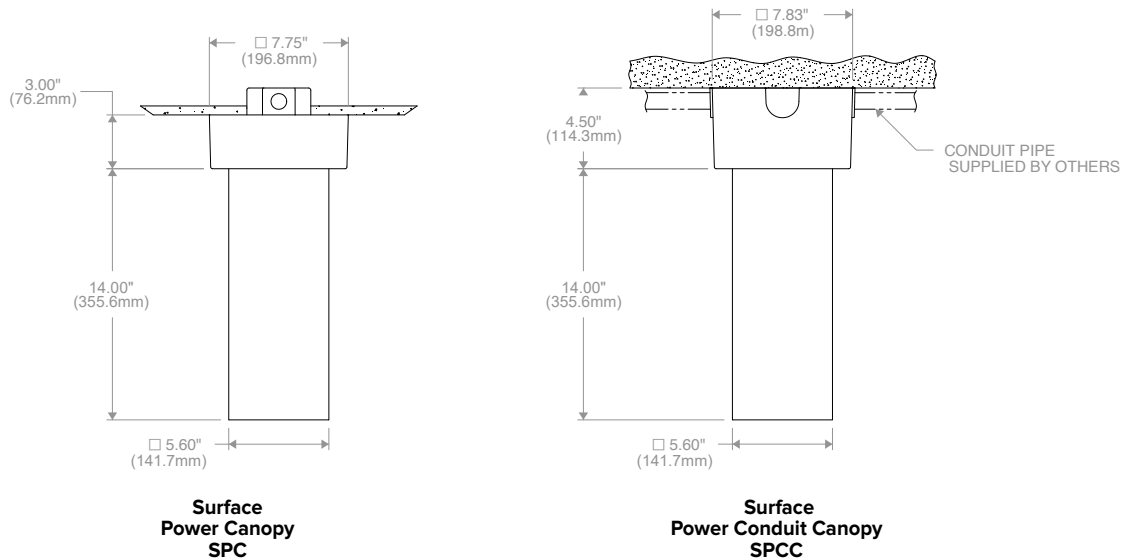
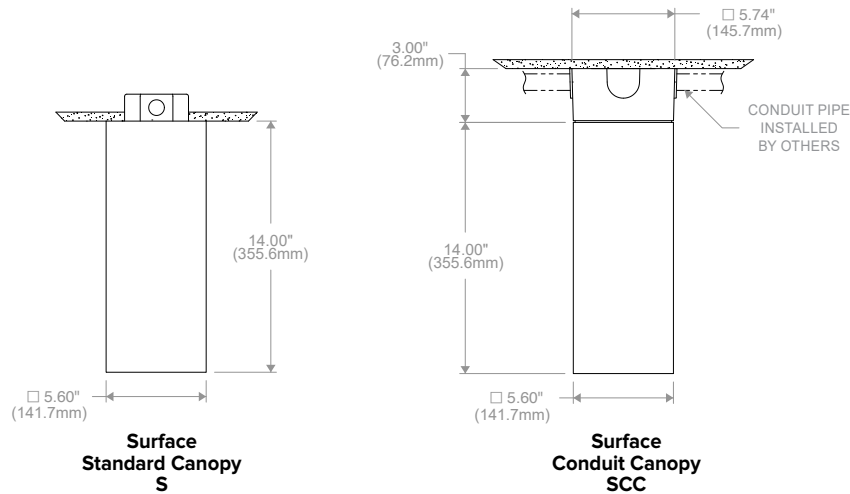
## PERFORMANCE DATA TABLE

Performance data provided below is for 3000K, 90 CRI with Specular Clear reflector finish/color

Lumen Package	Nominal Lumens	Distribution	Delivered Lumens	Watts	LPW
06L	600	Narrow	688	10.0	69
		Medium	664	10.0	66
		Wide	585	10.0	58
		Extra Wide	571	10.0	57
10L	1000	Narrow	1100	18.0	61
		Medium	1062	18.0	59
		Wide	936	18.0	52
		Extra Wide	913	18.0	51
15L	1500	Narrow	1573	25.0	63
		Medium	1519	25.0	61
		Wide	1338	25.0	54
		Extra Wide	1306	25.0	52

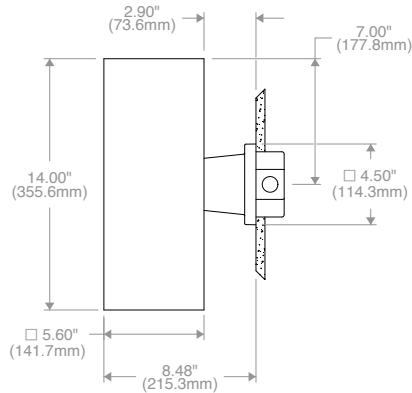
## DIMENSIONS

### LTC-4SQD (14" CYLINDER BODY) SURFACE (S)

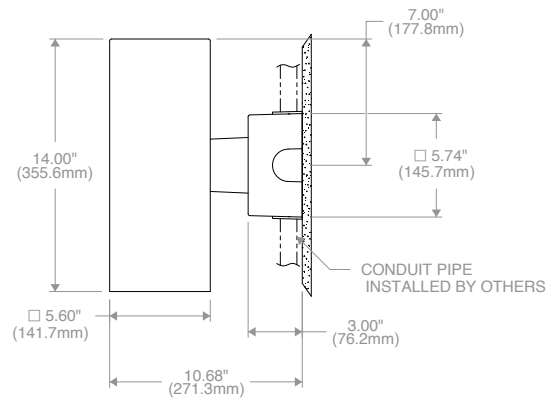


## DIMENSIONS

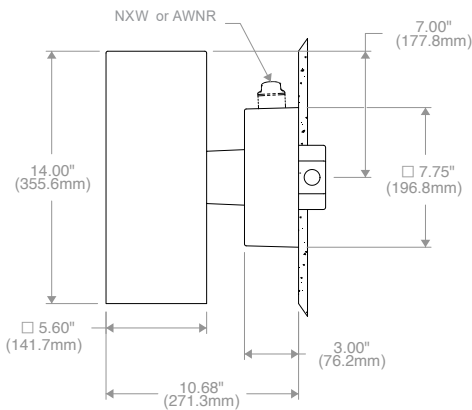
### LTC-4SQD (14" CYLINDER BODY) WALL (W)



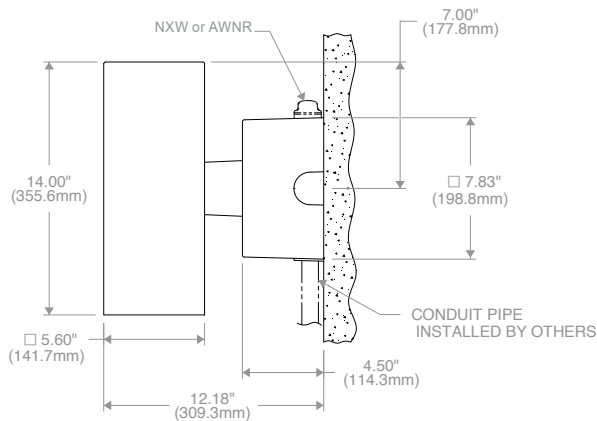
**Wall  
(Standard Canopy)  
W**



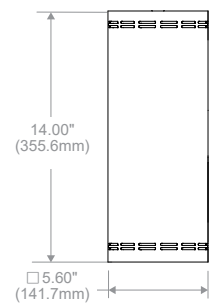
**Wall  
Conduit Canopy  
WCC**



**Wall  
Power Canopy  
WPC**



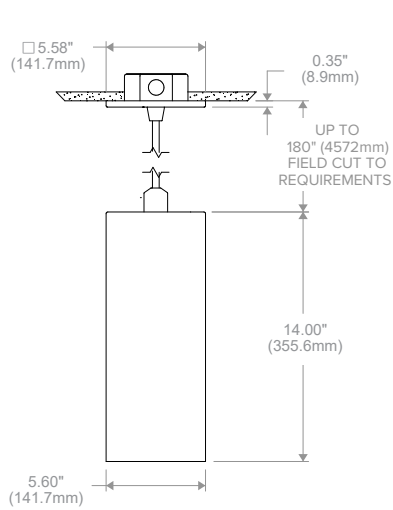
**Wall  
Power Conduit Canopy  
WPCC**



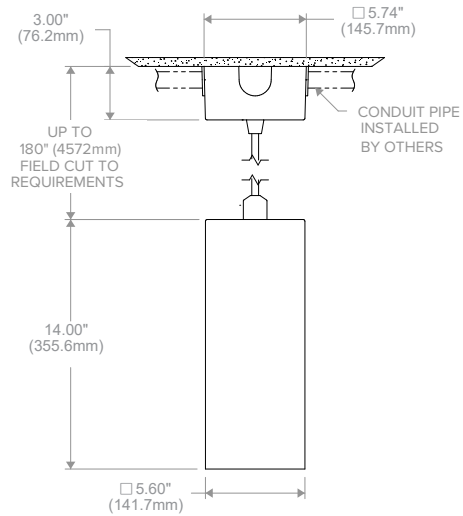
**Vented Detail view  
All 15L  
(All Mountings)**

## DIMENSIONS

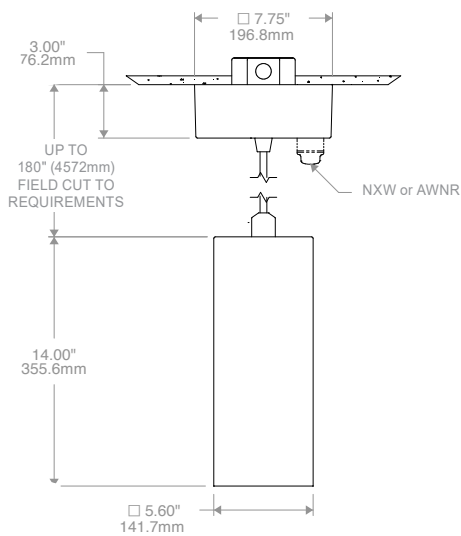
### LTC-4SQD (14" CYLINDER BODY) CORD (CM)



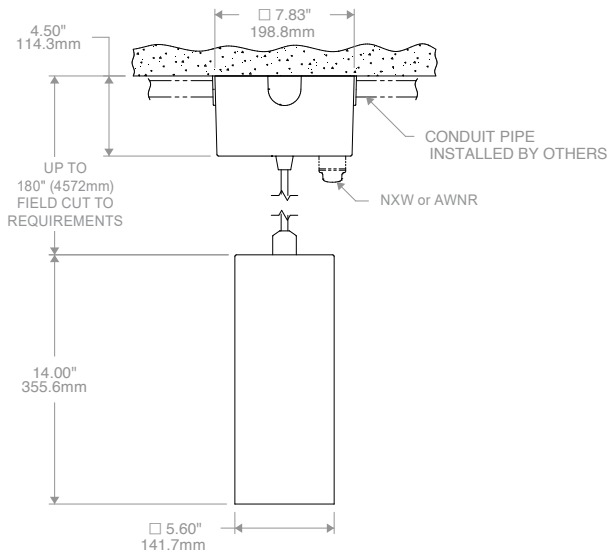
**Cord  
(Standard Canopy)  
CM**



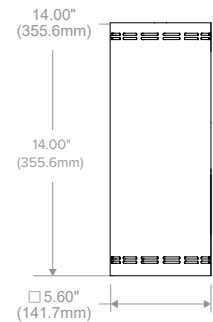
**Cord  
Conduit Canopy  
CMCC**



**Cord  
Power Canopy  
CMPC**



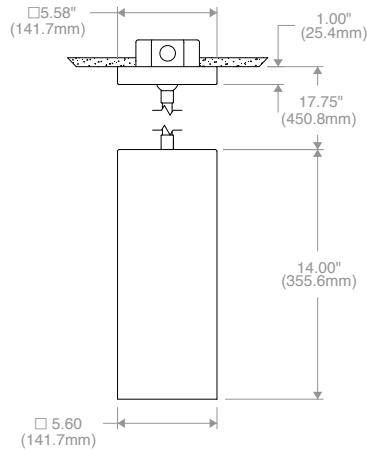
**Cord  
Power Conduit Canopy  
CMPCC**



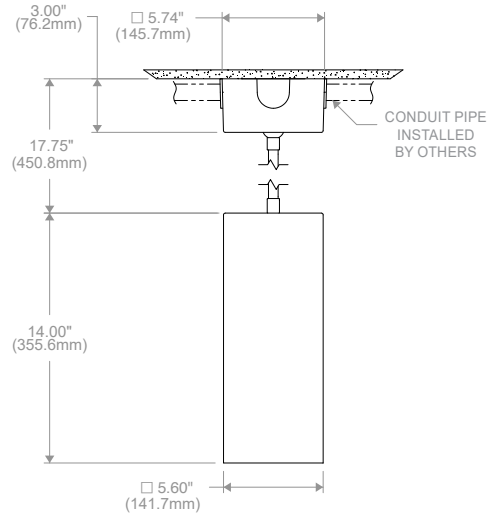
**Vented Detail view  
All 15L  
(All Mountings)**

## DIMENSIONS

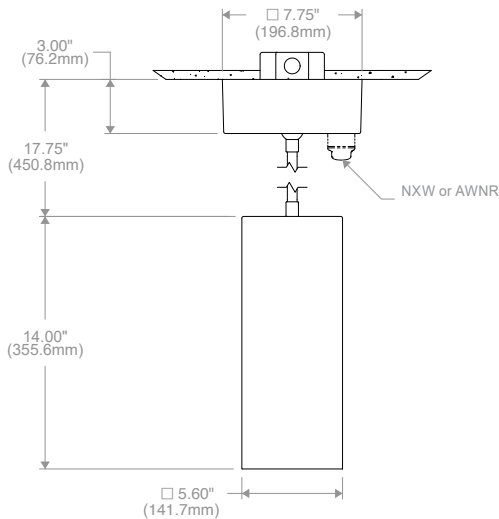
### LTC-4RD (14" CYLINDER BODY) PENDANT (P)



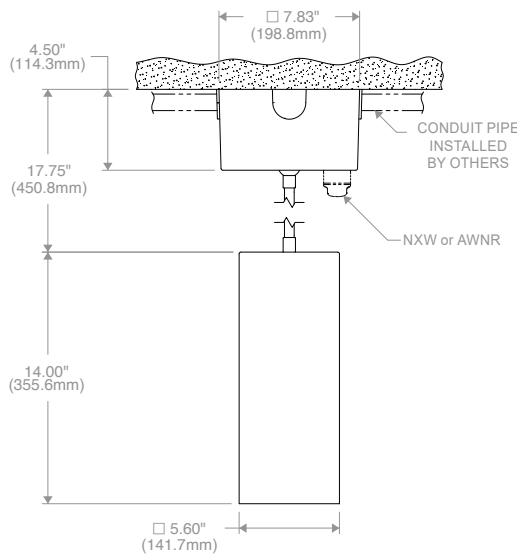
**Pendant  
(Standard Canopy)  
P**



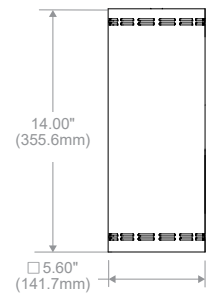
**Pendant  
Conduit Canopy  
PCC**



**Pendant  
Power Canopy  
PPC**



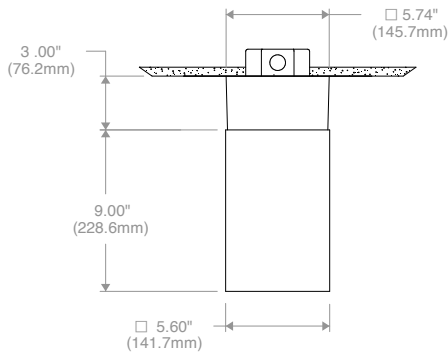
**Pendant  
Power Conduit Canopy  
PPCC**



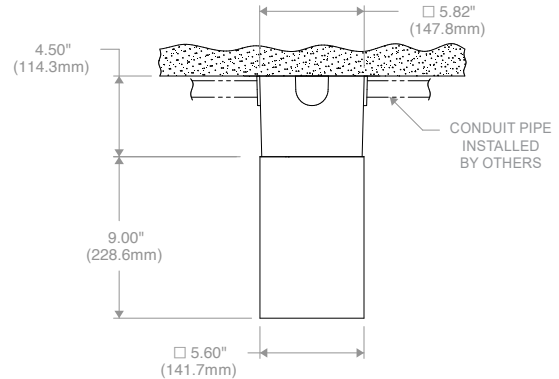
**Vented Detail view  
All 15L  
(All Mountings)**

## DIMENSIONS

### LTC-4SQDS (9" CYLINDER BODY) SURFACE (S)

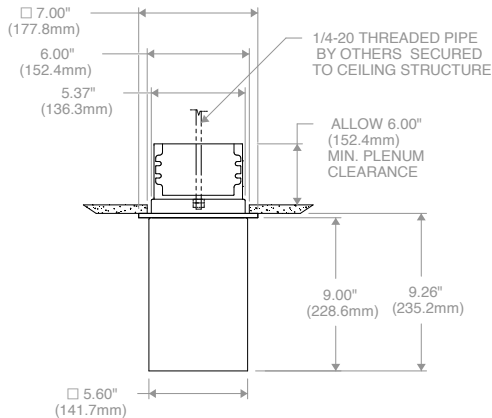


**Surface  
Power Canopy  
SPC**

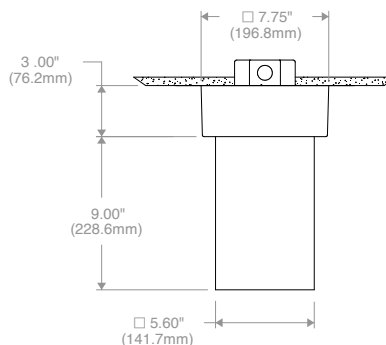


**Surface  
Power Conduit Canopy  
SPCC**

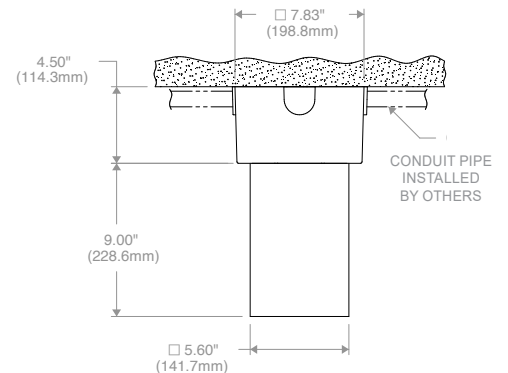
### (FOR CONTROLS OPTIONS ONLY)



**Surface  
Recessed Mount Driver  
SRMD**



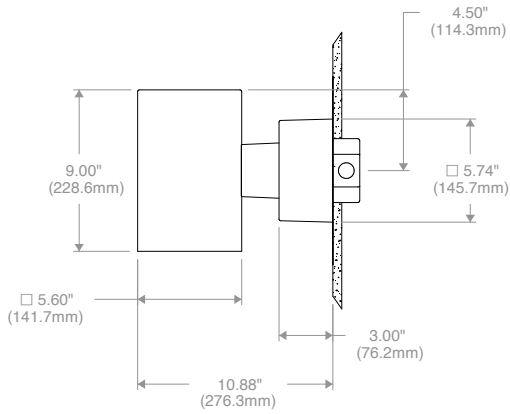
**Surface  
Power Canopy  
SPC**



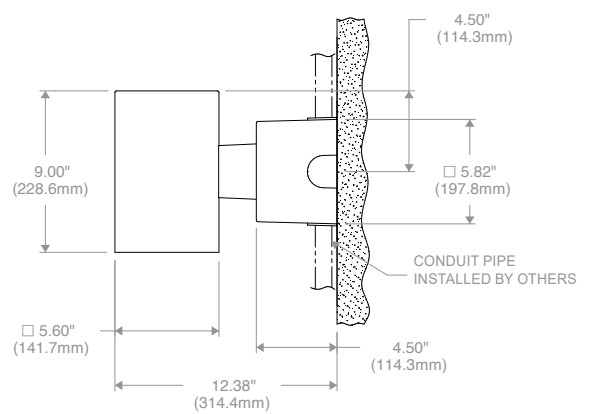
**Surface  
Power Conduit Canopy  
SPCC**

## DIMENSIONS

### LTC-4SQDS (9" CYLINDER BODY) WALL (W)

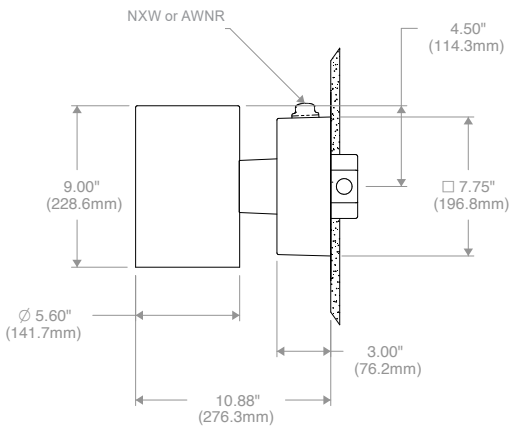


**Wall  
Power Canopy  
WPC**

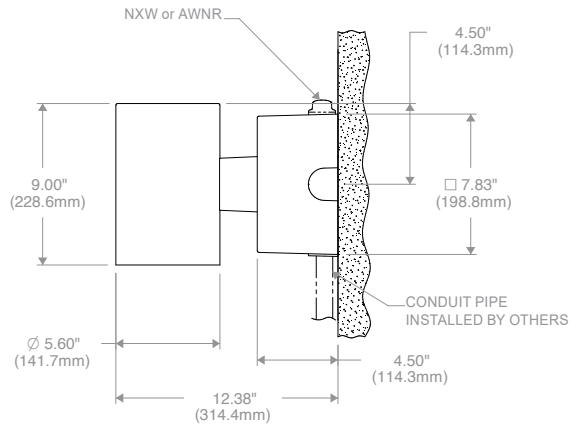


**Wall  
Power Conduit Canopy  
WPCC**

### (FOR CONTROLS OPTIONS ONLY)



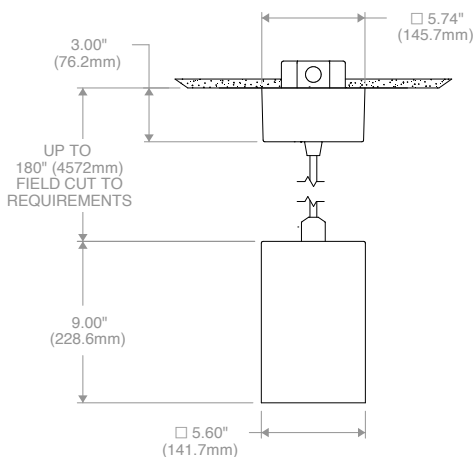
**Wall  
Power Canopy  
WPC**



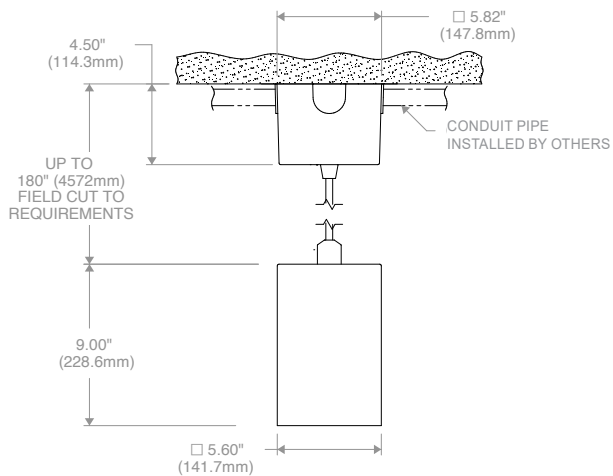
**Wall  
Power Conduit Canopy  
WPCC**

## DIMENSIONS

### LTC-4SQDS (9" CYLINDER BODY) CORD MOUNT (CM)

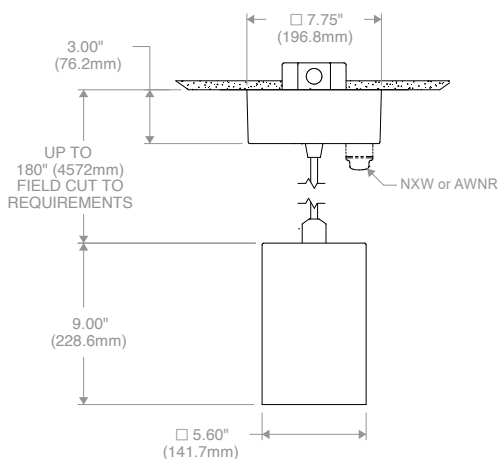


**Wall  
Power Canopy  
WPC**

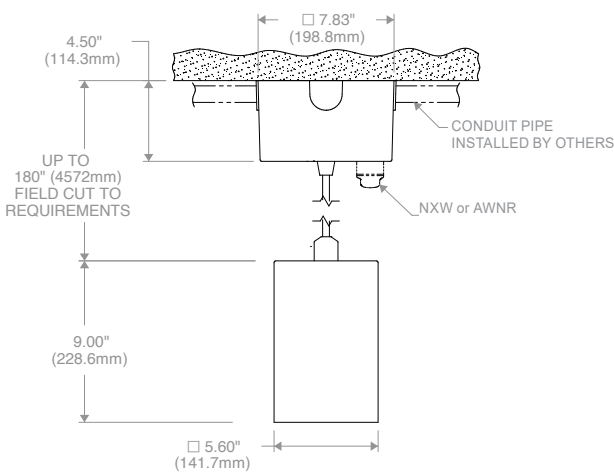


**Wall  
Power Conduit Canopy  
WPCC**

### (FOR CONTROLS OPTIONS ONLY)



**Wall  
Power Canopy  
WPC**

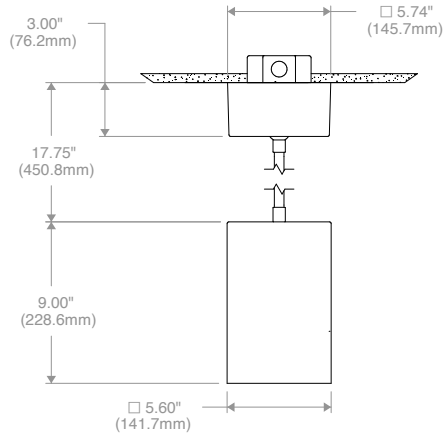


**Wall  
Power Conduit Canopy  
WPCC**

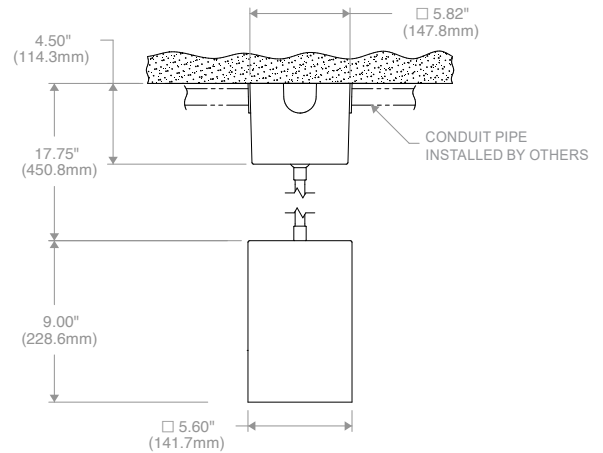


## DIMENSIONS

### LTC-4SQDS (9" CYLINDER BODY) PENDANT (P)

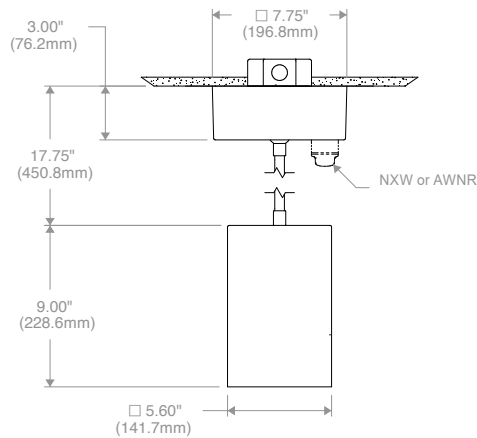


**Pendant  
Conduit Canopy  
PCC**

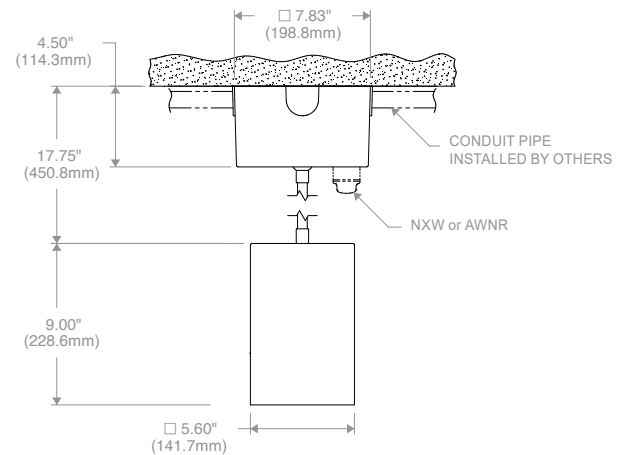


**Pendant  
Power Canopy  
PPC**

### (FOR CONTROLS OPTIONS ONLY)



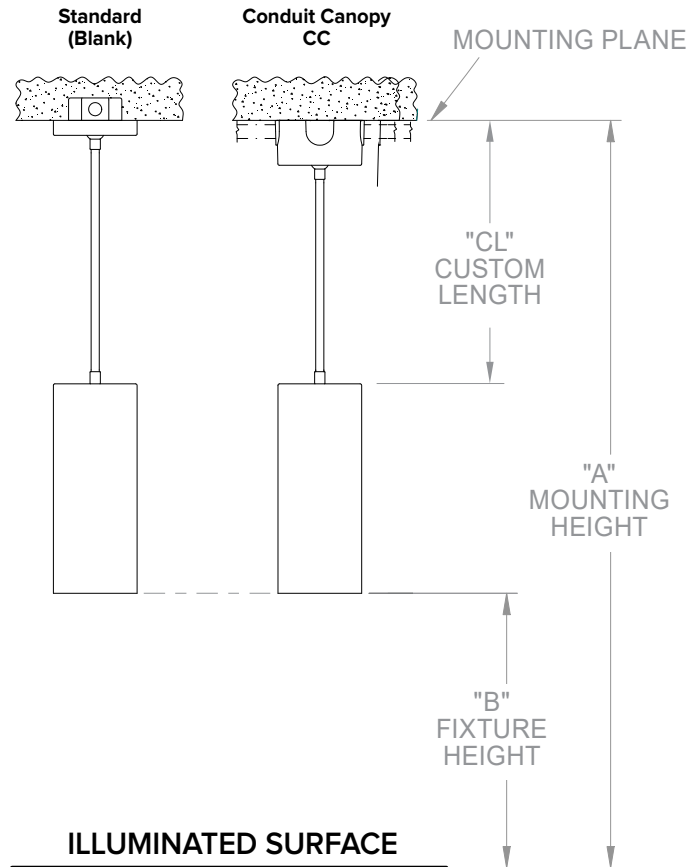
**Pendant  
Conduit Canopy  
PCC**



**Pendant  
Power Canopy  
PPC**

## DIMENSIONS

### PENDANT CUSTOM LENGTH



Custom Length (CL) = Mounting Height (A) - Fixture Height (B) - Cylinder Body Length

Ordering Examples:

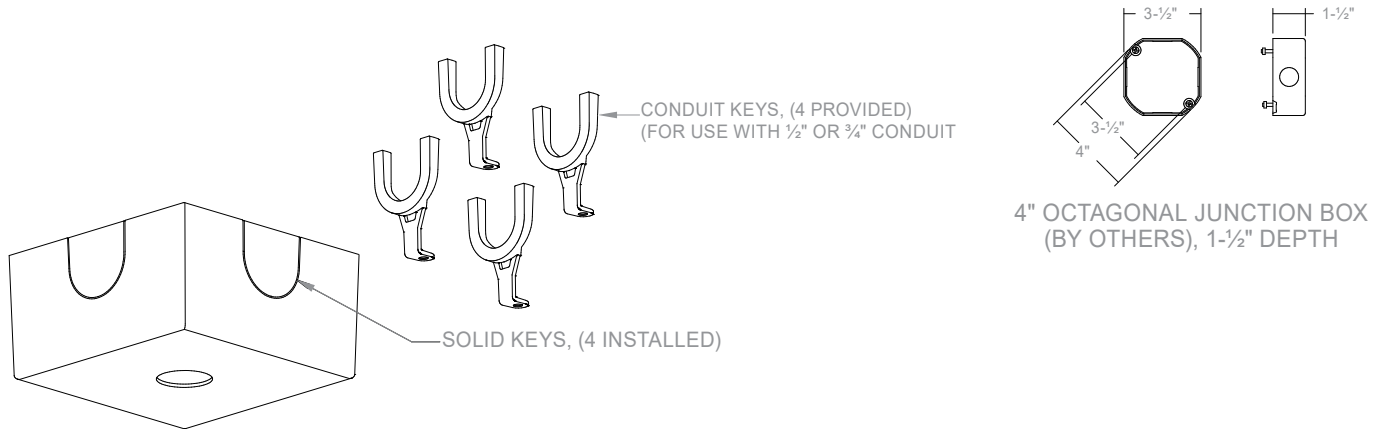
A (120") - B (72") - 14" = 34" Custom Length  
LTC-4SQD-P34

A (120") - B (72") - 9" = 39" Custom Length  
LTC-4SQD-P39

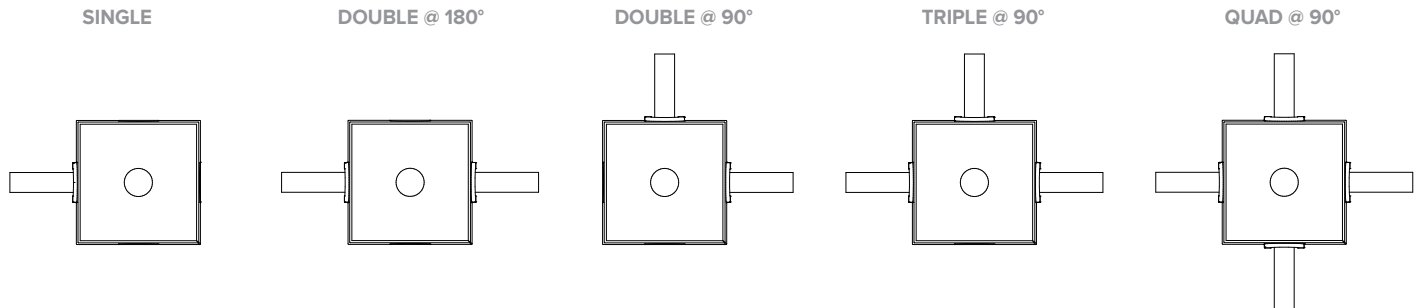
## DIMENSIONS

### CONDUIT CANOPY DETAILS

CC and PCC Conduit Canopy options come standard with (4) Solid Keys installed and (4) Conduit Keys provided.  
Accommodates a 4" octagonal junction box with 1-1/2" depth (by others).



### CONDUIT MOUNTING EXAMPLES - FIELD INTERCHANGEABLE



## PHOTOMETRY

### LTC-4SQD-P-15L2765T9NR-DMT-S-BL

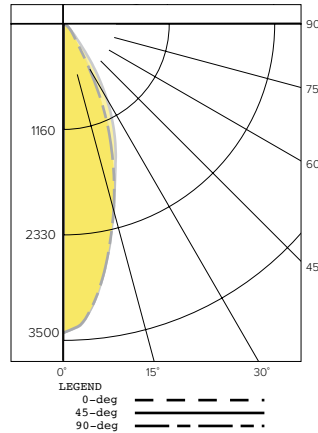
#### LUMINAIRE DATA

Test No.	R19.00949-C02
Description	1500 lm, Narrow, 3000K, 90 CRI
Delivered Lumens	1607
Watts	25.0W
Efficacy	64
Mounting	Pendant
Spacing Criterion	0.6
Beam Angle (FWHM)	37

#### ZONAL LUMEN SUMMARY

Zone	Lumens	% Luminaire
0-40	1511	94.0
0-60	1600	99.6
0-90	1607	100.0
0-180	1607	100.0

#### POLAR GRAPH



#### CANDELA DISTRIBUTION

Degree	Candela - 0	Candela - 45	Candela - 90
0	3252	3252	3252
5	3041	3042	3039
15	2012	2005	2003
25	949	1229	947
35	203	471	203
45	79	96	79
55	17	22	17
65	4	4	4
75	1	1	1
85	1	1	1
90	0	0	0

### LTC-4SQD-P-15L2765T9MD-DMT-S-BL

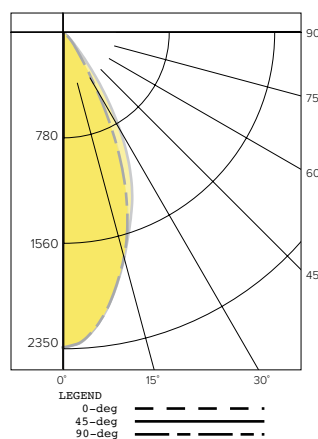
#### LUMINAIRE DATA

Test No.	R19.00950-C02
Description	1500 lm, Medium, 3000K, 90 CRI
Delivered Lumens	1516
Watts	25.0W
Efficacy	61
Mounting	Pendant
Spacing Criterion	0.8
Beam Angle (FWHM)	46

#### ZONAL LUMEN SUMMARY

Zone	Lumens	% Luminaire
0-40	1411	93.1
0-60	1509	99.6
0-90	1516	100.0
0-180	1516	100.0

#### POLAR GRAPH



#### CANDELA DISTRIBUTION

Degree	Candela - 0	Candela - 45	Candela - 90
0	2357	2357	2357
5	2268	2271	2270
15	1750	1760	1754
25	970	1209	977
35	250	507	255
45	84	106	85
55	18	23	18
65	4	4	3
75	1	2	1
85	1	1	1
90	0	0	0

### LTC-4SQD-P-15L2765T9WD-DMT-S-BL

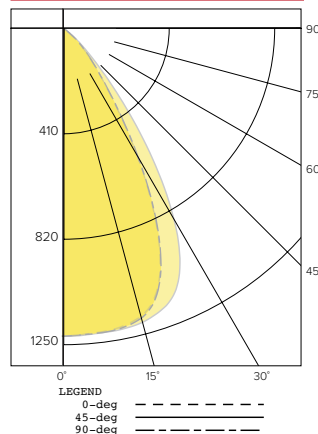
#### LUMINAIRE DATA

Test No.	R19.01045-C02
Description	1500 lm, Wide, 3000K, 90 CRI
Delivered Lumens	1335
Watts	25.0W
Efficacy	53
Mounting	Pendant
Spacing Criterion	1.0
Beam Angle (FWHM)	60

#### ZONAL LUMEN SUMMARY

Zone	Lumens	% Luminaire
0-40	1184	89.0
0-60	1327	99.4
0-90	1335	100.0
0-180	1335	100.0

#### POLAR GRAPH



#### CANDELA DISTRIBUTION

Degree	Candela - 0	Candela - 45	Candela - 90
0	1223	1223	1223
5	1217	1220	1219
15	1187	1211	1194
25	893	1092	900
35	352	602	358
45	122	165	123
55	24	33	25
65	4	5	4
75	2	2	2
85	1	1	1
90	0	0	0

## PHOTOMETRY (CONTINUED)

LTC-4SQD-P-15L2765T9XW-DMT-S-BL

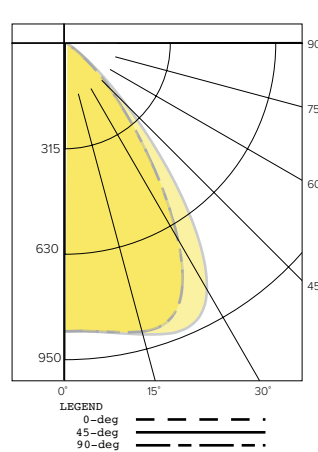
### LUMINAIRE DATA

Test No.	R19.00952-C02
Description	1500lm, Extra Wide, 3000K, 90 CRI
Delivered Lumens	1302
Watts	25.0W
Efficacy	52
Mounting	Pendant
Spacing Criterion	1.2
Beam Angle (FWHM)	69

### ZONAL LUMEN SUMMARY

Zone	Lumens	% Luminaire
0-40	1092	83.9
0-60	1293	99.3
0-90	1302	100.0
0-180	1302	100.0

### POLAR GRAPH



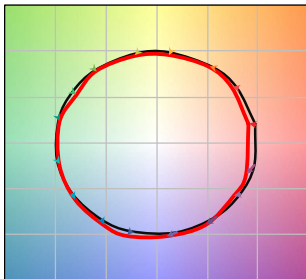
### CANDELA DISTRIBUTION

Degree	Candela - 0	Candela - 45	Candela - 90
0	879	879	879
5	882	884	882
15	911	920	911
25	838	937	836
35	476	684	474
45	174	242	174
55	31	47	31
65	5	6	5
75	2	3	2
85	1	1	1
90	0	0	0

## TM-30 DATA

### SPECTRASYNCTM TUNABLE WHITE (2765T)

#### COLOR VECTOR GRAPHIC 2700K, 90+ CRI

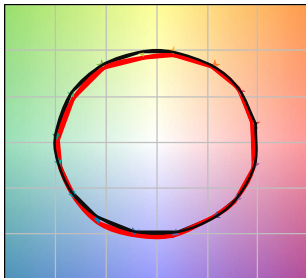


— Reference Illuminant — Test Source

#### COLOR DISTORTION GRAPHIC 2700K, 90+ CRI

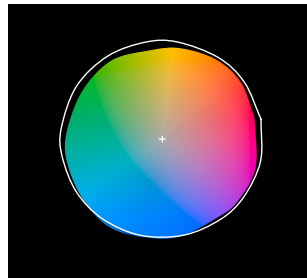


#### COLOR VECTOR GRAPHIC 4600K, 90+ CRI



— Reference Illuminant — Test Source

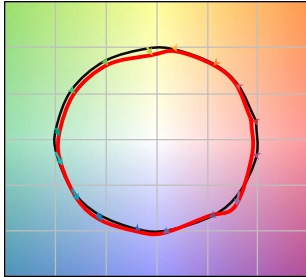
#### COLOR DISTORTION GRAPHIC 4600K, 90+ CRI



TEST RESULTS - TUNABLE WHITE @ 1500 LUMENS (NOMINAL)			
Value	2700K	4600K	6500K
Luminous Flux (lm)	1407	1604	1660
Wattage (W)	23.9	24.3	24.6
Efficacy (lm/W)	59	66	68
R <sub>f</sub>	90	89	87
R <sub>g</sub>	97	98	96
CCT (K)	2817	4588	6518
D <sub>uv</sub>	-0.0013	-0.0040	0.0018
x	0.4482	0.3565	0.3131
y	0.4047	0.3531	0.3273
CIE R <sub>a</sub>	91	95	94
CIE R <sub>g</sub>	47	81	76

**TM-30 DATA (CONTINUED)**

**COLOR VECTOR GRAPHIC**  
6500K, 90+ CRI



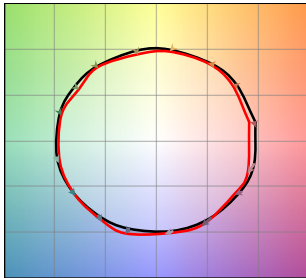
— Reference Illuminant — Test Source

**COLOR DISTORTION GRAPHIC**  
6500K, 90+ CRI



**SPECTRASYNCTM DIM TO WARM (2230TD)**

**COLOR VECTOR GRAPHIC**  
3000K, 90+ CRI @ 100%

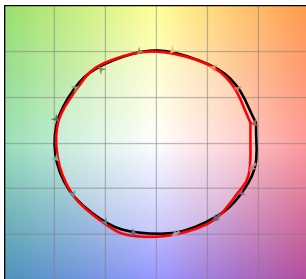


— Reference Illuminant — Test Source

**COLOR DISTORTION GRAPHIC**  
3000K, 90+ CRI @ 100%

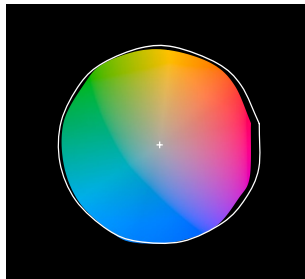


**COLOR VECTOR GRAPHIC**  
2600K, 90 CRI @ 50% DIM

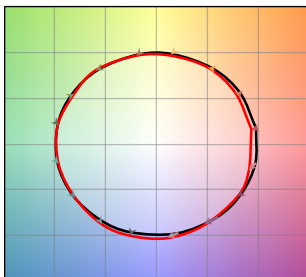


— Reference Illuminant — Test Source

**COLOR DISTORTION GRAPHIC**  
2600K, 90 CRI @ 50% DIM

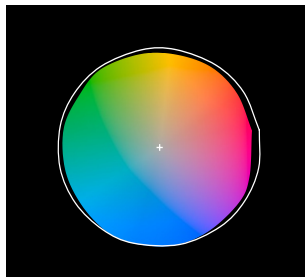


**COLOR VECTOR GRAPHIC**  
2200K, 90 CRI @ 5% DIM



— Reference Illuminant — Test Source

**COLOR DISTORTION GRAPHIC**  
2200K, 90 CRI @ 5% DIM



**TEST RESULTS - DIM TO WARM @ 3 DIMMING LEVELS**

Value	100%	50% Dim	5% Dim
Luminous Flux (lm)	945	507	34
Wattage (W)	16.94	9.69	2.43
Efficacy (lm/W)	56	52	14
R <sub>f</sub>	90	92	92
R <sub>g</sub>	97	99	98
CCT (K)	3136	2650	2204
D <sub>uv</sub>	-0.0016	-0.0016	-0.0005
x	0.4254	0.461	0.5063
y	0.3965	0.4069	0.4168
CIE R <sub>a</sub>	92	93	92
CIE R <sub>g</sub>	52	60	57

# LTC-4SQD SpectraSync

LITEISTRY 4" SQUARE CYLINDER WITH COLOR TUNING

DATE:	LOCATION:
TYPE:	PROJECT:
CATALOG #:	

## ELECTRICAL DATA

DRIVER DATA	
Input Voltage	120-277 V
Input Frequency	50/60 Hz
Power Factor	≥0.90
THD	<20%
EMI Filtering (FCC 47 CFR Part 15)	Class A
Operating Temperature	-20° C to 40° C

## ADDITIONAL INFORMATION

### Central Inverters

For full fixture output in back-up mode, we recommend you visit [currentlighting.com/dual-lite](http://currentlighting.com/dual-lite) for your Central Lighting Inverter options. Please contact your local Current representative for any assistance with proper sizing and loading of your inverter selection. Central lighting inverters must be ordered separately.