

# Lighting Controls

## LightGRID+ SERIES

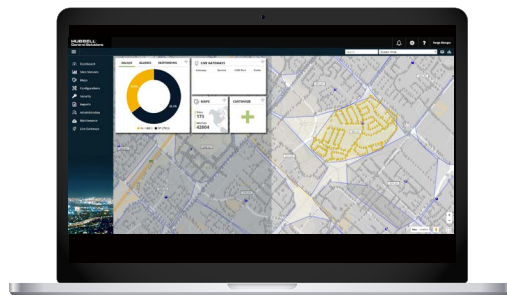
LightGRID+ ENTERPRISE SOFTWARE

DATE:	LOCATION:
TYPE:	PROJECT:
CATALOG #:	

LIGHTGRID+

### FEATURES

- Web-browser Graphical User Interface (GUI)
- Customizable dashboard with multi-site status
- Geographical mapping of devices on maps or layouts
- Intuitive management of devices, groups, scenarios and schedules
- Individual and multi-site energy reports with graphs
- Customizable security roles, users and rules
- Secure multi-concurrent user logins
- Customizable site/device alarms with SMS & email notifications



### SPECIFICATIONS<sup>1</sup>

#### HARDWARE OR VIRTUAL SERVER REQUIREMENTS

- 1000 or less nodes:
  - Core CPU: 2
  - Memory (RAM): 8 GB
  - Storage: 250 GB
- 25,000 nodes:
  - Core CPU: 4
  - Memory (RAM): 16 GB
  - Storage: 500 GB
- 50,000 nodes:
  - Core CPU: 8
  - Memory (RAM): 16 GB
  - Storage: 1 TB
- 100,000 and more nodes:
  - Core CPU: 16
  - Memory (RAM): 32 GB
  - Storage: 2 TB

#### SERVER SOFTWARE REQUIREMENTS ON LOCAL SERVER

- Windows Server 2019 (Recommended), including the latest security updates
  - .NET Framework 4.8
  - Microsoft IIS Web Server
  - Microsoft MSMQ
  - RabbitMQ
- Databases installed during LightGRID+ Server Installation:
- MySQL V5.7
  - PostgreSQL V14 / TimeScale V2.8.1

#### NETWORK REQUIREMENTS

- Port UDP 8010 (in)
- Port TCP 8001 (in/out)
- Port TCP 3306 (out)
- Port TCP 3636 (in/out)
- Port TCP 3637 (in/out)
- Port TCP 2001 (out)

#### TECHNICAL NOTES

- Server requires a fast Internet connection
- Maps used in plan view use Google Maps by default (Azure Maps optional). Other mapping applications are not supported.
- Compatible browsers include: Google Chrome (recommended), Microsoft Edge, Firefox, Google Chrome for Android (high definition screen). Supported browsers should be updated to the latest stable revision.

#### WARRANTY

- 5 year limited

Notes:

- 1 On-Premise Enterprise Server is a software only solution. Hardware/Virtual Server not provided.



# Lighting Controls

## LightGRID+ SERIES

LightGRID+ ENTERPRISE SOFTWARE

### ORDERING GUIDE

Example: WIR-SS-ESRV

CATALOG #

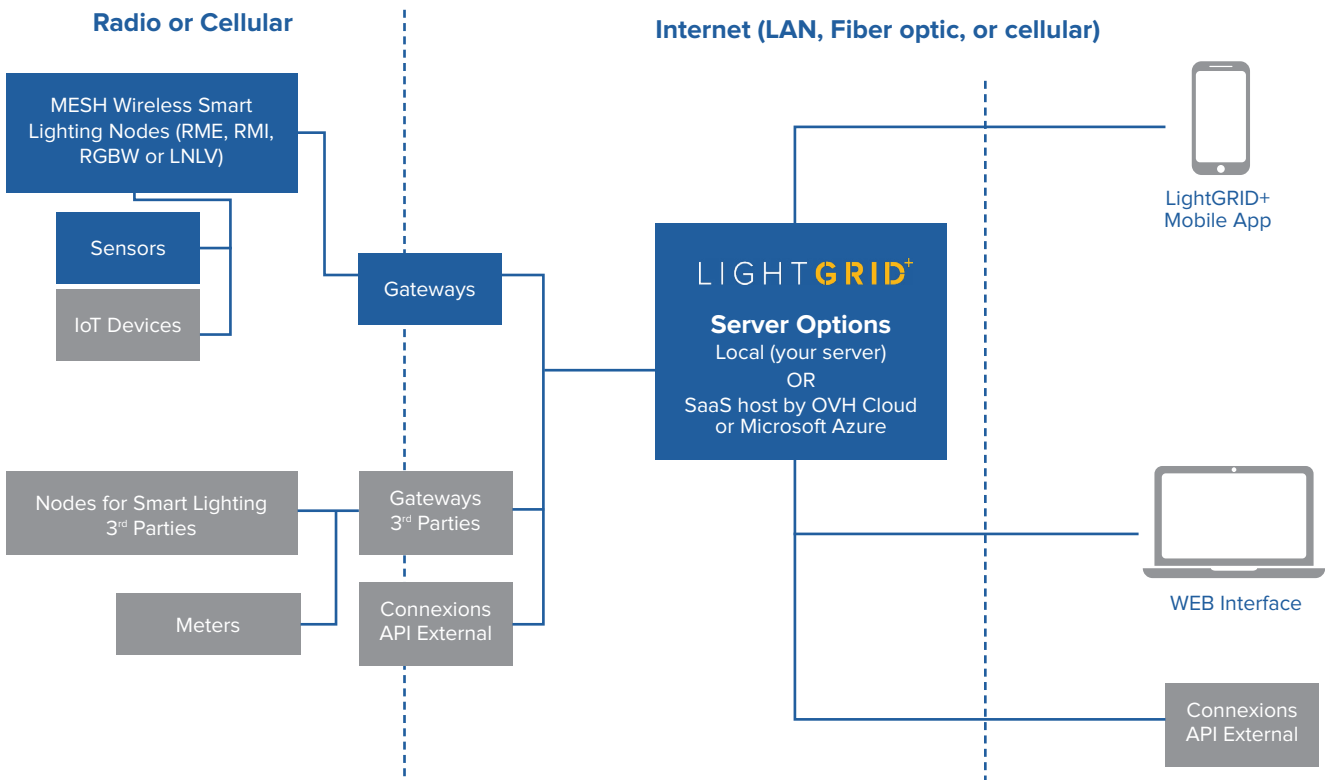
Enterprise On-Premise Server Software	
WIR-SS-ESRV	LightGRID+ On-Premise Enterprise Server (1 to 2499 nodes) - Installed on premise or cloud on system supplied by others (Windows® Server License Not Included)
WIR-SS-ESRV-2500	LightGRID+ On-Premise Enterprise Server (2500+ nodes) - Installed on premise or cloud on system supplied by others (Windows® Server License Not Included)
WIR-SS-ESRV-SETUP <sup>1</sup>	LightGRID+ On-Premise Enterprise Server Installation via Remote Access
WIR-SS-ESRV-NLKEY <sup>1,2</sup>	LightGRID+ On-Premise Enterprise Server Node License Key

Enterprise Hosted/SaaS Server Software <sup>3</sup>	
WIR-HST-ESRV-SETUP	LightGRID+ Hosted Enterprise Server Setup - (Nodes not included)
WIR-HST-ESRV-NLKEY <sup>2</sup>	LightGRID+ Hosted Enterprise Server Node License Key
WIR-HST-ESRV-MAINT	LightGRID+ Hosted Enterprise Server Annual Maintenance Fee
WIR-HST-NODE-MAINT	LightGRID+ Hosted Node Annual Maintenance Fee (Per Node)

- Notes:
- 1 Required with the purchase of either WIR-SS-ESRV or WIR-SS-ESRV-2500
  - 2 License key required for each LightGRID+ module
  - 3 Software as a Service (SaaS)

### ADDITIONAL INFORMATION

#### System Architecture





# Lighting Controls

## LightGRID+ SERIES

LightGRID+ ENTERPRISE SOFTWARE

### System Deployment

