



## E2SC Security Light

### LED Roadway Lighting

The **Evolve**® LED Security Light provides energy efficiency in a rugged, easy to install, light weight fixture. Current's advanced optical design offers Type III and Type V photometry with the versatility of a field installable refractor option to meet your lighting requirements.

### Construction

<b>Housing:</b>	Aluminum die cast enclosure
<b>Lens:</b>	Impact resistant tempered glass (non refractor version)
<b>Weight:</b>	8.5 lbs (3.8 kgs) without mounting bracket

### Optical System

<b>Lumens:</b>	3,730 - 6,270 lm
<b>Distribution:</b>	Type III/IV and Type V
<b>Efficacy:</b>	100-128 LPW
<b>CCT:</b>	2700K, 3000K, 4000K, 5000K
<b>CRI:</b>	≥70

### Electrical

<b>Input Voltage:</b>	120-277V (no 347-480V)
<b>Input Frequency:</b>	50/60Hz
<b>Power Factor:</b>	≥ 90 at rated watts
<b>Total Harmonic Distortion:</b>	≤ 20% at rated watts

### Surge Protection\*

STANDARD	OPTIONAL
6kV/3kA	Enhanced 10kV/5kA (R Option)

\*Per ANSI C136.2-2018

### WARRANTY

5 Year (Standard)

### Lumen Maintenance

Projected Lxx per IES TM-21 at 25°C

LXX(10K) @ HOURS				
LUMEN CODES	LUMEN CODES	25,000 HR	50,000 HR	60,000 HR
04	C4	L95	L93	L92
05	C4	L93	L88	L86
06	C4	L83	L70	L65
04	V4	L95	L92	L90
05	V4	L94	L90	L89
06	V4	L91	L85	L83

Note: Projected Lxx based on LM80 (≥ 10,000 hour testing). Accepted industry tolerances apply to initial luminous flux and lumen maintenance measurements.

### Ambient Temperature Factor

AMBIENT TEMP (°C)	INITIAL FLUX FACTOR	AMBIENT TEMP (°C)	INITIAL FLUX FACTOR
10	1.02	30	0.99
20	1.01	40	0.98
25	1.00		

### Ratings

<b>Operating Temperature:</b>	-40°C to 40°C
<b>Vibration:</b>	3G per ANSI C136.31-2010
<b>LM-79:</b>	Testing in accordance with IES Standards

### Controls

<b>Dimming:</b>	Standard - 0-10V Optional = DALI (Option U)
<b>Sensors:</b>	Photo Electric Sensors (PE) available LightGrid and Daintree Compatible



LISTED

Not all product variations listed on this page are DLC qualified. Visit [www.designlights.org/search](http://www.designlights.org/search) to confirm qualifications.

### Ordering Information

**E 2 S C 0**

PROD. ID	VOLTAGE	LUMENS	DISTRIBUTION	REFRACTOR	CCT	CONTROLS PER ANSI C136.41	MOUNTING	POWER LEADS	OPTIONS	
E = Evolve  2SC = Security Light	0 = 120-277V	04 = 4000 lm	C4 = Type III/IV <sup>1</sup>	N = None (zero upright)	27 = 2700K	A = 7-Pin Receptacle	N = None	N = None	C1 = Captive Door	
		05 = 5000 lm	V4 = Type V	R = Factory Installed Refractor	30 = 3000K	D = 7-Pin Receptacle with Shorting Cap	L = Long 24 in. bracket <sup>2</sup>	3 = 3 ft # 14 Leads	L = Tool-Less Entry	
		06 = 6000 lm				40 = 4000K	E = 7-Pin Receptacle with Long Life Non-Dimming PE in Box		5 = 5 ft # 14 Leads	R = Secondary Surge Protection (10Kv/5Ka)
						50 = 5000K			8 = 8 ft # 14 Leads	U = DALI Programmable <sup>3</sup> XXX = Special Options

<sup>1</sup> See ISO Plot page for the typical C4 distribution - this optic is designed to address a Roadway Photometric Application and is a Type III without the refractor, and Type IV with a refractor.

<sup>2</sup> For Mounting on Wood Pole

<sup>3</sup> Compatible with LightGrid

LUMEN OUTPUT	DISTRIBUTION	REFRACTOR	LUMENS			WATTAGE	BUG RATINGS		
			5000K/4000K	3000K	2700K	120-277V	5000K/4000K	3000K	2700K
04	C4	N	4000	3920	3810	32	B1-U0-G2	B1-U0-G2	B1-U0-G2
	V4	N	4030	3940	3840		B2-U0-G0	B2-U0-G0	B2-U0-G0
	C4	R	3920	3840	3730		B1-U3-G2	B1-U2-G2	B1-U2-G2
	V4	R	4090	4000	3900		B2-U2-G1	B2-U2-G1	B2-U2-G1
05	C4	N	5000	4900	4760	43	B1-U0-G2	B1-U0-G2	B1-U0-G2
	V4	N	5200	5090	4950		B2-U0-G1	B2-U0-G1	B2-U0-G1
	C4	R	4900	4800	4660		B1-U3-G3	B1-U3-G3	B1-U3-G2
	V4	R	5280	5170	5020		B2-U2-G1	B2-U2-G1	B2-U2-G1
06	C4	N	5885	5770	5610	55	B1-U0-G2	B1-U0-G2	B1-U0-G2
	V4	N	6180	6060	5890		B2-U0-G1	B2-U0-G1	B2-U0-G1
	C4	R	5760	5650	5490		B1-U3-G3	B1-U3-G3	B1-U3-G3
	V4	R	6270	6150	5980		B2-U3-G1	B2-U3-G1	B2-U3-G1

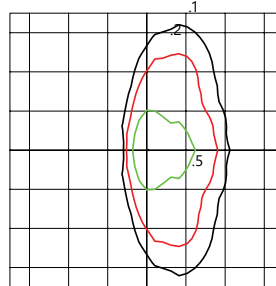
For additional information on E2SC IES files, please refer to LED.com



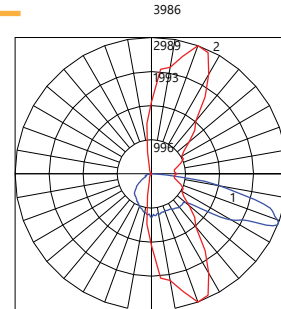
### Photometric Plots

**E2SC**  
Type III - No Refractor  
(05C4N40)

5,000 Lumens  
4000K  
E2SC\_05C4N40\_\_\_IES



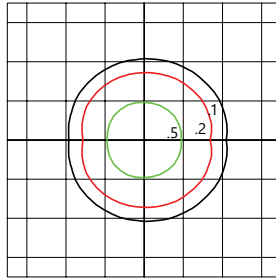
- Mounting Height at 30'
- Initial Footcandle Values at Grade



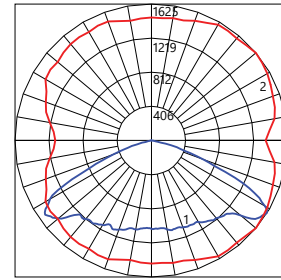
- Vertical plane through horizontal angle of Max. Cd at 70°
- Horizontal cone through vertical angle of Max. Cd at 68°

**E2SC**  
Type V - No Refractor  
(05V4N40)

5,200 Lumens  
4000K  
E2SC\_05V4N40\_\_\_IES



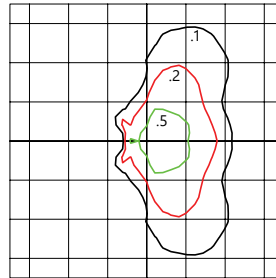
- Mounting Height at 30'
- Initial Footcandle Values at Grade



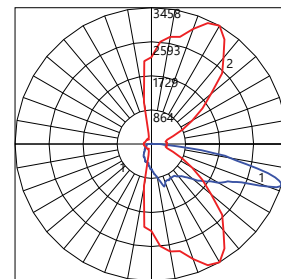
- Vertical plane through horizontal angle of Max. Cd at 58°
- Horizontal cone through vertical angle of Max. Cd at 40°

**E2SC**  
Type IV - W/Refractor  
(05C4R40)

4,900 Lumens  
4000K  
E2SC\_05C4R40\_\_\_IES



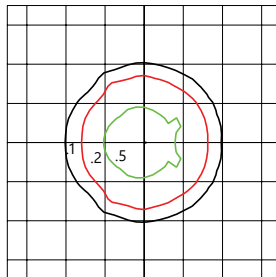
- Mounting Height at 30'
- Initial Footcandle Values at Grade



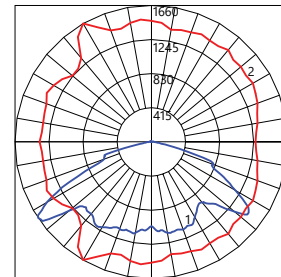
- Vertical plane through horizontal angle of Max. Cd at 73°
- Horizontal cone through vertical angle of Max. Cd at 60°

**E2SC**  
Type V - W/Refractor  
(05V4R40)

5,280 Lumens  
4000K  
E2SC\_05V4R40\_\_\_IES



- Mounting Height at 30'
- Initial Footcandle Values at Grade



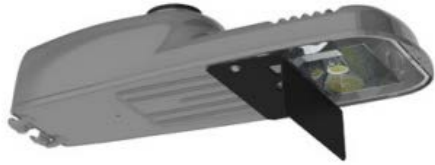
- Vertical plane through horizontal angle of Max. Cd at 56°
- Horizontal cone through vertical angle of Max. Cd at 120°

CUSTOMER NAME \_\_\_\_\_

PROJECT NAME \_\_\_\_\_

DATE \_\_\_\_\_ TYPE \_\_\_\_\_

CATALOG NUMBER \_\_\_\_\_



### House Side Shield - E2SC/ERLC

DESCRIPTION
ELSHS-ERLC-BLCK
ELSHS-ERLC-GRAY

\*E2SC shields are designed for Flat Glass Versions only.

### Street Side Shield - E2SC/ERLC

DESCRIPTION
ELSFS-ERLC-BLCK-10
ELSFS-ERLC-BLCK-15
ELSFS-ERLC-BLCK-20

\*E2SC shields are designed for Flat Glass Versions only.

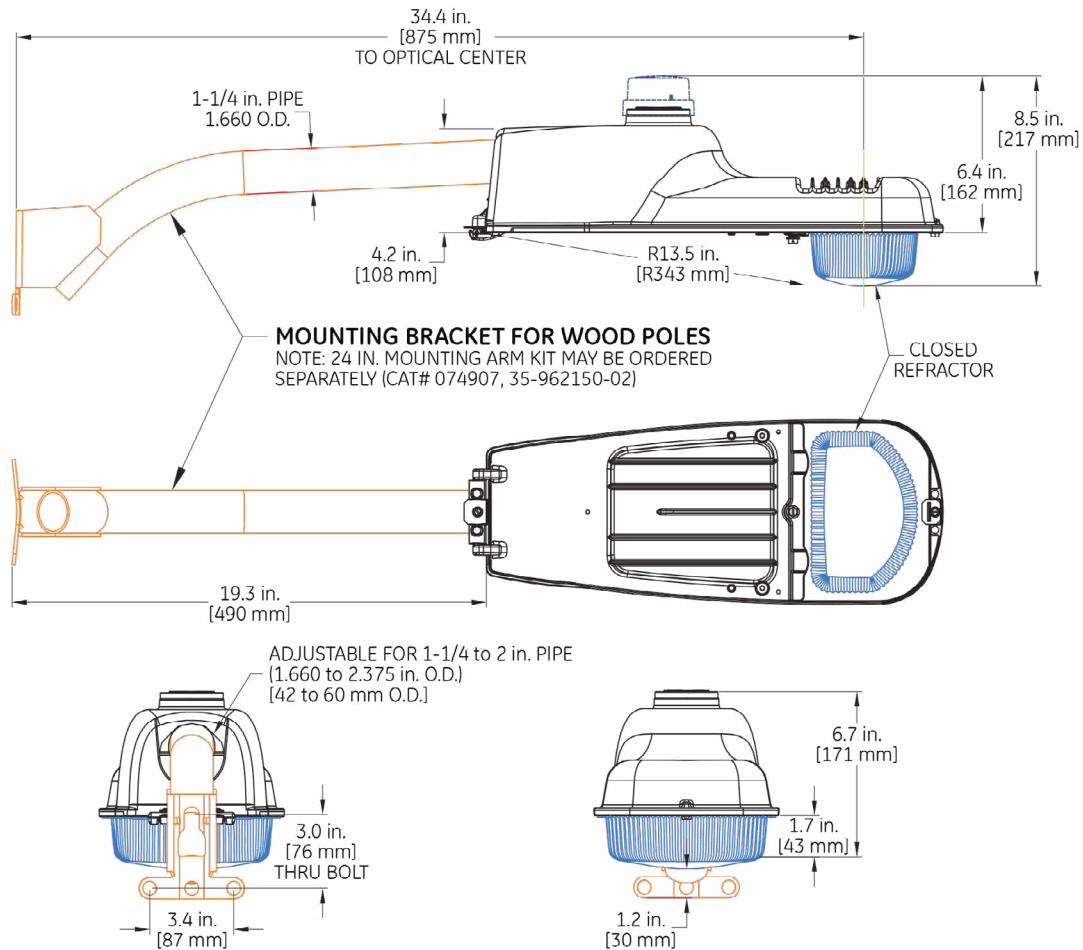


### Side Shield (L & R) - E2SC/ERLC

DESCRIPTION
ELS-ERLC-LEFTRIGHTSIDEKIT-BLCK-10
ELSHS-ERLC-GRAY

Shipped as a kit - L & R can be used independently

\*E2SC shields are designed for Flat Glass Versions only.



### Mounting

- Suggested Mounting Height: 12-28 ft. (4-8 M)
- Adjustable for 1.25 to 2 in. nominal mounting pipe
- Integral diecast mounting pipe stop
- Slipfitter with +/- 5 degrees of leveling adjustment

### Effective Projected Area

- 0.38 sq ft.

### Weight

- Approximate net weight: 8.5 lbs (3.8 kgs) without mounting bracket.
- With 24 in. (610 mm) Mounting Bracket: 16 lbs (7.3 kgs)

### Accessories

SAP NUMBER	PART NUMBER	DESCRIPTION
74907	35-962150-02	24 in. Mounting Arm Kit for Wood Poles
93122446	ESR-E2SC-A	Field Installable Refractor Kit

### Networked Lighting Control



Current's LightGrid™ Outdoor Lighting Control System is designed for Street and Roadway Applications. It enables remote monitoring, control, and asset management of a single fixture or a group of fixtures through a web enabled Central Management System.