

## EACL Series Luminaires

### Shielding Specification & Ordering Guide

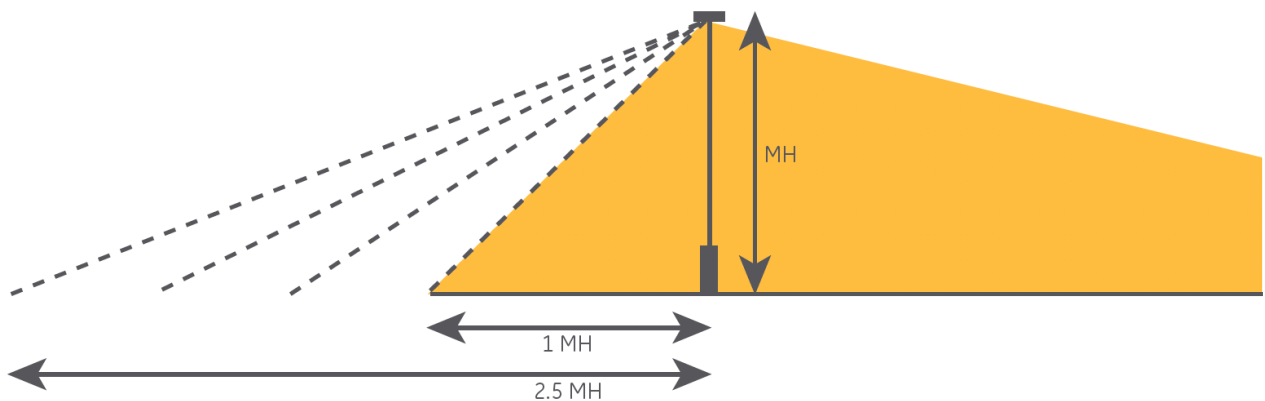


The next evolution of the **Evolve**® LED Area Light delivers even better trespass control. Current's exclusive reflective optical ring design produces superior vertical illuminance and efficiently directs the light without wasteful and unwelcomed light spill into neighboring properties. Due to the extensive variation of parking lot configurations coupled with tightening ordinances,

*Current now offers a full array of shielding to accommodate challenging sites.*

The shielding options available for the Evolve® Area Light focus on the following applications:

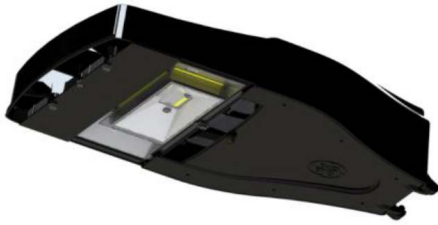
- Left & Right Cutoff
- Front Cutoff
- Backlight Control & B-U-G Improvement



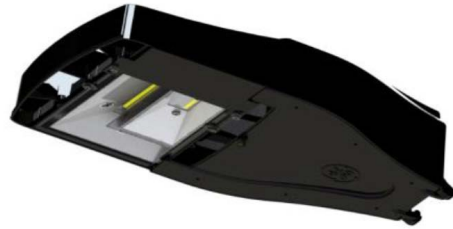
Within each of the shielding families, there are multiple shielding cutoff levels that are categorized in mounting height (MH) increments. Current accommodates cutoff distance from the pole from 1MH to 2.5 MH in 0.5 MH increments. The shields that are listed are for the most common applications. Please contact the manufacturer if your need is not listed.

All shields can be installed easily in the field. The next evolution of the Evolve® LED Area Light and shielding options will help you meet any parking lot challenge.

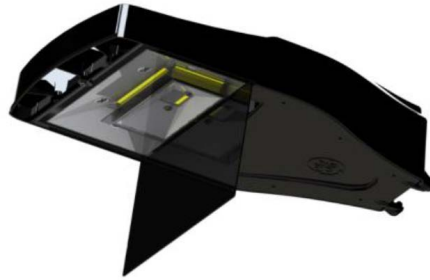
## EACL SERIES SHIELDED FIXTURE EXAMPLES\*



Front Shield



Left/Right Side Shield



Back Shield

### TYPE IV SHIELDING

Shield Orientation	Cutoff Distance	Shield Order Logic
Front	1.5	ELS-EACL-RF3-BLCK
	2	ELS-EACL-RF4-BLCK
Side	1	ELS-EACL-RS2-BLCK
Back	Long	ELS-EACL-RBL-BLCK

### TYPE III SHIELDING

Shield Orientation	Cutoff Distance	Shield Order Logic
Front	1.5	ELS-EACL-RF3-BLCK
Side	1	ELS-EACL-RS2-BLCK
Back	Long	ELS-EACL-RBL-BLCK

### TYPE II SHIELDING

Shield Orientation	Cutoff Distance	Shield Order Logic
Side	1	ELS-EACL-RS2-BLCK
Back	Long	ELS-EACL-RBL-BLCK

\*All shields listed on this page are "BLACK" in color.