

## ESPL Series Sports Lighter LED Floodlight



Project Name \_\_\_\_\_

Date \_\_\_\_\_ Type \_\_\_\_\_

Notes \_\_\_\_\_

- The Evolve ESPL LED sports lighter is designed to replace legacy 1500W HID systems one-for-one, with better uniformity and superior lumen maintenance, providing over 50% energy savings with improved light levels
- Ideal for municipal sports fields, large area lighting, and other applications requiring high light levels
- Superior efficacy ranging from 135 to 153 LPW
- Available in three beam spreads - NEMA 3x3, 4x4, 5x5

### CONSTRUCTION

<b>Housing:</b>	Die Cast Aluminum Housing
<b>Lens:</b>	UV Stabilized polycarbonate outer lens protects LED's
<b>Paint:</b>	Light Gray
<b>Weight:</b>	54.4lbs. (24.7kg)

### OPTICAL SYSTEM

<b>Lumens:</b>	99,500 - 113,000
<b>Distribution:</b>	NEMA 3x3, 4x4, 5x5
<b>Efficacy:</b>	135-153 LPW
<b>CCT:</b>	4000K
<b>CRI (Min):</b>	70

### ELECTRICAL

<b>Input Voltage:</b>	120-277V, 277-480V
<b>Input Frequency:</b>	50/60Hz
<b>Power Factor:</b>	90%
<b>Total Harmonic Distortion:</b>	>20%

### SURGE PROTECTION\*

<b>Standard</b>
6kA

\*Per ANSI C136.2-2015

### WARRANTY

5 Year (Standard)

### LUMEN MAINTENANCE

Projected Lxx per IES TM-21 at 25°C

SKU	LXX(10K) @ Hours		
	25,000 HR	50,000 HR	100,000 HR
<b>ESPL</b>	L96	L91	L81

Note: Projected LXX based on LM80 (> 10,000 hour testing). Accepted industry tolerances apply to initial luminous flux and lumen maintenance measurements.

### AMBIENT TEMPERATURE FACTOR

<b>Ambient Temp (°C)</b>
-40°C to 40°C

### RATINGS

<b>Operating Temperature:</b>	-40°C to 40°C
<b>Vibration:</b>	3G Vibration Rating

### CONTROLS

<b>Dimming:</b>	0-10V Dimming Driver
-----------------	----------------------

Project Name \_\_\_\_\_

Date \_\_\_\_\_ Type \_\_\_\_\_

Notes \_\_\_\_\_

E S P L 01 10 7 40 S N T1 GRAY

PROD. ID	GEN	VOLTAGE	LUMEN OUTPUT	DIST.	CRI	CCT	DIMMING	CONTROLS	MOUNTING	COLOR
<b>E = Evolve</b>	01 = 1st Gen	0 = 120-277V	10 = 100,000	33 = NEMA 3x3	7 = 70	40 = 4000K	S = 0-10V dimming (leads in driver housing)	N = No Control	T1 = Trunnion	GRAY = Light Gray
<b>SP = Sports</b>		E = 277-480V		44 = NEMA 4x4						
<b>L = Light</b>				55 = NEMA 5x5						

## ACCESSORIES

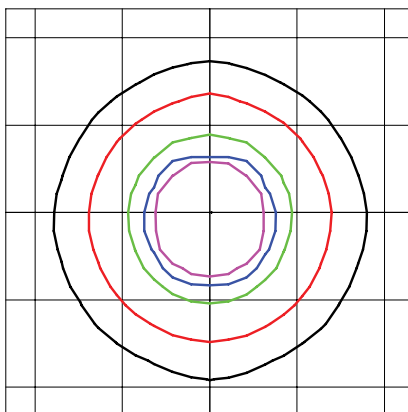
Evolve Sports Light Accessories	
VISOR-TSL SINGLE PACK	Single Turf Visor field installation
VISOR-TSL 10 PACK	Turf Visor 10 pack for field installation
LASER-TSL	Turf laser Aiming Device. Only one need per job
4024SLS	Slipfitter for 2" (2 3/8" OD) tenon for integral luminaires
TCA-R2	Round Steel Pole Crossarm for 2 fixtures
TCA-R3	Round Steel Pole Crossarm for 3 fixtures
TCA-R4	Round Steel Pole Crossarm for 4 fixtures
TCA-W2	Round Wood Pole Crossarm for 2 fixtures
TCA-W3	Round Wood Pole Crossarm for 3 fixtures
TCA-W4	Round Wood Pole Crossarm for 4 fixtures

Electrical Data		
Nominal Wattage	Input Voltage (V)	Operating Current (Amps)
<b>720W</b>	120	6.0
	240	3.0
	277	2.6
	347	2.2
	480	1.6

Beam	Output (Lumens)
NEMA 3x3	99,500
NEMA 4x4	108,000
NEMA 5x5	113,000

**ESPL 01 0 33 70 40**

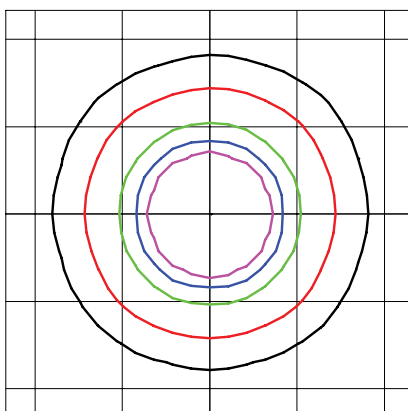
**NEMA 3x3**



Beam Pattern: NEMA 3x3, Beam Angle: 19° x 19°  
Mounting Height: 60ft

**ESPL 01 0 44 70 40**

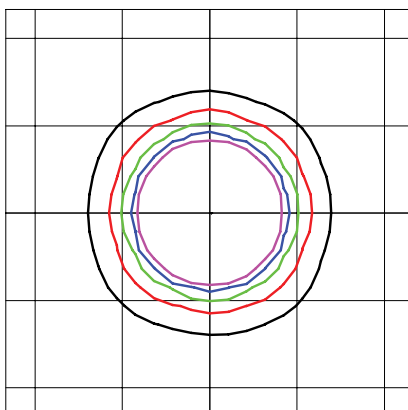
**NEMA 4x4**



Beam Pattern: NEMA 4x4, Beam Angle: 30° x 30°  
Mounting Height: 60ft

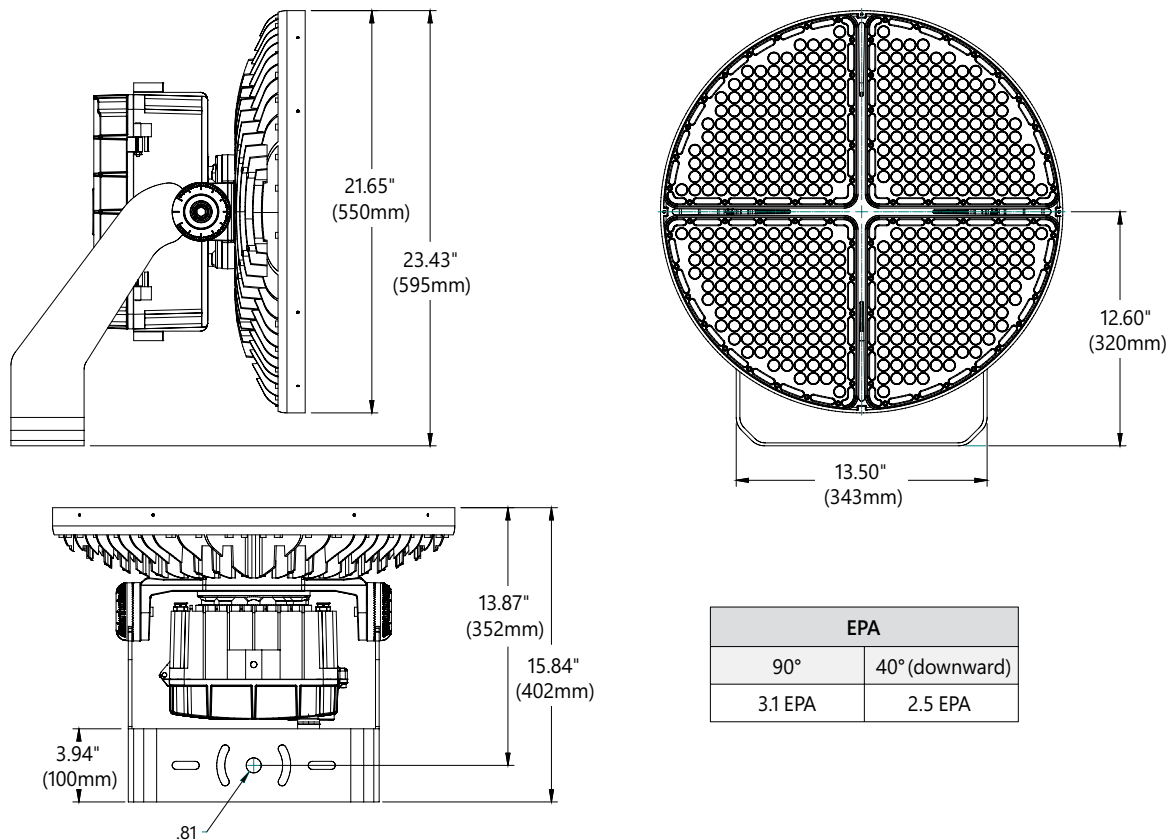
**ESPL 01 0 55 70 40**

**NEMA 5x5**

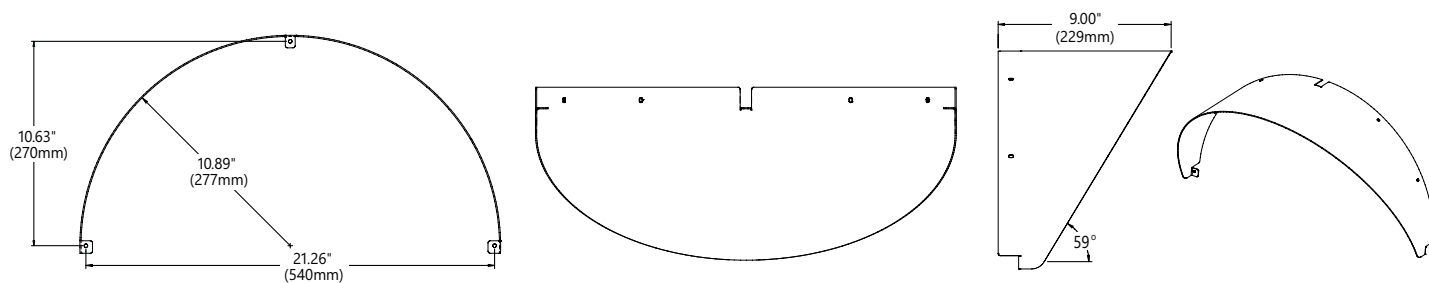


Beam Pattern: NEMA 5x5, Beam Angle: 56° x 56°  
Mounting Height: 60ft

## DIMENSIONS



## VISOR



## LASER AIMING

